

DISTRICT I  
1625 N. FRENCH DR., HOBBS, NM 88240  
Phone: (575) 393-6161 Fax: (575) 393-0720

DISTRICT II  
811 S. FIRST ST., ARTESIA, NM 88210  
Phone: (575) 748-1283 Fax: (575) 748-8720

DISTRICT III  
1000 RIO BRAZOS RD., AZTEC, NM 87410  
Phone: (505) 334-6178 Fax: (505) 334-6170

DISTRICT IV  
1220 S. ST. FRANCIS DR., SANTA FE, NM 87505  
Phone: (505) 476-3460 Fax: (505) 476-3462

State of New Mexico Rec'd 8/14/2020 - NMOCD  
Energy, Minerals & Natural Resources Department  
**OIL CONSERVATION DIVISION**  
1220 SOUTH ST. FRANCIS DR.  
Santa Fe, New Mexico 87505

Form C-102  
Revised August 1, 2011  
Submit one copy to appropriate  
District Office

☐ AMENDED REPORT

**WELL LOCATION AND ACREAGE DEDICATION PLAT**

API Number <b>30-025-45641</b>	Pool Code <b>98135</b>	Pool Name <b>WC-025 G-09 S243310P;UPPER WOLFCAMP</b>
Property Code	Property Name <b>BELL LAKE 19-18 STATE COM</b>	Well Number <b>34H</b>
OGRID No. <b>6137</b>	Operator Name <b>DEVON ENERGY PRODUCTION COMPANY, L.P.</b>	Elevation <b>3546.9'</b>

**Surface Location**

UL or lot No.	Section	Township	Range	Lot Idn	Feet from the	North/South line	Feet from the	East/West line	County
N	19	24-S	33-E		338	SOUTH	1682	WEST	LEA

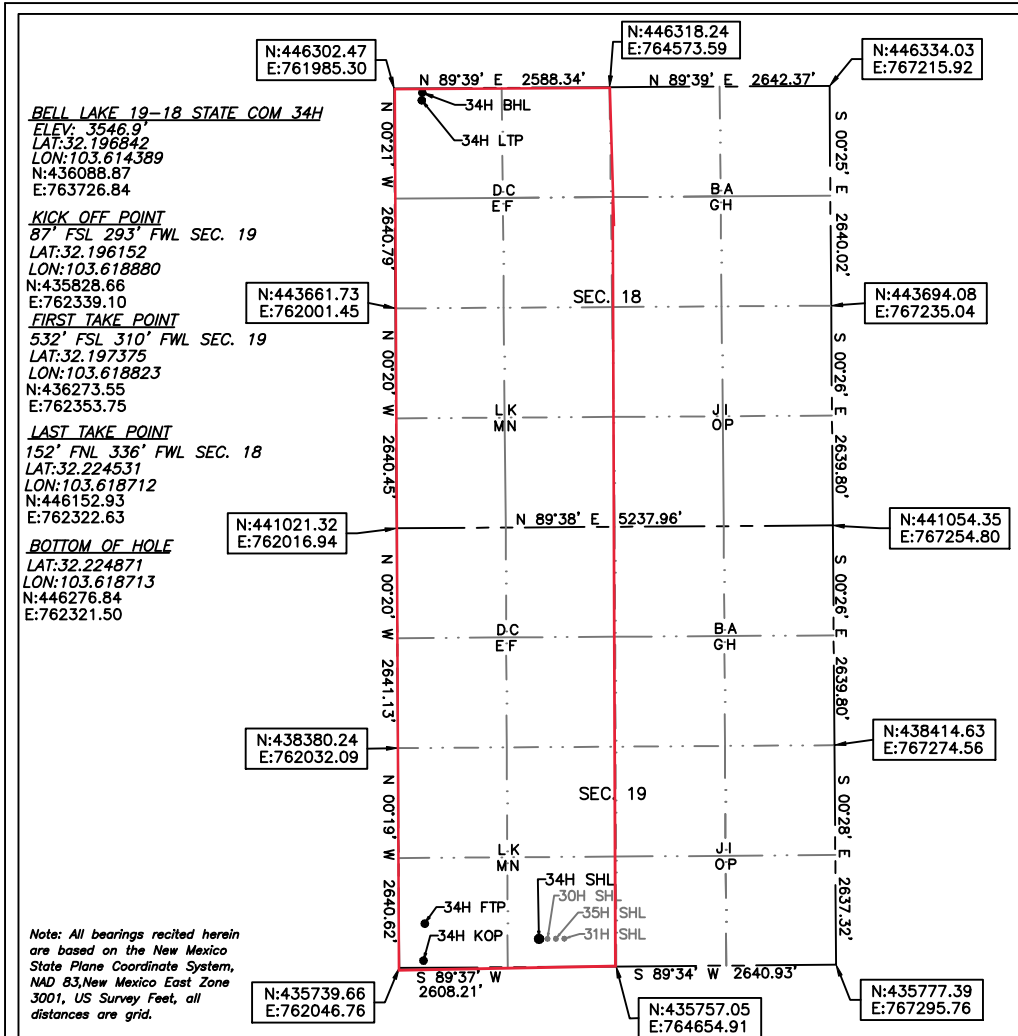
**Bottom Hole Location If Different From Surface**

**SL**

UL or lot No.	Section	Township	Range	Lot Idn	Feet from the	North/South line	Feet from the	East/West line	County
D	18	24-S	33-E		28	NORTH	336	WEST	LEA

Dedicated Acres <b>629.6</b>	Joint or Infill	Consolidation Code	Order No.
---------------------------------	-----------------	--------------------	-----------

**NO ALLOWABLE WILL BE ASSIGNED TO THIS COMPLETION UNTIL ALL INTERESTS HAVE BEEN CONSOLIDATED  
OR A NON-STANDARD UNIT HAS BEEN APPROVED BY THE DIVISION**



**OPERATOR CERTIFICATION**

I hereby certify that the information herein is true and complete to the best of my knowledge and belief, and that this organization either owns a working interest or unleased mineral interest in the land including the proposed bottom hole location or has a right to drill this well at this location pursuant to a contract with an owner of such mineral or working interest, or to a voluntary pooling agreement or a compulsory pooling order heretofore entered by the division.

*Rebecca Deal* 7/14/2020  
Signature Date

Rebecca Deal, Regulatory Analyst  
Printed Name

rebecca.deal@dvn.com  
E-mail Address

**SURVEYOR CERTIFICATION**

I hereby certify that the well location shown on this plat was plotted from field notes of actual surveys made by me or under my supervision, and that the same is true and correct to the best of my belief.

7/2020

Date of Survey

Signature & Seal of Professional Surveyor



07/13/20

Certificate No. 22404 B.L. LAMAN

DRAWN BY: CM

Intent ☐ As Drilled ☒

API #

Operator Name: DEVON ENERGY PRODUCTION COMPANY, LP.	Property Name: BELL LAKE 19-18 STATE COM	Well Number 34H
---	---	--------------------

## Kick Off Point (KOP)

UL M	Section 19	Township 24-S	Range 33-E	Lot	Feet 87	From N/S SOUTH	Feet 293	From E/W WEST	County LEA
Latitude 32.196152					Longitude 103.618880				NAD 83

## First Take Point (FTP)

UL M	Section 19	Township 24-S	Range 33-E	Lot	Feet 532	From N/S SOUTH	Feet 310	From E/W WEST	County LEA
Latitude 32.197375					Longitude 103.618823				NAD 83

## Last Take Point (LTP)

UL D	Section 18	Township 24-S	Range 33-E	Lot	Feet 152	From N/S NORTH	Feet 336	From E/W WEST	County LEA
Latitude 32.224531					Longitude 103.618712				NAD 83

Is this well the defining well for the Horizontal Spacing Unit? ☐ NIs this well an infill well? ☐ Y

If infill is yes please provide API if available, Operator Name and well number for Defining well for Horizontal Spacing Unit.

API #  
30-025-45638

Operator Name: DEVON ENERGY PRODUCTION COMPANY, LP.	Property Name: BELL LAKE 19-18 STATE COM	Well Number 30H
---	---	--------------------



## **Devon Energy Production Company, L.P.**

**Lea Co, New Mexico (NAD-83)  
SEC 19-24S-33E (BellLake)  
Bell Lake 19-18 State Com 34H**

**Lateral #1**

**Design: As Drilled**

## **Survey Report - Geographic**

**26 May, 2020**



<b>Company:</b>	Devon Energy Production Company, L.P.	<b>Local Co-ordinate Reference:</b>	Site SEC 19-24S-33E (BellLake)
<b>Project:</b>	Lea Co, New Mexico (NAD-83)	<b>TVD Reference:</b>	Rig KB @ 3579.0usft (Cactus 129)
<b>Site:</b>	SEC 19-24S-33E (BellLake)	<b>MD Reference:</b>	Rig KB @ 3579.0usft (Cactus 129)
<b>Well:</b>	Bell Lake 19-18 State Com 34H	<b>North Reference:</b>	Grid
<b>Wellbore:</b>	Lateral #1	<b>Survey Calculation Method:</b>	Minimum Curvature
<b>Design:</b>	As Drilled	<b>Database:</b>	Compass_DSN

<b>Project</b>	Lea Co, New Mexico (NAD-83)		
<b>Map System:</b>	US State Plane 1983	<b>System Datum:</b>	Mean Sea Level
<b>Geo Datum:</b>	North American Datum 1983		
<b>Map Zone:</b>	New Mexico Eastern Zone		

Site		SEC 19-24S-33E (BellLake)					
Site Position:		Northing:	435,944.33	usft	Latitude:	32° 11' 47.265 N	
From:	Map	Easting:	762,745.54	usft	Longitude:	103° 37' 3.230 W	
Position Uncertainty:	0.0	usft	Slot Radius:	13-3/16	"	Grid Convergence:	0.38 °

Well	Bell Lake 19-18 State Com 34H					
Well Position	+N/-S	144.5 usft	Northing:	436,088.87 usft	Latitude:	32° 11' 48.630 N
	+E/-W	981.3 usft	Easting:	763,726.84 usft	Longitude:	103° 36' 51.799 W
Position Uncertainty		0.0 usft	Wellhead Elevation:	0.0 usft	Ground Level:	3,549.0 usft

<b>Wellbore</b>	Lateral #1				
<b>Magnetics</b>	<b>Model Name</b>	<b>Sample Date</b>	<b>Declination (°)</b>	<b>Dip Angle (°)</b>	<b>Field Strength (nT)</b>
	IGRF2015	11/7/2019	6.71	60.00	47,670.76628939

<b>Design</b>	As Drilled				
<b>Audit Notes:</b>					
<b>Version:</b>	1.0	<b>Phase:</b>	ACTUAL	<b>Tie On Depth:</b>	0.0
<b>Vertical Section:</b>	<b>Depth From (TVD) (usft)</b>	<b>+N/-S (usft)</b>	<b>+E/-W (usft)</b>	<b>Direction (°)</b>	
	0.0	144.5	981.3	359.67	

<b>Survey Program</b>	<b>Date</b>	5/26/2020			
<b>From (usft)</b>	<b>To (usft)</b>	<b>Survey (Wellbore)</b>	<b>Tool Name</b>	<b>Description</b>	
160.0	1,164.0	Survey #1 (Lateral #1)	GYRO-NS	Gyrocompass Gyro	
1,282.0	22,640.0	Survey #2 (Lateral #1)	MWD	MWD - Skyline	

<b>Survey</b>									
<b>Measured Depth (usft)</b>	<b>Inclination (°)</b>	<b>Azimuth (°)</b>	<b>Vertical Depth (usft)</b>	<b>+N/-S (usft)</b>	<b>+E/-W (usft)</b>	<b>Map Northing (usft)</b>	<b>Map Easting (usft)</b>	<b>Latitude</b>	<b>Longitude</b>
0.0	0.00	0.00	0.0	144.5	981.3	436,088.87	763,726.84	32° 11' 48.630 N	103° 36' 51.799 W
160.0	0.79	30.00	160.0	145.5	981.9	436,089.82	763,727.39	32° 11' 48.640 N	103° 36' 51.793 W
208.0	1.01	29.30	208.0	146.2	982.2	436,090.48	763,727.76	32° 11' 48.646 N	103° 36' 51.789 W
302.0	0.66	359.86	302.0	147.4	982.6	436,091.74	763,728.17	32° 11' 48.659 N	103° 36' 51.784 W
397.0	0.35	16.91	397.0	148.2	982.7	436,092.57	763,728.25	32° 11' 48.667 N	103° 36' 51.783 W
492.0	0.31	28.95	492.0	148.7	982.9	436,093.07	763,728.46	32° 11' 48.672 N	103° 36' 51.780 W
586.0	0.31	35.54	586.0	149.2	983.2	436,093.50	763,728.73	32° 11' 48.676 N	103° 36' 51.777 W
680.0	0.57	338.50	680.0	149.8	983.2	436,094.14	763,728.70	32° 11' 48.683 N	103° 36' 51.777 W
775.0	0.62	348.78	775.0	150.8	982.9	436,095.09	763,728.43	32° 11' 48.692 N	103° 36' 51.780 W
869.0	0.57	327.16	869.0	151.6	982.5	436,095.98	763,728.08	32° 11' 48.701 N	103° 36' 51.784 W
964.0	0.26	7.68	964.0	152.3	982.3	436,096.59	763,727.85	32° 11' 48.707 N	103° 36' 51.787 W

<b>Company:</b>	Devon Energy Production Company, L.P.	<b>Local Co-ordinate Reference:</b>	Site SEC 19-24S-33E (BellLake)
<b>Project:</b>	Lea Co, New Mexico (NAD-83)	<b>TVD Reference:</b>	Rig KB @ 3579.0usft (Cactus 129)
<b>Site:</b>	SEC 19-24S-33E (BellLake)	<b>MD Reference:</b>	Rig KB @ 3579.0usft (Cactus 129)
<b>Well:</b>	Bell Lake 19-18 State Com 34H	<b>North Reference:</b>	Grid
<b>Wellbore:</b>	Lateral #1	<b>Survey Calculation Method:</b>	Minimum Curvature
<b>Design:</b>	As Drilled	<b>Database:</b>	Compass_DSN

Survey									
Measured Depth (usft)	Inclination (°)	Azimuth (°)	Vertical Depth (usft)	+N/-S (usft)	+E/-W (usft)	Map Northing (usft)	Map Easting (usft)	Latitude	Longitude
1,058.0	0.09	28.77	1,058.0	152.5	982.4	436,096.87	763,727.92	32° 11' 48.710 N	103° 36' 51.786 W
1,164.0	0.44	316.09	1,164.0	152.9	982.1	436,097.23	763,727.67	32° 11' 48.713 N	103° 36' 51.789 W
1,282.0	0.40	134.80	1,282.0	152.9	982.1	436,097.27	763,727.65	32° 11' 48.714 N	103° 36' 51.789 W
<b>First Survey</b>									
1,377.0	2.68	292.50	1,376.9	153.6	980.3	436,097.88	763,725.83	32° 11' 48.720 N	103° 36' 51.810 W
1,472.0	3.12	281.78	1,471.8	154.9	975.7	436,099.26	763,721.25	32° 11' 48.734 N	103° 36' 51.864 W
1,566.0	2.90	289.43	1,565.7	156.2	971.0	436,100.58	763,716.50	32° 11' 48.747 N	103° 36' 51.919 W
1,661.0	3.08	285.73	1,660.5	157.7	966.2	436,102.07	763,711.78	32° 11' 48.762 N	103° 36' 51.974 W
1,755.0	2.95	291.71	1,754.4	159.3	961.6	436,103.65	763,707.10	32° 11' 48.778 N	103° 36' 52.028 W
1,850.0	3.03	289.87	1,849.3	161.1	956.9	436,105.40	763,702.47	32° 11' 48.796 N	103° 36' 52.082 W
1,944.0	3.82	281.16	1,943.1	162.5	951.5	436,106.85	763,697.06	32° 11' 48.810 N	103° 36' 52.145 W
2,038.0	5.36	260.33	2,036.8	162.4	944.1	436,106.72	763,689.66	32° 11' 48.810 N	103° 36' 52.231 W
2,133.0	6.33	250.93	2,131.3	159.9	934.8	436,104.27	763,680.34	32° 11' 48.786 N	103° 36' 52.339 W
2,227.0	6.77	256.99	2,224.7	157.0	924.5	436,101.33	763,670.04	32° 11' 48.758 N	103° 36' 52.459 W
2,322.0	7.91	260.25	2,318.9	154.6	912.6	436,098.96	763,658.14	32° 11' 48.735 N	103° 36' 52.598 W
2,416.0	9.76	262.27	2,411.8	152.5	898.3	436,096.79	763,643.87	32° 11' 48.714 N	103° 36' 52.764 W
2,511.0	10.07	264.11	2,505.4	150.5	882.1	436,094.86	763,627.63	32° 11' 48.696 N	103° 36' 52.954 W
2,606.0	9.89	264.82	2,599.0	148.9	865.7	436,093.27	763,611.24	32° 11' 48.682 N	103° 36' 53.144 W
2,700.0	9.58	264.55	2,691.6	147.5	849.9	436,091.79	763,595.42	32° 11' 48.668 N	103° 36' 53.329 W
2,796.0	10.46	260.16	2,786.1	145.2	833.3	436,089.55	763,578.88	32° 11' 48.647 N	103° 36' 53.521 W
2,891.0	10.51	259.72	2,879.6	142.2	816.3	436,086.53	763,561.86	32° 11' 48.618 N	103° 36' 53.720 W
2,985.0	10.20	259.63	2,972.0	139.2	799.7	436,083.50	763,545.23	32° 11' 48.589 N	103° 36' 53.913 W
3,081.0	9.76	259.89	3,066.6	136.2	783.3	436,080.54	763,528.86	32° 11' 48.561 N	103° 36' 54.104 W
3,176.0	9.36	259.46	3,160.3	133.4	767.8	436,077.71	763,513.34	32° 11' 48.534 N	103° 36' 54.285 W
3,272.0	9.01	261.21	3,255.0	130.8	752.7	436,075.14	763,498.24	32° 11' 48.510 N	103° 36' 54.461 W
3,367.0	9.80	257.87	3,348.7	128.0	737.4	436,072.30	763,482.98	32° 11' 48.483 N	103° 36' 54.639 W
3,463.0	9.93	257.35	3,443.3	124.4	721.4	436,068.77	763,466.92	32° 11' 48.449 N	103° 36' 54.826 W
3,559.0	9.27	257.35	3,538.0	120.9	705.8	436,065.27	763,451.29	32° 11' 48.415 N	103° 36' 55.008 W
3,654.0	8.40	255.50	3,631.9	117.5	691.6	436,061.85	763,437.11	32° 11' 48.382 N	103° 36' 55.173 W
3,749.0	9.10	259.28	3,725.7	114.4	677.5	436,058.72	763,423.01	32° 11' 48.352 N	103° 36' 55.338 W
3,845.0	8.97	262.18	3,820.6	112.0	662.6	436,056.29	763,408.14	32° 11' 48.329 N	103° 36' 55.511 W
3,940.0	8.48	261.65	3,914.5	109.9	648.3	436,054.26	763,393.87	32° 11' 48.310 N	103° 36' 55.677 W
4,036.0	8.35	253.57	4,009.4	106.9	634.6	436,051.26	763,380.18	32° 11' 48.281 N	103° 36' 55.837 W
4,132.0	8.26	257.70	4,104.4	103.5	621.2	436,047.82	763,366.76	32° 11' 48.248 N	103° 36' 55.993 W
4,227.0	7.74	258.58	4,198.5	100.8	608.3	436,045.10	763,353.82	32° 11' 48.222 N	103° 36' 56.144 W
4,323.0	8.09	259.19	4,293.6	98.2	595.3	436,042.55	763,340.85	32° 11' 48.198 N	103° 36' 56.295 W
4,418.0	9.01	260.07	4,387.5	95.7	581.4	436,040.02	763,326.95	32° 11' 48.174 N	103° 36' 56.457 W
4,514.0	10.11	257.43	4,482.2	92.6	565.8	436,036.89	763,311.32	32° 11' 48.144 N	103° 36' 56.639 W
4,610.0	9.58	251.72	4,576.8	88.2	550.0	436,032.55	763,295.51	32° 11' 48.102 N	103° 36' 56.823 W
4,705.0	8.79	253.57	4,670.6	83.7	535.5	436,028.02	763,281.05	32° 11' 48.058 N	103° 36' 56.992 W
4,801.0	10.11	265.61	4,765.3	81.0	520.1	436,025.30	763,265.61	32° 11' 48.032 N	103° 36' 57.172 W
4,896.0	10.55	260.95	4,858.7	79.0	503.2	436,023.29	763,248.70	32° 11' 48.013 N	103° 36' 57.369 W
4,992.0	11.82	258.58	4,952.9	75.6	484.8	436,019.96	763,230.39	32° 11' 47.981 N	103° 36' 57.582 W
5,087.0	10.90	257.79	5,046.0	71.8	466.5	436,016.13	763,212.07	32° 11' 47.945 N	103° 36' 57.796 W
5,183.0	11.08	256.47	5,140.3	67.7	448.7	436,012.06	763,194.23	32° 11' 47.906 N	103° 36' 58.004 W
5,279.0	10.90	256.03	5,234.5	63.4	430.9	436,007.71	763,176.45	32° 11' 47.864 N	103° 36' 58.211 W
5,374.0	10.55	254.97	5,327.9	59.0	413.8	436,003.28	763,159.34	32° 11' 47.821 N	103° 36' 58.410 W
5,470.0	11.43	260.07	5,422.1	55.0	395.9	435,999.36	763,141.48	32° 11' 47.783 N	103° 36' 58.618 W
5,565.0	11.56	262.71	5,515.2	52.2	377.2	435,996.53	763,122.77	32° 11' 47.757 N	103° 36' 58.836 W
5,661.0	11.16	260.77	5,609.3	49.5	358.5	435,993.82	763,104.05	32° 11' 47.731 N	103° 36' 59.054 W
5,756.0	10.99	261.56	5,702.5	46.7	340.5	435,991.02	763,086.02	32° 11' 47.705 N	103° 36' 59.264 W
5,852.0	10.81	261.04	5,796.8	43.9	322.5	435,988.27	763,068.08	32° 11' 47.679 N	103° 36' 59.474 W
5,947.0	9.85	259.98	5,890.3	41.1	305.7	435,985.47	763,051.28	32° 11' 47.652 N	103° 36' 59.669 W
6,043.0	9.41	260.69	5,984.9	38.4	289.9	435,982.77	763,035.45	32° 11' 47.626 N	103° 36' 59.854 W
6,138.0	8.97	259.54	6,078.7	35.8	275.0	435,980.17	763,020.50	32° 11' 47.602 N	103° 37' 0.028 W

<b>Company:</b>	Devon Energy Production Company, L.P.	<b>Local Co-ordinate Reference:</b>	Site SEC 19-24S-33E (BellLake)
<b>Project:</b>	Lea Co, New Mexico (NAD-83)	<b>TVD Reference:</b>	Rig KB @ 3579.0usft (Cactus 129)
<b>Site:</b>	SEC 19-24S-33E (BellLake)	<b>MD Reference:</b>	Rig KB @ 3579.0usft (Cactus 129)
<b>Well:</b>	Bell Lake 19-18 State Com 34H	<b>North Reference:</b>	Grid
<b>Wellbore:</b>	Lateral #1	<b>Survey Calculation Method:</b>	Minimum Curvature
<b>Design:</b>	As Drilled	<b>Database:</b>	Compass_DSN

Survey									
Measured Depth (usft)	Inclination (°)	Azimuth (°)	Vertical Depth (usft)	+N/-S (usft)	+E/-W (usft)	Map Northing (usft)	Map Easting (usft)	Latitude	Longitude
6,233.0	8.31	265.08	6,172.6	33.9	260.8	435,978.24	763,006.37	32° 11' 47.583 N	103° 37' 0.192 W
6,329.0	10.24	265.08	6,267.4	32.6	245.4	435,976.91	762,990.96	32° 11' 47.571 N	103° 37' 0.372 W
6,423.0	11.34	260.86	6,359.7	30.4	228.0	435,974.73	762,973.51	32° 11' 47.551 N	103° 37' 0.575 W
6,518.0	11.96	259.10	6,452.7	27.1	209.1	435,971.38	762,954.62	32° 11' 47.519 N	103° 37' 0.795 W
6,613.0	11.56	258.14	6,545.7	23.2	190.1	435,967.56	762,935.64	32° 11' 47.482 N	103° 37' 1.016 W
6,707.0	10.86	257.70	6,638.0	19.4	172.2	435,963.74	762,917.77	32° 11' 47.446 N	103° 37' 1.225 W
6,802.0	10.07	258.49	6,731.4	15.8	155.4	435,960.18	762,900.89	32° 11' 47.412 N	103° 37' 1.421 W
6,896.0	9.54	258.75	6,824.0	12.7	139.7	435,957.02	762,885.20	32° 11' 47.381 N	103° 37' 1.604 W
6,991.0	8.84	258.14	6,917.8	9.7	124.8	435,953.98	762,870.33	32° 11' 47.352 N	103° 37' 1.777 W
7,086.0	8.79	256.12	7,011.7	6.4	110.6	435,950.74	762,856.14	32° 11' 47.321 N	103° 37' 1.943 W
7,180.0	8.48	256.64	7,104.6	3.1	96.9	435,947.42	762,842.43	32° 11' 47.289 N	103° 37' 2.103 W
7,274.0	8.35	255.06	7,197.6	-0.3	83.6	435,944.06	762,829.09	32° 11' 47.257 N	103° 37' 2.258 W
7,369.0	8.09	256.55	7,291.6	-3.6	70.4	435,940.72	762,815.92	32° 11' 47.225 N	103° 37' 2.412 W
7,464.0	7.87	259.72	7,385.7	-6.3	57.5	435,938.01	762,803.02	32° 11' 47.199 N	103° 37' 2.562 W
7,558.0	7.56	259.10	7,478.8	-8.6	45.1	435,935.69	762,790.62	32° 11' 47.177 N	103° 37' 2.707 W
7,653.0	8.79	260.60	7,572.9	-11.0	31.8	435,933.32	762,777.32	32° 11' 47.154 N	103° 37' 2.861 W
7,747.0	10.73	259.19	7,665.5	-13.8	16.1	435,930.51	762,761.64	32° 11' 47.127 N	103° 37' 3.044 W
7,842.0	10.33	260.60	7,758.9	-16.9	-1.0	435,927.46	762,744.55	32° 11' 47.098 N	103° 37' 3.243 W
7,937.0	9.80	260.25	7,852.4	-19.6	-17.4	435,924.70	762,728.17	32° 11' 47.072 N	103° 37' 3.434 W
8,032.0	10.73	257.43	7,945.9	-22.9	-34.0	435,921.40	762,711.57	32° 11' 47.040 N	103° 37' 3.627 W
8,128.0	10.55	257.87	8,040.3	-26.7	-51.3	435,917.61	762,694.26	32° 11' 47.004 N	103° 37' 3.829 W
8,224.0	9.49	257.08	8,134.8	-30.3	-67.6	435,914.00	762,677.95	32° 11' 46.969 N	103° 37' 4.019 W
8,319.0	8.84	255.41	8,228.6	-33.9	-82.3	435,910.41	762,663.25	32° 11' 46.935 N	103° 37' 4.191 W
8,414.0	9.63	260.16	8,322.4	-37.1	-97.2	435,907.21	762,648.36	32° 11' 46.904 N	103° 37' 4.364 W
8,510.0	9.23	259.63	8,417.1	-39.9	-112.7	435,904.45	762,632.88	32° 11' 46.878 N	103° 37' 4.545 W
8,606.0	9.58	263.76	8,511.8	-42.1	-128.2	435,902.20	762,617.36	32° 11' 46.857 N	103° 37' 4.725 W
8,701.0	8.97	263.50	8,605.5	-43.8	-143.4	435,900.50	762,602.14	32° 11' 46.841 N	103° 37' 4.903 W
8,797.0	9.58	261.74	8,700.3	-45.8	-158.7	435,898.50	762,586.80	32° 11' 46.822 N	103° 37' 5.081 W
8,892.0	8.92	260.86	8,794.0	-48.1	-173.8	435,896.20	762,571.71	32° 11' 46.800 N	103° 37' 5.257 W
8,988.0	8.22	260.86	8,889.0	-50.4	-188.0	435,893.93	762,557.58	32° 11' 46.779 N	103° 37' 5.422 W
9,083.0	7.43	258.05	8,983.1	-52.8	-200.7	435,891.58	762,544.87	32° 11' 46.756 N	103° 37' 5.570 W
9,179.0	6.77	259.89	9,078.3	-55.0	-212.3	435,889.30	762,533.23	32° 11' 46.734 N	103° 37' 5.705 W
9,274.0	5.49	260.86	9,172.8	-56.7	-222.3	435,887.59	762,523.23	32° 11' 46.718 N	103° 37' 5.822 W
9,370.0	5.67	254.36	9,268.3	-58.7	-231.4	435,885.58	762,514.13	32° 11' 46.699 N	103° 37' 5.928 W
9,466.0	6.24	260.77	9,363.8	-60.9	-241.1	435,883.47	762,504.41	32° 11' 46.679 N	103° 37' 6.041 W
9,561.0	5.71	259.89	9,458.3	-62.5	-250.9	435,881.81	762,494.66	32° 11' 46.663 N	103° 37' 6.155 W
9,657.0	4.92	256.64	9,553.9	-64.3	-259.6	435,880.02	762,485.95	32° 11' 46.646 N	103° 37' 6.256 W
9,752.0	5.67	261.12	9,648.5	-66.0	-268.2	435,878.36	762,477.35	32° 11' 46.630 N	103° 37' 6.356 W
9,848.0	8.70	262.44	9,743.7	-67.7	-280.1	435,876.67	762,465.47	32° 11' 46.614 N	103° 37' 6.495 W
9,943.0	9.05	256.64	9,837.6	-70.3	-294.5	435,874.00	762,451.07	32° 11' 46.588 N	103° 37' 6.663 W
10,039.0	8.97	260.42	9,932.4	-73.3	-309.2	435,871.01	762,436.35	32° 11' 46.560 N	103° 37' 6.834 W
10,135.0	8.75	256.38	10,027.3	-76.3	-323.7	435,868.04	762,421.87	32° 11' 46.531 N	103° 37' 7.003 W
10,230.0	8.00	251.37	10,121.3	-80.1	-337.0	435,864.23	762,408.59	32° 11' 46.495 N	103° 37' 7.158 W
10,326.0	6.55	235.37	10,216.5	-85.3	-347.8	435,858.98	762,397.75	32° 11' 46.443 N	103° 37' 7.284 W
10,421.0	6.07	234.85	10,310.9	-91.3	-356.4	435,853.01	762,389.18	32° 11' 46.385 N	103° 37' 7.385 W
10,516.0	5.05	241.00	10,405.5	-96.2	-364.1	435,848.09	762,381.42	32° 11' 46.337 N	103° 37' 7.475 W
10,612.0	3.43	237.92	10,501.2	-99.8	-370.2	435,844.52	762,375.29	32° 11' 46.302 N	103° 37' 7.547 W
10,708.0	3.03	234.76	10,597.0	-102.8	-374.8	435,841.53	762,370.78	32° 11' 46.272 N	103° 37' 7.600 W
10,803.0	2.46	244.34	10,691.9	-105.1	-378.6	435,839.20	762,366.90	32° 11' 46.250 N	103° 37' 7.645 W
10,899.0	2.55	247.59	10,787.8	-106.8	-382.5	435,837.49	762,363.06	32° 11' 46.233 N	103° 37' 7.690 W
10,994.0	2.07	241.09	10,882.8	-108.5	-385.9	435,835.85	762,359.61	32° 11' 46.217 N	103° 37' 7.730 W
11,090.0	1.14	240.21	10,978.7	-109.8	-388.3	435,834.54	762,357.26	32° 11' 46.204 N	103° 37' 7.757 W
11,185.0	1.58	243.28	11,073.7	-110.8	-390.3	435,833.48	762,355.27	32° 11' 46.194 N	103° 37' 7.781 W
11,280.0	1.85	248.38	11,168.7	-112.0	-392.9	435,832.33	762,352.68	32° 11' 46.183 N	103° 37' 7.811 W
11,376.0	1.71	234.93	11,264.6	-113.4	-395.5	435,830.94	762,350.06	32° 11' 46.169 N	103° 37' 7.841 W

<b>Company:</b>	Devon Energy Production Company, L.P.	<b>Local Co-ordinate Reference:</b>	Site SEC 19-24S-33E (BellLake)
<b>Project:</b>	Lea Co, New Mexico (NAD-83)	<b>TVD Reference:</b>	Rig KB @ 3579.0usft (Cactus 129)
<b>Site:</b>	SEC 19-24S-33E (BellLake)	<b>MD Reference:</b>	Rig KB @ 3579.0usft (Cactus 129)
<b>Well:</b>	Bell Lake 19-18 State Com 34H	<b>North Reference:</b>	Grid
<b>Wellbore:</b>	Lateral #1	<b>Survey Calculation Method:</b>	Minimum Curvature
<b>Design:</b>	As Drilled	<b>Database:</b>	Compass_DSN

Survey									
Measured Depth (usft)	Inclination (°)	Azimuth (°)	Vertical Depth (usft)	+N/-S (usft)	+E/-W (usft)	Map Northing (usft)	Map Easting (usft)	Latitude	Longitude
11,472.0	1.63	234.58	11,360.6	-115.0	-397.8	435,829.32	762,347.78	32° 11' 46.153 N	103° 37' 7.868 W
11,568.0	1.45	259.37	11,456.5	-116.0	-400.1	435,828.31	762,345.47	32° 11' 46.143 N	103° 37' 7.895 W
11,663.0	1.80	266.31	11,551.5	-116.3	-402.7	435,827.99	762,342.80	32° 11' 46.140 N	103° 37' 7.926 W
11,759.0	1.01	291.01	11,647.5	-116.1	-405.0	435,828.19	762,340.51	32° 11' 46.142 N	103° 37' 7.953 W
11,797.0	0.92	297.42	11,685.5	-115.9	-405.6	435,828.46	762,339.92	32° 11' 46.145 N	103° 37' 7.960 W
11,863.0	1.14	289.87	11,751.5	-115.4	-406.7	435,828.92	762,338.84	32° 11' 46.150 N	103° 37' 7.972 W
11,958.0	4.84	19.34	11,846.3	-111.3	-406.3	435,833.03	762,339.27	32° 11' 46.190 N	103° 37' 7.967 W
12,053.0	15.96	357.54	11,939.7	-94.4	-405.5	435,849.92	762,340.04	32° 11' 46.357 N	103° 37' 7.957 W
12,149.0	29.89	352.09	12,027.9	-57.3	-409.4	435,886.98	762,336.17	32° 11' 46.724 N	103° 37' 7.999 W
12,244.0	41.98	357.10	12,104.7	-2.0	-414.3	435,942.38	762,331.28	32° 11' 47.273 N	103° 37' 8.051 W
12,292.0	48.40	358.68	12,138.5	32.1	-415.5	435,976.39	762,330.05	32° 11' 47.610 N	103° 37' 8.063 W
12,340.0	55.38	1.14	12,168.1	69.8	-415.5	436,014.13	762,330.03	32° 11' 47.983 N	103° 37' 8.060 W
12,398.0	59.30	5.36	12,199.4	118.5	-412.7	436,062.85	762,332.84	32° 11' 48.465 N	103° 37' 8.024 W
12,435.0	64.84	5.80	12,216.7	151.0	-409.5	436,095.37	762,336.02	32° 11' 48.787 N	103° 37' 7.984 W
12,482.0	68.00	6.07	12,235.5	193.9	-405.1	436,138.21	762,340.48	32° 11' 49.210 N	103° 37' 7.929 W
12,531.0	69.71	6.77	12,253.2	239.3	-399.9	436,183.62	762,345.59	32° 11' 49.659 N	103° 37' 7.866 W
12,579.0	72.09	5.36	12,268.9	284.4	-395.2	436,228.72	762,350.38	32° 11' 50.105 N	103° 37' 7.807 W
12,626.0	74.07	3.25	12,282.6	329.2	-391.8	436,273.55	762,353.75	32° 11' 50.549 N	103° 37' 7.764 W
12,721.0	82.51	5.01	12,301.8	421.9	-385.1	436,366.25	762,360.46	32° 11' 51.465 N	103° 37' 7.679 W
12,817.0	87.21	4.75	12,310.4	517.2	-376.9	436,461.49	762,368.59	32° 11' 52.407 N	103° 37' 7.577 W
12,912.0	90.07	2.02	12,312.7	611.9	-371.3	436,556.28	762,374.20	32° 11' 53.345 N	103° 37' 7.505 W
13,007.0	90.02	1.67	12,312.6	706.9	-368.3	436,651.23	762,377.26	32° 11' 54.284 N	103° 37' 7.462 W
13,103.0	89.80	0.53	12,312.8	802.9	-366.4	436,747.21	762,379.10	32° 11' 55.234 N	103° 37' 7.433 W
13,199.0	87.30	359.74	12,315.2	898.8	-366.2	436,843.17	762,379.32	32° 11' 56.183 N	103° 37' 7.423 W
13,294.0	86.11	359.65	12,320.6	993.7	-366.7	436,938.01	762,378.82	32° 11' 57.122 N	103° 37' 7.421 W
13,390.0	88.35	359.39	12,325.3	1,089.6	-367.5	437,033.89	762,378.02	32° 11' 58.071 N	103° 37' 7.423 W
13,485.0	93.32	0.71	12,323.9	1,184.5	-367.4	437,128.84	762,378.10	32° 11' 59.010 N	103° 37' 7.415 W
13,581.0	90.46	1.23	12,320.7	1,280.4	-365.8	437,224.77	762,379.72	32° 11' 59.959 N	103° 37' 7.388 W
13,676.0	91.16	1.58	12,319.4	1,375.4	-363.5	437,319.73	762,382.05	32° 12' 0.899 N	103° 37' 7.354 W
13,772.0	91.34	1.50	12,317.3	1,471.3	-360.9	437,415.67	762,384.63	32° 12' 1.848 N	103° 37' 7.317 W
13,868.0	93.14	1.76	12,313.5	1,567.2	-358.2	437,511.55	762,387.36	32° 12' 2.797 N	103° 37' 7.277 W
13,963.0	90.81	1.23	12,310.3	1,662.1	-355.7	437,606.46	762,389.84	32° 12' 3.736 N	103° 37' 7.241 W
14,059.0	88.26	357.28	12,311.1	1,758.1	-356.9	437,702.42	762,388.59	32° 12' 4.685 N	103° 37' 7.248 W
14,154.0	87.96	357.63	12,314.2	1,852.9	-361.2	437,797.28	762,384.37	32° 12' 5.624 N	103° 37' 7.290 W
14,250.0	87.21	356.57	12,318.2	1,948.7	-366.0	437,893.07	762,379.52	32° 12' 6.572 N	103° 37' 7.339 W
14,345.0	89.89	356.31	12,320.6	2,043.5	-371.9	437,987.84	762,373.62	32° 12' 7.511 N	103° 37' 7.400 W
14,441.0	90.29	357.28	12,320.5	2,139.4	-377.3	438,083.69	762,368.26	32° 12' 8.460 N	103° 37' 7.455 W
14,537.0	91.08	356.75	12,319.3	2,235.2	-382.3	438,179.55	762,363.26	32° 12' 9.408 N	103° 37' 7.506 W
14,632.0	91.56	357.10	12,317.1	2,330.1	-387.4	438,274.39	762,358.16	32° 12' 10.347 N	103° 37' 7.558 W
14,728.0	93.10	357.28	12,313.2	2,425.9	-392.1	438,370.19	762,353.46	32° 12' 11.296 N	103° 37' 7.606 W
14,823.0	93.23	359.83	12,308.0	2,520.7	-394.5	438,465.01	762,351.07	32° 12' 12.234 N	103° 37' 7.626 W
14,919.0	89.67	1.14	12,305.6	2,616.6	-393.7	438,560.96	762,351.88	32° 12' 13.183 N	103° 37' 7.609 W
15,014.0	88.31	0.88	12,307.2	2,711.6	-392.0	438,655.93	762,353.56	32° 12' 14.123 N	103° 37' 7.582 W
15,110.0	91.30	0.27	12,307.6	2,807.6	-391.0	438,751.91	762,354.52	32° 12' 15.073 N	103° 37' 7.564 W
15,205.0	93.32	0.88	12,303.7	2,902.5	-390.1	438,846.82	762,355.47	32° 12' 16.012 N	103° 37' 7.545 W
15,301.0	94.64	1.32	12,297.1	2,998.2	-388.2	438,942.57	762,357.31	32° 12' 16.959 N	103° 37' 7.516 W
15,397.0	95.21	1.50	12,288.8	3,093.9	-385.9	439,038.19	762,359.66	32° 12' 17.905 N	103° 37' 7.482 W
15,492.0	92.00	0.27	12,282.9	3,188.6	-384.4	439,132.97	762,361.13	32° 12' 18.843 N	103° 37' 7.457 W
15,588.0	92.22	0.27	12,279.3	3,284.6	-384.0	439,228.91	762,361.58	32° 12' 19.792 N	103° 37' 7.445 W
15,684.0	91.69	359.74	12,276.1	3,380.5	-384.0	439,324.85	762,361.59	32° 12' 20.742 N	103° 37' 7.437 W
15,779.0	92.00	359.91	12,273.0	3,475.5	-384.2	439,419.80	762,361.30	32° 12' 21.681 N	103° 37' 7.433 W
15,874.0	92.26	0.44	12,269.5	3,570.4	-384.0	439,514.73	762,361.59	32° 12' 22.621 N	103° 37' 7.422 W
15,970.0	92.75	0.53	12,265.3	3,666.3	-383.1	439,610.64	762,362.40	32° 12' 23.570 N	103° 37' 7.406 W
16,065.0	91.16	0.97	12,262.0	3,761.2	-381.9	439,705.57	762,363.64	32° 12' 24.509 N	103° 37' 7.384 W
16,161.0	90.99	1.85	12,260.2	3,857.2	-379.5	439,801.53	762,366.00	32° 12' 25.458 N	103° 37' 7.349 W



<b>Company:</b>	Devon Energy Production Company, L.P.	<b>Local Co-ordinate Reference:</b>	Site SEC 19-24S-33E (BellLake)
<b>Project:</b>	Lea Co, New Mexico (NAD-83)	<b>TVD Reference:</b>	Rig KB @ 3579.0usft (Cactus 129)
<b>Site:</b>	SEC 19-24S-33E (BellLake)	<b>MD Reference:</b>	Rig KB @ 3579.0usft (Cactus 129)
<b>Well:</b>	Bell Lake 19-18 State Com 34H	<b>North Reference:</b>	Grid
<b>Wellbore:</b>	Lateral #1	<b>Survey Calculation Method:</b>	Minimum Curvature
<b>Design:</b>	As Drilled	<b>Database:</b>	Compass_DSN

Survey									
Measured Depth (usft)	Inclination (°)	Azimuth (°)	Vertical Depth (usft)	+N/-S (usft)	+E/-W (usft)	Map Northing (usft)	Map Easting (usft)	Latitude	Longitude
16,256.0	90.99	1.76	12,258.6	3,952.1	-376.5	439,896.46	762,368.99	32° 12' 26.397 N	103° 37' 7.307 W
16,352.0	90.86	1.85	12,257.0	4,048.1	-373.5	439,992.40	762,372.02	32° 12' 27.347 N	103° 37' 7.264 W
16,447.0	91.16	0.18	12,255.4	4,143.0	-371.8	440,087.37	762,373.70	32° 12' 28.286 N	103° 37' 7.237 W
16,543.0	90.81	1.41	12,253.7	4,239.0	-370.5	440,183.35	762,375.03	32° 12' 29.236 N	103° 37' 7.214 W
16,638.0	90.02	358.95	12,253.0	4,334.0	-370.2	440,278.33	762,375.33	32° 12' 30.176 N	103° 37' 7.203 W
16,734.0	91.08	357.10	12,252.1	4,429.9	-373.5	440,374.27	762,372.02	32° 12' 31.125 N	103° 37' 7.234 W
16,829.0	92.26	357.28	12,249.3	4,524.8	-378.2	440,469.11	762,367.37	32° 12' 32.064 N	103° 37' 7.281 W
16,925.0	93.05	357.01	12,244.9	4,620.6	-382.9	440,564.89	762,362.59	32° 12' 33.012 N	103° 37' 7.329 W
17,021.0	93.49	357.63	12,239.4	4,716.3	-387.4	440,660.63	762,358.11	32° 12' 33.960 N	103° 37' 7.374 W
17,116.0	92.13	358.07	12,234.8	4,811.1	-391.0	440,755.44	762,354.55	32° 12' 34.898 N	103° 37' 7.408 W
17,212.0	89.93	358.33	12,233.0	4,907.0	-394.0	440,851.37	762,351.54	32° 12' 35.848 N	103° 37' 7.436 W
17,308.0	89.71	358.60	12,233.3	5,003.0	-396.6	440,947.34	762,348.96	32° 12' 36.798 N	103° 37' 7.458 W
17,384.1	89.57	357.75	12,233.8	5,079.1	-399.0	441,023.40	762,346.54	32° 12' 37.550 N	103° 37' 7.481 W
<b>Cross Section 19 to 18; 17384' MD, 329' FWL</b>									
17,403.0	89.54	357.54	12,234.0	5,098.0	-399.8	441,042.28	762,345.76	32° 12' 37.737 N	103° 37' 7.488 W
17,499.0	90.29	358.07	12,234.1	5,193.9	-403.4	441,138.21	762,342.09	32° 12' 38.687 N	103° 37' 7.524 W
17,594.0	90.81	358.33	12,233.2	5,288.8	-406.4	441,233.16	762,339.10	32° 12' 39.626 N	103° 37' 7.551 W
17,690.0	91.21	358.16	12,231.5	5,384.8	-409.4	441,329.10	762,336.16	32° 12' 40.576 N	103° 37' 7.578 W
17,785.0	91.47	358.51	12,229.3	5,479.7	-412.1	441,424.03	762,333.40	32° 12' 41.516 N	103° 37' 7.603 W
17,881.0	92.00	359.04	12,226.4	5,575.6	-414.2	441,519.97	762,331.35	32° 12' 42.465 N	103° 37' 7.619 W
17,977.0	90.73	0.44	12,224.1	5,671.6	-414.6	441,615.93	762,330.92	32° 12' 43.415 N	103° 37' 7.617 W
18,072.0	90.55	0.79	12,223.0	5,766.6	-413.6	441,710.92	762,331.94	32° 12' 44.355 N	103° 37' 7.598 W
18,168.0	89.19	0.44	12,223.2	5,862.6	-412.6	441,806.91	762,332.97	32° 12' 45.304 N	103° 37' 7.578 W
18,263.0	88.48	0.09	12,225.2	5,957.6	-412.1	441,901.89	762,333.41	32° 12' 46.244 N	103° 37' 7.566 W
18,359.0	87.43	359.21	12,228.6	6,053.5	-412.7	441,997.83	762,332.82	32° 12' 47.193 N	103° 37' 7.565 W
18,455.0	89.27	359.21	12,231.4	6,149.4	-414.0	442,093.77	762,331.50	32° 12' 48.143 N	103° 37' 7.573 W
18,550.0	89.58	359.21	12,232.3	6,244.4	-415.3	442,188.76	762,330.19	32° 12' 49.083 N	103° 37' 7.581 W
18,646.0	89.89	359.74	12,232.8	6,340.4	-416.2	442,284.75	762,329.31	32° 12' 50.033 N	103° 37' 7.584 W
18,742.0	89.93	359.74	12,232.9	6,436.4	-416.7	442,380.75	762,328.87	32° 12' 50.983 N	103° 37' 7.581 W
18,837.0	90.29	359.83	12,232.7	6,531.4	-417.0	442,475.75	762,328.52	32° 12' 51.923 N	103° 37' 7.578 W
18,933.0	90.42	0.53	12,232.1	6,627.4	-416.7	442,571.75	762,328.82	32° 12' 52.873 N	103° 37' 7.567 W
19,029.0	89.71	0.53	12,232.0	6,723.4	-415.8	442,667.74	762,329.71	32° 12' 53.823 N	103° 37' 7.549 W
19,124.0	89.89	0.35	12,232.3	6,818.4	-415.1	442,762.74	762,330.44	32° 12' 54.763 N	103° 37' 7.534 W
19,220.0	89.10	359.39	12,233.2	6,914.4	-415.3	442,858.73	762,330.22	32° 12' 55.713 N	103° 37' 7.529 W
19,315.0	89.63	0.09	12,234.2	7,009.4	-415.7	442,953.73	762,329.79	32° 12' 56.653 N	103° 37' 7.526 W
19,411.0	90.51	1.14	12,234.1	7,105.4	-414.7	443,049.72	762,330.82	32° 12' 57.602 N	103° 37' 7.507 W
19,506.0	90.64	1.58	12,233.2	7,200.4	-412.5	443,144.69	762,333.07	32° 12' 58.542 N	103° 37' 7.473 W
19,602.0	91.47	1.58	12,231.4	7,296.3	-409.8	443,240.63	762,335.72	32° 12' 59.491 N	103° 37' 7.435 W
19,698.0	92.18	1.85	12,228.4	7,392.2	-406.9	443,336.54	762,338.59	32° 13' 0.440 N	103° 37' 7.394 W
19,793.0	91.38	2.02	12,225.4	7,487.1	-403.7	443,431.44	762,341.80	32° 13' 1.379 N	103° 37' 7.350 W
19,889.0	89.19	2.29	12,224.9	7,583.0	-400.1	443,527.37	762,345.41	32° 13' 2.328 N	103° 37' 7.300 W
19,984.0	90.11	2.90	12,225.5	7,677.9	-395.8	443,622.26	762,349.71	32° 13' 3.267 N	103° 37' 7.243 W
20,079.0	88.57	1.67	12,226.6	7,772.8	-392.0	443,717.18	762,353.50	32° 13' 4.206 N	103° 37' 7.191 W
20,175.0	88.18	0.44	12,229.3	7,868.8	-390.3	443,813.12	762,355.26	32° 13' 5.155 N	103° 37' 7.163 W
20,271.0	90.81	0.70	12,230.2	7,964.8	-389.3	443,909.10	762,356.22	32° 13' 6.105 N	103° 37' 7.145 W
20,366.0	92.00	1.06	12,227.8	8,059.7	-387.9	444,004.06	762,357.68	32° 13' 7.044 N	103° 37' 7.121 W
20,462.0	92.00	0.79	12,224.5	8,155.7	-386.3	444,099.99	762,359.22	32° 13' 7.993 N	103° 37' 7.095 W
20,557.0	92.48	1.76	12,220.8	8,250.6	-384.2	444,194.89	762,361.34	32° 13' 8.932 N	103° 37' 7.063 W
20,653.0	91.21	0.79	12,217.7	8,346.5	-382.1	444,290.82	762,363.47	32° 13' 9.881 N	103° 37' 7.031 W
20,748.0	89.85	0.62	12,216.8	8,441.5	-380.9	444,385.80	762,364.64	32° 13' 10.821 N	103° 37' 7.010 W
20,844.0	89.58	0.44	12,217.3	8,537.5	-380.0	444,481.80	762,365.53	32° 13' 11.771 N	103° 37' 6.992 W
20,939.0	88.88	0.27	12,218.6	8,632.5	-379.4	444,576.79	762,366.12	32° 13' 12.711 N	103° 37' 6.978 W
21,035.0	89.32	358.60	12,220.1	8,728.4	-380.4	444,672.77	762,365.17	32° 13' 13.661 N	103° 37' 6.981 W
21,131.0	88.53	357.89	12,221.9	8,824.4	-383.3	444,768.70	762,362.23	32° 13' 14.610 N	103° 37' 7.008 W
21,226.0	88.53	358.24	12,224.3	8,919.3	-386.5	444,863.62	762,359.02	32° 13' 15.550 N	103° 37' 7.038 W



<b>Company:</b>	Devon Energy Production Company, L.P.	<b>Local Co-ordinate Reference:</b>	Site SEC 19-24S-33E (BellLake)
<b>Project:</b>	Lea Co, New Mexico (NAD-83)	<b>TVD Reference:</b>	Rig KB @ 3579.0usft (Cactus 129)
<b>Site:</b>	SEC 19-24S-33E (BellLake)	<b>MD Reference:</b>	Rig KB @ 3579.0usft (Cactus 129)
<b>Well:</b>	Bell Lake 19-18 State Com 34H	<b>North Reference:</b>	Grid
<b>Wellbore:</b>	Lateral #1	<b>Survey Calculation Method:</b>	Minimum Curvature
<b>Design:</b>	As Drilled	<b>Database:</b>	Compass_DSN

Survey									
Measured Depth (usft)	Inclination (°)	Azimuth (°)	Vertical Depth (usft)	+N/-S (usft)	+E/-W (usft)	Map Northing (usft)	Map Easting (usft)	Latitude	Longitude
21,322.0	89.10	358.16	12,226.3	9,015.2	-389.5	444,959.55	762,356.01	32° 13' 16.499 N	103° 37' 7.066 W
21,418.0	89.63	358.24	12,227.4	9,111.2	-392.5	445,055.50	762,352.99	32° 13' 17.449 N	103° 37' 7.094 W
21,513.0	89.32	357.72	12,228.2	9,206.1	-395.9	445,150.43	762,349.65	32° 13' 18.388 N	103° 37' 7.125 W
21,609.0	90.02	358.07	12,228.8	9,302.0	-399.4	445,246.37	762,346.12	32° 13' 19.338 N	103° 37' 7.159 W
21,705.0	90.02	357.89	12,228.7	9,398.0	-402.8	445,342.31	762,342.74	32° 13' 20.287 N	103° 37' 7.191 W
21,800.0	91.69	357.45	12,227.3	9,492.9	-406.7	445,437.21	762,338.87	32° 13' 21.227 N	103° 37' 7.228 W
21,896.0	89.98	358.07	12,225.9	9,588.8	-410.4	445,533.13	762,335.12	32° 13' 22.176 N	103° 37' 7.265 W
21,991.0	88.62	358.77	12,227.1	9,683.8	-413.0	445,628.08	762,332.50	32° 13' 23.116 N	103° 37' 7.288 W
22,087.0	89.45	359.47	12,228.7	9,779.7	-414.5	445,724.05	762,331.03	32° 13' 24.066 N	103° 37' 7.298 W
22,182.0	88.70	358.95	12,230.2	9,874.7	-415.8	445,819.03	762,329.72	32° 13' 25.006 N	103° 37' 7.305 W
22,278.0	89.14	358.77	12,232.0	9,970.7	-417.7	445,915.00	762,327.81	32° 13' 25.955 N	103° 37' 7.320 W
22,373.0	89.80	358.60	12,232.9	10,065.6	-419.9	446,009.97	762,325.63	32° 13' 26.895 N	103° 37' 7.338 W
22,469.0	90.64	358.68	12,232.6	10,161.6	-422.2	446,105.94	762,323.35	32° 13' 27.845 N	103° 37' 7.357 W
22,564.0	91.82	359.56	12,230.5	10,256.6	-423.6	446,200.90	762,321.89	32° 13' 28.785 N	103° 37' 7.367 W
22,567.6	91.89	359.58	12,230.4	10,260.2	-423.7	446,204.50	762,321.87	32° 13' 28.820 N	103° 37' 7.367 W
<b>Cross 100' FNL/336' FWL; 22567.6' MD</b>									
22,592.0	92.35	359.74	12,229.5	10,284.6	-423.8	446,228.88	762,321.72	32° 13' 29.062 N	103° 37' 7.367 W
<b>Last Survey</b>									
22,640.0	92.35	359.74	12,227.5	10,332.5	-424.0	446,276.84	762,321.50	32° 13' 29.536 N	103° 37' 7.366 W
<b>PTB: 27' FNL, 336' FWL - PBHL - TD (B L 19-18 S C 34H) d5 - PBHL - TD (B L 19-18 S C 34H) - PBHL - TD (B L 19-18 S C 34H)a</b>									

Design Targets									
Target Name	Dip Angle (°)	Dip Dir. (°)	TVD (usft)	+N/-S (usft)	+E/-W (usft)	Northing (usft)	Easting (usft)	Latitude	Longitude
- hit/miss target									
- Shape									
PBHL - TD (B L 19-18 S	0.00	0.00	12,340.0	10,340.1	-430.1	446,284.48	762,315.41	32° 13' 29.612 N	103° 37' 7.436 W
- actual wellpath misses target center by 112.9usft at 22640.0usft MD (12227.5 TVD, 10332.5 N, -424.0 E)									
- Point									

Design Annotations					
Measured Depth (usft)	Vertical Depth (usft)	Local Coordinates			
		+N/-S (usft)	+E/-W (usft)	Comment	
1,282.0	1,282.0	152.9	982.1	First Survey	
17,384.1	12,233.8	5,079.1	-399.0	Cross Section 19 to 18; 17384' MD, 329' FWL	
22,567.6	12,230.4	10,260.2	-423.7	Cross 100' FNL/336' FWL; 22567.6' MD	
22,592.0	12,229.5	10,284.6	-423.8	Last Survey	
22,640.0	12,227.5	10,332.5	-424.0	PTB: 27' FNL, 336' FWL	

Checked By: _____	Approved By: _____	Date: _____
-------------------	--------------------	-------------

**Final MWD Survey Certification**

**County, State: Lea County, New Mexico**

**Client: Devon Energy**

**Well Name: Bell Lake 19-18 State Com #34H**

**API No: 30-025-45641**

**Start Date: 08/17/2019**

**End Date: 08/17/2019**

**Measure Start Depth: 160.00'**

**Measured End Depth: 1164.00'**

**Vertical Section from SHL to TD: 5.71° Azm**

**I, Robert D. Wafer, Directional Well Planner, hereby certify that; I am employed by Newsco International Energy Services, Inc. and we conducted or supervised the taking of these open hole MWD surveys at the request of this client. This data is true, correct, complete and within the limitations of the tool as set forth by Newsco International Energy Services, Inc. I am authorized and qualified to make this report and have reviewed this report and find that it conforms to the principals and procedures as set forth by Newsco International Energy Services, Inc.**

**Date: 07/06/2020**

**Sign: *Robert D. Wafer***



## **Devon Energy Production Company, L.P.**

**Lea Co, New Mexico (NAD-83)  
SEC 19-24S-33E (BellLake)  
Bell Lake 19-18 State Com 34H**

**Lateral #1**

**Design: As Drilled**

## **Standard Survey Report**

**26 May, 2020**



<b>Company:</b>	Devon Energy Production Company, L.P.	<b>Local Co-ordinate Reference:</b>	Site SEC 19-24S-33E (BellLake)
<b>Project:</b>	Lea Co, New Mexico (NAD-83)	<b>TVD Reference:</b>	Rig KB @ 3579.0usft (Cactus 129)
<b>Site:</b>	SEC 19-24S-33E (BellLake)	<b>MD Reference:</b>	Rig KB @ 3579.0usft (Cactus 129)
<b>Well:</b>	Bell Lake 19-18 State Com 34H	<b>North Reference:</b>	Grid
<b>Wellbore:</b>	Lateral #1	<b>Survey Calculation Method:</b>	Minimum Curvature
<b>Design:</b>	As Drilled	<b>Database:</b>	Compass_DSN

<b>Project</b>	Lea Co, New Mexico (NAD-83)		
<b>Map System:</b>	US State Plane 1983	<b>System Datum:</b>	Mean Sea Level
<b>Geo Datum:</b>	North American Datum 1983		
<b>Map Zone:</b>	New Mexico Eastern Zone		

<b>Site</b>	SEC 19-24S-33E (BellLake)		
<b>Site Position:</b>		<b>Northing:</b>	435,944.33 usft
<b>From:</b>	Map	<b>Easting:</b>	762,745.54 usft
<b>Position Uncertainty:</b>	0.0 usft	<b>Slot Radius:</b>	13-3/16 "
		<b>Latitude:</b>	32° 11' 47.265 N
		<b>Longitude:</b>	103° 37' 3.230 W

<b>Well</b>	Bell Lake 19-18 State Com 34H		
<b>Well Position</b>	<b>+N/-S</b>	144.5 usft	<b>Northing:</b> 436,088.87 usft
	<b>+E/-W</b>	981.3 usft	<b>Easting:</b> 763,726.84 usft
<b>Position Uncertainty</b>	0.0 usft	<b>Wellhead Elevation:</b>	0.0 usft
<b>Grid Convergence:</b>	0.38 °	<b>Ground Level:</b>	3,549.0 usft

<b>Wellbore</b>	Lateral #1				
<b>Magnetics</b>	<b>Model Name</b>	<b>Sample Date</b>	<b>Declination (°)</b>	<b>Dip Angle (°)</b>	<b>Field Strength (nT)</b>
	IGRF2015	11/7/2019	6.71	60.00	47,670.76628939

<b>Design</b>	As Drilled				
<b>Audit Notes:</b>					
<b>Version:</b>	1.0	<b>Phase:</b>	ACTUAL	<b>Tie On Depth:</b>	0.0
<b>Vertical Section:</b>	<b>Depth From (TVD) (usft)</b>	<b>+N/-S (usft)</b>	<b>+E/-W (usft)</b>	<b>Direction (°)</b>	
	0.0	144.5	981.3	359.67	

<b>Survey Program</b>	<b>Date</b>	5/26/2020			
<b>From (usft)</b>	<b>To (usft)</b>	<b>Survey (Wellbore)</b>	<b>Tool Name</b>	<b>Description</b>	
160.0	1,164.0	Survey #1 (Lateral #1)	GYRO-NS	Gyrocompass Gyro	
1,282.0	22,640.0	Survey #2 (Lateral #1)	MWD	MWD - Skyline	

<b>Survey</b>										
<b>Measured Depth (usft)</b>	<b>Inclination (°)</b>	<b>Azimuth (°)</b>	<b>Vertical Depth (usft)</b>	<b>+N/-S (usft)</b>	<b>+E/-W (usft)</b>	<b>Vertical Section (usft)</b>	<b>Dogleg Rate (°/100usft)</b>	<b>Build Rate (°/100usft)</b>	<b>Turn Rate (°/100usft)</b>	
0.0	0.00	0.00	0.0	144.5	981.3	0.0	0.00	0.00	0.00	
160.0	0.79	30.00	160.0	145.5	981.9	1.0	0.49	0.49	0.00	
208.0	1.01	29.30	208.0	146.2	982.2	1.6	0.46	0.46	-1.46	
302.0	0.66	359.86	302.0	147.4	982.6	2.9	0.58	-0.37	-31.32	
397.0	0.35	16.91	397.0	148.2	982.7	3.7	0.36	-0.33	17.95	
492.0	0.31	28.95	492.0	148.7	982.9	4.2	0.08	-0.04	12.67	
586.0	0.31	35.54	586.0	149.2	983.2	4.6	0.04	0.00	7.01	
680.0	0.57	338.50	680.0	149.8	983.2	5.3	0.51	0.28	-60.68	
775.0	0.62	348.78	775.0	150.8	982.9	6.2	0.12	0.05	10.82	

<b>Company:</b>	Devon Energy Production Company, L.P.	<b>Local Co-ordinate Reference:</b>	Site SEC 19-24S-33E (BellLake)
<b>Project:</b>	Lea Co, New Mexico (NAD-83)	<b>TVD Reference:</b>	Rig KB @ 3579.0usft (Cactus 129)
<b>Site:</b>	SEC 19-24S-33E (BellLake)	<b>MD Reference:</b>	Rig KB @ 3579.0usft (Cactus 129)
<b>Well:</b>	Bell Lake 19-18 State Com 34H	<b>North Reference:</b>	Grid
<b>Wellbore:</b>	Lateral #1	<b>Survey Calculation Method:</b>	Minimum Curvature
<b>Design:</b>	As Drilled	<b>Database:</b>	Compass_DSN

Survey									
Measured Depth (usft)	Inclination (°)	Azimuth (°)	Vertical Depth (usft)	+N/-S (usft)	+E/-W (usft)	Vertical Section (usft)	Dogleg Rate (°/100usft)	Build Rate (°/100usft)	Turn Rate (°/100usft)
869.0	0.57	327.16	869.0	151.6	982.5	7.1	0.24	-0.05	-23.00
964.0	0.26	7.68	964.0	152.3	982.3	7.7	0.43	-0.33	42.65
1,058.0	0.09	28.77	1,058.0	152.5	982.4	8.0	0.19	-0.18	22.44
1,164.0	0.44	316.09	1,164.0	152.9	982.1	8.4	0.40	0.33	-68.57
1,282.0	0.40	134.80	1,282.0	152.9	982.1	8.4	0.71	-0.03	151.45
<b>First Survey</b>									
1,377.0	2.68	292.50	1,376.9	153.6	980.3	9.0	3.21	2.40	166.00
1,472.0	3.12	281.78	1,471.8	154.9	975.7	10.4	0.73	0.46	-11.28
1,566.0	2.90	289.43	1,565.7	156.2	971.0	11.8	0.49	-0.23	8.14
1,661.0	3.08	285.73	1,660.5	157.7	966.2	13.3	0.28	0.19	-3.89
1,755.0	2.95	291.71	1,754.4	159.3	961.6	14.9	0.36	-0.14	6.36
1,850.0	3.03	289.87	1,849.3	161.1	956.9	16.7	0.13	0.08	-1.94
1,944.0	3.82	281.16	1,943.1	162.5	951.5	18.2	1.00	0.84	-9.27
2,038.0	5.36	260.33	2,036.8	162.4	944.1	18.1	2.39	1.64	-22.16
2,133.0	6.33	250.93	2,131.3	159.9	934.8	15.7	1.43	1.02	-9.89
2,227.0	6.77	256.99	2,224.7	157.0	924.5	12.8	0.87	0.47	6.45
2,322.0	7.91	260.25	2,318.9	154.6	912.6	10.5	1.28	1.20	3.43
2,416.0	9.76	262.27	2,411.8	152.5	898.3	8.4	2.00	1.97	2.15
2,511.0	10.07	264.11	2,505.4	150.5	882.1	6.6	0.47	0.33	1.94
2,606.0	9.89	264.82	2,599.0	148.9	865.7	5.1	0.23	-0.19	0.75
2,700.0	9.58	264.55	2,691.6	147.5	849.9	3.7	0.33	-0.33	-0.29
2,796.0	10.46	260.16	2,786.1	145.2	833.3	1.5	1.21	0.92	-4.57
2,891.0	10.51	259.72	2,879.6	142.2	816.3	-1.4	0.10	0.05	-0.46
2,985.0	10.20	259.63	2,972.0	139.2	799.7	-4.3	0.33	-0.33	-0.10
3,081.0	9.76	259.89	3,066.6	136.2	783.3	-7.2	0.46	-0.46	0.27
3,176.0	9.36	259.46	3,160.3	133.4	767.8	-9.9	0.43	-0.42	-0.45
3,272.0	9.01	261.21	3,255.0	130.8	752.7	-12.4	0.47	-0.36	1.82
3,367.0	9.80	257.87	3,348.7	128.0	737.4	-15.2	1.01	0.83	-3.52
3,463.0	9.93	257.35	3,443.3	124.4	721.4	-18.6	0.16	0.14	-0.54
3,559.0	9.27	257.35	3,538.0	120.9	705.8	-22.0	0.69	-0.69	0.00
3,654.0	8.40	255.50	3,631.9	117.5	691.6	-25.3	0.96	-0.92	-1.95
3,749.0	9.10	259.28	3,725.7	114.4	677.5	-28.4	0.95	0.74	3.98
3,845.0	8.97	262.18	3,820.6	112.0	662.6	-30.7	0.49	-0.14	3.02
3,940.0	8.48	261.65	3,914.5	109.9	648.3	-32.7	0.52	-0.52	-0.56
4,036.0	8.35	253.57	4,009.4	106.9	634.6	-35.6	1.24	-0.14	-8.42
4,132.0	8.26	257.70	4,104.4	103.5	621.2	-39.0	0.63	-0.09	4.30
4,227.0	7.74	258.58	4,198.5	100.8	608.3	-41.6	0.56	-0.55	0.93
4,323.0	8.09	259.19	4,293.6	98.2	595.3	-44.1	0.37	0.36	0.64
4,418.0	9.01	260.07	4,387.5	95.7	581.4	-46.5	0.98	0.97	0.93
4,514.0	10.11	257.43	4,482.2	92.6	565.8	-49.6	1.23	1.15	-2.75
4,610.0	9.58	251.72	4,576.8	88.2	550.0	-53.8	1.16	-0.55	-5.95
4,705.0	8.79	253.57	4,670.6	83.7	535.5	-58.3	0.89	-0.83	1.95
4,801.0	10.11	265.61	4,765.3	81.0	520.1	-60.9	2.47	1.38	12.54

<b>Company:</b>	Devon Energy Production Company, L.P.	<b>Local Co-ordinate Reference:</b>	Site SEC 19-24S-33E (BellLake)
<b>Project:</b>	Lea Co, New Mexico (NAD-83)	<b>TVD Reference:</b>	Rig KB @ 3579.0usft (Cactus 129)
<b>Site:</b>	SEC 19-24S-33E (BellLake)	<b>MD Reference:</b>	Rig KB @ 3579.0usft (Cactus 129)
<b>Well:</b>	Bell Lake 19-18 State Com 34H	<b>North Reference:</b>	Grid
<b>Wellbore:</b>	Lateral #1	<b>Survey Calculation Method:</b>	Minimum Curvature
<b>Design:</b>	As Drilled	<b>Database:</b>	Compass_DSN

Survey										
Measured Depth (usft)	Inclination (°)	Azimuth (°)	Vertical Depth (usft)	+N/-S (usft)	+E/-W (usft)	Vertical Section (usft)	Dogleg Rate (°/100usft)	Build Rate (°/100usft)	Turn Rate (°/100usft)	
4,896.0	10.55	260.95	4,858.7	79.0	503.2	-62.8	0.99	0.46	-4.91	
4,992.0	11.82	258.58	4,952.9	75.6	484.8	-66.0	1.41	1.32	-2.47	
5,087.0	10.90	257.79	5,046.0	71.8	466.5	-69.8	0.98	-0.97	-0.83	
5,183.0	11.08	256.47	5,140.3	67.7	448.7	-73.7	0.32	0.19	-1.38	
5,279.0	10.90	256.03	5,234.5	63.4	430.9	-78.0	0.21	-0.19	-0.46	
5,374.0	10.55	254.97	5,327.9	59.0	413.8	-82.3	0.42	-0.37	-1.12	
5,470.0	11.43	260.07	5,422.1	55.0	395.9	-86.1	1.37	0.92	5.31	
5,565.0	11.56	262.71	5,515.2	52.2	377.2	-88.9	0.57	0.14	2.78	
5,661.0	11.16	260.77	5,609.3	49.5	358.5	-91.5	0.58	-0.42	-2.02	
5,756.0	10.99	261.56	5,702.5	46.7	340.5	-94.2	0.24	-0.18	0.83	
5,852.0	10.81	261.04	5,796.8	43.9	322.5	-96.8	0.21	-0.19	-0.54	
5,947.0	9.85	259.98	5,890.3	41.1	305.7	-99.5	1.03	-1.01	-1.12	
6,043.0	9.41	260.69	5,984.9	38.4	289.9	-102.1	0.47	-0.46	0.74	
6,138.0	8.97	259.54	6,078.7	35.8	275.0	-104.6	0.50	-0.46	-1.21	
6,233.0	8.31	265.08	6,172.6	33.9	260.8	-106.5	1.12	-0.69	5.83	
6,329.0	10.24	265.08	6,267.4	32.6	245.4	-107.7	2.01	2.01	0.00	
6,423.0	11.34	260.86	6,359.7	30.4	228.0	-109.8	1.44	1.17	-4.49	
6,518.0	11.96	259.10	6,452.7	27.1	209.1	-113.0	0.75	0.65	-1.85	
6,613.0	11.56	258.14	6,545.7	23.2	190.1	-116.7	0.47	-0.42	-1.01	
6,707.0	10.86	257.70	6,638.0	19.4	172.2	-120.5	0.75	-0.74	-0.47	
6,802.0	10.07	258.49	6,731.4	15.8	155.4	-123.9	0.85	-0.83	0.83	
6,896.0	9.54	258.75	6,824.0	12.7	139.7	-127.0	0.57	-0.56	0.28	
6,991.0	8.84	258.14	6,917.8	9.7	124.8	-130.0	0.74	-0.74	-0.64	
7,086.0	8.79	256.12	7,011.7	6.4	110.6	-133.1	0.33	-0.05	-2.13	
7,180.0	8.48	256.64	7,104.6	3.1	96.9	-136.4	0.34	-0.33	0.55	
7,274.0	8.35	255.06	7,197.6	-0.3	83.6	-139.6	0.28	-0.14	-1.68	
7,369.0	8.09	256.55	7,291.6	-3.6	70.4	-142.9	0.35	-0.27	1.57	
7,464.0	7.87	259.72	7,385.7	-6.3	57.5	-145.5	0.52	-0.23	3.34	
7,558.0	7.56	259.10	7,478.8	-8.6	45.1	-147.8	0.34	-0.33	-0.66	
7,653.0	8.79	260.60	7,572.9	-11.0	31.8	-150.1	1.31	1.29	1.58	
7,747.0	10.73	259.19	7,665.5	-13.8	16.1	-152.8	2.08	2.06	-1.50	
7,842.0	10.33	260.60	7,758.9	-16.9	-1.0	-155.8	0.50	-0.42	1.48	
7,937.0	9.80	260.25	7,852.4	-19.6	-17.4	-158.4	0.56	-0.56	-0.37	
8,032.0	10.73	257.43	7,945.9	-22.9	-34.0	-161.6	1.11	0.98	-2.97	
8,128.0	10.55	257.87	8,040.3	-26.7	-51.3	-165.3	0.21	-0.19	0.46	
8,224.0	9.49	257.08	8,134.8	-30.3	-67.6	-168.8	1.11	-1.10	-0.82	
8,319.0	8.84	255.41	8,228.6	-33.9	-82.3	-172.3	0.74	-0.68	-1.76	
8,414.0	9.63	260.16	8,322.4	-37.1	-97.2	-175.4	1.15	0.83	5.00	
8,510.0	9.23	259.63	8,417.1	-39.9	-112.7	-178.1	0.43	-0.42	-0.55	
8,606.0	9.58	263.76	8,511.8	-42.1	-128.2	-180.3	0.79	0.36	4.30	
8,701.0	8.97	263.50	8,605.5	-43.8	-143.4	-181.9	0.64	-0.64	-0.27	
8,797.0	9.58	261.74	8,700.3	-45.8	-158.7	-183.8	0.70	0.64	-1.83	
8,892.0	8.92	260.86	8,794.0	-48.1	-173.8	-186.0	0.71	-0.69	-0.93	
8,988.0	8.22	260.86	8,889.0	-50.4	-188.0	-188.2	0.73	-0.73	0.00	



<b>Company:</b>	Devon Energy Production Company, L.P.	<b>Local Co-ordinate Reference:</b>	Site SEC 19-24S-33E (BellLake)
<b>Project:</b>	Lea Co, New Mexico (NAD-83)	<b>TVD Reference:</b>	Rig KB @ 3579.0usft (Cactus 129)
<b>Site:</b>	SEC 19-24S-33E (BellLake)	<b>MD Reference:</b>	Rig KB @ 3579.0usft (Cactus 129)
<b>Well:</b>	Bell Lake 19-18 State Com 34H	<b>North Reference:</b>	Grid
<b>Wellbore:</b>	Lateral #1	<b>Survey Calculation Method:</b>	Minimum Curvature
<b>Design:</b>	As Drilled	<b>Database:</b>	Compass_DSN

Survey									
Measured Depth (usft)	Inclination (°)	Azimuth (°)	Vertical Depth (usft)	+N/-S (usft)	+E/-W (usft)	Vertical Section (usft)	Dogleg Rate (°/100usft)	Build Rate (°/100usft)	Turn Rate (°/100usft)
9,083.0	7.43	258.05	8,983.1	-52.8	-200.7	-190.5	0.92	-0.83	-2.96
9,179.0	6.77	259.89	9,078.3	-55.0	-212.3	-192.7	0.73	-0.69	1.92
9,274.0	5.49	260.86	9,172.8	-56.7	-222.3	-194.3	1.35	-1.35	1.02
9,370.0	5.67	254.36	9,268.3	-58.7	-231.4	-196.3	0.68	0.19	-6.77
9,466.0	6.24	260.77	9,363.8	-60.9	-241.1	-198.4	0.91	0.59	6.68
9,561.0	5.71	259.89	9,458.3	-62.5	-250.9	-200.0	0.57	-0.56	-0.93
9,657.0	4.92	256.64	9,553.9	-64.3	-259.6	-201.7	0.88	-0.82	-3.39
9,752.0	5.67	261.12	9,648.5	-66.0	-268.2	-203.3	0.90	0.79	4.72
9,848.0	8.70	262.44	9,743.7	-67.7	-280.1	-204.9	3.16	3.16	1.38
9,943.0	9.05	256.64	9,837.6	-70.3	-294.5	-207.5	1.01	0.37	-6.11
10,039.0	8.97	260.42	9,932.4	-73.3	-309.2	-210.4	0.62	-0.08	3.94
10,135.0	8.75	256.38	10,027.3	-76.3	-323.7	-213.3	0.69	-0.23	-4.21
10,230.0	8.00	251.37	10,121.3	-80.1	-337.0	-217.0	1.10	-0.79	-5.27
10,326.0	6.55	235.37	10,216.5	-85.3	-347.8	-222.2	2.58	-1.51	-16.67
10,421.0	6.07	234.85	10,310.9	-91.3	-356.4	-228.2	0.51	-0.51	-0.55
10,516.0	5.05	241.00	10,405.5	-96.2	-364.1	-233.0	1.24	-1.07	6.47
10,612.0	3.43	237.92	10,501.2	-99.8	-370.2	-236.6	1.70	-1.69	-3.21
10,708.0	3.03	234.76	10,597.0	-102.8	-374.8	-239.5	0.46	-0.42	-3.29
10,803.0	2.46	244.34	10,691.9	-105.1	-378.6	-241.8	0.77	-0.60	10.08
10,899.0	2.55	247.59	10,787.8	-106.8	-382.5	-243.5	0.18	0.09	3.39
10,994.0	2.07	241.09	10,882.8	-108.5	-385.9	-245.1	0.57	-0.51	-6.84
11,090.0	1.14	240.21	10,978.7	-109.8	-388.3	-246.4	0.97	-0.97	-0.92
11,185.0	1.58	243.28	11,073.7	-110.8	-390.3	-247.5	0.47	0.46	3.23
11,280.0	1.85	248.38	11,168.7	-112.0	-392.9	-248.6	0.33	0.28	5.37
11,376.0	1.71	234.93	11,264.6	-113.4	-395.5	-250.0	0.46	-0.15	-14.01
11,472.0	1.63	234.58	11,360.6	-115.0	-397.8	-251.6	0.08	-0.08	-0.36
11,568.0	1.45	259.37	11,456.5	-116.0	-400.1	-252.6	0.71	-0.19	25.82
11,663.0	1.80	266.31	11,551.5	-116.3	-402.7	-252.9	0.42	0.37	7.31
11,759.0	1.01	291.01	11,647.5	-116.1	-405.0	-252.7	1.02	-0.82	25.73
11,797.0	0.92	297.42	11,685.5	-115.9	-405.6	-252.4	0.37	-0.24	16.87
11,863.0	1.14	289.87	11,751.5	-115.4	-406.7	-251.9	0.39	0.33	-11.44
11,958.0	4.84	19.34	11,846.3	-111.3	-406.3	-247.8	5.22	3.89	94.18
12,053.0	15.96	357.54	11,939.7	-94.4	-405.5	-231.0	12.21	11.71	-22.95
12,149.0	29.89	352.09	12,027.9	-57.3	-409.4	-193.9	14.66	14.51	-5.68
12,244.0	41.98	357.10	12,104.7	-2.0	-414.3	-138.5	13.09	12.73	5.27
12,292.0	48.40	358.68	12,138.5	32.1	-415.5	-104.4	13.58	13.38	3.29
12,340.0	55.38	1.14	12,168.1	69.8	-415.5	-66.7	15.09	14.54	5.13
12,398.0	59.30	5.36	12,199.4	118.5	-412.7	-18.0	9.12	6.76	7.28
12,435.0	64.84	5.80	12,216.7	151.0	-409.5	14.5	15.01	14.97	1.19
12,482.0	68.00	6.07	12,235.5	193.9	-405.1	57.3	6.74	6.72	0.57
12,531.0	69.71	6.77	12,253.2	239.3	-399.9	102.7	3.74	3.49	1.43
12,579.0	72.09	5.36	12,268.9	284.4	-395.2	147.8	5.68	4.96	-2.94
12,626.0	74.07	3.25	12,282.6	329.2	-391.8	192.6	6.02	4.21	-4.49

<b>Company:</b>	Devon Energy Production Company, L.P.	<b>Local Co-ordinate Reference:</b>	Site SEC 19-24S-33E (BellLake)
<b>Project:</b>	Lea Co, New Mexico (NAD-83)	<b>TVD Reference:</b>	Rig KB @ 3579.0usft (Cactus 129)
<b>Site:</b>	SEC 19-24S-33E (BellLake)	<b>MD Reference:</b>	Rig KB @ 3579.0usft (Cactus 129)
<b>Well:</b>	Bell Lake 19-18 State Com 34H	<b>North Reference:</b>	Grid
<b>Wellbore:</b>	Lateral #1	<b>Survey Calculation Method:</b>	Minimum Curvature
<b>Design:</b>	As Drilled	<b>Database:</b>	Compass_DSN

Survey										
Measured Depth (usft)	Inclination (°)	Azimuth (°)	Vertical Depth (usft)	+N/-S (usft)	+E/-W (usft)	Vertical Section (usft)	Dogleg Rate (°/100usft)	Build Rate (°/100usft)	Turn Rate (°/100usft)	
12,721.0	82.51	5.01	12,301.8	421.9	-385.1	285.2	9.07	8.88	1.85	
12,817.0	87.21	4.75	12,310.4	517.2	-376.9	380.4	4.90	4.90	-0.27	
12,912.0	90.07	2.02	12,312.7	611.9	-371.3	475.2	4.16	3.01	-2.87	
13,007.0	90.02	1.67	12,312.6	706.9	-368.3	570.1	0.37	-0.05	-0.37	
13,103.0	89.80	0.53	12,312.8	802.9	-366.4	666.1	1.21	-0.23	-1.19	
13,199.0	87.30	359.74	12,315.2	898.8	-366.2	762.0	2.73	-2.60	-0.82	
13,294.0	86.11	359.65	12,320.6	993.7	-366.7	856.9	1.26	-1.25	-0.09	
13,390.0	88.35	359.39	12,325.3	1,089.6	-367.5	952.8	2.35	2.33	-0.27	
13,485.0	93.32	0.71	12,323.9	1,184.5	-367.4	1,047.7	5.41	5.23	1.39	
13,581.0	90.46	1.23	12,320.7	1,280.4	-365.8	1,143.6	3.03	-2.98	0.54	
13,676.0	91.16	1.58	12,319.4	1,375.4	-363.5	1,238.6	0.82	0.74	0.37	
13,772.0	91.34	1.50	12,317.3	1,471.3	-360.9	1,334.5	0.21	0.19	-0.08	
13,868.0	93.14	1.76	12,313.5	1,567.2	-358.2	1,430.4	1.89	1.88	0.27	
13,963.0	90.81	1.23	12,310.3	1,662.1	-355.7	1,525.3	2.52	-2.45	-0.56	
14,059.0	88.26	357.28	12,311.1	1,758.1	-356.9	1,621.2	4.90	-2.66	-4.11	
14,154.0	87.96	357.63	12,314.2	1,852.9	-361.2	1,716.1	0.49	-0.32	0.37	
14,250.0	87.21	356.57	12,318.2	1,948.7	-366.0	1,811.9	1.35	-0.78	-1.10	
14,345.0	89.89	356.31	12,320.6	2,043.5	-371.9	1,906.7	2.83	2.82	-0.27	
14,441.0	90.29	357.28	12,320.5	2,139.4	-377.3	2,002.6	1.09	0.42	1.01	
14,537.0	91.08	356.75	12,319.3	2,235.2	-382.3	2,098.5	0.99	0.82	-0.55	
14,632.0	91.56	357.10	12,317.1	2,330.1	-387.4	2,193.4	0.63	0.51	0.37	
14,728.0	93.10	357.28	12,313.2	2,425.9	-392.1	2,289.2	1.62	1.60	0.19	
14,823.0	93.23	359.83	12,308.0	2,520.7	-394.5	2,384.0	2.68	0.14	2.68	
14,919.0	89.67	1.14	12,305.6	2,616.6	-393.7	2,480.0	3.95	-3.71	1.36	
15,014.0	88.31	0.88	12,307.2	2,711.6	-392.0	2,574.9	1.46	-1.43	-0.27	
15,110.0	91.30	0.27	12,307.6	2,807.6	-391.0	2,670.9	3.18	3.11	-0.64	
15,205.0	93.32	0.88	12,303.7	2,902.5	-390.1	2,765.8	2.22	2.13	0.64	
15,301.0	94.64	1.32	12,297.1	2,998.2	-388.2	2,861.5	1.45	1.38	0.46	
15,397.0	95.21	1.50	12,288.8	3,093.9	-385.9	2,957.1	0.62	0.59	0.19	
15,492.0	92.00	0.27	12,282.9	3,188.6	-384.4	3,051.9	3.62	-3.38	-1.29	
15,588.0	92.22	0.27	12,279.3	3,284.6	-384.0	3,147.8	0.23	0.23	0.00	
15,684.0	91.69	359.74	12,276.1	3,380.5	-384.0	3,243.8	0.78	-0.55	-0.55	
15,779.0	92.00	359.91	12,273.0	3,475.5	-384.2	3,338.7	0.37	0.33	0.18	
15,874.0	92.26	0.44	12,269.5	3,570.4	-384.0	3,433.7	0.62	0.27	0.56	
15,970.0	92.75	0.53	12,265.3	3,666.3	-383.1	3,529.6	0.52	0.51	0.09	
16,065.0	91.16	0.97	12,262.0	3,761.2	-381.9	3,624.5	1.74	-1.67	0.46	
16,161.0	90.99	1.85	12,260.2	3,857.2	-379.5	3,720.4	0.93	-0.18	0.92	
16,256.0	90.99	1.76	12,258.6	3,952.1	-376.5	3,815.4	0.09	0.00	-0.09	
16,352.0	90.86	1.85	12,257.0	4,048.1	-373.5	3,911.3	0.16	-0.14	0.09	
16,447.0	91.16	0.18	12,255.4	4,143.0	-371.8	4,006.2	1.79	0.32	-1.76	
16,543.0	90.81	1.41	12,253.7	4,239.0	-370.5	4,102.2	1.33	-0.36	1.28	
16,638.0	90.02	358.95	12,253.0	4,334.0	-370.2	4,197.2	2.72	-0.83	-2.59	
16,734.0	91.08	357.10	12,252.1	4,429.9	-373.5	4,293.1	2.22	1.10	-1.93	

<b>Company:</b>	Devon Energy Production Company, L.P.	<b>Local Co-ordinate Reference:</b>	Site SEC 19-24S-33E (BellLake)
<b>Project:</b>	Lea Co, New Mexico (NAD-83)	<b>TVD Reference:</b>	Rig KB @ 3579.0usft (Cactus 129)
<b>Site:</b>	SEC 19-24S-33E (BellLake)	<b>MD Reference:</b>	Rig KB @ 3579.0usft (Cactus 129)
<b>Well:</b>	Bell Lake 19-18 State Com 34H	<b>North Reference:</b>	Grid
<b>Wellbore:</b>	Lateral #1	<b>Survey Calculation Method:</b>	Minimum Curvature
<b>Design:</b>	As Drilled	<b>Database:</b>	Compass_DSN

Survey									
Measured Depth (usft)	Inclination (°)	Azimuth (°)	Vertical Depth (usft)	+N/-S (usft)	+E/-W (usft)	Vertical Section (usft)	Dogleg Rate (°/100usft)	Build Rate (°/100usft)	Turn Rate (°/100usft)
16,829.0	92.26	357.28	12,249.3	4,524.8	-378.2	4,388.0	1.26	1.24	0.19
16,925.0	93.05	357.01	12,244.9	4,620.6	-382.9	4,483.8	0.87	0.82	-0.28
17,021.0	93.49	357.63	12,239.4	4,716.3	-387.4	4,579.6	0.79	0.46	0.65
17,116.0	92.13	358.07	12,234.8	4,811.1	-391.0	4,674.4	1.50	-1.43	0.46
17,212.0	89.93	358.33	12,233.0	4,907.0	-394.0	4,770.3	2.31	-2.29	0.27
17,308.0	89.71	358.60	12,233.3	5,003.0	-396.6	4,866.3	0.36	-0.23	0.28
17,384.1	89.57	357.75	12,233.8	5,079.1	-399.0	4,942.4	1.13	-0.18	-1.12
<b>Cross Section 19 to 18; 17384' MD, 329' FWL</b>									
17,403.0	89.54	357.54	12,234.0	5,098.0	-399.8	4,961.3	1.13	-0.18	-1.12
17,499.0	90.29	358.07	12,234.1	5,193.9	-403.4	5,057.2	0.96	0.78	0.55
17,594.0	90.81	358.33	12,233.2	5,288.8	-406.4	5,152.2	0.61	0.55	0.27
17,690.0	91.21	358.16	12,231.5	5,384.8	-409.4	5,248.2	0.45	0.42	-0.18
17,785.0	91.47	358.51	12,229.3	5,479.7	-412.1	5,343.1	0.46	0.27	0.37
17,881.0	92.00	359.04	12,226.4	5,575.6	-414.2	5,439.0	0.78	0.55	0.55
17,977.0	90.73	0.44	12,224.1	5,671.6	-414.6	5,535.0	1.97	-1.32	1.46
18,072.0	90.55	0.79	12,223.0	5,766.6	-413.6	5,630.0	0.41	-0.19	0.37
18,168.0	89.19	0.44	12,223.2	5,862.6	-412.6	5,726.0	1.46	-1.42	-0.36
18,263.0	88.48	0.09	12,225.2	5,957.6	-412.1	5,821.0	0.83	-0.75	-0.37
18,359.0	87.43	359.21	12,228.6	6,053.5	-412.7	5,916.9	1.43	-1.09	-0.92
18,455.0	89.27	359.21	12,231.4	6,149.4	-414.0	6,012.8	1.92	1.92	0.00
18,550.0	89.58	359.21	12,232.3	6,244.4	-415.3	6,107.8	0.33	0.33	0.00
18,646.0	89.89	359.74	12,232.8	6,340.4	-416.2	6,203.8	0.64	0.32	0.55
18,742.0	89.93	359.74	12,232.9	6,436.4	-416.7	6,299.8	0.04	0.04	0.00
18,837.0	90.29	359.83	12,232.7	6,531.4	-417.0	6,394.8	0.39	0.38	0.09
18,933.0	90.42	0.53	12,232.1	6,627.4	-416.7	6,490.8	0.74	0.14	0.73
19,029.0	89.71	0.53	12,232.0	6,723.4	-415.8	6,586.8	0.74	-0.74	0.00
19,124.0	89.89	0.35	12,232.3	6,818.4	-415.1	6,681.8	0.27	0.19	-0.19
19,220.0	89.10	359.39	12,233.2	6,914.4	-415.3	6,777.8	1.30	-0.82	-1.00
19,315.0	89.63	0.09	12,234.2	7,009.4	-415.7	6,872.8	0.92	0.56	0.74
19,411.0	90.51	1.14	12,234.1	7,105.4	-414.7	6,968.8	1.43	0.92	1.09
19,506.0	90.64	1.58	12,233.2	7,200.4	-412.5	7,063.7	0.48	0.14	0.46
19,602.0	91.47	1.58	12,231.4	7,296.3	-409.8	7,159.7	0.86	0.86	0.00
19,698.0	92.18	1.85	12,228.4	7,392.2	-406.9	7,255.5	0.79	0.74	0.28
19,793.0	91.38	2.02	12,225.4	7,487.1	-403.7	7,350.4	0.86	-0.84	0.18
19,889.0	89.19	2.29	12,224.9	7,583.0	-400.1	7,446.3	2.30	-2.28	0.28
19,984.0	90.11	2.90	12,225.5	7,677.9	-395.8	7,541.2	1.16	0.97	0.64
20,079.0	88.57	1.67	12,226.6	7,772.8	-392.0	7,636.1	2.07	-1.62	-1.29
20,175.0	88.18	0.44	12,229.3	7,868.8	-390.3	7,732.0	1.34	-0.41	-1.28
20,271.0	90.81	0.70	12,230.2	7,964.8	-389.3	7,828.0	2.75	2.74	0.27
20,366.0	92.00	1.06	12,227.8	8,059.7	-387.9	7,922.9	1.31	1.25	0.38
20,462.0	92.00	0.79	12,224.5	8,155.7	-386.3	8,018.9	0.28	0.00	-0.28
20,557.0	92.48	1.76	12,220.8	8,250.6	-384.2	8,113.8	1.14	0.51	1.02
20,653.0	91.21	0.79	12,217.7	8,346.5	-382.1	8,209.7	1.66	-1.32	-1.01
20,748.0	89.85	0.62	12,216.8	8,441.5	-380.9	8,304.6	1.44	-1.43	-0.18

<b>Company:</b>	Devon Energy Production Company, L.P.	<b>Local Co-ordinate Reference:</b>	Site SEC 19-24S-33E (BellLake)
<b>Project:</b>	Lea Co, New Mexico (NAD-83)	<b>TVD Reference:</b>	Rig KB @ 3579.0usft (Cactus 129)
<b>Site:</b>	SEC 19-24S-33E (BellLake)	<b>MD Reference:</b>	Rig KB @ 3579.0usft (Cactus 129)
<b>Well:</b>	Bell Lake 19-18 State Com 34H	<b>North Reference:</b>	Grid
<b>Wellbore:</b>	Lateral #1	<b>Survey Calculation Method:</b>	Minimum Curvature
<b>Design:</b>	As Drilled	<b>Database:</b>	Compass_DSN

Survey										
Measured Depth (usft)	Inclination (°)	Azimuth (°)	Vertical Depth (usft)	+N/-S (usft)	+E/-W (usft)	Vertical Section (usft)	Dogleg Rate (°/100usft)	Build Rate (°/100usft)	Turn Rate (°/100usft)	
20,844.0	89.58	0.44	12,217.3	8,537.5	-380.0	8,400.6	0.34	-0.28	-0.19	
20,939.0	88.88	0.27	12,218.6	8,632.5	-379.4	8,495.6	0.76	-0.74	-0.18	
21,035.0	89.32	358.60	12,220.1	8,728.4	-380.4	8,591.6	1.80	0.46	-1.74	
21,131.0	88.53	357.89	12,221.9	8,824.4	-383.3	8,687.5	1.11	-0.82	-0.74	
21,226.0	88.53	358.24	12,224.3	8,919.3	-386.5	8,782.5	0.37	0.00	0.37	
21,322.0	89.10	358.16	12,226.3	9,015.2	-389.5	8,878.4	0.60	0.59	-0.08	
21,418.0	89.63	358.24	12,227.4	9,111.2	-392.5	8,974.4	0.56	0.55	0.08	
21,513.0	89.32	357.72	12,228.2	9,206.1	-395.9	9,069.3	0.64	-0.33	-0.55	
21,609.0	90.02	358.07	12,228.8	9,302.0	-399.4	9,165.3	0.82	0.73	0.36	
21,705.0	90.02	357.89	12,228.7	9,398.0	-402.8	9,261.3	0.19	0.00	-0.19	
21,800.0	91.69	357.45	12,227.3	9,492.9	-406.7	9,356.2	1.82	1.76	-0.46	
21,896.0	89.98	358.07	12,225.9	9,588.8	-410.4	9,452.1	1.89	-1.78	0.65	
21,991.0	88.62	358.77	12,227.1	9,683.8	-413.0	9,547.1	1.61	-1.43	0.74	
22,087.0	89.45	359.47	12,228.7	9,779.7	-414.5	9,643.1	1.13	0.86	0.73	
22,182.0	88.70	358.95	12,230.2	9,874.7	-415.8	9,738.0	0.96	-0.79	-0.55	
22,278.0	89.14	358.77	12,232.0	9,970.7	-417.7	9,834.0	0.50	0.46	-0.19	
22,373.0	89.80	358.60	12,232.9	10,065.6	-419.9	9,929.0	0.72	0.69	-0.18	
22,469.0	90.64	358.68	12,232.6	10,161.6	-422.2	10,025.0	0.88	0.88	0.08	
22,564.0	91.82	359.56	12,230.5	10,256.6	-423.6	10,120.0	1.55	1.24	0.93	
22,567.6	91.89	359.58	12,230.4	10,260.2	-423.7	10,123.6	2.00	1.89	0.64	
Cross 100' FNL/336' FWL; 22567.6' MD										
22,592.0	92.35	359.74	12,229.5	10,284.6	-423.8	10,147.9	2.00	1.89	0.64	
Last Survey										
22,640.0	92.35	359.74	12,227.5	10,332.5	-424.0	10,195.9	0.00	0.00	0.00	
PTB: 27' FNL, 336' FWL - PBHL - TD (B L 19-18 S C 34H) d5 - PBHL - TD (B L 19-18 S C 34H) - PBHL - TD (B L 19-18 S C 34H)a										

Design Targets										
Target Name	Dip Angle (°)	Dip Dir. (°)	TVD (usft)	+N/-S (usft)	+E/-W (usft)	Northing (usft)	Easting (usft)	Latitude		Longitude
- hit/miss target										
- Shape										
PBHL - TD (B L 19-18 S	0.00	0.00	12,340.0	10,340.1	-430.1	446,284.48	762,315.41	32° 13' 29.612 N		103° 37' 7.436 W
- actual wellpath misses target center by 112.9usft at 22640.0usft MD (12227.5 TVD, 10332.5 N, -424.0 E)										
- Point										



<b>Company:</b>	Devon Energy Production Company, L.P.	<b>Local Co-ordinate Reference:</b>	Site SEC 19-24S-33E (BellLake)
<b>Project:</b>	Lea Co, New Mexico (NAD-83)	<b>TVD Reference:</b>	Rig KB @ 3579.0usft (Cactus 129)
<b>Site:</b>	SEC 19-24S-33E (BellLake)	<b>MD Reference:</b>	Rig KB @ 3579.0usft (Cactus 129)
<b>Well:</b>	Bell Lake 19-18 State Com 34H	<b>North Reference:</b>	Grid
<b>Wellbore:</b>	Lateral #1	<b>Survey Calculation Method:</b>	Minimum Curvature
<b>Design:</b>	As Drilled	<b>Database:</b>	Compass_DSN

Design Annotations				
Measured Depth (usft)	Vertical Depth (usft)	Local Coordinates		Comment
		+N/-S (usft)	+E/-W (usft)	
1,282.0	1,282.0	152.9	982.1	First Survey
17,384.1	12,233.8	5,079.1	-399.0	Cross Section 19 to 18; 17384' MD, 329' FWL
22,567.6	12,230.4	10,260.2	-423.7	Cross 100' FNL/336' FWL; 22567.6' MD
22,592.0	12,229.5	10,284.6	-423.8	Last Survey
22,640.0	12,227.5	10,332.5	-424.0	PTB: 27' FNL, 336' FWL

Checked By: _____	Approved By: _____	Date: _____
-------------------	--------------------	-------------

Rec'd 8/14/2020 - NMOCD

STATE OF NEW MEXICO  
COUNTY OF LEA

I, **Seth Crawley**, certify that; I am employed by **Skyline Directional Drilling, LLC**; that I did on the day(s) of **11/7/2019 to 12/4/2019** did conduct or supervise the taking of MWD surveys from a depth of **1,282 feet to a depth of 22,640 feet**; that the data is true, correct, complete and within the limitations of the tool as set forth by **Skyline Directional Drilling, LLC**; that I am authorized and qualified to make this report; that this survey was conducted at the request of **Devon Energy Production Co.** for the **Bell Lake 19-18 State Com 34H**, with the **API # 30-025-45641** in the **Upper Wolfcamp** field of **Lea County, New Mexico**; and that I have reviewed this report and find that it conforms to the principles and procedures as set forth by **Skyline Directional Drilling, LLC**.

A handwritten signature in cursive script that reads 'Seth Crawley' is written over a horizontal line.

Seth Crawley  
Senior Well Planner