

## DISTRICT I

1625 N. FRANKLIN BL., EL PASO, NM 88540

## DISTRICT II

1201 V. GRAND AVENUE, ALBUQUERQUE, NM 88210

## DISTRICT III

1000 Rio Bravos Rd., Aztec, NM 87410

## DISTRICT IV

1220 S. ST. FRANCIS DR., SANTA FE, NM 87505

## State of New Mexico

Energy, Minerals and Natural Resources Department

OIL CONSERVATION DIVISION  
1220 SOUTH ST. FRANCIS DR.  
Santa Fe, New Mexico 87505

Form C-102

Revised JUNE 10, 2003

Submit to Appropriate District Office

State Lease - 4 Copies

Fee Lease - 3 Copies

## WELL LOCATION AND ACREAGE DEDICATION PLAT

X AMENDED REPORT

API Number 30-025-37149	Pool Code 82200	Pool Name Osudo;Morrow,South (Gas)
Property Code 34698	Property Name CATTLEMAN 4 STATE COM	Well Number 2
GRID No. 147179	Operator Name CHESAPEAKE OPERATING, INC.	Elevation 3632'

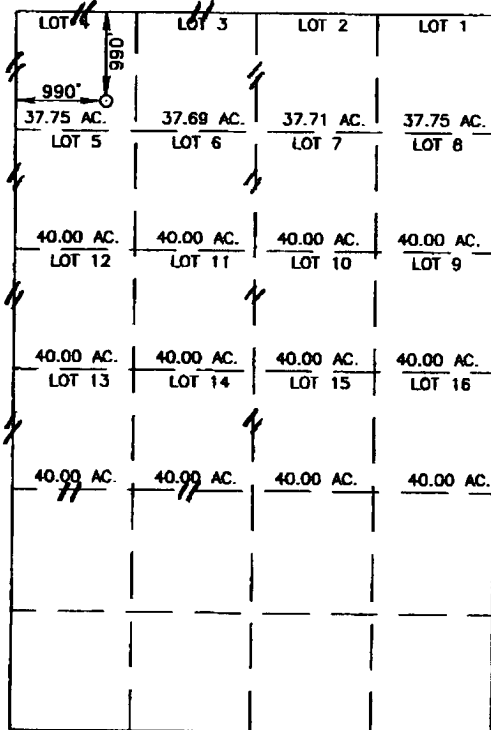
## Surface Location

UL or lot No.	Section	Township	Range	Lot Idn	Feet from the	North/South line	Feet from the	East/West line	County
4	4	21-S	35-E		990	NORTH	990	WEST	LEA

## Bottom Hole Location If Different From Surface

UL or lot No.	Section	Township	Range	Lot Idn	Feet from the	North/South line	Feet from the	East/West line	County
Dedicated Acres 320	Joint or Infill	Consolidation Code	Order No.						

NO ALLOWABLE WILL BE ASSIGNED TO THIS COMPLETION UNTIL ALL INTERESTS HAVE BEEN CONSOLIDATED  
OR A NON-STANDARD UNIT HAS BEEN APPROVED BY THE DIVISION



SCALE - 1"=2000'

GEODETIC COORDINATES  
NAD 27 NME

Y=554033.4 N  
X=794635.2 E

LAT.=32°31'10.25" N  
LONG.=103°22'38.90" W

## OPERATOR CERTIFICATION

I hereby certify the the information  
contained herein is true and complete to the  
best of my knowledge and belief.

*Brenda Coffman*  
Signature

Brenda Coffman

Printed Name  
Regulatory Analyst

Title  
May 3, 2005

Date

## SURVEYOR CERTIFICATION

I hereby certify that the well location shown  
on this plat was plotted from field notes of  
actual surveys made by me or under my  
supervision and that the same is true and  
correct to the best of my belief.

MARCH 17, 2005

Date Surveyed  
Signature of Surveyor  
Professional Seal  
LA  
12841

K2