

HOBBS OCD  
FEB 12 2013

RECEIVED

**COG PRODUCTION LLC**  
**MULTI-POINT SURFACE USE AND OPERATIONS PLAN**

**Triste Draw 5 Fed Com 2H**  
**SHL: 360' FNL & 1750' FWL**  
**BHL: 330' FSL & 2090' FWL**  
**Section 5 T24S R32E**  
**Lea County, New Mexico**

This plan is submitted with Form 3160-3, Application for Permit to Drill, covering the above described well. The purpose of this plan is to describe the location of the proposed well, the proposed construction activities and operations plan, the magnitude of the surface disturbance involved and the procedures to be followed in rehabilitating the surface after completion of the operations, so that a complete appraisal can be made of the environmental effect associated with the operations.

**1. EXISTING ROADS:**

- a. The well site and elevation plat for the proposed well are reflected on the well site layout; Form C-102. The well was staked by Jeffrey E. Hudson with KSA Engineers.
- b. Exhibit 2 is a portion of a topo map showing the well and roads in the vicinity of the location. The wellsite and the access route to the location are indicated in red on Exhibit 2-A. No Right of way is necessary.
- c. Routine grading and maintenance of existing roads will be conducted as necessary to maintain their condition as long as any operations continue on this lease.

**DIRECTIONS:**

From the intersection of CR-31 and NM-128/Jal Hwy. Go northeast on CR-31 1.80 miles to an existing pipeline crossing. Location is 1370 feet southeast.

**PLANNED ACCESS ROAD:**

COG has constructed an access road of 30' coming in from the northeast side of the pad. Width of road is 14' wide, crown design, the road is crowned and ditched with a 2% slope from the tip of the crown to the edge of the driving surface. The ditches are 3 feet wide with 3:1 slopes.

**2. LOCATION OF EXISTING AND/OR PROPOSED FACILITIES:**

In the event the well is found productive, the Triste Draw 5 Fed Com 2H.

- A. tank battery would be utilized and the necessary production equipment will be installed at the well site. See Exhibit #3.
- B. All flowlines will adhere to API standards
- C. If electricity is needed, power will be obtained from Central Valley Electric. Central Valley Electric will apply for ROW for their power lines.
- D. If the well is productive, rehabilitation plans are as follows:
  1. The original topsoil from the well site will be returned to the location. The drill site will then be contoured as close as possible to the original state.

**3. LOCATION AND TYPES OF WATER SUPPLY:**

This well will be drilled using a combination of water mud systems (outlined in the Drilling Program). The water will be obtained from commercial water stations in the area and hauled to location by transport truck using the existing and proposed roads shown in Exhibit #2. On occasion, water will be obtained from a pre-existing water well, running a pump directly to the drill rig. In these cases where a poly pipeline is used to transport water for drilling purposes, the existing and proposed road shown in Exhibit "2" will be utilized.

**4. CONSTRUCTION MATERIALS:**

All Caliche utilized for the drilling pad and proposed access road will be obtained from an existing BLM approved pit or from prevailing deposits found under the location. All roads will be constructed of 6" rolled and compacted caliche. Will use BLM recommended use of extra caliche from other locations close by for roads, if available.

**5. METHODS OF HANDLING WASTE MATERIAL:**

- a. All trash, junk and other waste material will be removed from the wellsite within 30 days after finishing drilling and/or completion operations. All waste material will be contained in trash cages or trash bins to prevent scattering. When the job is completed, all contents will be removed and disposed of in an approved sanitary landfill.
- b. The supplier, including broken sacks, will pick up slats remaining after completion of well.
- c. A porto-john will be provided for the rig crews. This equipment will be properly maintained during the drilling and completion operations and will be removed when all operations are complete.
- d. Disposal of fluids to be transported by an approved disposal company.

**6. ANCILLARY FACILITIES:**

No campsite or other facilities will be constructed as a result of this well.

**7. WELLSITE LAYOUT:**

- a. Exhibit 1 shows the proposed well site layout with dimensions of the pad layout.
- b. This exhibit indicates proposed location of reserve and sump pits if utilized and living facilities.
- c. Mud pits in the active circulating system will be steel pits and a closed loop system will be utilized.

**8. PLANS FOR SURFACE RECLAMATION:**

- a. After finishing drilling and/or completion operations, if the well is found non-commercial, the caliche will be removed from the pad and transported to the original caliche pit or used for other drilling locations. The road will be reclaimed as directed by the BLM. The original top soil will again be returned to the pad and contoured, as close as possible, to the original state.

- b. The location and road will be rehabilitated as recommended by the BLM.
- c. Caliche from areas of the pad site not required for operations will be reclaimed. The original top soil will be returned to the area of the drill pad not necessary to operate the well. These unused areas of the drill pad will be contoured, as close as possible, to match the original topography.

**9. SURFACE OWNERSHIP:**

The surface is owned by the the State of New Mexico and is administered by the New Mexico State Land Office. The surface is multiple use with the primary uses of the region for the grazing of livestock and the production of oil and gas. The proposed road routes and the surface location will be restored as directed by the BLM.

**10. OTHER INFORMATION:**

- a. The area surrounding the well site is grassland. The vegetation is moderately sparse with native prairie grass and mesquite bushes. No wildlife was observed but it is likely that deer, rabbits, coyotes, and rodents traverse the area.
- b. There is no permanent or live water in the general proximity of the location.
- c. If the well is deemed commercially productive, caliche from areas of the pad site not required for operations will be reclaimed. The original top soil will be returned to the area of the drill pad not necessary to operate the well. These unused areas of the drill pad will be contoured, as close as possible, to match the original topography. Reserve pit will not be used on this location therefore no reclamation is needed.
- d. There will be no topsoil stockpiled on the location, due to the soil being used to back fill.

**11. OPERATOR'S REPRESENTATIVE:**

**A. Through A.P.D. Approval:**

Mayte Reyes, Regulatory Analyst  
COG Production LLC  
Artesia, NM 88210  
Phone (575)748-6940  
Direct Line (575)748-6945

**B. Through Drilling Operations**

Sheryl Baker, Drilling Supervisor  
COG Production LLC  
Artesia, NM 88210  
Phone (575)748-6940  
Cell (432)934-7873

COG Production LLC  
Triste Draw 5 Fed Com 2H  
Section 5-T24S-R32E

## Operator Certification

I hereby certify that I, or someone under my direct supervision, have inspected the drill site and access route proposed herein; that I am familiar with the conditions which currently exist; that I have full knowledge of state and Federal laws applicable to this operation; that the statements made in the APD package are, to the best of my knowledge, true and correct; and that the work associated with the operations proposed herein will be performed in conformity with this APD package and the terms and conditions under which it is approved. I also certify that I, or the company I represent, am responsible for the operations conducted under this application. These statements are subject to the provisions of 18 U.S.C. 1001 for the filing of false statements.

Executed this 19<sup>th</sup> day of OCTOBER, 2012.

Signed: Mayte Reyes

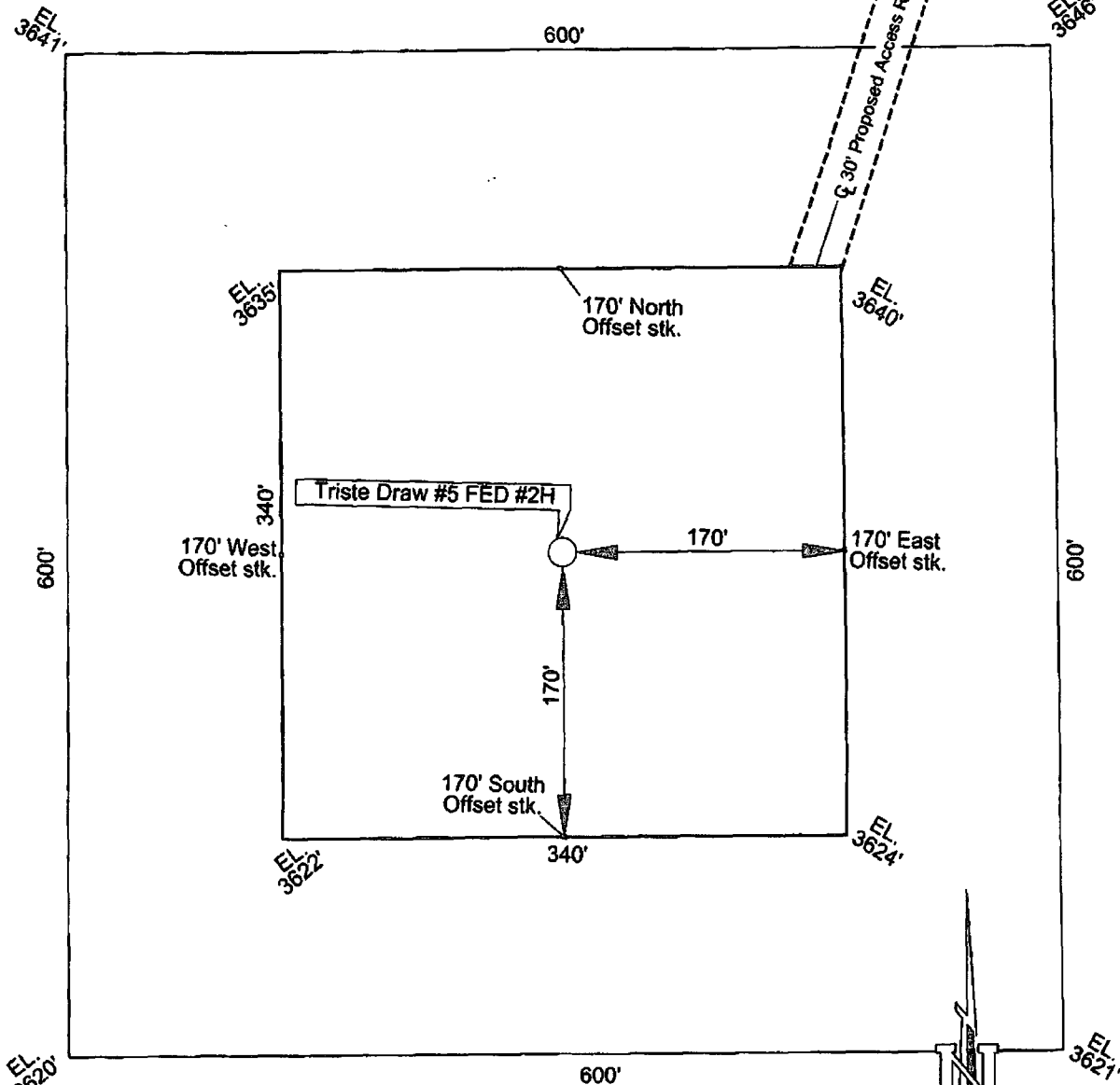
Name : Mayte Reyes

Position Title: Regulatory Analyst

Address: 2208 West Main Street, Artesia, NM 88210

Telephone: 575-748-6940

# SECTION 5, T24S, R32E



## DIRECTIONS TO LOCATION

FROM THE INTERSECTION OF CR-31 AND NM-128/JAL HWY  
GO NORTHEAST ON CR-31 1.80 MILES TO AN EXISTING  
PIPELINE CROSSING. LOCATION IS 1370 FEET SOUTHEAST.

Well Name	NAD 27 Coordinates		NAD 83 Coordinates		Elevation
	Latitude	Longitude	Latitude	Longitude	
Triste Draw #5 FED #2H	32.252612°N	103.699077°W	32.252736°N	103.699559°W	3628'

**KSA**  
ENGINEERS

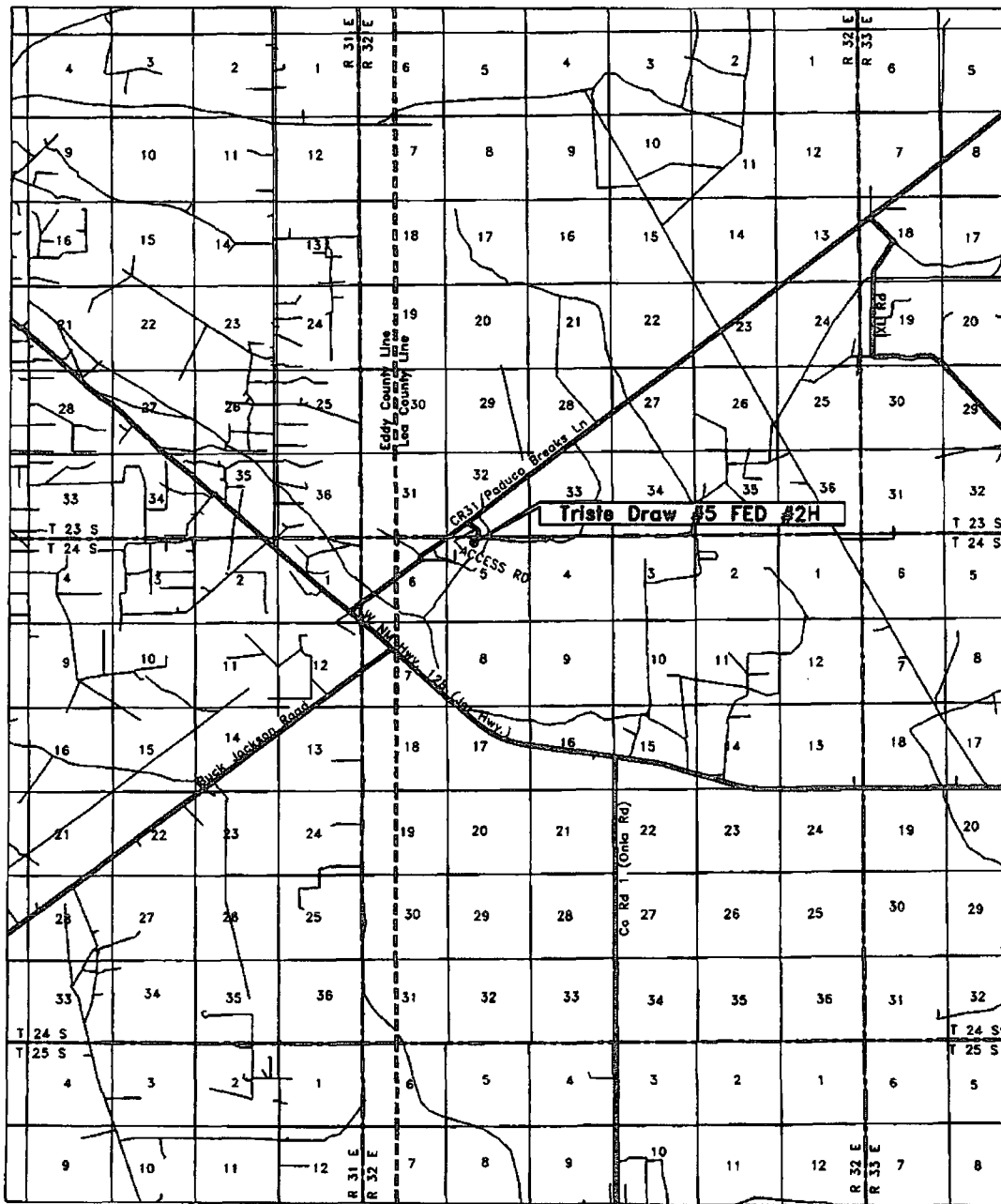
140 E. Tyler St., Suite 600 Longview, Texas 75601  
T. 903-239-7700 F. 903-239-7779  
www.ksaeng.com

Exhibit of Proposed  
Well Pad Triste Draw #5  
FED #2H

Triste Draw #5 FED #2H  
Located 360' From North Line  
and 1750' From West Line  
SEC 5, T24S, R32E  
Lea County, New Mexico

# Exhibit 2

## VICINITY MAP



SCALE: 1" = 2 MILES

Well Name	NAD 27 Coordinates		NAD 83 Coordinates		Elevation
	Latitude	Longitude	Latitude	Longitude	
Triste Draw #5 FED #2H	32.252612°N	103.699077°W	32.252736°N	103.699559°W	3628'

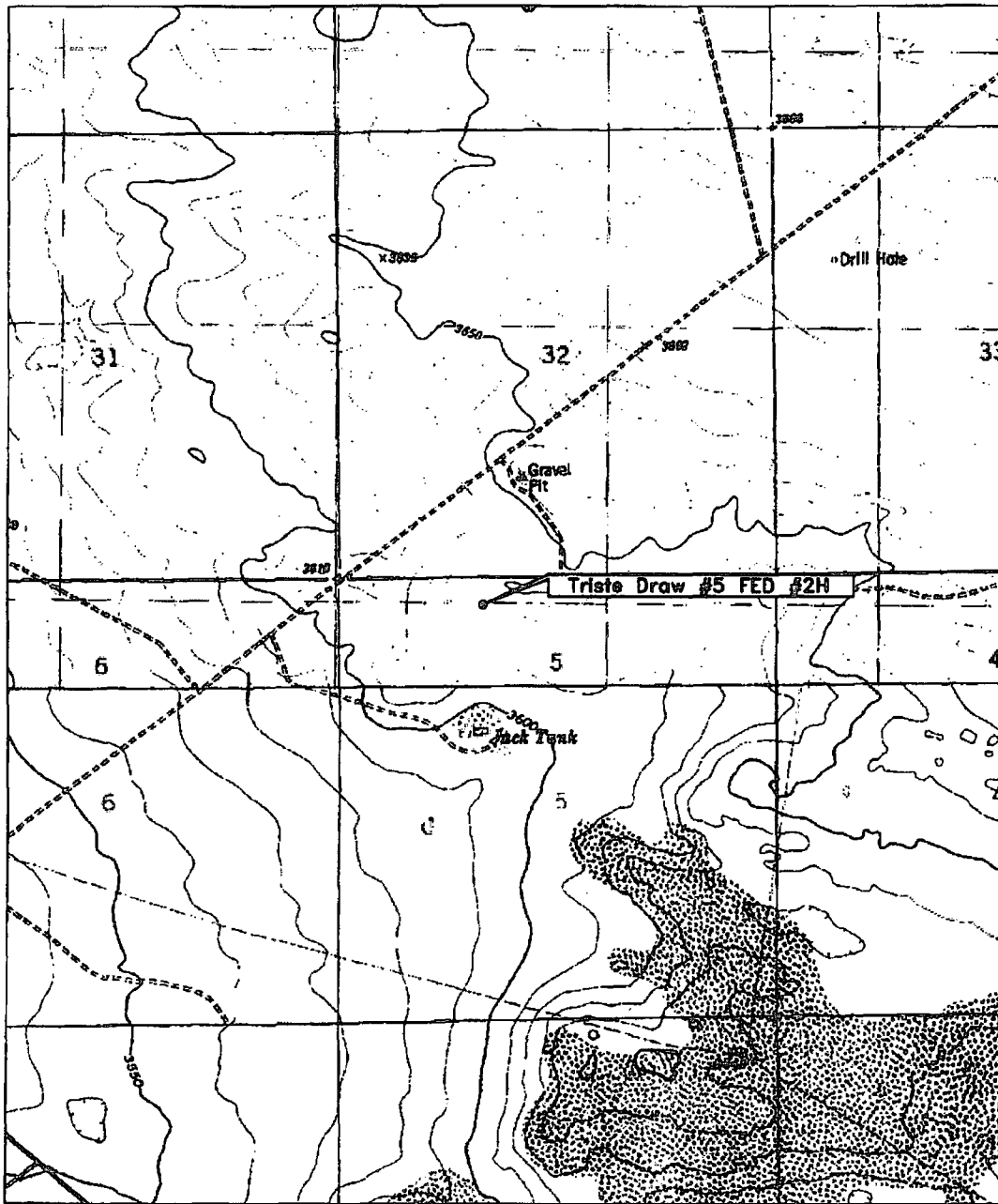
**KSA**  
ENGINEERS

140 E. Tyler St., Suite 400 Longview, Texas 75601  
1.903.236-7700 / 1.903.236-7770  
www.ksaeng.com

COG PRODUCTION LLC  
Vicinity Map  
Triste Draw #5 FED #2H

Triste Draw #5 FED #2H  
Located 360' From North Line  
and 1750' From West Line  
SEC 5, T24S, R32E  
Lea County, New Mexico

# LOCATION VERIFICATION MAP



SCALE: 1"=2000'

CONTOUR INTERVAL: 10'

Well Name	NAD 27 Coordinates		NAD 83 Coordinates		Elevation
	Latitude	Longitude	Latitude	Longitude	
Triste Draw #5 FED #2H	32.252612°N	103.699077°W	32.252736°N	103.699559°W	3628'

**KBA**  
ENGINEERS

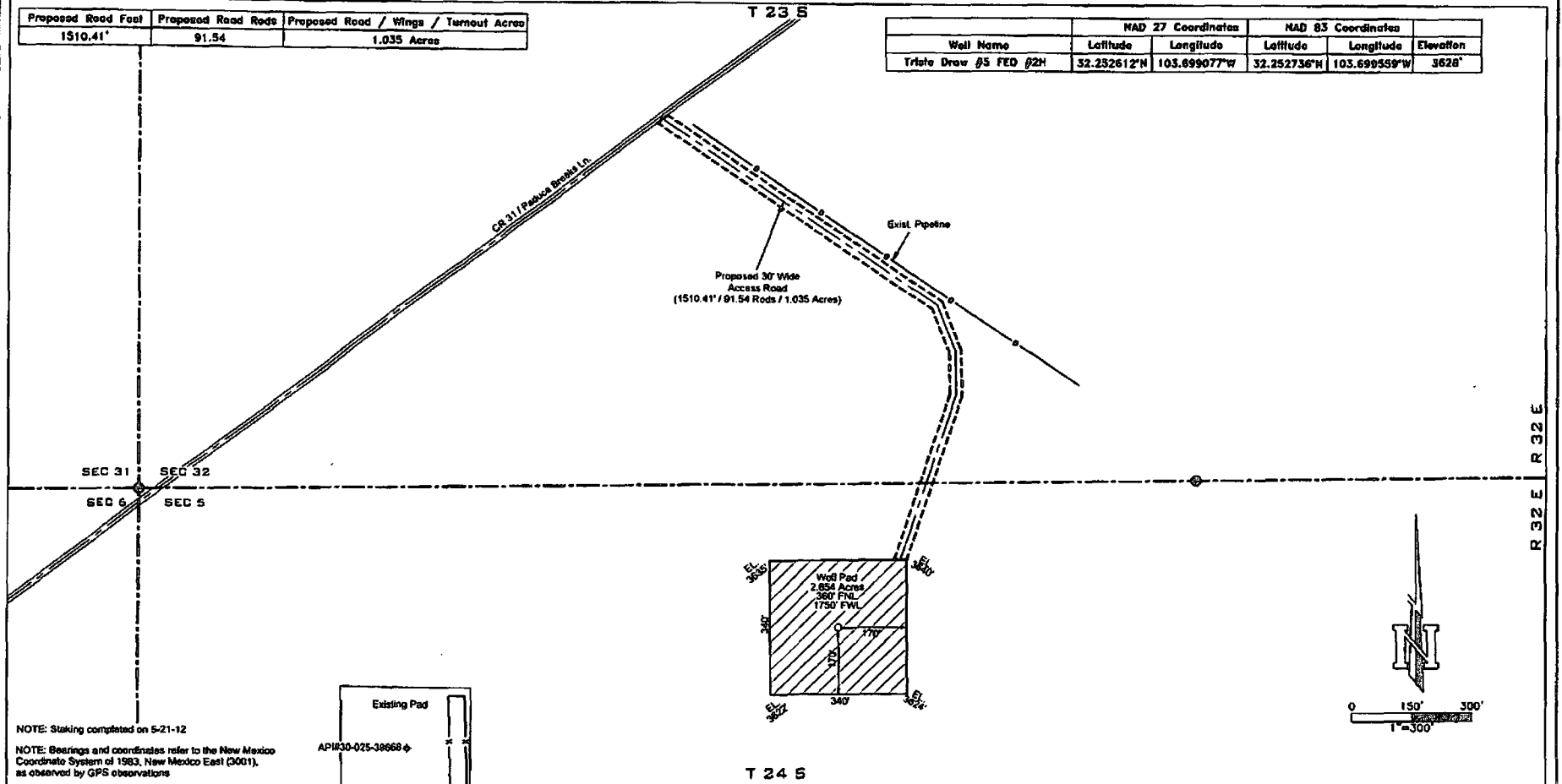
1401 E. Tyler St., Suite 600 Longview, Texas 75601  
T. 903-235-7700 F. 903-235-7779  
www.kbaeng.com

COG PRODUCTION LLC  
Location Verification Map  
Triste Draw #5 FED #2H

Triste Draw #5 FED #2H  
Located 360' From North Line  
and 1750' From West line  
SEC 5, T24S, R32E  
Lea County, New Mexico

Proposed Road Feet	Proposed Road Rods	Proposed Road / Wings / Turnout Acres
1510.41'	91.54	1.035 Acres

Well Name	NAD 27 Coordinates		NAD 83 Coordinates		Elevation
	Latitude	Longitude	Latitude	Longitude	
Triste Draw #5 FED #2H	32.252612°N	103.699077°W	32.252736°N	103.699559°W	3628'



**KBA**  
ENGINEERS

401 E. Tyler St., Suite 100 Lubbock, Texas 79401  
806-752-2700 806-752-7177  
www.kbaeng.com

Exhibit of Proposed  
Well Pad and Access Road  
Triste Draw #5 FED #2H

Total Acreage 3.889  
SEC 5, T24S, R32E  
SEC 32, T23S, R32E  
Lea County, New Mexico



