

District I
1625 N. Trench Dr., Hobbs, NM 88240
Phone: (575) 993-6161 Fax: (575) 993-0730
District II
811 S. First St., Artesia, NM 88210
Phone: (575) 748-1283 Fax: (575) 748-9720
District III
1000 Rio Brazos Road, Aztec, NM 87410
Phone: (505) 334-6178 Fax: (505) 334-6170
District IV
1220 S. St. Francis Dr., Santa Fe, NM 87505
Phone: (505) 476-3460 Fax: (505) 476-3462

State of New Mexico
Energy, Minerals & Natural Resources Department
OIL CONSERVATION DIVISION
1220 South St. Francis Dr.
Santa Fe, NM 87505

Form C-102
Revised August 1, 2011
Submit one copy to appropriate
District Office
☐ AMENDED REPORT

WELL LOCATION AND ACREAGE DEDICATION PLAT

¹ API Number 30-025-41032	² Pool Code 59900	³ Pool Name Triple X JOHNSON RANCH BONE SPRING
⁴ Property Code 39750	⁵ Property Name TIGER SNAKE "33" STATE	
⁶ OGRID No. 6137	⁷ Operator Name DEVON ENERGY PRODUCTION COMPANY, L.P.	⁸ Well Number 1H
		⁹ Elevation 3660.5

¹⁰ Surface Location

UL or lot no.	Section	Township	Range	Lot Idn	Feet from the	North/South line	Feet from the	East/West line	County
N	33	23 S	33 E		350	SOUTH	1980	WEST	LEA

¹¹ Bottom Hole Location If Different From Surface

UL or lot no.	Section	Township	Range	Lot Idn	Feet from the	North/South line	Feet from the	East/West line	County
C	33	23 S	33 E		330	NORTH	1980	WEST	LEA

¹² Dedicated Acres 160	¹³ Joint or Infill	¹⁴ Consolidation Code	¹⁵ Order No.
---	-------------------------------	----------------------------------	-------------------------

No allowable will be assigned to this completion until all interests have been consolidated or a non-standard unit has been approved by the division.

<p>" OPERATOR CERTIFICATION I hereby certify that the information contained herein is true and complete to the best of my knowledge and belief, and that this organization either owns a working interest or undivided mineral interest in the land including the proposed bottom hole location or has a right to drill this well at this location pursuant to a contract with an owner of such a mineral or working interest, or to a voluntary pooling agreement or a compulsory pooling order heretofore entered by the division.</p> <p>Signature: <i>D. H. Cook</i> Date: 2/25/2013 David H. Cook Regulatory Specialist Printed Name: david.cook@dvn.com E-mail Address:</p>	
<p>"SURVEYOR CERTIFICATION I hereby certify that the well location shown on this plat was plotted from field notes of actual surveys made by me or under my supervision, and that the same is true and correct to the best of my belief.</p> <p>Signature: <i>[Signature]</i> Date of Survey: FEBRUARY 13, 2013 Certificate Number: 1530A SURVEY NO. 1530A</p>	

WELL LOCATION AND ACREAGE DEDICATION PLAT

Section 33, Township 23 S, Range 33 E, LEA County

TIGER SNAKE "33" STATE #1H

WELL LOCATION

Bottom of Hole

Surface Location

SW CORNER SEC. 33
LAT. = 32.2540481°N
LONG. = 103.5858782°W
NMSP EAST (FT)
N = 456960.36
E = 772401.35

SE CORNER SEC. 33
LAT. = 32.2540344°N
LONG. = 103.5688168°W
NMSP EAST (FT)
N = 456992.49
E = 777675.80

NE CORNER SEC. 33
LAT. = 32.2685723°N
LONG. = 103.5688255°W
NMSP EAST (FT)
N = 462281.34
E = 777635.45

NW CORNER SEC. 33
LAT. = 32.2685894°N
LONG. = 103.5858855°W
NMSP EAST (FT)
N = 462250.40
E = 772562.29

W Q CORNER SEC. 33
LAT. = 32.2613069°N
LONG. = 103.5858813°W
NMSP EAST (FT)
N = 459601.07
E = 772581.86

Bottom of Hole
LAT. = 32.2675762°N
LONG. = 103.5794794°W
NMSP EAST (FT)
N = 461932.03
E = 774348.69

Surface Location
LAT. = 32.2550025°N (NAD83)
LONG. = 103.5794752°W
NMSP EAST (FT)
N = 457321.40
E = 774378.37

SW CORNER SEC. 33
LAT. = 32.2540481°N
LONG. = 103.5858782°W
NMSP EAST (FT)
N = 456960.36
E = 772401.35

SE CORNER SEC. 33
LAT. = 32.2540344°N
LONG. = 103.5688168°W
NMSP EAST (FT)
N = 456992.49
E = 777675.80

NE CORNER SEC. 33
LAT. = 32.2685723°N
LONG. = 103.5688255°W
NMSP EAST (FT)
N = 462281.34
E = 777635.45

W Q CORNER SEC. 33
LAT. = 32.2613069°N
LONG. = 103.5858813°W
NMSP EAST (FT)
N = 459601.07
E = 772581.86

Bottom of Hole
LAT. = 32.2675762°N
LONG. = 103.5794794°W
NMSP EAST (FT)
N = 461932.03
E = 774348.69

Surface Location
LAT. = 32.2550025°N (NAD83)
LONG. = 103.5794752°W
NMSP EAST (FT)
N = 457321.40
E = 774378.37

SW CORNER SEC. 33
LAT. = 32.2540481°N
LONG. = 103.5858782°W
NMSP EAST (FT)
N = 456960.36
E = 772401.35

SE CORNER SEC. 33
LAT. = 32.2540344°N
LONG. = 103.5688168°W
NMSP EAST (FT)
N = 456992.49
E = 777675.80

NE CORNER SEC. 33
LAT. = 32.2685723°N
LONG. = 103.5688255°W
NMSP EAST (FT)
N = 462281.34
E = 777635.45

W Q CORNER SEC. 33
LAT. = 32.2613069°N
LONG. = 103.5858813°W
NMSP EAST (FT)
N = 459601.07
E = 772581.86

Bottom of Hole
LAT. = 32.2675762°N
LONG. = 103.5794794°W
NMSP EAST (FT)
N = 461932.03
E = 774348.69

Surface Location
LAT. = 32.2550025°N (NAD83)
LONG. = 103.5794752°W
NMSP EAST (FT)
N = 457321.40
E = 774378.37

PP: 200 FSL & 1980 FWL

MAR 06 2013

EL. 3660.0' 650' EL. 3658.0'

150' NORTH
OFFSET
EL. 3660.9'

470'

350'

PROPOSED PAD
3.776 ACRES

150' WEST
OFFSET
EL. 3660.4'

TIGER SNAKE "33" STATE #1H
ELEV. = 3660.5'

200' EAST
OFFSET
EL. 3658.3'

LAT. = 32.2550025°N (NAD83)
LONG. = 103.5794752°W
NMSP EAST (FT)
N = 457321.40
E = 774378.37

THISTLE UNIT #44H

350'

150' SOUTH
OFFSET
EL. 3658.6'

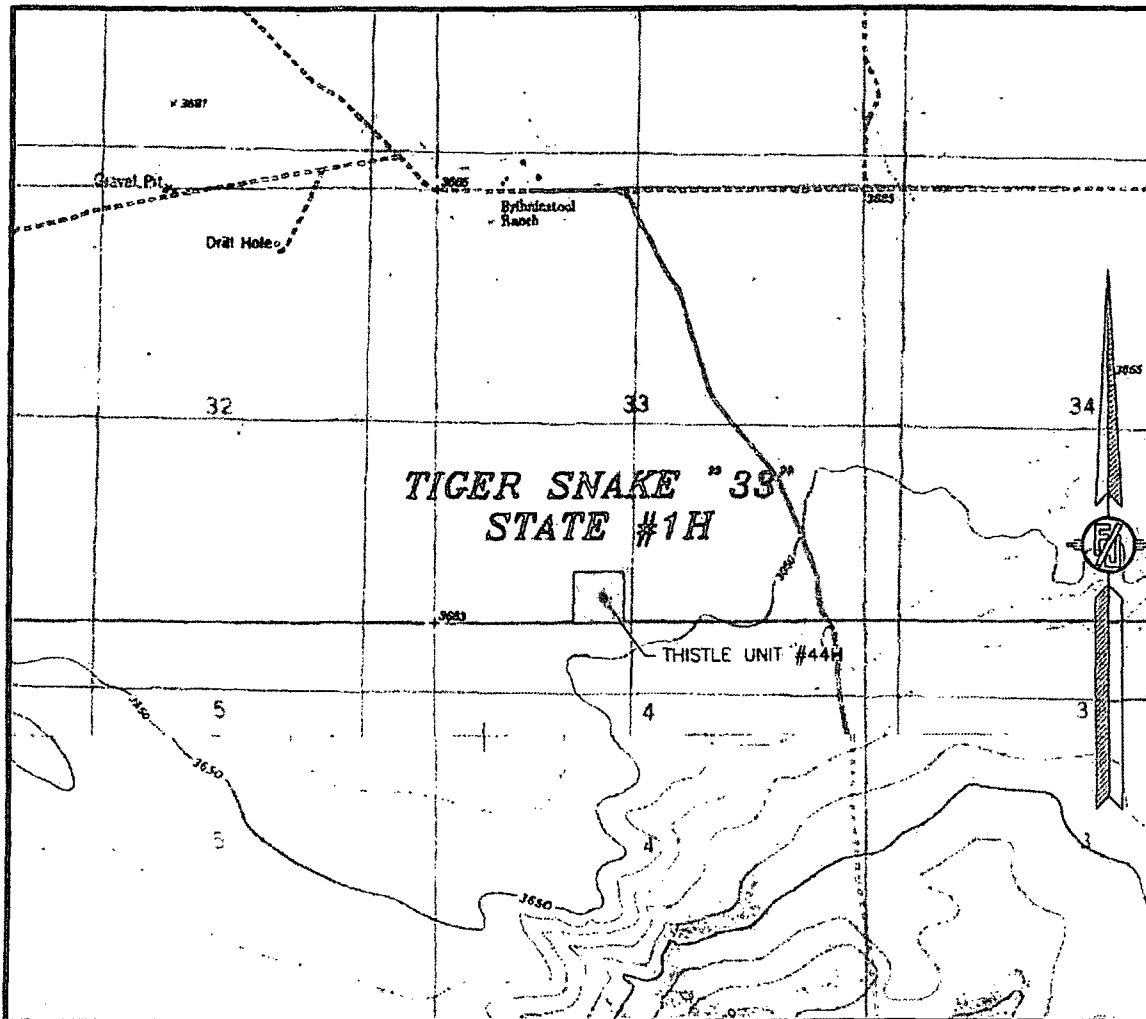
470'

4/W POWER LINE

EL. 3658.1' 650' EL. 3655.2'

301 SOUTH CANAL
(575) 234-3341

SECTION 33, TOWNSHIP 23 SOUTH, RANGE 33 EAST, N.M.P.M.
LEA COUNTY, STATE OF NEW MEXICO
LOCATION VERIFICATION MAP



USGS QUAD MAP:
TIP TOP WELLS

NOT TO SCALE

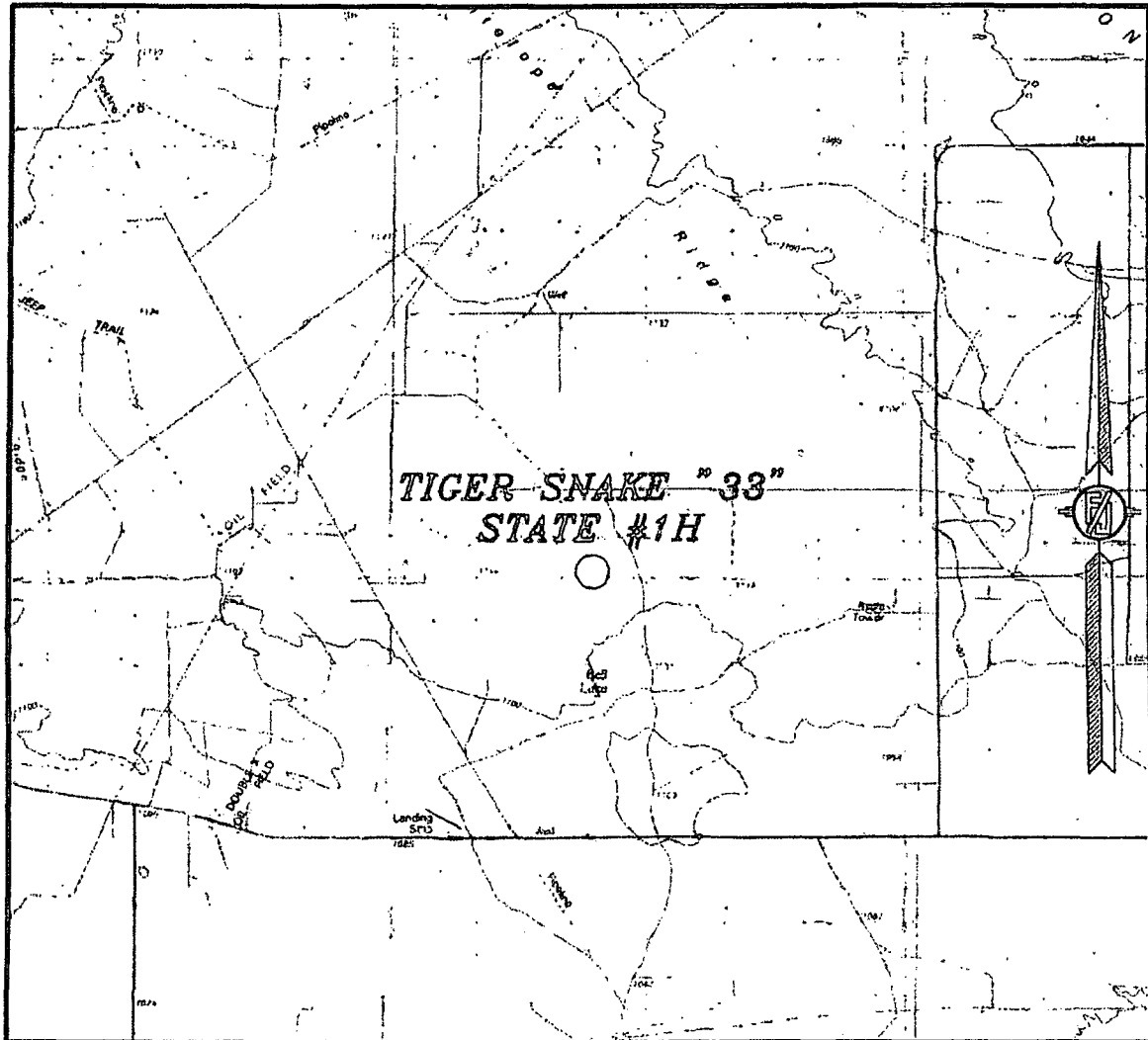
DEVON ENERGY PRODUCTION COMPANY, L.P.
TIGER SNAKE "33" STATE #1H
LOCATED 350 FT. FROM THE SOUTH LINE
AND 1980 FT. FROM THE WEST LINE OF
SECTION 33, TOWNSHIP 23 SOUTH,
RANGE 33 EAST, N.M.P.M.
LEA COUNTY, STATE OF NEW MEXICO

FEBRUARY 13, 2013

SURVEY NO. 1530A

MADRON SURVEYING, INC. 301 SOUTH CANAL (575) 234-3341 CARLSBAD, NEW MEXICO

SECTION 33, TOWNSHIP 23 SOUTH, RANGE 33 EAST, N.M.P.M.
LEA COUNTY, STATE OF NEW MEXICO
VICINITY MAP



NOT TO SCALE

DEVON ENERGY PRODUCTION COMPANY, L.P.

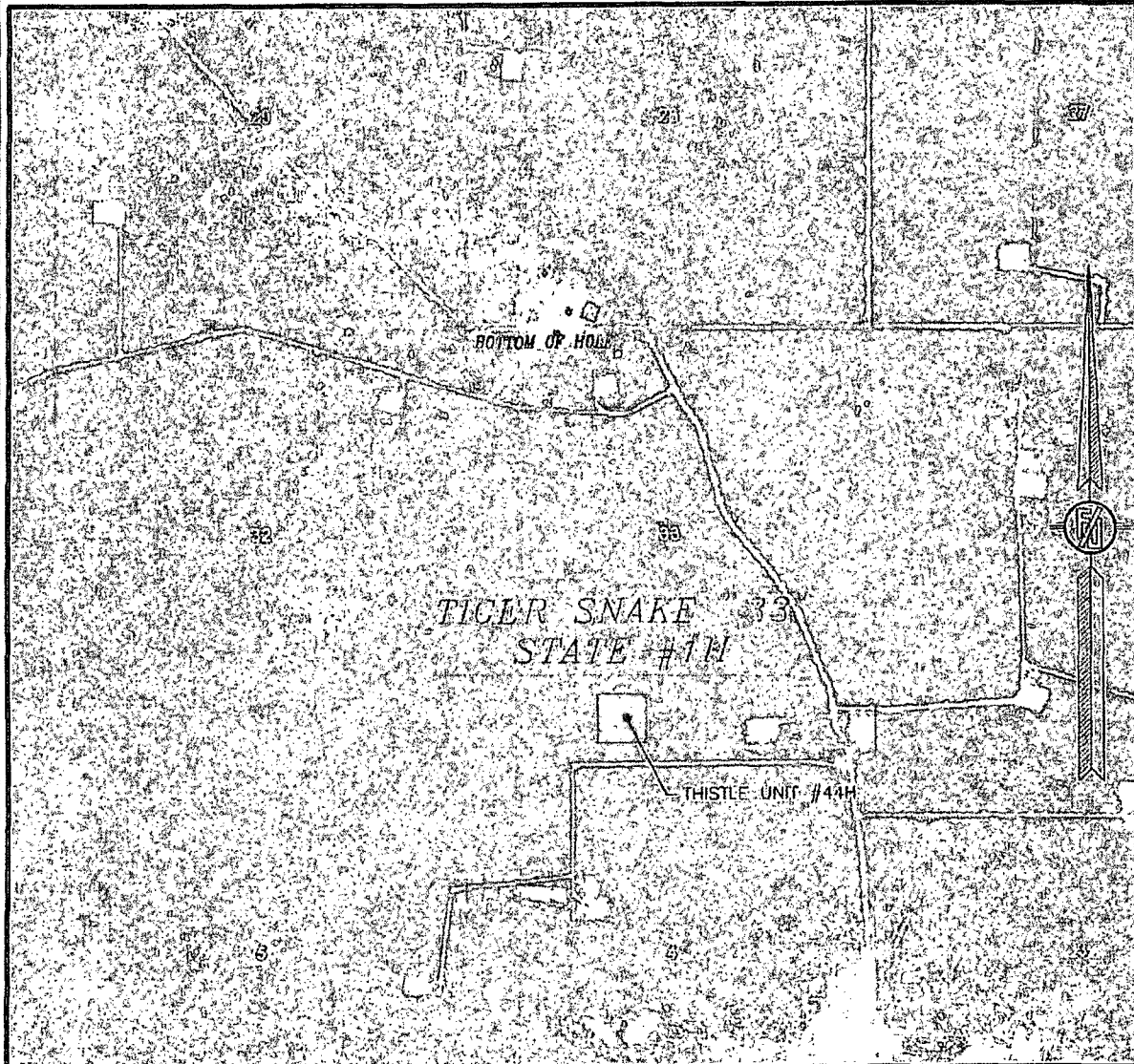
TIGER SNAKE "33" STATE #1H
LOCATED 350 FT. FROM THE SOUTH LINE
AND 1980 FT. FROM THE WEST LINE OF
SECTION 33, TOWNSHIP 23 SOUTH,
RANGE 33 EAST, N.M.P.M.
LEA COUNTY, STATE OF NEW MEXICO

FEBRUARY 13, 2013

SURVEY NO. 1530A

MADRON SURVEYING, INC. 301 SOUTH CANAL (575) 234-3341 CARLSBAD, NEW MEXICO

SECTION 33, TOWNSHIP 23 SOUTH, RANGE 33 EAST, N.M.P.M.
LEA COUNTY, STATE OF NEW MEXICO
AERIAL PHOTO



NOT TO SCALE
AERIAL PHOTO:
GOOGLE EARTH
MARCH 2012

DEVON ENERGY PRODUCTION COMPANY, L.P.

TIGER SNAKE "33" STATE #1H

LOCATED 350 FT. FROM THE SOUTH LINE
AND 1980 FT. FROM THE WEST LINE OF
SECTION 33, TOWNSHIP 23 SOUTH,
RANGE 33 EAST, N.M.P.M.
LEA COUNTY, STATE OF NEW MEXICO

FEBRUARY 13, 2013

SURVEY NO. 1530A

MADRON SURVEYING, INC. 301 SOUTH CANAL (575) 234-3341 CARLSBAD, NEW MEXICO