

DISTRICT I
1625 N. French Dr., Hobbs, NM 88240
Phone (505) 383-6161 Fax: (505) 383-0779

DISTRICT II
811 S. First St., Artesia, NM 88210
Phone (505) 746-1223 Fax: (505) 746-0720

DISTRICT III
1000 Rio Brazos Rd., Aztec, NM 87410
Phone (505) 834-6178 Fax: (505) 834-8970

DISTRICT IV
1220 S. St. Francis Dr., Santa Fe, NM 87505
Phone (505) 476-3460 Fax: (505) 476-3403

State of New Mexico
Energy, Minerals and Natural Resources Department

Form C-102
Revised August 1, 2011

Submit one copy to appropriate
District Office

OIL CONSERVATION DIVISION

1220 South St. Francis Dr.
Santa Fe, New Mexico 87505

WELL LOCATION AND ACREAGE DEDICATION PLAT

☐ AMENDED REPORT

API Number 30-025-41044	Pool Code 23000	Pool Name Eunice Monument: Grayburg San Andres
Property Code 302708	Property Name NMGSAU	Well Number 391
OGRID No. 873	Operator Name APACHE CORPORATION	Elevation 3617'

Surface Location

UL or lot No.	Section	Township	Range	Lot Idn	Feet from the	North/South line	Feet from the	East/West line	County
K	29	19 S	37 E		2520	SOUTH	1380	WEST	LEA

Bottom Hole Location If Different From Surface

UL or lot No.	Section	Township	Range	Lot Idn	Feet from the	North/South line	Feet from the	East/West line	County

Dedicated Acres 40	Joint or Infill	Consolidation Code	Order No.
-----------------------	-----------------	--------------------	-----------

NO ALLOWABLE WILL BE ASSIGNED TO THIS COMPLETION UNTIL ALL INTERESTS HAVE BEEN CONSOLIDATED
OR A NON-STANDARD UNIT HAS BEEN APPROVED BY THE DIVISION

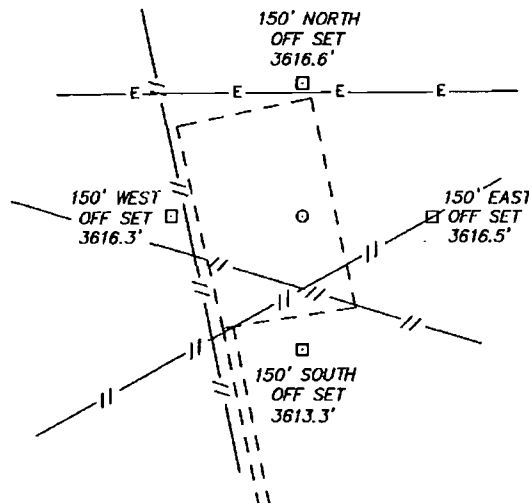
N: 697605.7 E: 823730.2 NAD 27	Lot - N 32°37'51.60" Long - W 103°16'39.72" NMSPCE- N 594902.8 E 866318.4 (NAD-83) Lot - N 32°37'51.16" Long - W 103°16'37.98" NMSPCE- N 594840.7 E 825136.6 (NAD-27)	N: 697621.8 E: 829012.0 NAD 27	OPERATOR CERTIFICATION I hereby certify that the information contained herein is true and complete to the best of my knowledge and belief, and that this organization either owns a working interest or unleased mineral interest in the land including the proposed bottom hole location or has a right to drill this well at this location pursuant to a contract with an owner of such a mineral or working interest, or to a voluntary pooling agreement or a compulsory pooling order heretofore entered by the division. Signature: Vicki Brown Date: 2/27/13 Printed Name: Vicki Brown Email Address: vicki.brown@apachecorp.com
N: 692309.0 E: 823762.6 NAD 27		N: 692355.4 E: 829063.6 NAD 27	SURVEYOR CERTIFICATION I hereby certify that the well location shown on this plat was plotted from field notes of actual surveys made by me or under my supervision and that the same is true and correct to the best of my belief. Date Surveyed: JANUARY 2013 Signature: Gary L. Jones Professional Surveyor: 7977 Certificate No.: 27988 BASIN SURVEYS 27988

MAR 06 2013

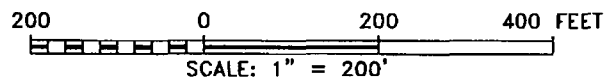
SECTION 29, TOWNSHIP 19 SOUTH, RANGE 37 EAST, N.M.P.M.,
LEA COUNTY, NEW MEXICO.

APACHE CORPORATION
NMGSAU #391
ELEV. - 3617'

Lat - N 32°37'51.60"
Long - W 103°16'39.72"
NMSPCE - N 594902.8
E 866318.4
(NAD-83)
Lat - N 32°37'51.16"
Long - W 103°16'37.98"
NMSPCE - N 594840.7
E 825136.6
(NAD-27)



WELL IS LOCATED ±12 MILES SOUTHWEST OF HOBBS, NEW MEXICO.



Directions to Location:

FROM THE JUNCTION OF MADDOX AND PEARL
VALLEY, GO EAST ON LEASE ROAD 1.3 MILES TO
PROPOSED LOCATION.

APACHE CORPORATION

REF: NMGSAU #391 / WELL PAD TOPO

THE NMGSAU #391 LOCATED 2520'

FROM THE SOUTH LINE AND 1380' FROM THE WEST LINE OF
SECTION 29, TOWNSHIP 19 SOUTH, RANGE 37 EAST,

N.M.P.M., LEA COUNTY, NEW MEXICO.

BASIN SURVEYS P.O. BOX 1786 - HOBBS, NEW MEXICO

W.O. Number: 27988

Drawn By: J. SMALL

Date: 02-11-2013 Disk: JMS 27988

Survey Date: 01-31-2013

Sheet 1 of 1 Sheets