

District I
1625 N. French Dr., Hobbs, NM 88240
Phone: (575) 393-6161 Fax: (575) 393-0720
District II
811 S. First St., Artesia, NM 88210
Phone: (575) 748-1283 Fax: (575) 748-9720
District III
1000 Rio Bravos Road, Aztec, NM 87410
Phone: (505) 334-6178 Fax: (505) 334-6170
District IV
1220 S. St. Francis Dr., Santa Fe, NM 87505
Phone: (505) 476-3460 Fax: (505) 476-3462

State of New Mexico
Energy, Minerals & Natural Resources Department
OIL CONSERVATION DIVISION
1220 South St. Francis Dr.
Santa Fe, NM 87505

Form C-102
Revised August 1, 2011
Submit one copy to appropriate
District Office

☐ AMENDED REPORT

WELL LOCATION AND ACREAGE DEDICATION PLAT

¹ API Number 30-025-41068	² Pool Code 45793	³ Pool Name MESCALERO ESCARPE, BONE SHAPE
⁴ Property Code	⁵ Property Name DEAD END 15 STATE	⁶ Well Number 1
⁷ OGRID No. 6137	⁸ Operator Name DEVON ENERGY PRODUCTION COMPANY, L.P.	⁹ Elevation 3925.4

¹⁰ Surface Location

UL or lot no.	Section	Township	Range	Lot Idn	Feet from the	North/South line	Feet from the	East/West line	County
G	15	18 S	33 E		1650	NORTH	2285	EAST	LEA

¹¹ Bottom Hole Location If Different From Surface

UL or lot no.	Section	Township	Range	Lot Idn	Feet from the	North/South line	Feet from the	East/West line	County

¹² Dedicated Acres 40 ac	¹³ Joint or Infill	¹⁴ Consolidation Code	¹⁵ Order No.
-----------------------------------------------	-------------------------------	----------------------------------	-------------------------

No allowable will be assigned to this completion until all interests have been consolidated or a non-standard unit has been approved by the division.

<p>S89°23'24"W 2636.55 FT</p> <p>NW CORNER SEC. 15 LAT. = 32.7548377°N LONG. = 103.6595009°W NMSP EAST (FT) N = 639000.90 E = 748490.15</p>		<p>S89°10'47"W 2616.22 FT</p> <p>NE CORNER SEC. 15 LAT. = 32.7549248°N LONG. = 103.6424156°W NMSP EAST (FT) N = 639066.42 E = 753742.51</p>		<p>NO 08 49°N 2640.11 FT</p>
<p>SW CORNER SEC. 15 LAT. = 32.7403459°N LONG. = 103.6595453°W NMSP EAST (FT) N = 633728.37 E = 748510.05</p>		<p>SE CORNER SEC. 15 LAT. = 32.7404112°N LONG. = 103.6424165°W NMSP EAST (FT) N = 633786.06 E = 753776.67</p>		
<p>DEAD END "15" STATE #1 ELEV. = 3925.4' LAT. = 32.7503410°N (NAD83) LONG. = 103.6498676°W NMSP EAST (FT) N = 637383.86 E = 751462.28</p>				
<p>NOTE: LATITUDE AND LONGITUDE COORDINATES ARE SHOWN USING THE NORTH AMERICAN DATUM OF 1983 (NAD83) IN DEGREES MINUTES DECIMAL SECONDS FORMAT. BASIS OF BEARING IS NEW MEXICO STATE PLANE EAST (NAD83) COORDINATES MODIFIED TO SURFACE.</p>				

¹⁷ OPERATOR CERTIFICATION
I hereby certify that the information contained herein is true and complete to the best of my knowledge and belief, and that this organization either owns a working interest or unleased mineral interest in the land including the proposed bottom hole location or has a right to drill this well at this location pursuant to a contract with an owner of such a mineral or working interest, or to a voluntary pooling agreement or a compulsory pooling order heretofore entered by the division.

Signature _____ Date _____

Ryan DeLong
Printed Name

Ryan.DeLong@dvn.com
E-mail Address

¹⁸ SURVEYOR CERTIFICATION
I hereby certify that the well location shown on this plat was plotted from field notes of actual surveys made by me or under my supervision, and that the same is true and correct to the best of my belief.

MARCH 6, 2013
Date of Survey

[Signature]
Signature and Seal of Professional Surveyor

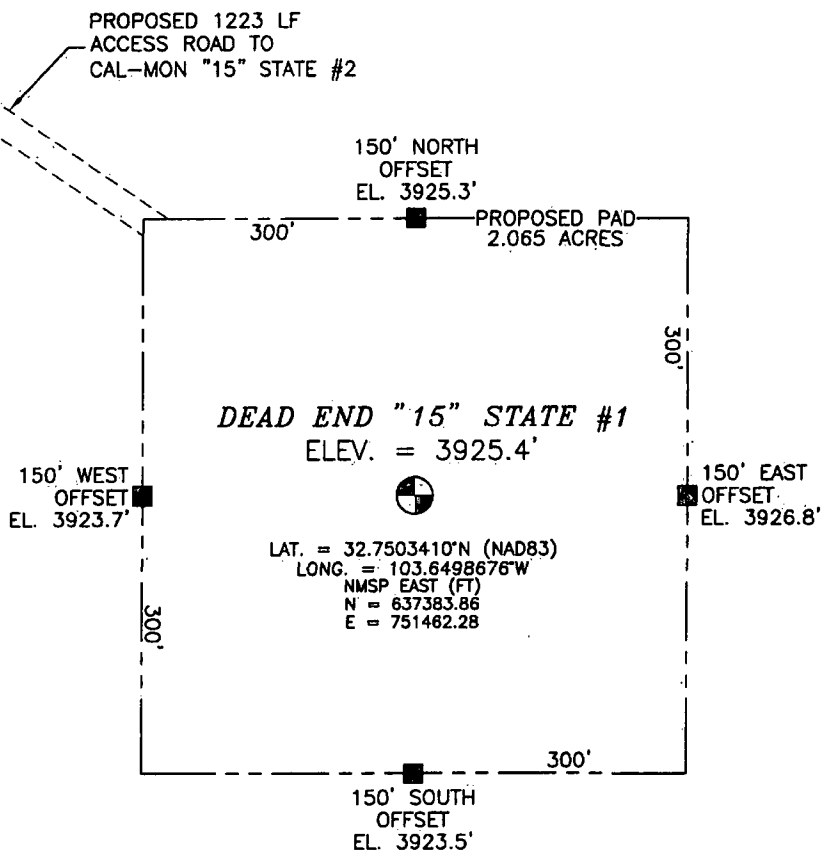
Certificate Number: **FILMON F. JARAMILLO, PLS 12797**

SURVEY NO. 1668

MAR 25 2013

SECTION 15, TOWNSHIP 18 SOUTH, RANGE 33 EAST, N.M.P.M.
LEA COUNTY, STATE OF NEW MEXICO

NOTE: LATITUDE AND LONGITUDE COORDINATES ARE SHOWN USING THE NORTH AMERICAN DATUM OF 1983 (NAD83) IN DEGREES, MINUTES AND DECIMAL SECONDS FORMAT. BASIS OF BEARING IS NEW MEXICO STATE PLANE EAST (NAD83) COORDINATES MODIFIED TO SURFACE.



LAT. = 32.7503410°N (NAD83)
LONG. = 103.6498676°W
NMSP EAST (FT)
N = 637383.86
E = 751462.28



0 10 50 100 200

SCALE 1" = 100'

DIRECTIONS TO LOCATION

FROM THE INTERSECTION OF STATE HIGHWAY 529 AND CR 125 (QUERECHO) GO NORTHWEST ON STATE HIGHWAY 529 FOR APPROX. 2.4 MILES. GO SOUTHWEST ON CALICHE LEASE ROAD APPROX. 1.15 MILES. CONTINUE SOUTH APPROX. 0.23 OF A MILE. CONTINUE EAST APPROX. 0.11 OF A MILE TO SOUTHWEST CORNER OF PAD (CAL-MON "15" STATE #2). FOLLOW ROAD LATHS SOUTHEAST APPROX. 1400 FT TO LOCATION.

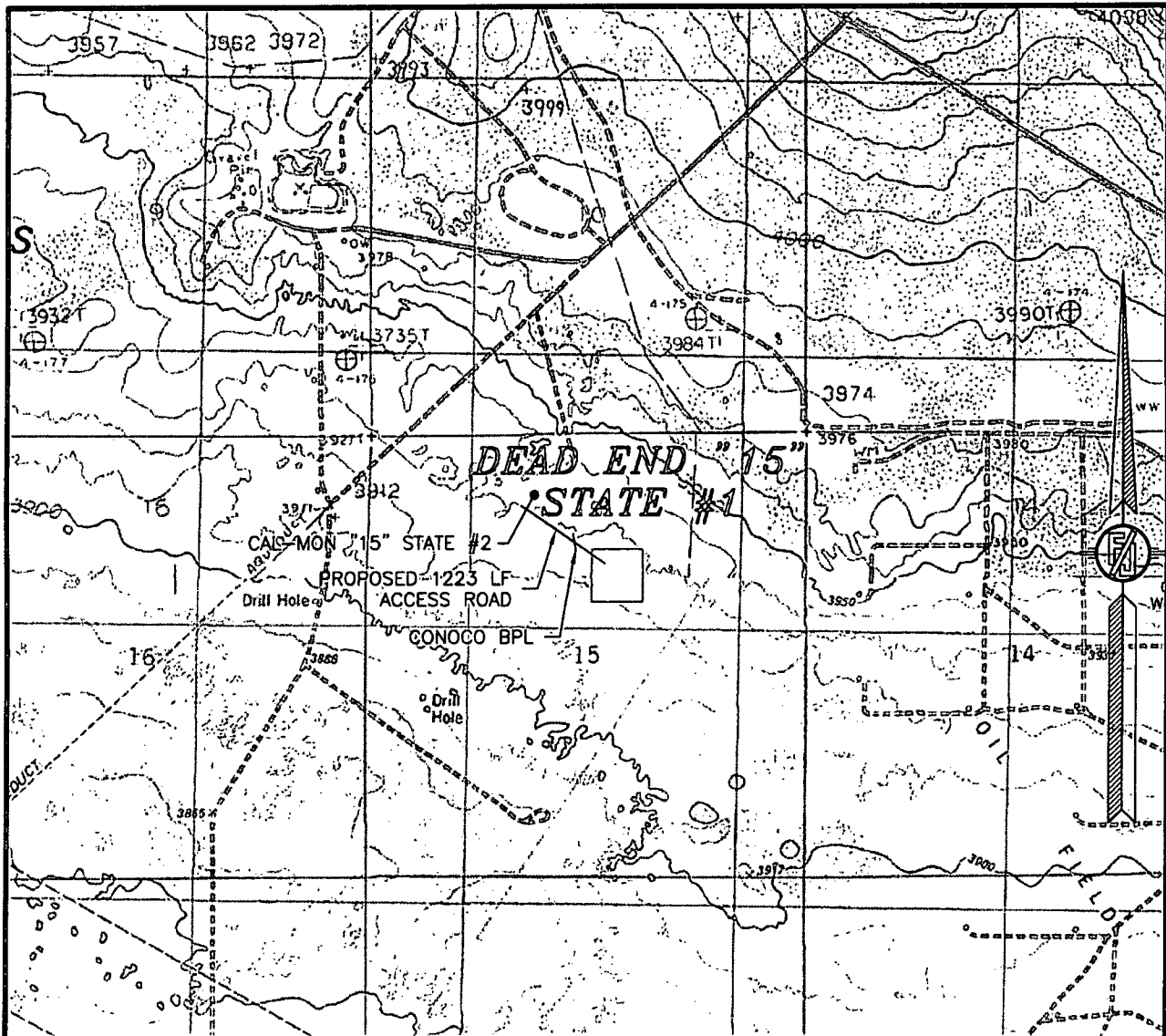
DEVON ENERGY PRODUCTION COMPANY, L.P.
DEAD END "15" STATE #1
LOCATED 1650 FT. FROM THE NORTH LINE
AND 2285 FT. FROM THE EAST LINE OF
SECTION 15, TOWNSHIP 18 SOUTH,
RANGE 33 EAST, N.M.P.M.
LEA COUNTY, STATE OF NEW MEXICO

MARCH 6, 2013

SURVEY NO. 1668

MADRON SURVEYING, INC. 301 SOUTH CANAL CARLSBAD, NEW MEXICO
(575) 234-3341

LOCATION VERIFICATION MAP



NOT TO SCALE

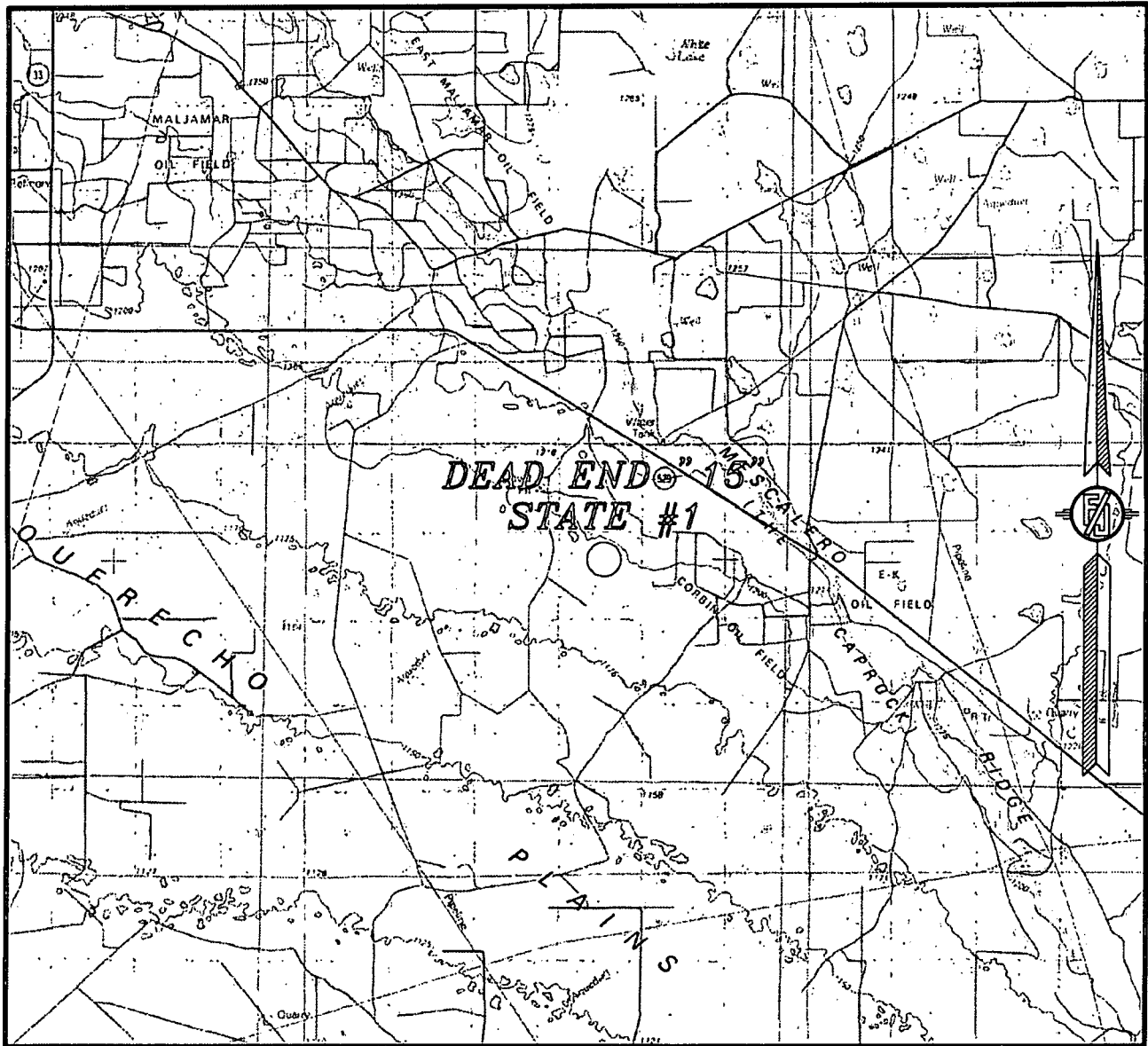
LEA COUNTY, STATE OF NEW MEXICO

MARCH 6, 2013

MADRON SURVEYING, INC. 301 SOUTH CANAL CARLSBAD, NEW MEXICO
(575) 234-3341

301 SOUTH CANAL
(575) 234-3341

SECTION 15, TOWNSHIP 18 SOUTH, RANGE 33 EAST, N.M.P.M.
LEA COUNTY, STATE OF NEW MEXICO
VICINITY MAP



NOT TO SCALE

DEVON ENERGY PRODUCTION COMPANY, L.P.

DEAD END "15" STATE #1

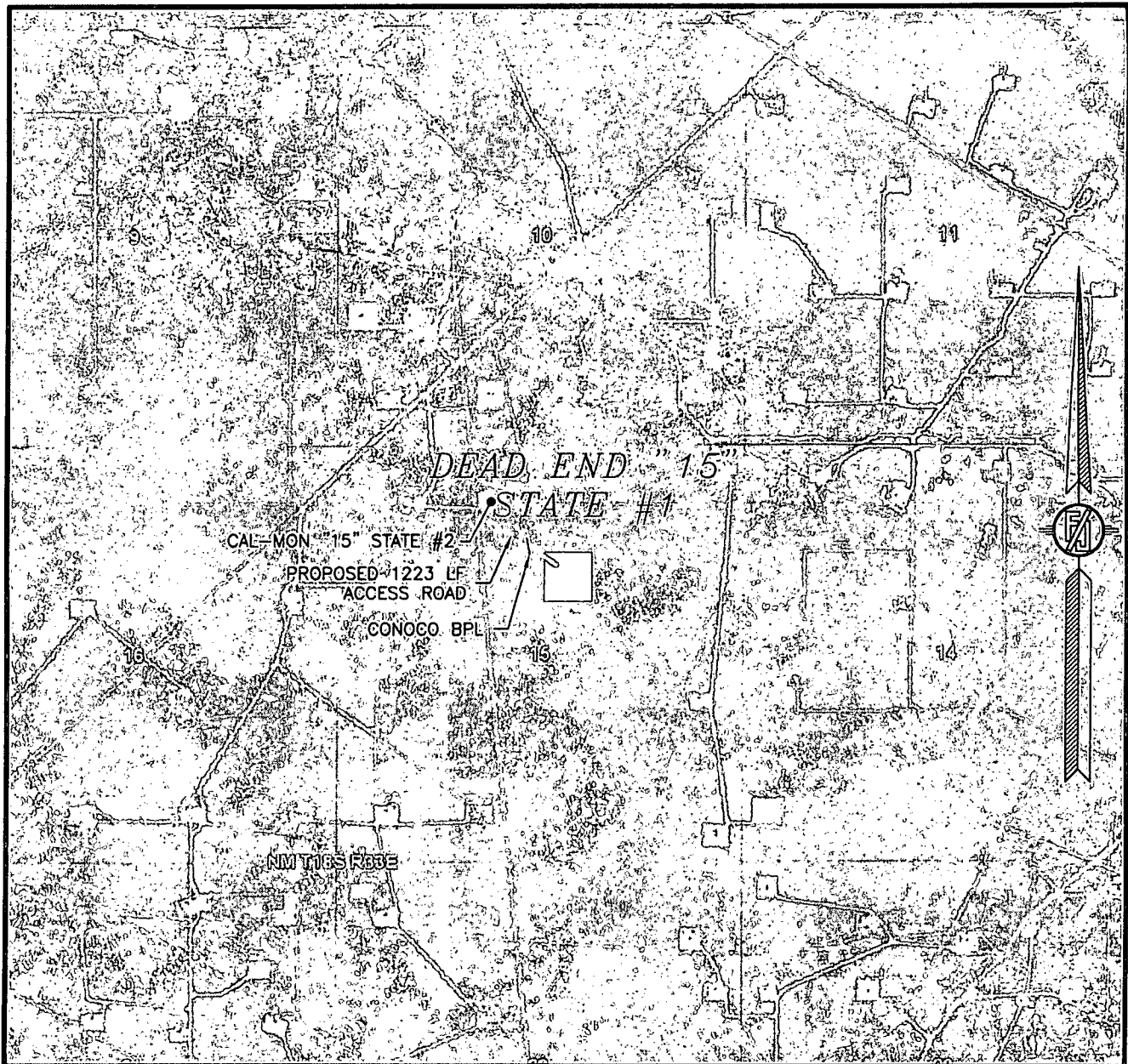
LOCATED 1650 FT. FROM THE NORTH LINE
AND 2285 FT. FROM THE EAST LINE OF
SECTION 15, TOWNSHIP 18 SOUTH,
RANGE 33 EAST, N.M.P.M.
LEA COUNTY, STATE OF NEW MEXICO

MARCH 6, 2013

SURVEY NO. 1668

MADRON SURVEYING, INC. 301 SOUTH CANAL CARLSBAD, NEW MEXICO
(575) 234-3341

SECTION 15, TOWNSHIP 18 SOUTH, RANGE 33 EAST, N.M.P.M.
LEA COUNTY, STATE OF NEW MEXICO
AERIAL PHOTO



NOT TO SCALE
AERIAL PHOTO:
GOOGLE EARTH
MARCH 2012

DEVON ENERGY PRODUCTION COMPANY, L.P.

DEAD END "15" STATE #1

LOCATED 1650 FT. FROM THE NORTH LINE
AND 2285 FT. FROM THE EAST LINE OF
SECTION 15, TOWNSHIP 18 SOUTH,
RANGE 33 EAST, N.M.P.M.
LEA COUNTY, STATE OF NEW MEXICO

MARCH 6, 2013

SURVEY NO. 1668

MADRON SURVEYING, INC. 301 SOUTH CANAL (575) 234-3341 CARLSBAD, NEW MEXICO