

Hydrogen Sulfide Drilling Operations Plan  
Lynch 25 Federal 2  
Cimarex Energy Co.  
Unit P, Section 25  
T20S-R34E, Lea County, NM

30-025-41090

- 1 All Company and Contract personnel admitted on location must be trained by a qualified H<sub>2</sub>S safety instructor to the following:
  - A. Characteristics of H<sub>2</sub>S
  - B. Physical effects and hazards
  - C. Proper use of safety equipment and life support systems.
  - D. Principle and operation of H<sub>2</sub>S detectors, warning system and briefing areas.
  - E. Evacuation procedure, routes and first aid.
  - F. Proper use of 30 minute pressure demand air pack.
- 2 H<sub>2</sub>S Detection and Alarm Systems:
  - A. H<sub>2</sub>S detectors and audio alarm system to be located at bell nipple, end of flow line (mud pit) and on derrick floor or doghouse.
- 3 Windsock and/or wind streamers:
  - A. Windsock at mudpit area should be high enough to be visible.
  - B. Windsock at briefing area should be high enough to be visible.
- 4 Condition Flags and Signs:
  - A. Warning sign on access road to location.
  - B. Flags to be displayed on sign at entrance to location. Green flag indicates normal safe condition. Yellow flag indicates potential pressure and danger. Red flag indicates danger (H<sub>2</sub>S present in dangerous concentration). Only emergency personnel admitted to location.
- 5 Well control equipment:
  - A. See exhibit "E"
- 6 Communication:
  - A. While working under masks chalkboards will be used for communication.
  - B. Hand signals will be used where chalk board is inappropriate.
  - C. Two way radio will be used to communicate off location in case of emergency help is required. In most cases cellular telephones will be available at most drilling foreman's trailer or living quarters.
- 7 Drillstem Testing:

No DSTs or cores are planned at this time.
- 8 Drilling contractor supervisor will be required to be familiar with the effects H<sub>2</sub>S has on tubular goods and other mechanical equipment.
- 9 If H<sub>2</sub>S is encountered, mud system will be altered if necessary to maintain control of formation. A mud gas separator will be brought into service along with H<sub>2</sub>S scavengers if necessary.

HOBBS OCD

APR 03 2013

RECEIVED

APR 04 2013

H<sub>2</sub>S Contingency Plan  
**Lynch 25 Federal 2**  
Cimarex Energy Co.  
Unit P, Section 25  
T20S-R34E, Lea County, NM

**Emergency Procedures**

In the event of a release of gas containing H<sub>2</sub>S, the first responder(s) must:

- ★ Isolate the area and prevent entry by other persons into the 100 ppm ROE.
- ★ Evacuate any public places encompassed by the 100 ppm ROE.
- ★ Be equipped with H<sub>2</sub>S monitors and air packs in order to control the release.
- ★ Use the "buddy system" to ensure no injuries occur during the response.
- ★ Take precautions to avoid personal injury during this operation.
- ★ Contact operator and/or local officials to aid in operation. See list of phone numbers attached.
- ★ Have received training in the:
  - ♦ Detection of H<sub>2</sub>S, and
  - ♦ Measures for protection against the gas,
  - ♦ Equipment used for protection and emergency response.

**Ignition of Gas Source**

Should control of the well be considered lost and ignition considered, take care to protect against exposure to Sulfur Dioxide (SO<sub>2</sub>). Intentional ignition must be coordinated with the NMOCD and local officials. Additionally, the NM State Police may become involved. NM State Police shall be the Incident Command on scene of any major release. Take care to protect downwind whenever there is an ignition of the gas.

**Characteristics of H<sub>2</sub>S and SO<sub>2</sub>**

Common Name	Chemical Formula	Specific Gravity	Threshold Limit	Hazardous Limit	Lethal Concentration
Hydrogen Sulfide	H <sub>2</sub> S	1.189 Air=1	10 ppm	100 ppm/hr	600 ppm
Sulfur Dioxide	SO <sub>2</sub>	2.21 Air=1	2 ppm	N/A	1000 ppm

**Contacting Authorities**

Stata Production Company's personnel must liaise with local and state agencies to ensure a proper response to a major release. Additionally, the OCD must be notified of the release as soon as possible but no later than 4 hours. Agencies will ask for information such as type and volume of release, wind direction, location of release, etc. Be prepared with all information available including directions to site. The following call list of essential and potential responders has been prepared for use during a release. Stata Production Company's response must be in coordination with the State of New Mexico's "Hazardous Materials Emergency Response Plan" (HMER).

H<sub>2</sub>S Contingency Plan Emergency Contacts  
**Lynch 25 Federal 2**  
Cimarex Energy Co.  
Unit P, Section 25  
T20S-R34E, Lea County, NM

<b>Cimarex Personnel</b>		Office	Mobile
Doug Park Drilling Manager		432-620-1934	972-333-1407
Roy Shirley			432-634-2136
<b>Sheriff's Departments</b>			
Eddy County		575-887-1888	
Lea County		575-396-3611	
<b>New Mexico State Police</b>		<b>575-392-5588</b>	
<b>Fire Departments</b>		<b>911</b>	
Carlsbad		575-885-3125	
Eunice		575-394-2111	
Hobbs		575-397-9308	
Jal		575-395-2221	
Lovington		575-396-2359	
<b>Hospitals</b>		<b>911</b>	
Carlsbad Medical Emergency		575-887-4100	
Eunice Medical Emergency		575-394-2112	
Hobbs Medical Emergency		575-397-9308	
Jal Medical Emergency		575-395-2221	
Lovington Medical Emergency		575-396-2359	
<b>Agent Notifications</b>			
Bureau of Land Management		575-393-3612	
New Mexico Oil Conservation Division		575-393-6161	
Mosaic Potash - Carlsbad		575-887-2871	

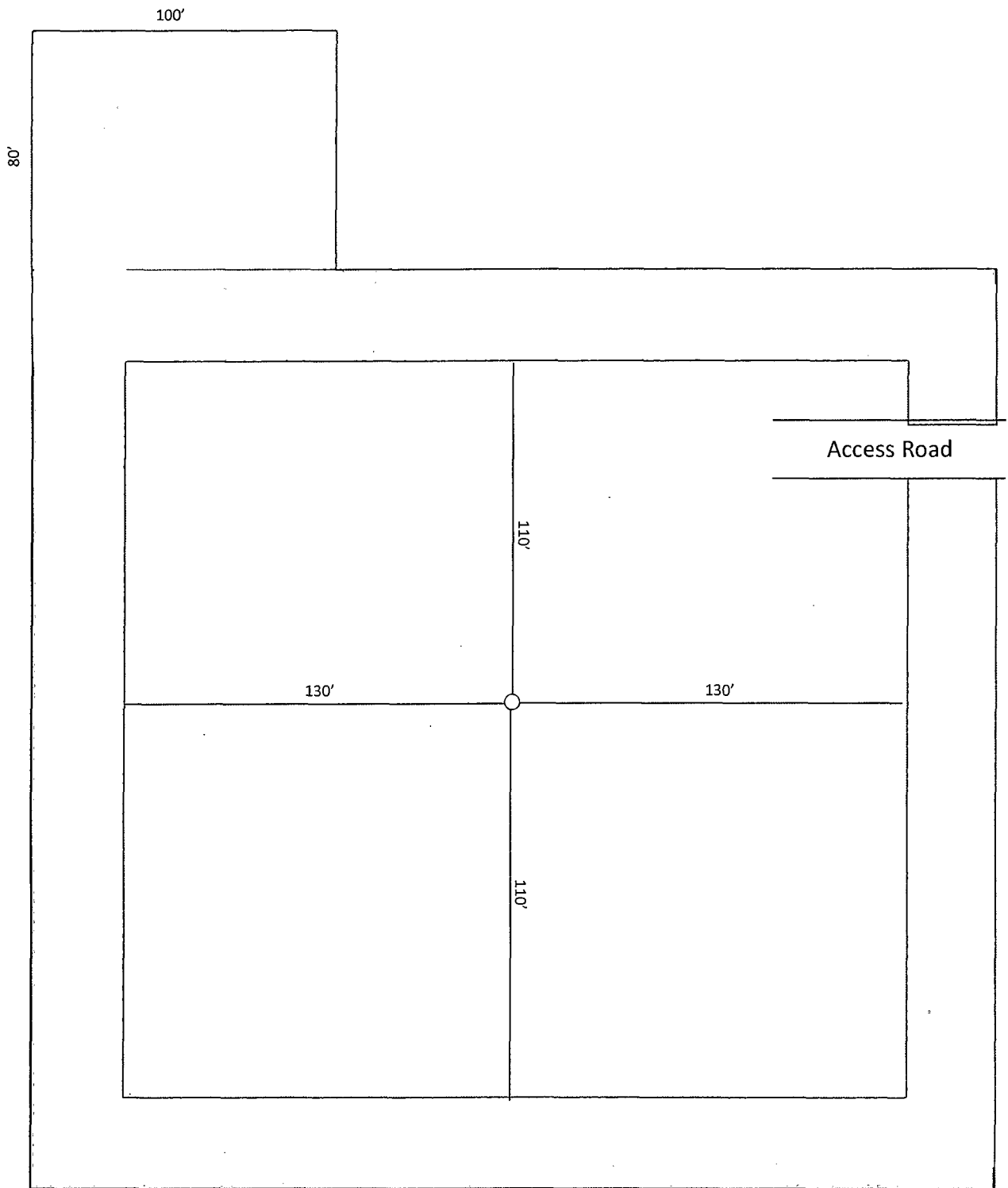


Exhibit D-1  
 Production Facilities Layout Diagram  
**Lynch 25 Federal 2**  
 Cimarex Energy Co. of Colorado  
 25-20S-34E  
 SHL 660 FSL & 150 FEL  
 BHL 660 FSL & 330 FWL  
 Lea County, NM

