

DISTRICT I
1625 N. French Dr., Hobbs, NM 88240
Phone (575) 393-6161 Fax: (575) 393-0720

DISTRICT II
811 S. First St., Artesia, NM 88210
Phone (575) 748-1283 Fax: (575) 748-9720

DISTRICT III
1000 Rio Brazos Rd., Aztec, NM 87410
Phone (505) 334-6178 Fax: (505) 334-6170

DISTRICT IV
1220 S. St. Francis Dr., Santa Fe, NM 87505
Phone (505) 478-3480 Fax: (505) 478-3482

HOBBS OCD

JUL 17 2013

RECEIVED

State of New Mexico
Energy, Minerals and Natural Resources Department

Form C-102
Revised August 1, 2011

Submit one copy to appropriate
District Office

OIL CONSERVATION DIVISION

1220 South St. Francis Dr.
Santa Fe, New Mexico 87505

WELL LOCATION AND ACREAGE DEDICATION PLAT

☐ AMENDED REPORT

API Number 30-025-41272	Pool Code 22900	Pool Name Eunice; Bli-Tu-Dri, N.
Property Code 22503	Property Name NORTHEAST DRINKARD UNIT	Well Number 269
OGRID No. 873	Operator Name APACHE CORPORATION	Elevation 3465'

Surface Location

UL or lot No.	Section	Township	Range	Lot Idn	Feet from the	North/South line	Feet from the	East/West line	County
J	3	21 S	37 E		2410	SOUTH	1950	EAST	LEA

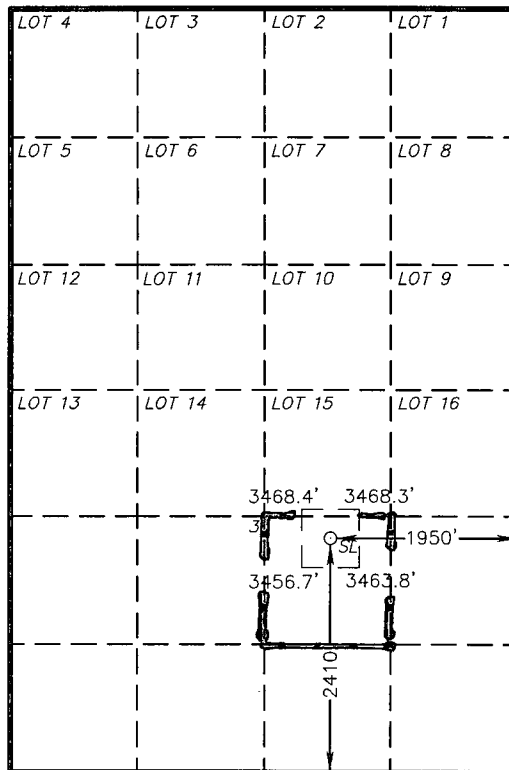
Bottom Hole Location If Different From Surface

UL or lot No.	Section	Township	Range	Lot Idn	Feet from the	North/South line	Feet from the	East/West line	County
Dedicated Acres 40	Joint or Infill	Consolidation Code	Order No.						

NO ALLOWABLE WILL BE ASSIGNED TO THIS COMPLETION UNTIL ALL INTERESTS HAVE BEEN CONSOLIDATED
OR A NON-STANDARD UNIT HAS BEEN APPROVED BY THE DIVISION

SURFACE LOCATION
Lat - N 32°30'26.42"
Long - W 103°08'55.35"
NMSPCE- N 550329.668
E 906531.951
(NAD-83)
Lat - N 32°30'25.99"
Long - W 103°08'53.65"
NMSPCE- N 550269.778
E 865348.113
(NAD-27)

32.507219
103.148236



1" = 2000'

OPERATOR CERTIFICATION

I hereby certify that the information contained herein is true and complete to the best of my knowledge and belief, and that this organization either owns a working interest or unleased mineral interest in the land including the proposed bottom hole location or has a right to drill this well at this location pursuant to a contract with an owner of such a mineral or working interest, or to a voluntary pooling agreement or a compulsory pooling order heretofore entered by the division.

Loraine L. Flores 10/18/12
Signature Date

Sorina L. Flores
Printed Name
sorina.flores@apachecorp.com
Email Address

SURVEYOR CERTIFICATION

I hereby certify that the well location shown on this plat was plotted from field notes of actual surveys made by me or under my supervision, and that the same is true and correct to the best of my belief.

SEPTEMBER 2012
Date Surveyed
Signature of Professional Surveyor
Professional Surveyor Seal of New Mexico 7977
No. 22412
Certificate No. Gary L. Jones 7977
BASIN SURVEYS 27412

JUL 31 2013

dm