

Submit 1 Copy To Appropriate District
Office
District I - (575) 393-6161
1625 N. French Dr., Hobbs, NM 88240
District II - (575) 748-1283
811 S. First St., Artesia, NM 88210
District III - (505) 334-6178
1000 Rio Brazos Rd., Aztec, NM 87410
District IV - (505) 476-3460
1220 S. St. Francis Dr., Santa Fe, NM
87505

State of New Mexico
Energy, Minerals and Natural Resources

Form C-103
Revised August 1, 2011

HOBBS OGD
MAY 22 2013

OIL CONSERVATION DIVISION
1220 South St. Francis Dr.
Santa Fe, NM 87505

SUNDRY NOTICES AND REPORTS ON WELLS (DO NOT USE THIS FORM FOR PROPOSALS TO DRILL OR TO DEEPEN OR PLUG BACK TO A DIFFERENT RESERVOIR. USE "APPLICATION FOR PERMIT" (FORM C-101) FOR SUCH PROPOSALS.)		WELL API NO. 30-025-40463
1. Type of Well: Oil Well <input type="checkbox"/> Gas Well <input type="checkbox"/> Other INJECTION		5. Indicate Type of Lease STATE <input checked="" type="checkbox"/> FEE <input type="checkbox"/>
2. Name of Operator CHEVRON U.S.A. INC.		6. State Oil & Gas Lease No.
3. Address of Operator 15 SMITH ROAD, MIDLAND, TEXAS 79705		7. Lease Name or Unit Agreement Name CENTRAL VACUUM UNIT
4. Well Location Unit Letter A: 1005 feet from the NORTH line and 185 feet from the EAST line Section 36 Township 17-S Range 34-E NMPM County LEA		8. Well Number 258
11. Elevation (Show whether DR, RKB, RT, GR, etc.)		9. OGRID Number 4323
		10. Pool name or Wildcat VACUUM GRAYBURG SAN ANDRES

12. Check Appropriate Box to Indicate Nature of Notice, Report or Other Data

NOTICE OF INTENTION TO:

PERFORM REMEDIAL WORK ☐ PLUG AND ABANDON ☐
TEMPORARILY ABANDON ☐ CHANGE PLANS ☒
PULL OR ALTER CASING ☐ MULTIPLE COMPL ☐
DOWNHOLE COMMINGLE ☐

SUBSEQUENT REPORT OF:

REMEDIAL WORK ☐ ALTERING CASING ☐
COMMENCE DRILLING OPNS. ☐ P AND A ☐
CASING/CEMENT JOB ☐

OTHER:

OTHER COMPLETION OF NEW WELL

13. Describe proposed or completed operations. (Clearly state all pertinent details, and give pertinent dates, including estimated date of starting any proposed work). SEE RULE 19.15.7.14 NMAC. For Multiple Completions: Attach wellbore diagram of proposed completion or recompletion.

PLEASE FIND ATTACHED, THE REPORTS FOR WORK DONE FROM 12/11/2012 THROUGH 02/20/2013 FOR THE COMPLETION OF THIS NEW DRILL.

4-11-B Injg 967 BWPLD@ 1500 PSI

Spud Date:

Rig Release Date:

I hereby certify that the information above is true and complete to the best of my knowledge and belief.

SIGNATURE Denise Pinkerton TITLE: REGULATORY SPECIALIST DATE: 05/20/2013

Type or print name: DENISE PINKERTON E-mail address: leakejd@chevron.com PHONE: 432-687-7375

APPROVED BY: [Signature] TITLE: Dist. Mgr DATE: 10-7-2013

Conditions of Approval (if any):

OCT 07 2013



Summary Report

Completion**Complete****Job Start Date: 12/11/2012****Job End Date: 2/20/2013**

Well Name CENTRAL VACUUM UNIT 258		Lease Central Vacuum Unit	Field Name Vacuum	Business Unit Mid-Continent/Alaska	
Ground Elevation (ft) 3,991.00	Original RKB (ft) 4,009.50	Current RKB Elevation 4,009.50, 12/11/2012		Mud Line Elevation (ft)	Water Depth (ft)

Report Start Date: 12/11/2012

Com

Report Start Date: 1/10/2013

Com

SPOT PUMP TRUCK AND RIG UP PUMP LINES.

JSA MEETING W/ PUMP TRUCK

OPEN UP BRADENHEAD, NO PRESSURE. FILL UP SURFACE BRADENHEAD (.067 BBLS NEEDED) AND INTERMEDIATE BRADENHEAD (.043 BBLS NEEDED). FILL UP PROD CSG W/ FW AND PRESSURE TEST TO 5000 PSI FOR 10 MIN, GOOD TEST. SPOT WIRELINE TRUCK AND PERFORM JSA MEETING W/ CREW.

RU WIRELINE EQUIPMENT

TEST LUBRICATOR TO 1000 PSI, GOOD TEST. RIH W/ GR-CBL-CCL. PERFORM A REPEAT PASS W 0 PSI FROM PBTD(4978') TO SURFACE (LOGS SHOWED GOOD CMT TO SURFACE). PERFORM MAIN PASS W/ 1000 PSI ON WELL FROM PBTD TO SURFACE, GOOD CMT AS WELL ON LOG. TOH LD LOGGING TOOLS. PICK UP SECOND LOGGING TOOLS, SGR-CNL. TIH AND LOG FROM PBTD (4972') TO 3200'. TOH AND LD LOGGING TOOLS.

RD WIRELINE EQUIPMENT AND PUMP TRUCK LINES.

WELL SHUT IN AND SHUT DOWN.

Report Start Date: 2/2/2013

Com

TRAVEL TIME

HSM, DISCUSS TENET #22, DISCUSS HAZARD ID WHEEL #2, DISCUSS E-COLORS #2, REVIEW JSA'S AND SOP'S CALIPER TBG. ELEVATORS AND DOCUMENT ON DAILY SHEET

RIG UP

OFFLOAD EQUIPMENT

PU BHA AND TBG. RIH TO 4984' TAG

PU SWIVEL BREAK CIRC DRILL SOFT CMT FROM 4982' TO 5011' DRILL ON FLOAT COLLAR 1.75 HRS. CIRC CLEAN SDOW

TRAVEL TIME

Report Start Date: 2/4/2013

Com

TRAVEL TIME

HSM, DISCUSS TENET #4, DISCUSS HAZARD ID WHEEL #4, DISCUSS E-COLORS 34, REVIEW JSA'S AND SOP'S CALIPER TBG. ELEVATORS AND DOCUMENT ON DAILY SHEET IN DOG HOUSE

COMPLETE DRILL FLOAT COLLAR AND DRILL DOWN TO 5020'

CIRC CLEAN

POOH TBG. AND L.D. BHA SDON

TRAVEL TIME

Report Start Date: 2/5/2013

Com

CREW TRAVEL

HELD SAFETY MTG, REVIEW JSA'S

CHECK WELL PRESSURE 0#, OPEN WELL. SECURE WELL AND SHUT DOWN

WAITING ON EQUIPMENT (BAKER ATLAS)

Report Start Date: 2/6/2013

Com

CREW TRAVEL

SAFETY MTG, REVIEW JSA'S AND TENET #6

CHECK WELL PRESS=0#. OPEN WELL

RD TBG FLOOR AND ND BOPs.

NU 2-5K FRAC VALVES LOAD AND TEST TO 3500# HIGH AND 500# LOW, CHART AND TEST. NO LEAKS

HELD SAFETY MTG WITH BAKER ATLAS WIRE LINE.

MIRU BAKER ATLAS AND TEST LUBRICATOR TO 500# GOOD

TIH W/4" OWEN SLICK GUNS AND PERF FROM 4906' TO 5000' IN 5 RUNS 2-JSPF 120 DEGREE PHASING, 0.47" EHD, 24.96" PENETRATION.

1ST RUN 4980' TO 5,000'

2ND RUN 4960' TO 4980'

3RD RUN 4940' TO 4960'

4TH RUN 4920' TO 4940'

5TH RUN 4906' TO 4920'

RD WIRE LINE & SHUT IN WELL

CREW TRAVEL

PREP TO ACIDIZE

Report Start Date: 2/7/2013



Summary Report

Completion

Complete

Job Start Date: 12/11/2012

Job End Date: 2/20/2013

Well Name CENTRAL VACUUM UNIT 258		Lease Central Vacuum Unit	Field Name Vacuum	Business Unit Mid-Continent/Alaska	
Ground Elevation (ft) 3,991.00	Original RKB (ft) 4,009.50	Current RKB Elevation 4,009.50, 12/11/2012		Mud Line Elevation (ft)	Water Depth (ft)

Com					
CREW TRAVEL					
SAFETY MTG, RVIEW JSA'S AND TENET #7, REVIEW HAZARD WHEEL. DISCUSS ACIDIZING FLAG OFF HIGH PRESSURE LINES.					
MIRU PETROPLEX ACIDIZING.					
WHILE MIXING CHEMICAL FLUIDS FOR ACID A LEAK WAS NOTICED ON DISCHARGE PUMP, SHUT DOWN PUMP, EST 10-15 GALS OF ACID ON GROUND, COVERED WITH SODA ASH, REPORTED LEAK TO BILL JONES HES AND RORY MATTHEWS,					
WAITED ON EQUIPMENT TO BE REPAIRED, PUMP TRUCK WAS SENT TO LOVINGTON YARD.					
MIRU PETROPLEX, HELD SAFETY MTG,					
PUMP 10,000 GALS 15% NEFE ACID AND DROPPED 376 BALL SEALS AND 6,000# ROCK SALT, SPACED OUT EVENLY, 5 STAGES ACID, 3 STAGES BALL SEALERS, 4 STAGES ROCK SALT TEST LINES TO 4200# GOOD. EST INJ RATE 2.0 BPM @ 1444# BRAKE 1ST STAGE 2,000 GALS 15% ACID WITH 94 BALLS 2ND STAGE 1,500# ROCK SALT 3RD STAGE 2,000 GALS ACID WITH 94 BALLS 4TH STAGE 1,500# ROCK SALT 5TH STAGE 2,00 GALS 15% ACID WITH 94 BALLS AND DROPPED 94 BALLS AFTER ACID. 6TH STAGE 1,500% ROCK SALT 7TH STAGE 2,000 GALS 15% ACID NO BALLS 8TH STAGE 1,500# ROCK SALT 9TH STAGE 197 BBLS FLUSH TO BOTTOM PERF ISIP=2105 5-MIN SI=1822 10-MIN SI=1671 15-MIN SI=1565 MAX PRESS=2666 AVG PRESS=2350 MAX RATE=10.1 BPM AVG RATE=8.5 BPM BLOCK ACTION 1ST SET OF BALLS ON FORMATION 2376 TO 2425 2ND SET OF RIS ON FORMATION 2488 TO 2560 3RD SET RIS ON FORMATION 2400 TO 2666 4TH SET RIS ON FORMATION 2380 TO 2570					
RD PETROPLEX, 1 HOUR SHUT IN					
WELL PRESS=1,000#. OPEN WELL 24164 CHOKE FLOW BACK 37 BBLS IN 1 HOUR, WELL PRESS=100#. OPEN WIDE OPEN FOR 30 MINS WELL PRESS=0# RECOVERED 54 BBLS LAST 30 MINS. SHUT IN WELL, TOTAL FLUID RECOVERED 91 BBLS.					
CREW TRAVEL					
PREP TO SET CP @ 4880', PERF AND ACIDIZE UPPER INTERVAL FROM 4773' TO 4784' AND 4790' TO 4858'.					
Report Start Date: 2/8/2013					
Com					
CREW TRAVEL					
SAFETY MTG, REVIEW JSA'S AND TENET #8, HAZARD WHEEL,					
CHECK WELL PRESSURE 100#, OPEN WELL FLOW BACK, ND TREATING VALVE AND 5K B-1 FLANGE.					
SAFETY MTG, WITH BAKER ATLAS, DISCUSS SETTING CP, PERFORATING, RADIO'S OFF, 3 POINT CONTACT, TRIPPING HAZARD, WELL PRESSURE.					
MIRU BAKER ATLAS TO SET CP @ 4880', PERFORATE FROM 4773' TO 4784' AND 4790' TO 4858' IN 5 RUNS. BAKER DIDN'T BRING OUT 7" LUBICATOR TO RUN 7" CP, WAITING ON TOOLS.					
CREW DRILLS DISCUSS BOP DRIL SPILL DRILL FIRE DRILL EVACUATION DRILL RIG INSPECTION					
TOOLS ON LOCATION, SAFETY MTG, MIRU BAKER ATLAS, ATTEMPT TO TEST LUBICATOR TO 500# LEAKED OFF, ATTEMPT TO PACK OFF NO LUCK,					
RIG DOWN LUBICATOR AND CHANGE OUT CUPS. RU LUBICATOR AND TEST TO 500# GOOD.					
TIH W7" X 3.30' CP ON WIRE LINE AND TIE INTO SHORT JT @ 3452' (BAKER ATLAS RADIAL CMT BOND LOG-CCL 1-10-13) SET CP @ 4880'. PULL UP TRIP IN AND TAG PLUG, TOH WITH SETTING TOOLS, LD TOOLS. TEST PLUG TO 3500# 10-MINS GOOD NO LOST. SHUT IN WELL AND SHUT DOWN					
CREW TRAVEL					
PREP TO PERF AND ACIDIZE					
Report Start Date: 2/9/2013					
Com					
CREW TRAVEL					
SAFETY MTG, REVIEW JSA'S AND TENET #9, REVIEW HAZARD WHEEL.					
CHECK WELL PRESSURE 0#, OPEN WELL					
MIRU BAKER ATLAS AND LUBICATOR					



Summary Report

Completion**Complete****Job Start Date: 12/11/2012****Job End Date: 2/20/2013**

Well Name CENTRAL VACUUM UNIT 258		Lease Central Vacuum Unit	Field Name Vacuum	Business Unit Mid-Continent/Alaska	
Ground Elevation (ft) 3,991.00	Original RKB (ft) 4,009.50	Current RKB Elevation 4,009.50, 12/11/2012		Mud Line Elevation (ft)	Water Depth (ft)

Com					
TIH WITH 4" OWEN GUNS, (TIE INTO BAKER ATLAS RAL-CCL-GR 1/10/2013) TO PERF FROM 4773' TO 4784', 4790' TO 4858' 4" OWN SLICK GUNS, 2JSPF 120 DEGREE PHASING, 0.47" EHD, 24.96" PENETRATION, IN 4 RUNS 1 ST RUN 4838' TO 4858' 20' 40 HOLES 2 ND RUN 4818' TO 4838' 20' 40 HOLES 3 RD RUN 4798' TO 4818' 20' 40 HOLES 4 TH RUN 4790' TO 4798' 8' 16 HOLES 5 TH RUN 4773' TO 4784' 11' 22 HOLES					
RIG DOWN LUBICATOR AND BAKER ATLAS.					
HELD SAFETY MTG, TO PUMP 10,000 GALS 15% NEFE ACID WITH ROCK SALT AND BALL SEALERS					
MIRU PETROPLEX, MIX ACID AND CHEMICALS					
ACIDIZE PERFS FROM 4773' TO 4858' WITH 10,000 GALS 15% NEFE AND DROP 718" 1.30 SG 316 BALLS, AND 6300# ROCK SALT. EST RATE 4.3 BPM 3200# BRAKE @ 3200# 1ST STAGE 2,000 GALS 15% ACID 2ND STAGE 1,500% ROCK SALT 3RD STAGE 2,000 GALS 15% ACID 4TH STAGE 1,500# ROCK SALT 5TH STAGE 2,000 GALS 15% ACID AND DROP 158 BALLS (10 BALLS EVERY 2.4 BBLS ACID) 6TH STAGE 1,500# ROCK SALT 7TH STAGE 2,000 GALS 15% ACID AND DROP 158 BALLS (10 BALLS EVERY 2.4 BBLS ACID) 8TH STAGE 1,800# ROCK SALT 9TH STAGE 2,000 GALS 15% ACID 10TH STAGE FLUSH WITH 192 BBLS TO BOTTOM PERF NOTE: ON 7TH STAGE NOTICED LEAK ON GUARDIAN TREATING VALVE, WENT ON FRESH WATER, CLOSE FRAC VALVE, BLEED OFF PRESS, 10 MINS TO REPAIR, CHANGED OUT GASKET ON 2" X 5K 1/2 UNION. NO BALL ACTION TO RECORD, ROCK SALT ACTION ON LAST STAGE 2000# TO 2200#. ISIP=1850 5-MIN SI=1020 10-MIN SI=776 15-MIN SI=647 MAX PRESS=3200 AVG PRESS=2100 MAX RATE=9.2 AVG RATE=9.0 BALLS DROPPED 316 ROCK SALT 6300# ACID 10,000 GALS TFTR=586 BBLS					
RIG DOWN PETROPLEX, SHUT IN WELL					
CREW TRAVEL					
PREP TO RUN PLUG AND ND FRAC VALVES AND NU BOPs					
Report Start Date: 2/11/2013					
Com					
CREW TRAVEL					
SAFETY MTG, REVIEW JSA'S AND TENETS.					
WELL PRESS=200#, OPEN WELL AND FLOW BACK 50 BBLS IN FIRST HOUR, WELL PRESS=300# FLOW BACK 125 BBLS IN 45 MINS, SHUT IN WELL RECOVERED A TOTAL OF 175 BBLS ALL WATER.					
MIRU BAKER ATLAS AND TEST LUBICATOR TO 500# GOOD.					
OPEN WELL PRESS 300#. TIH W7" RBP 6.078" OD X 3.91", TIE INTO BAKER ATLAS RAL-GR-CCL 1/10/13, SET RBP @ 4500', TOH, BLEED DOWN PRESS, LOAD AND TEST PLUG TO 1,000# GOOD 89 BBLS TO LOAD, , TIH WITH 2ND RBP AND SET @ 500' TOH, RD WIRE LINE.					
ND 2-5K FRAC VALES AND NU BOPs,					
HELD SAFETY STAND DOWN					
TEST BIND RAMS TO 500# HIGH AND 250# LOW					
PICK UP AND HAUL OFF 2-5K FRAC VALVES AND RIG DOWN FLOW BACK MANIFOLD. CREW DRILLED OUT 2 HOLES FOR TBG FLOOR GUARD RAILS AND INSTALLED LOCKING PINS.					
CALIPER 2 718" ELEVATOR, TIH TO 468' TEST 2 718" PIPE RAMS TO 500 HIGH AND 250# LOW, LATCH ON TO RBP @ 500', LET PRESSURE EQUILIZE, TOH W7" RBP AND LD.					
TIH WITH RH AND 60 JTS 2 718" WSTO 1937'					
SHUT IN WELL AND SHUT DOWN					
CREW TRAVEL					
PREP TO CONTINUE TIH AND RETRIEVE RBP @ 4500', TOH, PU BIT AND DRILL OUT CP @ 4880'					
Report Start Date: 2/12/2013					
Com					
CREW TRAVEL					
SAFETY MTG, REVIEW JSA'S AND TENET #2, CALIPER 2 718" ELEVATOR					
CHECK WELL PRESSURE 0#, OPEN WELL					
CONTINUE TIH WRH ON 2 718" WS TO 4480' 139 JTS IN					
DISPLACE HOLE W 10# BRINE WATER 180 BBLS					



Summary Report

Completion

Complete

Job Start Date: 12/11/2012

Job End Date: 2/20/2013

Well Name CENTRAL VACUUM UNIT 258		Lease Central Vacuum Unit	Field Name Vacuum	Business Unit Mid-Continent/Alaska	
Ground Elevation (ft) 3,991.00	Original RKB (ft) 4,009.50	Current RKB Elevation 4,009.50, 12/11/2012		Mud Line Elevation (ft)	Water Depth (ft)

Com	
LATCH ONTO RBP AND LET PRESSURE EQUALIZE WIND DIRECTION CHANGE MOVE DOG HOUSE.	
START TOH WITH RH AND RBP	
LUNCH, REVIEW JSA'S.	
SAFETY STAND DOWN HAZARD HUNT	
CONTINUE TOH AND LD 7" RBP.	
PU TIH WITH BHA ON 2 7/8" WS TOP SUB 3 1/2" X 1 9/16" OD X .88' DC 3 1/2" OD X 1 5/8" ID X 30.91' DC 3 1/2" OD X 1 5/8" ID X 31.35' DC 3 7/16" OD X 1 5/8" ID X 31.19' DC 3 1/2" OD X 1 5/8" ID X 31.18' DC 3 1/2" OD X 1 5/8" ID X 31.70' DC 3 1/2" OD X 1 9/16" ID X 31.32' BIT SUB 4 1/4" OD X 2" ID X 1.85' BEARCLAW BIT 6 1/8" OD X 1 1/2" ID X .53' TOTAL = 190.91'	
TIH WITH BHA ON 2 7/8" WS 142 JTS IN, EOT @ 4763', SHUT IN WELL AND SHUT DOWN	
CREW TRAVEL	
PREP TO DRILL OUT CP, C/O BALL SEALER TO 5020', CIRC HOLE CLEAN, LD WS	
Report Start Date: 2/13/2013	
Com	
CREW TRAVEL	
HELD SAFETY MTG, REVIEW JSA'S AND TENET #3, CALIPER 2 7/8" ELEVATOR	
CHECK WELL PRESSURE 0#, SLITE VACUUM	
TIH TO 4870', PU POWER SWIVEL, 145 IN, 146 ON SWIVEL BRAKE CIRC	
DRILL OUT BALL SEALER FROM 4870' TO 4880', DRILL OUT CP FROM 4880' TO 4882'	
TIH TO 5010 TAG BALLS W/149 IN, 150 ON SWIVEL	
DRILL OUT BALL SEALER FROM 5010' TO 5020'. (5020 PBTD)	
DISPLACE HOLE WITH 10# BRINE WATER.	
RIG DOWN POWER SWIVEL AND RIG UP TBG TONGS	
TOH LD 2 7/8" WS 86 JTS LD EOT @ 2257' SHUT IN WELL	
CREW TRAVEL	
PREP TO LD REMAINING WS AND BHA, RUN DUEL PKR, LON STRING	
Report Start Date: 2/14/2013	
Com	
CREW TRAVEL	
HELD SAFETY MTG, REVIEW JSA'S AND TENET #4, TBG LINE INSPECTION GOOD, CALLIPER 2 7/8" ELEVATOR	
CHECK WELL PRESSURE = 0#, OPEN WELL.	
CONTINUE LD 2 7/8" WS AND DC, 6 1/8" BEAR-CLAW BIT. BIT 35% WEAR.	
RIG DOWN TBG FLOOR, ND BOP ANNULAR, MOVE OUT 2 7/8" WS AND MOVE IN 2 3/8" FIBER-LINE TBG AND 2 3/8" IPC TBG WITH WYP WRAP, TALLY 2 3/8" TBG	
CALLIPER 2 3/8" ELEVATOR, PU RBP ON 2 3/8" WS AND TEST PIPE RAMS TO 500# AND 250# LOW, LITTLE TROUBLE GETTING RBP TO SET	
CREW LUNCH, REVIEW JSA'S, WITH HYDROSTATIC AND TUBE SCOPE TECH	
MIRU PIPE TESTERS AND TUBE SCOPE TECH	
PU HYDRO 2 PEAK PKR AND 6 JTS 2 3/8" TK-99 ID, WITH WYP WRAP OD, 180.92', KICKED OUT 3 JTS PIN ENDS CHIPPED, REPLACED 2 AND REPAIRED 1, PU PEAK HYDRO-2 DUAL PKR 5 7/8" OD X 5.40' X 2 3/8".	
CALIBRATE TBG TONGS FOR MIN TORK FOR (IPC 2 3/8" IPC J-55 1290 FTLBS) AND (FIBER LINE 1412 FTLBS)	
PU TIH W/2 3/8" FIBER LINE TBG WITH TURN DOWN COLLARS, TEST ALL 2 3/8" TBG TO 3000#, 50 JTS IN WITH BHA, EOT @ 1838'.	
RD PIPE TESTERS, SHUT IN WELL AND SHUT DOWN	
CREW TRAVEL	



Summary Report

Completion

Complete

Job Start Date: 12/11/2012

Job End Date: 2/20/2013

Well Name CENTRAL VACUUM UNIT 258		Lease Central Vacuum Unit	Field Name Vacuum	Business Unit Mid-Continent/Alaska	
Ground Elevation (ft) 3,991.00	Original RKB (ft) 4,009.50	Current RKB Elevation 4,009.50, 12/11/2012		Mud Line Elevation (ft)	Water Depth (ft)

Com	
PREP T CONTINUE PU FIBERLINE	
Report Start Date: 2/15/2013	
Com	
CREW TRAVEL	
SAFETY MTG, DISCUSS JSA'S WITH CONTRACTOR, TUBE SCOPE, HYDROSTATIC, NABORS, INSPECT 2 3/8" SLIP TYPE ELEVATOR, INSPECT SINKER BARS.	
WELL PRESSURE 0# OPEN WELL	
CONTINUE PU 2 3/8" FIBER LINE TBG AND TESTING TO 3,000# BELOW SLIPS.	
CREW LUNCH, REVIEW JSA'S	
CONTINUE TIH PU 2 3/8" FIBER-LINE TBG, ALL TEST TESTED GOOD TO 3,000#	
RIG DOWN PIPE TESTERS AND TUBE-SCOPE TECH.	
NU 1/2 MOON HANGER IN WELL AND	
RIG UP ON TBG, DROPPED 1.25" BALL, ATTEMPT TO SET BOTTOM PKR, @ 4881'. PRESS UP TO 450# BLED DN TO 150# IN 4 MINS, PRESS UP TO 850#, PKR SET 750# LOST PRESS TO 400# IN 3-MINS, PRESS UP TO 1,000# LOST 200# IN 2-MINS, PRESS UP TO 1,500# BLED DN TO 750# IN 3-MINS, PRESSURED UP TO 2,000# UPPER PKR SET @ 1800#, LOST 1,000# IN 2-MINS, PRESS UP TO 2100# BLED DN TO 0# IN 5 MINS UPPER PKR @ 4691'.	
PRESSURE UP ON TBG TO SURGE PRESSURE AND KNOCK BALL OFF SEAT, SURGED SEVERAL TIMES, TEST DN TBG AND LEAKED OFF, LOAD AND TEST BACK SIDE TO 500# AND LEAKED OFF SHUT IN WELL AND SHUT DOWN	
CREW TRAVEL	
PREP TO SET 1.43" (R) BLANKEN PLUG ABOVE LOWER PKR AND TEST TBG STRING AND PKR.	
Report Start Date: 2/18/2013	
Com	
CREW TRAVEL	
SAFETY MTG, REVIEW JSA'S AND TENET #8, HAZARD WHEEL #8, INSPECT 2 3/8" SLIP TYPE ELEVATOR.	
CHECK WELL PRESSURE=0#.	
RETEST TBG TO 2,000# LEAKED OFF, RETEST BACK SIDE TO 500# AND LEAKED OFF, MIRU PIPE TESTERS, TIH WITH SINKER BARS AND TEST CUPS AND SET IN TBG 22' FROM SURFACE, TEST TO 3,000# LEAKED OFF, TOH, AND TIH WITH 12' SINKER BARS WITH TEST CUPS, AND OPEN BOP BLEEDER, TEST TO 3,000# LEAKED OFF, LEAK ABOVE SURFACE, TOH WITH TEST BARS, REMOVE G&E LANDING NIPPLE ABOVE HALF MOON HANGER, CHANGE OUT O-RING (O-RING HAD TEAR). INSTALL LANDING NIPPLE, TIH WITH TEST BARS AND TEST TO 3,200# GOOD, RIG DOWN PIPE TESTERS. RIG UP ON TBG AND TEST TO 2,000# 15-MON NO LOSS, LOAD AND TEST BACK SIDE TO 1,000# 15-MINS NO LOSS. PUMP OUT PUMP OUT PLUG @ 3,000#.	
MOVE IN 5,000' 2 3/8" FIBERLINE TBG WITH TURN DOWN COLLARS.	
MIRU SLICK LINE	
TIH WITH 1.50" GA RING, NO PROBLEMS, TIH WITH 1.43" (R) BLANKEN PLUG AND SET @ 4879' OFF SLICK LINE, TOH.	
RIG DOWN SLICK LINE	
INSTALL BPV IN LONG STRING, SET WELL HEAD SETTING PINS, TEST 2 3/8" BOP PIPE RAMS TO 250# LOW AND 1,000# HIGHT, GOOD, RELEASE PRESS OFF BPV,	
RIG UP PIPE TESTERS & TUBE SCOPE TECH	
TIH W/2 3/8" X 1.20" SEAL ASSEMBLY, 2 3/8" X .85" X 1.56" FRO-FILE (R) ON 2 3/8" FIBERLINE TBG 100 JTS IN, EOT @ 3241'.	
RIG DOWN PIPE TESTERS, SHUT IN WELL AND SHUT DOWN	
CREW TRAVEL	
PREP TO CONTINUE PU TBG,SPACE OUT, CIRC PKR FLUID.	
Report Start Date: 2/19/2013	
Com	
travel time	
hsm, discuss tenetr #9, discuss hazard id wheel #9, discuss e-colors #9, review jsa's and sop's caliper tbg. elevators and document on daily sheet in doghouse	
Rpu hydro testers and pu fiberlined tbg. rih to 4375' rd hydro testers	
circ. pkr fluid	
set tbg. and seal assb. in pkr HAD TO HAMMER SHORT TBG LANDING NIPPLE DOWN INTO HANGER ASSB. TO GET SEATED EVEN WAS ABOUT 1/2" HIGER THAN LONG STRING	
test csg. to 550# gained 20# in 15 min bled off retest to 550# gaigned 15# in 15 min bled off wait 30 min retest to 550# gained 20# in 15 min bled off	
set bvp in well on short string nd bop	
nu well dual tree remove bvp on short string and long string	
ru slickline rih and removed 1.43 prong rih recovered plug in short string on spouth side of well tree closed tbg. valve rih w/ slickline and remove 1.43 prong in long string rih and sheared pin did not recover plug repinned and rih and recovered plug rd slickline rd slickline	
travel time	



Summary Report

Completion
Complete

Job Start Date: 12/11/2012

Job End Date: 2/20/2013

Well Name CENTRAL VACUUM UNIT 258		Lease Central Vacuum Unit	Field Name Vacuum	Business Unit Mid-Continent/Alaska	
Ground Elevation (ft) 3,991.00	Original RKB (ft) 4,009.50	Current RKB Elevation 4,009.50, 12/11/2012		Mud Line Elevation (ft)	Water Depth (ft)

Report Start Date: 2/20/2013

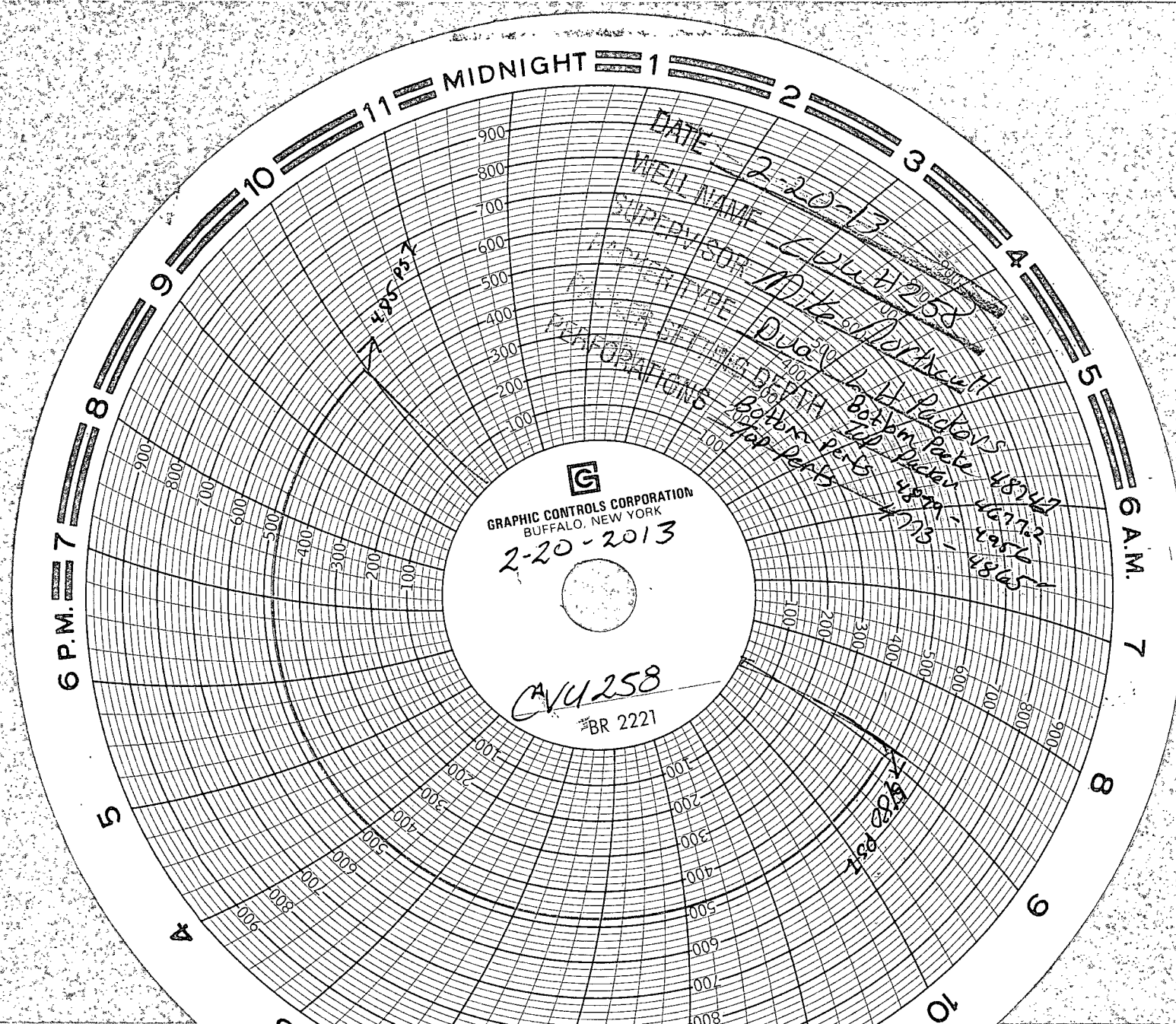
Com

TRAVEL TIME

HSM, DISCUSS TENET #10, DISCUSS HAZARD ID WHEEL #10, DISCUSS E-COLORS #10 REVIEW JSA'S AND SOP'S CALIPER TBG. ELEVATORS AND DOCUMENT ON DAILY SHEET IN DOG HOUSE

PRESS. CSG TO 480# W/ CHART 32 MIN GAINED 5# BLED OFF PUMP 20 BBLS WTR DOWN LONG STRING 2.5 BPM 2700# PUMP 20 BBLS WTR DOWN SHORT STRING 2.5 BPM 1700# NO COMMUNICATION

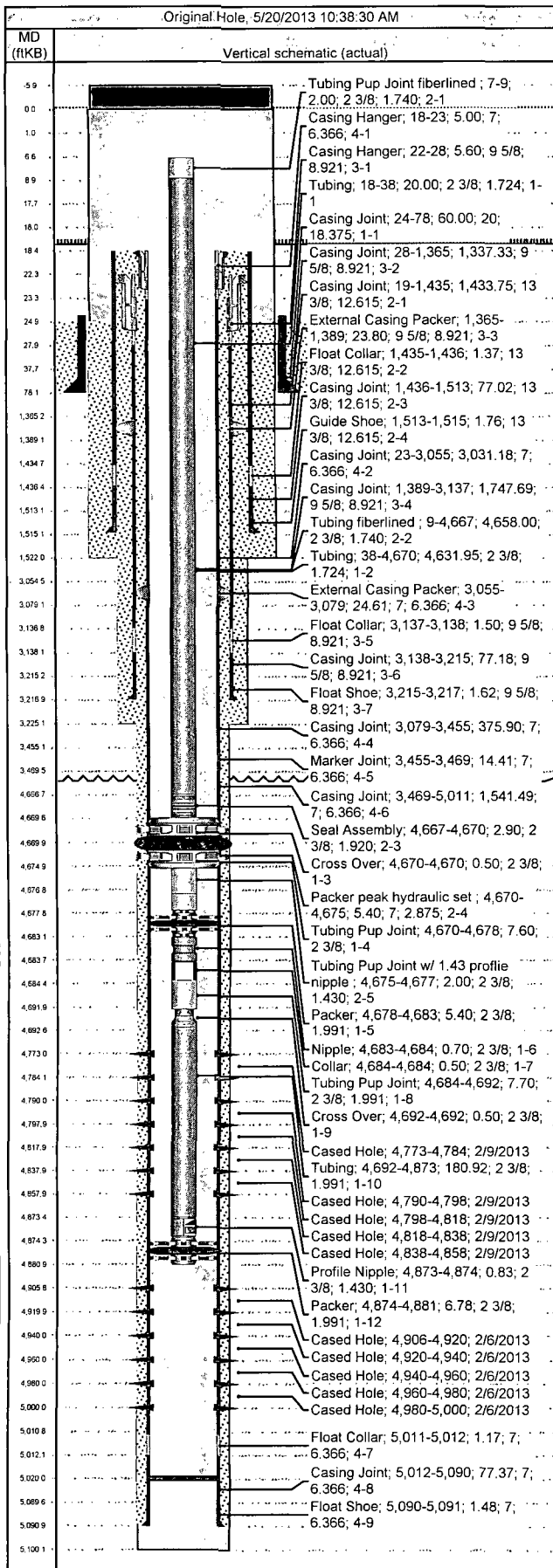
RIG DOWN





Wellbore Schematic

Well Name CENTRAL VACUUM UNIT 258	Lease Central Vacuum Unit	Field Name Vacuum	Business Unit Mid-Continent/Alaska
--------------------------------------	------------------------------	----------------------	---------------------------------------

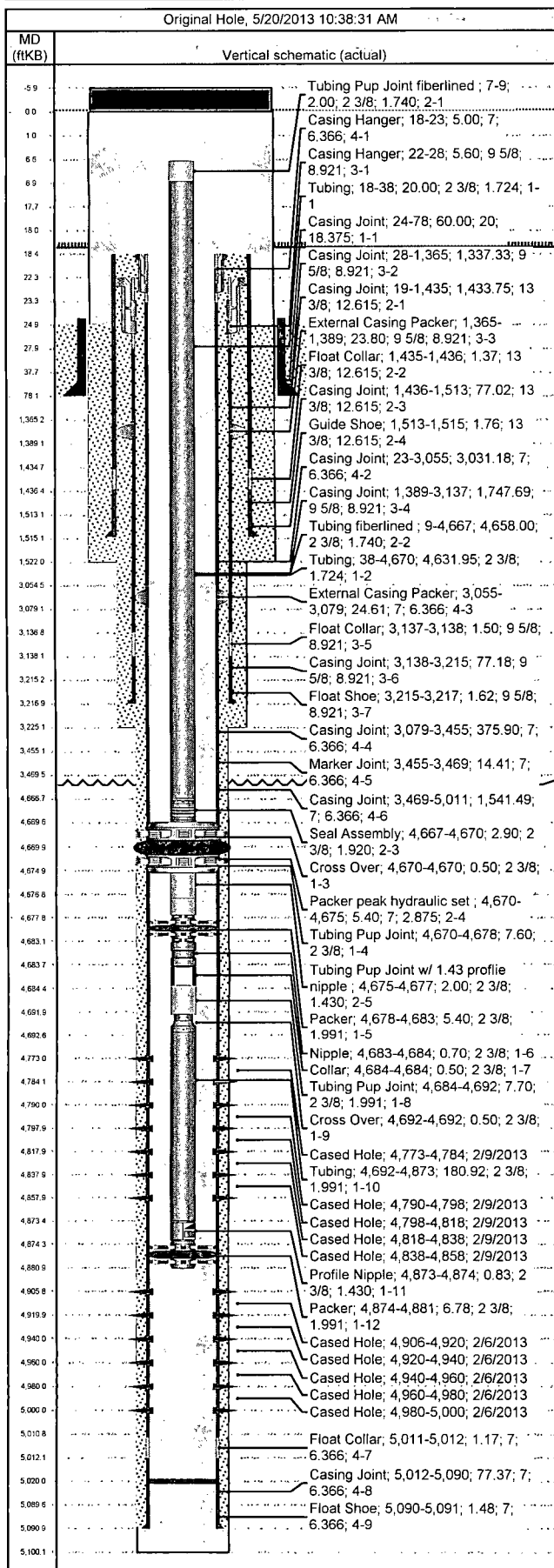


Job Details						
Job Category			Start Date		Release Date	
Completion			1/10/2013		1/10/2013	
Completion			2/2/2013		2/20/2013	
Casing Strings						
Csg Des	OD (in)	Wt/Len (lb/ft)	Grade		Top Thread	Set Depth (MD) (ftKB)
Conductor	20	169.00	K-55			78
Surface	13 3/8	54.50	J-55			1,515
Intermediate Casing 1	9 5/8	36.00	J-55			3,217
Production Casing	7	23.00	J-55			5,091
Tubing Strings						
Tubing-long string set at 4,881.0ftKB on 2/18/2013 12:00						
Tubing Description		Run Date		String Length (ft)		Set Depth (MD) (ftKB)
Tubing-long string		2/18/2013		4,863.38		4,881.0
Item Des	Jts	OD (in)	Wt (lb/ft)	Grade	Len (ft)	Btm (ftKB)
Tubing	3	2 3/8	4.70	L-80	20.00	37.6
Tubing	144	2 3/8	4.60	L-80	4,631.95	4,669.6
Cross Over	1	2 3/8			0.50	4,670.1
Tubing Pup Joint	1	2 3/8			7.60	4,677.7
Packer	1	2 3/8			5.40	4,683.1
Nipple	1	2 3/8			0.70	4,683.8
Collar	1	2 3/8			0.50	4,684.3
Tubing Pup Joint	1	2 3/8			7.70	4,692.0
Cross Over	1	2 3/8			0.50	4,692.5
Tubing	6	2 3/8	4.70	J-55	180.92	4,873.4
Profile Nipple	1	2 3/8			0.83	4,874.2
Packer	1	2 3/8			6.78	4,881.0
Tubing - short string set at 4,677.0ftKB on 2/19/2013 14:15						
Tubing Description		Run Date		String Length (ft)		Set Depth (MD) (ftKB)
Tubing - short string		2/19/2013		4,670.30		4,677.0
Item Des	Jts	OD (in)	Wt (lb/ft)	Grade	Len (ft)	Btm (ftKB)
Tubing Pup Joint fiberlined	1	2 3/8	4.70	J-55	2.00	8.7
Tubing fiberlined	145	2 3/8	4.70	J-55	4,658.00	4,666.7
Seal Assembly	1	2 3/8			2.90	4,669.6
Packer peak hydraulic set	1	7			5.40	4,675.0
Tubing Pup Joint w/ 1.43 profile nipple	1	2 3/8			2.00	4,677.0
Perforations						
Date	Top (ftKB)	Btm (ftKB)	Shot Dens (shots/ft)	Entered Shot Total	Zone & Completion	
2/9/2013	4,773.0	4,784.0	2.0			
2/9/2013	4,790.0	4,798.0	2.0			
2/9/2013	4,798.0	4,818.0	2.0			
2/9/2013	4,818.0	4,838.0	2.0			
2/9/2013	4,838.0	4,858.0	2.0			
2/6/2013	4,906.0	4,920.0	2.0			
2/6/2013	4,920.0	4,940.0	2.0			
2/6/2013	4,940.0	4,960.0	2.0			
2/6/2013	4,960.0	4,980.0	2.0			
2/6/2013	4,980.0	5,000.0	2.0			
Other Strings						
Run Date	Pull Date	Set Depth (ftKB)	Com			
Other In Hole						
Des	Top (ftKB)	Btm (ftKB)	Run Date	Pull Date	Com	
COPY Bridge Plug (Permanent)	500.0	503.0	2/11/2013	2/11/2013	SET 7" RETREIVEABLE RBP	
Bridge Plug (Permanent)	4,500.0	4,503.0	2/11/2013	2/12/2013	SET 7" RETREIVEABLE RBP	



Wellbore Schematic

Well Name CENTRAL VACUUM UNIT 258	Lease Central Vacuum Unit	Field Name Vacuum	Business Unit Mid-Continent/Alaska
--------------------------------------	------------------------------	----------------------	---------------------------------------



Other In Hole					
Des	Top (ftKB)	Btm (ftKB)	Run Date	Pull Date	Com
Bridge Plug (Permanent) Fasdrill	4,880.0	4,883.0	2/8/2013	2/13/2013	SET 7" CP @ 4880'