

Submit 1 Copy To Appropriate District Office  
District I - (575) 393-6161  
1625 N. French Dr., Hobbs, NM 88240  
District II - (575) 748-1283  
811 S. First St., Artesia, NM 88210  
District III - (505) 334-6178  
1000 Rio Brazos Rd., Aztec, NM 87410  
District IV - (505) 476-3460  
1220 S. St. Francis Dr., Santa Fe, NM 87505

State of New Mexico  
Energy, Minerals and Natural Resources

Form C-103  
Revised August 1, 2011

OIL CONSERVATION DIVISION  
1220 South St. Francis Dr.  
Santa Fe, NM 87505

MAY 22 2013

WELL API NO. 30-025-40465
5. Indicate Type of Lease STATE <input checked="" type="checkbox"/> FEE <input type="checkbox"/>
6. State Oil & Gas Lease No.
7. Lease Name or Unit Agreement Name CENTRAL VACUUM UNIT
8. Well Number 273
9. OGRID Number 4323
10. Pool name or Wildcat VACUUM GRAYBURG SAN ANDRES

SUNDRY NOTICES AND REPORTS ON WELLS (DO NOT USE THIS FORM FOR PROPOSALS TO DRILL OR TO DEEPEN OR PLUG BACK TO A DIFFERENT RESERVOIR. USE "APPLICATION FOR PERMIT" (FORM C-101) FOR SUCH PROPOSALS.)	
1. Type of Well: Oil Well <input checked="" type="checkbox"/> Gas Well <input type="checkbox"/> Other <input type="checkbox"/>	
2. Name of Operator CHEVRON U.S.A. INC.	
3. Address of Operator 15 SMITH ROAD, MIDLAND, TEXAS 79705	
4. Well Location Unit Letter H: 2346 feet from the NORTH line and 481 feet from the EAST line Section 36 Township 17-S Range 34-E NMPM County LEA	
11. Elevation (Show whether DR, RKB, RT, GR, etc.)	

12. Check Appropriate Box to Indicate Nature of Notice, Report or Other Data

NOTICE OF INTENTION TO:

PERFORM REMEDIAL WORK ☐ PLUG AND ABANDON ☐  
TEMPORARILY ABANDON ☐ CHANGE PLANS ☒  
PULL OR ALTER CASING ☐ MULTIPLE COMPL ☐  
DOWNHOLE COMMINGLE ☐

SUBSEQUENT REPORT OF:

REMEDIAL WORK ☐ ALTERING CASING ☐  
COMMENCE DRILLING OPNS. ☐ P AND A ☐  
CASING/CEMENT JOB ☐

OTHER:

OTHER COMPLETION FOR NEW WELL

13. Describe proposed or completed operations. (Clearly state all pertinent details, and give pertinent dates, including estimated date of starting any proposed work). SEE RULE 19.15.7.14 NMAC. For Multiple Completions: Attach wellbore diagram of proposed completion or recompletion.

PLEASE FIND ATTACHED, REPORTS FOR WORK DONE FROM 11/21//2012 THROUGH 03/19/2013 FOR THE COMPLETION OF THIS NEW WELL.

04-11-2013: INJECTING 2400 MCFPD @ 1624 PSI (C02)

Spud Date:

Rig Release Date:

I hereby certify that the information above is true and complete to the best of my knowledge and belief.

SIGNATURE

*Denise Pinkerton*

TITLE: REGULATORY SPECIALIST

DATE: 05/20/2013

Type or print name: DENISE PINKERTON

E-mail address: [leakejd@chevron.com](mailto:leakejd@chevron.com)

PHONE: 432-687-7375

APPROVED BY:

*John R. ...*

TITLE *Dist. Mgr*

DATE *10-7-2013*

Conditions of Approval (if any):

OCT 07 2013



# Summary Report

**Completion****Complete****Job Start Date: 11/21/2012****Job End Date: 3/19/2013**

Well Name CENTRAL VACUUM UNIT 273		Lease Central Vacuum Unit	Field Name Vacuum	Business Unit Mid-Continent/Alaska	
Ground Elevation (ft) 3,990.00	Original RKB (ft) 4,008.50	Current RKB Elevation 4,008.50, 10/27/2012		Mud Line Elevation (ft)	Water Depth (ft)

**Report Start Date: 3/5/2012**

Com

**Report Start Date: 11/21/2012**

Com

Pre-Job Tailgate safety meeting. Discuss JSA and job procurers.

Remove well head cap. Remove BPV. NU 5K 7 1/16 frac valve x 2.

SI, Secure location, SD

**Report Start Date: 11/28/2012**

Com

Prejob safety meeting - Discussed hazards of rigging up and radioactive source on location.

RU wireline truck, tools, crane, and lubricator.

Test lubricator 250 low/ 1000 high

RIH and tag bottom @ 5084'

Log spectral gamma ray from 5084' - surface, and repeat from 5084' - 4000'

Lay tools, lubricator, and crane down and secure. SDFN.

**Report Start Date: 11/29/2012**

Com

Prejob Safety Meeting - Discussed hazards of picking up tools, radioactive sources, and pressure on well and lines while logging.

PU Density logging tools, Pressure test lubricator (250 low/1000 high), log repeat pass from TD - 4000', and main pass from TD - 3200' (int csg shoe) and POOH.

LD density logging tools, attach new torpedo head for RAL log, and PU RAL logging tools.

Pressure test lubricator (250 low/1000 high) and run RAL log. Repeat pass TD - 4000' @ 0 psi, and main pass from TD - Surface @ 1000 psi

Lay down tools and crane for night

Surface casing valve had 0 PSI and took 1/4 bbl to fill.

Intermediate casing valve had 0 PSI and was full.

Tested against casing and both frac valves. Both tests were 15 min @ 3500 PSI and both were good.

RD pump truck, secure well, and SDFN

**Report Start Date: 11/30/2012**

Com

Pre-Job Saefty Meeting - Discussed crane fall radius and affected equipment, and procedure for pulling over 50% of line capacity.

RU crane and PU RPM logging tools

Run RPM log.

Repeat Section from TD - 4000' @ 10'/ min

Main pass from TD - 3200' @ 10'/min

RD Crane and E-line truck and shut down for weekend.

**Report Start Date: 12/20/2012**

Com

CREW TRAVEL WITH RIG, FROM HOBBS YARD TO LOCATION,

SAFETY MTG, REVIEW JSA'S, TENET #10, HAZARD WHEEL, CALIPER 2 7/8" WS,

CHECK WELL PRESSURE=0#, TEST 7" CSG TO 3000# GOOD, MIRU PULLING UNIT AND REV UNIT, SPOT ACID TKS, WTR TKS, BLOW DN TKS,

CREW LUNCH, REVIEW JSA'S

NU BOP AND TBG FLOOR

MOVE IN PIPE RACKS, 2 7/8" WS AND HYDO-WALK, TALLY WS.

TEST BLIND RAMS 250 LOW AND 1000 HIGH, PU 6 1/8" MTB, BS, 6-3 1/2" DC, TS, 50 JTS 2 7/8" L-80 WS, TEST PIPE RAMS AND ANNULAR 250 LOW AND 1000 HIGH, EOT @ 2100'.

SHUT IN WELL AND SHUT DOWN

CREW TRAVEL

**Report Start Date: 12/21/2012**

Com

CREW TRAVEL

SAFETY MTG, REVIEW JSA'S AND TENET, CALIPER 2 7/8" ELEVATOR.

CHECK WELL PRESSURE 0#, OPEN WELL

CONTINUE PU 2 7/8" WS TO TAG @ 5089'

RIG UP POWER SWIVEL

DRILL OUT CMT FROM 5089' TO 5115'

CIRC HOLE CLEAN AND DISPLACE HOLE WITH FRESH WATER

LD 1 JTS AND POWER SWIVEL, TOH WITH 2 7/8" WS 156 JTS, LD 6- 3 1/2" DC AND 6 1/8" BIT



# Summary Report

Completion

Complete

Job Start Date: 11/21/2012

Job End Date: 3/19/2013

Well Name CENTRAL VACUUM UNIT 273		Lease Central Vacuum Unit	Field Name Vacuum	Business Unit Mid-Continent/Alaska	
Ground Elevation (ft) 3,990.00	Original RKB (ft) 4,008.50	Current RKB Elevation 4,008.50, 10/27/2012		Mud Line Elevation (ft)	Water Depth (ft)

Com

SHUT IN WELL AND SHUT DOWN

CREW TRAVEL

PREP TO PERFORATE AFTER HOLIDAYS

Report Start Date: 12/26/2012

Com

Travel time

Review JSA's, tenet #6, hazard i.d. wheel #6, e-colors #6, caliper tbg elevators

RU Gray Wireline

Test lubricator to 250# low and 1000# high

Start RIH w/ first perf gun, got held up @ surface. Annular rams were only opening half way, so had D&L Meters Tech come out and fix.

Run 5 out of 7 perf runs. Shot perforation intervals: 4908' - 4930', 4970' - 4986', 4990' - 5017', 5017' - 5044', and 5048' - 5080' *Perf*

TIH w/ 40 jts of 2-7/8" tbg and sdon

Travel time

Report Start Date: 12/27/2012

Com

Travel time

Review JSA's, tenet #7, hazard i.d. wheel #7, e-colors #7, caliper tbg elevators *Perf 4823*

RU Gray Wireline. Begin RIH w/ perf guns. Shot perfs from: 4823' - 4848', 4850' - 4856', 4866' - 4870', 4872' - 4882', 4888' - 4908'. RD Gray Wireline.

RU Hydrostatic Pipe Services. Begin TIH w/ 152 jts of 2-7/8" tbg and PKR to 4780'. Hydrotesting tbg to 6000#. RD Hydrostatic Pipe Services

Set PKR @ 4780'. Pressure up to 500#, held good for 10 mins. Sdon

Travel time

Report Start Date: 12/28/2012

Com

Travel time

Review JSA's, tenet #8, hazard i.d. wheel #8, e-colors #8, caliper tbg elevators

BOP, Spill, Fire, Evacuation Drills

RU Petroplex and test lines to 7652#. Established rate w/ 9 bbls of FW. Start pumping acid, pumped 15 bbls and acid communicated around PKR. Switched to flush w/ FW. Unset PKR and pulled 1 jt of 2-7/8" tbg and reset PKR @ 4750'. Started pumping FW and communicated again. Stopped and pumped FW flush of entire hole.

Circulate 60 bbls of FW to clean hole of any acid

TOH w/ 151 jts of 2-7/8" tbg and PKR and stand back

TIH w/ 152 jts of 2-7/8" tbg and new PKR and set PKR @ 4780'.

Started pumping acid again and did not communicate.

RU Petroplex. Start pumping acid and salt rock in gelled brine (GB):

1st Stage: Acid => 85 bbls, 6.7 bpm, 2987#

Block => 1000 lbs, 15.5 bbls GB, 2129#

\*\*\*Note: Only pumped 85 bbls acid in stage 1 because already pumped 15 bbls of acid when we tried to complete the job in the morning.\*\*\*

2nd Stage: Acid => 100 bbls, 7.9 bpm, 2070#

Block => 2000 lbs, 26 bbls GB, 2967#

3rd Stage: Acid => 100 bbls, 9.2 bpm, 2926#

Block => 2000 lbs, 24.8 bbls GB, 2844#

4th Stage: Acid => 100 bbls, 9.2 bpm, 2951#

Block => 3500 lbs, 39 bbls GB, 3265#

5th Stage: Acid => 100 bbls, 9.2 bpm, 2978#

Flush w/ 59.3 bbls of FW to 2978#

ISIP = VACUUM

Avg Rate = 7.5 bpm

+ 5 mins = VACUUM

Max Rate = 9.2 bpm

+ 10 mins = VACUUM

Avg Pressure = 2700#

+ 12 mins = VACUUM

Max Pressure = 3265#

Total Load = 670 bbls

Total salt = 8500 lbs

RD Petroplex and sdon.

Travel time



# Summary Report

Completion  
Complete

Job Start Date: 11/21/2012

Job End Date: 3/19/2013

Well Name CENTRAL VACUUM UNIT 273	Lease Central Vacuum Unit	Field Name Vacuum	Business Unit Mid-Continent/Alaska
Ground Elevation (ft) 3,990.00	Original RKB (ft) 4,008.50	Current RKB Elevation 4,008.50, 10/27/2012	Mud Line Elevation (ft) Water Depth (ft)

Report Start Date: 1/2/2013

Com

Travel time

Review JSA's, tenet #2, hazard i.d. wheel #2, e-colors #2, caliper tbg elevators

Release PKR and begin TOH w/ PKR and 152 jts of 2-7/8" and stand back

PU notched collar and TIH w/ 163 jts of 2-7/8" tbg and tag bottom @ 5118". No fill or rock salt at bottom of well.

TOH w/ 96 jts of 2-7/8" tbg for KS

Have BOP tech come out and install another set of 2-7/8" hydraulic pipe rams on top of BOP. Sdon

Travel time

Report Start Date: 1/3/2013

Com

Travel time

Review JSA's, tenet #3, hazard i.d. wheel #3, e-colors #3, caliper tbg elevators

TOH w/ 2-7/8" KS

RU Gray Wireline. PU AS1-X injection PKR and RIH on WL and set @ 4960'. RD Gray Wireline

TIH w/ 157 jts of 2-7/8" tbg, 10' sub of 2-7/8", and test PKR to 4946' and set the PKR.

Pressure up to 1500# to the injection PKR and test, leaked 300# in 20 mins. Released the PKR and re-set and pressured up to 1500# again to test the injection PKR. Leaked off 300# in 20 mins again. Released PKR and TOH w/ 5 jts of 2-7/8" tbg and lay down. Re-set PKR @ 4778'. Pressure up to 1000# on the backside, held good for 10 mins.

Travel time

Released PKR and TOH w/ 112 jts of 2-7/8" tbg. Leave 40 jts in hole for KS and sdon

Report Start Date: 1/4/2013

Com

Rigs were shut down due to the weather, snow and ice accumulation on the rigs and roads prevented work from being completed.

Report Start Date: 1/7/2013

Com

Travel time

Review JSA's, tenet #7, hazard i.d. wheel #7, e-colors #7, caliper tbg elevators

Perform BOP, Spill, Fire, and Evacuation Drills

Test the 2-3/8" offset rams to 1000# high and 500# low, held good.

TOH w/ 2-7/8" KS and test PKR.

TIH w/ 157 jts of 2-7/8" tbg, test PKR, and on/off tool to 4949'

Latch onto PKR w/ on/off tool. Pull on the injection PKR to "pack off" more. Released from injection PKR and puled up and set test PKR just above. Pressured up on injection PKR to 1000#, lost all pressure within 10 seconds. Pull up test PKR to above the perms and pressure up to 1000# on the backside, held good. Release test PKR and RIH again to latch onto injection PKR and release it. Start POOH w/ both PKR's.

TOH w/ injection PKR and test PKR and 2-7/8" tbg.

TIH w/ 40 jts of 2-7/8" tbg, new injection PKR, and new test PKR, sdon.

Travel time

Report Start Date: 1/8/2013

Com

CREW TRAVEL

SAFETY MTG, REVIEW JSA'S AND TENET, CALIPER 2 7/8" ELEVATOR.

CHECK WELL PRESS=0#, OPEN WELL SLITE BLOW.

CONTINUE TIH W/7" HS INJ PKR W/7" HD TEST PKR ON 157 JTS WS, SET KS PKR @ 4951', AND SET TEST PKR @ 4948'.

TEST KS PKR TO 1650# FOR 30 MINS GOOD NO LOSS.

RELEASE HD TEST PKR @ 4948' AND TOH LD 100 JTS WS.

CREW LUNCH, REVIEW JSA'S

CONTINUE TOH LD 2 7/8" WS AND HD TEST PKR.

MOVE OUT 2 7/8" WS AND MOVE IN 2 7/8" L-80 RYT WRAP OD W/FIBERLINE ID FL-11 CONNECTION AND 2 3/8" L-80 FL-11 CONNECTIONS SCC FIBERLINE TBG

TIH EV OIO TOOL 6 7/8" OD X 2 7/8", 4-JTS 2 7/8" WYP WRAP OD AND FIBERLINE ID, 2 7/8" PIN 2 7/8" TRANSITION SUB, 2 7/8" PIN 2 3/8" BOX XO, 7.73' X 2 3/8" SUB, H-2 DUAL PKR 5.33' X 6.00" OD, 2 3/8" X 7.45' SUB, XO 2 3/8" 8RD X .50' BOX CHANGE OVER, 1.56" R FRO-FILE INLINE, 30 JTS 2 3/8" FIBERLINE TBG. NOTE:

END OF BOTTOM PKR AS PUMP OUT DIS, TOP PKR AS 1.43" BLANKEN PLUG INSTALLED.

SHUT IN WELL AND SHUT DOWN

PREP TO CONTINUE TIH WITH HYDRO-7 DUAL PKR

Report Start Date: 1/9/2013

Com

CREW TRAVEL

SAFETY MTG, REVIEW JSA'S AND TENET, CALIPER 2 3/8" ELEVATOR.



# Summary Report

**Completion****Complete****Job Start Date: 11/21/2012****Job End Date: 3/19/2013**

Well Name <b>CENTRAL VACUUM UNIT 273</b>		Lease <b>Central Vacuum Unit</b>	Field Name <b>Vacuum</b>	Business Unit <b>Mid-Continent/Alaska</b>	
Ground Elevation (ft) <b>3,990.00</b>	Original RKB (ft) <b>4,008.50</b>	Current RKB Elevation <b>4,008.50, 10/27/2012</b>		Mud Line Elevation (ft)	Water Depth (ft)

Com	
CHECK WELL PRESS=0#, OPEN WELL SLITE BLOW. ADJUSTED TONGS TO OPTIMUM TORQUE.	
CONTINUE TO PU 117 JTS OF 2 3/8" FIBERLINE TUBING W/ TURNED DOWN COLLARS, 10', 4', 2' X 2 3/8" FIBERLINED SUBS, 1 - JTS 2 3/8" FL, 1 - SS TRANSITION NIPPLE TO PLACE DUAL HYDRO II PKR @ 4811.45.	
LUNCH BREAK	
MI 2 3/8" FIBERLINE TUBING FOR SHORT STRING AND TALLEY	
WAIT ON VETCO GRAY TO HELP LAND LONG STRING IN WELL. AND INSTALL BPV AFTER SETTING PACKER. STARTED TO RAIN HARD. SDFD. SECURED WELL.	
CREW TRAVEL	
Report Start Date: 1/10/2013	
Com	
CREW TRAVEL	
SAFETY MTG, REVIEW JSA'S AND TENET #10, CALIPER 2 3/8" ELEVATOR.	
CHECK WELL PRESS=0#, OPEN WELL SLIGHT BLOW.	
PREP TO RUN IN W/ TUBING HANGER ON LONG STRING. HUNG TUBING AND SECURED HANGER TO WELL HEAD. PRESSURE TESTED SLICK SKIRT O/O TOOL SEALS TO 500 PSI, PRESSURE BLED OFF WITH 5 MIN. TESTED AGAIN TO 500 PSI, LEAKED OFF WITH IN 5 MINS. PUT IN ANOTHER TRANSITION .70 BELOW TBG LANDING HANGER, LANDED HANGER, TESTED SEALS AGAIN, SAME RESULTS, COULD NOT GET SEALS TO TEST.	
PULL OUT OF HOLE WITH 1 - 2 3/8" FL TBG, 2 - TRANSITIONS, 2', 4', 10' FL SUBS, 147 - JTS 2 3/8" FL, DUAL PACKER, 4 JTS OF 2 7/8" RYTE-WRAP TUBING. FOUND LOWER PACKER RUBBER ELEMENT WITH CUT ON IT AND THE O/O TOOL SEAL LOOKED LIKE IT HAD A CUT AROUND UPPER SEAL. SENT PACKER TO GET REDRESSED, PREP TO RUN IN AGAIN TOMORROW. SECURED WELL, SDFD	
CREW TRAVEL	
Report Start Date: 1/11/2013	
Com	
CREW TRAVEL	
HELD SAFETY MTG, REVIEW JSA'S AND TENET #1, CALIPER 2 7/8" ELEVATOR	
WAITED ON PEAK COMPLETION TO DRING OUT, PKR WAS NOT GOING TO BE READY TILL AFTER LUNCH, SHUT IN WELL AND SHUT DOWN HIGH WINDS.	
CREW TRAVEL	
PREP TO RUN LONG STRING AND UPPER PKR	
Report Start Date: 1/14/2013	
Com	
CREW TRAVEL	
SAFETY MTG, REVIEW JSA'S AND TENET, CALIPER 2 7/8" ELEVATOR AND 2 3/8"	
CHECK WELL PRESS=0#, OPEN WELL SLITE BLOW	
TIH W/ O/O TOOL 5 7/8" OD X 2 7/8", 4-JTS 2 7/8" WYP WRAP OD AND FIBERLINE ID, 2 7/8" X 2.00' WYP WRAP TBG SUB FIBERLINE ID, 2 7/8" PIN 2 7/8" TRANSITION SUB, 2 7/8" PIN 2 3/8" BOX XO, 7.73' X 2 3/8" SUB, H-2 DUAL PKR 5.33' X 6.00" OD, 2 3/8" X 7.45' SUB, XO 2 3/8" 8RD X .50' BOX CHANGE OVER, 1.56" R FRO-FILE INLINE, 30 JTS 2 3/8" FIBERLINE TBG, LD 1 JTS 2 7/8" L-80 WYP WRAP TBG BAD, WOULDN'T TORQ UP.	
CREW LUNCH, REVIEW JSA'S	
CONTINUE TIH W/ 2 3/8" L-80 INJ TBG, DRIFT EACH STAND. LD 7 JTS BOX END BAD WOULDN'T TORQ UP, FIBERLINE ID FLARED..	
PU 7 JTS TO REPLACE BAD JTS. 148 JTS 2 3/8" L-80 FIBERLINE TBG IN HOLE	
SPACE OUT AND PU 2 3/8" L-80 FIBERLINE SUBS 2.00', 4.00', 10.00' TBG SUBS, AND 1/2 MOON HANGER, SET 6 POINTS ON SEALS, STABILIZES 1/2 MOON HANGER IN WELL HEAD	
TEST SEAL ASSEMBLY TO 650# HELD GOOD FOR 7 MINS AND LEAKED OFF TO 400# IN 10 MINS. CALLED AND TALKED TO DEAN WITH PEAK COMPLETIONS AND LARRY BIRKELBACH, OKAY TO GO AHEAD AND PRESSURE UP TO 3,500# AND ATTEMPT TO SET PKR AND TEST SEALS PRESSURE TO 1000# LOST 400# IN 5-MINS PRESSURE UP TO 1500# LOST 750# IN 5 MINS, PRESSURE UP TO 2000# LOST 500# IN 2 MINS, PRESSURE UP TO 2500# LOST 1700# IN 6-MINS. PRESSURE UP TO 3300# LOST 1800# IN 5-MINS.	
SHUT IN WELL AND SHUT DOWN	
PREP TO PULL PKR	
Report Start Date: 1/15/2013	
Com	
CREW TRAVEL	
SAFETY MTG, REVIEW JSA'S AND TENET, CALIPER 2 3/8" ELEVATOR AND 2 7/8" ELEVATOR	
CHECK WELL PRESS=0#, OPEN WELL NO BLOW,	
ATTEMPT TO LOAD BS W/ 10# BRINE WATER, WAITED ON BRINE FLUID, PUMP 200 BBLs WOULD'T LOAD, PRESSURE UP ON TBG TO 3500# LEAKED OFF TO 250# IN 10-MINS, ATTEMPT ONCE MORE AND HAD SAME RESULTS.	
BACK OFF ON STABILIZING PINS ON 1/2 MOON HANGER AND SHEAR PKR @ 30K OVER PKR RELEASED. CHANGE OUT TOOLS. LD 1/2 MOON HANGER AND TBG SUBS AND 1-JT 2 3/8" L-80 FIBERLINE TBG.	
TOH W/ 147 JTS JTS 2 3/8" L-80 INJ TBG AND LD DUAL PKR ASSEMBLY, BOTTOM RUBBER ON PKR CUT, SEALS ASSEMBLY LOOKED HAD A SLITE WEAR ON RUBBER, NOTICED PKR WAS DRESSED WRONG AND ASSEMBLY WAS RUN WRONG.	
CREW LUNCH, REVIEW JSA'S.	



# Summary Report

**Completion****Complete****Job Start Date: 11/21/2012****Job End Date: 3/19/2013**

Well Name CENTRAL VACUUM UNIT 273		Lease Central Vacuum Unit	Field Name Vacuum	Business Unit Mid-Continent/Alaska	
Ground Elevation (ft) 3,990.00	Original RKB (ft) 4,008.50	Current RKB Elevation 4,008.50, 10/27/2012		Mud Line Elevation (ft)	Water Depth (ft)

Com					
TIH WITH 2-STANDS OF 2 3/8" L-80 FIBERLINE AND LD 4 JTS, 2 BOTTOM JTS BAD. CHANGE OUT TOOLS WAITING ON WORK STRING OFF LOAD 2 7/8" WS, TALLY TBG, PU RH ON 2 7/8" WS 60 JTS EOT @ 1935' SHUT IN WELL AND SHUT DOWN CREW TRAVEL PREP TO CONTINUE PU WS AND PULL BOTTOM PKR					
Report Start Date: 1/16/2013					
Com					
CREW TRAVEL SAFETY MTG, REVIEW JSA'S AND TENET, CALIPER 2 7/8" ELEVATOR, HAZARD HUNT. CHECK WELL PRESSURE 0#, OPEN WELL CONTINUE TIH PU 2 7/8" WS, 154 JTS IN 10' OUT LATCH ONTO PKR @ 4952' AND PULLED 10K OVER PKR FREE. TOH WITH 7" ARROW SET 1X SET PKR, O/O TOOL HAS DEEP CUTTS ON TOP, MIDDLE RUBBER ON PKR SMALL CUTS CREW LUNCH, REVIEW JSA'S TIH NEW ARROW SET 1X, WITH CERAMIC DIS (KNOCK OUT DIS) 7" X 7.42', O/O TOOL 1.45', 2.00' X 2 7/8" TBG SUB, 7" HD X 6.50' TEST PKR..ON 100 JTS 2 7/8" WS. SHUT IN WELL AND SHUT DOWN, JEAN MASON, ON LOCATION VISITED WITH CREW ABOUT STOP AND LATCH PROCEDURE CONTINUE RUNNING IN HOLE WITH PKR SET PKR @ 4959' W/ 154 JTS IN, SET TEST PKR HD @ 4944', TEST TO 1550# GOOD NO LOST. RELEASE PKR, TOH LD 42 JTS WS SHUT IN WELL AND SHUT DOWN CREW TRAVEL PREP TO LD WS, RUN DUAL PKR ASSEMBLY, LONG STRING.					
Report Start Date: 1/17/2013					
Com					
CREW TRAVEL SAFETY MTG, REVIEW JSA'S AND TENET, CALIPER 2 7/8" ELEVATOR. WELL PRESS=0#, OPEN WELL CONTINUE LD 2 7/8" WS, MOVE OUT WS. MIRU TUBESCOPE TECH, TIH W/ O/O TOOL 6-7/8" OD X 2 7/8", 4-JTS 2 7/8" WYP WRAP OD AND FIBERLINE ID, 2 7/8" X 2.00', and 10.00' WYP WRAP TBG SUBS FIBERLINE ID, 2 7/8" PIN 2 7/8" TRANSITION SUB, 2 7/8" PIN 2 3/8" BOX XO, 7.73' X 2 3/8" SUB, H-2 DUAL PKR 5.33' X 6.00" OD, 2 3/8" X 7.45' SUB, XO 2 3/8" 8RD X .50' BOX CHANGE OVER, 1.56" R FRO-FILE INLINE, 44 JTS 2 3/8" FIBERLINE TBG, EOT @ 1519'. WHILE TIH WITH TBG, TBG STACKED OUT, STAND BACK 1 STAND AND PULLED 1 STAND AND ATTEMPT TO TIH, STACKED OUT AGAIN. 40 JTS IN. TOH STAND BACK 21 STANDS, LD BHA. FOUND BOTTOM SLIP ON PKR HAD WORKED OUT OF ITS SLOT AND BROKE TOP PART OF SLIP GAGE CREW LUNCH, REVIEW JSA'S. TOH LD 2 7/8" FIBERLINE TBG WITH WYP WRAP, 2', 10' AND 4 JTS, SEAL ASSEMBLY. MOVE OUT 2 3/8" FIBERLINE TBG, NEW, TIH WITH 2 3/8" FIBERLINE TBG 154 JTS TOH LD 56 JTS 2 3/8" FIBERLINE TBG SDFN CREW TRAVEL PREP TO LD TBG AND RUN TOOLS TO DRESS 7" CSG, PU REDRESS DUAL PKR AND RUN NEW 2 3/8" FIBERLINE TBG.					
Report Start Date: 1/18/2013					
Com					
CREW TRAVEL SAFETY MTG, REVIEW JSA'S AND TENET #8, CALIPER 2 3/8" AND 2 7/8" ELEVATOR. WELL PRESS=0#, OPEN WELL LD MACHINE OPERATOR FLAT ON HWY 238, CONTINUE TOH LD 2 3/8" FIBERLINE TBG. MOVE OUT FIBERLINE TBG AND MOVE IN 75 JTS 2 7/8" WS. TALLY WS PU 6 1/4" X 5.86; SWEDGE, XO 3 15/16" OD X 1.04', 3 5/8" OD X 4.63' BUMPER SUB, 3 5/8" OD X 7.56' JARS, TS. 6 1/4" SWEDGE WOULDN'T GO THRU WELL HEAD, LD SWEDGE. CREW LUNCH, REVIEW JSA'S,					



# Summary Report

**Completion****Complete****Job Start Date: 11/21/2012****Job End Date: 3/19/2013**

Well Name <b>CENTRAL VACUUM UNIT 273</b>		Lease <b>Central Vacuum Unit</b>	Field Name <b>Vacuum</b>	Business Unit <b>Mid-Continent/Alaska</b>	
Ground Elevation (ft) <b>3,990.00</b>	Original RKB (ft) <b>4,008.50</b>	Current RKB Elevation <b>4,008.50, 10/27/2012</b>		Mud Line Elevation (ft)	Water Depth (ft)

Com

PU 6 1/4" BIT ON BHA, 6 1/4" BIT WENT THRU WELL HEAD NO PROBLEMS.  
COULDN'T LOCATE 6 1/8" SWAGE WITH OTHER CONTRACTOR, 6 1/4" SWEDGE TAKEN IN TO HAVE TURN DOWN TO 6 1/8".

PU TIH WITH 74 JTS 2 7/8" WS, TOH STAND BACK WS.

SHUT IN WELL AND SHUT DOWN

CREW TRAVEL

PREP TO RUN 6 1/8" SWEDGE AND RUN DUAL PKR ASSEMBLE

CHECKED WITH VETCO GRAY (GARY WHITE) 7" 23# CSG HANGER MIN ID 6.250"

**Report Start Date: 1/21/2013**

Com

CREW TRAVEL

SAFETY MTG, REVIEW JSA'S AND TENET #1, CALLIPER 2 7/8" ELEVATOR.

CHECK WELL PRESSURE 0#, OPEN WELL

PU BHA

PU 6 1/8" X 3.00; SWEDGE, XO 3 15/16"OD X 1.04', 3 5/8"OD X 4.63' BUMPER SUB, 3 5/8"OD X 7.56' JARS, 3- 3 1/2" DC, TIH WITH 6 1/8" SWAGE ON 2 7/8" WS74 JTS IN TO 2502', DIDN'T FILL ANYTHING GOING IN WITH 6 1/8" SWAGE, TOH LD WS & TOOLS.

MOVE OUT WS AND MOVE IN NEW 2 3/8" FIBERLINE TBG AND 2 7/8" FIBER-LINE WITH WYP WRAP. RACK AND TALLY TBG.

PU O/O TOOL 4 1/2" X X 1.60', 4-JTS 2 7/8" X 129.48' WYP WRAP OD FIBERLINE ID

CREW LUNCH, REVIEW JSA'S

PU DUAL PKR WITH SUB IN 2 3/8" X 9.25' X 1.938"ID, PKR 5 11/16"OD X 5.33', IN SUB 2 3/8" X 1.938"ID X 10.03'.  
SHORT STRING END BELOW PKR AS 1.43" BLANKEN PACKED WITH GREASE. , SUB IN ABOVE PKR LONG STRING SIDE PRO-FILE 1.56" (F)  
PU 2 3/8" FIBER-LINE TBG WITH TURN DOWN CALLORS 50 JTS EOT @ 1788'.

SHUT IN WELL AND SHUT DOWN

CREW TRAVEL

PREP TO CONTINUE PU LONG STRING  
UPPER PKR SETTING DEPTH @ 4796'

**Report Start Date: 1/22/2013**

Com

Travel time

Review JSA's, tenet #2, hazard i.d. wheel #2, e-colors #2, caliper tbg elevators

TIH w/ 97 jts of 2-3/8" fiberline tbg and hydro-II PKR

Tried to sting into bottom PKR w/ ryt-wrapped 2-7/8" tbg. Had vetco gray put on tbg hanger. First time put 2 points onto bottom PKR and tried testing o/o tool, pumped 25 bbls and didn't set. Second time put 4 points on o/o tool, pumped 25 bbls and didn't set. Third time put o/o tool in neutral and pumped 25 bbls, didn't set. Took off tbg hanger and PU one extra jt of 2-3/8" fiberline tbg and RIH to put extra weight on o/o tool. Fourth try put 9 points on o/o tool and pumped 15 bbls, didn't hold. Fifth time put 9 points on o/o tool and rotated tbg back and forth while stinging into bottom PKR, pumped 15 bbls and held. Tested down the tbg to test the o/o tool up to 250# and held good, then pressured up to 500# and held good. Bled off pressure and went to pull up on tbg but PKR set while testing. Had to shear the PKR.

TOH w/ 2-3/8" tbg and hydro-II PKR

Travel time

**Report Start Date: 1/23/2013**

Com

Travel time

Review JSA's, tenet #3, hazard i.d. wheel #3, e-colors #3, caliper tbg elevators

Had new PKR hot shot out to location. Both PKR slips were pointed down so called Peak Completions Rep Brian Fitzhugh to discuss with him. He said that it would be okay to run the PKR even with both slips facing down.

Switch out plug from old PKR to new hydro-II PKR

TIH w/ hydro-II PKR, 4 jts of 2-7/8" ryt-wrapped tbg, and 146 jts of 2-3/8" fiberlined tbg

Sting into bottom PKR w/ 8 points. Tried to load tbg but didn't hold. PU on tbg and sting into PKR again w/ 8 points, pressured up to 50# but didn't hold during test. PU tbg and sting in w/ 6 points next time, pressured to 50# and held so pinned in tbg hanger. Tried pressuring up to set PKR but only got to 500# and wouldn't go any higher, so bled off pressure. PU and sting in once more w/ 6 points, pinned in tbg hanger, and pressured up to 1500# to set PKR. Lost pressure from 1500# to 500#. pressured up again to 2000#, dropped to 250#. Pressured up once more to 2000# and pressure dropped to 700# fairly quickly, but once it hit 700# it dropped very slowly after that.

Pressured up on backside to 1000# to test PKR and held good. Sdon

Travel time

**Report Start Date: 1/24/2013**

Com

Travel time

Review JSA's, tenet #4, hazard i.d. wheel #4, e-colors #4, caliper tbg elevators

TOH w/ hydro-II PKR, 4 jts of 2-7/8" ryt-wrapped tbg, and 146 jts of 2-3/8" fiberlined tbg

Pick up 2-7/8" WS and put onto pipe racks



# Summary Report

Completion  
Complete

Job Start Date: 11/21/2012

Job End Date: 3/19/2013

Well Name CENTRAL VACUUM UNIT 273		Lease Central Vacuum Unit	Field Name Vacuum	Business Unit Mid-Continent/Alaska	
Ground Elevation (ft) 3,990.00	Original RKB (ft) 4,008.50	Current RKB Elevation 4,008.50, 10/27/2012		Mud Line Elevation (ft)	Water Depth (ft)

TIH w/ o/o tool and 120 jts of 2-7/8" WS and sdon
Travel time
Report Start Date: 1/25/2013
Com
Travel time
Review JSA's, tenet #5, hazard i.d. wheel #5, e-colors #5, caliper tbg elevators
BOP, Fire, Spill, Evacuation Drills
TIH w/ 34 jts of 2-7/8" tbg and latch onto the bottom PKR
TOH w/ 154 jts of 2-7/8" tbg and bottom PKR
TIH w/ 154 jts of 2-7/8" tbg and a test PKR and set PKR @ 4951'
Pump 50 bbls down the tbg into the bottom perf zone to see if it communicates with the top perf zone. Pumped @ .5 - 1 BPM for 2 hours and saw no communication between the two perf zones. Final pumping pressure was 1750#, after 10 mins it fell to 1280#, then bled off rest of pressure.
TOH w/ 76 jts of 2-7/8" tbg, laying down tbg
Travel time
Report Start Date: 1/28/2013
Com
Travel time
Review JSA's, tenet #8, hazard i.d. wheel #, e-colors #8, caliper tbg elevators
TOH w/ 78 jts of 2-7/8" tbg and test PKR, laying down all tbg
Wait on tbg x-overs to be delivered by Peak Completions out of Midland
TIH w/ DLH 7K PKR, 6 jts of 2-3/8" TK-70 ryt-wrapped tbg, Hydro-II PKR, and 141 jts of 2-3/8" fiberlined tbg and sdon
Travel time
Report Start Date: 1/29/2013
Com
Travel time
Review JSA's, tenet #9, hazard i.d. wheel #9, e-colors #9, caliper tbg elevators
Retrieve 5 jts of 2-3/8" fiberlined tbg from another location and transport over to CVU #273. TIH w/ 5 jts of 2-3/8" fiberlined tbg and 14' of fiberline subs.
Land tbg hanger and space out. Have bottom PKR (DLH PKR) @ 4959' and have top PKR (Hydro-II PKR) @ 4773'
Pressure up on tbg to set both the DLH 7K PKR and the Hydro-II Pkr (DLH @ 4959' and Hydro-II @ 4773'). Pressured up to 650#, then to 800# and had tbg pressure bleed off both times to 400# within 3 mins. Pressured up to 1000# and left for 5 mins, came back and pressure was at 0#. Did a pull test on the PKR string and pulled 11 pts over, and string held. Pressured up to 2000# twice to make sure both PKRs were set.
Pressured up on backside to test top PKR, pressured up to 500# and held good. While pressuring up on backside, tbg pressure was @ 0#, but once csg valve was closed @ 500#, the tbg pressure rose to 400# and held good. Opened csg valve to bleed off pressure, and tbg pressure also bled off slowly, but gradually. Pressured up on tbg to see if there was any communication to the csg, and none was seen. Pressured up on the csg to 500# one more time to see if the tbg pressure would rise again, and tbg did not gain pressure. Sdon.
Shut down due to high winds
Travel time
Report Start Date: 1/30/2013
Com
Travel time
Review JSA's, tenet #10, hazard i.d. wheel #10, e-colors #10, caliper tbg elevators
RU Petroplex pump truck and pressure up to attempt to make sure both PKR's have set. Pressured up to 500# and held for 3 mins, then pressure up to 1000# for 3 mins, then to 1500# for 5 mins, then to 2000# for mins, then to 2250# for 3 mins. At the 3 min mark @ 2250#, the bottom pump out plug on the bottom PKR blew out. Pumped down the tbg @ 1 BPM for 15 mins. Once finished pumping, tbg went on vaccum.
Called engineers in Midland, TX to discuss what occurred
While pumping down tbg, noticed BOP had slight drip. Switched out the 2-3/8" offset rams with new ones and tested. Pressured up on the csg valve on the rev unit to 1000#, leaked off to 900# in 10 mins. Switched the hose from the csg valve to the tbg valve and presured up again to 1000#, leaked again down to 900# in 10 mins. Hooked up Petroplex pump truck to csg valve on wellhead and pressured up to 1000#, leaked off 90# in 5 mins, and 340# in 25 mins. RD Petroplex.
RU Gray Wireline and RIH w/ 1.43 R blanking plug and set in profile nipple on top of bottom PKR @ 4953'. Took 2.2 bbls to load the tbg. Pressure up to 1000#, leaked off to 500# in 5 mins, and kept leaking off. RD Gray Wireline.
TOH w/ jts of 2-3/8" fiberlined tbg, Hydro-II PKR, 6 jts of 2-3/8" fiberlined ryt-wrapped tbg, and DLH 7K PKR.
Travel time
Report Start Date: 1/31/2013
Com
Travel time
Review JSA's, tenet #1, hazard i.d. wheel #1, e-colors #1, caliper tbg elevators
TOH w/ 81 jts of 2-3/8" fiberlined tbg, Hydro-II PKR, 6 jts of 2-3/8" fiberlined ryt-wrapped tbg, and DLH 7K PKR.
Bop, Fire, Spill, and Evacuation Drills





# Summary Report

Completion  
Complete

Job Start Date: 11/21/2012

Job End Date: 3/19/2013

Well Name CENTRAL VACUUM UNIT 273		Lease Central Vacuum Unit	Field Name Vacuum	Business Unit Mid-Continent/Alaska	
Ground Elevation (ft) 3,990.00	Original RKB (ft) 4,008.50	Current RKB Elevation 4,008.50, 10/27/2012		Mud Line Elevation (ft)	Water Depth (ft)

Com					
Wait on orders					
Wait on Peak Completions to deliver two RBPs					
TIH w/ RBP on 74 jts of 2-3/8" tbg then sdon					
Travel time					
Report Start Date: 2/1/2013					
Com					
travel time					
hsm, discuss tenet #1 discuss hazard id wheel 31, discuss e-colors 31, review jsa's and sop's calipoer tbg. elevators and document on daily sheet					
press. 0# complet rih w/ tbg. rbp to 4500' set plug releaset					
load csg. 40 bbls press. to 500# held 30 min no loss bled off					
pooh and l.d. 4000' of stood 500' in derrick					
pu 2nd rbp rih and set 500' set release					
press. to 5000# held bled off					
rig down					
travel time					
Report Start Date: 3/4/2013					
Com					
road rig to location spot offload tanks, reverse pump pu/ld/ rog					
travel time					
Report Start Date: 3/5/2013					
Com					
crew travel					
review jsa's, ru workover rig, working around pressure, picking up tubing					
ru workover rig, move in workstring, talley workstring,					
nu bop					
check tubing elevators for correct size, and document, gih with 2 7/8 workstring and latch on/to rpb and load and test bop, blinds and rams, held					
release rbp at 515' and pooh with tubing and rbp					
go in hole with retrieving head and latch onto rpb @ 4495', release rbp,					
pooh with workstring and lay down workstring and rbp					
change out pipe rams to off set 2 3/8 pipe rams, secure well					
crew travel					
Report Start Date: 3/6/2013					
Com					
crew travel					
review jsa's, check tubing elevators for correct size,					
gih with 7 inch rbp, and set at 30' load and test off set rams and bop					
move out workstring and move in injection tubing, talley pipe, check down hole packers and packer profiles, caliber all equipment					
mi ru hydr test tubing testers, start in hole with dual packer assembly, 2 3/8 L-80 fiberline and rite wrap tested to 3000 psi, started on J-55 fiberline tubing and test tools started breaking liner in pipe, rd down testers, continue in hole with packers and 2 3/8 J-55 tubing, drifting pipe, secure well					
crew travel					
Report Start Date: 3/7/2013					
Com					
crew travel					
review jsa's, check tubing elevators for correct size					
finish gih with 34 jts 2 3/8 L-80 fiberline tubing, 112 jts 2 3/8 J-55 fiberline tubing, 4' 2 3/8 eue L-80 landing sub, 7" nickel plated hydro-11 Dual packer, 6' 2 3/8 nickel plated sub, 6 jts 2 3/8 rite wrap L-80 plastic coated tubing, 2 3/8 x 2 7/8 x-over, 7" hydro 1 packer, 2 7/8 x 2 3/8 x-over, 6' 2 3/8 nickel plated sub, 2 3/8 1.43 R nipple, pump out plug, top packer element @ 4754' bottom packer element 4955'					
loaded tubing with 13 bbls, tested pump out plug and tubing to 500 psi, leaked in 30 seconds, tried again, leaked, pressured to 750 psi, isolated pump and test pump and lines to 750 psi held, check top o-ring on landing mandrel, looked good, loaded and set packer s 1700 psi to set packer, loaded and tested casing to 500 psi, held, loaded tubing and still leaked, looked like top packer ok and bottom packer leaked, pump out pump out plug at 2700 psi,					
shear both packers, let well equalize					
pooh with bha, secure well, shut down until saturday, due to packers to be redressed					
crew travel					
Report Start Date: 3/8/2013					
Com					
suspended operations due to injection packers need to redressed					
Report Start Date: 3/9/2013					
Com					
crew travel					



# Summary Report

Completion

Complete

Job Start Date: 11/21/2012

Job End Date: 3/19/2013

Well Name CENTRAL VACUUM UNIT 273		Lease Central Vacuum Unit	Field Name Vacuum	Business Unit Mid-Continent/Alaska	
Ground Elevation (ft) 3,990.00	Original RKB (ft) 4,008.50	Current RKB Elevation 4,008.50, 10/27/2012		Mud Line Elevation (ft)	Water Depth (ft)

Com
review jsa's
wait on statis of injection , found out that the packers are not ready, shut down
crew travel
Report Start Date: 3/11/2013
Com
crew travel
review jsa's
wait on packers to arrive on location
gih with same weatherford packer system and drift all tubing going in hole,gih with 34 jts 2 3/8 L-80 fiberline tubing,112 jts 2 3/8 J-55 fiberline tubing, 4' 2 3/8 eue L-80 landing sub, 7"nickel plated hydro-11Dual packer,6' 2 3/8 nickel plated sub, 6 jts 2 3/8 rite wrap L-80 plastic coated tubing, 2 3/8 x 2 7/8 x-over, 7" hydro 1 packer, 2 7/8 x 2 3/8x-over, 6' 2 3/8 nickel plated sub, 2 3/8 1.43 R nipple, pump out plug, top packer element @ 4754' bottom packer element 4955'
land tubing in hanger, load and test tubing to 500 psi, held, pressured up to 1000 psi, looked like packer set, lost to 400 psi in 5 minutes, pressured up to 1000 psi, lost 600 psi in 3 minutes, pressured up to 2100 psi, lost 1600 psi in 2 minutes, repressured up to 2100 psi, went to 0 in 1 minute, load and test backside to 500 psi, held, pressured up on tubing to 2300 psi, leaked off in 30 seconds, pressure up and blew out pump out plug at 3000 psi. secure well,
crew travel
Report Start Date: 3/12/2013
Com
crew travel
review jsa's, check tubing elevators for correct size and document
mi ru Diamond D slickline, gih with 1.43 r plug and set in profile below bottom packer, seat plug and kick in reverse pump , at .5 bpm @ 400 psi, bottom packer leaking, pooh with seating tool , had to cut slickline due to kink in line , tie on to tubing and pumped down tubing 1/2 bpm at 400 psi to see if comunicated, didn't communicated, gih with punch and fishing tool and pull blanking tool, rd slickline
pick up on tubing and release packers,
pooh , inspecting fiberline tubing as we pull out of hole, found liners bad in some of the tubing, secure well
crew travel
Report Start Date: 3/13/2013
Com
crew travel
review jsa's, check tubing elevators for correct size and document
gih with 112 jts 2 3/8 J-55 fiberline tubing
pooh laying down tubing on racks
move out old tubing and move in new fiberline tubing, talley same and all 2 3/8 L-80 in derrick, secure well
crew travel
Report Start Date: 3/14/2013
Com
shut down waiting on packers to be repaired
Report Start Date: 3/15/2013
Com
crew travel
check tubing elevators for correct size, review jsa's
gih weatherford packer system and drift all tubing going in hole,gih with 34 jts 2 3/8 L-80 fiberline tubing,111 jts 2 3/8 J-55 fiberline tubing, 2 3/8 tranistion sub,1 jts 2 3/8 I-80 ipc joint, 4' 2 3/8 eue L-80 landing sub, 7"nickel plated hydro-11Dual packer,6' 2 3/8 nickel plated sub, 6 jts 2 3/8 rite wrap L-80 plastic coated tubing, 2 3/8 x 2 7/8 x-over, 7" hydro 1 packer, 2 7/8 x 2 3/8x-over, 6' 2 3/8 nickel plated sub, 2 3/8 1.43 R nipple, pump out plug, top packer element @ 4744' bottom packer element 4948'(NOTE: all tubing was run and torqued by Permian Pipe spec's)(Tuboscope drifted and inspected all 2 3/8 fiberline L-80 tubing, checked packer elements with baker hugh's cbl dated 11/29/2012 to make sure packer elements are not in casing collars, changed out O-Ring in top Vetco Gray tubing landing head
load the tubing with 12 bbls water, pumped up to 1000 psi, saw blip on guage and noted the packers set, let set for 10 minutes, no pressure loss, continue up to 2000 psi, lost 300 psi in 20 minutes , tubing stablized at 1700 psi for 45 minutes, load backside with 32 bbls water and pressured up to 500 psi, held for 15 minutes, tubing stayed the same, bled all pressure off , looks like all packers are good to go,
redress bop , moving off set rams to the other side, (NOTE: long string set to the north side of the well head) set back pressure valve in long string side,
move in short string tubing and talley pipe
start in hole with J-LATCH and 1.56 profile F nipple on 2 3/5 J-55 fiberline tubing with turn down collars, drifting all tubing (NOTE: Permian fiberline ) secure well
crew travel
Report Start Date: 3/18/2013
Com
NOTIFIED MAXEY BROWN OCD ABOUT MIT TEST
crew travel
review jsa's , check tubing elevators for correct size and document,



# Summary Report

Completion  
Complete

Job Start Date: 11/21/2012

Job End Date: 3/19/2013

Well Name CENTRAL VACUUM UNIT 273		Lease Central Vacuum Unit	Field Name Vacuum	Business Unit Mid-Continent/Alaska	
Ground Elevation (ft) 3,990.00	Original RKB (ft) 4,008.50	Current RKB Elevation 4,008.50, 10/27/2012		Mud Line Elevation (ft)	Water Depth (ft)

Com

finish gih with J-latch and 1.56 F nipple on jts 148 2 3/8 J-55 fiberline tubing, tag hanger and space out, on short string side, landed with 1.43 R nipple in dual packer with wireline entry guide (south side of well head)

pick up on tubing and circ hole with packer fluid

land short string landing head on the south side of wellhead, right hand release with 6 points compression

install back pressure valve in both strings

nd bop

nu wellhead and pressure test wellhead TO 5000 PSI

PULL BACK PRESSURE VALVE

mi ru pro wireline slick line , gih with slickline spear and made several attempts to pierce the blanking plug, pooh and add more weight bars and gih and attempt to pierce blanking plug, pooh with piercing tool and caliber centralizer on tool. wireline ran wrong size in well, change out piercing tool and gih and punch blanking plug, pooh and gih and fish blaning plug

tie onto long string and blow out plug, secure well, prepare to run mit in the morning

crew travel

Report Start Date: 3/19/2013

Com

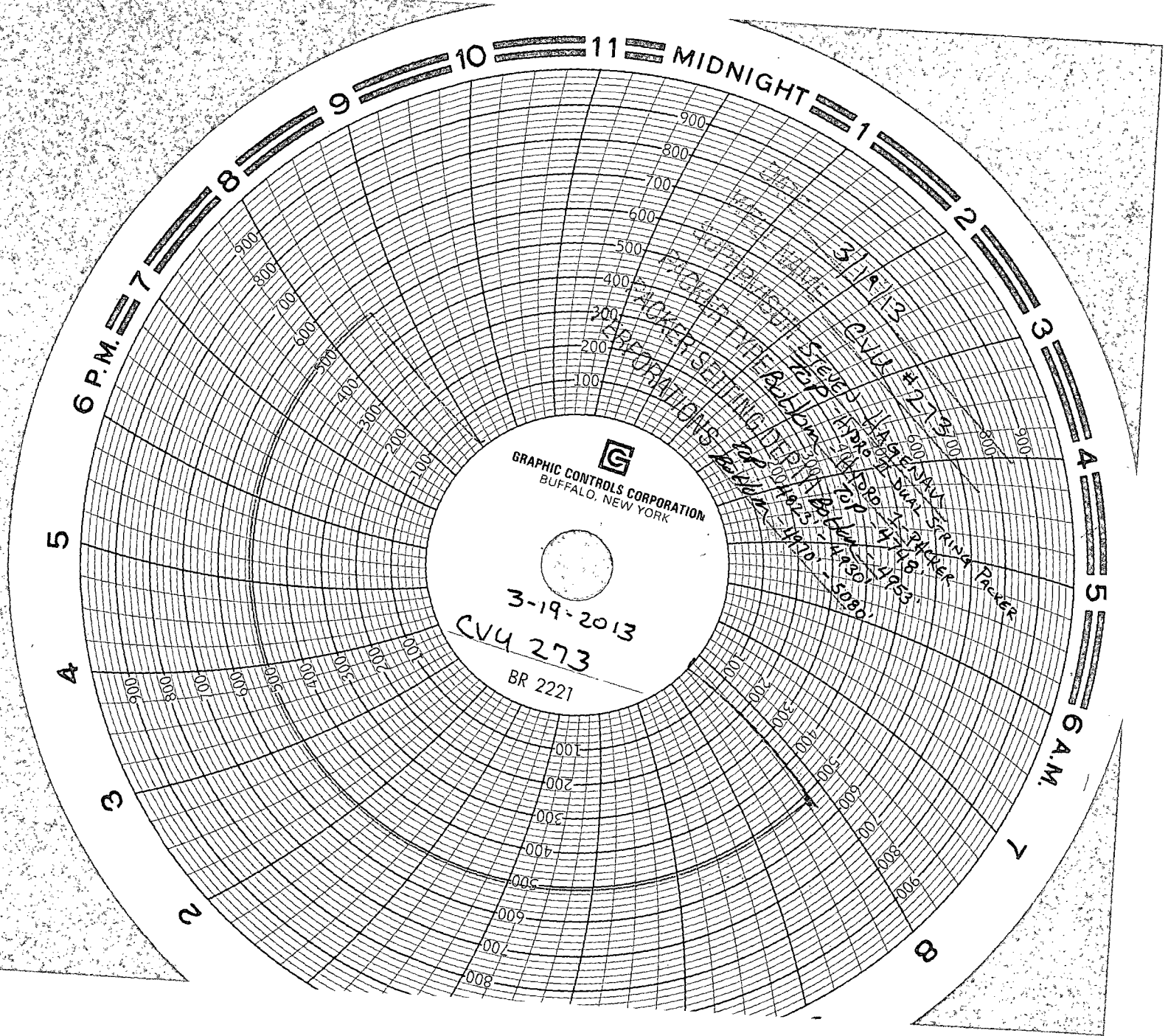
Travel time

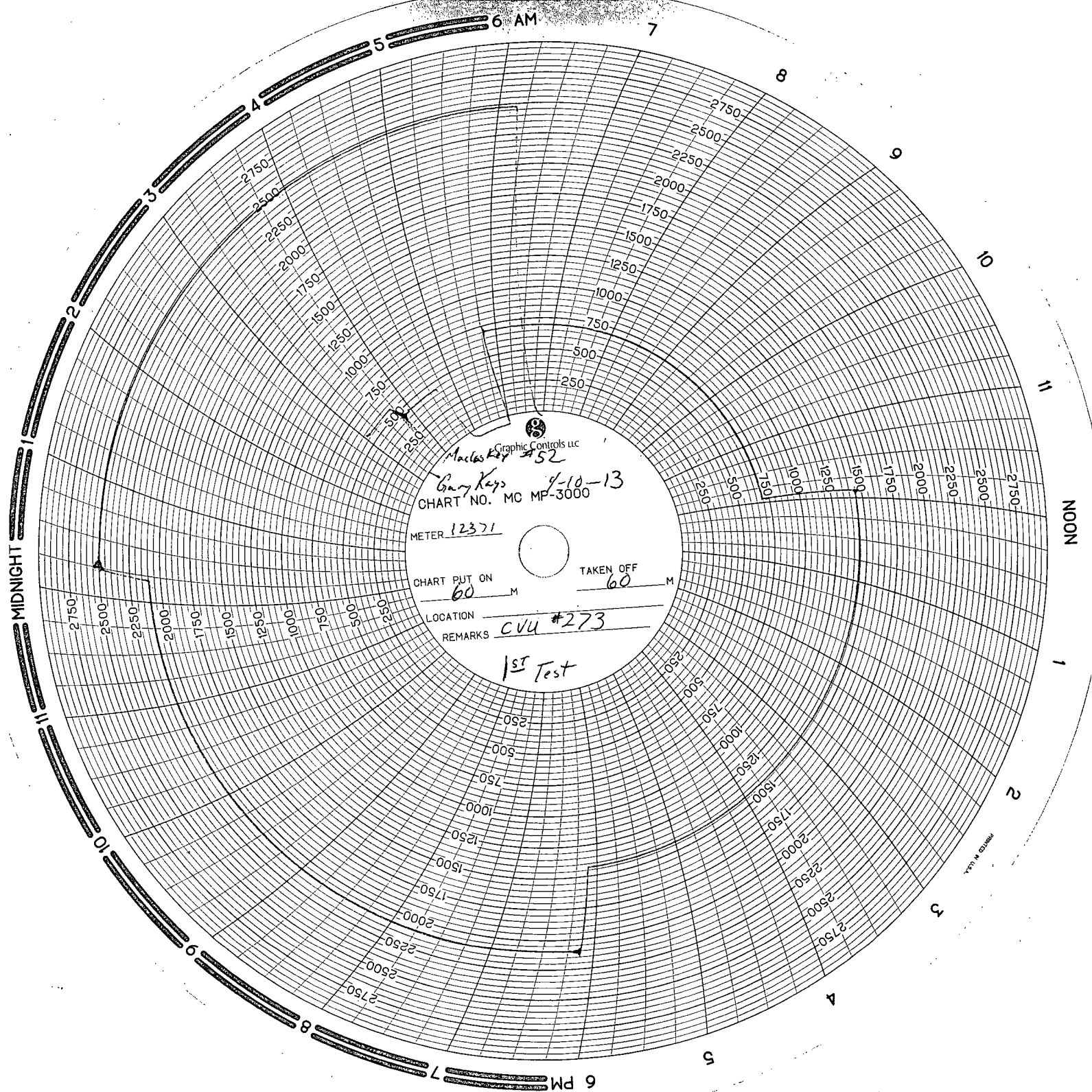
Review JSA's, tenet #9, hazard i.d. wheel #9, e-colors #9, caliper tbg elevators

Perform MIT test. Pressured up to 510#, held good for 30 mins.

Pump PKR fluid down 40 bbls down long string @ 2 bpm to 2300#, with the ISIP @ 1500#. Then pump 60 bbls down the short string @ 4 bpm to 1700#, went on vacuum for ISIP.

RD pulling unit and move to CVU #56





Graphic Controls LLC  
MacLachlan 452  
Gary Keys 4-10-13  
CHART NO. MC MF-3000  
METER 12371  
CHART PUT ON 60 M TAKEN OFF 60 M  
LOCATION CVU #273  
REMARKS 1st Test

