

Submit 1 Copy To Appropriate District  
Office  
District I - (575) 393-6161  
1625 N. French Dr., Hobbs, NM 88240  
District II - (575) 748-1283  
811 S. First St., Artesia, NM 88210  
District III - (505) 334-6178  
1000 Rio Brazos Rd., Aztec, NM 87410  
District IV - (505) 476-3460  
1220 S. St. Francis Dr., Santa Fe, NM  
87505

State of New Mexico  
Energy, Minerals and Natural Resources

Form C-103  
Revised July 18, 2013

OIL CONSERVATION DIVISION  
1220 South St. Francis Dr.  
Santa Fe, NM 87505

HOBBS OCD

NOV 25 2013

RECEIVED

<b>SUNDRY NOTICES AND REPORTS ON WELLS</b> (DO NOT USE THIS FORM FOR PROPOSALS TO DRILL OR TO DEEPEN OR PLUG BACK TO A DIFFERENT RESERVOIR. USE "APPLICATION FOR PERMIT" (FORM C-101) FOR SUCH PROPOSALS.)		WELL API NO. 30-02531816
1. Type of Well: Oil Well <input type="checkbox"/> Gas Well <input checked="" type="checkbox"/> Other INJECTION		5. Indicate Type of Lease STATE <input checked="" type="checkbox"/> FEE <input type="checkbox"/>
2. Name of Operator CHEVRON U.S.A. INC.		6. State Oil & Gas Lease No.
3. Address of Operator 15 SMITH ROAD, MIDLAND, TEXAS 79705		7. Lease Name or Unit Agreement Name VACUUM GLORIETA WEST UNIT
4. Well Location Unit Letter : B 51 feet from the NORTH line and 1588 feet from the EAST line Section 36 Township 17S Range 34E NMPM County LEA		8. Well Number 54
		9. OGRID Number 4323
		10. Pool name or Wildcat VACUUM; GLORIETA
11. Elevation (Show whether DR, RKB, RT, GR, etc.)		

12. Check Appropriate Box to Indicate Nature of Notice, Report or Other Data

NOTICE OF INTENTION TO:

PERFORM REMEDIAL WORK ☐ PLUG AND ABANDON ☐  
TEMPORARILY ABANDON ☐ CHANGE PLANS ☐  
PULL OR ALTER CASING ☐ MULTIPLE COMPL ☐  
DOWNHOLE COMMINGLE ☐  
CLOSED-LOOP SYSTEM ☐  
OTHER: ☐

SUBSEQUENT REPORT OF:

REMEDIAL WORK ☐ ALTERING CASING ☐  
COMMENCE DRILLING OPNS. ☐ P AND A ☐  
CASING/CEMENT JOB ☐

OTHER: ADD PERFS W/CHART

13. Describe proposed or completed operations. (Clearly state all pertinent details, and give pertinent dates, including estimated date of starting any proposed work). SEE RULE 19.15.7.14 NMAC. For Multiple Completions: Attach wellbore diagram of proposed completion or recompletion.

PLEASE FIND ATTACHED, REPORTS FOR WORK DONE FROM 10/31/2013 THROUGH 11/12/2013.

CHART RUN ON 11/12/2013 IS ATTACHED.

Spud Date:

Rig Release Date:

I hereby certify that the information above is true and complete to the best of my knowledge and belief.

SIGNATURE

*Denise Pinkerton*

TITLE: REGULATORY SPECIALIST

DATE: 11/21/2013

Type or print name DENISE PINKERTON

E-mail address: [leakejd@chevron.com](mailto:leakejd@chevron.com)

PHONE: 432-687-7375

For State Use Only

APPROVED BY:

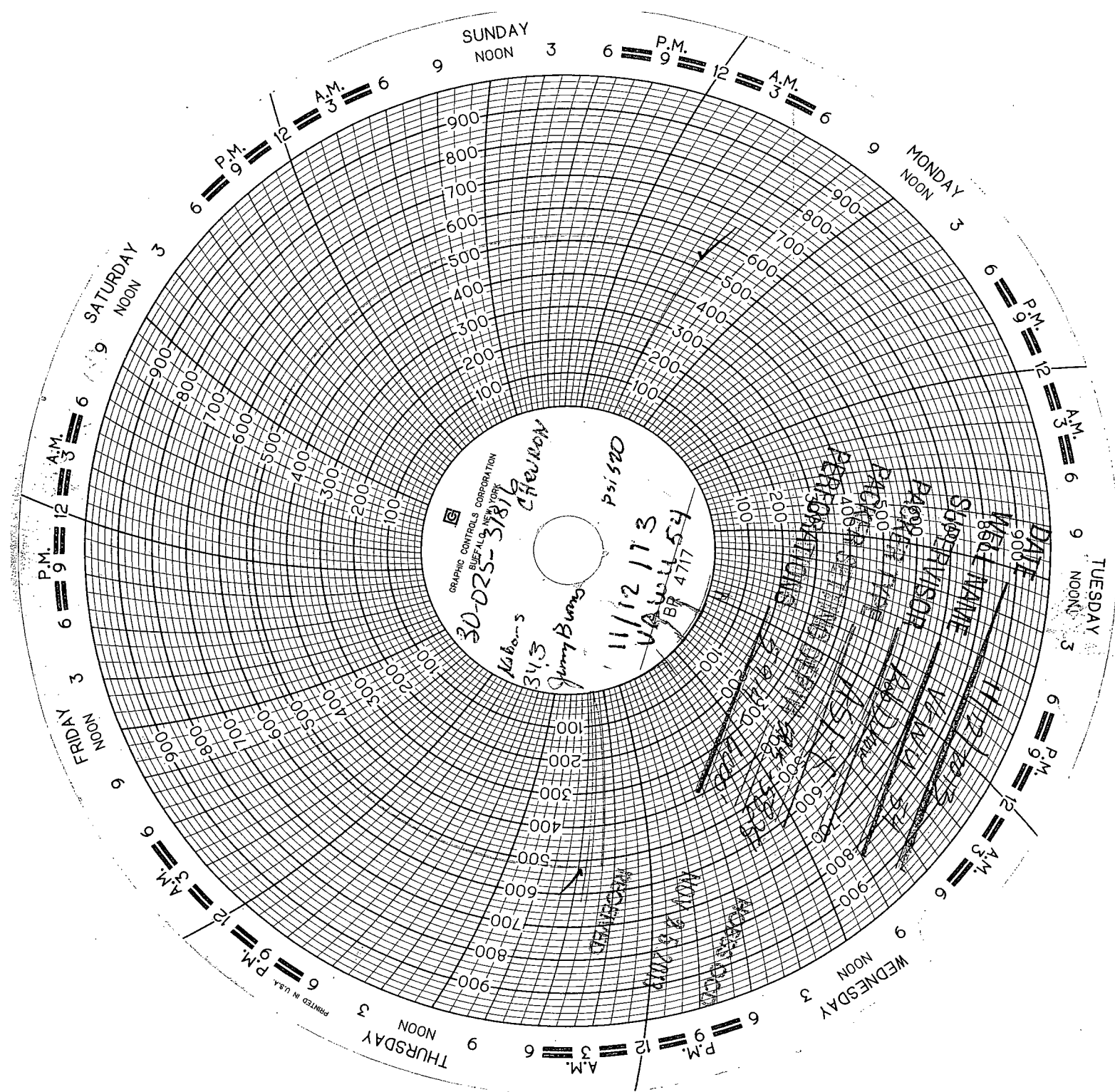
*Mark Whitaker*

TITLE: Compliance Officer

DATE: 11-26-2013

Conditions of Approval (if any):

NOV 26 2013



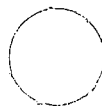
Ing State

B-36

175 348

51 N

1588 E





# Summary Report

Major Rig Work Over (MRWO)

Stimulation

Job Start Date: 10/31/2013

Job End Date: 11/11/2013

Well Name VACUUM GLORIETA WEST UNIT 054		Lease Vacuum Glorieta West Unit	Field Name Vacuum	Business Unit Mid-Continent	
Ground Elevation (ft) 3,996.00	Original RKB (ft) 4,010.00	Current RKB Elevation		Mud Line Elevation (ft)	Water Depth (ft)

Report Start Date: 10/31/2013

Com

CREW TRAVEL

SAFETY MEETING AND JSA REVIEW

MOVE ON LOCATION, SPOT EQUIPMENT AND RIG UP RELATED RIG EQUIPMENT, COULD NOT STAND UP DERRICK DUE TO HIGH WINDS, WOW

CREW LUNCH

WAITING ON WEATHER TO CONTINUE RIG UP OPERATIONS

Report Start Date: 11/1/2013

Com

CREW TRAVEL

SAFETY MEETING AND JSA REVIEW

FINISH RIG UP OF WORKOVER UNIT

ND SLIP TYPE WELL HEAD AND FULL OPEN VALVE

NU 7 1/16" 5000 PSI DUAL HYDRAULIC BOP WITH BLINDS AND 2 3/8" RAMS AND TEST SAME 250LOW/500HIGH

PUMP TUBING CAPACITY OF 23 BBLs OF 10# BRINE @ 2250PSI TO ENSURE WELL IS ON VACCUM BEFORE RELEASING PACKER

RELEASE 5 1/2" BACKER LOC SET PACKER SET @5926' ON 2 3/8" 4.7# DUO-LINE, HAVING TROUBLE RELEASING PACKER, CIRC BRINE TO EQUALIZE PRESS. BEFOR TOO

TOOH W/ 8 JTS OF 2 3/8" 4.7# DUO-LINE

SHUT DOWN TO WAIT ON ROTARTY TO SHOOT HOLES IN TUBIN TO MAKE CIRCULATION POSSIBLE TO EQUALIZE PSI

CREW TRAVEL

Report Start Date: 11/2/2013

Com

CREW TRAVEL

SAFETY MEETING AND JSA REVIEW

RIG UP WIRELINE/SHUT DOWN DUE TO FIRE AT TANK BATTERY NEARBY/MOVE EVERYONE TO SAFE DISTANCE UNTIL FIRE IS PUT OUT AND WORK WAS SAFE TO CONTINUE

RIH W/ 1 3/8" PERF GUN TO SHOOT HOLE IN THE TUBING @5690',

CIRCULATE AND CONDITION HOLE W/ 124BBLs 10#BRINE TO EQUALIZE PRESSURE

SHUT DOWN DUE TO RIG REPAIRS

BRKES NEED TO BE CHANGED OUT IN ORDER TO CONTINUE WORK

Report Start Date: 11/4/2013

Com

CREW TRAVEL

SAFETY MEETING AND JSA REVIEW

RELEASE 5 1/2" BAKER LOC SET PACKER AND TOO

CREW LUNCH

PU 2 3/8" WS AND 4 3/4" MTB AND TIH TO 6030' FOR CLEAN OUT

TAG FILL @5945' W/ 183JTS

RIG UP SWIVEL TO CLEAN OUT

CLEAN OUT FROM 5945' TO 5977'

CIRCULATE HOLE CLEAN

CREW TRAVEL

Report Start Date: 11/5/2013

Com

CREW TRAVEL TO LOCATION.

JSA AND SAFTEY MEETING.

CHECK SICP HAD 0 PSI AND SITP HAD 0 PSI. RIGGED UP POWER SWIVEL. CLEAN OUT FROM 5,927 TO 6,045'. ON RETURNS HAD SCALE AND IRON SULFATE SCALE.

CIRCUALTE HOLE CLEAN WITH A TOTAL OF 110 BBLs OF BRINE WATER. RIGGED DOWN POWER SWIVEL.

CREW TOH WITH 194 JTS OF 2-3/8 L-80 TBG.

JSA. SPOT IN EQUIPMENT. RIGGED UP GRAY WIRELINE.

R/U AND TEST LUBRICATOR TO 700 PSI. PICKED UP 5-1/2 CAST IRON BRIDGE PLUGG WITH BAKER 20 SETTING TOOL. SET @ 6,025' CORRLEATED WITH HALLIBURTON LOGGS.

PICKED UP 3-1/2 CEMENT DUMP BAILER 40'. TAGGED UP PLUGG @ 6,025'. DUMP BAILED 15 FT OF CEMENT ON PLUG. TEST CAST IRON PLUGG @ 500 PSI HELD GOOD.

R/U AND TEST LUBRICATOR TO 700 PSI. MAKE TWO RUNS. PERFORATE 5 1/2" CASING WITH 3 JSPF. PERFORATE PERFS @ 5,914, 5,924', 5960', 5,970', 5,982',5988', 5,996', 6,000'. ALL SHOTS FIRED. RIGGED DOWN GRAY WIRELINE. SECURE WELL SHUT IN FOR THE NIGHT.

CREW TRAVEL TO YARD.

Report Start Date: 11/6/2013



# Summary Report

Major Rig Work Over (MRWO)

Stimulation

Job Start Date: 10/31/2013

Job End Date: 11/11/2013

Well Name VACUUM GLORIETA WEST UNIT 054		Lease Vacuum Glorieta West Unit	Field Name Vacuum	Business Unit Mid-Continent	
Ground Elevation (ft) 3,996.00	Original RKB (ft) 4,010.00	Current RKB Elevation		Mud Line Elevation (ft)	Water Depth (ft)

Com

CREW TRAVEL TO LOCATION.

JSA AND SAFETY MEETING.

RIGGED UP HYDROSTATIC TBG TESTERS.

CHECK SICP HAD 0 PSI. PICKED UP 5-1/2 H.D TREATING PKR. TIH WITH 184 JTS OF 2-3/8 L-80 TBG. TESTING TBG TO 6,000 PSI. SET PKR @ 5,856'. TEST BACKSIDE TO 500 PSI HELD GOOD.

JSA, R/U ACID UNIT. ACIDIZE PERFS FROM 5,914'-6,000' WITH 4000 GAL 15% HCL, DIVERT USING 180 1.2 SG 7/8" RCN BALLS IN GROUPS OF 10. 5,500 MAX PSI. AVG PSI 3700, ISP VAC PSI, 5 MIN 0 PSI, 10 MIN 0 PSI, 15 MIN 0 PSI. TOTAL LOAD 120 BBL, MAX RATE 7.0 BPM, AVG RATE 6.0 BPM. SHUT IN WELL, ALLOW ACID TO SPEND. R/D ACID UNIT. SDON.

CREW TRAVEL TO YARD.

Report Start Date: 11/7/2013

Com

CREW TRAVEL TO LOCATION.

JSA AND SAFETY MEETING.

CHECK SICP HAD 0 PSI AND SITP HAD 300 PSI. ATTEMPTED FLOW WELL PRESSURE BLEED OFF.

RIGGED UP 2-3/8 SWABB EQUIPMENT. TAGGED FLUID LEVEL @ 2,250'. MADE 16 RUNS. FIRST 3 SAMPLES HAD LOTS OF SOLIDS. LAST 2 WERE CLEAN FLUID WITH A TRACE OF OIL. RECOVERED A TOTAL OF 62 BBLs OF FLUID. LEFT FLUID LEVEL @ 3,900 RIGGED DOWN SWAB EQUIPMENT. REVIEW 360 MY SPACE WITH CREW. SECURE WELL SHUT IN FOR THE NIGHT.

CREW TRAVEL TO YARD.

Report Start Date: 11/8/2013

Com

CREW TRAVEL TO LOCATION.

JSA AND SAFETY MEETING.

CHECK SICP HAD 0 PSI AND SITP HAD 500 PSI. BLEED WELL OFF. WELL FLOWED. PUMPED 24 BBLs OF BRINE WELL ON VACUUM.

PICKED UP 5 JTS OF 2-3/8 L-80 TBG. TIH TO KNOCK OFF BALLS OFF OF PERFORATIONS. WENT DOWN TO 6,018. CREW TOH WITH 185 JTS OF 2-3/8 L-80 TBG. LAYED DOWN 5-1/2 TREATING PKR.

JSA. MOVE OFF 202 JTS OF 2-3/8 L-80 TBG FROM RACKS. SET IN 202 JTS OF 2-3/8 T-K 15 TBG ON RACKS.

JSA. CREW TALLEY NEW INJECTION TBG. PICKED UP NEW 5-1/2X2-3/8 NICKLE O.D AND PLASTIC I.D AS-1X WITH T-2 ON/OFF TOOL WITH 1.43 F NIPPLE WITH 4' NICKLE AND PLASTIC I.D SUB, (1) 2-3/8 PUMP OUT PLUGG. CREW TIH WITH A TOTAL WITH 56 JTS OF 2-3/8 T-K 15 TBG.

CREW REST FOR LUNCH.

CREW CONTINUE TIH WITH 2-3/8 T-K 15 TBG. TIH WITH A 130 JTS OF 2-3/8 TK 15 TBG. WITH TOTAL OF 186 JTS OF T-K 15 TBG.

LOADED TBG WITH BRINE WATER. SET PKR @ 5,853 TO CENTER RUBBER OF TOOL. TOP OF PKR @ 5,848'. END OF PKR @ 5,862'. TEST PKR TO 550 PSI HELD GOOD.

RELEASED ON/OFF TOOL. ESTABLISH TO CIRCULATE PKR FLUID. PRESSURE CAME UP TO 500 PSI AND LOST PRESSURE. PUMP OUT PLUGG GAVE OUT. ATTEMPTED TO LATCHED ON PKR AND PKR SLID DOWN HOLE 4'. RELEASED PKR. MOVE PKR UP HOLE 18'. SET PKR. SECURE WELL SHUT IN FOR THE NIGHT.

CREW TRAVEL TO YARD.

Report Start Date: 11/11/2013

Com

CREW TRAVEL

SAFETY MEETING AND JSA REVIEW

TEST PACKER 500 PSI FOR 15 MIN(GOOD TEST,

R/U SLICKLINE TO SET BLANKING PLUG, TEST LUB. 250LOW/600HIGH

RIH W/ BLANKING PLUG TO SET IN 1.43F NIPPLE, SET @ 5828' POOH W/ SLICKLINE RIG DOWN EQUIP.

RELEASE ON/OFF TOOL AND CIRC. 120BBLs PACKER FLUID FLUID

RIG DOWN FLOOR AND N/D BOP

NU 7 1/16" 5000K B-1 WELL HEAD AND RELATED EQUIP

R/U SLICKLINE

PULL BLANKING PLUG

R/D SLICKLINE EQUIP

RIG DOWN 307 AND MOVE TO VGWU #53

CREW TRAVEL

Report Start Date: 11/12/2013

Com

JSA REVIEW

RU IRON LINES TO CSG VALVE

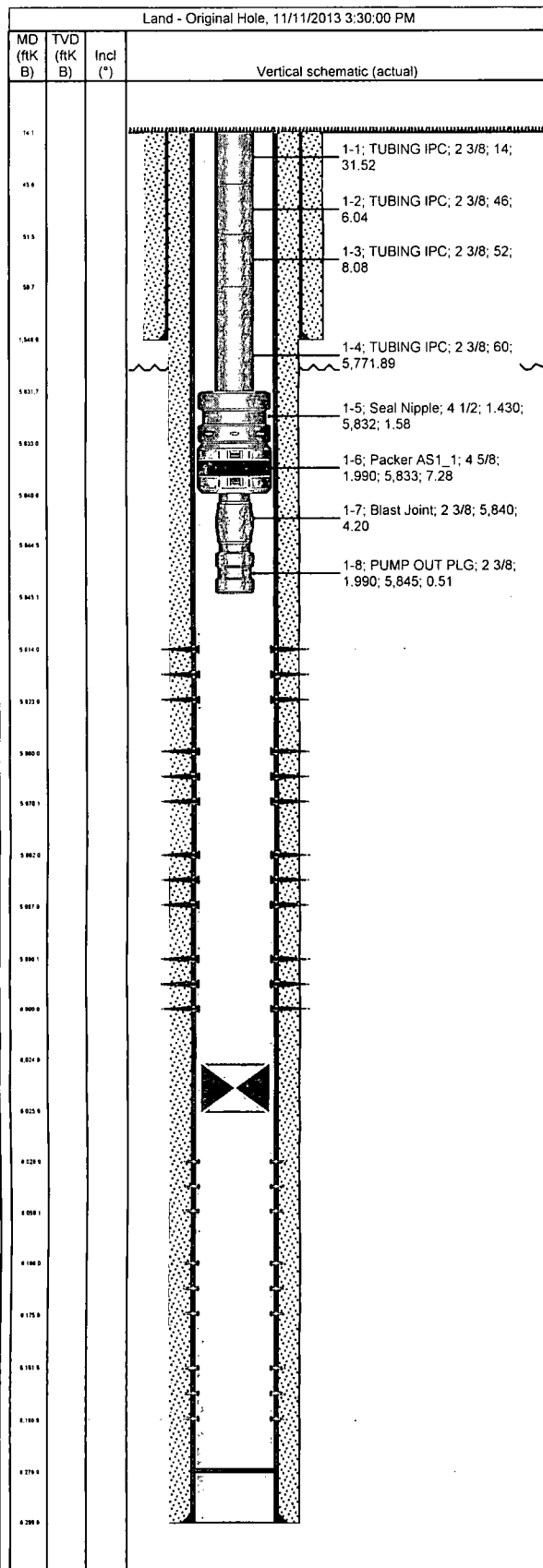
TEST WELL BORE TO 520 PSI FOR 30 MINS

RD PUMP TRUCK EQ



# Tubing Summary

Well Name <b>VACUUM GLORIETA WEST UNIT 054</b>	Lease <b>Vacuum Glorieta West Unit</b>	Field Name <b>Vacuum</b>	Business Unit <b>Mid-Continent</b>	
Ground Elevation (ft) <b>3,996.00</b>	Original RKB Elevation (ft) <b>4,010.00</b>	Current RKB Elevation	Mud Line Elevation (ft)	Water Depth (ft)
Current KB to Ground (ft)	Current KB to Mud Line (ft)	Current KB to Csg Flange (ft)	Current KB to Tubing Head (ft)	



Tubing Strings									
Tubing Description <b>Tubing - Production</b>		Planned Run? <b>N</b>		Set Depth (MD) (ftKB) <b>5,845.1</b>			Set Depth (TVD) (ftKB)		
Run Date <b>11/11/2013</b>		Run Job <b>Stimulation, 10/31/2013 05:30</b>		Pull Date			Pull Job		
Jts	Item Des	OD (in)	ID (in)	Wt (lb/ft)	Grade	Top Thread	Len (ft)	Top (ftKB)	Btm (ftKB)
1	TUBING IPC	2 3/8		4.70	J-55		31.52	14.0	45.5
1	TUBING IPC	2 3/8		4.70	J-55		6.04	45.5	51.6
1	TUBING IPC	2 3/8		4.70	J-55		8.08	51.6	59.6
184	TUBING IPC	2 3/8		4.70	J-55		5,771.89	59.6	5,831.5
	Seal Nipple	4 1/2	1.430				1.58	5,831.5	5,833.1
	Packer AS1_1	4 5/8	1.990				7.28	5,833.1	5,840.4
1	Blast Joint	2 3/8		4.70	J-55		4.20	5,840.4	5,844.6
	PUMP OUT PLG	2 3/8	1.990				0.51	5,844.6	5,845.1

Rod Strings			
Rod Description	Planned Run?	Set Depth (ftKB)	Set Depth (TVD) (ftKB)
Run Date	Run Job	Pull Date	Pull Job

Rod Components							
Jts	Item Des	OD (in)	Grade	Model	Len (ft)	Top (ftKB)	Btm (ftKB)