

District I  
1625 N. French Dr., Hobbs, NM 88240  
Phone: (575) 393-6161 Fax: (575) 393-0720  
District II  
511 S. First St., Artesia, NM 88210  
Phone: (575) 748-1283 Fax: (575) 748-9720  
District III  
1000 Rio Brazos Road, Aztec, NM 87410  
Phone: (505) 334-6178 Fax: (505) 334-6170  
District IV  
1220 S. St. Francis Dr., Santa Fe, NM 87505  
Phone: (505) 476-3460 Fax: (505) 476-3462

State of New Mexico  
Energy, Minerals & Natural Resources Department  
OIL CONSERVATION DIVISION  
1220 South St. Francis Dr.  
Santa Fe, NM 87505

Form C-102  
Revised August 1, 2011  
Submit one copy to appropriate  
District Office

☐ AMENDED REPORT

WELL LOCATION AND ACREAGE DEDICATION PLAT

<sup>1</sup> API Number <b>30-025-41516</b>	<sup>2</sup> Pool Code <b>97964</b>	<sup>3</sup> Pool Name <b>WC-025 G-07 S243225C; LOWER BONE SPRING</b>
<sup>4</sup> Property Code <b>39747</b>	<sup>5</sup> Property Name <b>BELL LAKE "19" STATE</b>	<sup>6</sup> Well Number <b>3H</b>
<sup>7</sup> OGRID No. <b>6137</b>	<sup>8</sup> Operator Name <b>DEVON ENERGY PRODUCTION COMPANY, L.P.</b>	<sup>9</sup> Elevation <b>3548.4</b>

<sup>10</sup> Surface Location

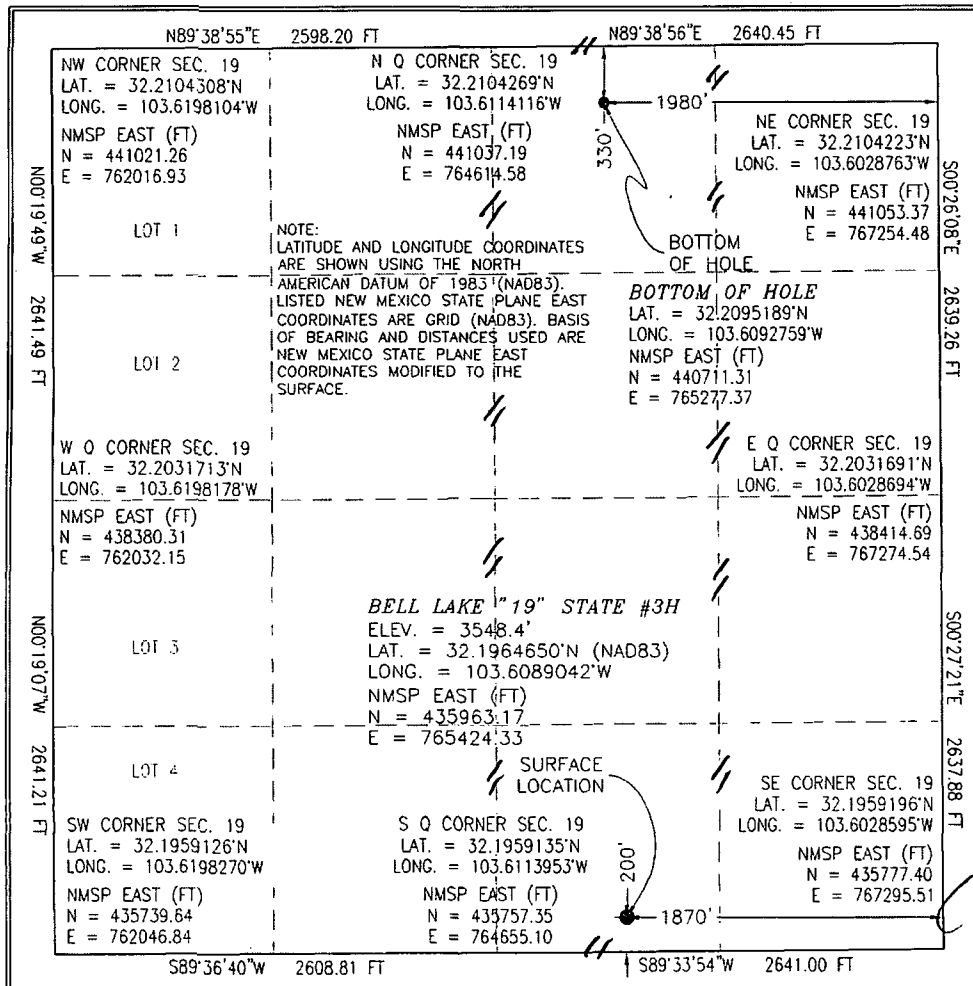
UL or lot no.	Section	Township	Range	Lot Idn	Feet from the	North/South line	Feet from the	East/West line	County
<b>O</b>	<b>19</b>	<b>24 S</b>	<b>33 E</b>		<b>200</b>	<b>SOUTH</b>	<b>1870</b>	<b>EAST</b>	<b>LEA</b>

<sup>11</sup> Bottom Hole Location If Different From Surface

UL or lot no.	Section	Township	Range	Lot Idn	Feet from the	North/South line	Feet from the	East/West line	County
<b>B</b>	<b>19</b>	<b>24 S</b>	<b>33 E</b>		<b>330</b>	<b>NORTH</b>	<b>1980</b>	<b>EAST</b>	<b>LEA</b>

<sup>12</sup> Dedicated Acres <b>160</b>	<sup>13</sup> Joint or Infill	<sup>14</sup> Consolidation Code	<sup>15</sup> Order No.
---	-------------------------------	----------------------------------	-------------------------

No allowable will be assigned to this completion until all interests have been consolidated or a non-standard unit has been approved by the division.



<sup>17</sup> OPERATOR CERTIFICATION

I hereby certify that the information contained herein is true and complete to the best of my knowledge and belief, and that this organization either owns a working interest or unleased mineral interest in the land including the proposed bottom hole location or has a right to drill this well at this location pursuant to a contract with an owner of such a mineral or working interest, or to a voluntary pooling agreement or a compulsory pooling order heretofore entered by the division.

Signature: **D. H. Cook** Date: **11/21/2013**

Printed Name: **David H. Cook** Regulatory Specialist

E-mail Address: **david.cook@dmn.com**

<sup>18</sup> SURVEYOR CERTIFICATION

I hereby certify that the well location shown on this plat was plotted from field notes of actual surveys made by me or under my supervision, and that the same is true and correct to the best of my belief.

OCTOBER 22, 2013

Date of Survey

Signature and Seal of Professional Surveyor

Certificate Number: **REDEMPTION PARANTILLO, PLS 12797**

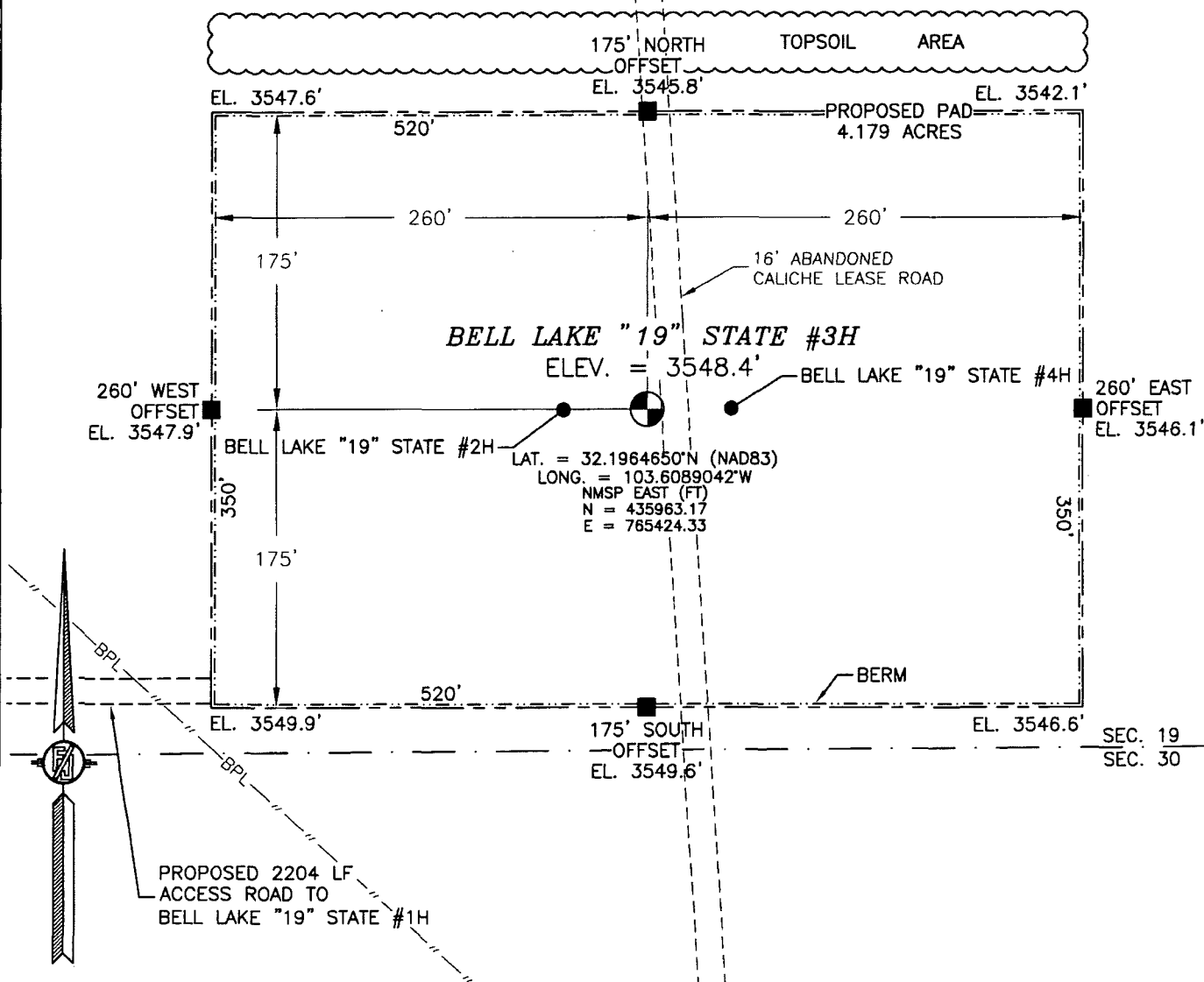
SURVEY NO. 2398

PP: 200 FSL ; 2200 FEL

DEC 02 2013

SECTION 19, TOWNSHIP 24 SOUTH, RANGE 33 EAST, N.M.P.M.  
LEA COUNTY, STATE OF NEW MEXICO  
**SITE MAP**

NOTE: LATITUDE AND LONGITUDE COORDINATES ARE SHOWN USING THE NORTH AMERICAN DATUM OF 1983 (NAD83). LISTED NEW MEXICO STATE PLANE EAST COORDINATES ARE GRID (NAD83). BASIS OF BEARING AND DISTANCES USED ARE NEW MEXICO STATE PLANE EAST COORDINATES MODIFIED TO THE SURFACE



010 50 100 200

SCALE 1" = 100'  
DIRECTIONS TO LOCATION

FROM MILE MARKER 25 ON STATE HIGHWAY 128 (JAL HIGHWAY) GO EAST 0.45 MILES TO CALICHE LEASE ROAD ON RIGHT, GO SOUTH 1.0 MILES TO CALICHE LEASE ROAD ON LEFT, GO EAST 0.15 MILES TO SOUTHEAST CORNER OF PAD OF BELL LAKE "19" STATE #1H. FROM HERE FOLLOW LATH EAST 2204', 0.42 MILES TO SOUTHWEST CORNER OF PAD.

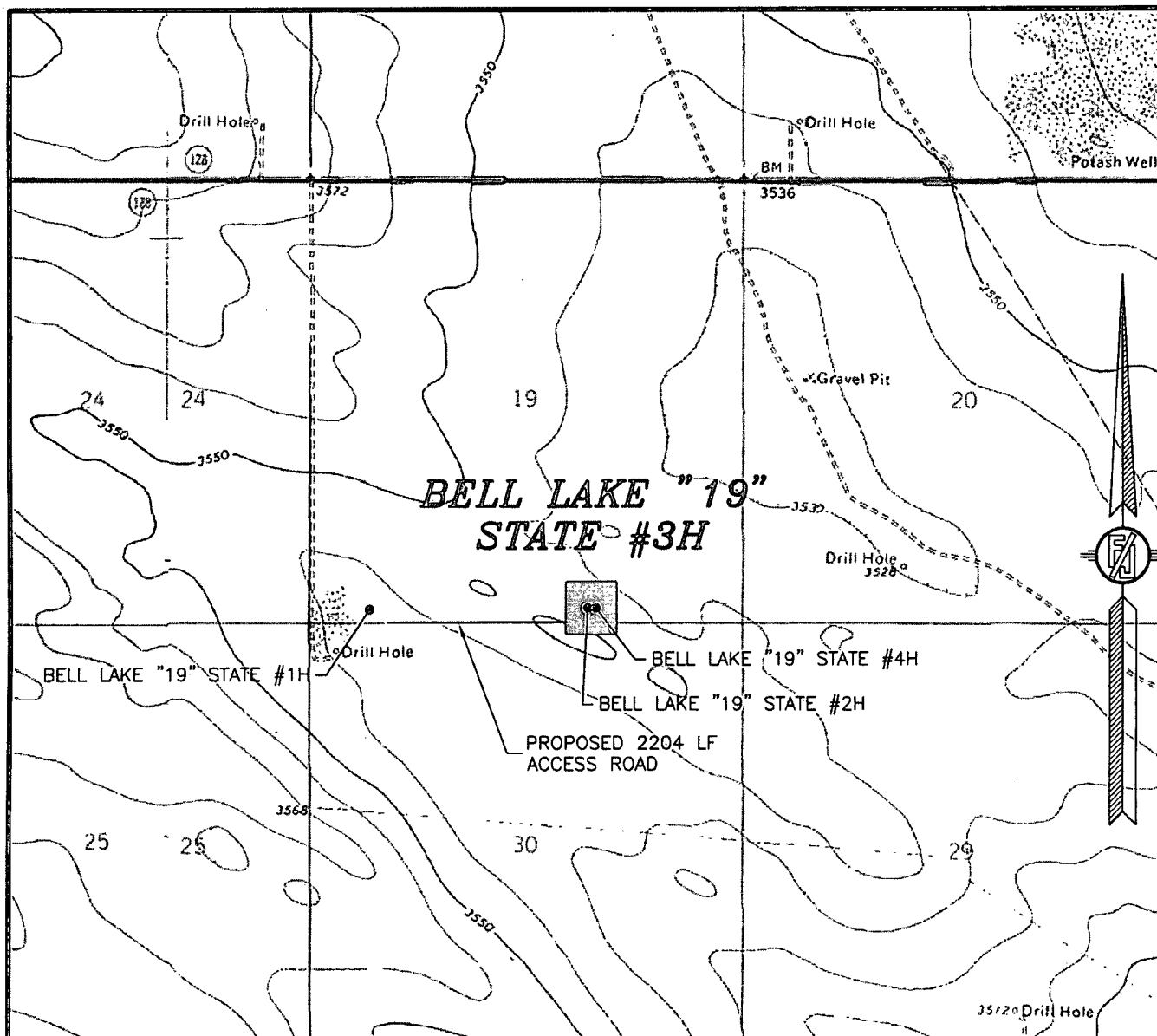
DEVON ENERGY PRODUCTION COMPANY, L.P.  
**BELL LAKE "19" STATE #3H**  
LOCATED 200 FT. FROM THE SOUTH LINE  
AND 1870 FT. FROM THE EAST LINE OF  
SECTION 19, TOWNSHIP 24 SOUTH,  
RANGE 33 EAST, N.M.P.M.  
LEA COUNTY, STATE OF NEW MEXICO

OCTOBER 22, 2013

SURVEY NO. 2398

MADRON SURVEYING, INC. 301 SOUTH CANAL (575) 234-3341 CARLSBAD, NEW MEXICO

SECTION 19, TOWNSHIP 24 SOUTH, RANGE 33 EAST, N.M.P.M.  
LEA COUNTY, STATE OF NEW MEXICO  
LOCATION VERIFICATION MAP



USGS QUAD MAP:  
BELL LAKE

NOT TO SCALE

DEVON ENERGY PRODUCTION COMPANY, L.P.

**BELL LAKE "19" STATE #3H**

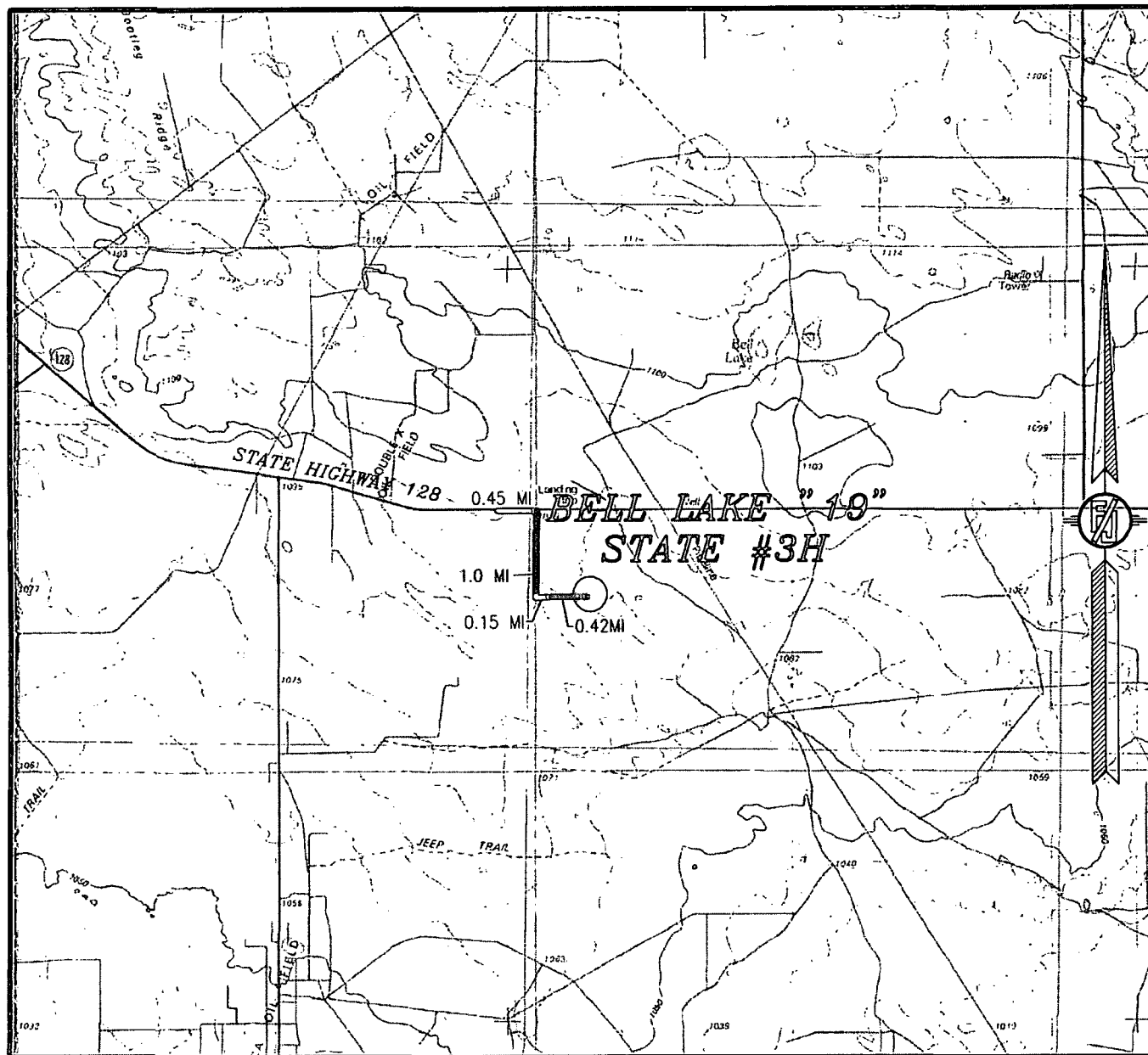
LOCATED 200 FT. FROM THE SOUTH LINE  
AND 1870 FT. FROM THE EAST LINE OF  
SECTION 19, TOWNSHIP 24 SOUTH,  
RANGE 33 EAST, N.M.P.M.  
LEA COUNTY, STATE OF NEW MEXICO

OCTOBER 22, 2013

SURVEY NO. 2398

MADRON SURVEYING, INC. 301 SOUTH CANAL (575) 234-3341 CARLSBAD, NEW MEXICO

SECTION 19, TOWNSHIP 24 SOUTH, RANGE 33 EAST, N.M.P.M.  
LEA COUNTY, STATE OF NEW MEXICO  
VICINITY MAP



NOT TO SCALE

DEVON ENERGY PRODUCTION COMPANY, L.P.

**BELL LAKE "19" STATE #3H**

LOCATED 200 FT. FROM THE SOUTH LINE  
AND 1870 FT. FROM THE EAST LINE OF  
SECTION 19, TOWNSHIP 24 SOUTH,  
RANGE 33 EAST, N.M.P.M.  
LEA COUNTY, STATE OF NEW MEXICO

**DIRECTIONS TO LOCATION**

FROM MILE MARKER 25 ON STATE HIGHWAY 128 (JAL HIGHWAY) GO  
EAST 0.45 MILES TO CALICHE LEASE ROAD ON RIGHT, GO SOUTH 1.0  
MILES TO CALICHE LEASE ROAD ON LEFT, GO EAST 0.15 MILES TO  
SOUTHEAST CORNER OF PAD OF BELL LAKE "19" STATE #1H. FROM  
HERE FOLLOW LATH EAST 2204', 0.42 MILES TO SOUTHWEST CORNER  
OF PAD.

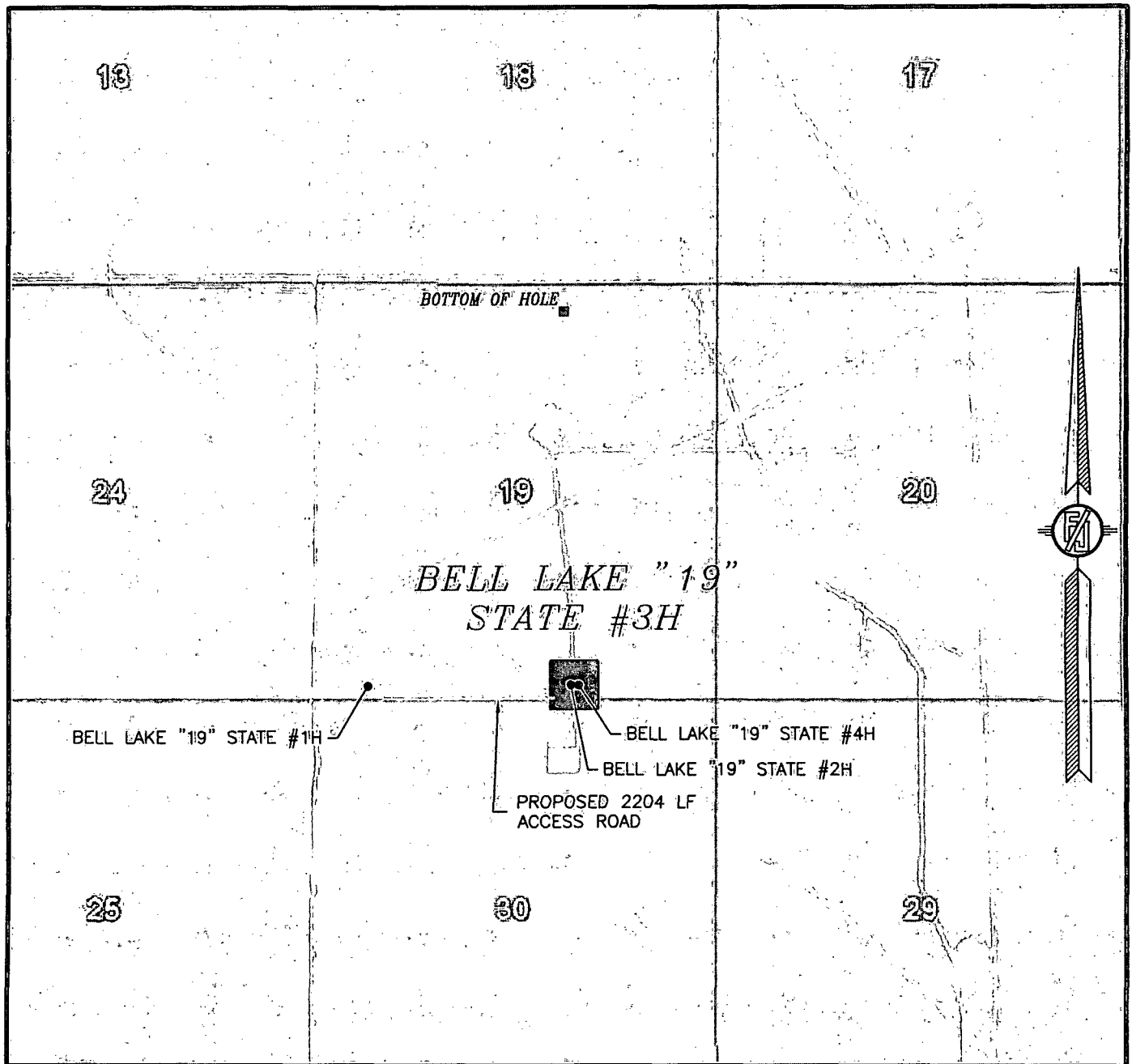
OCTOBER 22, 2013

SURVEY NO. 2398

MADRON SURVEYING, INC. 301 SOUTH CANAL  
(575) 234-3341

CARLSBAD, NEW MEXICO

SECTION 19, TOWNSHIP 24 SOUTH, RANGE 33 EAST, N.M.P.M.  
LEA COUNTY, STATE OF NEW MEXICO  
*AERIAL PHOTO*



NOT TO SCALE  
AERIAL PHOTO:  
GOOGLE EARTH  
MARCH 2012

*DEVON ENERGY PRODUCTION COMPANY, L.P.*

***BELL LAKE "19" STATE #3H***

*LOCATED 200 FT. FROM THE SOUTH LINE  
AND 1870 FT. FROM THE EAST LINE OF  
SECTION 19, TOWNSHIP 24 SOUTH,  
RANGE 33 EAST, N.M.P.M.  
LEA COUNTY, STATE OF NEW MEXICO*

*OCTOBER 22, 2013*

*SURVEY NO. 2398*

*MADRON SURVEYING, INC. 301 SOUTH CANAL (575) 234-3341 CARLSBAD, NEW MEXICO*