

District I
1625 N. French Dr., Hobbs, NM 88240
Phone: (575) 393-6161 Fax: (575) 393-0720
District II
811 S. First St., Artesia, NM 88210
Phone: (575) 748-1283 Fax: (575) 748-9720
District III
1000 Rio Brazos Road, Aztec, NM 87410
Phone: (505) 334-6178 Fax: (505) 334-6170
District IV
1220 S. St. Francis Dr., Santa Fe, NM 87505
Phone: (505) 476-3460 Fax: (505) 476-3460

State of New Mexico

Energy, Minerals & Natural Resources Department

OIL CONSERVATION DIVISION

1220 South St. Francis Dr.

Santa Fe, NM 87505

Form C-102

Revised August 1, 2011

Submit one copy to appropriate

District Office

☐ AMENDED REPORT

RECEIVED

WELL LOCATION AND ACREAGE DEDICATION PLAT

¹ API Number 30-025-41517		² Pool Code 97964	³ Pool Name WC-025 G-07 S243225C; LOWER BONE SPRING
⁴ Property Code 39747	⁵ Property Name BELL LAKE "19" STATE		⁶ Well Number 4H
⁷ OGRID No. 6137	⁸ Operator Name DEVON ENERGY PRODUCTION COMPANY, L.P.		⁹ Elevation 3548.1

¹⁰ Surface Location

UL or lot no.	Section	Township	Range	Lot Idn	Feet from the	North/South line	Feet from the	East/West line	County
O	19	24 S	33 E		200	SOUTH	1820	EAST	LEA

¹¹ Bottom Hole Location If Different From Surface

UL or lot no.	Section	Township	Range	Lot Idn	Feet from the	North/South line	Feet from the	East/West line	County
A	19	24 S	33 E		330	NORTH	660	EAST	LEA

¹² Dedicated Acres	¹³ Joint or Infill	¹⁴ Consolidation Code	¹⁵ Order No.
160			

No allowable will be assigned to this completion until all interests have been consolidated or a non-standard unit has been approved by the division.

<p>N89°38'55"E 2598.20 FT</p> <p>NW CORNER SEC. 19 LAT. = 32.2104308°N LONG. = 103.6198104°W NMSP EAST (FT) N = 441021.26 E = 762016.93</p> <p>LOT 1</p>		<p>N89°38'56"E 2640.45 FT</p> <p>N Q CORNER SEC. 19 LAT. = 32.2104269°N LONG. = 103.6114116°W NMSP EAST (FT) N = 441037.19 E = 764614.58</p> <p>LOT 2</p>		<p>NE CORNER SEC. 19 LAT. = 32.2104223°N LONG. = 103.6028763°W NMSP EAST (FT) N = 441053.37 E = 767254.48</p> <p>LOT 3</p>	
<p>W Q CORNER SEC. 19 LAT. = 32.2031713°N LONG. = 103.6198178°W NMSP EAST (FT) N = 438380.31 E = 762032.15</p> <p>LOT 4</p>		<p>E Q CORNER SEC. 19 LAT. = 32.2031691°N LONG. = 103.6028694°W NMSP EAST (FT) N = 438414.69 E = 767274.54</p> <p>LOT 5</p>		<p>SE CORNER SEC. 19 LAT. = 32.1959196°N LONG. = 103.6028595°W NMSP EAST (FT) N = 435777.40 E = 767295.51</p> <p>LOT 6</p>	
<p>NOTE: LATITUDE AND LONGITUDE COORDINATES ARE SHOWN USING THE NORTH AMERICAN DATUM OF 1983 (NAD83). LISTED NEW MEXICO STATE PLANE EAST COORDINATES ARE GRID (NAD83). BASIS OF BEARING AND DISTANCES USED ARE NEW MEXICO STATE PLANE EAST COORDINATES MODIFIED TO THE SURFACE.</p>		<p>BOTTOM OF HOLE</p> <p>BOTTOM OF HOLE LAT. = 32.2095166°N LONG. = 103.6050089°W NMSP EAST (FT) N = 440719.40 E = 766597.13</p>		<p>BELL LAKE "19" STATE #4H ELEV. = 3548.1' LAT. = 32.1964651°N (NAD83) LONG. = 103.6087426°W NMSP EAST (FT) N = 435963.55 E = 765474.32</p> <p>SURFACE LOCATION</p>	
<p>S89°36'40"W 2608.81 FT</p>		<p>S89°33'54"W 2641.00 FT</p>		<p>S00°26'08"E 2639.26 FT</p>	

¹⁷ OPERATOR CERTIFICATION

I hereby certify that the information contained herein is true and complete to the best of my knowledge and belief, and that this organization either owns a working interest or unleased mineral interest in the land including the proposed bottom hole location or has a right to drill this well at this location pursuant to a contract with an owner of such a mineral or working interest, or to a voluntary pooling agreement or a compulsory pooling order heretofore entered by the division.

Signature: David H. Cook Date: 11/21/2013

Printed Name: David H. Cook Title: Regulatory Specialist

E-mail Address: david.cook@dvn.com

¹⁸ SURVEYOR CERTIFICATION

I hereby certify that the well location shown on this plat was plotted from field notes of actual surveys made by me or under my supervision, and that the same is true and correct to the best of my belief.

OCTOBER 21 2013
NEW MEXICO
12797

Date of Survey: 11/21/2013

Signature and Seal of Professional Surveyor: [Signature]

Certificate Number: 12797 SURVEY NO. 2399

DEC 02 2013

SITE MAP

SCALE 1" = 100'

DIRECTIONS TO LOCATION

FROM MILE MARKER 25 ON STATE HIGHWAY 128 (JAL HIGHWAY) GO EAST 0.45 MILES TO CALICHE LEASE ROAD ON RIGHT, GO SOUTH 1.0 MILES TO CALICHE LEASE ROAD ON LEFT, GO EAST 0.15 MILES TO SOUTHEAST CORNER OF PAD OF BELL LAKE "19" STATE #1H. FROM HERE FOLLOW LATH EAST 2204', 0.42 MILES TO SOUTHWEST CORNER OF PAD.

DEVON ENERGY PRODUCTION COMPANY, L.P.
BELL LAKE "19" STATE #4H
LOCATED 200 FT. FROM THE SOUTH LINE
AND 1820 FT. FROM THE EAST LINE OF
SECTION 19, TOWNSHIP 24 SOUTH,
RANGE 33 EAST, N.M.P.M.
LEA COUNTY, STATE OF NEW MEXICO

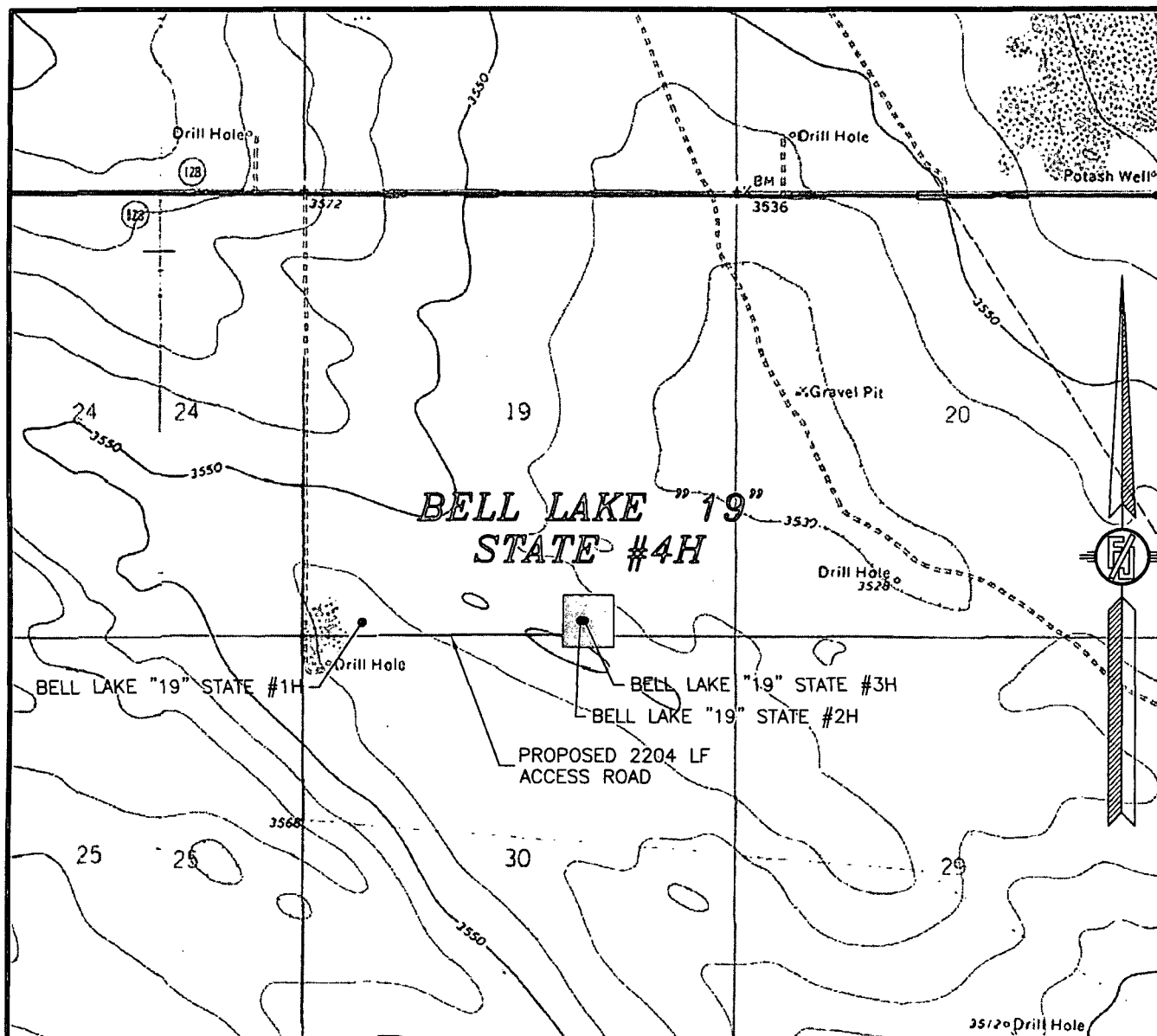
OCTOBER 22, 2013

SURVEY NO. 2399

MADRON SURVEYING, INC. 301 SOUTH CANAL
(575) 234-3341

CARLSBAD, NEW MEXICO

SECTION 19, TOWNSHIP 24 SOUTH, RANGE 33 EAST, N.M.P.M.
LEA COUNTY, STATE OF NEW MEXICO
LOCATION VERIFICATION MAP



USGS QUAD MAP:
BELL LAKE

NOT TO SCALE

DEVON ENERGY PRODUCTION COMPANY, L.P.

BELL LAKE "19" STATE #4H

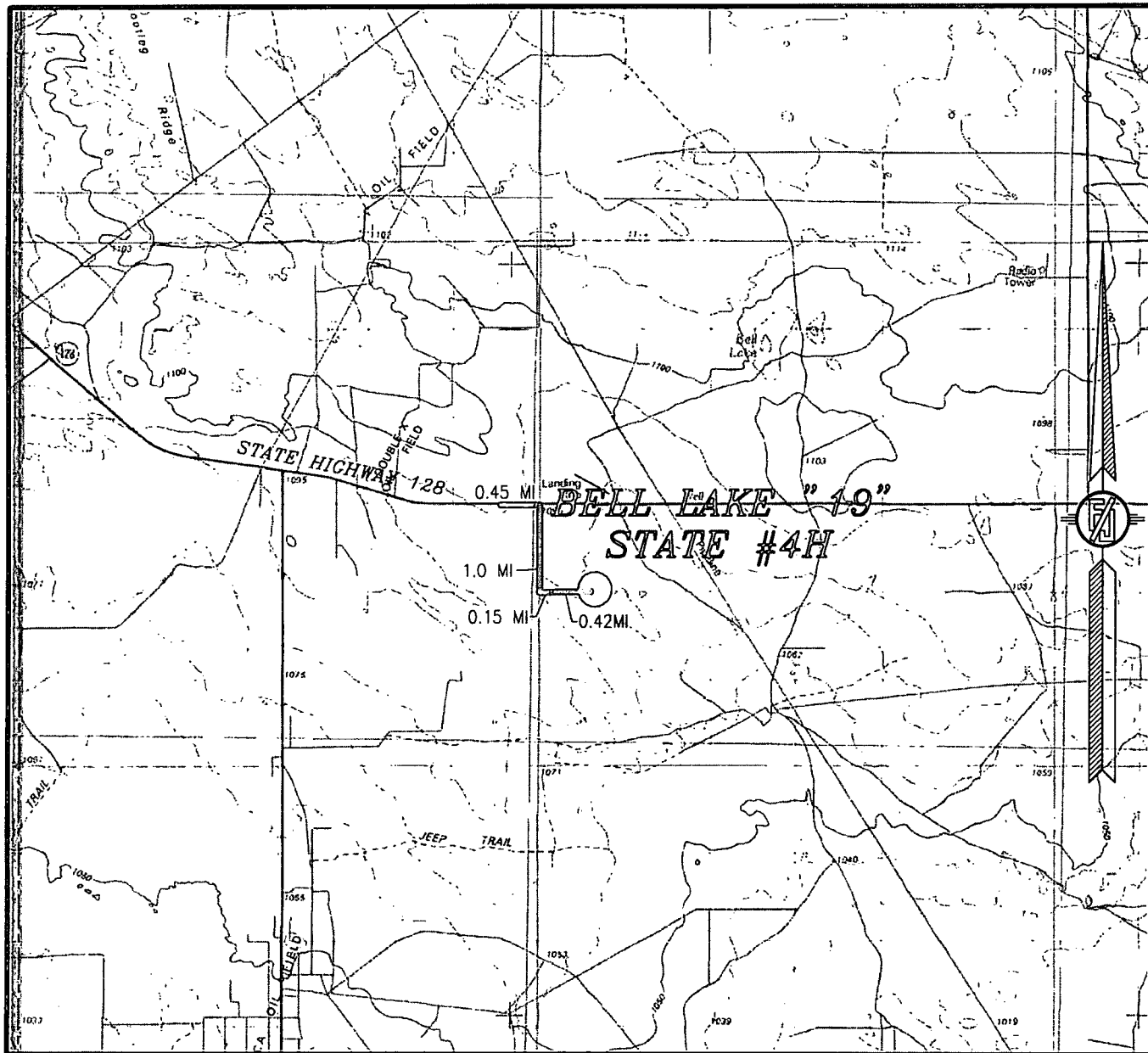
LOCATED 200 FT. FROM THE SOUTH LINE
AND 1820 FT. FROM THE EAST LINE OF
SECTION 19, TOWNSHIP 24 SOUTH,
RANGE 33 EAST, N.M.P.M.
LEA COUNTY, STATE OF NEW MEXICO

OCTOBER 22, 2013

SURVEY NO. 2399

MADRON SURVEYING, INC. 301 SOUTH CANAL CARLSBAD, NEW MEXICO
(575) 234-3341

SECTION 19, TOWNSHIP 24 SOUTH, RANGE 33 EAST, N.M.P.M.
LEA COUNTY, STATE OF NEW MEXICO
VICINITY MAP



NOT TO SCALE

DEVON ENERGY PRODUCTION COMPANY, L.P.

BELL LAKE "19" STATE #4H
LOCATED 200 FT. FROM THE SOUTH LINE
AND 1820 FT. FROM THE EAST LINE OF
SECTION 19, TOWNSHIP 24 SOUTH,
RANGE 33 EAST, N.M.P.M.
LEA COUNTY, STATE OF NEW MEXICO

DIRECTIONS TO LOCATION

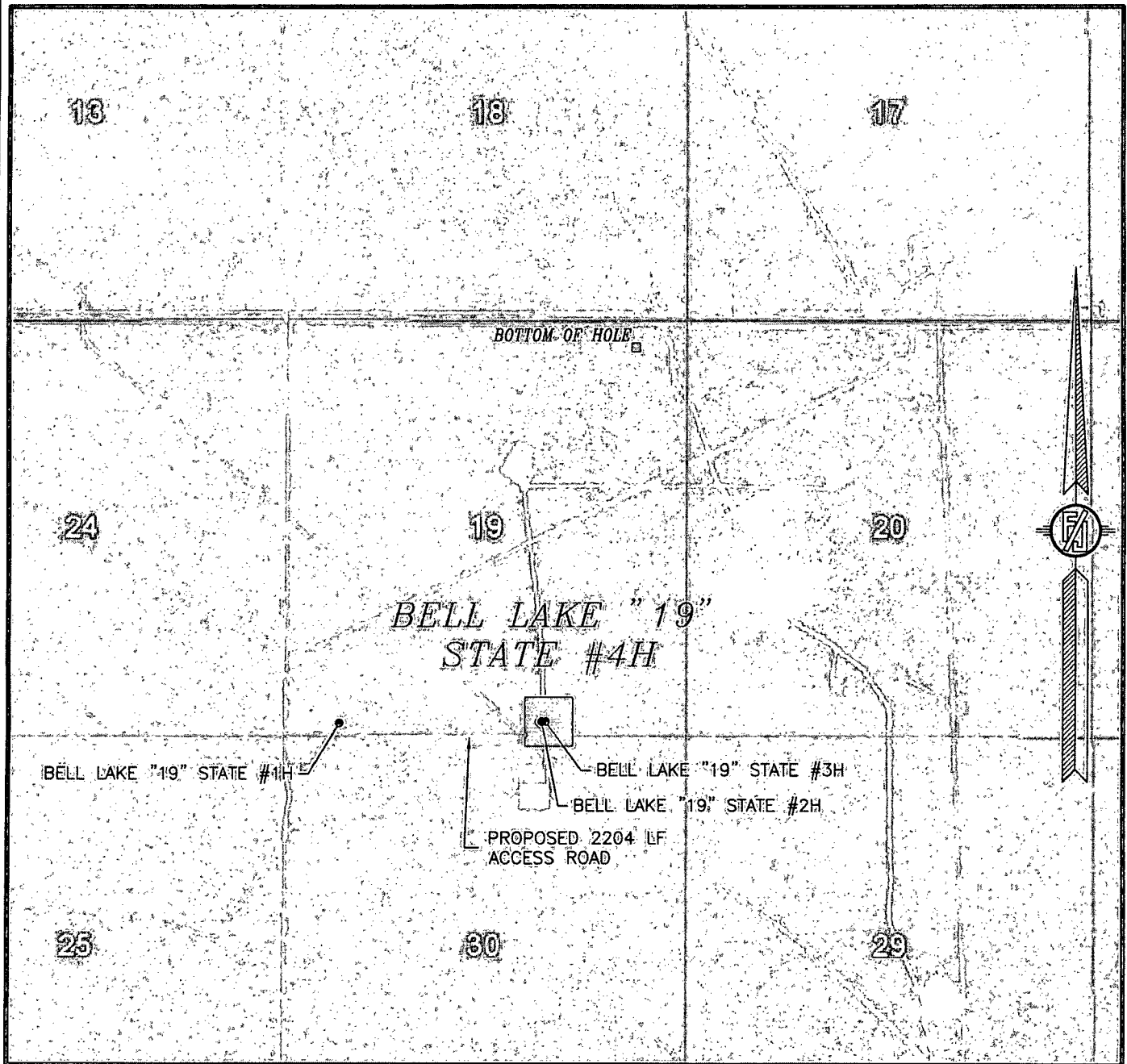
FROM MILE MARKER 25 ON STATE HIGHWAY 128 (JAL HIGHWAY) GO EAST 0.45 MILES TO CALICHE LEASE ROAD ON RIGHT, GO SOUTH 1.0 MILES TO CALICHE LEASE ROAD ON LEFT, GO EAST 0.15 MILES TO SOUTHEAST CORNER OF PAD OF BELL LAKE "19" STATE #1H. FROM HERE FOLLOW LATH EAST 2204', 0.42 MILES TO SOUTHWEST CORNER OF PAD.

OCTOBER 22, 2013

MADRON SURVEYING, INC. 301 SOUTH CANAL
(575) 234-3341

SURVEY NO. 2399
CARLSBAD, NEW MEXICO

SECTION 19, TOWNSHIP 24 SOUTH, RANGE 33 EAST, N.M.P.M.
LEA COUNTY, STATE OF NEW MEXICO
AERIAL PHOTO



NOT TO SCALE
AERIAL PHOTO:
GOOGLE EARTH
MARCH 2012

DEVON ENERGY PRODUCTION COMPANY, L.P.

BELL LAKE "19" STATE #4H

LOCATED 200 FT. FROM THE SOUTH LINE
AND 1820 FT. FROM THE EAST LINE OF
SECTION 19, TOWNSHIP 24 SOUTH,
RANGE 33 EAST, N.M.P.M.
LEA COUNTY, STATE OF NEW MEXICO

OCTOBER 22, 2013

SURVEY NO. 2399

MADRON SURVEYING, INC. 301 SOUTH CANAL (575) 234-3341 CARLSBAD, NEW MEXICO