

Surface Use Plan

Energen Resources Corporation
Cox Federal 35-2H
Sec 35, T23S, R35E
200 fsl, 2240 fel
Lea County, NM

HOBES OCD
NOV 26 2013
RECEIVED

This plan is submitted as the partial requirements of an Application for Permit to Drill as outlined in Onshore Order 1 covering the above referenced well.

Existing Roads:

- A. A map depicting county roads and topography will be used showing access to the proposed location. All access roads will be labeled for points of reference. Any plans for improvement and/or maintenance of existing roads will be provided upon direction of the regulatory agency as identified during on-site meeting discussion. Roads will be maintained, if necessary, according to the 'BLM Gold Book Standards'.
- B. Directions: Travel west on Highway 128 from the intersection of Highways 18 and 128 in Jal 26 miles. Turn right (northwest) on CR XX for 4.6 miles. Turn left (west) on existing lease road for 0.8 miles. Turn left (south) on new construction road for 1 mile to the Cox Federal 35-2H wellpad. (see attached map by Watson Professional Group, Inc.)

Proposed Access Road:

- A. The new access road for the subject well will begin on the south side of an existing old drill site ("dry hole") and travel south for 600' to the planned wellpad. The road leading to the old drill site is an existing two track road that will be upgraded to 'BLM Gold Book Standards'.
- B. The access road will be upgraded and constructed to be 14' wide with adequate contour to permit proper draining.
- C. The surface will be rolled with 6" of caliche, and the sides ditched for proper drainage.

Location of Existing Wells:

The nearest well will be a new planned well, Cox Federal 35-1H. A map indicating existing wells will be shown if within a 1 mile radius of the proposed location.

Location of Proposed Production Facilities:

A diagram depicting the planned location of production facilities will be provided for the subject well, Cox Federal 35-2H. Production facilities will be manufactured and transported to the planned wellsite, see attached diagram of 'Anticipated Wellsite Layout'. The facilities will include for both the Cox Federal 35-2H and Cox Federal 35-1H wells. The anticipated flowline will travel the route of the planned access road and will be SDR-7 for the delivery of hydrocarbon liquids to a central delivery point which will remain on surface. Expected length of this line is approximately 3,000'. A flowline will leave the Cox Federal 35-1H wellpad and enter the Cox Federal 35-2H wellpad via the access road and tie into the

DEC 02 2013

facilities for the Cox Federal 35-1H that are located on the Cox Federal 35-2H wellpad. Produced water will be stored and hauled or trucked to a disposal facility. Gas will be delivered via a high pressure 4" pipeline and will be buried below surface. The anticipated gas pipeline company is DPC. See attached Pipeline Route Plat.

Water Supply for Drilling/Completion:

Water sources will be as follows:

- A. Brine Water – Wassurhund Water Station in Buckeye or Eagle Water Station in Hobbs.
- B. Fresh Water – Arkansas Junction (2 mi east of 529 on 62/180) or Marathon Water Station (Marathon Road west of junction of 529 and 62/180).
- C. Approximately 35 500 bbl mobile Frac Tanks will be used for completion. A 'Frac Pond' will not be used.

Construction Materials:

All materials used will be from a native borrow source or as otherwise permitted by the regulatory agency and coordinated by Energen and Construction Contractor representatives.

Methods of Handling Waste:

- A. A closed loop system is anticipated to be used for the storage of drill fluids and drill cuttings.
- B. Fluids and cuttings will be hauled off location once TD is reached and the drilling rig is released.
- C. Flowback tanks will be used during the completion portion of the well with all fluids being hauled off location.
- D. Current laws pertaining to the storage and disposal of human waste will be observed.
- E. All other waste such as paper, plastic, and "junk" will be stored in a container on the wellsite and hauled to the nearest approved landfill area.

Ancillary Facilities: No other campsite, airstrip, or other facilities will be constructed for the drilling operations of the Cox Federal 35-2H.

Wellsite Layout:

- A. The planned wellpad size is 375' X 375'. A closed-loop system will be used.
- B. A 600' X 600' area has been staked and flagged.
- C. An accompanying NMOC form C-102 along with wellpad layout, cut & fill diagrams, and surveyors maps have been included within the APD pkg for reference.

Reclamation of Surface:

- 1. Material will be removed by conventional methods and the topsoil stockpiled on the upper NW corner of the wellpad. Unused portions of the wellpad during production operations will be adequately reclaimed and monitored as outlined in the Interim Reclamation Plan and COA's.

Remaining topsoil and caliche will be placed and/or stored within the confines of the interim reclamation area for final reclamation of surface. A portion of the topsoil and caliche will be used for material in the interim reclamation process and will be placed to reclaim to the original or near original contour.

2. When production operations cease, all equipment will be removed, the well plugged and abandoned, and all original caliche and topsoil restored and to natural contour of landscape.
3. Reclamation seed mix as outlined in the COA's will be placed, up to and including but may vary, Seed Mix 2 and Seed Mix 3.
4. Access roads will be reclaimed as outlined in the COA's.
5. Attached Interim Reclamation Plat and Plan to show proposed area.

Surface Ownership:

The surface of the proposed wellpad location is located on Bureau of Land Management (BLM) located in Lea County, NM Carlsbad Field Office.

Other Information:

The topography in general consists of small rolling hills to flat terrain with Creosote, Mesquite, Javelina Brush, and native grass. Cultural resource management is conducted and directed out of the BLM CFO.

Bond Coverage:

Bond Coverage is NM2707.

Proposed Interim Reclamation:

Cox Federal 35-2H

During production operations, interim reclamation will be done according to the plan approved by the Carlsbad BLM Field Office. Energen Resources will submit Sundry Notices and Reports on Wells (NOI) on Form 3160-5 prior to conducting these operations.

A plat depicting the planned area of reclamation during production operations will be provided showing any dimensions in relation to the reclaimed area(s) and production facilities.

If any disturbance is required for wellwork or recompletion operations, appropriate protocol will be followed as outlined in the Interim Reclamation Plan and Carlsbad BLM Field Office.

During reclamation, removed caliche will be used for the repair and maintenance of roads, fire walls, etc. to aide in the re-vegetating efforts of reclamation. Topsoil will be placed in reclamation areas to facilitate seed germination. The topsoil will be place to or as near as possible the natural landscape/topography.

A photo record will be made prior to reclamation and after reclamation has begun. An updated photo record will be made after each growing season for 3 years after the reclamation start date at the end of each growing season. After the first three years, a photo record will be made each 5th year after reclamation began up to the abandonment of the well. Points of transect will be determined during the interim reclamation onsite in order to identify the points of photography for the record.

Planned Seed Mix is 2 and 3, unless directed otherwise by the Carlsbad BLM Field Office. Seed Mix 2 will be used in sandy soils. Seed Mix 3 will be used for shallow soils.

Seed will be evenly and uniformly distributed over disturbed area. A depth regulator and drill will be used to ensure proper depth of seed placement. Where drilling is not possible and broadcast method will be used, the soil raked or chained to cover seed. When broadcasting, the lb/acre will be increased by 100%. Seeding will continue until a satisfactory cover is established.

Seed Mix 2 (sandy sites):

Sand Dropseed (<i>Sporobolus cryptandrus</i>)	1.0 lb/acre
Sand Love Grass (<i>Eragrostis trichodes</i>)	1.0 lb/acre
Plains Bristlegrass (<i>Setaria macrostachya</i>)	2.0 lb/acre

Seed Mix 3 (shallow sites):

Plains Bristlegrass (<i>Setaria macrostachya</i>)	1.0 lb/acre
Green Spangletop (<i>Leptochloa dubia</i>)	2.0 lb/acre
Side Oats Grama (<i>Bouteloua curtipendula</i>)	5.0 lb/acre

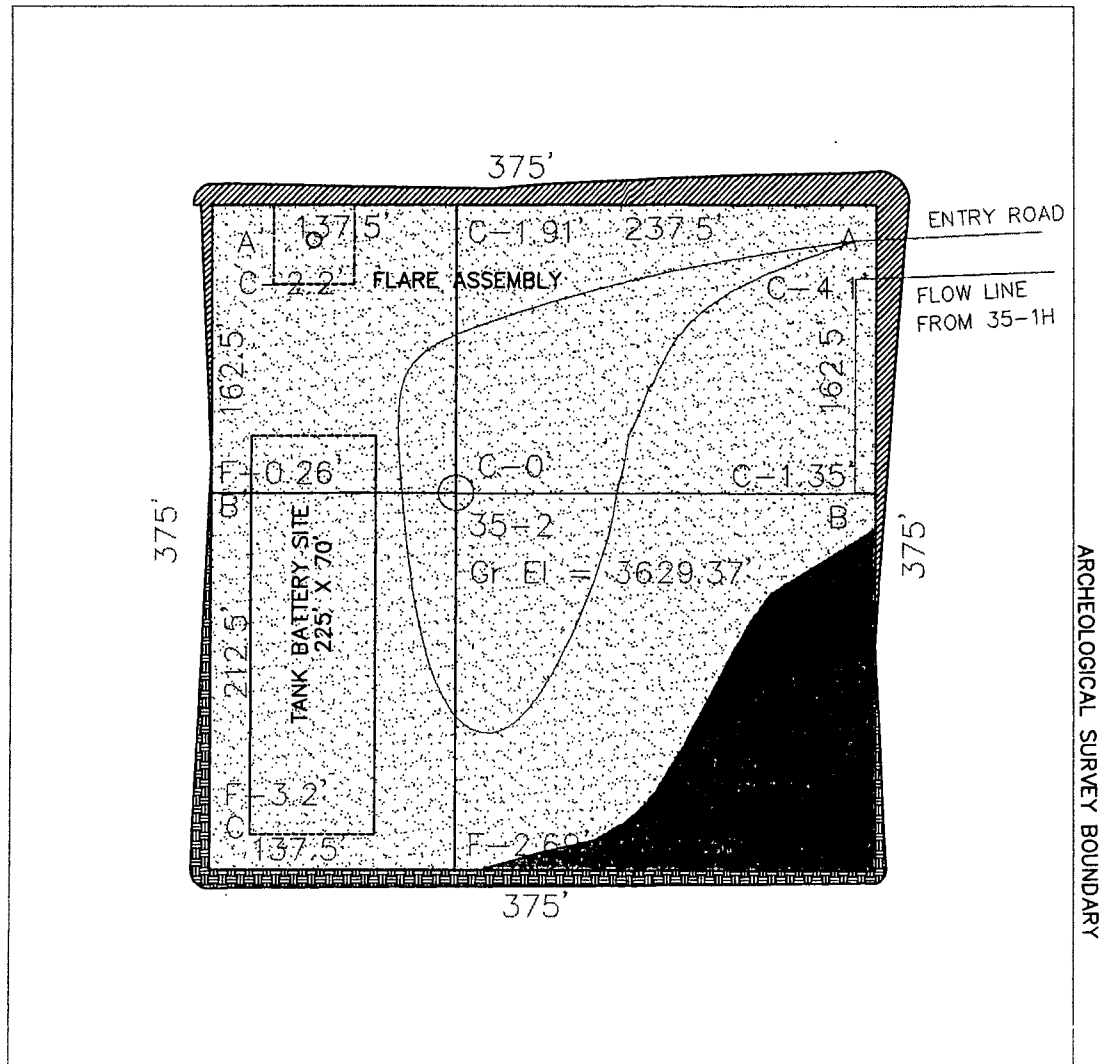
WELL FLAG
 LAT: 32°16'26.3257"
 LON: 103°23'40.7199"

ENERGEN RESOURCES CORPORATION
 COX-FEDERAL 35-2H
 200 FSL & 2400 FEL
 SECTION 35

T-23-S, R-32-E
 LEA COUNTY, NEW MEXICO

NOTES:

FINISHED PAD ELEVATION; 3629.37'
 GROUND ELEVATION 3629.37' NAVD 88



SECTION 35

T-23-S
 R-32-E

CONSTRUCTION ZONE
 600' X 600' AREA
 PROPOSED LEASE ROAD

TOTAL LENGTH OF NEW ROAD = 2832.75'

Basis of Bearing is SPC NAD 83 NEW MEXICO EAST

DIRT WORK CALCULATIONS

ENERGEN RESOURCES CORPORATION

COX FEDERAL 35-2H

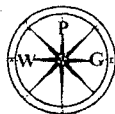
Location Pad Calculations
 T-23-S, R-32-E
 LEA COUNTY, NEW MEXICO.



0 500' 1000'

FILE: T:\PROJECTS\NEW MEXICO\LEA\T23S R32E.DWG WDF13-1156-00

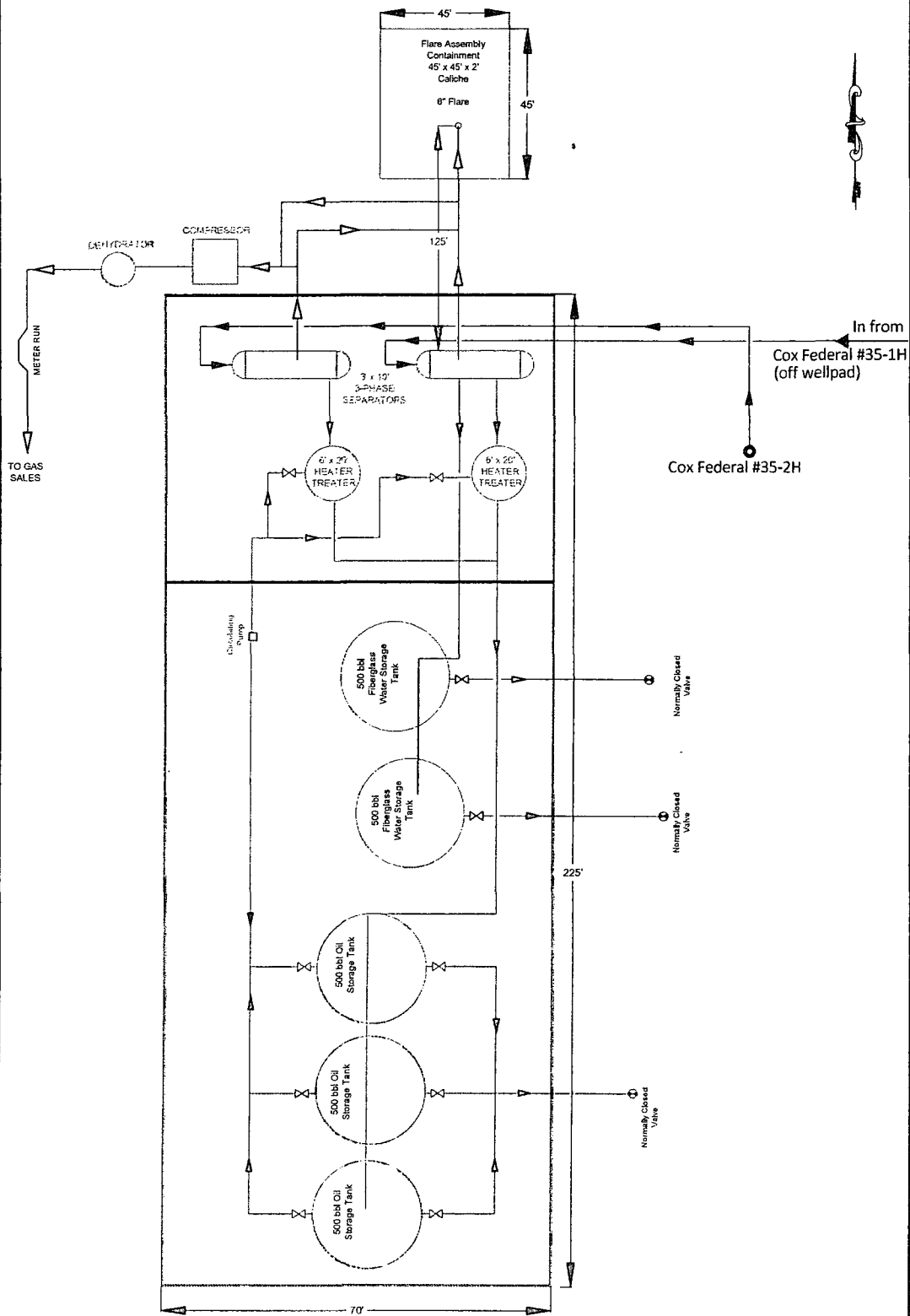
Watson
 Professional
 Group Inc



P.O. DRAWER 11186
 MIDLAND, TEXAS 79702
 (432) 520-9200
 FAX (432) 520-9212
 www.watsongroup.com

CONSULTING ENGINEERS, LAND SURVEYORS & PLANNERS

850.00'



**COX FEDERAL
TANK BATTERY**
Lea COUNTY, NEW MEXICO

Engineer:	NOT TO SCALE	Date Printed: 4/11/2013	Revised by:	Drafted by: G. LARKE
-----------	--------------	----------------------------	-------------	-------------------------



Operator Certification

I hereby certify that I, or someone under my direct supervision, have inspected the drill site and access route proposed herein; that I am familiar with the conditions which currently exist; that I have full knowledge of state and Federal laws applicable to this operation; that the statements made in this APD package are, to the best of my knowledge, true and correct; and that the work associated with the operations proposed herein will be performed in conformity with this APD package and the terms and conditions under which it is approved. I also certify that I, or the company I represent, am responsible for the operations conducted under this application. These statements are subject to the provisions of 18 U.S.C. 1001 for the filing of false statements.

Executed this 7th day of OCTOBER, 2013

Name TOM S. CARRENS

Position Title Drilling Supt.

Address 3300 North A Street Bldg. 4, Suite 100 Midland, TX 79705

Telephone (432) 687-1155

Field Representative (if not above signatory) —

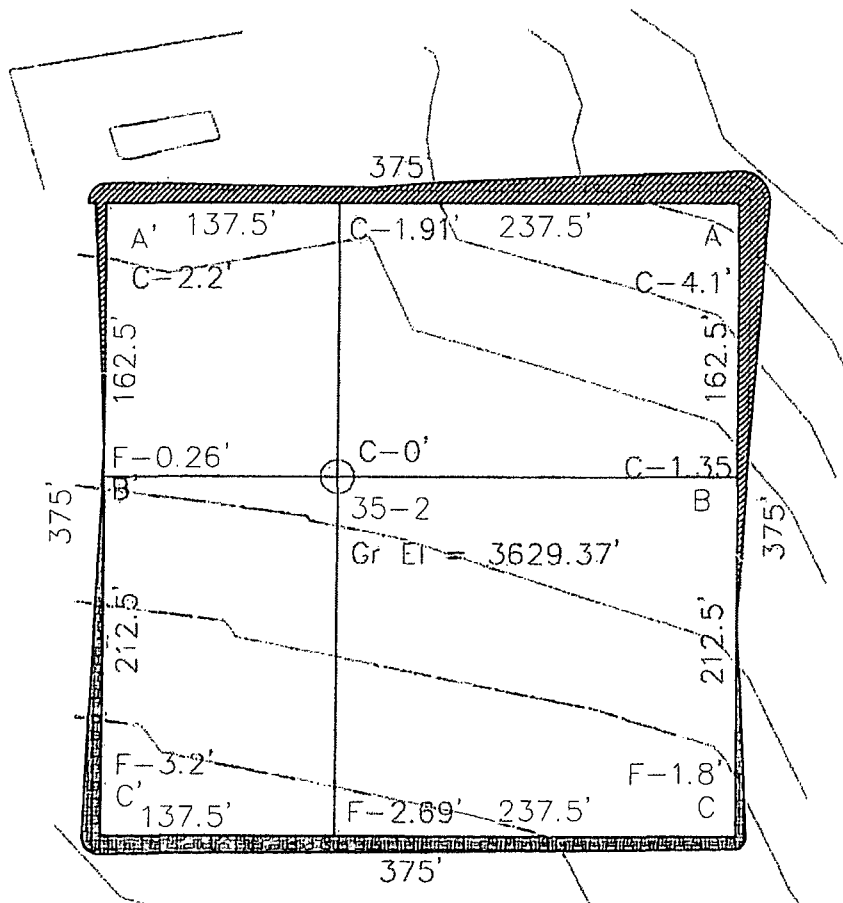
Address (if different from above) —

Telephone (if different from above) —

E-mail (optional) —

SKETCH PLAT

ENERGEN RESOURCES CORPORATION
 COX-FEDERAL 35-2H
 200 FSL & 2400 FEL
 SECTION 35
 T-23-S, R-32-E
 LEA COUNTY, NEW MEXICO
 FINISHED PAD ELEVATION; 3629.37'
 GROUND ELEVATION 3629.37 NAVD 88



Calculate Cut volume = 3585 Cu Yds
 Calculate Fill Volume = 3640 Cu Yds

SECTION 35
 T-23-S
 R-32-E

CONSTRUCTION ZONE
 500' X 500' AREA
 PROPOSED LEASE ROAD

TOTAL LENGTH OF NEW ROAD = 2832.75'

Basis of Bearing is SPC NAD 83 NEW MEXICO EAST

0 500' 1000'

FILE/I/PROJECTS/NEW MEXICO/LEA/T23S R32E.DWG NO. 13-1156-00

Watson
Professional
Group Inc



D. S. DAWSON, LLC
 MCKINNEY, TEXAS 75102
 (972) 412-2000
 FAX (972) 412-2002
 www.ds-dawson.com

CONSULTING ENGINEERS, LAND SURVEYORS & PLANNERS

DIRT WORK CALCULATIONS

ENERGEN RESOURCES CORPORATION

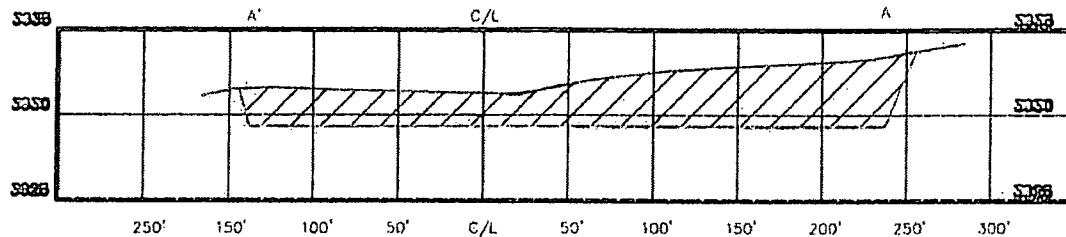
COX FEDERAL 35-2H

Location Pad Calculations
 T-23-S, R-32-E
 LEA COUNTY, NEW MEXICO.

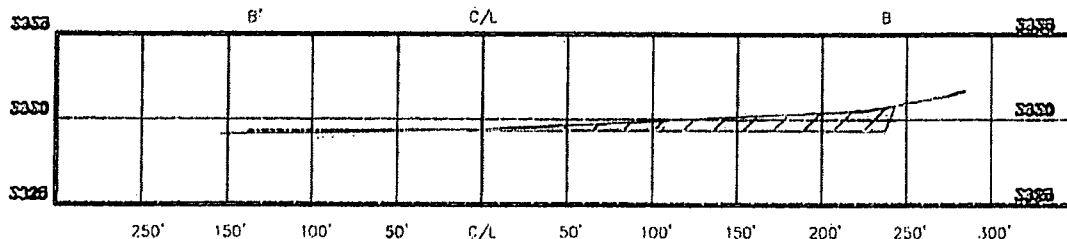
SKETCH PLAT

ENERGEN RESOURCES CORPORATION
 COX-FEDERAL 35-2H
 200 FSL & 2400 FEL
 SECTION 35
 T-23-S, R-32-E
 LEA COUNTY, NEW MEXICO
 FINISHED PAD ELEVATION; 3629.37'
 GROUND ELEVATION 3629.37 NAVD 88

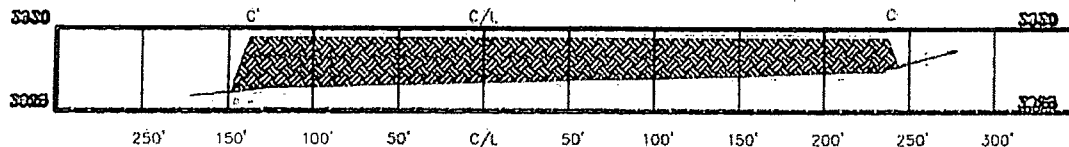
"A" (NORTH) PROFILE



"B" (CENTER) PROFILE



"C" (SOUTH) PROFILE



0 500' 1000'

FILE: I:\PROJECTS\NEW MEXICO\LEA\T23S R32E.DWG

LEGEND

— EXISTING GRADE
 - - - FINISHED GRADE

CONSTRUCTION ZONE
 600' X 600' AREA
 PROPOSED LEASE ROAD

TOTAL LENGTH OF NEW ROAD = 2832.75'

NO# 13-1156-00 Basis of Bearing is SPC NAD 83 NEW MEXICO EAST



CONSULTING ENGINEERS, LAND SURVEYORS & PLANNERS

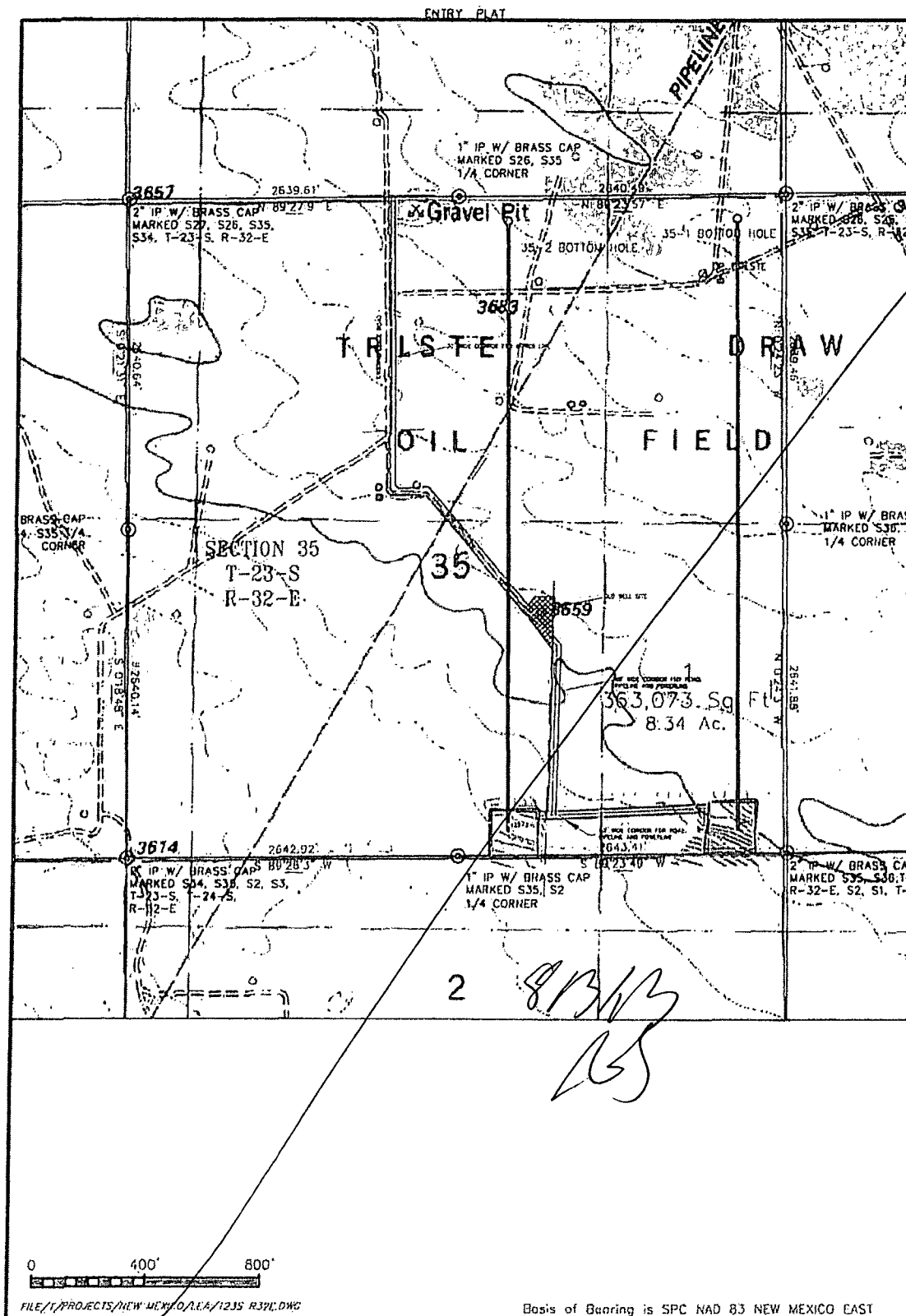
PO BOX 1155
 MIDLAND, TEXAS 79702
 (409) 555-2222
 FAX (409) 555-2222
 website: www.watson.com

LOCATION PAD PROFILES

ENERGEN RESOURCES CORPORATION

COX FEDERAL 35-2H

Location Pad Calculations
 T-23-S, R-32-E
 LEA COUNTY, NEW MEXICO.



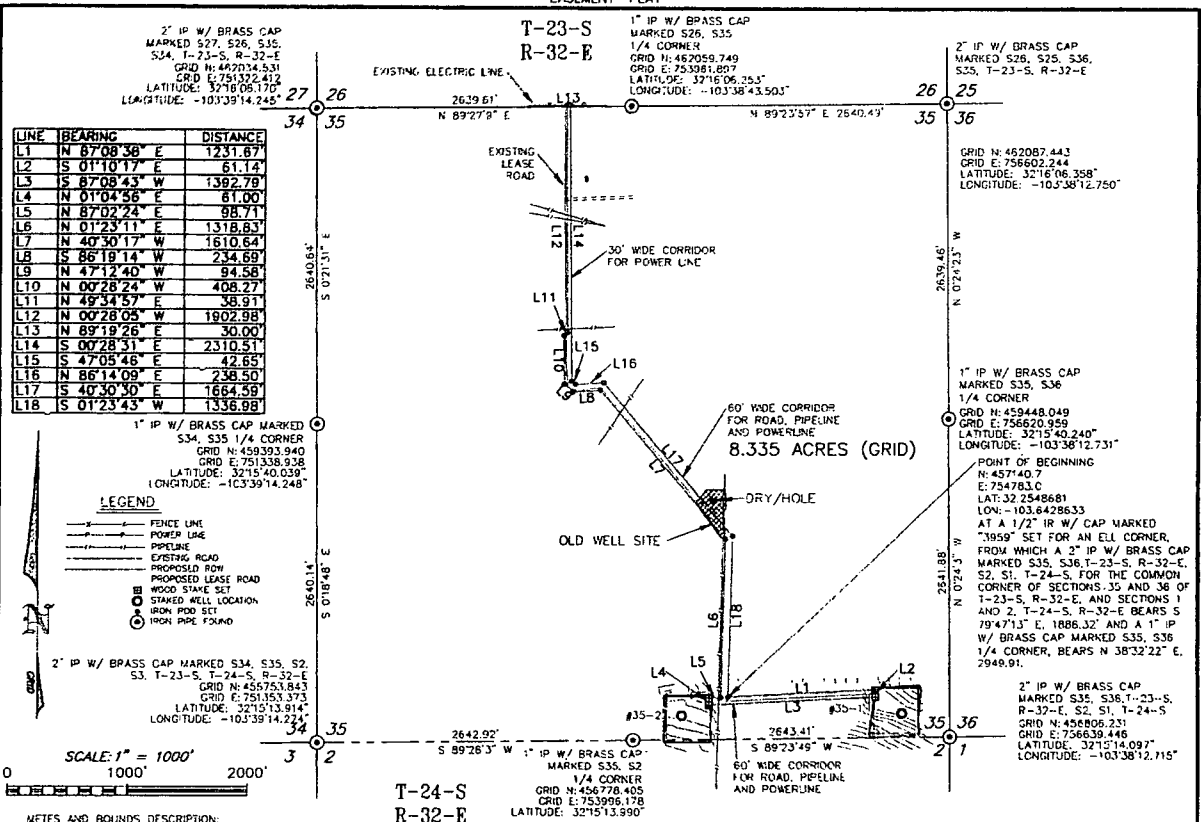
CONSULTING ENGINEERS, LAND SURVEYORS & PLANNERS

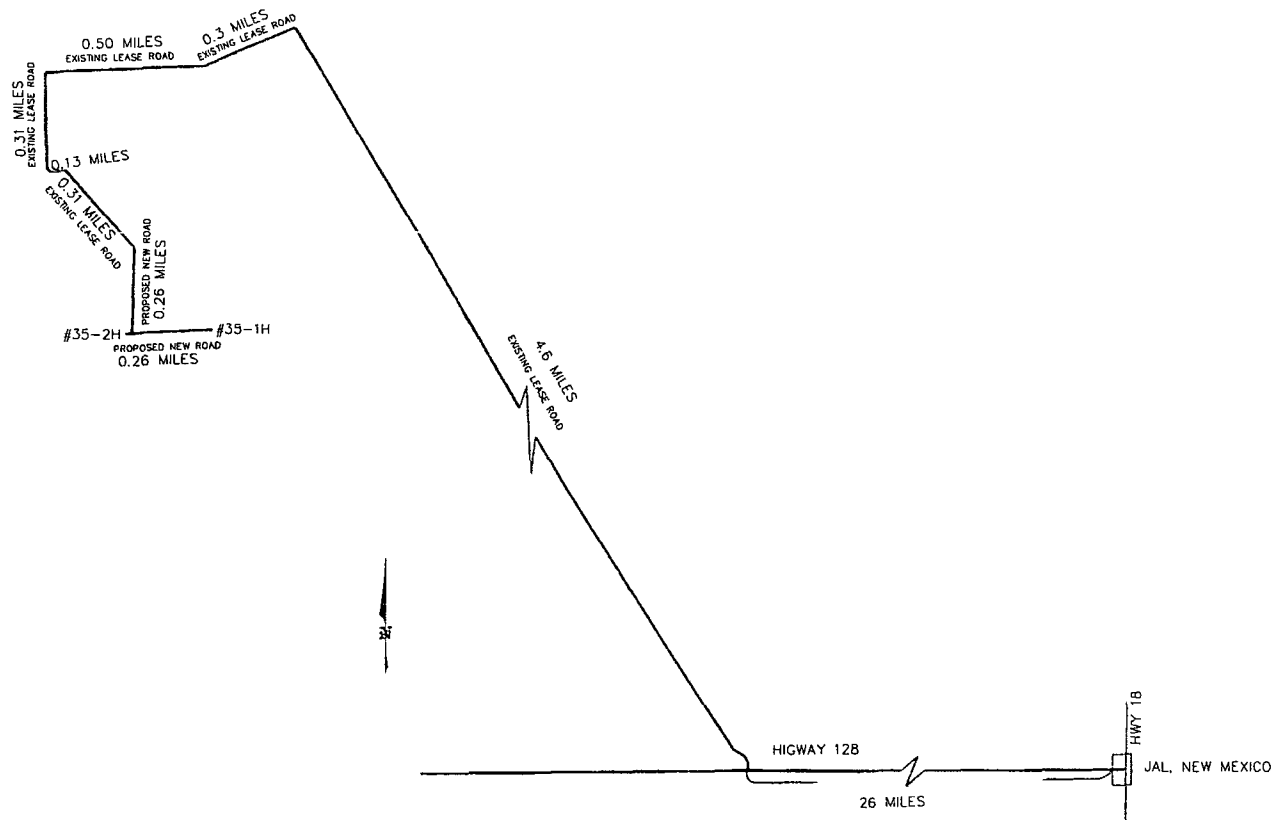
P.O. DRAWER 1166
MIDLAND, TEXAS 79702
(432) 520-9000
FAX (432) 520-9222
www.watsongroup.com

TOPO OF SECTION 35

ENERGEN RESOURCES

SECTION 35
T-23-S, R-32-E
LEA COUNTY, NEW MEXICO.





FILE/T/PROJECTS/NEW MEXICO/LEA/T235 R32E.DWG

Basis of Bearing is SPC NAD 83 NEW MEXICO EAST

atson
Professional
Group Inc



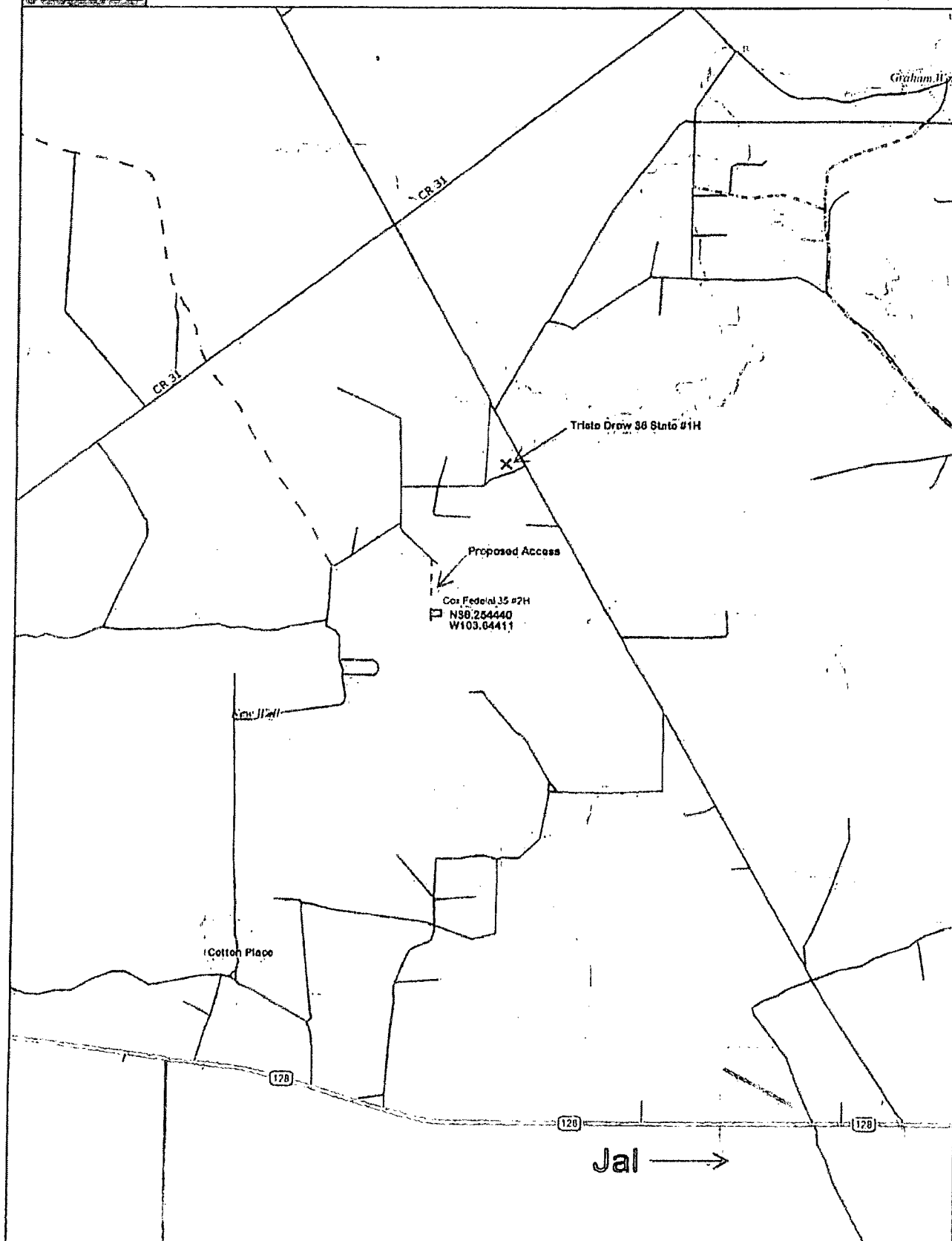
P.O. DRAWER 11186
MIDLAND, TEXAS 79702
(432) 520-9200
FAX (432) 520-9212
www.atson.com

CONSULTING ENGINEERS, LAND SURVEYORS & PLANNERS

ROUTE MAP TO COX FEDERAL 35-1 & 2H

ENERGEN RESOURCES

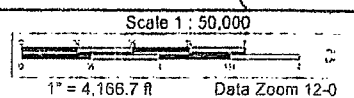
ROUTE MAP OF ROADS FROM HWY 128 TO WELLS
T-23-S, R-32-E
LEA COUNTY, NEW MEXICO.



Data use subject to license.

© DeLorme. Topo USA® 8.

www.delorme.com



626

627

628

629000 m E

72

71

70°N

32°15'

68

450000
FEET

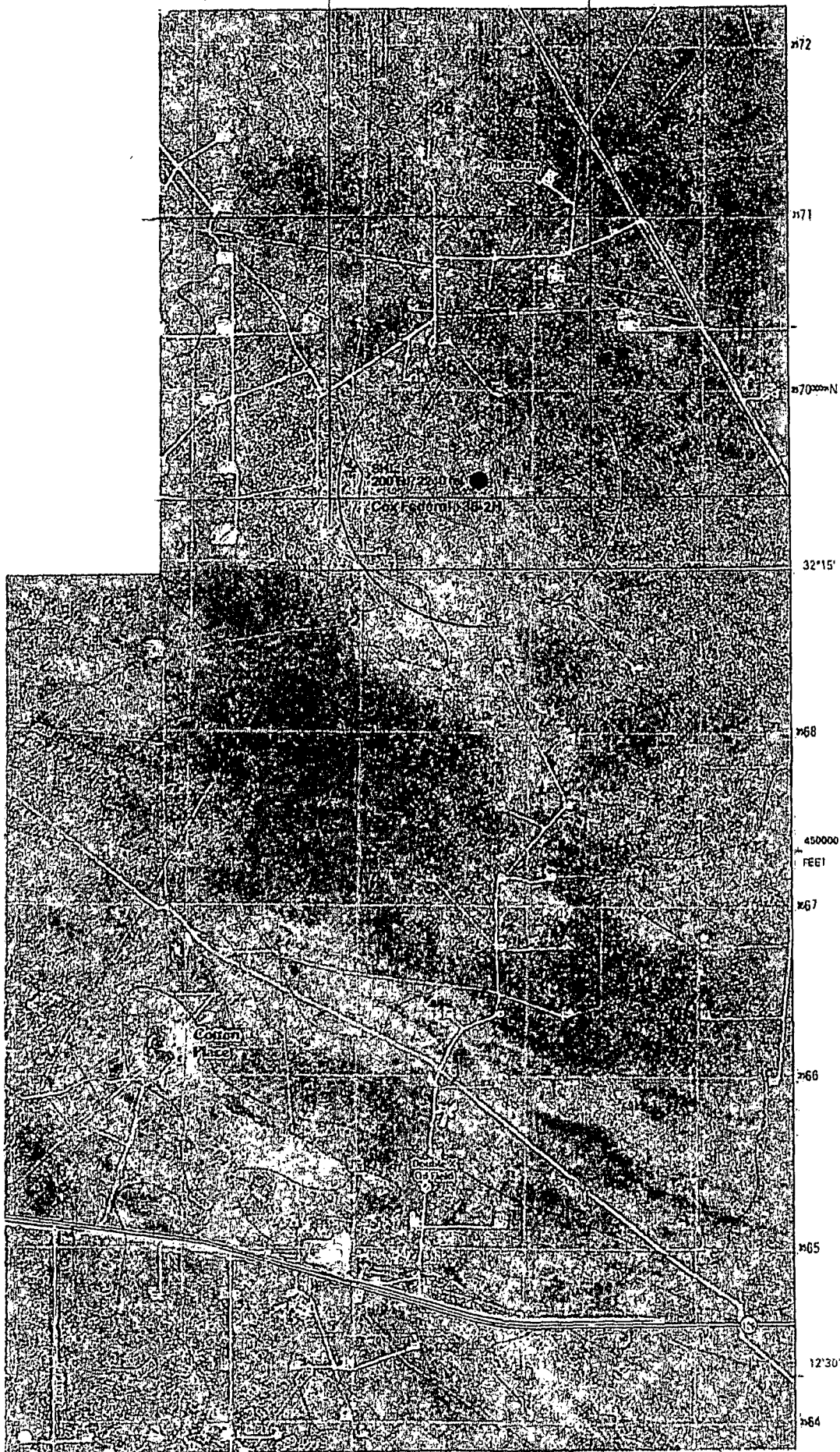
67

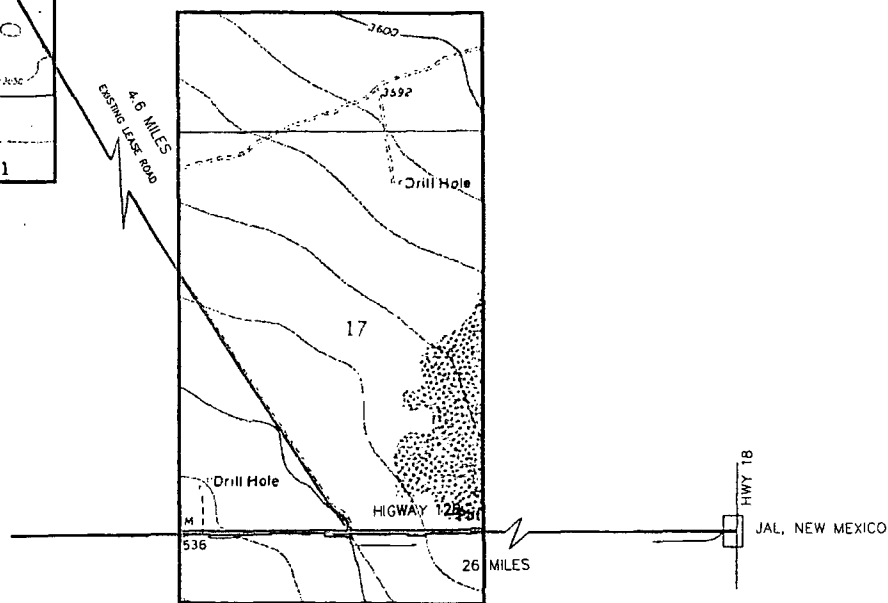
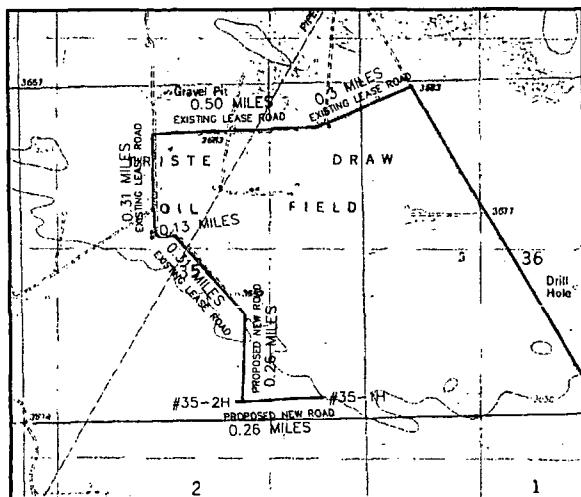
66

65

12°30'

64





FILE/T/PROJECTS/NEW MEXICO/LEA/T23S R32E.DWG

Basis of Bearing is SPC NAD 83 NEW MEXICO EAST

**Watson
Professional
Group Inc**



P.O. DRAWER 11086
MIDLAND, TEXAS 79702
(432) 520-9200
FAX (432) 520-9212
www.watsongroup.com

CONSULTING ENGINEERS, LAND SURVEYORS & PLANNERS

ROUTE MAP TO COX FEDERAL 35-1 & 2H

ENERGEN RESOURCES

ROUTE MAP OF ROADS FROM HWY 128 TO WELLS
T-23-S, R-32-E
LEA COUNTY, NEW MEXICO.

WO #13-1155 AND 1156

R32E

