

NOV 27 2013

RECEIVED

NOV 27 2013

RECEIVED

1825 N. FRANCH DR., HOBBS, NM 88240
Phone: (505) 383-6181 Fax: (505) 383-0720DISTRICT II
811 S. FIRST ST., ARTESIA, NM 88210
Phone: (505) 746-1263 Fax: (505) 746-0720DISTRICT III
1000 RIO BRAZOS RD., AZTEC, NM 87410
Phone: (505) 334-6178 Fax: (505) 334-6170DISTRICT IV
1220 S. ST. FRANCIS DR., SANTA FE, NM 87505
Phone: (505) 476-3460 Fax: (505) 476-3462

State of New Mexico
Energy, Minerals & Natural Resources Department
OIL CONSERVATION DIVISION
1220 SOUTH ST. FRANCIS DR.
Santa Fe, New Mexico 87505

Form C-102
Revised August 1, 2011
Submit one copy to appropriate
District Office

☐ AMENDED REPORT**WELL LOCATION AND ACREAGE DEDICATION PLAT**

API Number 30-025-40570	Pool Code 96674	Pool Name Triple X; Bone Spring, West
Property Code 39209	Property Name EATA FAJITA STATE	Well Number 2H
GRID No. 217955	Operator Name COG PRODUCTION LLC	Elevation 3589.3'

Surface Location

UL or lot No.	Section	Township	Range	Lot Idn	Feet from the	North/South line	Feet from the	East/West line	County
N	8	24-S	33-E		420	SOUTH	2105	WEST	LEA

Bottom Hole Location If Different From Surface

UL or lot No.	Section	Township	Range	Lot Idn	Feet from the	North/South line	Feet from the	East/West line	County
C	8	24-S	33-E		330	NORTH	2073	WEST	LEA

Dedicated Acres 160	Joint or Infill	Consolidation Code	Order No.
------------------------	-----------------	--------------------	-----------

NO ALLOWABLE WILL BE ASSIGNED TO THIS COMPLETION UNTIL ALL INTERESTS HAVE BEEN CONSOLIDATED
OR A NON-STANDARD UNIT HAS BEEN APPROVED BY THE DIVISION

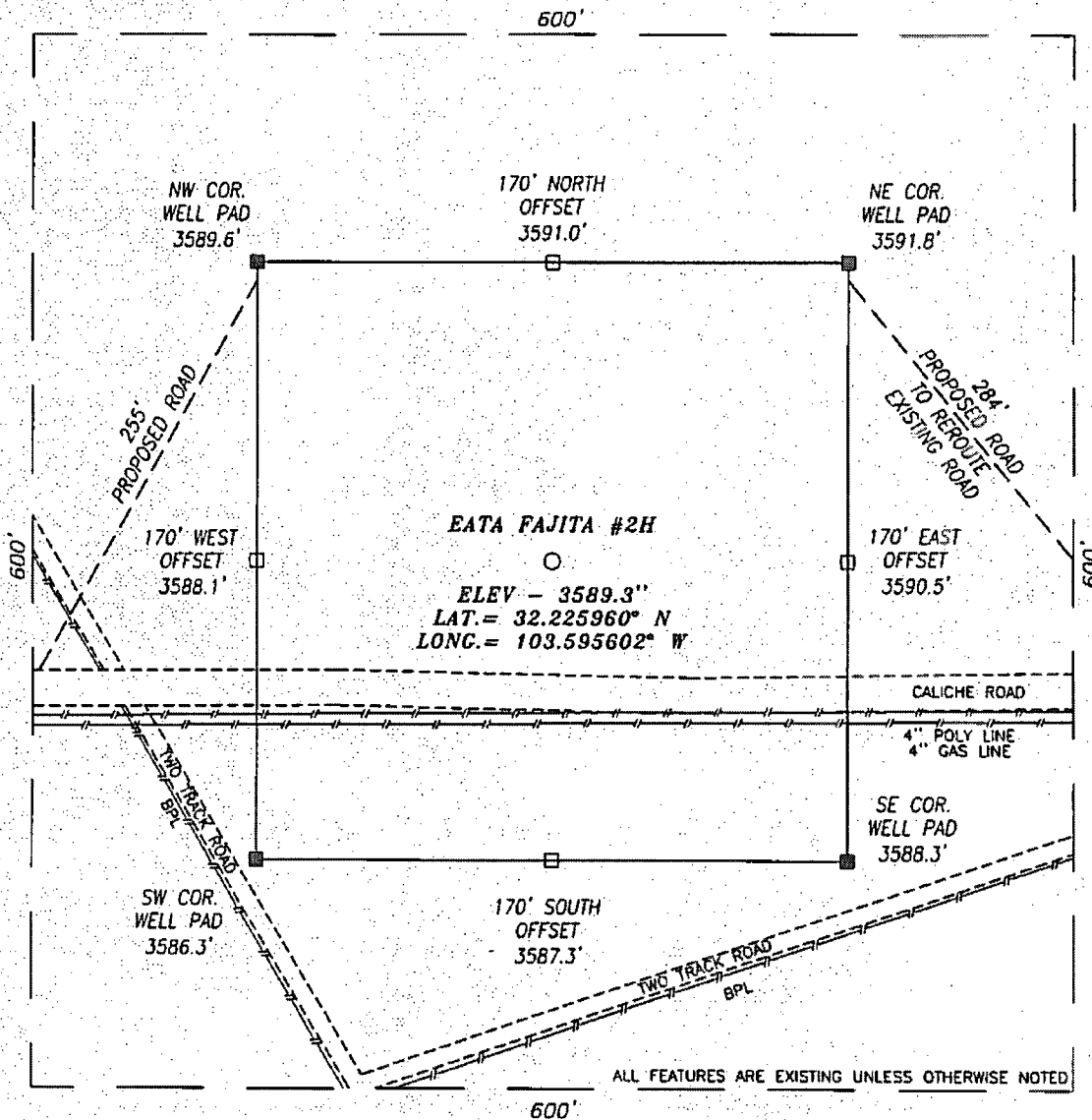
<p>2073'</p> <p>Y=451562.4 N X=727316.7 E</p> <p>NAD 27 <u>PROPOSED BOTTOM HOLE LOCATION</u> Y=451236.4 N X=728068.3 E LAT.=32.238413° N LONG.=103.595710° W</p> <p>NAD 27 <u>SURFACE LOCATION</u> Y=446706.3 N X=728133.0 E LAT.=32.225960° N LONG.=103.595602° W</p> <p>Y=446282.0 N X=727353.1 E</p> <p>2105'</p>	<p>330'</p> <p>B.H.</p> <p>GRID AZ. - 359°10'58" HORZ. DIST. - 4,530.6'</p> <p>Y=451569.5 N X=728640.3 E</p> <p>Y=446289.1 N X=728675.1 E</p> <p>S.L. 420'</p>	<p>OPERATOR CERTIFICATION</p> <p>I hereby certify that the information herein is true and complete to the best of my knowledge and belief, and that this organization either owns a working interest or unleased mineral interest in the land including the proposed bottom hole location or has a right to drill this well at this location pursuant to a contract with an owner of such mineral or working interest, or to a voluntary pooling agreement or a compulsory pooling order heretofore entered by the division.</p> <p><i>Melanie Parker</i> 11/20/13 Signature Date <i>Melanie J. Parker</i> Printed Name mparker@concho.com E-mail Address</p> <p>SURVEYOR CERTIFICATION</p> <p>I hereby certify that the well location shown on this plat was plotted from field notes of actual surveys made by me or under my supervision, and that the same is true and correct to the best of my belief.</p> <p>SEPTEMBER 6, 2013 Date of Survey</p> <p>Signature & Seal of Professional Surveyor</p> <p><i>Chad L. Hargrow</i> 9/20/13 Certificate No. CHAD HARGROW 17777 W.O. # 13-620 DRAWN BY: TL</p>
--------------------------------------------------------------------------------------------------------------------------------------------------------------------------------------------------------------------------------------------------------------------------------------------------------------------------------------------------------------------------	--------------------------------------------------------------------------------------------------------------------------------------------------------------------------------	-----------------------------------------------------------------------------------------------------------------------------------------------------------------------------------------------------------------------------------------------------------------------------------------------------------------------------------------------------------------------------------------------------------------------------------------------------------------------------------------------------------------------------------------------------------------------------------------------------------------------------------------------------------------------------------------------------------------------------------------------------------------------------------------------------------------------------------------------------------------------------------------------------------------------------------------------------------------------------------------------------------------------------------------------------------------------------------------------------------------------------------------------------------------

DEC 02 2013

SECTION 8, TOWNSHIP 24 SOUTH, RANGE 33 EAST, N.M.P.M.,

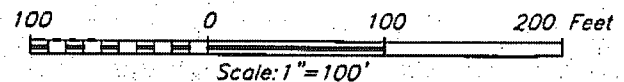
LEA COUNTY

NEW MEXICO



DIRECTIONS TO LOCATION:

HEADING EAST ON HWY 128 TURN LEFT (NORTHWEST) AT MILE MARKER 27 AND GO APPROX. 1.1 MILES; THEN TAKE A RIGHT (NORTH) AND GO APPROX. 0.2 MILE; THEN TURN RIGHT (SOUTHEAST) AND GO APPROX. 0.1 MILE; THEN TURN LEFT (EAST) AND GO APPROX. 0.5 MILE; THEN PROPOSED WELL IS APPROX. 75 FEET NORTH.



HARCROW SURVEYING, LLC

2314 W. MAIN ST, ARTESIA, N.M. 88210

PH: (575) 513-2570 FAX: (575) 746-2158

chad_harcrow77@yahoo.com



COG OPERATING, LLC

EATA FAJITA #2H WELL
LOCATED 420 FEET FROM THE SOUTH LINE
AND 2105 FEET FROM THE WEST LINE OF SECTION 8,
TOWNSHIP 24 SOUTH, RANGE 33 EAST, N.M.P.M.,
LEA COUNTY, NEW MEXICO

SURVEY DATE: 09/06/2013

PAGE: 1 OF 1

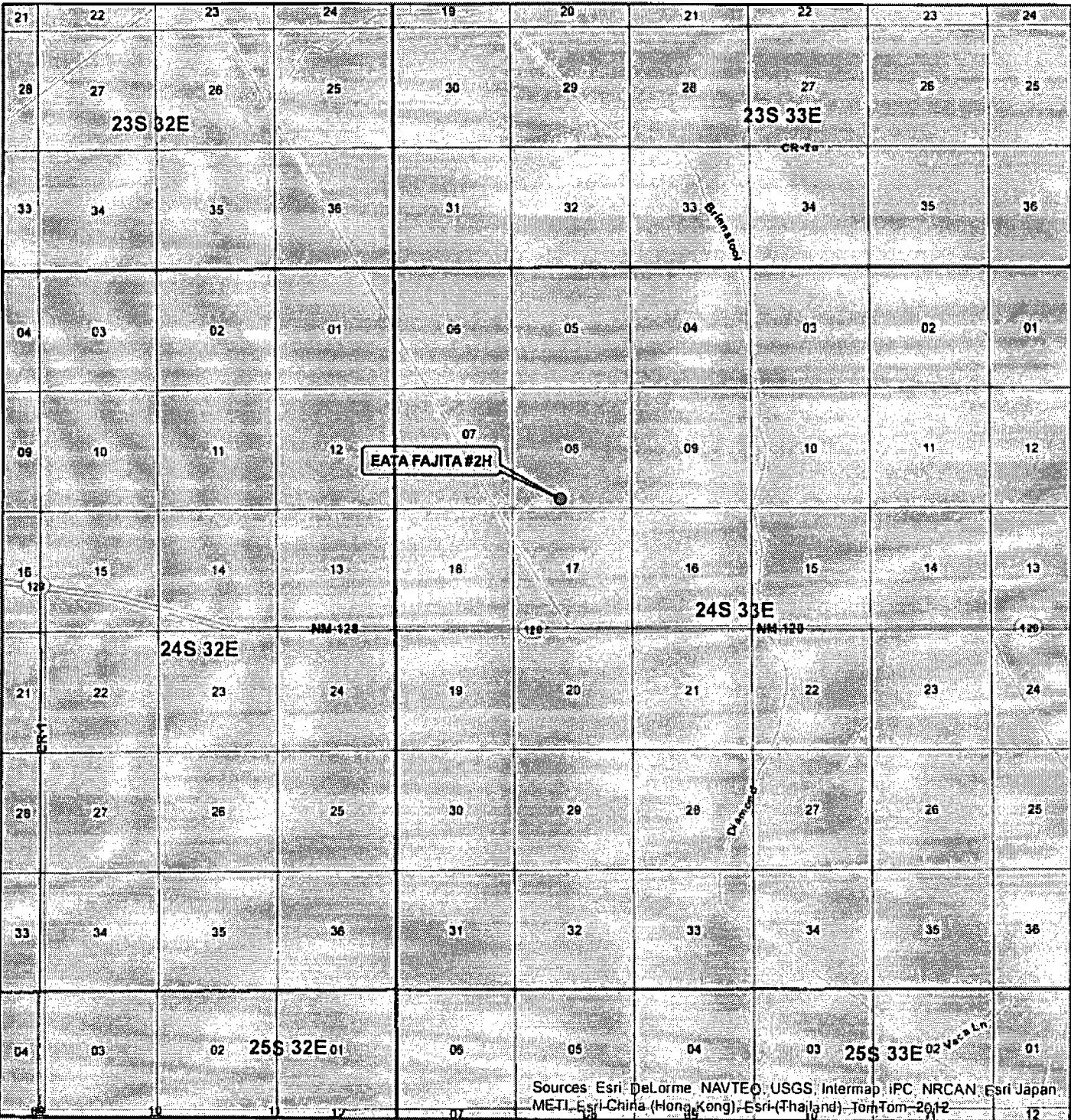
DRAFTING DATE: 09/09/2013

APPROVED BY: CH

DRAWN BY: TL

FILE: 13-620

VICINITY MAP



W.O. # 13-620

1 IN = 6,000 FT

0 0.5 MILES

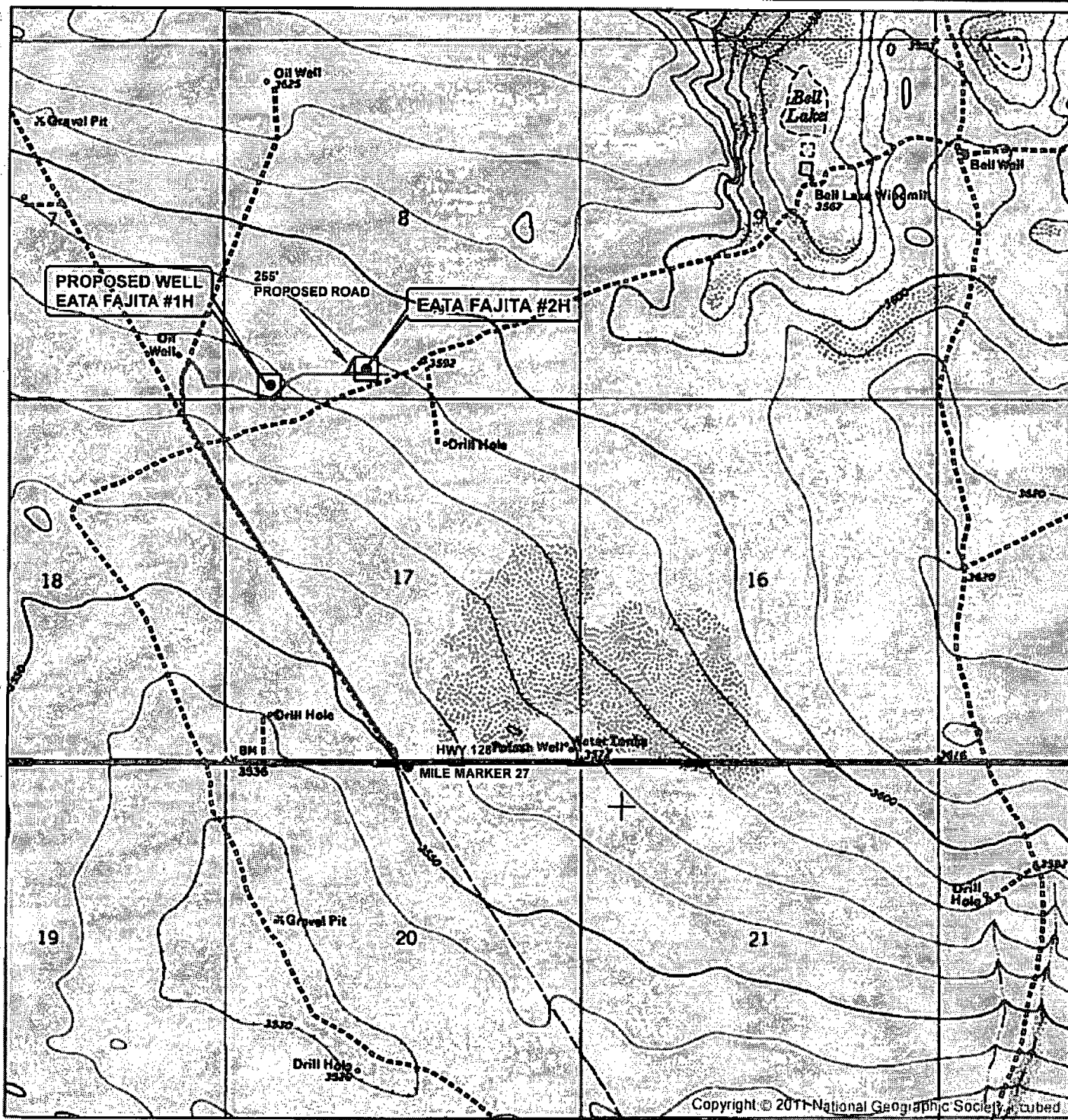
☐ WELL
☐ TOWNSHIP
☐ SECTION

HARCROW SURVEYING, LLC
1107 WATSON, ARTESIA N.M. 88210
PH: (575) 513-2570 FAX: (575) 746-2155
chad_harcrow77@yahoo.com



MAP DATE: 9/9/2013

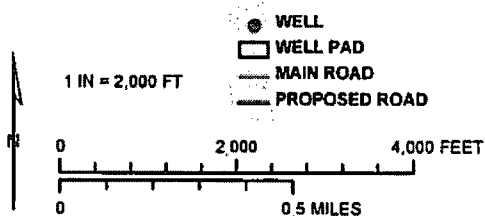
LOCATION VERIFICATION MAP



SEC. 8, TWP. 24 S. RGE. 33 E
 SURVEY: N.M.P.M
 COUNTY: LEA STATE, NEW MEXICO
 DESCRIPTION: EATA FAJITA #2H
 420' FSL, 2105' FWL

ELEVATION: 3589.3'
 OPERATOR: COG OPERATING LLC
 LEASE: EATA FAJITA

W.O. # 13-820

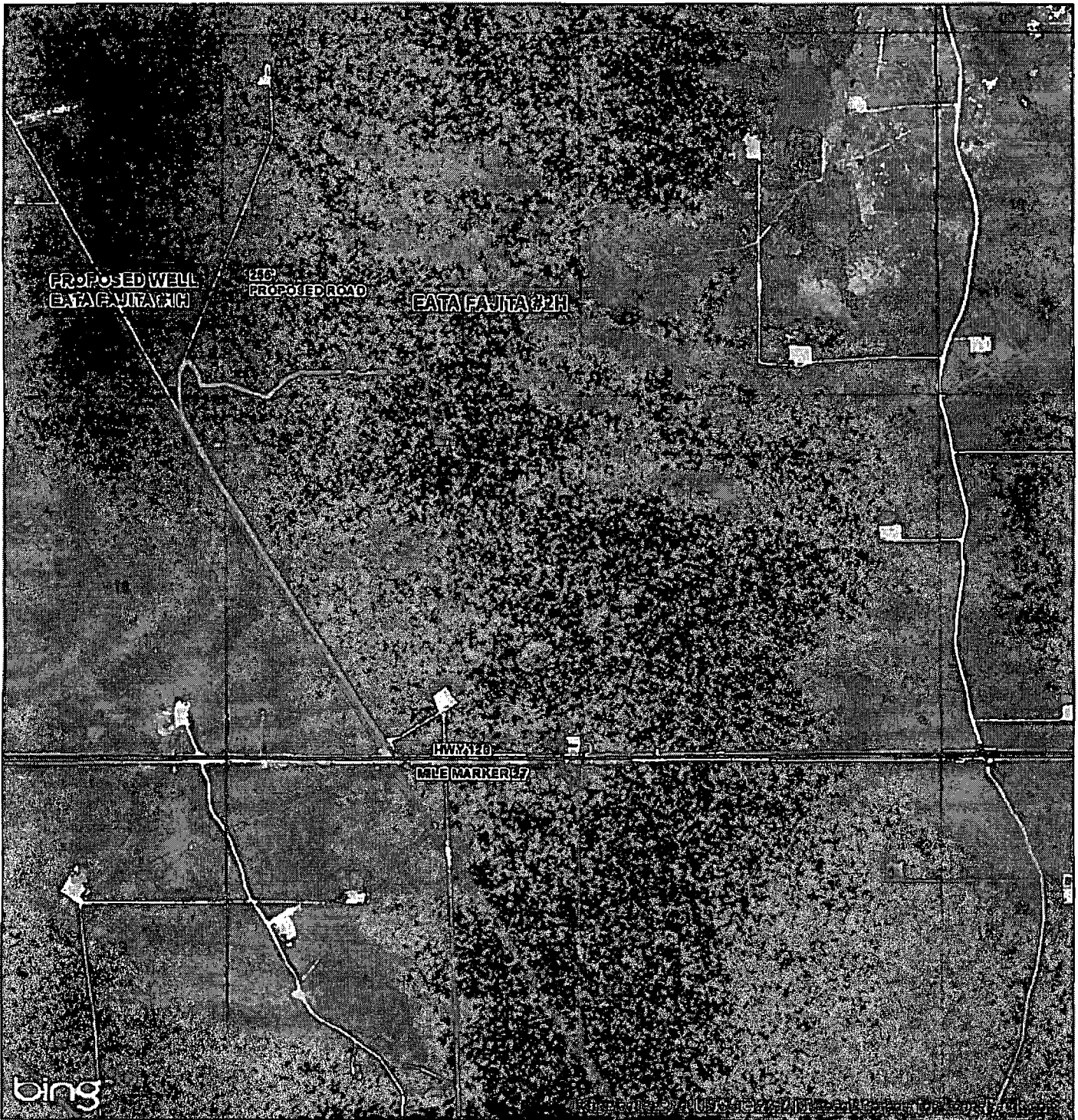


HARCROW SURVEYING, LLC
 1107 WATSON, ARTESIA N.M. 88210
 PH: (575) 513-2570 FAX: (575) 746-2158
 chad_harcrow77@yahoo.com



MAP DATE: 9/9/2013

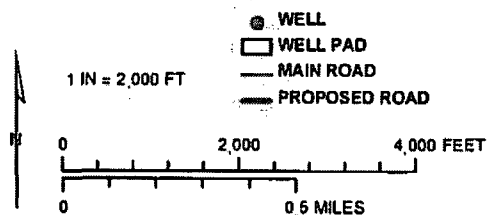
LOCATION VERIFICATION MAP



SEC. 8, TWP. 24 S, RGE. 33 E
 SURVEY: N.M.P.M.
 COUNTY: LEA STATE: NEW MEXICO
 DESCRIPTION: EATA FAJITA #2H
 420' FSL, 2105' FWL

ELEVATION: 3589.3'
 OPERATOR: COG OPERATING LLC
 LEASE: EATA FAJITA

W.O. # 13-620



HARCROW SURVEYING, LLC
 1107 WATSON, ARTESIA N.M. 88210
 PH: (575) 513-2570 FAX: (575) 746-2158
 chad_harcrow77@yahoo.com



MAP DATE: 9/9/2013