

DISTRICT I  
1625 N. French Dr., Hobbs, NM 88240  
Phone: (575) 393-6161 Fax: (575) 393-0720  
DISTRICT II  
811 S. First St., Artesia, NM 88210  
Phone: (575) 748-1283 Fax: (575) 748-9720  
DISTRICT III  
1000 Rio Brazos Road, Aztec, NM 87410  
Phone: (505) 334-6178 Fax: (505) 334-6179  
DISTRICT IV  
1220 S. St. Francis Dr., Santa Fe, NM 87505  
Phone: (505) 476-3460 Fax: (505) 476-3462

State of New Mexico  
Energy, Minerals & Natural Resources Department  
OIL CONSERVATION DIVISION  
1220 South St. Francis Dr.  
Santa Fe, New Mexico 87505

Form C-102  
Revised August 1, 2011  
Submit one copy to appropriate  
District Office

☐ AMENDED REPORT

WELL LOCATION AND ACREAGE DEDICATION PLAT

API Number <b>30-025-41527</b>	Pool Code <b>8559</b>	Pool Name <b>CAPROCK; QUEEN</b>
Property Code <b>303735</b>	Property Name <b>RQU</b>	Well Number <b>320</b>
OGRID No. <b>247128</b>	Operator Name <b>CELERO ENERGY II LP</b>	Elevation <b>4376'</b>

Surface Location

UL or lot No. <b>F</b>	Section <b>30</b>	Township <b>13-S</b>	Range <b>32-E</b>	Lot Idn	Feet from the <b>2180</b>	North/South line <b>NORTH</b>	Feet from the <b>1980</b>	East/West line <b>WEST</b>	County <b>LEA</b>
---------------------------	----------------------	-------------------------	----------------------	---------	------------------------------	----------------------------------	------------------------------	-------------------------------	----------------------

Bottom Hole Location If Different From Surface

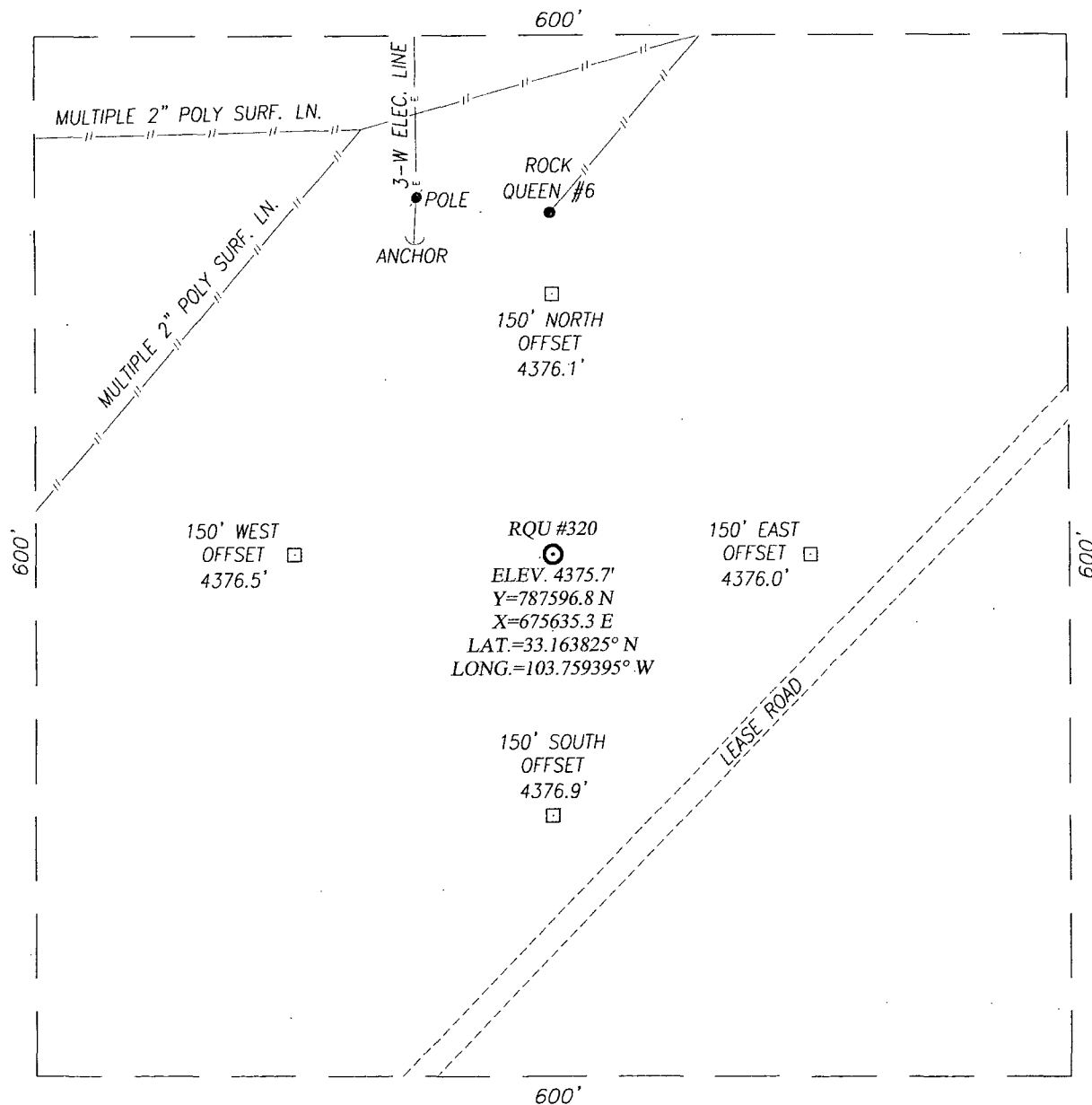
UL or lot No.	Section	Township	Range	Lot Idn	Feet from the	North/South line	Feet from the	East/West line	County
Dedicated Acres <b>40</b>	Joint or Infill	Consolidation Code	Order No.						

NO ALLOWABLE WILL BE ASSIGNED TO THIS COMPLETION UNTIL ALL INTERESTS HAVE BEEN CONSOLIDATED OR A NON-STANDARD UNIT HAS BEEN APPROVED BY THE DIVISION

	<p><b>OPERATOR CERTIFICATION</b></p> <p>I hereby certify that the information herein is true and complete to the best of my knowledge and belief, and that this organization either owns a working interest or unleased mineral interest in the land including the proposed bottom hole location or has a right to drill this well at this location pursuant to a contract with an owner of such mineral or working interest, or to a voluntary pooling agreement or a compulsory pooling order heretofore entered by the division.</p> <p><i>Lisa Hunt</i> 11/25/13 Signature Date</p> <p><i>Lisa Hunt</i> Printed Name</p> <p><i>lhunt@celeryenergy.com</i> E-mail Address</p>
	<p><b>SURVEYOR CERTIFICATION</b></p> <p>I hereby certify that the well location shown on this plat was plotted from field notes of actual surveys made by me or under my supervision, and that the same is true and correct to the best of my belief.</p> <p>OCTOBER 31, 2013</p> <p>Date of Survey</p> <p>Signature and Seal of Professional Surveyor:</p> <p><i>Ronald J. Eidson</i> Professional Surveyor</p> <p>3239</p> <p>Certificate Number: 3239</p> <p>Surveyor: Ronald J. Eidson</p> <p>BKL JWSC W.O.: 13.11.1209</p>

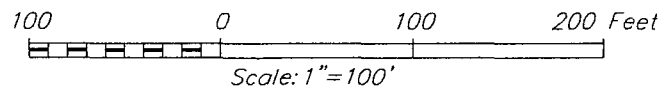
DEC 02 2013

P.M.



#### DIRECTIONS TO LOCATION

FROM THE INTERSECTION OF STATE HIGHWAYS 172 AND 249 (HAGGERMAN CUT-OFF) GO NORTH ON HWY. 172 APPROX. 10.8 MILES; TURN RIGHT AND GO SOUTHEAST APPROX. 2.3 MILES; TURN LEFT AND GO NORTHEAST APPROX. 0.2 MILES; THE LOCATION STAKE IS APPROX. 210 FEET TO THE NORTH.



## CELERO ENERGY II LP

### RQU #320 WELL

LOCATED 2180 FEET FROM THE NORTH LINE  
AND 1980 FEET FROM THE WEST LINE OF SECTION 30,  
TOWNSHIP 13 SOUTH, RANGE 32 EAST, N.M.P.M.,  
LEA COUNTY, NEW MEXICO

Survey Date: 10/31/13

CAD Date: 11/12/13

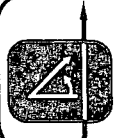
Drawn By: BKL

W.O. No.: 13111209

Rev: .

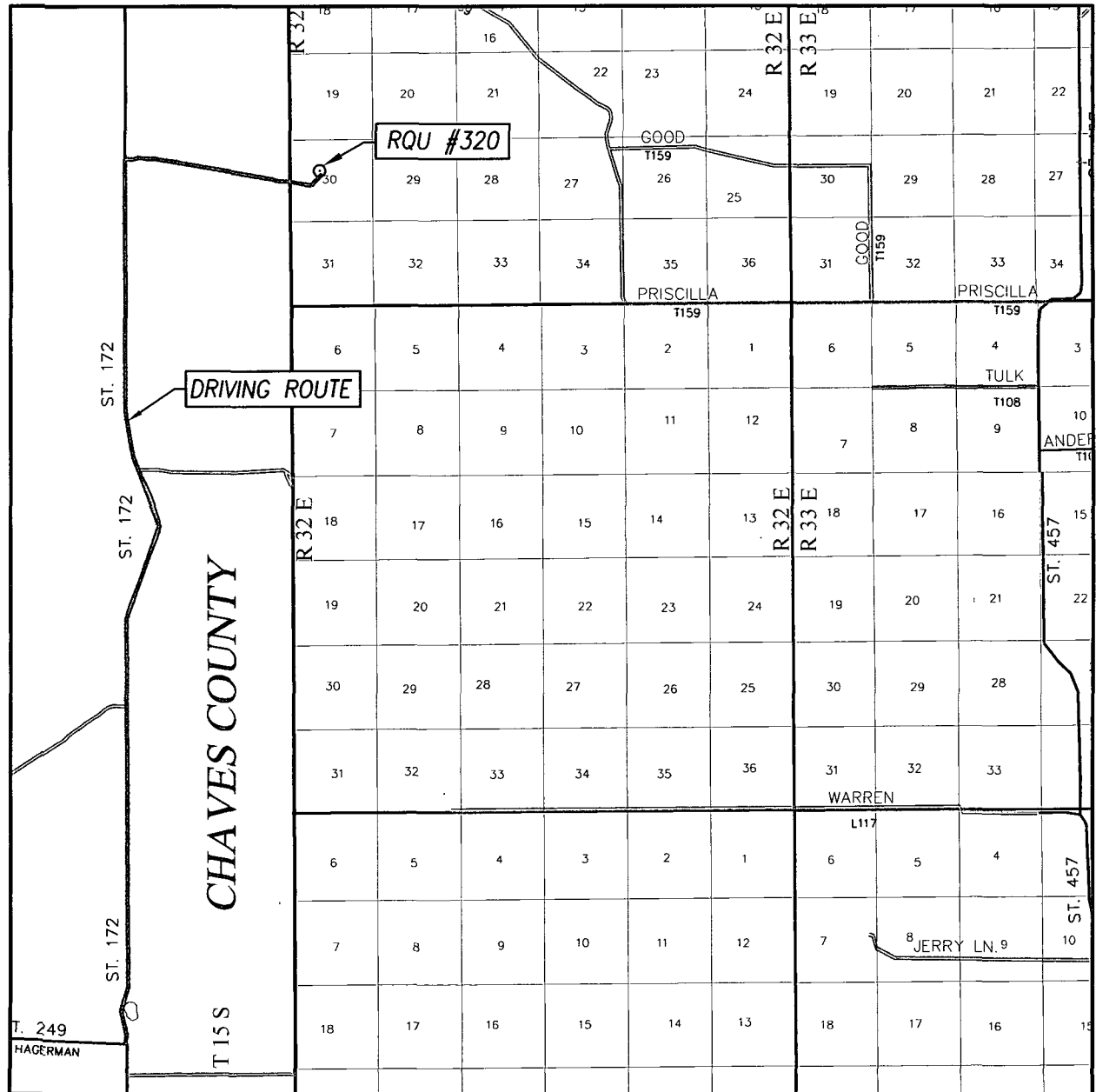
Rel. W.O.:

Sheet 1 of 1



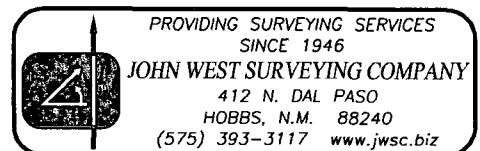
PROVIDING SURVEYING SERVICES  
SINCE 1946  
**JOHN WEST SURVEYING COMPANY**  
412 N. DAL PASO  
HOBBS, N.M. 88240  
(575) 393-3117 [www.jwsc.biz](http://www.jwsc.biz)

# VICINITY MAP

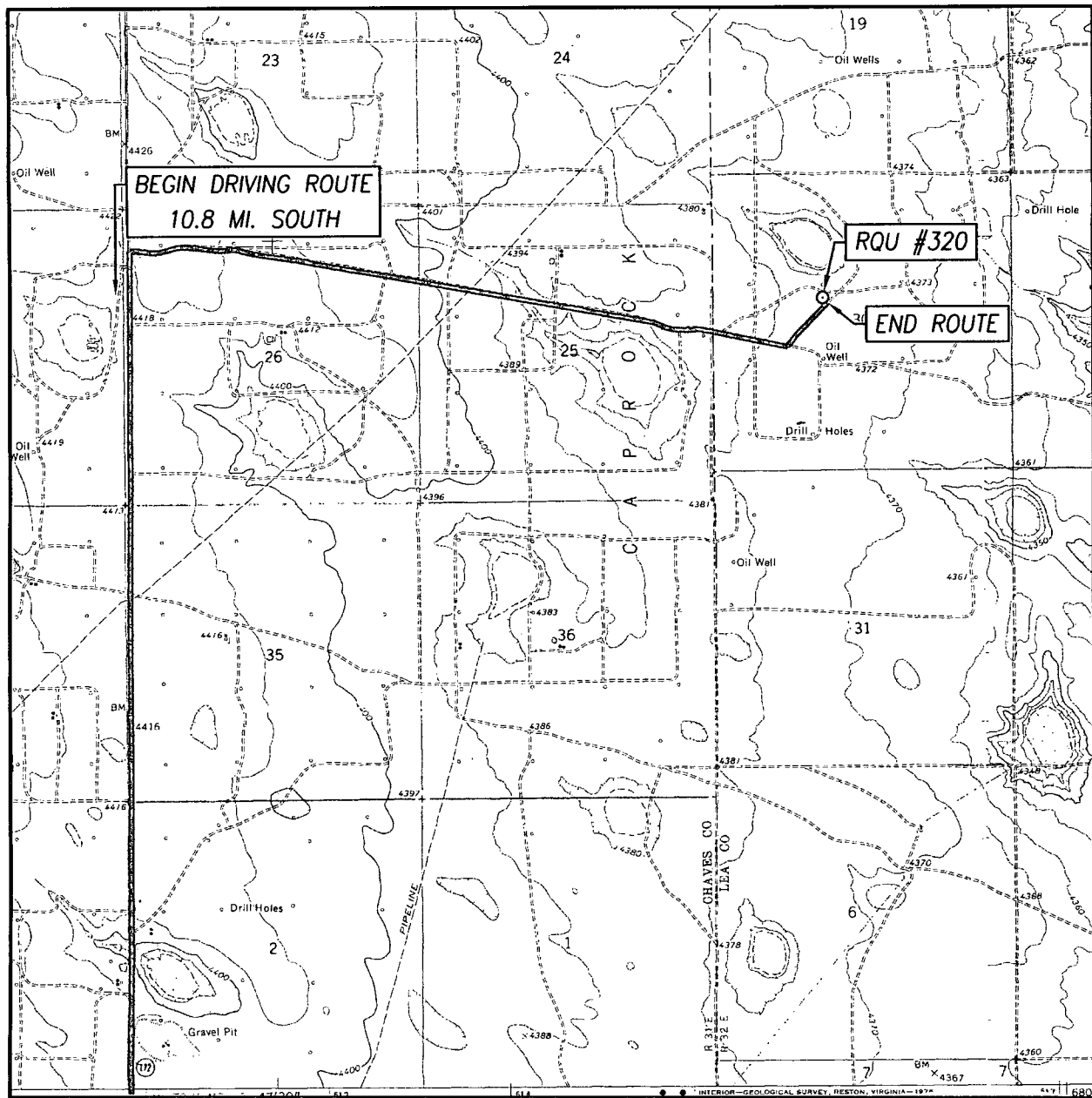


SCALE: 1" = 2 MILES  
DRIVING ROUTE: SEE LOCATION MAP

SEC. 30 TWP. 13-S RGE. 32-E  
SURVEY N.M.P.M.  
COUNTY LEA STATE NEW MEXICO  
DESCRIPTION 2180' FNL & 1980' FWL  
ELEVATION 4376'  
OPERATOR CELERO ENERGY II LP  
LEASE RQU



# LOCATION VERIFICATION MAP



SCALE: 1" = 3000'

CONTOUR INTERVAL:  
CAUDILL RANCH, N.M. - 10'

SEC. 30 TWP. 13-S RGE. 32-E

SURVEY N.M.P.M.

COUNTY LEA STATE NEW MEXICO

DESCRIPTION 2180' FNL & 1980' FWL

ELEVATION 4376'


OPERATOR CELERO ENERGY II LP

LEASE RQU

U.S.G.S. TOPOGRAPHIC MAP  
CAUDILL RANCH, N.M.

## DIRECTIONS TO LOCATION

FROM THE INTERSECTION OF STATE HIGHWAYS 172 AND 249  
(HAGGERMAN CUT-OFF) GO NORTH ON HWY. 172 APPROX. 10.8  
MILES; TURN RIGHT AND GO SOUTHEAST APPROX. 2.3 MILES; TURN  
LEFT AND GO NORTHEAST APPROX. 0.2 MILES; THE LOCATION STAKE  
IS APPROX. 210 FEET TO THE NORTH.



PROVIDING SURVEYING SERVICES  
SINCE 1946  
**JOHN WEST SURVEYING COMPANY**  
412 N. DAL PASO  
HOBBS, N.M. 88240  
(575) 393-3117 [www.jwsc.biz](http://www.jwsc.biz)