

## DISTRICT I

1625 N. French Dr., Hobbs, NM 88240  
Phone (575) 393-6161 Fax: (575) 393-0720

## DISTRICT II

811 S. First St., Artesia, NM 88210  
Phone (575) 748-1283 Fax: (575) 748-9720

## DISTRICT III

1000 Rio Brazos Rd., Aztec, NM 87410  
Phone (505) 334-6178 Fax: (505) 334-6170

## DISTRICT IV

1220 S. St. Francis Dr., Santa Fe, NM 87505  
Phone (505) 476-3460 Fax: (505) 476-3462State of New Mexico  
Energy, Minerals and Natural Resources Department

Form C-102

Revised August 1, 2011

Submit one copy to appropriate  
District Office

## OIL CONSERVATION DIVISION

1220 South St. Francis Dr.  
Santa Fe, New Mexico 87505

## WELL LOCATION AND ACREAGE DEDICATION PLAT

AMENDED REPORT

API Number <b>30-025-40889</b>	Pool Code <b>28434</b>	Pool Name <b>Grama Ridge; Bone Spring North</b>
Property Code <b>39594</b>	Property Name <b>ASADERO STATE COM</b>	Well Number <b>1H</b>
OGRID No. <b>260511</b>	Operator Name <b>GMT EXPLORATION CO., LLC</b>	Elevation <b>3694'</b>

## Surface Location

UL or lot No.	Section	Township	Range	Lot Idn	Feet from the	North/South line	Feet from the	East/West line	County
M	3	21 S	34 E		200	SOUTH	380	WEST	LEA

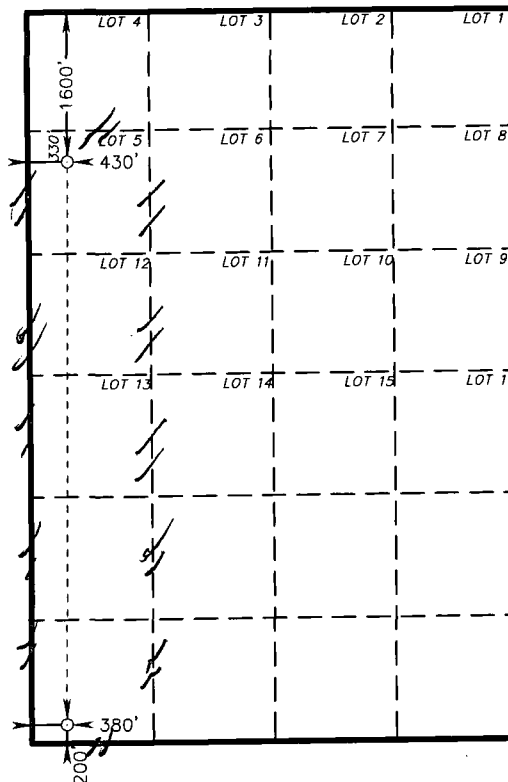
## Bottom Hole Location If Different From Surface

UL or lot No.	Section	Township	Range	Lot Idn	Feet from the	North/South line	Feet from the	East/West line	County
<b>E/ LOT 5</b>	3	21 S	34 E		<b>1558</b> <b>1600</b>	NORTH	<b>430</b> <b>328</b>	WEST	LEA
Dedicated Acres	Joint or Infill	Consolidation Code	Order No.						

NO ALLOWABLE WILL BE ASSIGNED TO THIS COMPLETION UNTIL ALL INTERESTS HAVE BEEN CONSOLIDATED  
OR A NON-STANDARD UNIT HAS BEEN APPROVED BY THE DIVISION

PROPOSED BOTTOM  
HOLE LOCATION

Lat - N 32°31'04.60"  
Long - W 103°27'53.81"  
NMSPCE- N 553249.36  
E 809006.90  
(NAD-83)



## SURFACE LOCATION

Lat - N 32°30'04.50"  
Long - W 103°27'54.37"  
NMSPCE- N 547175.782  
E 809008.434  
(NAD-83)

## OPERATOR CERTIFICATION

I hereby certify that the information contained herein is true and complete to the best of my knowledge and belief, and that this organization either owns a working interest or unleased mineral interest in the land including the proposed bottom hole location or has a right to drill this well at this location pursuant to a contract with an owner of such a mineral or working interest, or to a voluntary pooling agreement or a compulsory pooling order heretofore entered by the division.

Signature: *Keith* Date: *12/11/2013*

Printed Name: *Keith*  
Email Address: *Keith@gmt-exploration.com*

## SURVEYOR CERTIFICATION

I hereby certify that the well location shown on this plat was plotted from field notes of actual surveys made by me or under my supervision and that the same is true and correct to the best of my belief.

NOVEMBER 2012  
Date Surveyed: *NOVEMBER 2012*  
Signature: *GARY L. JONES*  
Professional Surveyor  
Seal of Professional Surveyor  
12/11/2013

Certificate No. Gary L. Jones 7977

BASIN SURVEYS 26835

DEC 17 2013