

30-025-41719

HOBBS OCD

## Surface Use Plan of Operations

MAR 12 2014

ConocoPhillips Company  
Battle Axe 27 1M  
1943 FNL & 2640 FEL (SWNE) of Section 27-26S-32E  
Federal Lease No. LC071985  
Lea County, New Mexico

RECEIVED

1. Access Road - Existing

- A. Travel 6.3 miles on Battle Axe Rd/CR J-2 (as indicated on the plat) for 9.8 miles. Turn north onto proposed access road and travel 234' to location.
- B. Proposed route to location - **See Enclosed County Map & Vicinity Map.**
- C. The existing road will be maintained, including Dust Suppression, in the same or better condition as existed prior to the commencement of operations and said maintenance will continue until final abandonment and reclamation of this drilling location.

2. Planned Access Roads

- A. There will be 234' of new access road with a 30' construction right of way and a minimum travel width of 14'. All is on federal surface.
- B. Maximum grade will not exceed 8 percent.
- C. There will be no County approach; however there could be an apron from the road to the pad corner of about 60' to allow truck turning traffic.
- D. There will be no low water crossing or culverts
- E. There will be no cattle guard installed on the access road.
- F. The proposed access road will be constructed in accordance with roading guidelines established for oil & gas exploration and development activities as referenced in the joint BLM/USFS publication: Surface Operating Standards for Oil and Gas Exploration and Development, Third Edition and/or BLM Manual Section 9113 concerning road construction activities on projects under federal jurisdiction. Prior to moving in any heavy equipment, the access road will be thoroughly compacted. The access road will be surfaced to the required minimum depth (after compaction).

3. Location of Existing Wells within a One-Mile Radius. See Enclosed One-Mile Radius Plat.

- A. There are no water wells within a one-mile radius
- B. There are no dry holes located within a one-mile radius.
- C. There are no plugged and abandoned wells within a one-mile radius.
- D. There are no saltwater disposal wells within a one-mile radius.
- E. There are no proposed drill wells within a one-mile radius.
- F. There are approximately 9 producing within a one-mile radius.
- G. There are no shut-in wells within a one-mile radius.
- H. There are no injection wells within a one-mile radius.
- I. There are no monitoring or observation wells within a one-mile radius.
- J. There is no water source well within a one-mile radius.

MAR 17 2014

4. Location of existing and/or Proposed Facilities

- A. On Well Pad: There are no anticipated surface facilities on this pad. The well is planned as a monitor/source well only.

5. Location and Type of Water Supply

- A. Fresh water will be obtained from an approved source.  
B. No water well will be drilled on this location.

6. Source of Construction Materials

- A. Any materials needed in addition to what can be used from location and access road will be hauled in from a supplier having a permitted source of materials.  
B. If production is established, any additional construction materials required for the surfacing of the access road and for installation of the production facilities will be purchased from a supplier having a permitted source of materials.  
C. No construction materials will be taken from Federal lands without a prior approval from the appropriate Surface Management Agency.

7. Methods for Handling Waste Disposal

- A. Hazardous substances as listed as hazardous under the Comprehensive Environmental Response Compensation and Liability Act (CERCLA) of 1980, as amended, 42 U.S.C. 9601 et seq. and the regulations issued under CERCLA, will be disposed of in the appropriate pit.  
B. Any spills of oil or any other potentially hazardous material will be cleaned up and immediately removed to an approved disposal site.  
C. Sewage will be disposed of according to county and state requirements in a portable chemical toilet(s) or in a hole at least 20 feet deep excavated in the cut portion of the well pad. Other waste and chemicals may not be disposed of on location. Waste will not be burned on location.  
D. Garbage and trash will be contained in portable trash cages. The contents of the trash cages will be disposed of according to county and state regulations at an approved facility. Disposal of it or burning it will not be allowed on the well location.  
F. After drilling rig has moved out of area, any scattered trash and litter will be removed from site.  
G. All potentially hazardous areas will be fenced, and will remain in this condition until entire area can be rehabilitated.

8. Ancillary Facilities

The production facilities are discussed under Item 4.

9. Well Site Layout

- A. **See Enclosed Well Location Plat**  
B. Well Site Layout – **See Enclosed Drilling Rig Layout Plat**  
C. Topsoil will be stripped from the locations and access roads and be stockpiled and be deposited apart from other excavated material.  
D. There will be a no reserve pit on location. The well will be drilled via a closed loop system and the contents will be taken to an approved disposal site.

10. Plans for Reclamation of the Surface

- A. If this well is a producer, all site rehabilitation shall be completed within six months. Under normal weather conditions, the timetable for rehab will allow two months for backfill settling and two months to complete final re-contouring, and top-soiling. In the event of winter freeze-up, reclamation will be put on hold as determined by the BLM.
- B. At such time as the well is abandoned, ConocoPhillips Company will contact the BLM for development of the final rehabilitation plan. Upon abandonment, a dry hole marker welded to surface casing four feet below ground level will be installed. It will contain the same information as the well sign as directed by 43 CFR 3162.6 (30 CFR 221.22). The dry hole marker sealing the casing will have an 1/8" to 1/4" weep hole which will allow pressure to dissipate and make detection of any fluid seepage easier.
- C. If this well site is constructed and not drilled, the site and access road will be reclaimed or BLM approved special erosion control measures implemented within 90 days of site construction unless otherwise approved in writing by sundry notice.
- D. The unused portion of the site will be ripped prior to replacing the topsoil. The soil-banked material will be spread over the area. Reseeding will be an approved mixture by the BLM. If the broadcast method is utilized, the seed mixture shall be doubled.  
There shall be no primary or secondary noxious weed seed in the native seed mixture
- E. The entire disturbed location may be fenced after seeding. When the location has been rehabilitated and vegetation re-established, the fence shall be removed or the fenced area reduced as required by the landowner or BLM.
- F. Weeds will be controlled on disturbed areas within the exterior limits of the well pad. The control methods will be in accordance with guidelines established by EPA, BLM, state, and local authorities.
- G. A pre-work onsite with the BLM and ConocoPhillips Company may be held for all phases of reclamation
- H. ConocoPhillips Company will utilize many best management practices. The first is location selection itself and adjusting the project area to accommodate the terrain to minimize the initial disturbance and erosion concerns. The project area will have the required interim reclamation and reseeding for the unused portion of the well site not needed for production operations. The interim reclamation will occur shortly after completion operation and facility installation has happened.

11. Surface Ownership  
Bureau of Land Management  
620 E. Greene Street  
Carlsbad, NM 88220

12. Other Information

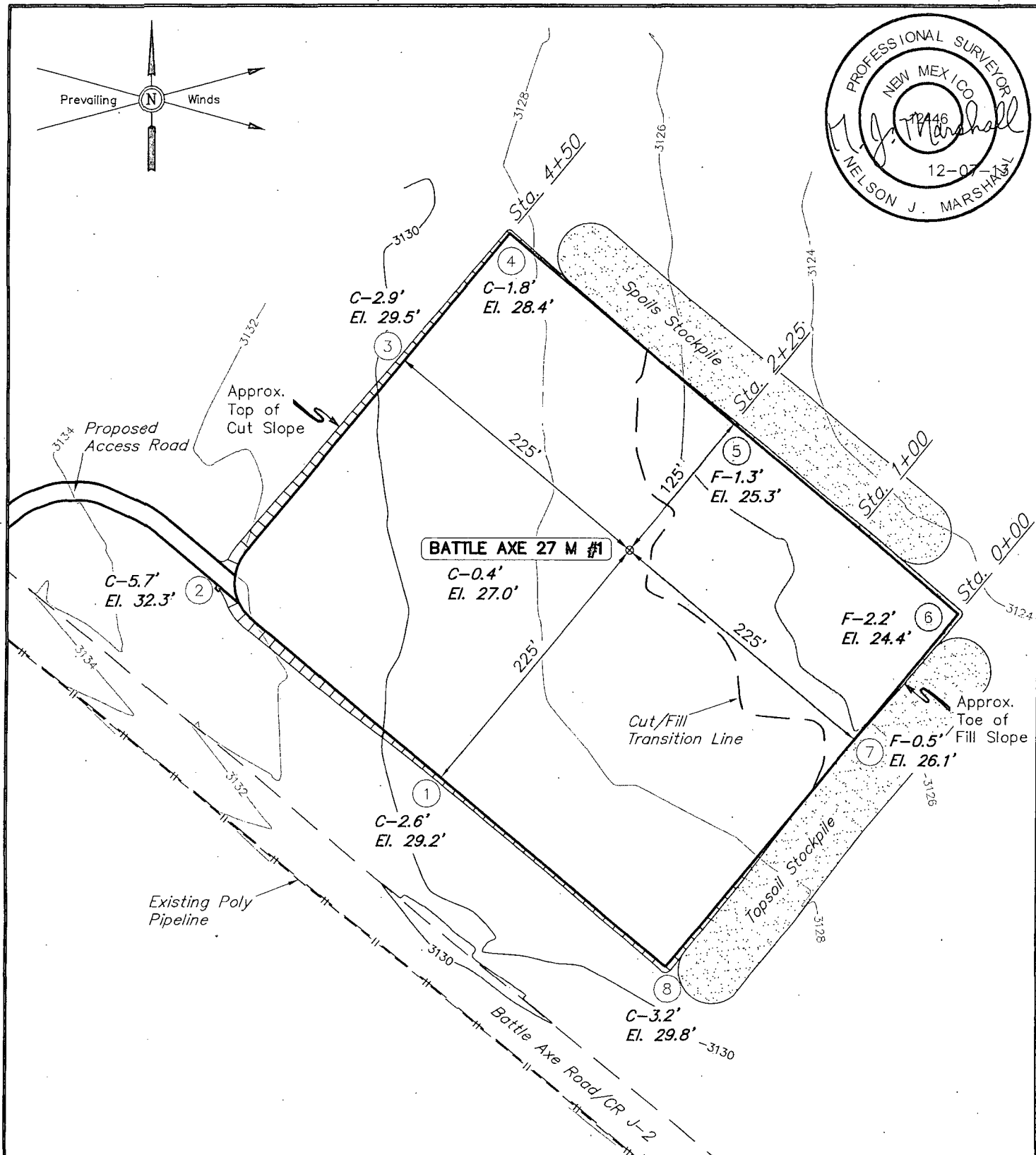
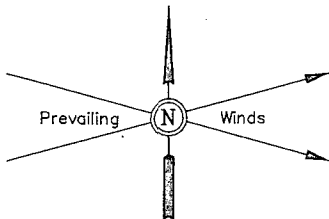
- A. The area that would be impacted by the well site and access road has been surveyed for cultural resources and/or the acreage has been covered under contribution to the MOA.
- B. ConocoPhillips Company will be responsible for informing all persons in the area who are associated with this project that they will be subject to prosecution for knowingly disturbing historic or archaeological sites or for collecting artifacts.

If historic or archaeological materials are uncovered, ConocoPhillips Company will suspend all operations that might further disturb such materials and immediately contact the Authorized Officer, Bureau of Land Management.

Within five (5) working days the Authorized Officer will inform ConocoPhillips Company as to whether the materials appear eligible for the National Register of Historic Places; the mitigation measures the operator will likely have to undertake before the site can be used

(assuming in site preservation is not necessary); and a time frame for the Authorized officer to complete an expedited review under 36 CFR 800.11 to confirm, through the State Historic Preservation Officer, that the findings of the Authorized Officer are correct and that mitigation is appropriate.

- C. ConocoPhillips Company will protect, in place, all public land survey monuments, private property corner, and Forest service boundary markers. In the event that any such land markers or monuments are destroyed in the exercise of their rights, depending on the type of monument destroyed, the operator shall see that they are reestablished or referenced in accordance with (1) the procedures outlined in the "Manual of Instructions for the Survey of the Public Land of the United States", (2) the specifications of the county surveyor, or (3) the specification of the BLM.
- D. ConocoPhillips Company will comply with the additional Conditions of Approval provided by the BLM.



ELEV. UNGRADED GROUND AT LOC. STAKE = 3127.0' FINISHED GRADE ELEV. AT LOC. STAKE = 3126.6'

**NOTES:**

- Round corners at 35' radius or as needed.
- Construct diversion ditches as needed.

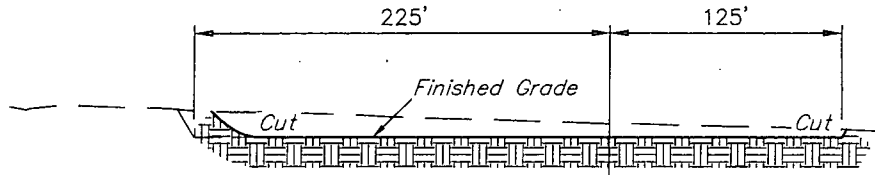
ConocoPhillips	<b>ConocoPhillips Company</b>	
<b>BATTLE AXE 27 M #1</b> <b>SECTION 27, T26S, R32E, N.M.P.M.</b> <b>1943' FNL 2640' FEL</b>		
DRAWN BY: H.K.W.	SCALE: 1" = 100'	REVISED: 12-06-13 S.S.
DATE: 07-16-13	REVISED: 07-27-13 A.D.	



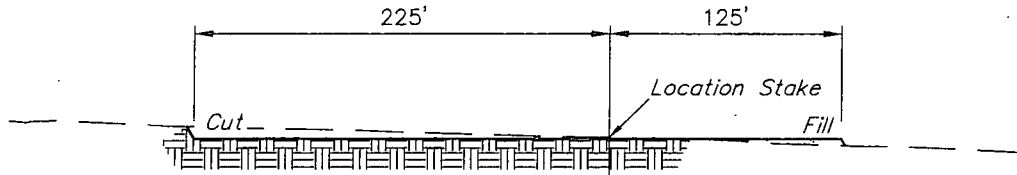
Corporate Office \* 85 South 200 East  
Vernal, UT 84078 \* (435) 789-1017

<b>LOCATION LAYOUT</b>		<b>FIGURE #1</b>
------------------------	--	------------------

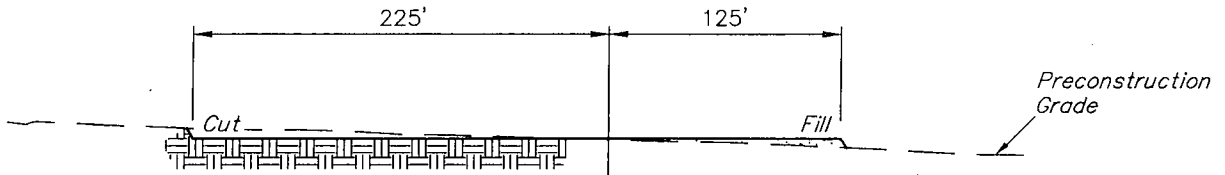
1" = 40'  
X-Section  
Scale  
1" = 100'



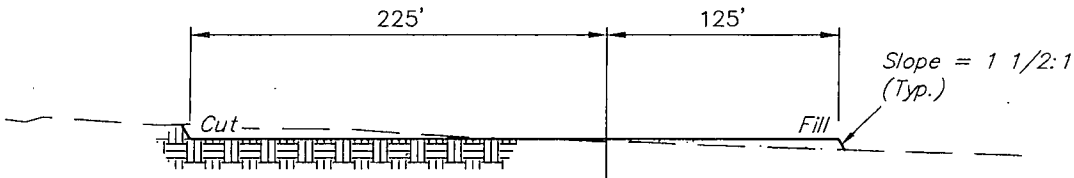
STA. 4+50



STA. 2+25



STA. 1+00



STA. 0+00

APPROXIMATE EARTHWORK QUANTITIES		APPROXIMATE SURFACE DISTURBANCE AREAS		
(6") TOPSOIL STRIPPING	3,020 Cu. Yds.		DISTANCE	ACRES
REMAINING LOCATION	6,760 Cu. Yds.	WELL SITE DISTURBANCE	N/A	±4.554
<b>TOTAL CUT</b>	<b>9,780 Cu. Yds.</b>	25' WIDE ACCESS ROAD R-O-W DISTURBANCE	±234'	±0.134
<b>FILL</b>	<b>2,050 Cu. Yds.</b>	<b>TOTAL SURFACE USE AREA</b>	±234'	±4.688
EXCESS MATERIAL	7,730 Cu. Yds.			
TOPSOIL	3,020 Cu. Yds.			
<b>EXCESS UNBALANCE</b> (After Interim Rehabilitation)	<b>4,710 Cu. Yds.</b>			

**NOTES:**

- Fill quantity includes 5% for compaction.
- Topsoil should not be stripped below finished grade on substructure area.

ConocoPhillips

**ConocoPhillips Company**

BATTLE AXE 27 M #1  
SECTION 27, T26S, R32E, N.M.P.M.  
1943' FNL 2640' FEL

DRAWN BY: A.D.

SCALE: 1" = 100'

DATE: 07-27-13

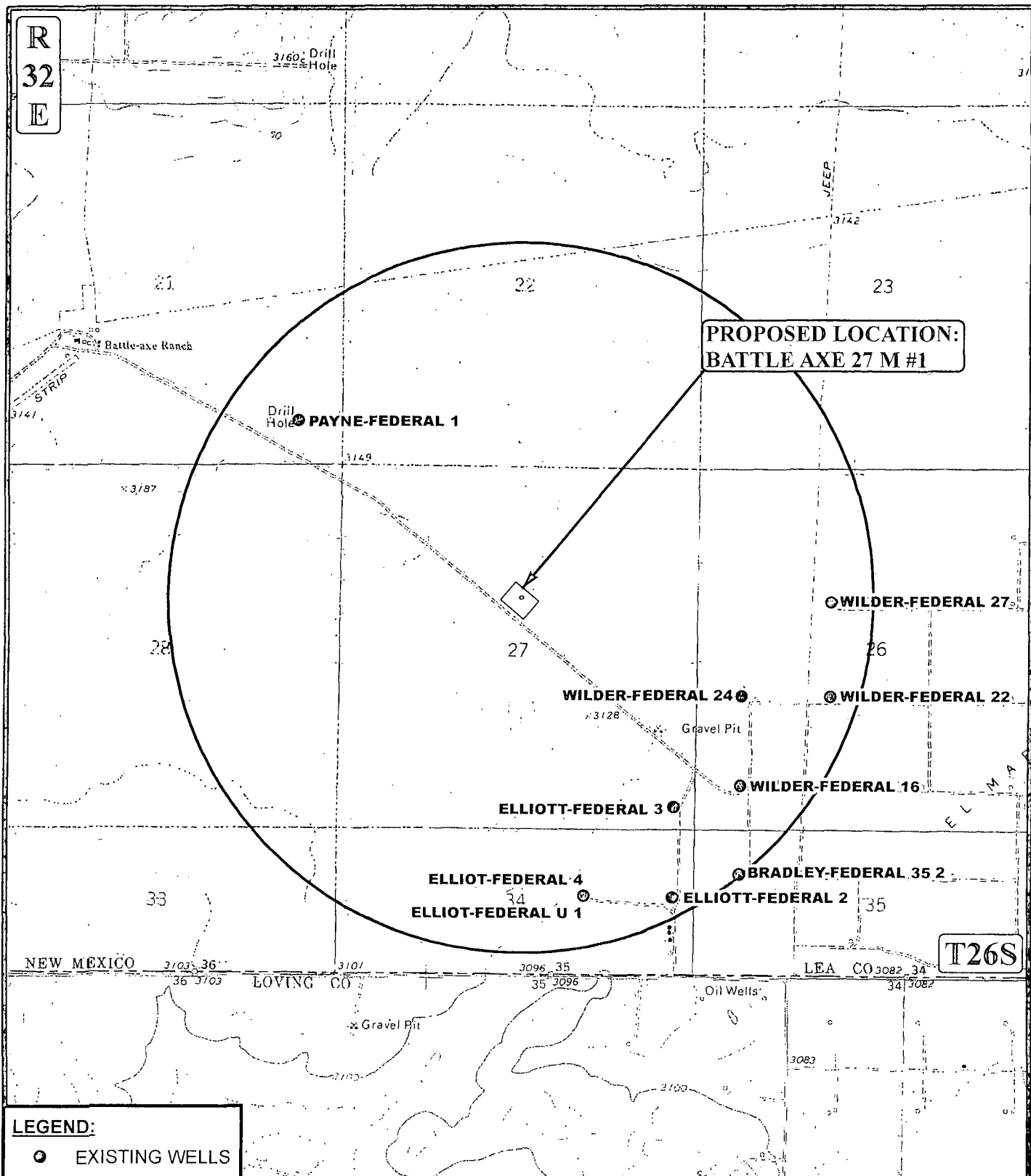
REVISED: 12-06-13 S.S.



Corporate Office \* 85 South 200 East  
Vernal, UT 84078 \* (435) 789-1017

**TYPICAL CROSS SECTIONS** **FIGURE #2**

R  
32  
E



**LEGEND:**

● EXISTING WELLS

SCALE: 1" = 2000'

REV: 12-06-13 L.S.

DRAWN BY: J.L.H.

DATE DRAWN: 07-30-13



Corporate Office \* 85 South 200 East  
Vernal, UT 84078 \* (435) 789-1017



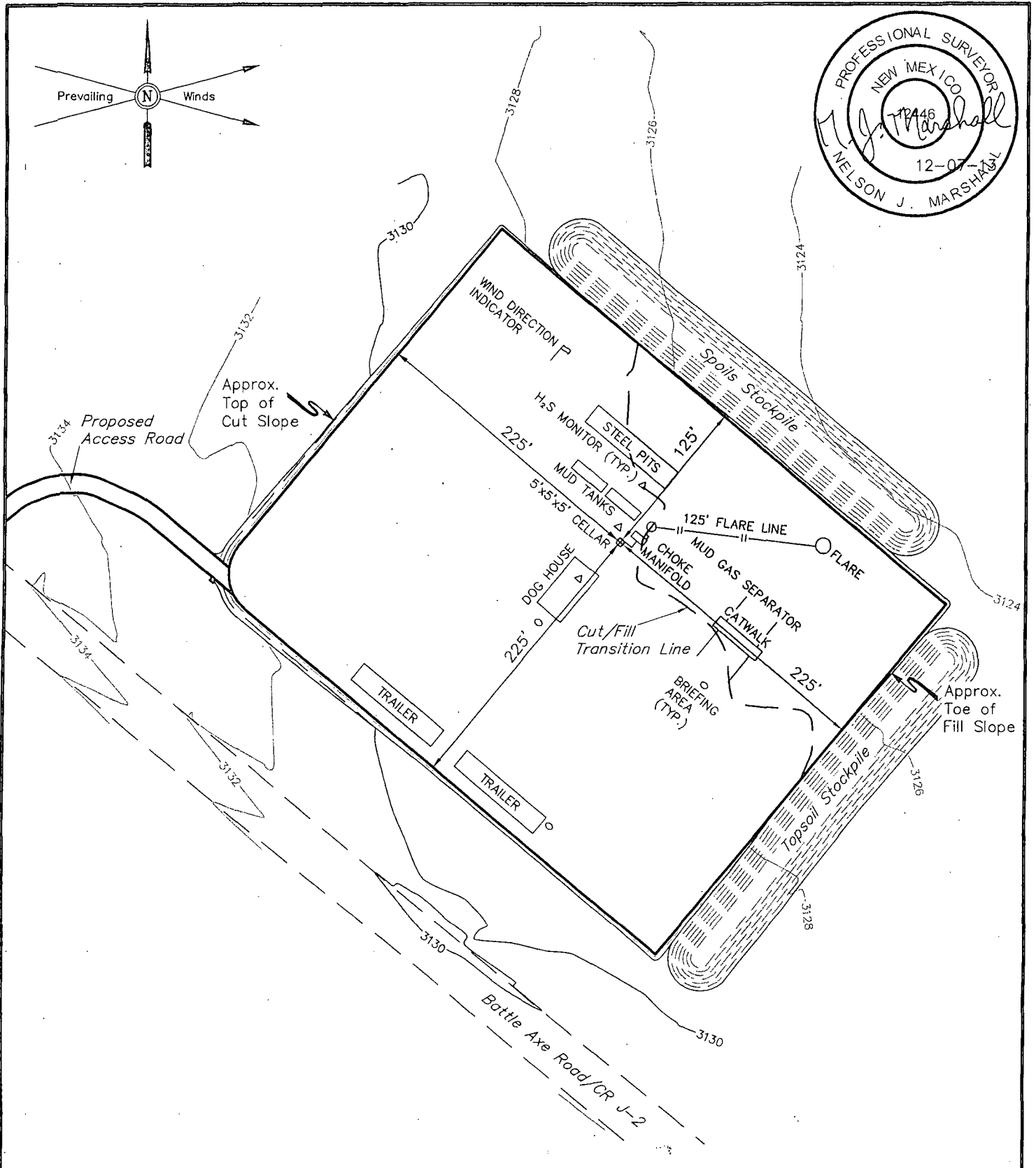
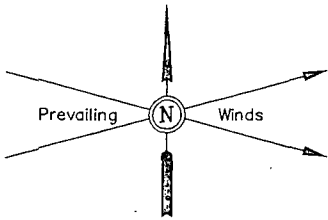
ConocoPhillips

ConocoPhillips Company

BATTLE AXE 27 M #1  
SECTION 27, T26S, R32E, N.M.P.M.  
1943' FNL 2640' FEL

TOPOGRAPHIC MAP

TOPOC



**NOTES:**

- Flare pit is to be located a min. of 125' from the well head.

ConocoPhillips

**ConocoPhillips Company**

**BATTLE AXE 27 M #1**  
**SECTION 27, T26S, R32E, N.M.P.M.**  
**1943' FNL 2640' FEL**

DRAWN BY: A.D.

SCALE: 1" = 100'

DATE: 07-27-13

REVISED: 12-06-13 S.S.

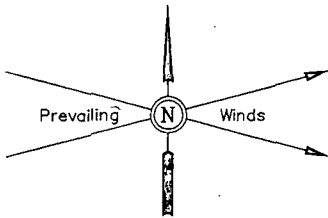


Corporate Office \* 85 South 200 East  
 Vernal, UT 84078 \* (435) 789-1017

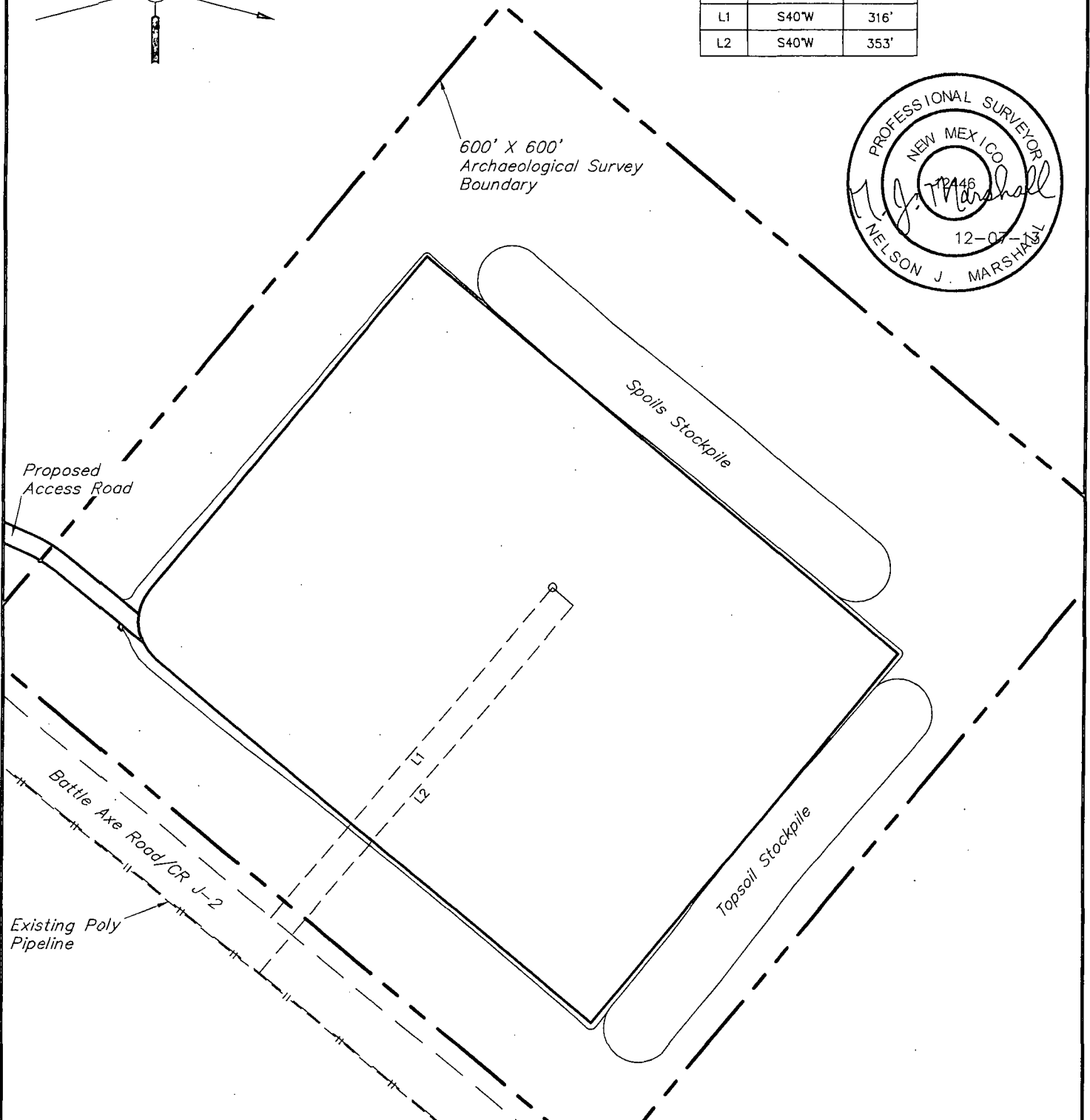
**TYPICAL RIG LAYOUT**

**FIGURE #3**





LINE TABLE		
LINE	DIRECTION	LENGTH
L1	S40°W	316'
L2	S40°W	353'



NOTES:

ConocoPhillips

ConocoPhillips Company

BATTLE AXE 27 M #1  
SECTION 27, T26S, R32E, N.M.P.M.  
1943' FNL 2640' FEL

DRAWN BY: A.D.

SCALE: 1" = 100'

DATE: 07-27-13

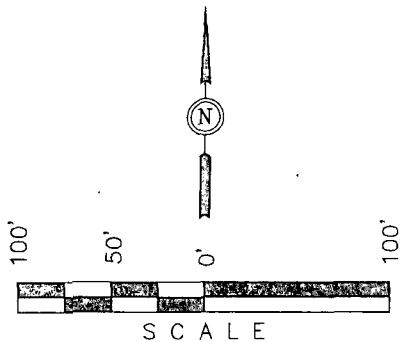
REVISED: 12-06-13 S.S.



Corporate Office \* 85 South 200 East  
Vernal, UT 84078 \* (435) 789-1017

ARCHAEOLOGICAL SURVEY  
BOUNDARY

FIGURE #5



LINE TABLE	
LINE	LENGTH
L1	16'
L2	32'
L3	25'
L4	28'
L5	47'
L6	86'



Total Proposed  
Access Road  
Centerline = 234'

Proposed  
Well Head

Battle Axe Road/CR J-2

Proposed  
BATTLE AXE 27 M #1  
Well Pad

**NOTES:**

- The maximum grade of the proposed access road is 6%

ConocoPhillips

**ConocoPhillips Company**

BATTLE AXE 27 M #1  
SECTION 27, T26S, R32E, N.M.P.M.  
1943' FNL 2640' FEL

DRAWN BY: A.D.

SCALE: 1" = 100'

DATE: 07-27-13

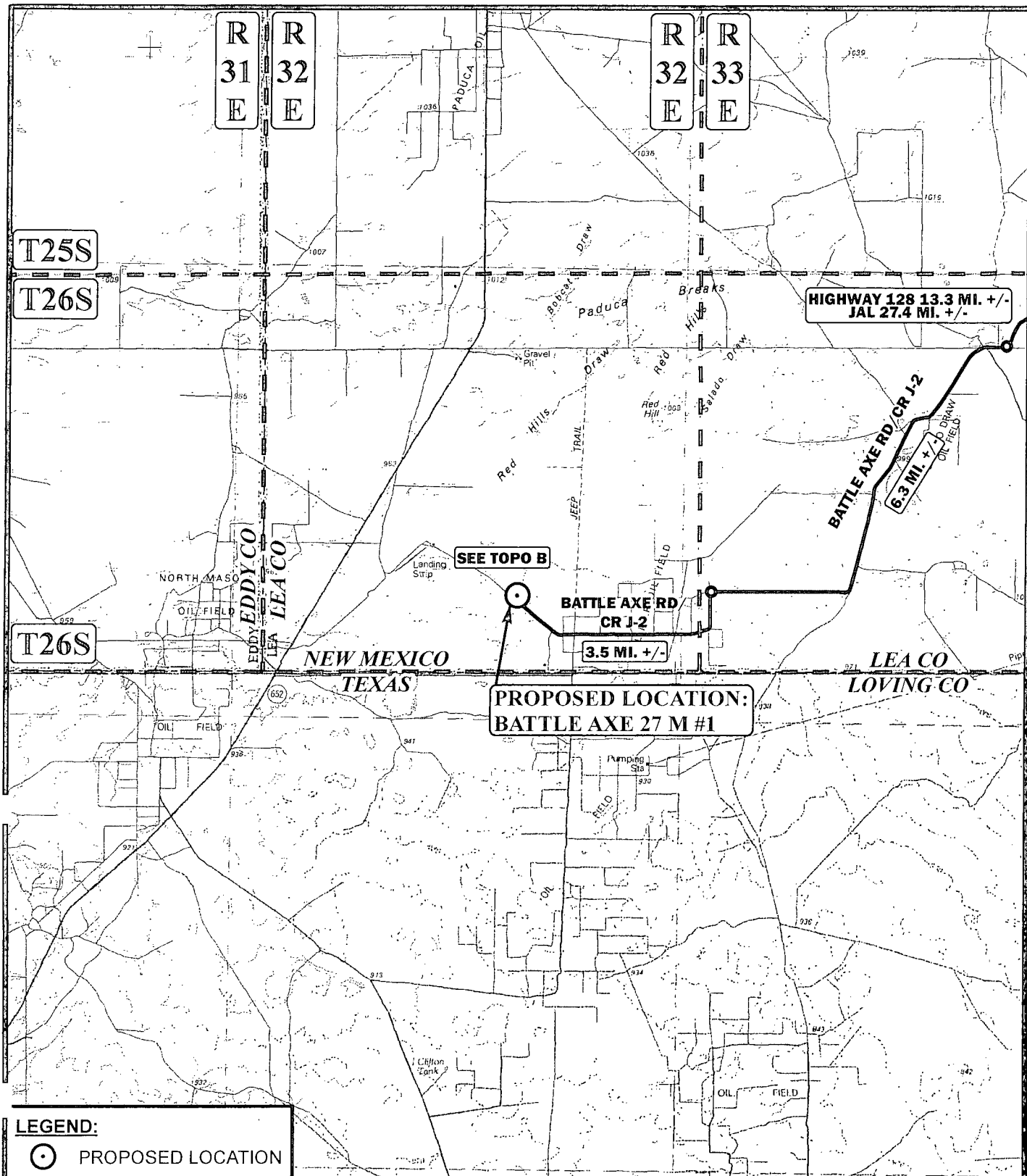
REVISED: 12-06-13 S.S.



Corporate Office \* 85 South 200 East  
Vernal, UT 84078 \* (435) 789-1017

**ACCESS ROAD LAYOUT**

**FIGURE #6**



**LEGEND:**

○ PROPOSED LOCATION

SCALE: 1:100,000

REV: 12-06-13 L.S.

DRAWN BY: J.L.H.

DATE DRAWN: 07-30-13

N



ConocoPhillips

ConocoPhillips Company

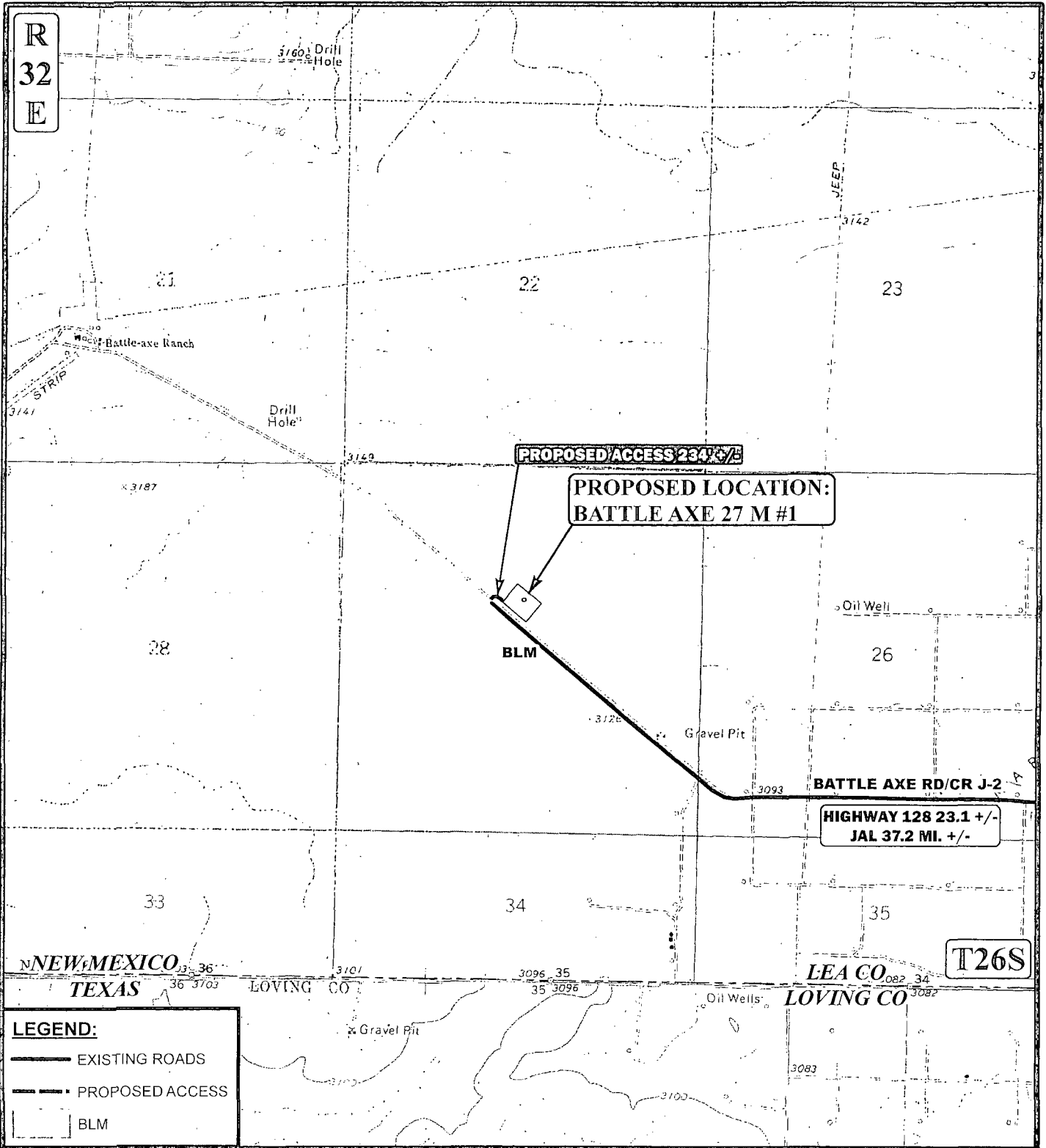
BATTLE AXE 27 M #1  
SECTION 27, T26S, R32E, N.M.P.M.  
1943' FNL 2640' FEL

ACCESS ROAD MAP

TOPO A



Corporate Office \* 85 South 200 East  
Vernal, UT 84078 \* (435) 789-1017



**LEGEND:**

- EXISTING ROADS
- - - PROPOSED ACCESS
- BLM

\*PARCEL DATA SHOWN HAS BEEN OBTAINED FROM VARIOUS SOURCES AND SHOULD BE USED FOR MAPPING, GRAPHIC AND PLANNING PURPOSES ONLY. NO WARRANTY IS MADE BY UINTAH ENGINEERING & LAND SURVEYING (UELS) FOR ACCURACY OF THE PARCEL DATA.

SCALE: 1" = 2000'	REVISED: 07-30-13
DRAWN BY: J.L.H.	REV: 12-06-13 L.S.
DATE DRAWN: 07-16-13	



Corporate Office \* 85 South 200 East  
Vernal, UT 84078 \* (435) 789-1017



ConocoPhillips	<b>ConocoPhillips Company</b>
BATTLE AXE 27 M #1 SECTION 27, T26S, R32E, N.M.P.M. 1943' FNL 2640' FEL	
<b>ACCESS ROAD MAP</b>	<b>TOPO B</b>

ConocoPhillips Company  
BATTLE AXE 27 M #1  
SECTION 27, T26S, R32E, N.M.P.M.

BEGINNING AT THE INTERSECTION OF HIGHWAY 18 AND HIGHWAY 128 PROCEED IN A WESTERLY, THEN NORTHWESTERLY DIRECTION FROM JAL, NEW MEXICO ALONG HIGHWAY 128 APPROXIMATELY 14.1 MILES TO THE JUNCTION OF THIS ROAD BATTLE AXE ROAD TO THE SOUTHWEST; TURN LEFT AND PROCEED IN A SOUTHWESTERLY, THEN WESTERLY, THEN SOUTHERLY, THEN SOUTHWESTERLY DIRECTION APPROXIMATELY 13.3 MILES TO THE JUNCTION OF THIS ROAD AND BATTLE AXE ROAD/CR J-2 TO THE WEST; TURN RIGHT AND PROCEED IN A WESTERLY, THEN SOUTHWESTERLY DIRECTION APPROXIMATELY 6.3 MILES TO THE JUNCTION OF THIS ROAD AND BATTLE AXE ROAD/CR J-2 TO THE SOUTH; TURN LEFT AND PROCEED IN A SOUTHERLY, THEN SOUTHWESTERLY, THEN WESTERLY, THEN NORTHWESTERLY DIRECTION APPROXIMATELY 3.5 MILES TO THE BEGINNING OF THE PROPOSED ACCESS TO THE NORTHEAST; FOLLOW ROAD FLAGS IN A NORTHEASTERLY, THEN SOUTHEASTERLY DIRECTION APPROXIMATELY 234' TO THE PROPOSED LOCATION.

TOTAL DISTANCE FROM JAL, NEW MEXICO TO THE PROPOSED LOCATION IS APPROXIMATELY 37.2 MILES.