

DISTRICT I  
1625 N. French Dr., Hobbs, NM 88240  
Phone (575) 393-6161 Fax: (575) 393-0720

DISTRICT II  
1301 W. Grand Avenue, Artesia, NM 88210  
Phone (575) 748-1283 Fax: (575) 748-8720

DISTRICT III  
1000 Rio Brazos Rd., Aztec, NM 87410  
Phone (505) 334-8178 Fax: (505) 334-8170

DISTRICT IV  
1220 S. St. Francis Dr., Santa Fe, NM 87505  
Phone (505) 475-3460 Fax: (505) 475-3462

HOBBS OGD

JAN 24 2014

State of New Mexico  
Energy, Minerals and Natural Resources Department

Form C-102  
Revised August 1, 2011

Submit one copy to appropriate  
District Office

OIL CONSERVATION DIVISION

1220 South St. Francis Dr.  
RECEIVED Santa Fe, New Mexico 87505

WELL LOCATION AND ACREAGE DEDICATION PLAT

☐ AMENDED REPORT

API Number 30-025-40630	Pool Code 5535	Popl Name Berry; Bone Spring, North
Property Code 17549	Property Name BERRY APN STATE	Well Number 3H
OGRID No. 025575	Operator Name YATES PETROLEUM CORP.	Elevation 3,738' GR

Surface Location

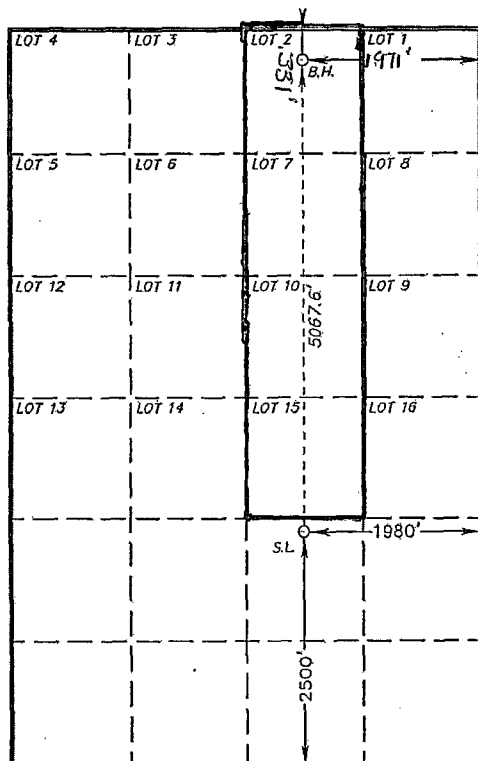
UL or lot No.	Section	Township	Range	Lot Idn	Feet from the	North/South line	Feet from the	East/West line	County
LOT 15	5	21 S	34 E		2500	SOUTH	1980	EAST	LEA

Bottom Hole Location If Different From Surface

UL or lot No.	Section	Township	Range	Lot Idn	Feet from the	North/South line	Feet from the	East/West line	County
LOT 2	5	21 S	34 E		331' 566'	NORTH S	1971' 2014	EAST	LEA

Dedicated Acres 160	Joint or Infill	Consolidation Code	Order No.
------------------------	-----------------	--------------------	-----------

NO ALLOWABLE WILL BE ASSIGNED TO THIS COMPLETION UNTIL ALL INTERESTS HAVE BEEN CONSOLIDATED  
OR A NON-STANDARD UNIT HAS BEEN APPROVED BY THE DIVISION



PROPOSED BOTTOM  
HOLE LOCATION

Lot - N 32°31'17.17"  
Long - W 103°29'23.72"  
NMSPCE- N 554458.342  
E 801298.343  
(NAD-83)

SURFACE LOCATION

Lot - N 32°30'27.04"  
Long - W 103°29'23.68"  
NMSPCE- N 549391.857  
E 801342.026  
(NAD-83)

OPERATOR CERTIFICATION

I hereby certify that the information contained herein is true and complete to the best of my knowledge and belief, and that this organization either owns a working interest or unleased mineral interest in the land including the proposed bottom hole location or has a right to drill this well at this location pursuant to a contract with an owner of such a mineral or working interest, or to a voluntary pooling agreement or a compulsory pooling order heretofore entered by the division.

*Laura Watts* 1/23/14  
Signature Date

Laura Watts  
Printed Name  
laura@yatespetroleum.com  
Email Address

SURVEYOR CERTIFICATION

I hereby certify that the well location shown on this plat was plotted from field notes of actual surveys made by me or under my supervision, and that the same is true and correct to the best of my belief.

Date Surveyed  
Signature & Seal of  
Professional Surveyor

Certificate No. Gary L. Jones 7977

BASIN SURVEYS 26616

MAR 25 2014