

District I  
1625 N. French Dr., Hobbs, NM 88240  
Phone: (575) 393-6161 Fax: (575) 393-0720  
District II  
811 S. First St., Artesia, NM 88210  
Phone: (575) 748-1283 Fax: (575) 748-9720  
District III  
1000 Rio Brazos Road, Aztec, NM 87410  
Phone: (505) 334-6178 Fax: (505) 334-6170  
District IV  
1220 S. St. Francis Dr., Santa Fe, NM 87505  
Phone: (505) 476-3460 Fax: (505) 476-3462

State of New Mexico  
Energy, Minerals & Natural Resources Department  
OIL CONSERVATION DIVISION  
1220 South St. Francis Dr.  
Santa Fe, NM 87505

Form C-102  
Revised August 1, 2011  
Submit one copy to appropriate  
District Office

☐ AMENDED REPORT

WELL LOCATION AND ACREAGE DEDICATION PLAT

<sup>1</sup> API Number 30025- <b>41948</b>	<sup>2</sup> Pool Code <b>17644</b>	<sup>3</sup> Pool Name <b>DIAMONDTAK; Bone Spring/Wildcat</b>
<sup>4</sup> Property Code <b>313460</b>	<sup>5</sup> Property Name URRACA FEDEAL COM	<sup>6</sup> Well Number #22H
<sup>7</sup> OGRID No. 215099	<sup>8</sup> Operator Name CIMAREX ENERGY CO.	<sup>9</sup> Elevation 3716'

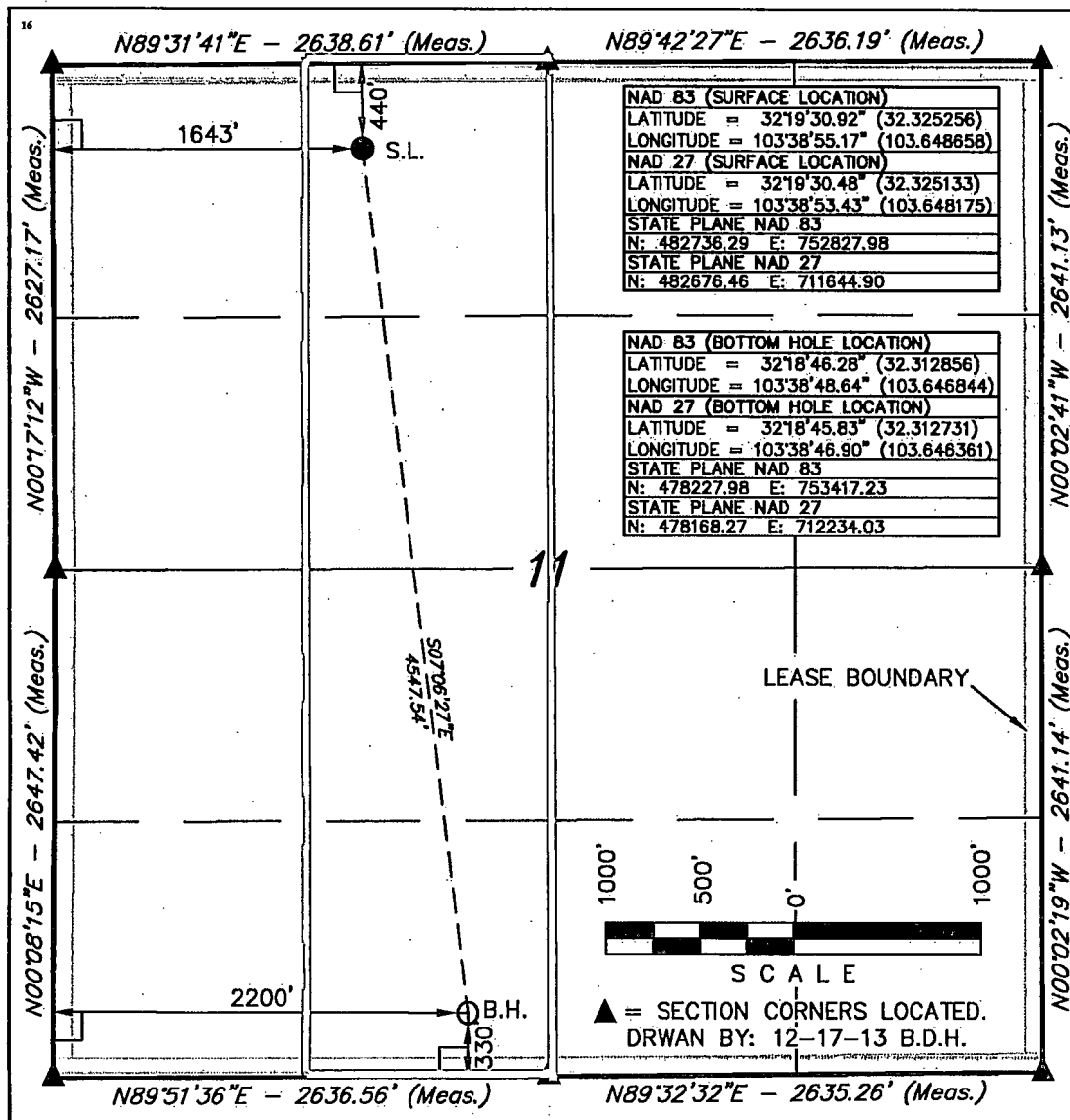
<sup>10</sup> Surface Location

UL or lot no.	Section	Township	Range	Lot Idn	Feet from the	North/South line	Feet from the	East/West line	County
C	11	23 S	32 E		440	NORTH	1643	WEST	LEA

<sup>11</sup> Bottom Hole Location If Different From Surface

UL or lot no.	Section	Township	Range	Lot Idn	Feet from the	North/South line	Feet from the	East/West line	County
N	11	23 S	32 E		330	SOUTH	2200	WEST	LEA
<sup>12</sup> Dedicated Acres 160	<sup>13</sup> Joint or Infill	<sup>14</sup> Consolidation Code	<sup>15</sup> Order No. NSL Pending						

No allowable will be assigned to this completion until all interests have been consolidated or a non-standard unit has been approved by the division.



<sup>17</sup> OPERATOR  
CERTIFICATION

I hereby certify that the information contained herein is true and complete to the best of my knowledge and belief, and that this organization either owns a working interest or unleased mineral interest in the land including the proposed bottom hole location or has a right to drill this well at this location pursuant to a contract with an owner of such a mineral or working interest, or to a voluntary pooling agreement or a compulsory pooling order heretofore entered by the division.

*Aricka Easterling*  
Signature Date 12-17-14

Aricka Easterling

Printed Name

aeasterling@cimarex.com

E-mail Address

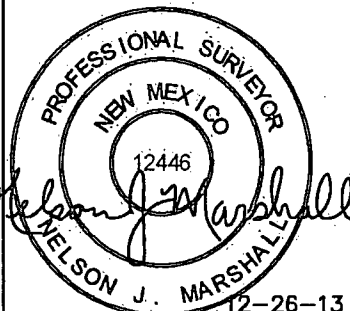
<sup>18</sup> SURVEYOR  
CERTIFICATION

I hereby certify that the well location shown on this plat was plotted from field notes of actual surveys made by me or under my supervision, and that the same is true and correct to the best of my belief.

November 15, 2013

Date of Survey

Signature and Seal of Professional Surveyor:



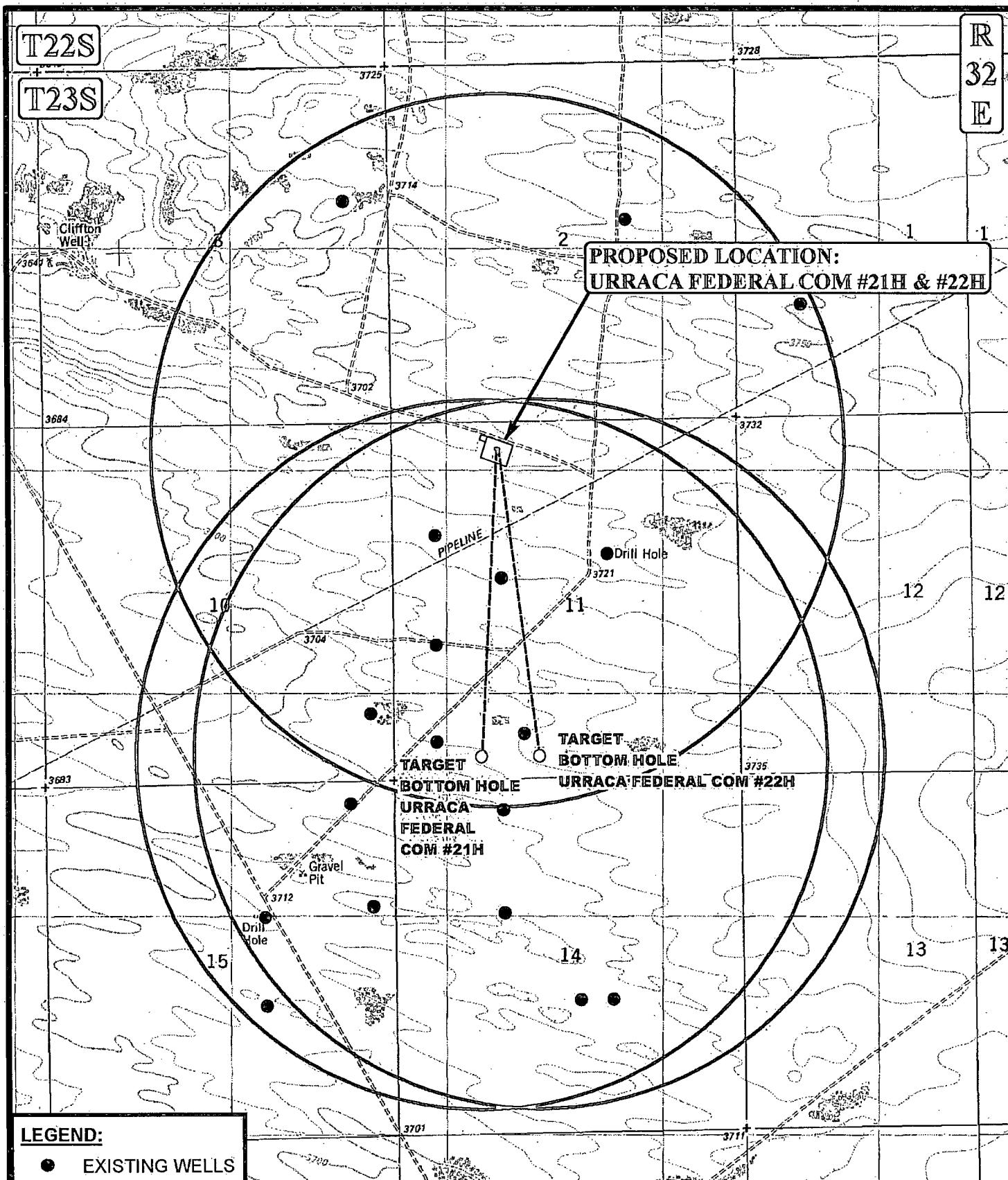
Certificate Number:

JUL 09 2014

Am

T22S

T23S

R  
32  
E**LEGEND:**

● EXISTING WELLS

SCALE: 1" = 2000'

REVISED: 00-00-00

DRAWN BY: L.S.

DATE DRAWN: 12-09-13

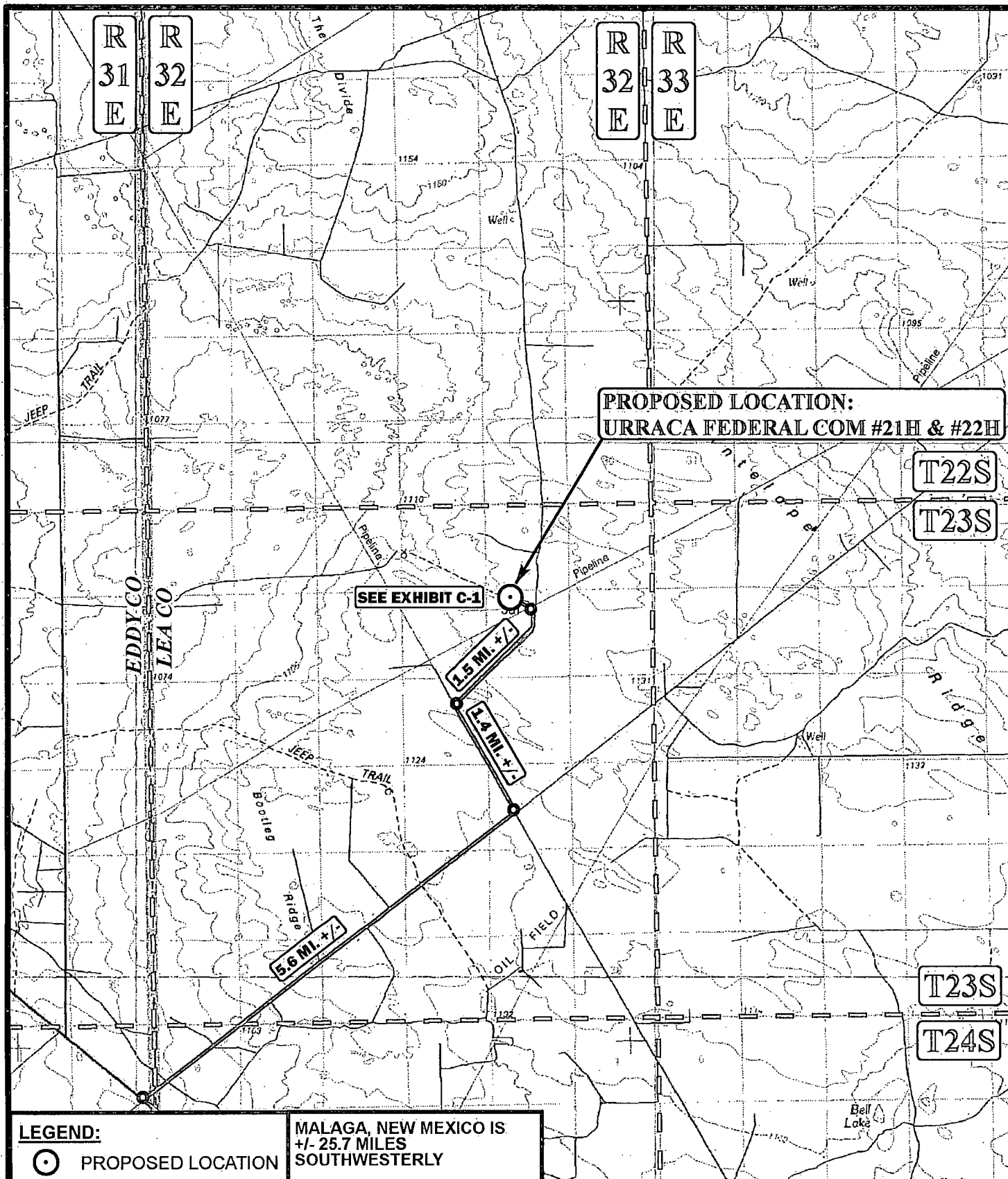
**CIMAREX****CIMAREX ENERGY CO.**

URRACA FEDERAL COM #21H & #22H  
SECTION 11, T23S, R32E, N.M.P.M.  
NE 1/4 NW 1/4

**ONE MILE RADIUS PLAT****EXHIBIT A**

**UINTAH**  
ENGINEERING & LAND SURVEYING

Corporate Office \* 85 South 200 East  
Vernal, UT 84078 \* (435) 789-1017



SCALE: 1:100,000

REVISED: 00-00-00

DRAWN BY: L.S.

DATE DRAWN: 12-09-13



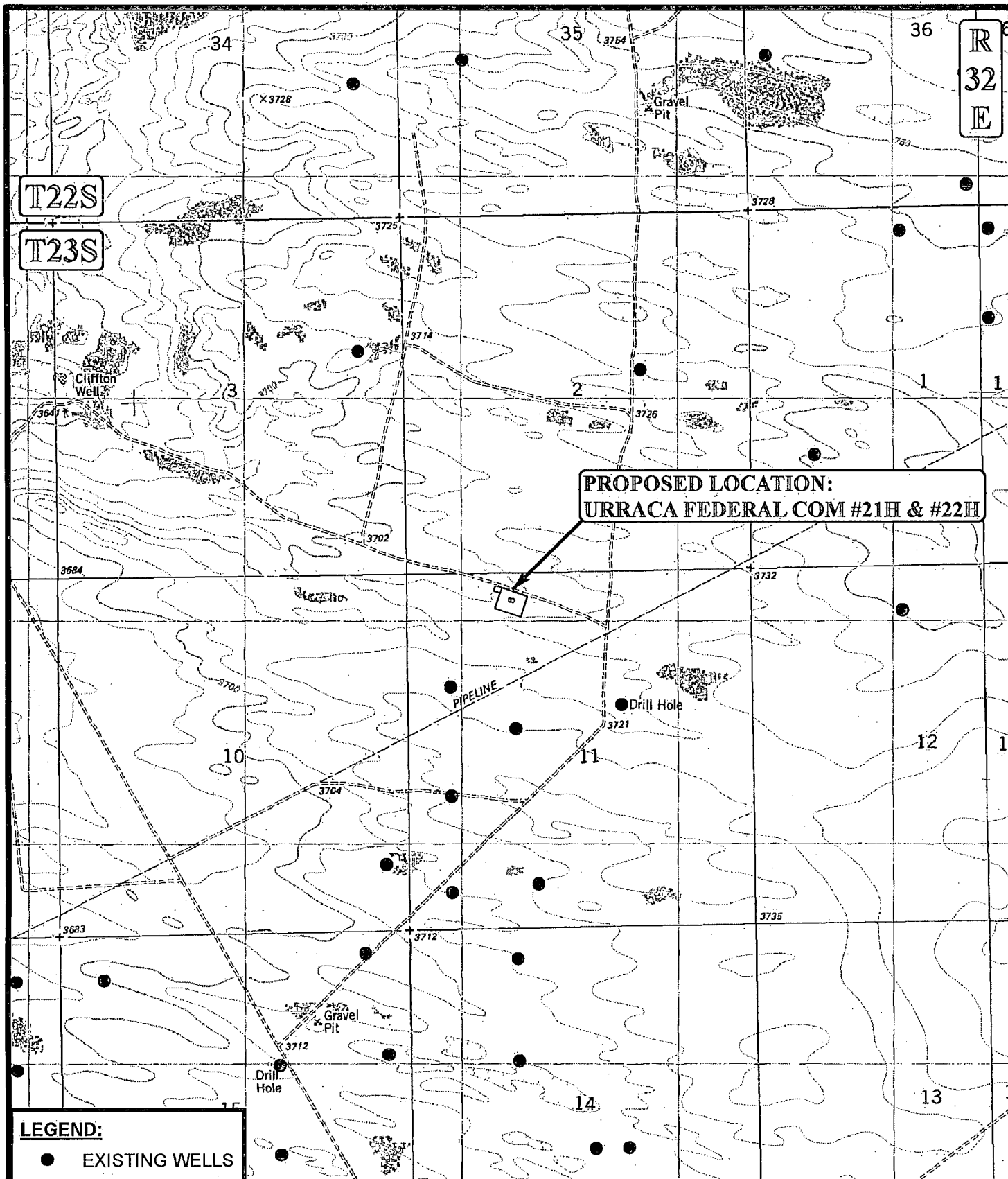
**CIMAREX ENERGY CO.**

**URRACA FEDERAL COM #21H & #22H**  
**SECTION 11, T23S, R32E, N.M.P.M.**  
**NE 1/4 NW 1/4**

**PUBLIC ACCESS ROAD MAP EXHIBIT B**



Corporate Office \* 85 South 200 East  
 Vernal, UT 84078 \* (435) 789-1017



SCALE: 1" = 2000'  
DRAWN BY: L.S.  
DATE DRAWN: 12-09-13

REVISED: 00-00-00



**CIMAREX ENERGY CO.**

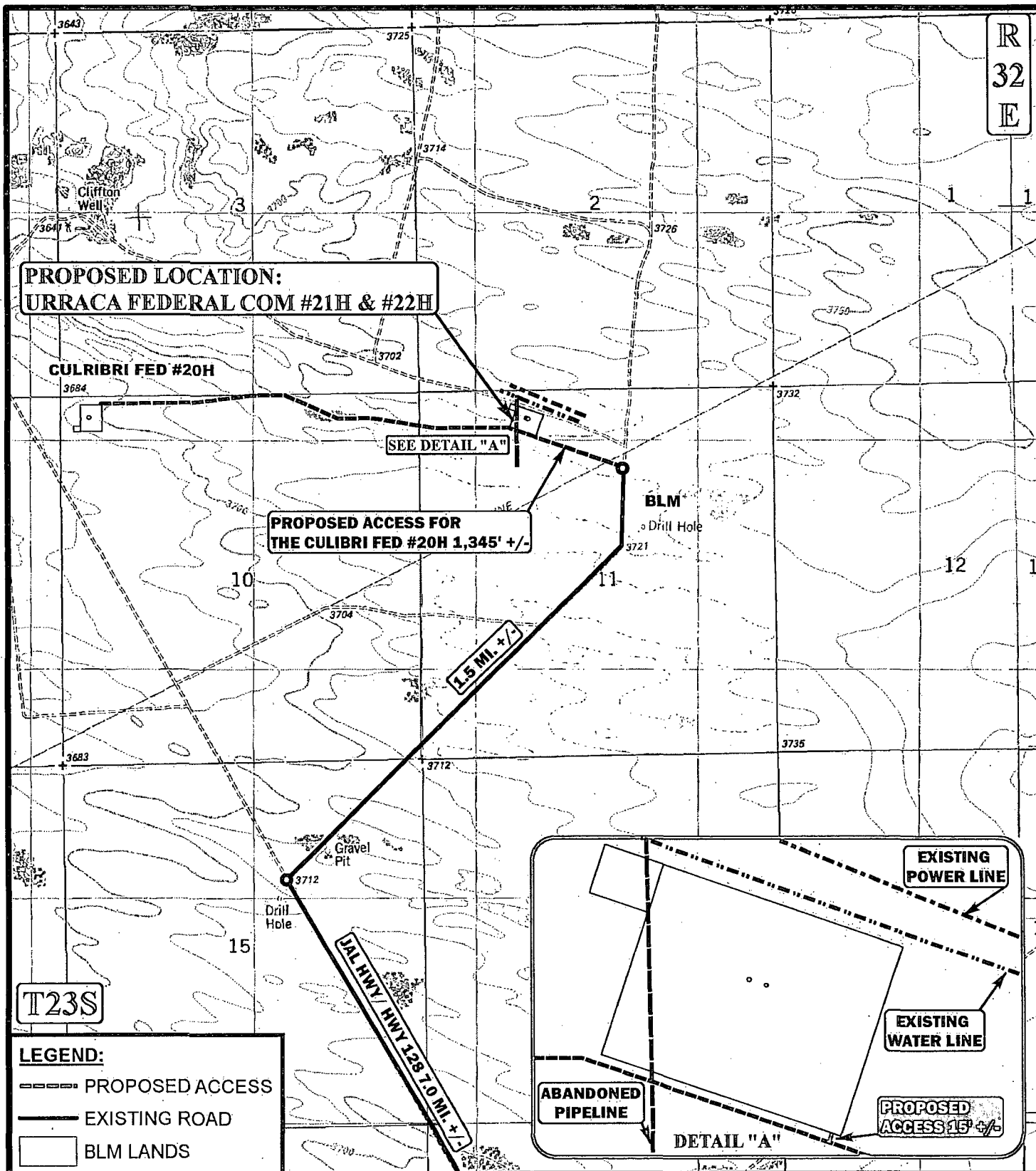
URRACA FEDERAL COM #21H & #22H  
SECTION 11, T23S, R32E, N.M.P.M.  
NE 1/4 NW 1/4

**USGS TOPOGRAPHIC MAP**

**EXHIBIT C**



Corporate Office \* 85 South 200 East  
Vernal, UT 84078 \* (435) 789-1017



\*PARCEL DATA SHOWN HAS BEEN OBTAINED FROM VARIOUS SOURCES AND SHOULD BE USED FOR MAPPING, GRAPHIC AND PLANNING PURPOSES ONLY. NO WARRANTY IS MADE BY UINTEH ENGINEERING & LAND SURVEYING (UELS) FOR ACCURACY OF THE PARCEL DATA.

SCALE: 1" = 2000'

REVISED: 00-00-00

DRAWN BY: L.S.

DATE DRAWN: 12-09-13



**CIMAREX ENERGY CO.**

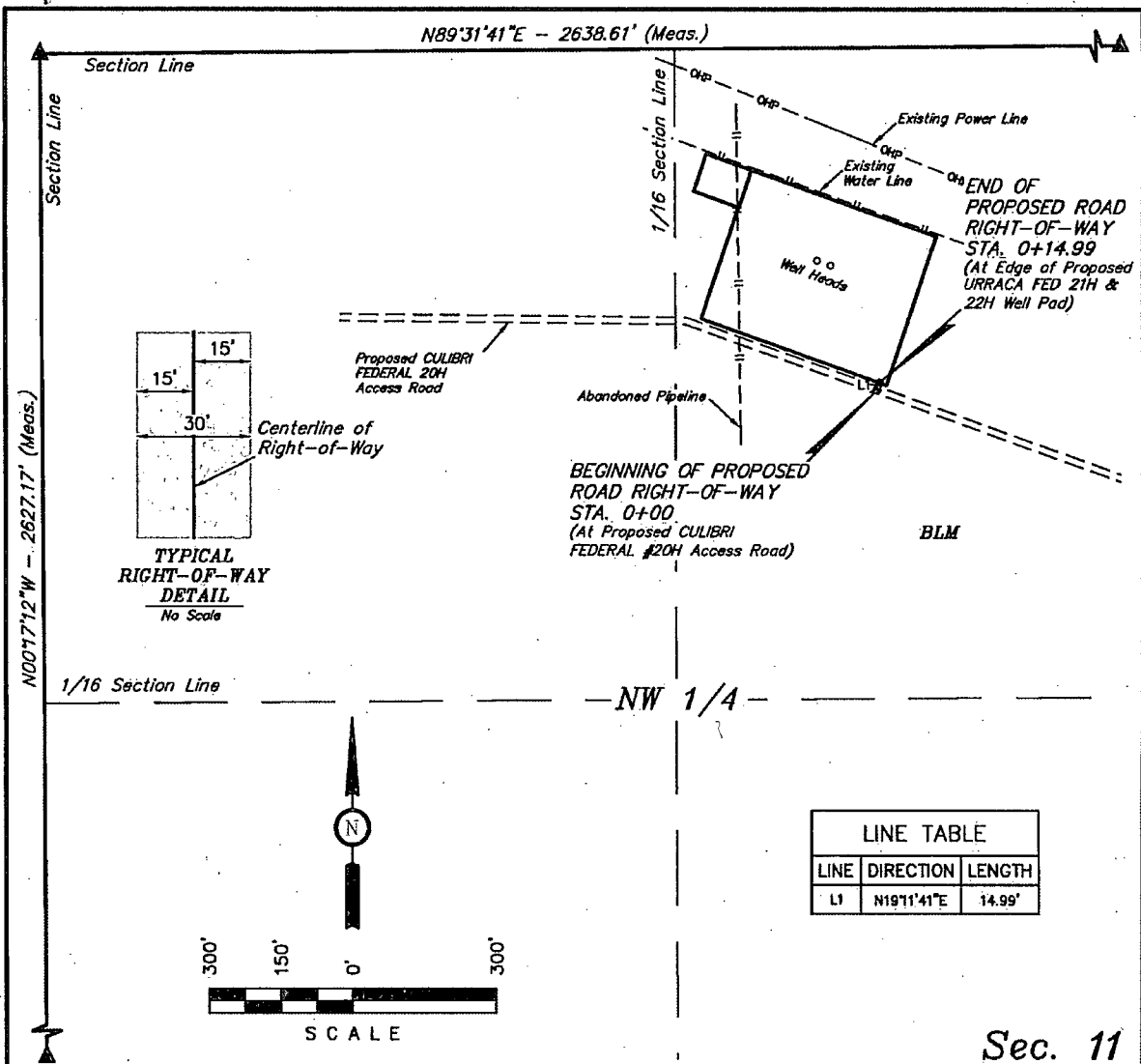
URRACA FEDERAL COM #21H & #22H  
SECTION 11, T23S, R32E, N.M.P.M.  
NE 1/4 NW 1/4

**ACCESS ROAD MAP**

**EXHIBIT C-1**



Corporate Office \* 85 South 200 East  
Vernal, UT 84078 \* (435) 789-1017



Sec. 11

### ROAD RIGHT-OF-WAY DESCRIPTION

A 30' WIDE RIGHT-OF-WAY 15' ON EACH SIDE OF THE FOLLOWING DESCRIBED CENTERLINE.

BEGINNING AT A POINT IN THE NE 1/4 NW 1/4 OF SECTION 11, T23S, R32E, N.M.P.M., WHICH BEARS S52°00'69\"W 1136.60' FROM THE NORTH 1/4 CORNER OF SAID SECTION 11, THENCE N19°11'41\"E 14.99' TO A POINT IN THE NE 1/4 NW 1/4 OF SAID SECTION 11, WHICH BEARS S52°25'50\"W 1124.03 FROM THE NORTH 1/4 CORNER OF SAID SECTION 11. THE SIDE LINES OF SAID DESCRIBED RIGHT-OF-WAY BEING SHORTENED OR ELONGATED TO MEET THE GRANTOR'S PROPERTY LINES. BASIS OF BEARINGS IS A G.P.S. OBSERVATION. CONTAINS 0.010 ACRES MORE OR LESS.

BEGINNING OF ROAD STA. 0+00 BEARS  
S52°00'69\"W 1136.60' FROM THE NORTH 1/4  
CORNER OF SECTION 11, T23S, R32E,  
N.M.P.M.

END OF ROAD STA. 0+14.99 BEARS  
S52°25'50\"W 1124.03' FROM THE NORTH 1/4  
CORNER OF SECTION 11, T23S, R32E,  
N.M.P.M.

#### RIGHT-OF-WAY LENGTHS

DESCRIPTION	FEET	ACRES	RODS
BLM	14.99	0.010	0.91

▲ = SECTION CORNERS LOCATED.

NOTES:

THIS IS TO CERTIFY THAT THE ABOVE PLAT WAS PREPARED FROM FIELD NOTES OF ACTUAL SURVEYS MADE BY ME OR UNDER MY SUPERVISION AND THAT THE SAME ARE TRUE AND CORRECT TO THE BEST OF MY KNOWLEDGE AND BELIEF.

REGISTERED LAND SURVEYOR  
REGISTRATION NO. 12446  
STATE OF NEW MEXICO

12-26-13



Corporate Office \* 85 South 200 East  
Vernal, UT 84078 \* (435) 789-1017



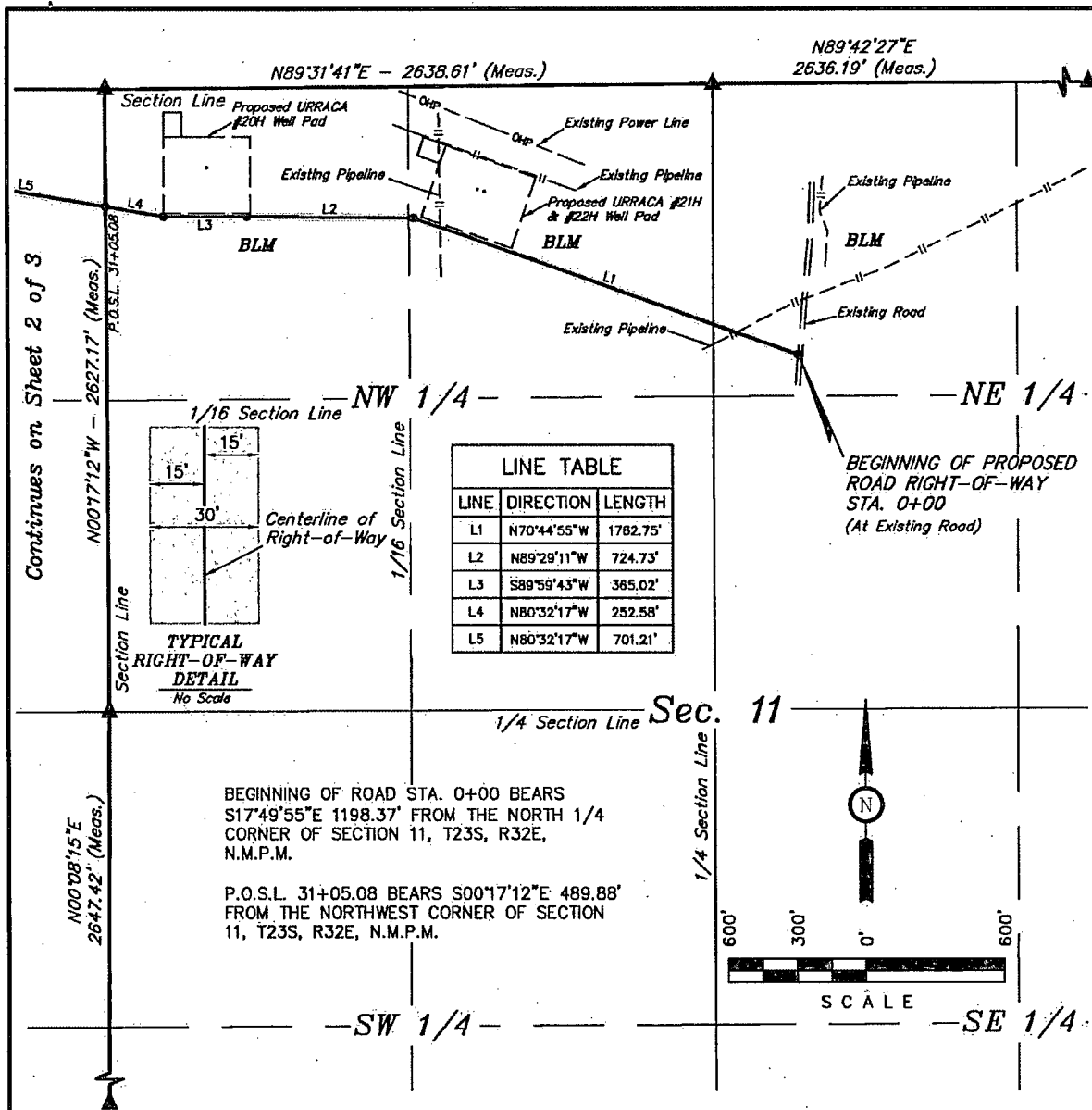
CIMAREX ENERGY CO.

URRACA FEDERAL COM #21H & #22H  
SECTION 11, T23S, R32E, N.M.P.M.  
NE 1/4 NW 1/4

DRAWN BY: B.D.H. SCALE: 1" = 300'  
DATE: 12-17-13 REVISED:

ACCESS ROAD R-O-W

EXHIBIT C-2



RIGHT-OF-WAY LENGTHS			
DESCRIPTION	FEET	ACRES	RODS
SEC. 11, NE 1/4	387.73	0.267	23.50
SEC. 11, NW 1/4	2717.35	1.871	164.69
SEC. 10, NE 1/4	2728.59	1.879	165.37
SEC. 10, NW 1/4	2047.35	1.410	124.08
TOTAL	7881.02	5.428	477.64

- ▲ = SECTION CORNERS LOCATED.  
 △ = SECTION CORNERS RE-ESTABLISHED.  
 (Not Set on Ground.)

**NOTES:**

- The maximum grade of existing ground for the proposed access road is ±1%.

CERTIFICATION OF SURVEY  
 THIS IS TO CERTIFY THAT THE ABOVE PLAN WAS PREPARED FROM FIELD NOTES OF ACTUAL SURVEYS MADE BY ME OR UNDER MY SUPERVISION AND THAT THE SAME ARE TRUE AND CORRECT TO THE BEST OF MY KNOWLEDGE AND BELIEF.  
 [Signature]  
 REGISTERED LAND SURVEYOR  
 REGISTRATION NO. 12449-S  
 STATE OF NEW MEXICO 02-12-14

Sheet 1 of 3



Corporate Office \* 85 South 200 East  
 Vernal, UT 84078 \* (435) 789-1017



**CIMAREX ENERGY CO.**

COLIBRI FEDERAL #20H  
 SECTION 10, T23S, R32E, N.M.P.M.  
 321' FNL 439' FWL

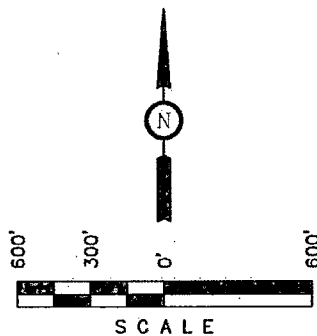
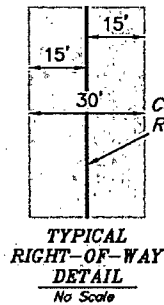
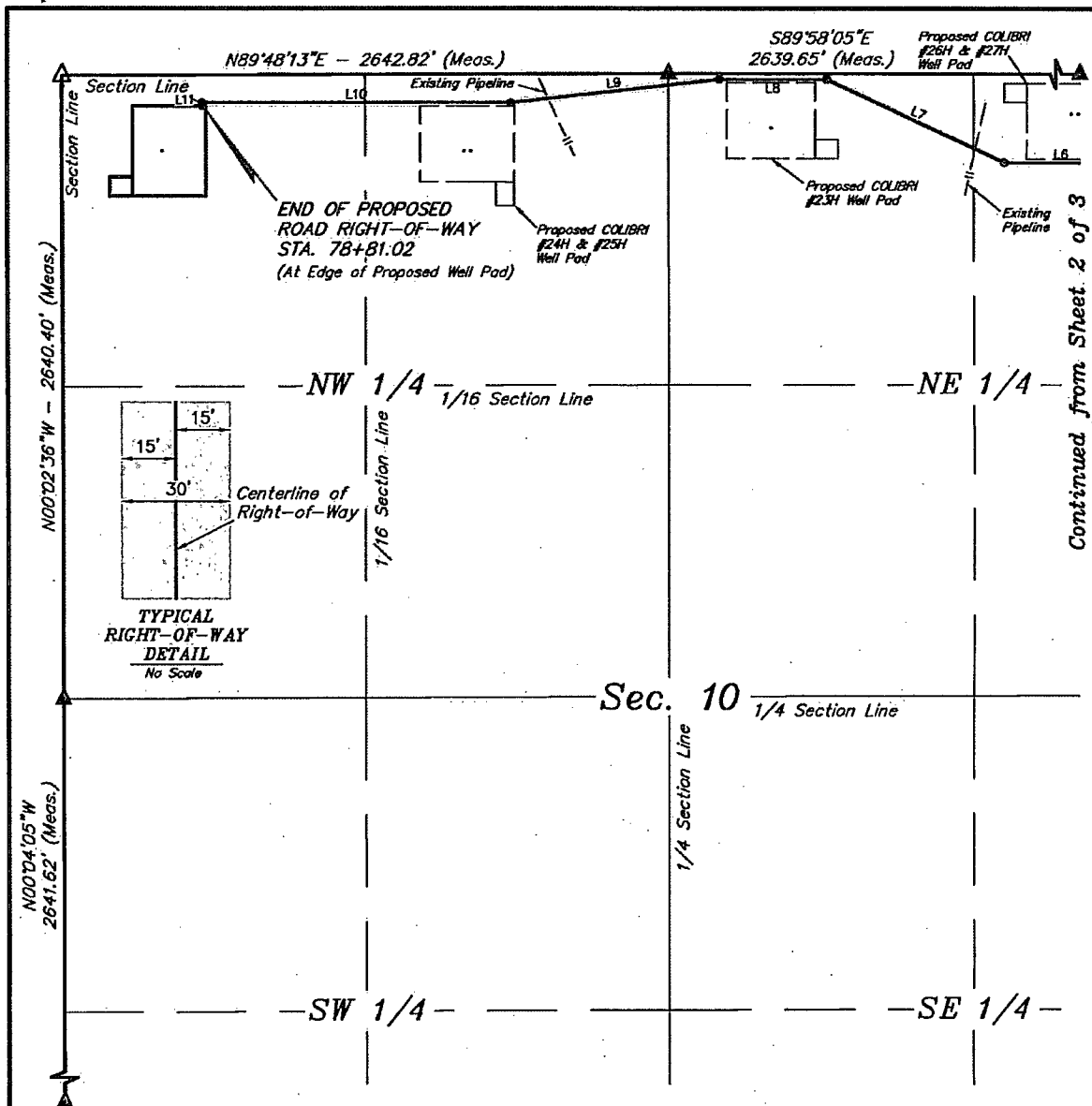
DRAWN BY: B.D.H. SCALE: 1" = 600'  
 DATE: 01-10-14 REVISED: 02-12-14

**ACCESS ROAD R-O-W**

**EXHIBIT C-2**







P.O.S.L. STA. 31+05.08 BEARS S86°05'16\"W  
2033.18' FROM THE NORTH 1/4 CORNER OF  
SECTION 11, T23S, R32E, N.M.P.M.

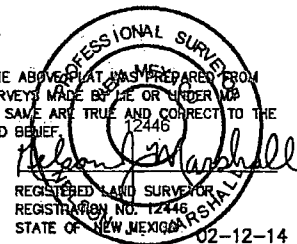
- ▲ = SECTION CORNERS LOCATED.
- △ = SECTION CORNERS RE-ESTABLISHED.  
(Not Set on Ground.)

**NOTES:**

- The maximum grade of existing ground for the proposed access road is ±1%.

LINE TABLE		
LINE	DIRECTION	LENGTH
L6	N89°58'15\"W	495.02'
L7	N65°38'40\"W	850.26'
L8	S89°59'06\"W	461.76'
L9	S83°44'55\"W	912.84'
L10	N89°57'57\"W	1340.03'
L11	S00°13'19\"W	14.82'

THIS IS TO CERTIFY THAT THE ABOVE PLAT WAS PREPARED FROM  
FIELD NOTES OF ACTUAL SURVEYS MADE BY ME OR UNDER MY  
SUPERVISION AND THAT THE SAME ARE TRUE AND CORRECT TO THE  
BEST OF MY KNOWLEDGE AND BELIEF.



Sheet 3 of 3



Corporate Office • 85 South 200 East  
Vernal, UT 84078 • (435) 789-1017



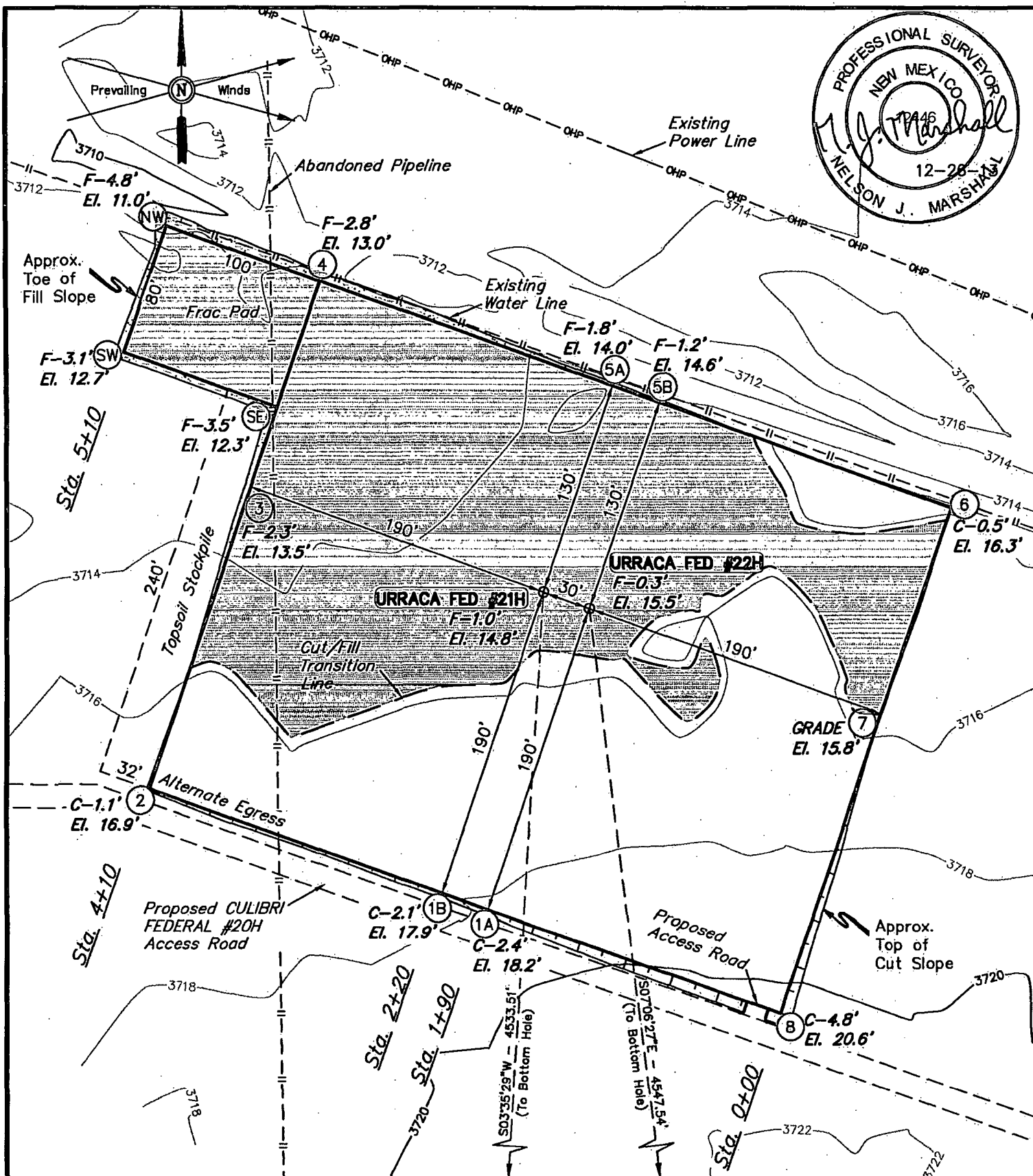
**CIMAREX ENERGY CO.**

COLIBRI FEDERAL #20H  
SECTION 10, T23S, R32E, N.M.P.M.  
321' FNL 439' FWL

DRAWN BY: B.D.H.      SCALE: 1" = 600'  
DATE: 01-10-14      REVISED: 02-12-14

**ACCESS ROAD R-O-W**

**EXHIBIT C-2**



ELEV. UNGRADED GROUND AT 21H LOC. STAKE = 3714.8' FINISHED GRADE ELEV. AT 21H LOC. STAKE = 3715.8'

#### NOTES:

- Flare pit is to be located a min. of 100' from the well head.
- Underground utilities shown on this sheet are for visualization purposes only, actual locations to be determined prior to construction.
- Earthwork calculations require a fill @ the location stakes. All fill is to be compacted to a minimum of 95% of maximum dry density obtained by AASHTO method t-99.



**CIMAREX ENERGY CO.**

**URRACA FEDERAL COM #21H & #22H  
SECTION 11, T23S, R32E, N.M.P.M.  
NE 1/4 NW 1/4**

DRAWN BY: B.D.H.

SCALE: 1" = 80'

DATE: 12-17-13

REVISED:

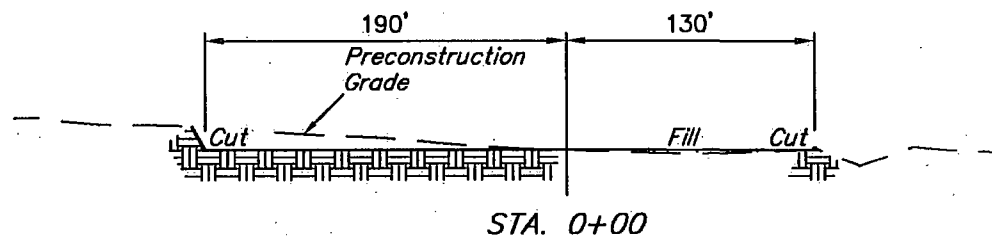
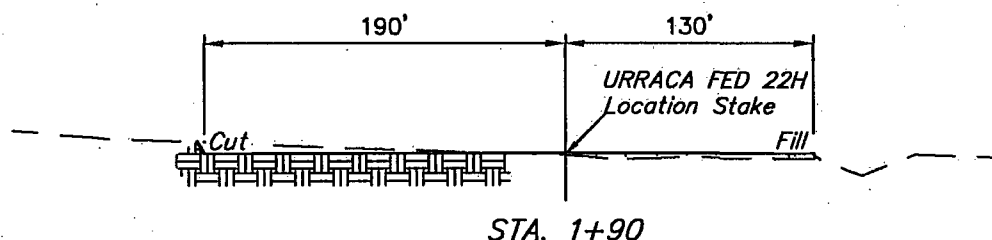
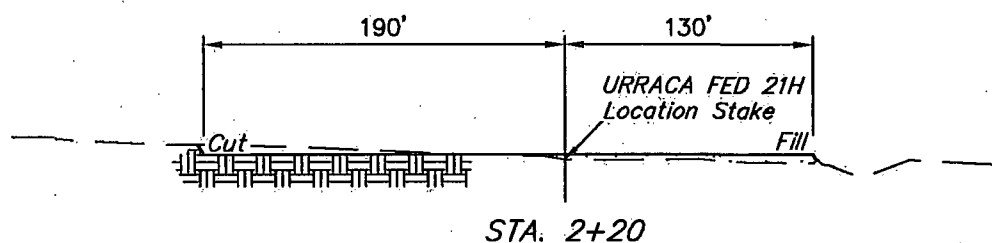
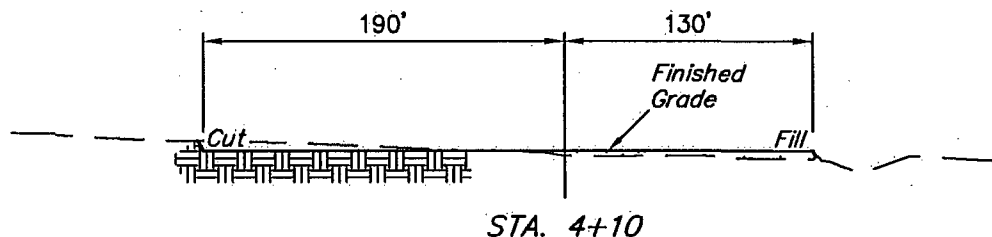
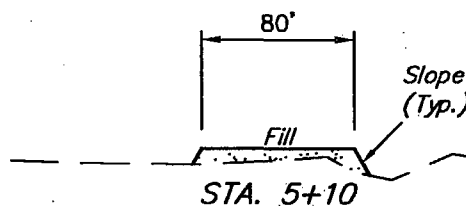
**LOCATION LAYOUT**

**EXHIBIT D**



Corporate Office \* 85 South 200 East  
Vernal, UT 84078 \* (435) 789-1017

1" = 40'  
X-Section  
Scale  
1" = 100'



APPROXIMATE EARTHWORK QUANTITIES		APPROXIMATE SURFACE DISTURBANCE AREAS		
(3") TOPSOIL STRIPPING	1,340 Cu. Yds.		DISTANCE	ACRES
REMAINING LOCATION	3,940 Cu. Yds.	WELL SITE DISTURBANCE	NA	±3.481
<b>TOTAL CUT</b>	<b>5,280 Cu. Yds.</b>	ACCESS ROAD DISTURBANCE	±14.99'	±0.010
<b>FILL</b>	<b>3,940 Cu. Yds.</b>	FLOW LINE DISTURBANCE	±35.87'	±0.008
EXCESS MATERIAL	1,340 Cu. Yds.			
TOPSOIL	1,340 Cu. Yds.			
<b>EXCESS UNBALANCE</b> (After Interim Rehabilitation)	<b>0 Cu. Yds.</b>	<b>TOTAL DISTURBANCE</b>	<b>±50.86'</b>	<b>±3.499</b>

- NOTES:
- Fill quantity includes 5% for compaction.
  - Topsoil should not be stripped below finished grade on substructure area.



**CIMAREX ENERGY CO.**

URRACA FEDERAL COM #21H & #22H  
SECTION 11, T23S, R32E, N.M.P.M.  
NE 1/4 NW 1/4



Corporate Office \* 85 South 200 East  
Vernal, UT 84078 \* (435) 789-1017

DRAWN BY: B.D.H.

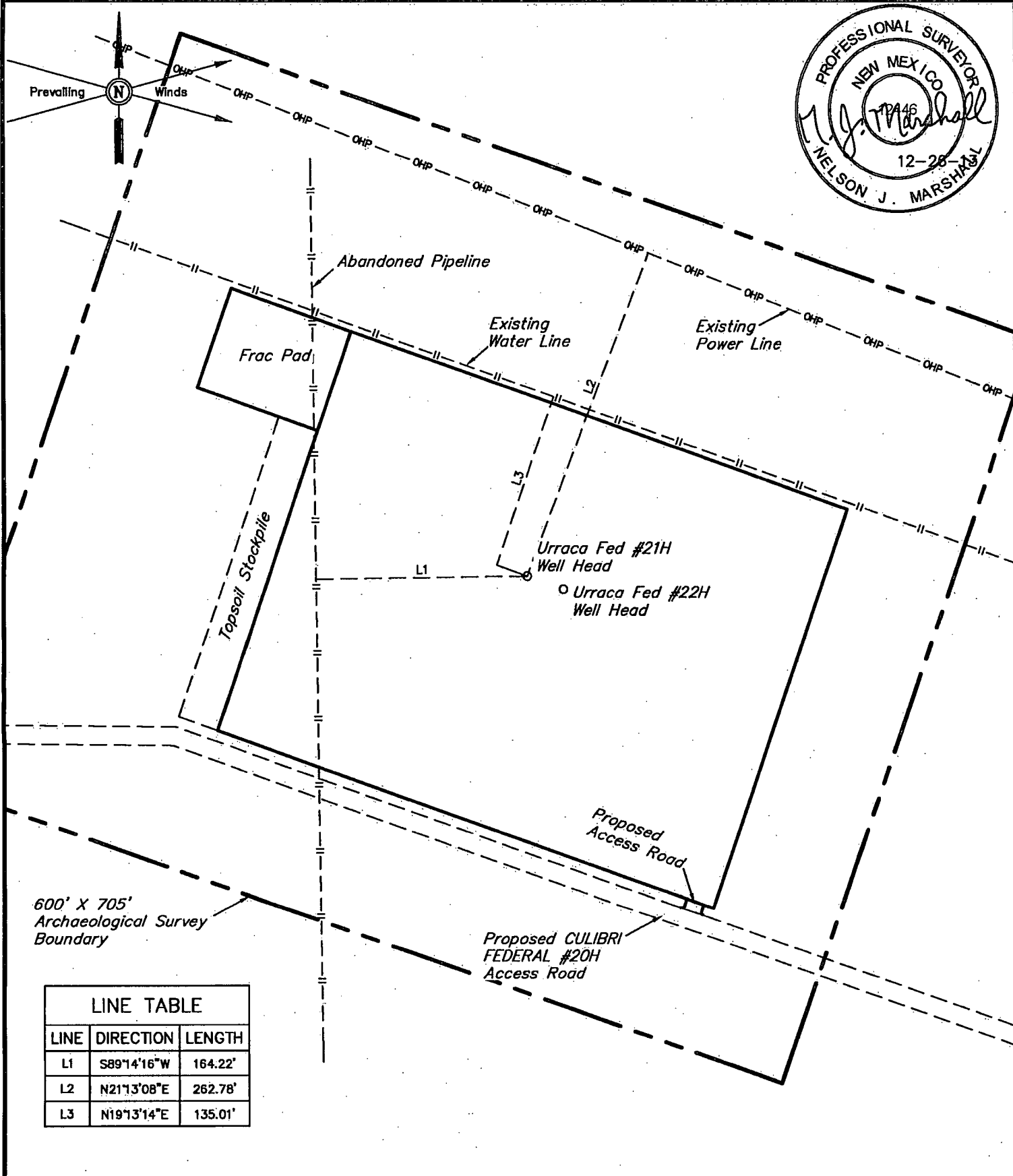
SCALE: AS SHOWN

DATE: 12-17-13

REVISED:

**TYPICAL CROSS SECTIONS**

**EXHIBIT D**



LINE TABLE

LINE	DIRECTION	LENGTH
L1	S89°14'16"W	164.22'
L2	N21°13'08"E	262.78'
L3	N19°13'14"E	135.01'

NOTES:

**CIMAREX**

**CIMAREX ENERGY CO.**

URRACA FEDERAL COM #21H & #22H  
SECTION 11, T23S, R32E, N.M.P.M.  
NE 1/4 NW 1/4

DRAWN BY: B.D.H.

SCALE: 1" = 100'

DATE: 12-17-13

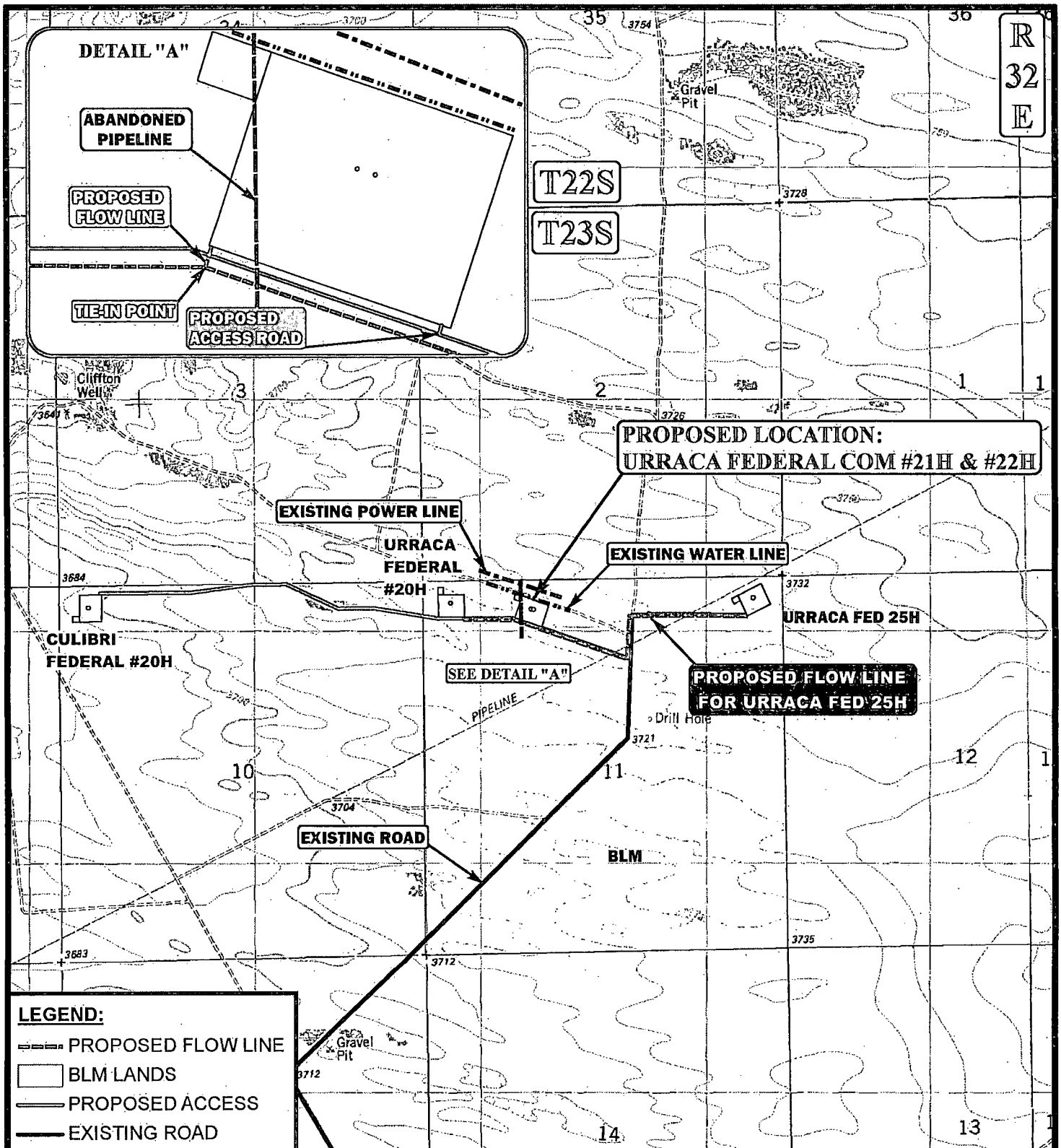
REVISED:

ARCHAEOLOGICAL SURVEY  
BOUNDARY

EXHIBIT D



Corporate Office \* 85 South 200 East  
Vernal, UT 84078 \* (435) 789-1017



APPROXIMATE TOTAL FLOW LINE DISTANCE = 35' +/-

\*PARCEL DATA SHOWN HAS BEEN OBTAINED FROM VARIOUS SOURCES AND SHOULD BE USED FOR MAPPING, GRAPHIC AND PLANNING PURPOSES ONLY. NO WARRANTY IS MADE BY UTAH ENGINEERING & LAND SURVEYING (UELS) FOR ACCURACY OF THE PARCEL DATA.

SCALE: 1" = 2000'

REVISED: 00-00-00

DRAWN BY: L.S.

DATE DRAWN: 12-10-13



CIMAREX ENERGY CO.

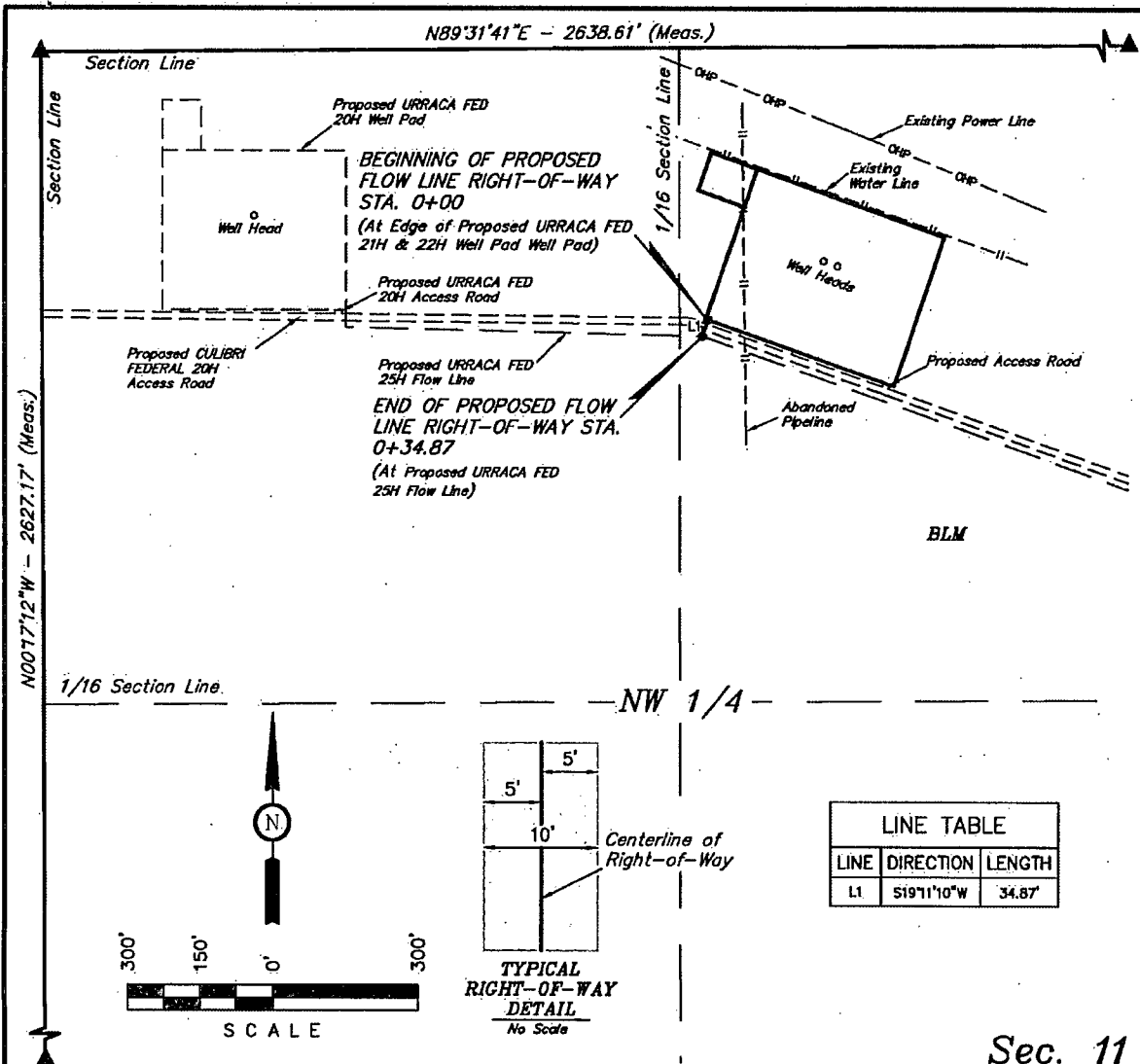
URRACA FEDERAL COM #21H & #22H  
SECTION 11, T23S, R32E, N.M.P.M.  
NE 1/4 NW 1/4

FLOW LINE MAP

EXHIBIT C



Corporate Office \* 85 South 200 East  
Vernal, UT 84078 \* (435) 789-1017



### FLOW LINE RIGHT-OF-WAY DESCRIPTION

A 10' WIDE RIGHT-OF-WAY 5' ON EACH SIDE OF THE FOLLOWING DESCRIBED CENTERLINE.

BEGINNING AT A POINT IN THE NE 1/4 NW 1/4 OF SECTION 11, T23S, R32E, N.M.P.M., WHICH BEARS S66°08'16"W 1376.97' FROM THE NORTH 1/4 CORNER OF SAID SECTION 11, THENCE S19°11'10"W 34.87' TO A POINT IN THE NE 1/4 NW 1/4 OF SAID SECTION 11, WHICH BEARS S65°05'44"W 1401.01' FROM THE NORTH 1/4 CORNER OF SAID SECTION 30. THE SIDE LINES OF SAID DESCRIBED RIGHT-OF-WAY BEING SHORTENED OR ELONGATED TO MEET THE GRANTOR'S PROPERTY LINES. BASIS OF BEARINGS IS A G.P.S. OBSERVATION. CONTAINS 0.008 ACRES MORE OR LESS.

BEGINNING OF FLOW LINE STA. 0+00 BEARS S66°08'16"W 1376.97' FROM THE NORTH 1/4 CORNER OF SECTION 11, T23S, R32E, N.M.P.M.

END OF FLOW LINE STA. 0+34.87 BEARS S65°05'44"W 1401.01' FROM THE NORTH 1/4 CORNER OF SECTION 11, T23S, R32E, N.M.P.M.

RIGHT-OF-WAY LENGTHS			
DESCRIPTION	FEET	ACRES	RODS
BLM	34.87	0.008	2.11

▲ = SECTION CORNERS LOCATED.

CERTIFICATE OF PROFESSIONAL SURVEYOR

THIS IS TO CERTIFY THAT THE ABOVE PLAT WAS PREPARED FROM FIELD NOTES OF ACTUAL SURVEYS MADE BY ME OR UNDER MY SUPERVISION AND THAT THE SAME ARE TRUE AND CORRECT TO THE BEST OF MY KNOWLEDGE AND BELIEF.

*Nelson Marshall*

REGISTERED LAND SURVEYOR  
REGISTRATION NO. 12446  
STATE OF NEW MEXICO

12-26-13

NOTES:



Corporate Office \* 85 South 200 East  
Vernal, UT 84078 \* (435) 789-1017



**CIMAREX ENERGY CO.**

URRACA FED 21H & 22H  
SECTION 11, T23S, R32E, N.M.P.M.  
NE 1/4 NW 1/4

DRAWN BY: B.D.H.

SCALE: 1" = 300'

DATE: 12-17-13

REVISED:

**FLOWLINE R-O-W**

**EXHIBIT G-1**

