

District I
1625 N. French Dr., Hobbs, NM 88240
Phone: (575) 393-6161 Fax: (575) 393-6720
District II
311 S. First St., Artesia, NM 88210
Phone: (575) 745-1283 Fax: (575) 745-9720
District III
1000 Rio Brazos Road, Aztec, NM 87410
Phone: (505) 334-6178 Fax: (505) 334-6170
District IV
1220 S. St. Francis Dr., Santa Fe, NM 87505
Phone: (505) 476-3460 Fax: (505) 476-3462

State of New Mexico
Energy, Minerals & Natural Resources Department
OIL CONSERVATION DIVISION
1220 South St. Francis Dr.
Santa Fe, NM 87505

HOBBS OCD

Form C-102

Revised August 1, 2011

Submit one copy to appropriate

District Office

RECEIVED

☐ AMENDED REPORT

WELL LOCATION AND ACREAGE DEDICATION PLAT

¹ API Number 30-025-41976	² Pool Code 5150	³ Pool Name BELL LAKE; BONE SPRING, NORTH
⁴ Property Code 313495	⁵ Property Name HOGNOSE VIPER 23 FED	⁶ Well Number 2H
⁷ GRID No. 6137	⁸ Operator Name DEVON ENERGY PRODUCTION COMPANY, L.P.	⁹ Elevation 3682.1

¹⁰ Surface Location

UL or lot no.	Section	Township	Range	Lot Idn	Feet from the	North/South line	Feet from the	East/West line	County
M	23	23 S	33 E		200	SOUTH	900	WEST	LEA

¹¹ Bottom Hole Location If Different From Surface

UL or lot no.	Section	Township	Range	Lot Idn	Feet from the	North/South line	Feet from the	East/West line	County
C	23	23 S	33 E		330	NORTH	1980	WEST	LEA

¹² Dedicated Acres 160	¹³ Joint or Infill	¹⁴ Consolidation Code	¹⁵ Order No.
---	-------------------------------	----------------------------------	-------------------------

No allowable will be assigned to this completion until all interests have been consolidated or a non-standard unit has been approved by the division.

<p>N89°48'55"E 2638.26 FT</p> <p>NW CORNER SEC. 23 LAT. = 32.2974530°N LONG. = 103.5516745°W NMSP EAST (FT) N = 472826.30 E = 782860.12</p> <p>BOTTOM OF HOLE LAT. = 32.2965238°N LONG. = 103.5452686°W NMSP EAST (FT) N = 472502.75 E = 784842.00</p> <p>W O CORNER SEC. 23 LAT. = 32.2901991°N LONG. = 103.5516779°W NMSP EAST (FT) N = 470187.30 E = 782878.31</p> <p>HOGNOSE VIPER "23" FED #2H ELEV. = 3682.1 LAT. = 32.2834708°N (NAD83) LONG. = 103.5487538°W NMSP EAST (FT) N = 467746.14 E = 783798.28</p> <p>SURFACE LOCATION SW CORNER SEC. 23 LAT. = 32.2829270°N LONG. = 103.5516698°W NMSP EAST (FT) N = 467541.76 E = 782900.10</p> <p>S O CORNER SEC. 23 LAT. = 32.2829093°N LONG. = 103.5431420°W NMSP EAST (FT) N = 467554.62 E = 785535.61</p> <p>SE CORNER SEC. 23 LAT. = 32.2828926°N LONG. = 103.5346083°W NMSP EAST (FT) N = 467568.09 E = 788172.96</p> <p>NOTE: LATITUDE AND LONGITUDE COORDINATES ARE SHOWN USING THE NORTH AMERICAN DATUM OF 1983 (NAD83). LISTED NEW MEXICO STATE PLANE EAST COORDINATES ARE GRID (NAD83). BASIS OF BEARING AND DISTANCES USED ARE NEW MEXICO STATE PLANE EAST COORDINATES MODIFIED TO THE SURFACE.</p>		<p>" OPERATOR CERTIFICATION</p> <p>I hereby certify that the information contained herein is true and complete to the best of my knowledge and belief, and that this organization either owns a working interest or unleased mineral interest in the land including the proposed bottom hole location or has a right to drill this well at this location pursuant to a contract with an owner of such a mineral or working interest, or to a voluntary pooling agreement or a compulsory pooling order heretofore entered by the division.</p> <p><i>D. H. Cook</i> 2/26/2014 Signature Date David H. Cook Regulatory Specialist Printed Name david.cook@dmn.com E-mail Address</p> <p>" SURVEYOR CERTIFICATION</p> <p>I hereby certify that the well location shown on this plat was plotted from field notes of actual surveys made by me or under my supervision, and that the same is true and correct to the best of my belief.</p> <p>DECEMBER 1, 2013 Date of Survey FELIX F. JARAMILLO Signature and Seal of Professional Surveyor Certificate Number SURVEY NO. 3402</p>
---	--	---

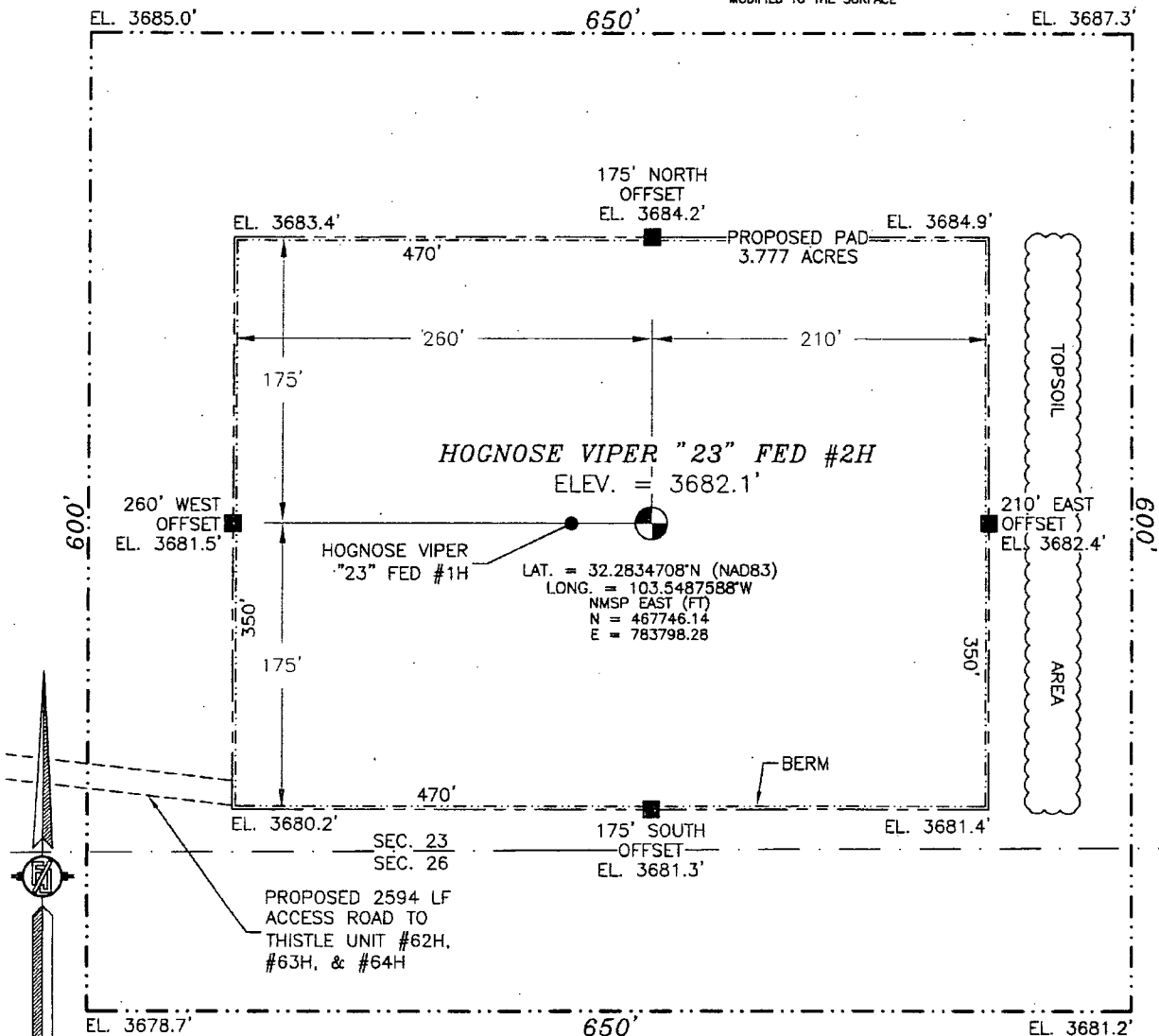
PP: 200 FSL & 900 FWL

JUL 16 2014

pm

SECTION 23, TOWNSHIP 23 SOUTH, RANGE 33 EAST, N.M.P.M.
LEA COUNTY, STATE OF NEW MEXICO
SITE MAP

NOTE: LATITUDE AND LONGITUDE COORDINATES ARE SHOWN USING THE NORTH AMERICAN DATUM OF 1983 (NAD83). LISTED NEW MEXICO STATE PLANE EAST COORDINATES ARE GRID (NAD83). BASIS OF BEARING AND DISTANCES USED ARE NEW MEXICO STATE PLANE EAST COORDINATES MODIFIED TO THE SURFACE



010 50 100 200

SCALE 1" = 100'

DIRECTIONS TO LOCATION

FROM STATE HIGHWAY 128 AND CR 21 (DELAWARE BASIN) GO NORTH ON CR 21 4.0 MILES, TURN LEFT ON PAVED XL ROAD AND GO WEST 3.3 MILES, TURN RIGHT ON CALICHE ROAD AND GO NORTH 0.8 MILES, BEND LEFT AND GO NORTHWEST 0.12 MILES, TURN RIGHT AND GO NORTHEAST 0.25 MILES, BEND RIGHT AND GO EAST 0.45 MILES TO THISTLE UNIT #62H, #63H, & #64H PAD AND FROM SOUTHEAST PAD CORNER FOLLOW PROPOSED ROAD SURVEY FLAGS EAST 2594' TO THE SOUTHWEST CORNER OF PAD FOR THIS LOCATION.

DEVON ENERGY PRODUCTION COMPANY, L.P.

HOGNOSE VIPER "23" FED #2H

LOCATED 200 FT. FROM THE SOUTH LINE

AND 900 FT. FROM THE WEST LINE OF

SECTION 23, TOWNSHIP 23 SOUTH,

RANGE 33 EAST, N.M.P.M.

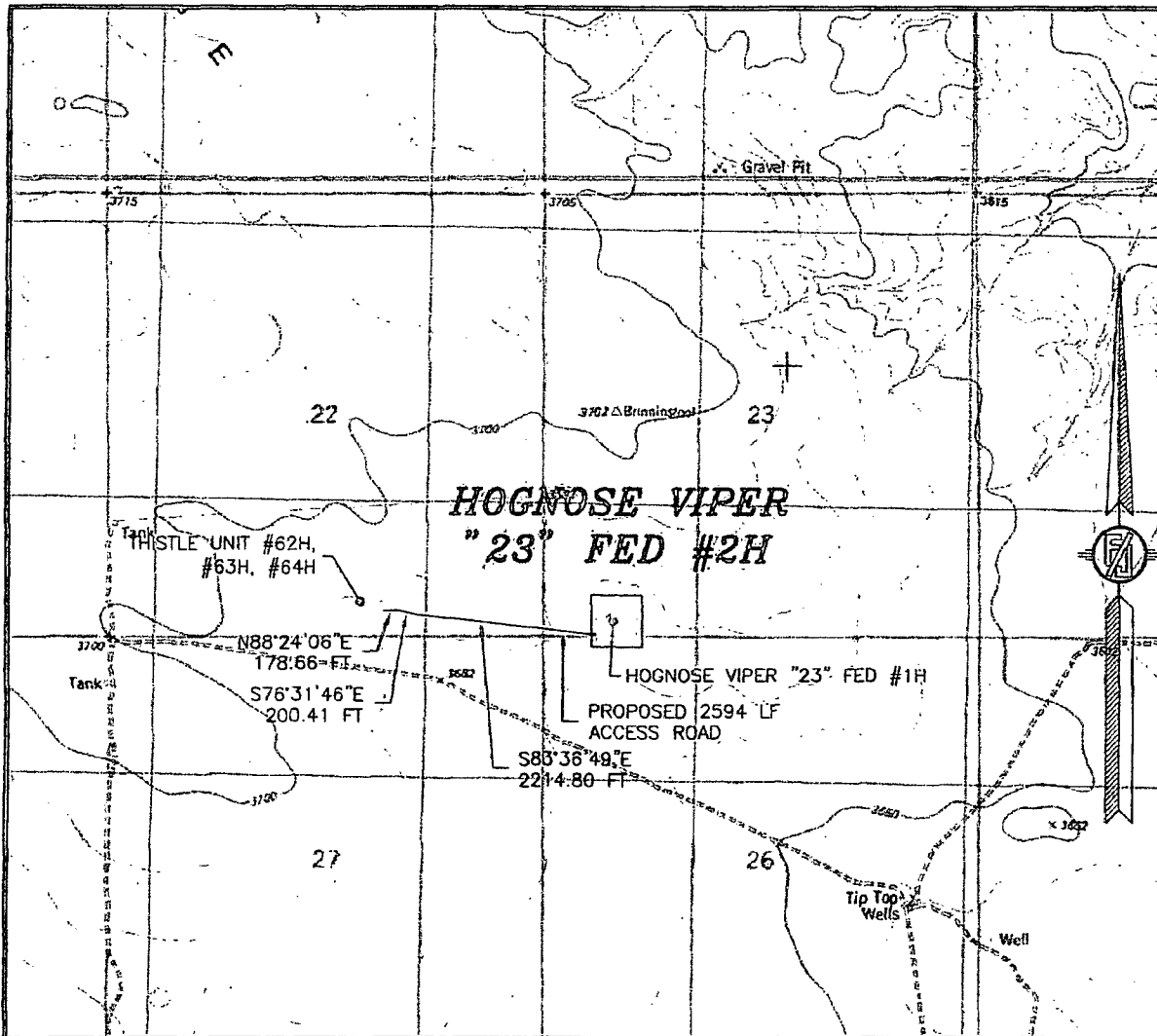
LEA COUNTY, STATE OF NEW MEXICO

DECEMBER 3, 2013

SURVEY NO. 2402

MADRON SURVEYING, INC. 301 SOUTH CANAL (575) 234-3341 CARLSBAD, NEW MEXICO

SECTION 23, TOWNSHIP 23 SOUTH, RANGE 33 EAST, N.M.P.M.
LEA COUNTY, STATE OF NEW MEXICO
LOCATION VERIFICATION MAP



USGS QUAD MAP:
TIP TOP WELLS

NOT TO SCALE

DEVON ENERGY PRODUCTION COMPANY, L.P.
HOGNOSE VIPER "23" FED #2H
LOCATED 200 FT. FROM THE SOUTH LINE
AND 900 FT. FROM THE WEST LINE OF
SECTION 23, TOWNSHIP 23 SOUTH,
RANGE 33 EAST, N.M.P.M.
LEA COUNTY, STATE OF NEW MEXICO

DECEMBER 3, 2013

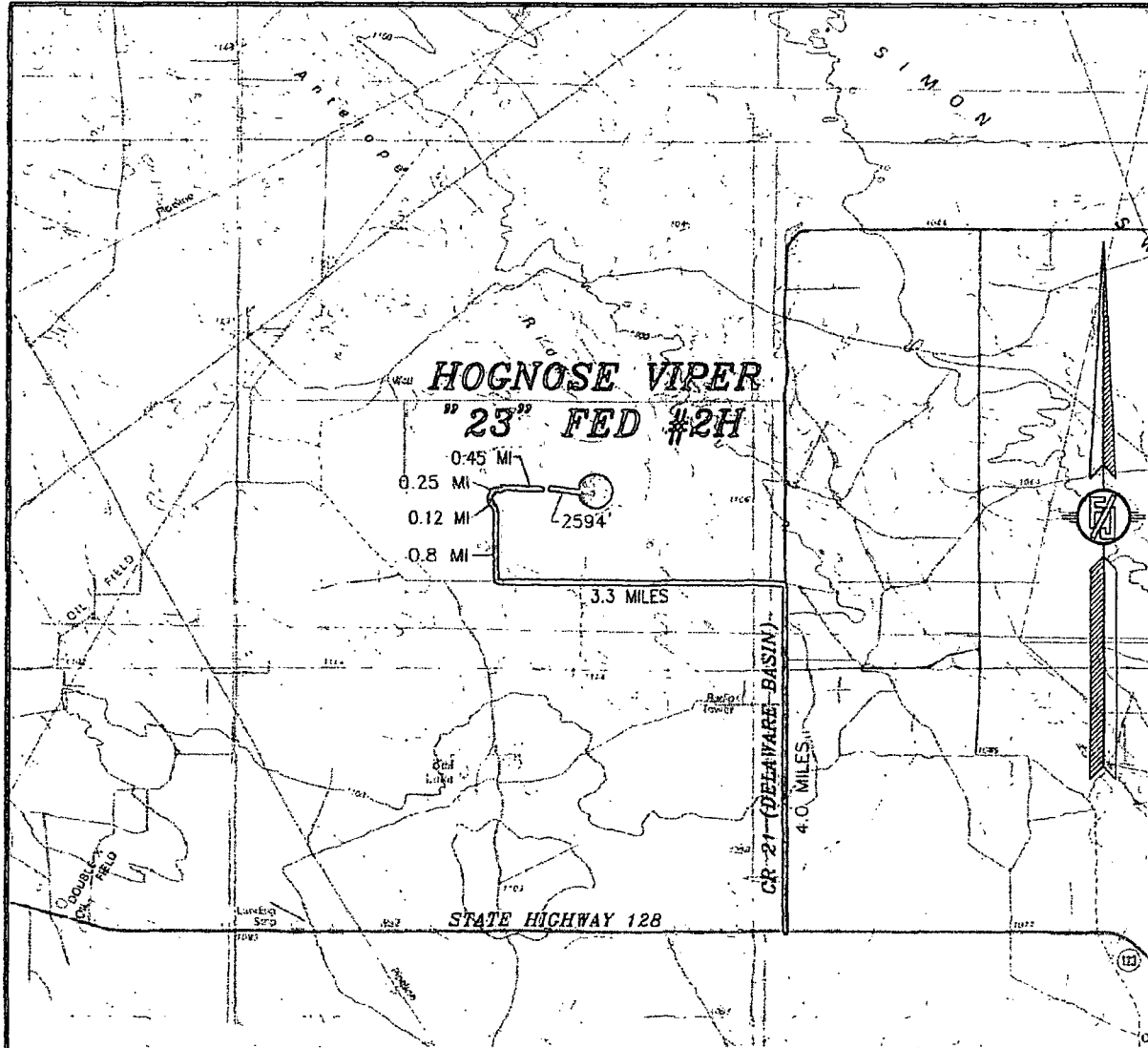
MADRON SURVEYING, INC.

301 SOUTH CANAL
(575) 234-3341

CARLSBAD, NEW MEXICO

SURVEY NO. 2402

SECTION 23, TOWNSHIP 23 SOUTH, RANGE 33 EAST, N.M.P.M.
LEA COUNTY, STATE OF NEW MEXICO
VICINITY MAP



NOT TO SCALE

DEVON ENERGY PRODUCTION COMPANY, L.P.

HOGNOSE VIPER "23" FED #2H

LOCATED 200 FT. FROM THE SOUTH LINE
AND 900 FT. FROM THE WEST LINE OF
SECTION 23, TOWNSHIP 23 SOUTH,
RANGE 33 EAST, N.M.P.M.
LEA COUNTY, STATE OF NEW MEXICO

DECEMBER 3, 2013

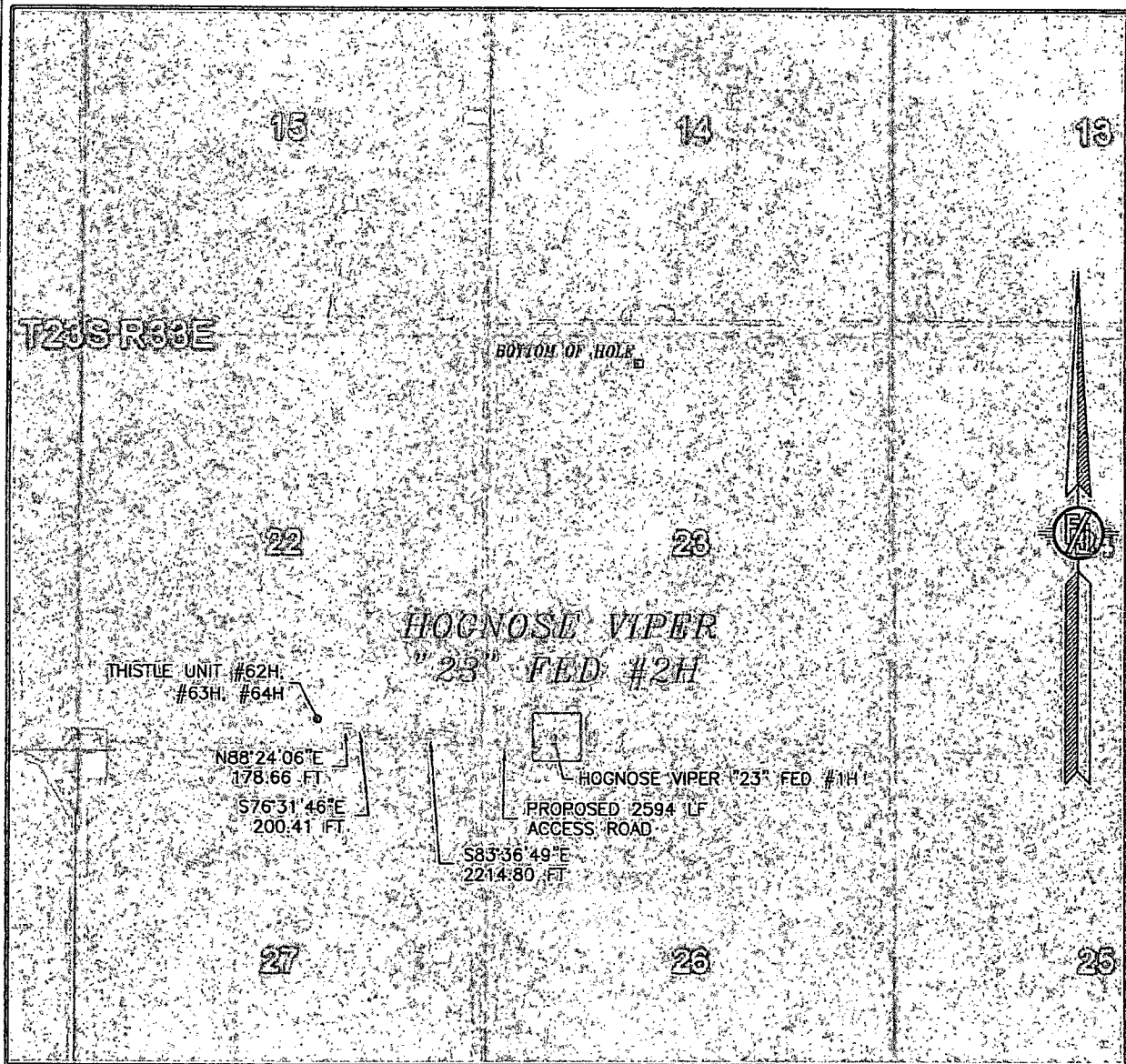
DIRECTIONS TO LOCATION

FROM STATE HIGHWAY 128 AND CR 21 (DELAWARE BASIN) GO NORTH ON CR 21 4.0 MILES, TURN LEFT ON PAVED XL ROAD AND GO WEST 3.3 MILES, TURN RIGHT ON CALICHE ROAD AND GO NORTH 0.8 MILES, BEND LEFT AND GO NORTHWEST 0.12 MILES, TURN RIGHT AND GO NORTHEAST 0.25 MILES, BEND RIGHT AND GO EAST 0.43 MILES TO THISTLE UNIT #62H, #63H, & #64H PAD AND FROM SOUTHEAST PAD CORNER FOLLOW PROPOSED ROAD SURVEY FLAGS EAST 2594' TO THE SOUTHWEST CORNER OF PAD FOR THIS LOCATION.

MADRON SURVEYING, INC. 301 SOUTH CANAL (575) 234-3341 CARLSBAD, NEW MEXICO

SURVEY NO. 2402

SECTION 23, TOWNSHIP 23 SOUTH, RANGE 33 EAST, N.M.P.M.
LEA COUNTY, STATE OF NEW MEXICO
AERIAL PHOTO



NOT TO SCALE
AERIAL PHOTO:
GOOGLE EARTH
MARCH 2012

DEVON ENERGY PRODUCTION COMPANY, L.P.
HOGNOSE VIPER "23" FED #2H
LOCATED 200 FT. FROM THE SOUTH LINE
AND 900 FT. FROM THE WEST LINE OF
SECTION 23, TOWNSHIP 23 SOUTH,
RANGE 33 EAST, N.M.P.M.
LEA COUNTY, STATE OF NEW MEXICO

DECEMBER 3, 2013

SURVEY NO. 2402

MADRON SURVEYING, INC. 301 SOUTH CANAL (575) 234-3341 CARLSBAD, NEW MEXICO

