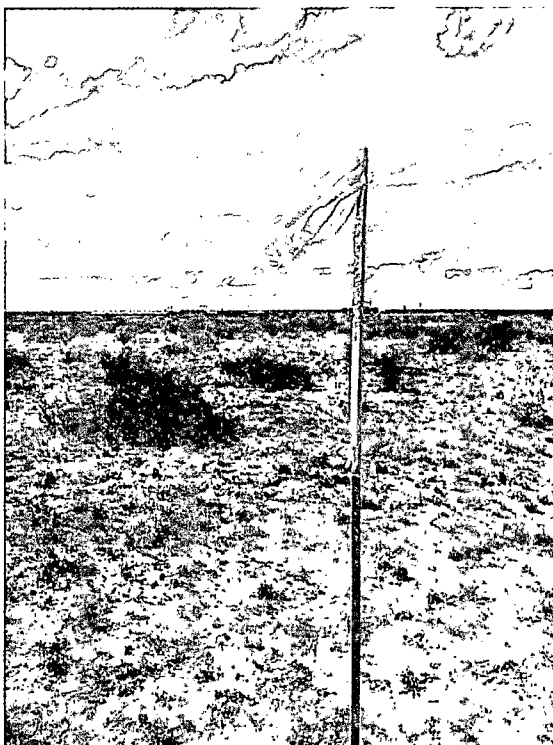


July 2014

**C-144 Permit Package for  
Trucker BRK State 2H  
Temporary Pit  
Section 2 T24S R33E Lea County NM**



*View north showing topography and vegetation*

HOBBS OCD

JUL 24 2014

RECEIVED

**Prepared for  
Yates Petroleum Corporation  
Artesia, New Mexico**

**Prepared by  
R.T. Hicks Consultants, Ltd.  
Albuquerque, New Mexico**

JUL 25 2014

# R. T. HICKS CONSULTANTS, LTD.

901 Rio Grande Blvd NW ▲ Suite F-142 ▲ Albuquerque, NM 87104 ▲ 505.266.5004 ▲ Fax: 505.266-0745

July 22, 2014

Dr. Tomas Oberding  
NMOCD District 1  
1625 French Drive  
Hobbs, NM 88240  
Via E-Mail and US Mail

RE: Yates Petroleum, Trucker BRK State 2H Reserve Pit

Dear Tomas:

On behalf of Yates Petroleum Corporation, R.T. Hicks Consultants, Ltd. is pleased to submit the C-144 application package for the above-referenced wells. Please note the following:

1. The minimum distance between the bottom of the pit and groundwater is 56 feet. We believe groundwater is significantly deeper than this minimum value. Therefore, a geologist with Hicks Consultants will log the cuttings of the auger rig when boring the on-site rathole. We will provide your office with several days' notice so that you may witness this event.
2. The Design/Construction, O&M and Closure Plans are verbatim after the recently-approved Convoy 2H application.
3. The Closure Plan is worded in a manner that will allow Yates to implement the closure protocols outlined in our 6/17/14 submission to OCD. Although our proposal is contrary to current OCD Policy, we strongly believe our method:
  - a. Is fully consistent with the Pit Rule because
    - i. the geomembrane cap covers the stabilized cuttings, not side slopes that did not come into contact with drilling waste
    - ii. the geomembrane cap is 20-mil LLDPE liner (reclaimed and new)
    - iii. the surface of the geomembrane cap slopes to prevent moisture collection
  - b. Provides a better closure system because it reduces the flux of chloride to groundwater relative to the protocols of the OCD Policy.
4. Until OCD completes their review of our 6/17/14 submission (sent to you on 7/8/14), Yates will abide by the OCD Policy and place the geomembrane cap over the footprint of the pit and will use only new liner with welded seams.
5. Plates 1 and 2 are based on a previously-approved C-144 application,
6. We anticipate "in place" burial of stabilized solids.
7. This letter and application is copied to the State Land Office to notify the surface landowner of the operator's intent to use on-site burial.
8. I certify that Hicks Consultants performed a visual inspection of the site.

If you have any questions or concerns regarding this application, please contact me. As always, we appreciate your work ethic and attention to detail.

Sincerely,  
R.T. Hicks Consultants



Randall Hicks  
Principal

Copy: Yates Petroleum Corporation  
NM State Land Office, Ed Martin

# **C-144 and Site Specific Information for Temporary Pit**

**R.T. Hicks Consultants, Ltd.**

901 Rio Grande Blvd. NW, Suite F-142  
Albuquerque, NM 87104

District I  
1625 N. French Dr., Hobbs, NM 88240  
District II  
811 S. First St., Artesia, NM 88210  
District III  
1000 Rio Brazos Road, Aztec, NM 87410  
District IV  
1220 S. St. Francis Dr., Santa Fe, NM 87505

State of New Mexico  
Energy Minerals and Natural Resources  
Department  
Oil Conservation Division  
1220 South St. Francis Dr.  
Santa Fe, NM 87505

Form C-144  
Revised June 6, 2013

For temporary pits, below-grade tanks, and multi-well fluid management pits, submit to the appropriate NMOCD District Office.  
For permanent pits submit to the Santa Fe Environmental Bureau office and provide a copy to the appropriate NMOCD District Office.

Pit, Below-Grade Tank, or  
Proposed Alternative Method Permit or Closure Plan Application

HOBBS OCD

Type of action: ☐ Below grade tank registration  
☒ Permit of a pit or proposed alternative method  
☐ Closure of a pit, below-grade tank, or proposed alternative method  
☐ Modification to an existing permit/or registration  
☐ Closure plan only submitted for an existing permitted or non-permitted pit below-grade tank, or proposed alternative method

JUL 24 2014

RECEIVED

**Instructions:** Please submit one application (Form C-144) per individual pit, below-grade tank or alternative request

Please be advised that approval of this request does not relieve the operator of liability should operations result in pollution of surface water, ground water or the environment. Nor does approval relieve the operator of its responsibility to comply with any other applicable governmental authority's rules, regulations or ordinances.

1.  
Operator: Yates Petroleum Corporation OGRID #: 25575  
Address: 105 S. 4<sup>th</sup> Street, Artesia, NM 88210  
Facility or well name: Trucker BRK State 2H  
API Number: 30-025-41972 OCD Permit Number: PI-06559  
U/L or Qtr/Qtr M Section 2 Township 24S Range 33E County: Lea  
Center of Proposed Design: Latitude N 32 14 27.25 Longitude W 103 33 03.58 NAD: ☐ 1927 ☒ 1983  
Surface Owner: ☐ Federal ☒ State ☐ Private ☐ Tribal Trust or Indian Allotment

2.  
☒ **Pit:** Subsection F, G or J of 19.15.17.11 NMAC  
Temporary: ☒ Drilling ☐ Workover  
☐ Permanent ☐ Emergency ☐ Cavitation ☐ P&A ☐ Multi-Well Fluid Management Low Chloride Drilling Fluid ☐ yes ☒ no  
☒ Lined ☐ Unlined Liner type: Thickness 20 mil ☒ LLDPE ☐ HDPE ☐ PVC ☐ Other \_\_\_\_\_  
☒ String-Reinforced  
Liner Seams: ☒ Welded ☐ Factory ☐ Other \_\_\_\_\_ Volume 24,223 bbl Dimensions: L 140 x W 190 x D 7-8 ft Reserve

3.  
☐ **Below-grade tank:** Subsection I of 19.15.17.11 NMAC  
Volume: \_\_\_\_\_ bbl Type of fluid: \_\_\_\_\_  
Tank Construction material: \_\_\_\_\_  
☐ Secondary containment with leak detection ☐ Visible sidewalls, liner, 6-inch lift and automatic overflow shut-off  
☐ Visible sidewalls and liner ☐ Visible sidewalls only ☐ Other \_\_\_\_\_  
Liner type: Thickness \_\_\_\_\_ mil ☐ HDPE ☐ PVC ☐ Other \_\_\_\_\_

4.  
☐ **Alternative Method:**  
Submittal of an exception request is required. Exceptions must be submitted to the Santa Fe Environmental Bureau office for consideration of approval.

5.  
**Fencing:** Subsection D of 19.15.17.11 NMAC (Applies to permanent pits, temporary pits, and below-grade tanks)  
☐ Chain link, six feet in height, two strands of barbed wire at top (Required if located within 1000 feet of a permanent residence, school, hospital, institution or church)  
☒ Four foot height, four strands of barbed wire evenly spaced between one and four feet  
☐ Alternate. Please specify \_\_\_\_\_

6. **Netting:** Subsection E of 19.15.17.11 NMAC (*Applies to permanent pits and permanent open top tanks*)

- ☐ Screen ☐ Netting ☐ Other \_\_\_\_\_
- ☐ Monthly inspections (If netting or screening is not physically feasible)

7. **Signs:** Subsection C of 19.15.17.11 NMAC

- ☐ 12"x 24", 2" lettering, providing Operator's name, site location, and emergency telephone numbers
- ☒ Signed in compliance with 19.15.16.8 NMAC

HOBBS OCD

JUL 24 2014

8. **Variances and Exceptions:**

Justifications and/or demonstrations of equivalency are required. Please refer to 19.15.17 NMAC for guidance.

*Please check a box if one or more of the following is requested, if not leave blank:*

- ☐ Variance(s): Requests must be submitted to the appropriate division district for consideration of approval.
- ☐ Exception(s): Requests must be submitted to the Santa Fe Environmental Bureau office for consideration of approval.

RECEIVED

9. **Siting Criteria (regarding permitting):** 19.15.17.10 NMAC

*Instructions: The applicant must demonstrate compliance for each siting criteria below in the application. Recommendations of acceptable source material are provided below. Siting criteria does not apply to drying pads or above-grade tanks.*

### **General siting**

#### **Ground water is less than 25 feet below the bottom of a low chloride temporary pit or below-grade tank.**

- ☐ NM Office of the State Engineer - iWATERS database search; ☐ USGS; ☐ Data obtained from nearby wells

☐ Yes ☐ No  
☒ NA

#### **Ground water is less than 50 feet below the bottom of a Temporary pit, permanent pit, or Multi-Well Fluid Management pit.**

NM Office of the State Engineer - iWATERS database search; USGS; Data obtained from nearby wells See Figures 1 & 2

☐ Yes ☒ No  
☐ NA

Within incorporated municipal boundaries or within a defined municipal fresh water well field covered under a municipal ordinance adopted pursuant to NMSA 1978, Section 3-27-3, as amended. **(Does not apply to below grade tanks) See Figure 5**

- Written confirmation or verification from the municipality; Written approval obtained from the municipality

☐ Yes ☒ No

Within the area overlying a subsurface mine. **(Does not apply to below grade tanks) See Figure 7**

- Written confirmation or verification or map from the NM EMNRD-Mining and Mineral Division

☐ Yes ☒ No

Within an unstable area. **(Does not apply to below grade tanks) See Figure 8**

- Engineering measures incorporated into the design; NM Bureau of Geology & Mineral Resources; USGS; NM Geological Society; Topographic map

☐ Yes ☒ No

Within a 100-year floodplain. **(Does not apply to below grade tanks) See Figure 9**

- FEMA map

☐ Yes ☒ No

### **Below Grade Tanks**

Within 100 feet of a continuously flowing watercourse, significant watercourse, lake bed, sinkhole, wetland or playa lake (measured from the ordinary high-water mark).

- Topographic map; Visual inspection (certification) of the proposed site

☐ Yes ☐ No

Within 200 horizontal feet of a spring or a fresh water well used for public or livestock consumption;

- NM Office of the State Engineer - iWATERS database search; Visual inspection (certification) of the proposed site

☐ Yes ☐ No

#### **Temporary Pit using Low Chloride Drilling Fluid** (maximum chloride content 15,000 mg/liter)

Within 100 feet of a continuously flowing watercourse, or any other significant watercourse or within 200 feet of any lakebed, sinkhole, or playa lake (measured from the ordinary high-water mark). (Applies to low chloride temporary pits.)

- Topographic map; Visual inspection (certification) of the proposed site

☐ Yes ☐ No

Within 300 feet from a occupied permanent residence, school, hospital, institution, or church in existence at the time of initial application.

- Visual inspection (certification) of the proposed site; Aerial photo; Satellite image

☐ Yes ☐ No

Within 200 horizontal feet of a spring or a private, domestic fresh water well used by less than five households for domestic or stock watering purposes, or 300 feet of any other fresh water well or spring, in existence at the time of the initial application.

NM Office of the State Engineer - iWATERS database search; Visual inspection (certification) of the proposed site

☐ Yes ☐ No

Within 100 feet of a wetland.

- US Fish and Wildlife Wetland Identification map; Topographic map; Visual inspection (certification) of the proposed site

☐ Yes ☐ No

### **Temporary Pit Non-low chloride drilling fluid**

Within 300 feet of a continuously flowing watercourse, or any other significant watercourse, or within 200 feet of any lakebed, sinkhole, or playa lake (measured from the ordinary high-water mark). **See Figure 3**

- Topographic map; Visual inspection (certification) of the proposed site

☐ Yes ☒ No

Within 300 feet from a permanent residence, school, hospital, institution, or church in existence at the time of initial application.

- Visual inspection (certification) of the proposed site; Aerial photo; Satellite image. **See Figure 4**

☐ Yes ☒ No

Within 500 horizontal feet of a spring or a private, domestic fresh water well used by less than five households for domestic or stock watering purposes, or 1000 feet of any other fresh water well or spring, in the existence at the time of the initial application;

- NM Office of the State Engineer - iWATERS database search; Visual inspection (certification) of the proposed site

☐ Yes ☒ No

**See Figures 1 & 2**

Within 300 feet of a wetland. **See Figure 6**

- US Fish and Wildlife Wetland Identification map; Topographic map; Visual inspection (certification) of the proposed site

☐ Yes ☒ No

### **Permanent Pit or Multi-Well Fluid Management Pit**

Within 300 feet of a continuously flowing watercourse, or 200 feet of any other significant watercourse, or lakebed, sinkhole, or playa lake (measured from the ordinary high-water mark).

- Topographic map; Visual inspection (certification) of the proposed site

☐ Yes ☐ No

Within 1000 feet from a permanent residence, school, hospital, institution, or church in existence at the time of initial application.

- Visual inspection (certification) of the proposed site; Aerial photo; Satellite image

☐ Yes ☐ No

Within 500 horizontal feet of a spring or a fresh water well used for domestic or stock watering purposes, in existence at the time of initial application.

- NM Office of the State Engineer - iWATERS database search; Visual inspection (certification) of the proposed site

☐ Yes ☐ No

Within 500 feet of a wetland.

- US Fish and Wildlife Wetland Identification map; Topographic map; Visual inspection (certification) of the proposed site

☐ Yes ☐ No

10.

#### **Temporary Pits, Emergency Pits, and Below-grade Tanks Permit Application Attachment Checklist:** Subsection B of 19.15.17.9 NMAC

**Instructions:** Each of the following items must be attached to the application. Please indicate, by a check mark in the box, that the documents are attached.

- ☐ Hydrogeologic Report (Below-grade Tanks) - based upon the requirements of Paragraph (4) of Subsection B of 19.15.17.9 NMAC
- ☒ Hydrogeologic Data (Temporary and Emergency Pits) - based upon the requirements of Paragraph (2) of Subsection B of 19.15.17.9 NMAC
- ☒ Siting Criteria Compliance Demonstrations - based upon the appropriate requirements of 19.15.17.10 NMAC
- ☒ Design Plan - based upon the appropriate requirements of 19.15.17.11 NMAC
- ☒ Operating and Maintenance Plan - based upon the appropriate requirements of 19.15.17.12 NMAC
- ☒ Closure Plan (Please complete Boxes 14 through 18, if applicable) - based upon the appropriate requirements of Subsection C of 19.15.17.9 NMAC and 19.15.17.13 NMAC

☐ Previously Approved Design (attach copy of design) API Number: \_\_\_\_\_ or Permit Number: \_\_\_\_\_

11.

#### **Multi-Well Fluid Management Pit Checklist:** Subsection B of 19.15.17.9 NMAC

**Instructions:** Each of the following items must be attached to the application. Please indicate, by a check mark in the box, that the documents are attached.

- ☐ Design Plan - based upon the appropriate requirements of 19.15.17.11 NMAC
- ☐ Operating and Maintenance Plan - based upon the appropriate requirements of 19.15.17.12 NMAC
- ☐ A List of wells with approved application for permit to drill associated with the pit.
- ☐ Closure Plan (Please complete Boxes 14 through 18, if applicable) - based upon the appropriate requirements of Subsection C of 19.15.17.9 NMAC and 19.15.17.13 NMAC
- ☐ Hydrogeologic Data - based upon the requirements of Paragraph (4) of Subsection B of 19.15.17.9 NMAC
- ☐ Siting Criteria Compliance Demonstrations - based upon the appropriate requirements of 19.15.17.10 NMAC

☐ Previously Approved Design (attach copy of design) API Number: \_\_\_\_\_ or Permit Number: \_\_\_\_\_

**HOBBS OCD**

**JUL 24 2014**

**RECEIVED**

12.

**Permanent Pits Permit Application Checklist:** Subsection B of 19.15.17.9 NMAC

*Instructions: Each of the following items must be attached to the application. Please indicate, by a check mark in the box, that the documents are attached.*

- ☐ Hydrogeologic Report - based upon the requirements of Paragraph (1) of Subsection B of 19.15.17.9 NMAC  
☐ Siting Criteria Compliance Demonstrations - based upon the appropriate requirements of 19.15.17.10 NMAC  
☐ Climatological Factors Assessment  
☐ Certified Engineering Design Plans - based upon the appropriate requirements of 19.15.17.11 NMAC  
☐ Dike Protection and Structural Integrity Design - based upon the appropriate requirements of 19.15.17.11 NMAC  
☐ Leak Detection Design - based upon the appropriate requirements of 19.15.17.11 NMAC  
☐ Liner Specifications and Compatibility Assessment - based upon the appropriate requirements of 19.15.17.11 NMAC  
☐ Quality Control/Quality Assurance Construction and Installation Plan  
☐ Operating and Maintenance Plan - based upon the appropriate requirements of 19.15.17.12 NMAC  
☐ Freeboard and Overtopping Prevention Plan - based upon the appropriate requirements of 19.15.17.11 NMAC  
☐ Nuisance or Hazardous Odors, including H<sub>2</sub>S, Prevention Plan  
☐ Emergency Response Plan  
☐ Oil Field Waste Stream Characterization  
☐ Monitoring and Inspection Plan  
☐ Erosion Control Plan  
☐ Closure Plan - based upon the appropriate requirements of Subsection C of 19.15.17.9 NMAC and 19.15.17.13 NMAC

HOBBS OCD

JUL 24 2014

RECEIVED

13.

**Proposed Closure:** 19.15.17.13 NMAC

*Instructions: Please complete the applicable boxes, Boxes 14 through 18, in regards to the proposed closure plan.*

- Type: ☒ Drilling ☐ Workover ☐ Emergency ☐ Cavitation ☐ P&A ☐ Permanent Pit ☐ Below-grade Tank ☐ Multi-well Fluid Management Pit  
☐ Alternative
- Proposed Closure Method: ☐ Waste Excavation and Removal  
☐ Waste Removal (Closed-loop systems only)  
☒ On-site Closure Method (Only for temporary pits and closed-loop systems)  
☒ In-place Burial ☐ On-site Trench Burial  
☐ Alternative Closure Method

14.

**Waste Excavation and Removal Closure Plan Checklist:** (19.15.17.13 NMAC) *Instructions: Each of the following items must be attached to the closure plan. Please indicate, by a check mark in the box, that the documents are attached.*

- ☐ Protocols and Procedures - based upon the appropriate requirements of 19.15.17.13 NMAC  
☐ Confirmation Sampling Plan (if applicable) - based upon the appropriate requirements of Subsection C of 19.15.17.13 NMAC  
☐ Disposal Facility Name and Permit Number (for liquids, drilling fluids and drill cuttings)  
☐ Soil Backfill and Cover Design Specifications - based upon the appropriate requirements of Subsection H of 19.15.17.13 NMAC  
☐ Re-vegetation Plan - based upon the appropriate requirements of Subsection H of 19.15.17.13 NMAC  
☐ Site Reclamation Plan - based upon the appropriate requirements of Subsection H of 19.15.17.13 NMAC

15.

**Siting Criteria (regarding on-site closure methods only):** 19.15.17.10 NMAC

*Instructions: Each siting criteria requires a demonstration of compliance in the closure plan. Recommendations of acceptable source material are provided below. Requests regarding changes to certain siting criteria require justifications and/or demonstrations of equivalency. Please refer to 19.15.17.10 NMAC for guidance.*

Ground water is less than 25 feet below the bottom of the buried waste. - NM Office of the State Engineer - iWATERS database search; USGS; Data obtained from nearby wells	<input type="checkbox"/> Yes <input checked="" type="checkbox"/> No <input type="checkbox"/> NA
Ground water is between 25-50 feet below the bottom of the buried waste - NM Office of the State Engineer - iWATERS database search; USGS; Data obtained from nearby wells	<input type="checkbox"/> Yes <input checked="" type="checkbox"/> No <input type="checkbox"/> NA
Ground water is more than 100 feet below the bottom of the buried waste. - NM Office of the State Engineer - iWATERS database search; USGS; Data obtained from nearby wells	<input checked="" type="checkbox"/> Yes <input type="checkbox"/> No <input type="checkbox"/> NA
Within 100 feet of a continuously flowing watercourse, or 200 feet of any other significant watercourse, lakebed, sinkhole, or playa lake (measured from the ordinary high-water mark). - Topographic map; Visual inspection (certification) of the proposed site	<input type="checkbox"/> Yes <input checked="" type="checkbox"/> No
Within 300 feet from a permanent residence, school, hospital, institution, or church in existence at the time of initial application. - Visual inspection (certification) of the proposed site; Aerial photo; Satellite image	<input type="checkbox"/> Yes <input checked="" type="checkbox"/> No
Within 300 horizontal feet of a private, domestic fresh water well or spring used for domestic or stock watering purposes, in existence at the time of initial application. - NM Office of the State Engineer - iWATERS database; Visual inspection (certification) of the proposed site	<input type="checkbox"/> Yes <input checked="" type="checkbox"/> No
Written confirmation or verification from the municipality; Written approval obtained from the municipality	<input type="checkbox"/> Yes <input checked="" type="checkbox"/> No
Within 300 feet of a wetland. US Fish and Wildlife Wetland Identification map; Topographic map; Visual inspection (certification) of the proposed site	<input type="checkbox"/> Yes <input checked="" type="checkbox"/> No
Within incorporated municipal boundaries or within a defined municipal fresh water well field covered under a municipal ordinance	<input type="checkbox"/> Yes <input checked="" type="checkbox"/> No



adopted pursuant to NMSA 1978, Section 3-27-3, as amended. - Written confirmation or verification from the municipality; Written approval obtained from the municipality	<input type="checkbox"/> Yes <input checked="" type="checkbox"/> No
Within the area overlying a subsurface mine. - Written confirmation or verification or map from the NM EMNRD-Mining and Mineral Division	<input type="checkbox"/> Yes <input checked="" type="checkbox"/> No
Within an unstable area. - Engineering measures incorporated into the design; NM Bureau of Geology & Mineral Resources; USGS; NM Geological Society; Topographic map	<input type="checkbox"/> Yes <input checked="" type="checkbox"/> No
Within a 100-year floodplain. - FEMA map	<input type="checkbox"/> Yes <input checked="" type="checkbox"/> No

16.  
**On-Site Closure Plan Checklist:** (19.15.17.13 NMAC) *Instructions: Each of the following items must be attached to the closure plan. Please indicate, by a check mark in the box, that the documents are attached.*

☒ Siting Criteria Compliance Demonstrations - based upon the appropriate requirements of 19.15.17.10 NMAC  
☒ Proof of Surface Owner Notice - based upon the appropriate requirements of Subsection E of 19.15.17.13 NMAC  
☐ Construction/Design Plan of Burial Trench (if applicable) based upon the appropriate requirements of Subsection K of 19.15.17.11 NMAC  
☒ Construction/Design Plan of Temporary Pit (for in-place burial of a drying pad) - based upon the appropriate requirements of 19.15.17.11 NMAC  
☒ Protocols and Procedures - based upon the appropriate requirements of 19.15.17.13 NMAC  
☐ Confirmation Sampling Plan (if applicable) - based upon the appropriate requirements of 19.15.17.13 NMAC  
☒ Waste Material Sampling Plan - based upon the appropriate requirements of 19.15.17.13 NMAC  
☐ Disposal Facility Name and Permit Number (for liquids, drilling fluids and drill cuttings or in case on-site closure standards cannot be achieved)  
☒ Soil Cover Design - based upon the appropriate requirements of Subsection H of 19.15.17.13 NMAC  
☒ Re-vegetation Plan - based upon the appropriate requirements of Subsection H of 19.15.17.13 NMAC  
☒ Site Reclamation Plan - based upon the appropriate requirements of Subsection H of 19.15.17.13 NMAC

17.  
**Operator Application Certification:**  
 I hereby certify that the information submitted with this application is true, accurate and complete to the best of my knowledge and belief.

Name (Print): Travis Hahn Title: Land Regulatory Agent  
 Signature: [Signature] Date: July 21, 2014  
 e-mail address: thahn@yatespetroleum.com Telephone: 575 748 4120

18.  
**OCD Approval:** ☒ Permit Application (including closure plan) ☐ Closure Plan (only) ☐ OCD Conditions (see attachment)

OCD Representative Signature: [Signature] Approval Date: 7-24-14  
 Title: Environment Specialist OCD Permit Number: P1-06559

19.  
**Closure Report (required within 60 days of closure completion):** 19.15.17.13 NMAC  
*Instructions: Operators are required to obtain an approved closure plan prior to implementing any closure activities and submitting the closure report. The closure report is required to be submitted to the division within 60 days of the completion of the closure activities. Please do not complete this section of the form until an approved closure plan has been obtained and the closure activities have been completed.*

☐ Closure Completion Date: \_\_\_\_\_

20.  
**Closure Method:**  
☐ Waste Excavation and Removal ☐ On-Site Closure Method ☐ Alternative Closure Method ☐ Waste Removal (Closed-loop systems only)  
☐ If different from approved plan, please explain.

21.  
**Closure Report Attachment Checklist:** *Instructions: Each of the following items must be attached to the closure report. Please indicate, by a check mark in the box, that the documents are attached.*

☐ Proof of Closure Notice (surface owner and division)  
☐ Proof of Deed Notice (required for on-site closure for private land only)  
☐ Plot Plan (for on-site closures and temporary pits)  
☐ Confirmation Sampling Analytical Results (if applicable)  
☐ Waste Material Sampling Analytical Results (required for on-site closure)  
☐ Disposal Facility Name and Permit Number  
☐ Soil Backfilling and Cover Installation  
☐ Re-vegetation Application Rates and Seeding Technique  
☐ Site Reclamation (Photo Documentation)

On-site Closure Location: Latitude \_\_\_\_\_ Longitude \_\_\_\_\_

**HOBBS OCD**  
**JUL 24 2014**  
**RECEIVED**  
 NAD 83 ☒ 1927 ☐ 1983

**Operator Closure Certification:**

I hereby certify that the information and attachments submitted with this closure report is true, accurate and complete to the best of my knowledge and belief. I also certify that the closure complies with all applicable closure requirements and conditions specified in the approved closure plan.

Name (Print): \_\_\_\_\_ Title: \_\_\_\_\_

Signature: \_\_\_\_\_ Date: \_\_\_\_\_

e-mail address: \_\_\_\_\_ Telephone: \_\_\_\_\_

**HOBBS OCD**

**JUL 24 2014**

**RECEIVED**

## **Distance to Groundwater**

**Figure 1, Figure 2, and the discussion presented in Appendix A demonstrates that groundwater (fresh water as defined by NMOCD Rules) at the location is greater than 50 feet beneath the temporary pit that will contain fluids that cannot be classified as “low-chloride.” Groundwater will be more than 50 feet below the bottom of the buried waste, meeting criteria for trench burial or in-place closure.**

Figure 1 is a geologic/ topographic map that shows:

1. The location of the staked well location (temporary pit) as a hexagon with the surface elevation.
2. The location of the Atoka Bank 3H (Misc 136), Mogi 9 State 1H (Misc-69), Brinninstool 4 State 3H (Misc-70), and Jackson Unit 15H (Misc-98) where we evaluated cuttings during the 120-foot casing borings.
3. Water wells from the OSE database as a blue triangle inside colored circles that indicate well depth. OSE wells are often miss-located in the WATERS database as older wells are plotted in the center of the quarter, quarter, quarter, of the Section Township and Range.
4. Water wells from the USGS database as large green triangles.
5. Water wells, which are not documented in the public databases but were identified by field inspection or other published reports as colored squares.
6. The depth-to-water from the most recent available measurement for each well is provided adjacent to the well symbol.

Figure 2 is an area topographic map that shows:

1. The location of the temporary pit as a hexagon.
2. Water wells measured by the USGS, the year of the measurement and the calculated elevation of the groundwater surface.
3. Isocontour lines displaying the elevation of the groundwater surface.

We relied upon the most recent data measured by the USGS to create the water table elevation map shown in Figure 2. While the “Misc” well data (see Figure 1) are generally measured water levels, this dataset contains errors (generally of location) that are not often present in the USGS data. Water level data from the OSE database rely upon observed water levels by drillers during the completion of the water well. The OSE dataset provides some useful data in certain areas. The Bell Lake area contains sufficient high-quality data that we did not rely on OSE data.

For the potentiometric surface map (Figure 2), we honored all data that we know are accurate to the best of our knowledge. For example, data from the Atoka Bank 3H rathole (Misc. 136), Jackson Unit 15H rathole (Misc-98), the Mogi 9 State 1H rathole (Misc-69) and the Brinninstool 4 State 3H rathole (Misc-70) are lithologic data logged by Hicks Consultants during drilling – the cuttings were dust/dry at a depth of 120 feet. While the borings terminated above the regional aquifer, they provide data that are useful for the mapping. It is these data that help define the horizontal limits of water bodies that are perched within the Bell Lake Sink and similar depressions.

In addition to the perched water within certain closed depressions, some wells in the area are completed in the lowest permeable unit of the Chinle/Dockum aquifer: the Santa Rosa

Siting Criteria (19.15.17.10 NMAC)  
Yates Petroleum Corp – Trucker BRK State 2H

Sandstone. We are relatively sure that Misc.-15 at the Brinninstool Ranch Headquarters is one such well. Water levels in other Chinle/Dockum wells shown on Figure 2 are 300 feet or more higher in elevation and obviously tap permeable units higher in the stratigraphic column of the relatively thick Chinle/Dockum. The USGS identified another well in the Santa Rosa Aquifer in Section 3 T23S R32E, which, like the Brinninstool Headquarters well, shows a relatively low groundwater elevation.

From these data and the discussion in Appendix A, we conclude:

- Based upon the groundwater map of the regional aquifer (permeable units in the upper Chinle/Dockum), the elevation of the groundwater surface beneath the proposed pit may be as high as 3,540 feet above mean sea level but is probably no higher than 3520 feet asl.
- Based upon the rathole borings south, southwest and northwest of the Bell Lake Sink area, we believe that groundwater beneath this location will be greater than 100 feet below surface.
- The perched, shallow groundwater zones present within the Bell Lake Sink and Cotton Place (see Appendix A) do not extend to the area beneath the proposed pit.
- The *minimum* distance between the bottom of a 10-foot deep temporary pit and the potentiometric surface of the regional aquifer is approximately  $(3,606 - 10 - 3540) = 56$  feet.

In order to provide a high level of certainty regarding the depth to groundwater at this location, a geologist will log the rathole cuttings from the auger rig to identify any water-bearing units. We will report the findings to OCD. If the site-specific data demonstrate that the distance between the bottom of the pit and groundwater is greater than 100 feet, we will propose to employ the more accurate burial standards.

### Distance to Surface Water

**Figure 3 and the site visit demonstrates that the location is not within 300 feet of a continuously flowing watercourse or any other significant watercourse or 200 feet from lakebed, sinkhole, or playa lake (measured from the ordinary high-water mark). This temporary pit will also qualify for burial trench or in-place closure as the location is not within 100 feet of a continuously flowing watercourse, or 200 feet of any other significant watercourse or lakebed, sinkhole or playa lake (measured from the ordinary high-water mark).**

- No continuously flowing watercourses or other water bodies, as defined by NMOCD Rules, exist within the prescribed setback criteria for the pit or in-place closure of a temporary pit at this location.
- The nearest topographic low area is the Bell Lake Sink located north of the proposed pit. Neither Bell Lake nor the smaller surface water body shown east of Bell Lake contained surface water on the day of the inspection. Google Earth images suggest the excavated areas south of the lakebed contained water periodically from 1996 to 2012 (also see Figure 4). No identified surface water bodies in the Bell Lake area exhibited evidence of surface water during this period.
- The Bell Lake Sink is an ancient collapse feature but is not considered a sinkhole as typically used in NMOCD Rules.

Siting Criteria (19.15.17.10 NMAC)  
Yates Petroleum Corp – Trucker BRK State 2H

- We examined Jog Tank, about one mile east-northeast of the proposed temporary pit. This closed depression exhibited no evidence of collapse features or unstable ground.

### **Distance to Permanent Residence or Structures**

**Figure 4 and the site visit demonstrates that the location is not within 300 feet from an occupied permanent residence, school, hospital, institution, church, or other structure in existence at the time of initial application. This also qualifies the location for burial trench or in-place closure.**

- The nearest structures are oil and gas wells and tank batteries.
- A cattle gathering area with corrals is located about 1 mile west of the proposed pit.

### **Distance to Non-Public Water Supply**

**Figures 1 and Figure 2 demonstrates that the location is not within 500 horizontal feet of a private, domestic fresh water well or spring that less than five households use for domestic or stock watering purposes, or within 1,000 horizontal feet of any other fresh water well or spring, in existence at the time of initial application. Additionally, this location is also not within 300 feet of a spring or private, domestic fresh water well used for domestic or stock watering purposes, thus qualifying for burial trench or in-place closure.**

- Figure 1 shows the locations of all area water wells, active or plugged.
- The nearest active water wells are located approximately 2 miles southwest or 2 miles northwest.
- There are no known domestic water wells located within 1,000 feet of the proposed pit.
- No springs were identified within the mapping area (see Figure 3).

### **Distance to Municipal Boundaries and Fresh Water Fields**

**Figure 5 demonstrates that the location is not within incorporated municipal boundaries or within defined municipal fresh water well fields covered under a municipal ordinance adopted pursuant to NMSA 1978, Section 3-27-3, as amended. This also qualifies the location for burial trench or in-place closure.**

- The closest municipality is Jal, NM approximately 28 miles to the southeast.
- The closest public well field is located approximately 50 miles to the west and/or 50 miles north.

### **Distance to Wetlands**

**Figure 6 demonstrates the location is not within 300 feet of wetlands. This also qualifies the location for burial trench or in-place closure.**

- The nearest designated wetlands are a “freshwater emergent wetland” located approximately 1 mile to the east (Jog Tank)
- A freshwater pond is located about 1 mile west.

### **Distance to Subsurface Mines**

**Figure 7 and our general reconnaissance of the area demonstrate that the nearest mines are caliche pits. This location is not within an area overlying a subsurface mine.**

- The nearest mapped caliche pit is located approximately 1.25 miles to the southeast.

### **Distance to High or Critical Karst Areas**

**Figure 8 shows the location of the temporary pits with respect to BLM Karst areas.**

- The proposed temporary pit is located within a “low” potential karst area.
- The nearest “high” or “critical” potential karst area is located approximately 18 miles west of the site.
- No evidence of solution voids were observed near the site during the field inspection.
- No evidence of unstable ground was observed in Bell Lake Sink.

### **Distance to 100-Year Floodplain**

**Figure 9 demonstrates that the location is within Zone D as designated by the Federal Emergency Management Agency with respect to the Flood Insurance Rate 100-Year Floodplain.**

- Zone D is described as areas with possible but undetermined flood hazards. No flood hazard analysis has been conducted.
- Our field inspection and examination of the topography permits a conclusion that the location is not within any floodplain and has low risk for flooding.

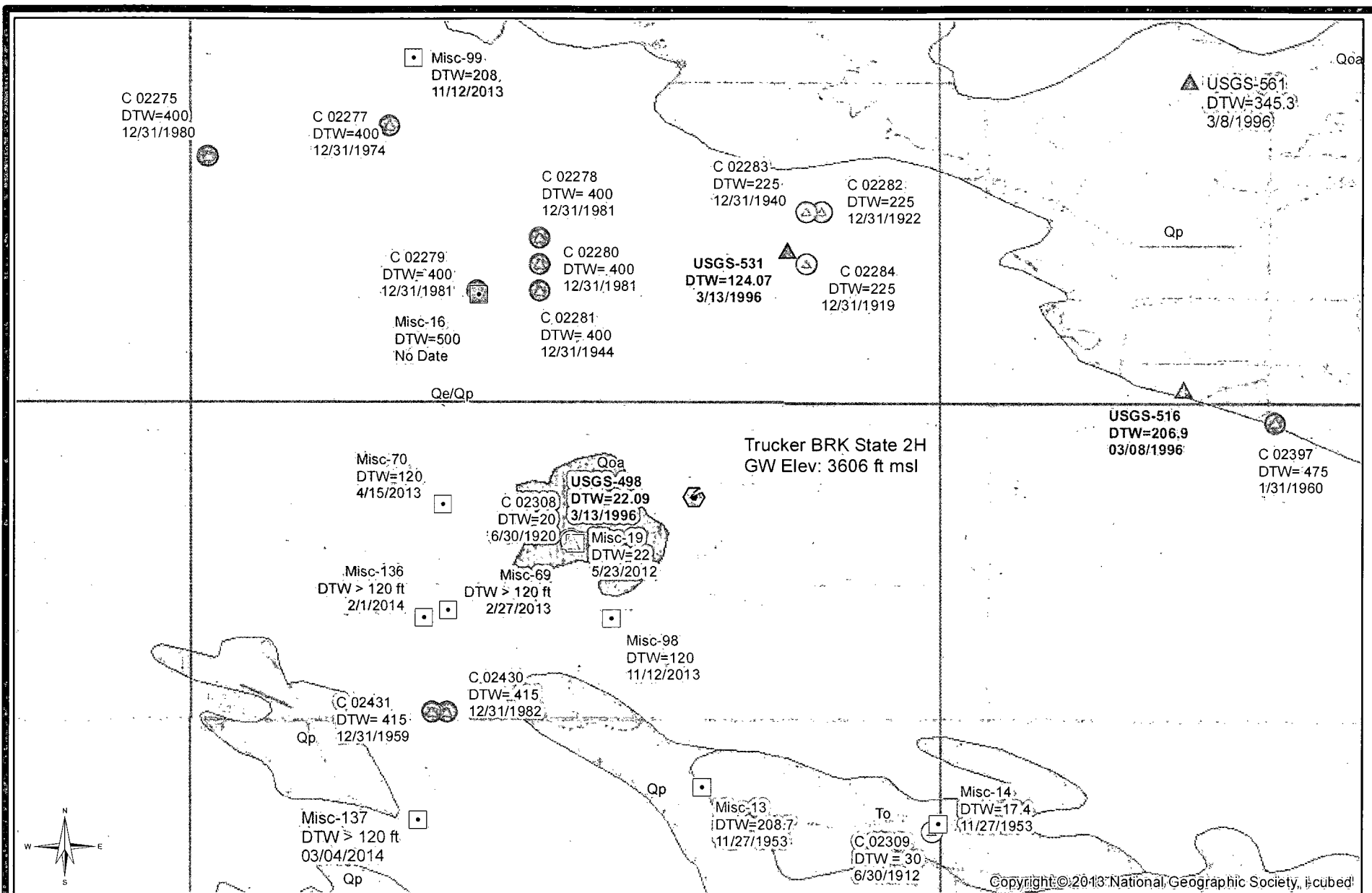
### **Temporary Pit Design**

Please refer to Plates 1 and 2 for the design of the temporary pit and the Design and Construction Plan at the end of this application.

# **Site Specific Information Figures**

**R.T. Hicks Consultants, Ltd.**

901 Rio Grande Blvd. NW, Suite F-142  
Albuquerque, NM 87104



0 1 2  
Miles

R.T. Hicks Consultants, Ltd  
901 Rio Grande Blvd NW Suite F-142  
Albuquerque, NM 87104  
Ph: 505.266.5004

Depth To Water and Geology

Yates Petroleum  
Trucker BRK State 2H

Figure 1

July 2014



# Legend



Pit Location

## USGS Gauging Station (Well ID, DTW, Date)

### Aquifer Code, Well Status



Ogallala



Chinle



Santa Rosa

## Misc. Water Wells (Well ID, DTW, Date)

### Well Depth (ft)



No Data



<=150



151 - 350



>500

## OSE Water Wells (Well ID, DTW, Date)

### Well Depth (ft)



<= 150



151 - 350



501 - 1000

## NM Geology

### Map Unit, Description



Qe/Qp, Quaternary-Eolian Piedmont Deposits



Qoa, Quaternary-Older Alluvial Deposits



Qp, Quaternary-Piedmont Alluvial Deposits



To, Tertiary-Ogallala Formation

R.T. Hicks Consultants, Ltd

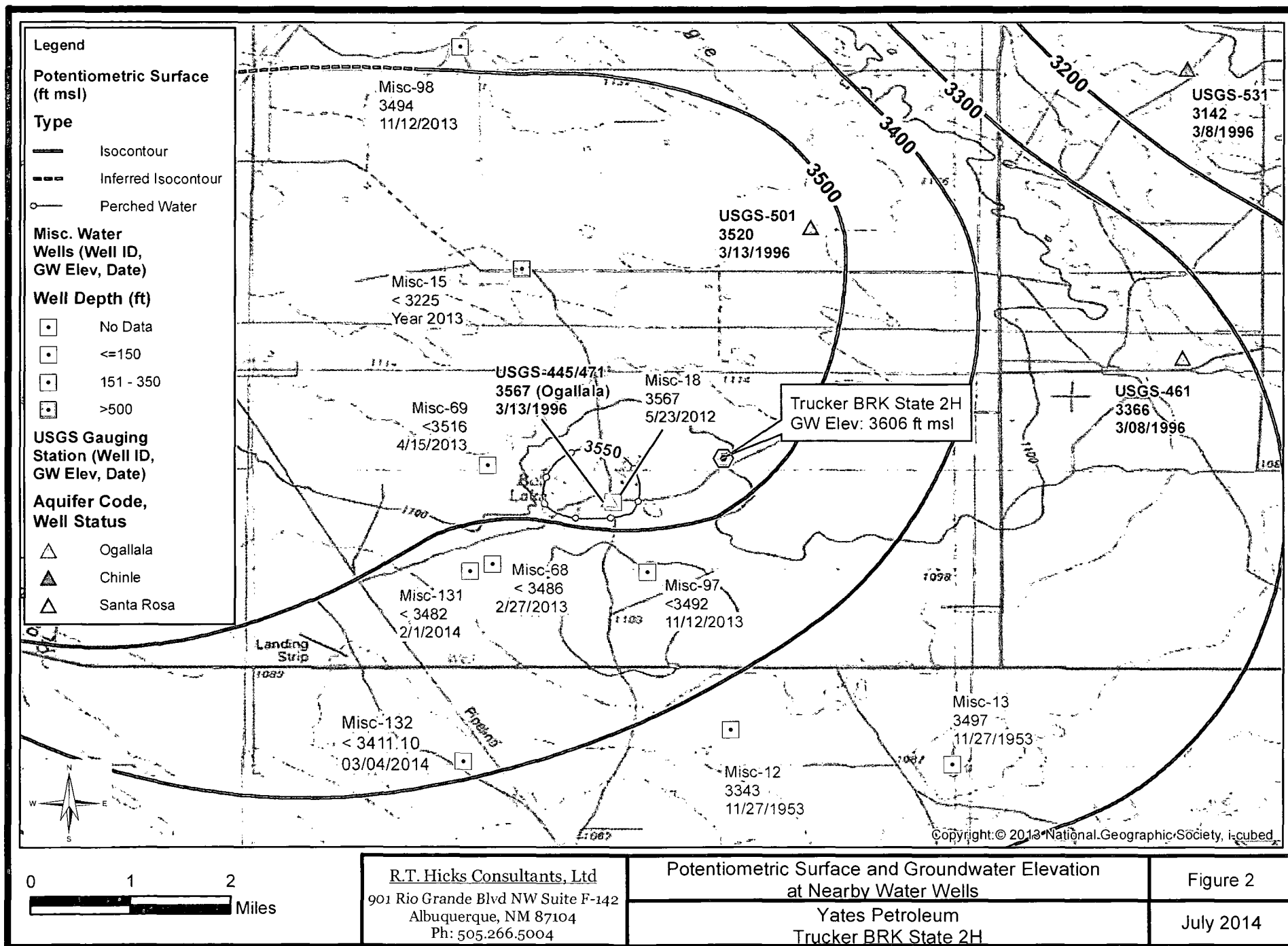
901 Rio Grande Blvd NW Suite F-142  
Albuquerque, NM 87104  
Ph: 505.266.5004

Figure 1 Legend

Yates Petroleum  
Trucker BRK State 2H

Figure 1 Legend

July 2014



R.T. Hicks Consultants, Ltd

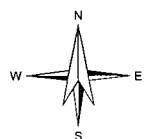
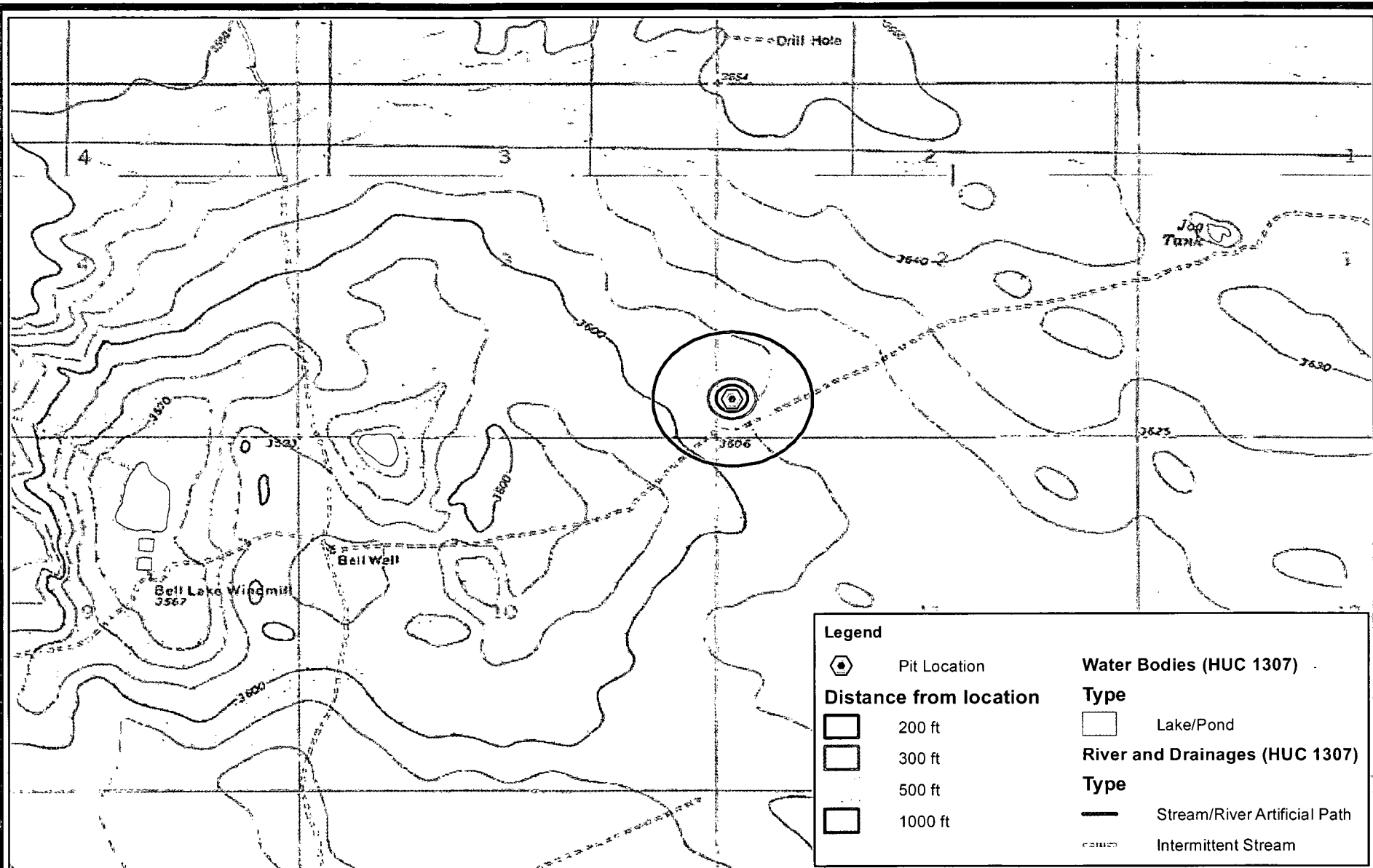
901 Rio Grande Blvd NW Suite F-142  
Albuquerque, NM 87104  
Ph: 505.266.5004

Potentiometric Surface and Groundwater Elevation  
at Nearby Water Wells

Yates Petroleum  
Trucker BRK State 2H

Figure 2

July 2014



0 1,000 2,000  
Feet

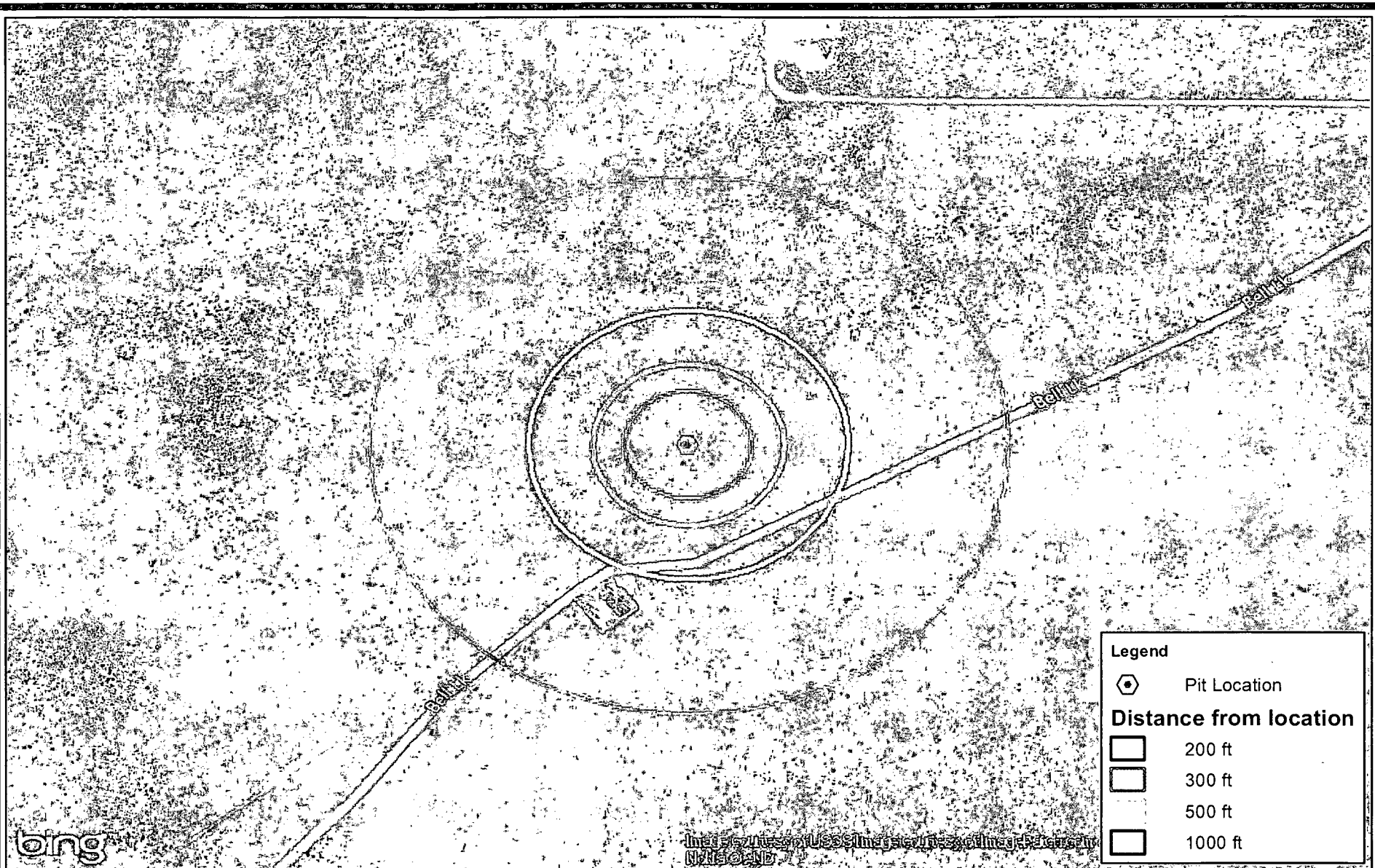
R.T. Hicks Consultants, Ltd  
901 Rio Grande Blvd NW Suite F-142  
Albuquerque, NM 87104  
Ph: 505.266.5004

Surface Water and Topography

Yates Petroleum  
Trucker BRK State 2H

Figure 3

July 2014



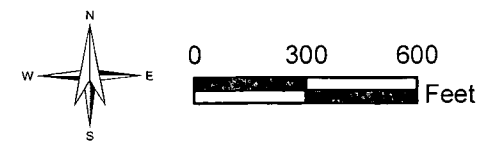
**Legend**

Pit Location

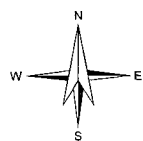
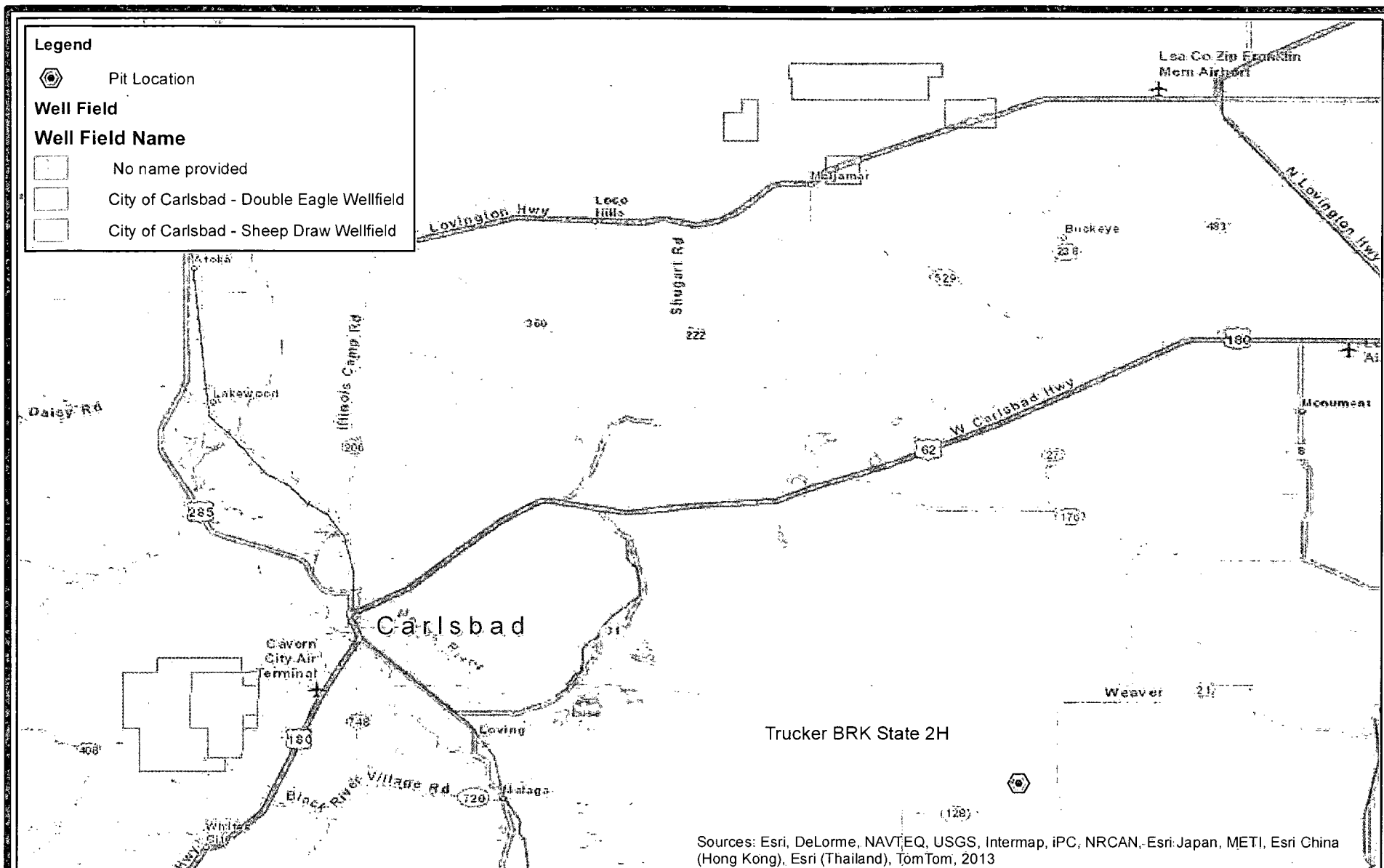
**Distance from location**

200 ft  
 300 ft  
 500 ft  
 1000 ft

(aerial image c.2014)



R.T. Hicks Consultants, Ltd 901 Rio Grande Blvd NW Suite F-142 Albuquerque, NM 87104 Ph: 505.266.5004	Nearby Structures	Figure 4
	Yates Petroleum Trucker BRK State 2H	July 2014



0 5 10  
Miles

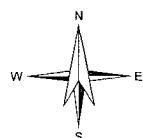
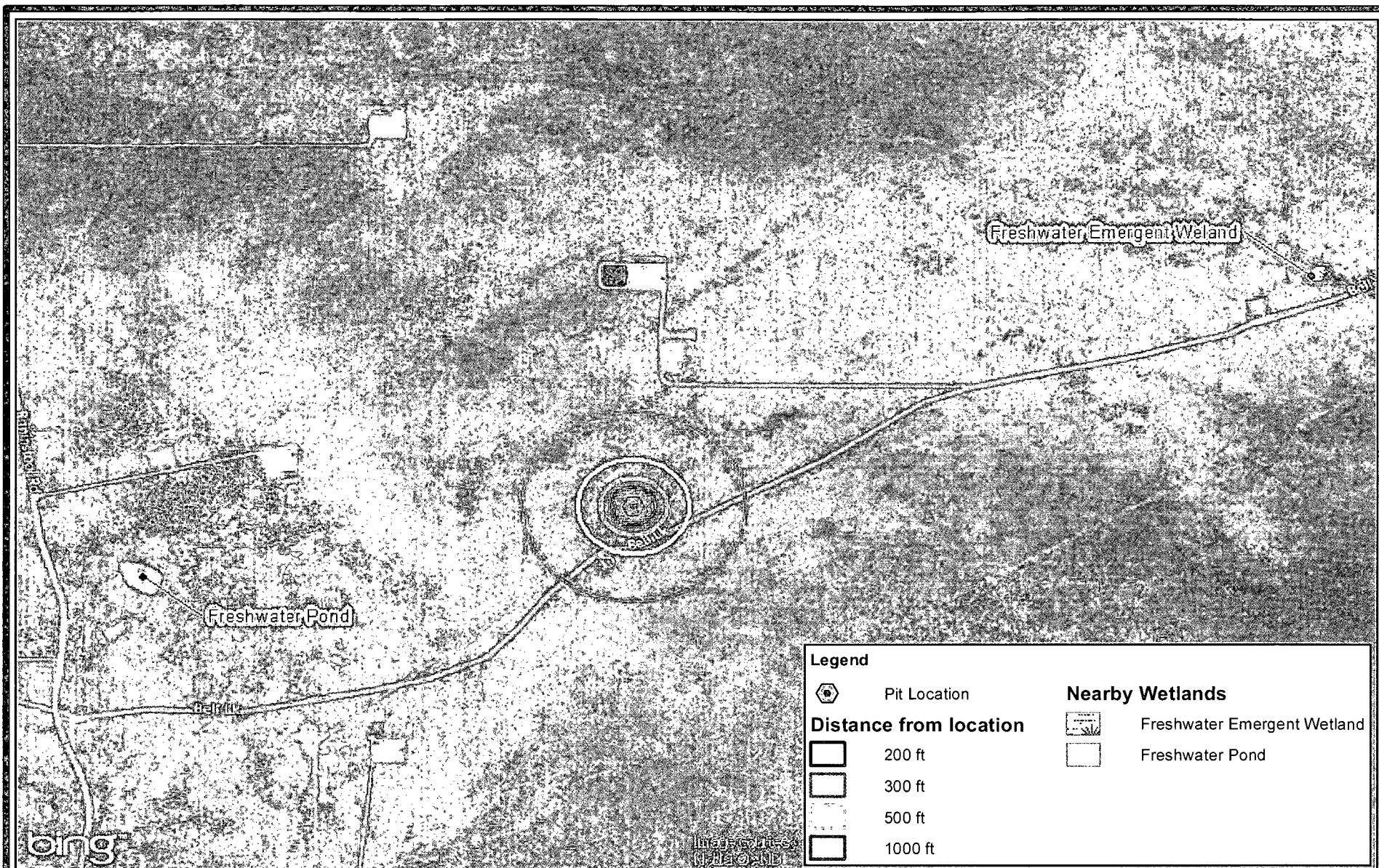
R.T. Hicks Consultants, Ltd  
901 Rio Grande Blvd NW Suite F-142  
Albuquerque, NM 87104  
Ph: 505.266.5004

Nearby Municipalities and Well Fields

Yates Petroleum  
Trucker BRK State 2H

Figure 5

July 2014



0 1,000 2,000  
Feet

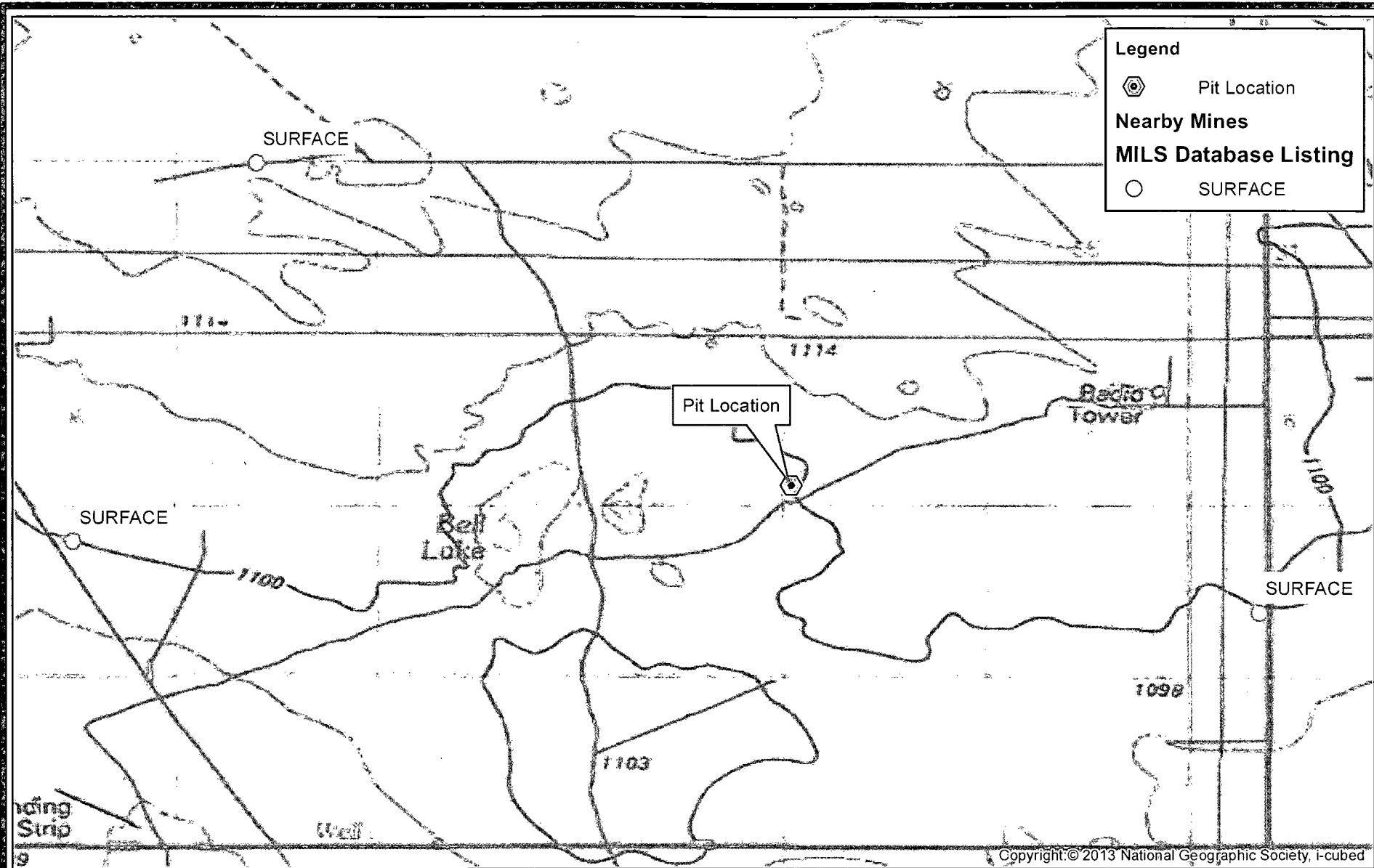
R.T. Hicks Consultants, Ltd  
901 Rio Grande Blvd NW Suite F-142  
Albuquerque, NM 87104  
Ph: 505.266.5004

Nearby Wetlands



Yates Petroleum  
Trucker BRK State 2H

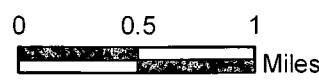
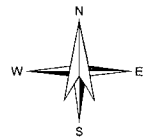
Figure 6

July 2014



**Legend**

 Pit Location  
**Nearby Mines**  
**MILS Database Listing**  
 SURFACE



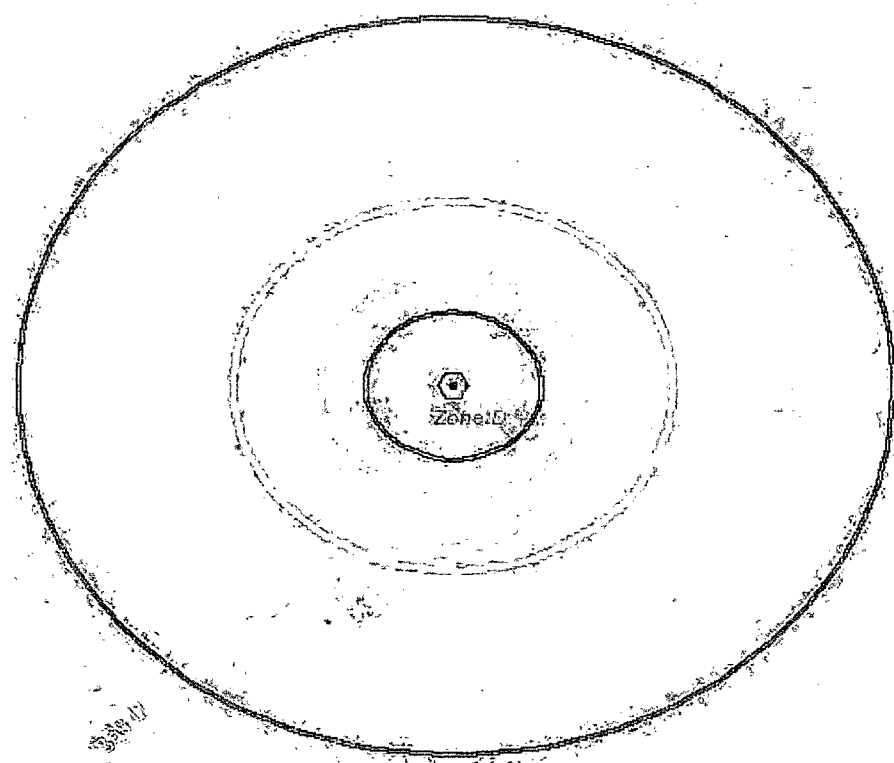
<p><u>R.T. Hicks Consultants, Ltd</u>          901 Rio Grande Blvd NW Suite F-142          Albuquerque, NM 87104          Ph: 505.266.5004</p>	<p>Nearby Mines and Minerals</p> <p>Yates Petroleum          Trucker BRK State 2H</p>	<p>Figure 7</p> <p>July 2014</p>
--	---	----------------------------------

Copyright © 2013 National Geographic Society, i-cubed









**Legend**


 Pit Location

**Distance from location**

 200 ft

 300 ft

 500 ft

 1000 ft

**National Flood Hazard Layer**


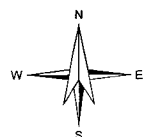
 Area with possible but undetermined flood hazard. No flood hazard has been conducted. (Zone D)

Image courtesy of USGS Image courtesy of ImagePatch.com © 2014 Microsoft Corporation © 2014 Nokia © AND



0 300 600  
Feet

FEMA Source: <https://hazards.fema.gov/gis/nfhl/services/public/NFHLWMS/MapServer/WMSServer>

R.T. Hicks Consultants, Ltd

901 Rio Grande Blvd NW Suite F-142  
Albuquerque, NM 87104  
Ph: 505.266.5004

FEMA Flood Map

Yates Petroleum  
Trucker BRK State 2H

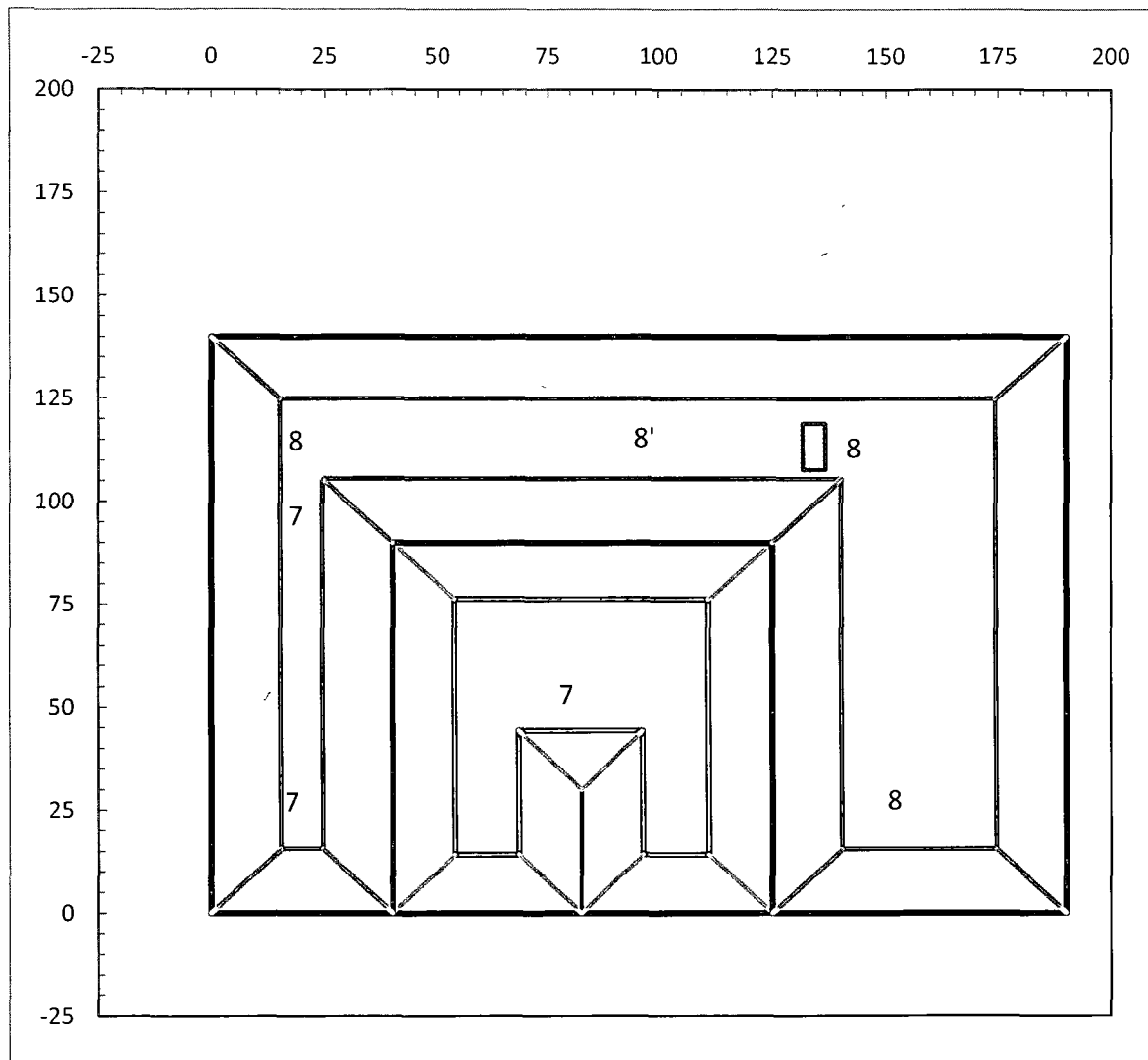
Figure 9

July 2014

# **Site Specific Information Plates**

**R.T. Hicks Consultants, Ltd.**

901 Rio Grande Blvd. NW, Suite F-142  
Albuquerque, NM 87104



Inner Horseshoe Capacity 6285 bbl  
Outer Horseshoe Capacity 17938 bbl

Fluid Cell Capacity 0 bbl  
Total Capacity 24223 bbl

#### Drilling Cell Dimensions

Drilling Cell Total Width	190.0
Drilling Cell Total Length	140.0

Slopes of Pit Horizontal Distance	2.00
Slopes of Pit Vertical Distance	1.00
Horseshoe divider width at surface	0.0

#### Inner Horseshoe Dimensions

Total Width (left right)	85.0
Total Length (up down)	90.0
Depth	7.0
Length of Divider	30.0
Divider Width	0.0
Width of discharge floor	14.5
Width of suction floor	14.5

#### Outer Horseshoe Dimensions

Width Discharge Side	65.0
Width Suction Side	40.0
Length Far Side (up down)	50.0
Width of discharge Floor	33.0
Width of Suction Floor	12.0
Width of Far Side Floor (right-left dimension)	108.0
Length of far side floor (Up-down dimension)	18.0
Depth of Discharge Side	8.0
Depth of Far Side	8.0
Depth of Suction Side	7.0



2-foot speed bump

North



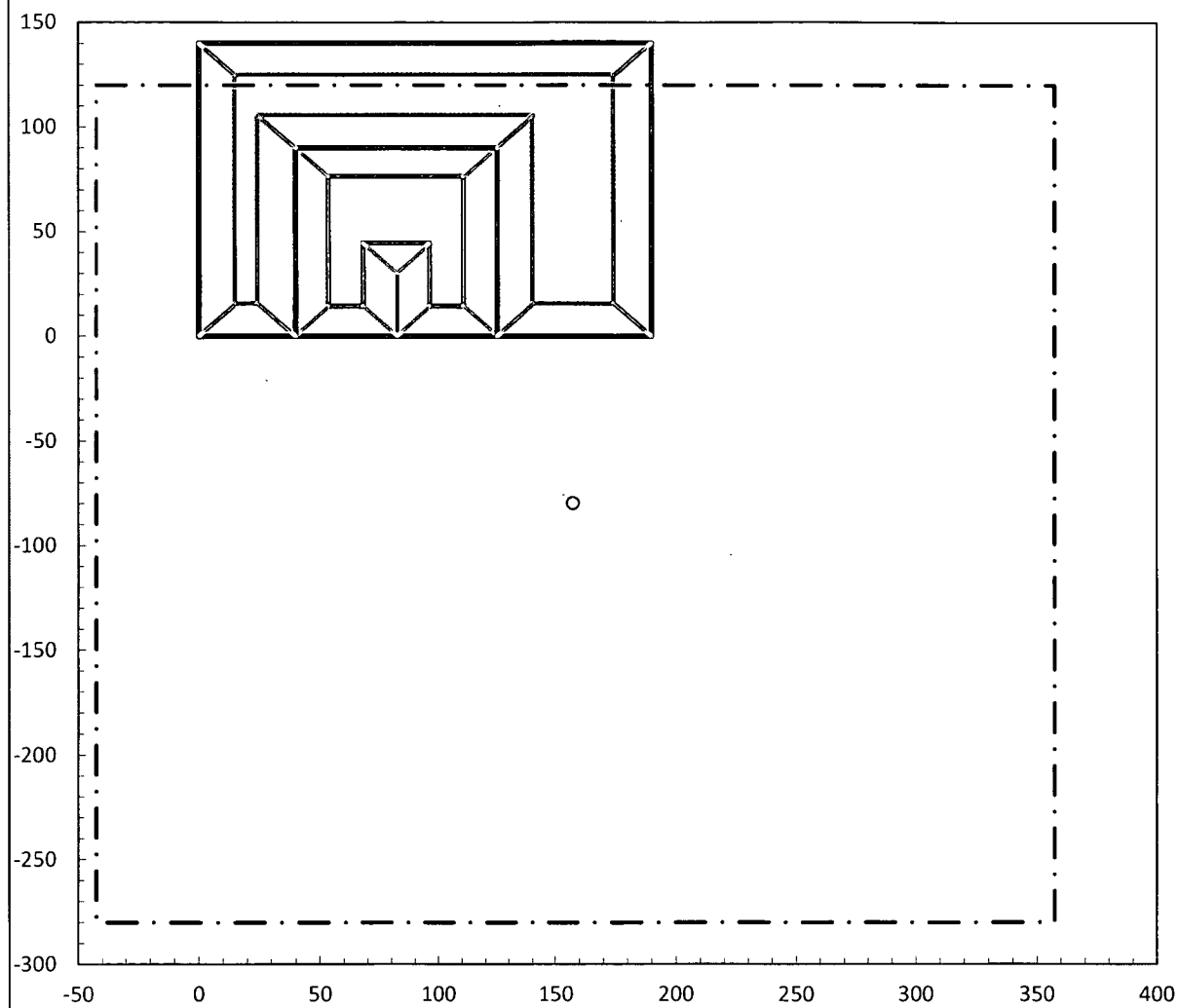
R.T. Hicks Consultants  
901 Rio Grande Blvd. NW  
Suite F-142  
Albuquerque, N. M. 87104

Drawing of Drilling Cell  
Bottom of Cell Not to Scale

YPD - Trucker BRK State 2H

Plate 1

July 2014



Well (red) to in suction/out suction 117.50  
 Well to in discharge/out discharge 32.50

North



**R.T. Hicks Consultants**  
 901 Rio Grande Blvd. NW  
 Suite F-142  
 Albuquerque, N. M. 87104

**Drawing of Temporary Pit and Well in Relation to Pad Boundary**

**Plate 2**

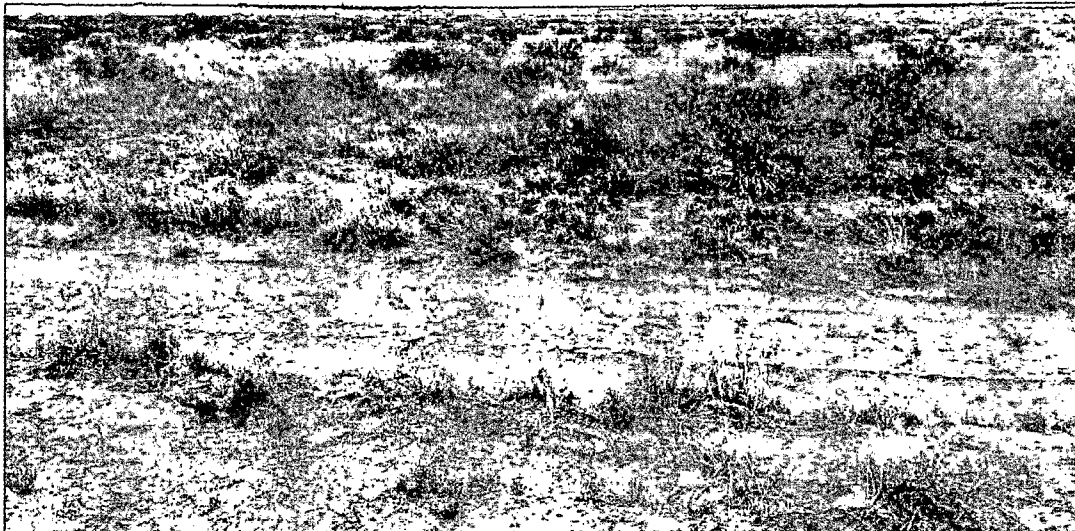
**YPD - Trucker BRK State 2H**

**July 2014**

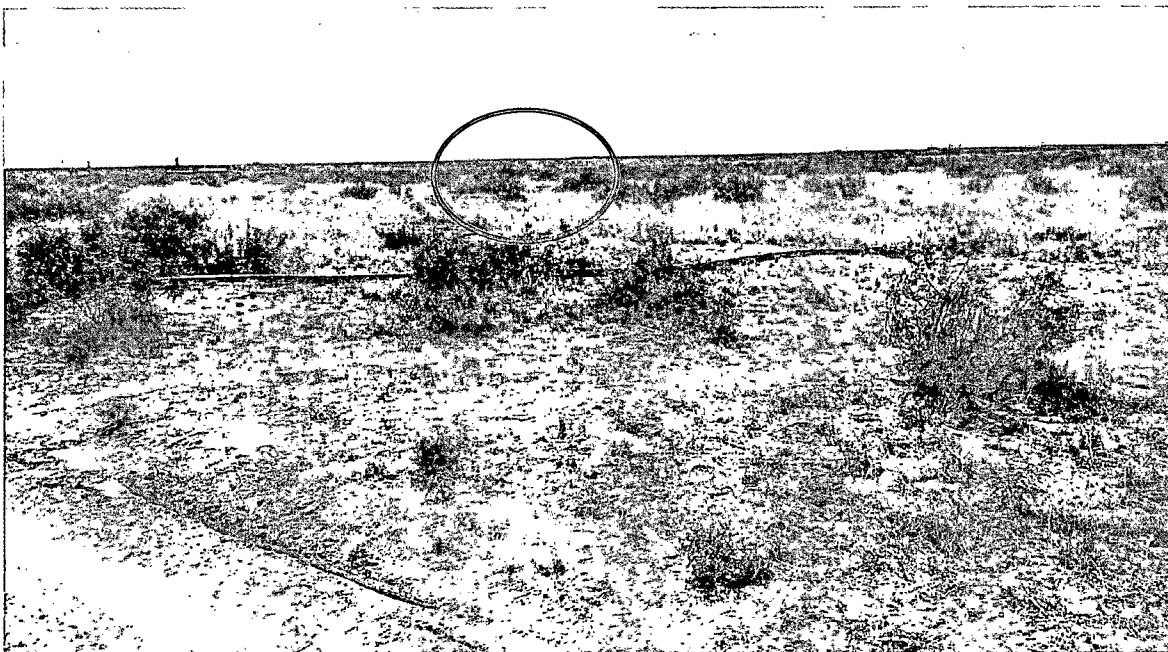
# **Site Inspection Photographs**

**R.T. Hicks Consultants, Ltd.**

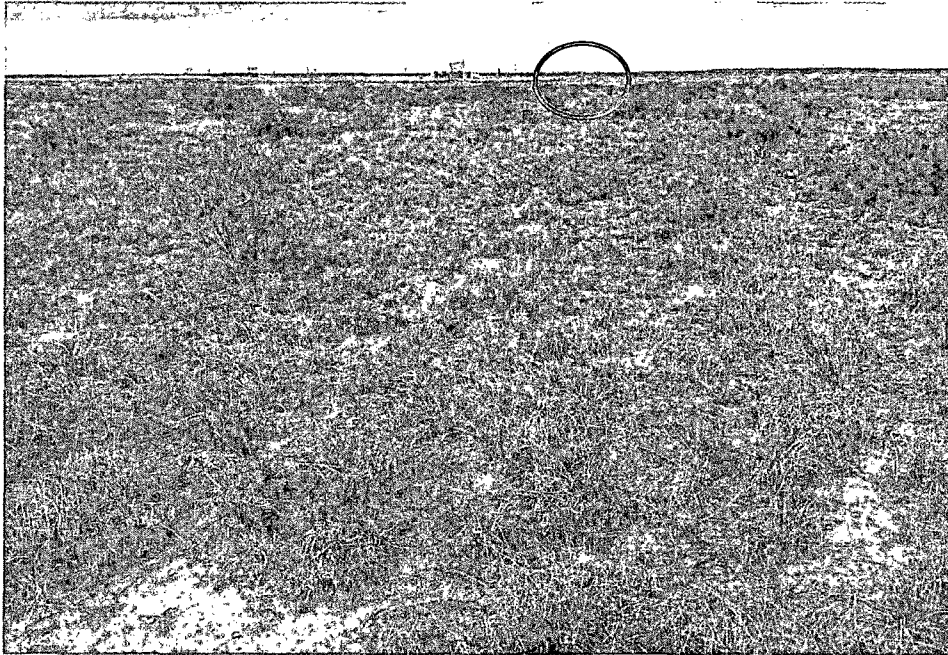
901 Rio Grande Blvd. NW, Suite F-142  
Albuquerque, NM 87104



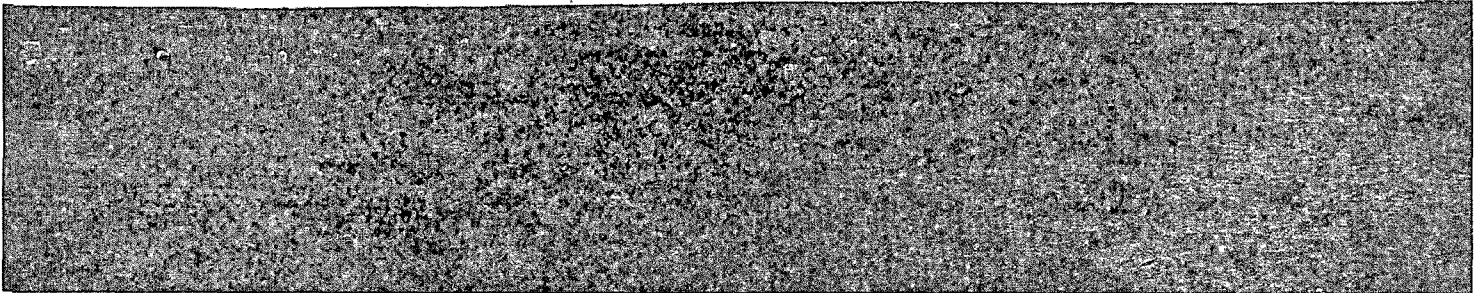
View west to staked location. The location flag is about 250 feet in distance, between camera and truck.



View southwest from a distance of about 300 feet from staked location. Red circle shows staked location flag.



View north from about 250 feet from staked location. Red circle is location stake. Pit will lie about 80 feet north of well stake.



View north from road of Jog Tank, located east of Trucker 2H well. We carefully examined this closed depression for evidence of unstable ground. Where unstable ground exists, ponded water can typically cause a collapse. Thus, closed depressions are excellent areas to conduct a foot survey to determine if the ground in the area of a proposed pit could be "unstable".

**Survey Information**  
**Trucker BRK State 2H**

**R.T. Hicks Consultants, Ltd.**

901 Rio Grande Blvd. NW, Suite F-142  
Albuquerque, NM 87104



DISTRICT I  
1825 N. French Dr., Hobbs, NM 88240  
Phone (575) 393-6161 Fax: (575) 393-0720

DISTRICT II  
811 S. First St., Artesia, NM 88210  
Phone (575) 748-1283 Fax: (575) 748-9720

DISTRICT III  
1000 Rio Brazos Rd., Aztec, NM 87410  
Phone (505) 334-6178 Fax: (505) 334-6170

DISTRICT IV  
1220 S. St. Francis Dr., Santa Fe, NM 87505  
Phone (505) 476-3460 Fax: (505) 476-3462

State of New Mexico  
Energy, Minerals and Natural Resources Department

OIL CONSERVATION DIVISION  
1220 South St. Francis Dr.  
Santa Fe, New Mexico 87505

Form C-102

Revised August 1, 2011

Submit one copy to appropriate  
District Office

WELL LOCATION AND ACREAGE DEDICATION PLAT

☐ AMENDED REPORT

API Number	Pool Code	Pool Name
Property Code	Property Name TRUCKER BRK STATE	Well Number 2H
OGRID No. 025575	Operator Name YATES PETROLEUM CORPORATION	Elevation 3606

Surface Location

UL or lot No.	Section	Township	Range	Lot Idn	Feet from the	North/South line	Feet from the	East/West line	County
M	2	24 S	33 E		575	SOUTH	200	WEST	LEA

Bottom Hole Location If Different From Surface

UL or lot No.	Section	Township	Range	Lot Idn	Feet from the	North/South line	Feet from the	East/West line	County
P	2	24 S	33 E		400	SOUTH	230	EAST	LEA
Dedicated Acres	Joint or Infill	Consolidation Code	Order No.						

NO ALLOWABLE WILL BE ASSIGNED TO THIS COMPLETION UNTIL ALL INTERESTS HAVE BEEN CONSOLIDATED  
OR A NON-STANDARD UNIT HAS BEEN APPROVED BY THE DIVISION

N: 456975.9 E: 782979.3 (NAD-83)		N: 456992.8 E: 785617.6 (NAD-83)		N: 457008.2 E: 788255.8 (NAD-83)
<div><div><p><b>SURFACE LOCATION</b> Lat - N 32°14'27.25" Long - W 103°33'03.58" NMSPCE- N 452255.0 E 783219.8 (NAD-83)</p></div><div><p><b>PROPOSED BOTTOM HOLE LOCATION</b> Lat - N 32°14'25.77" Long - W 103°32'07.33" NMSPCE- N 452141.0 E 788052.2 (NAD-83)</p></div></div>				
N: 453002.2 E: 783013.5 (NAD-83)	N: 453017.6 E: 784329.4 (NAD-83)	N: 453048.3 E: 786961.3 (NAD-83)	N: 453063.7 E: 788277.1 (NAD-83)	
N: 451677.6 E: 783024.9 (NAD-83)		N: 451744.0 E: 788284.4 (NAD-83)		
<div><div><p>200' S.L.</p></div><div><p>B.H. 230' 400'</p></div></div>				
<div><div><p>0' 500' 1000' 1500' 2000'</p></div><div><p>SCALE: 1" = 1000'</p></div><div><p>WO Num.: 30549</p></div></div>				

**OPERATOR CERTIFICATION**

I hereby certify that the information contained herein is true and complete to the best of my knowledge and belief, and that this organization either owns a working interest or unLEASED mineral interest in the land including the proposed bottom hole location or has a right to drill this well at this location pursuant to a contract with an owner of such a mineral or working interest, or to a voluntary pooling agreement or a compulsory pooling order heretofore entered by the division.

Signature \_\_\_\_\_ Date \_\_\_\_\_

Printed Name \_\_\_\_\_

Email Address \_\_\_\_\_

**SURVEYOR CERTIFICATION**

I hereby certify that the well location shown on this plat was plotted from field notes of actual surveys made by me or under my supervision, and that the same is true and correct to the best of my belief.

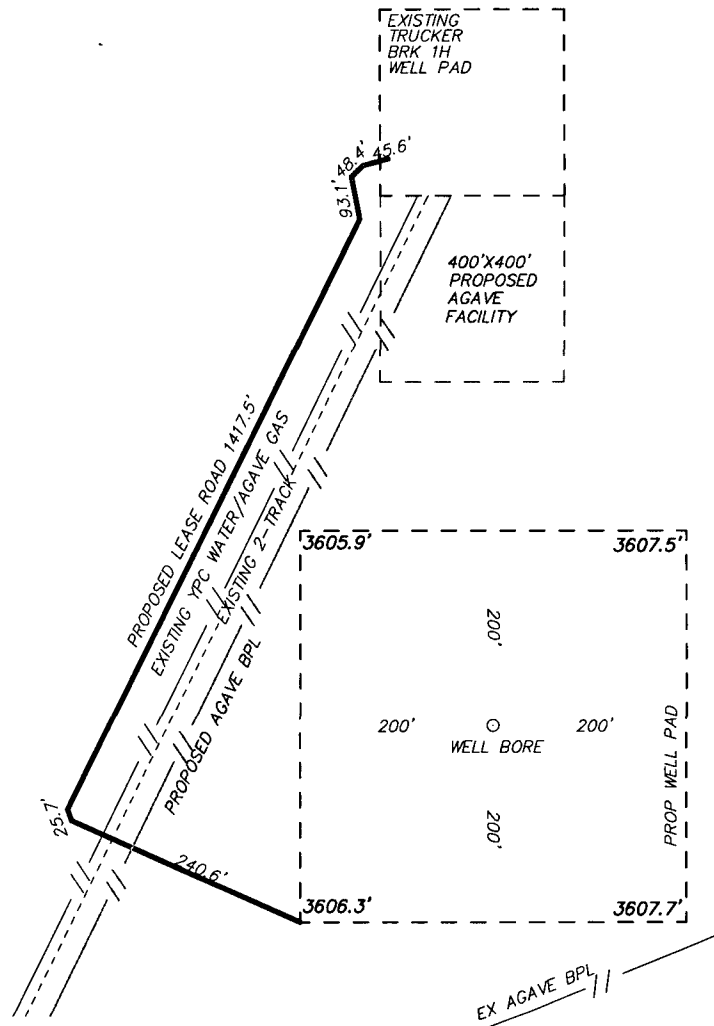
Date Surveyed \_\_\_\_\_

Signature \_\_\_\_\_ of Professional Surveyor

Certificate No. 7977

Basin Surveyor

Section 2, Township 24 South, Range 33 East, N.M.P.M.,  
LEA COUNTY, NEW MEXICO.



YATES PETROLEUM CORPORATION  
TRUCKER BRK STATE #2H  
ELEV. - 3606'

Lat - N 32°14'27.25"  
Long - W 103°33'03.58"  
NMSPCE- N 452255.0  
E 783219.8  
(NAD-83)

Directions to Location:

FROM DELAWARE BASIN/BELL LAKE ROAD GO WEST  
2.3 MILES, THEN 0.28 MILES TO PROPOSED  
LOCATION.

JAL, NM IS ±22 MILES TO THE SOUTHEAST OF LOCATION.

200 0 200 400 FEET  
SCALE: 1" = 200'



YATES PETROLEUM  
CORPORATION

REF: TRUCKER BRK STATE #2H / WELL PAD TOPO

THE TRUCKER BRK STATE #2H LOCATED 575' FROM  
THE SOUTH LINE AND 200' FROM THE WEST LINE OF  
SECTION 2, TOWNSHIP 24 SOUTH, RANGE 33 EAST.

N.M.P.M., LEA COUNTY, NEW MEXICO.

**basin**  
**surveys**

focused on excellence  
in the oilfield

P.O. Box 1786

1120 N. West County Rd.  
Hobbs, New Mexico 88241

(575) 393-7316 - Office

(575) 392-2206 - Fax  
basinsurveys.com

W.O. Number: 30549

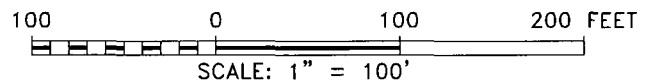
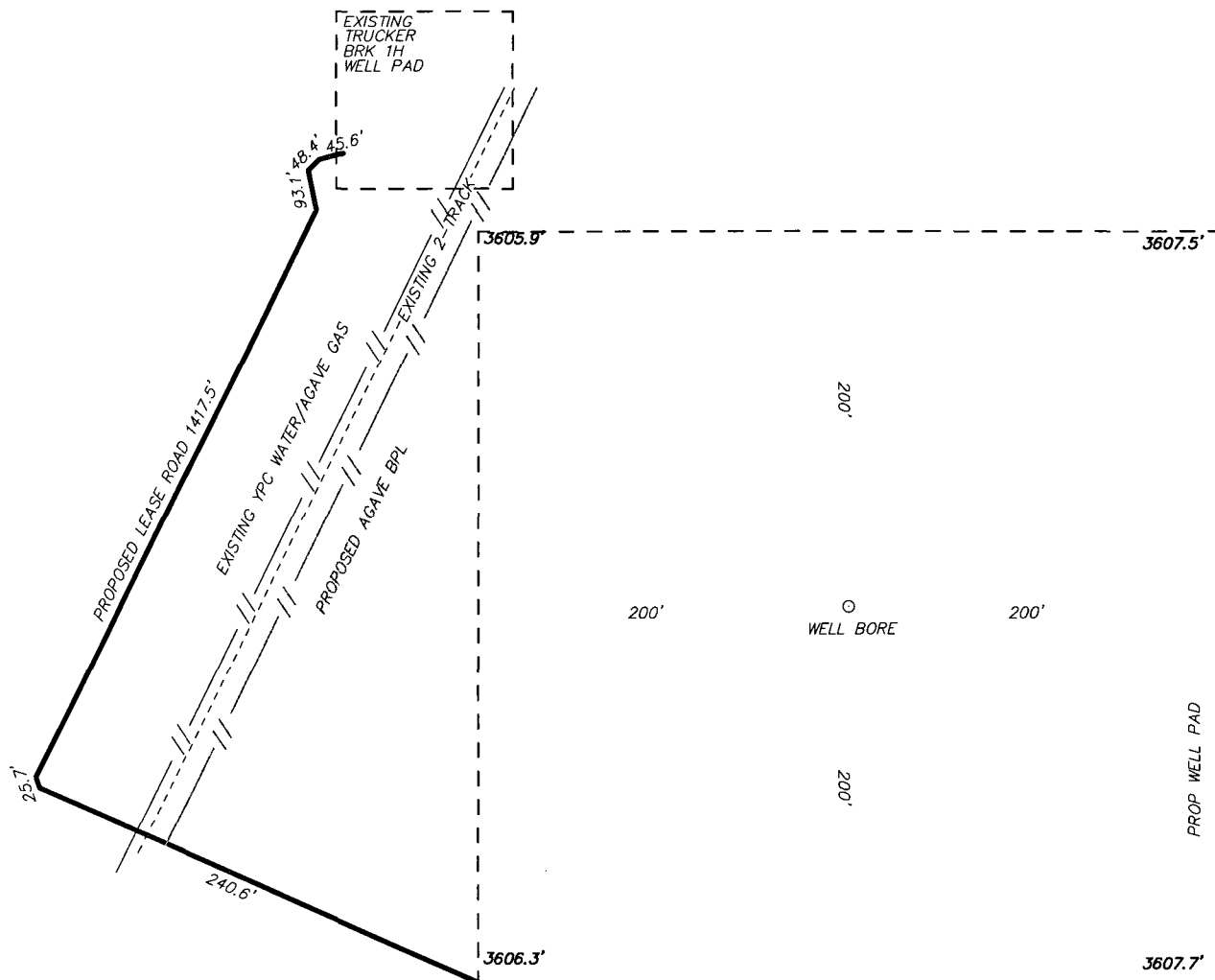
Drawn By: K. NORRIS

Date: 07-03-2014

Survey Date: 07-02-2014

Sheet 1 of 1 Sheets

Section 2, Township 24 South, Range 33 East, N.M.P.M.,  
LEA COUNTY, NEW MEXICO.



**YATES** PETROLEUM CORPORATION

REF: TRUCKER BRK STATE #2H / WELL PAD TOPO

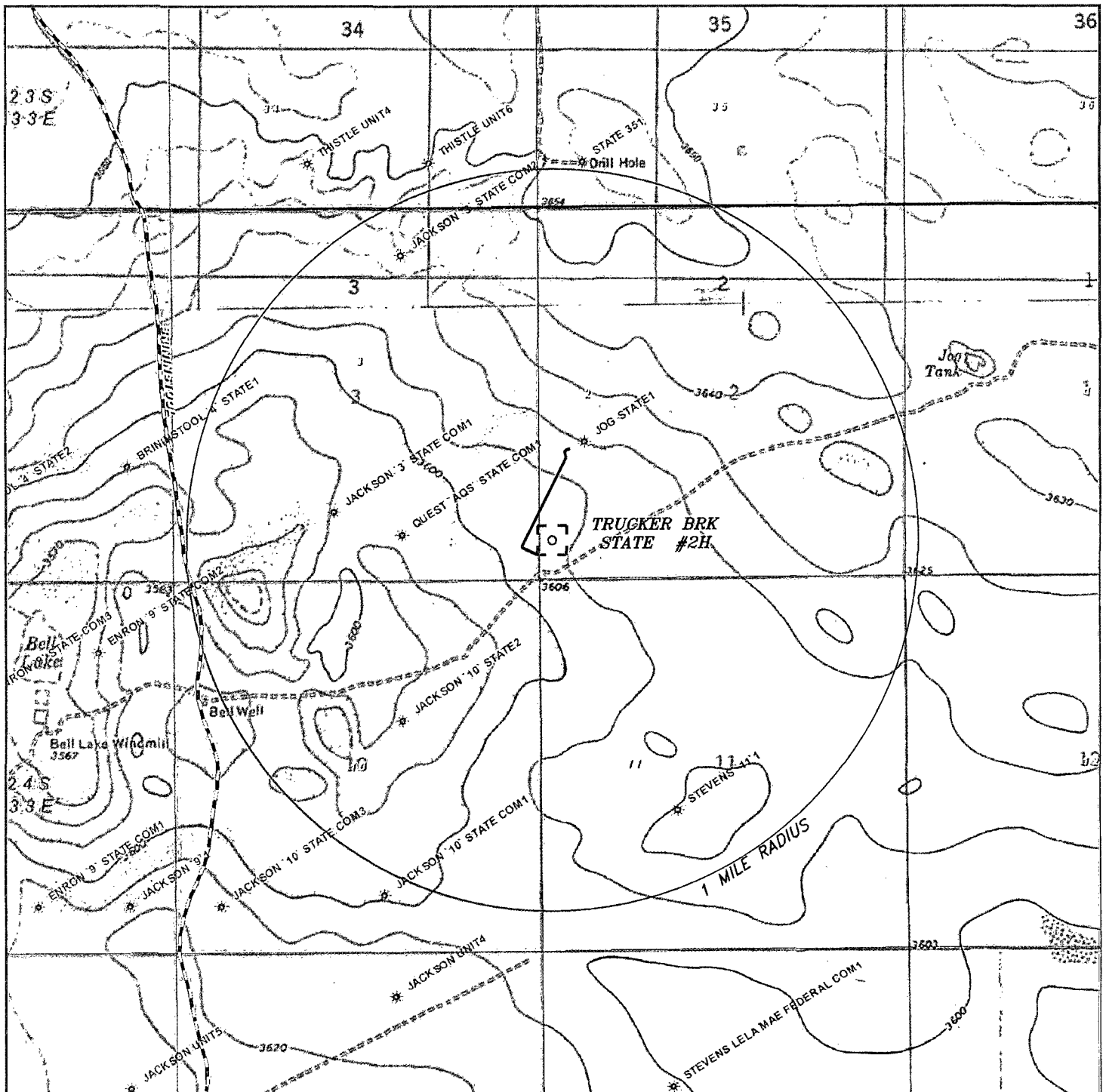
THE TRUCKER BRK STATE #2H LOCATED 575' FROM  
THE SOUTH LINE AND 200' FROM THE WEST LINE OF  
SECTION 2, TOWNSHIP 24 SOUTH, RANGE 33 EAST.

N.M.P.M., LEA COUNTY, NEW MEXICO.

**basin**  
**surveys**  
focused on excellence  
in the oilfield

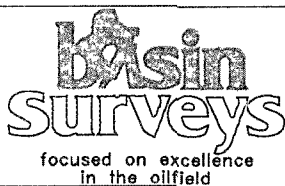
P.O. Box 1786  
1120 N. West County Rd.  
Hobbs, New Mexico 88241

(575) 393-7316 - Office  
(575) 392-2206 - Fax  
basinsurveys.com

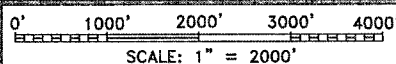


## TRUCKER BRK STATE #2H

Located 575' FSL and 200' FWL  
Section 2, Township 24 South, Range 33 East,  
N.M.P.M., Lea County, New Mexico.



P.O. Box 1786  
1120 N. West County Rd.  
Hobbs, New Mexico 88241  
(575) 393-7316 - Office  
(575) 392-2206 - Fax  
basinsurveys.com

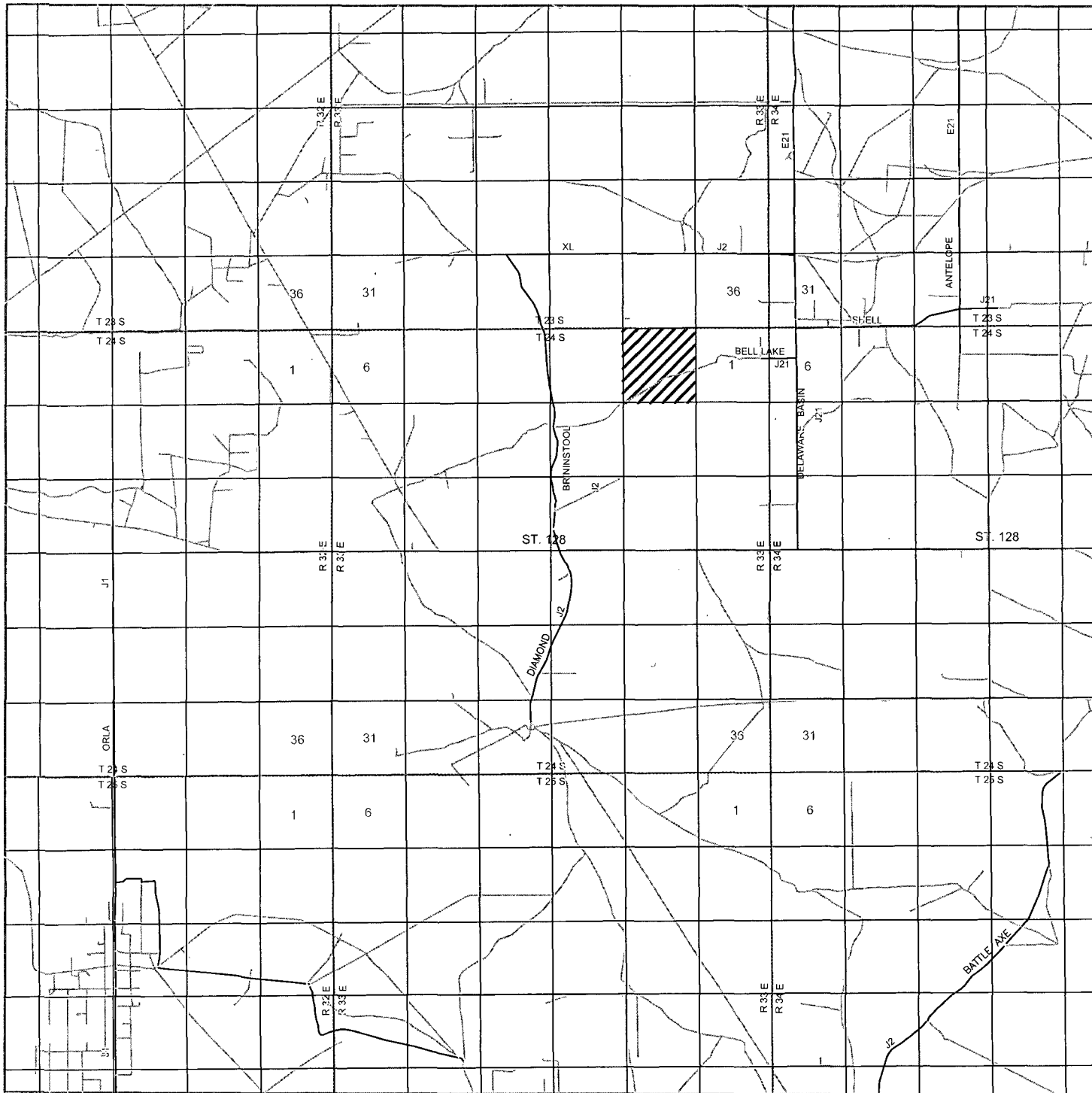


W.O. Number: KAN 30549

Survey Date: 07-02-2014

YELLOW TINT - USA LAND  
BLUE TINT - STATE LAND  
NATURAL COLOR - FEE LAND





**TRUCKER BRK STATE #2H**  
 Located 575' FSL and 200' FWL  
 Section 2, Township 24 South, Range 33 East,  
 N.M.P.M., Lea County, New Mexico.



P.O. Box 1786  
 1120 N. West County Rd.  
 Hobbs, New Mexico 88241  
 (575) 393-7316 - Office  
 (575) 392-2206 - Fax  
[basinsurveys.com](http://basinsurveys.com)

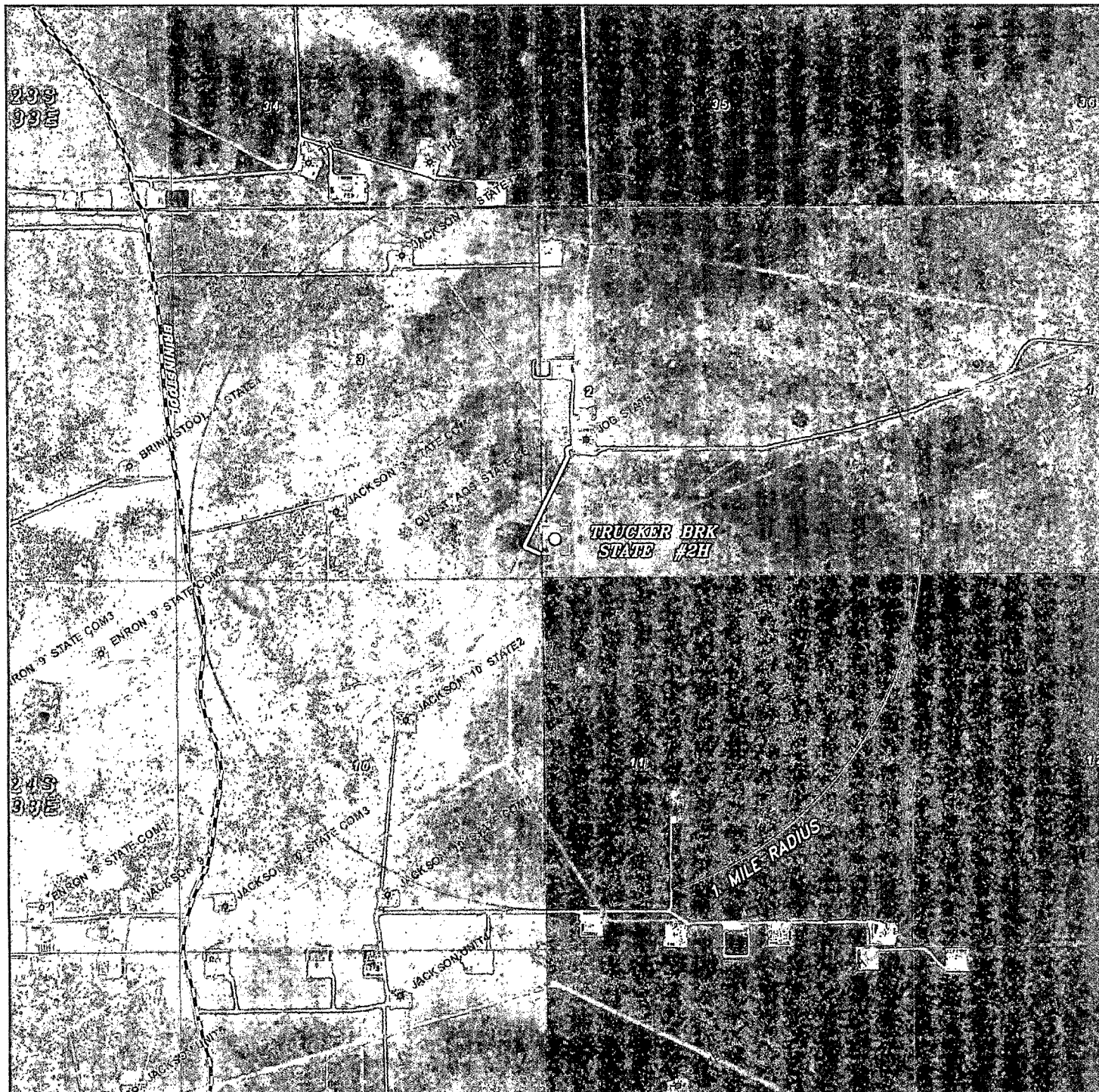
0 1 MI 2 MI 3 MI 4 MI  
 SCALE: 1" = 2 MILES

W.O. Number: KAN 30549

Survey Date: 07-02-2014

YELLOW TINT - USA LAND  
 BLUE TINT - STATE LAND  
 NATURAL COLOR - FEE LAND





**TRUCKER BRK STATE #2H**  
 Located 575' FSL and 200' FWL  
 Section 2, Township 24 South, Range 33 East,  
 N.M.P.M., Lea County, New Mexico.

**basin**  
**surveys**  
 focused on excellence  
 in the oilfield

P.O. Box 1786  
 1120 N. West County Rd.  
 Hobbs, New Mexico 88241  
 (575) 393-7316 - Office  
 (575) 392-2206 - Fax  
 basin-surveys.com

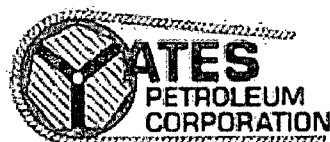
0' 1000' 2000' 3000' 4000'

SCALE: 1" = 2000'

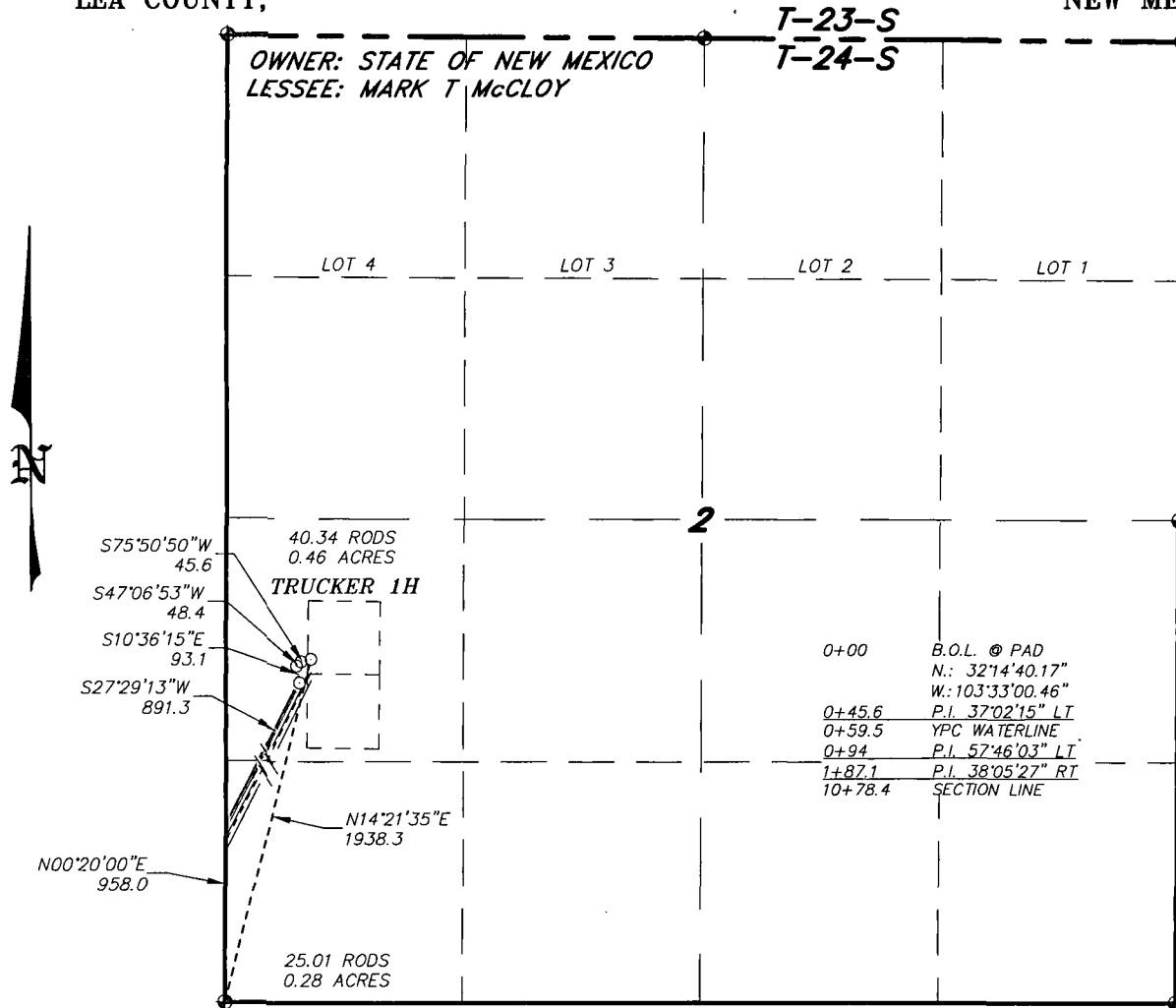
W.O. Number: KAN 30549

Survey Date: 07-02-2014

YELLOW TINT - USA LAND  
 BLUE TINT - STATE LAND  
 NATURAL COLOR - FEE LAND



Section 2, Township 24 South, Range 33 East, N.M.P.M.,  
LEA COUNTY, NEW MEXICO.



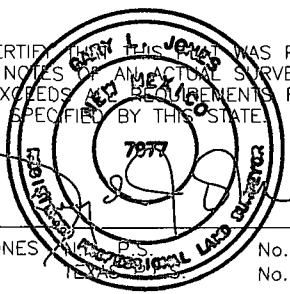
LEGAL DESCRIPTION

A STRIP OF LAND 30.0 FEET WIDE, LOCATED IN SECTION 2, TOWNSHIP 24 SOUTH, RANGE 33 EAST, N.M.P.M., LEA COUNTY, NEW MEXICO AND BEING 15.0 FEET LEFT AND RIGHT OF THE FOLLOWING DESCRIBED CENTERLINE SURVEY. BEGINNING AT A POINT WHICH LIES N.14°21'35\"E, 1938.3 FEET FROM THE SOUTHWEST CORNER OF SAID SECTION 2; THENCE S.75°50'50\"W., 45.6 FEET; THENCE S.47°06'53\"W., 48.4 FEET; THENCE S.10°36'15\"E., 93.1 FEET; THENCE S.27°29'13\"W., 891.3 FEET TO A POINT ON THE WEST SECTION LINE WHICH LIES N.00°20'00\"E., 958.0 FEET FROM THE SOUTHWEST CORNER OF SAID SECTION 2. SAID STRIP OF LAND BEING 1078.4 FEET OR 65.35 RODS IN LENGTH AND CONTAINING 0.74 ACRES, MORE OR LESS, AND BEING ALLOCATED BY FORTIES AS FOLLOWS:

NW/4 SW/4 = 40.34 RODS = 0.46 ACRES

SW/4 SW/4 = 25.01 RODS = 0.28 ACRES

I HEREBY CERTIFY THAT THIS SURVEY WAS PREPARED FROM FIELD NOTES OF AN ACTUAL SURVEY AND MEETS OR EXCEEDS ALL REQUIREMENTS FOR LAND SURVEYS AS SPECIFIED BY THIS STATE.



GARY L. JONES

No. 7977  
No. 5074

1000 0 1000 2000 FEET



**YATES** PETROLEUM CORPORATION

REF: PROPOSED LEASE ROAD TO TRUCKER STATE 2H

A ROAD CROSSING STATE LAND IN  
SECTION 2, TOWNSHIP 24 SOUTH, RANGE 33 EAST,  
N.M.P.M., LEA COUNTY, NEW MEXICO.

**basin**  
**surveys**  
focused on excellence  
in the oilfield

P.O. Box 1786  
1120 N. West County Rd.  
Hobbs, New Mexico 88241  
(575) 393-7316 - Office  
(575) 392-2206 - Fax  
basinsurveys.com

W.O. Number: 30549

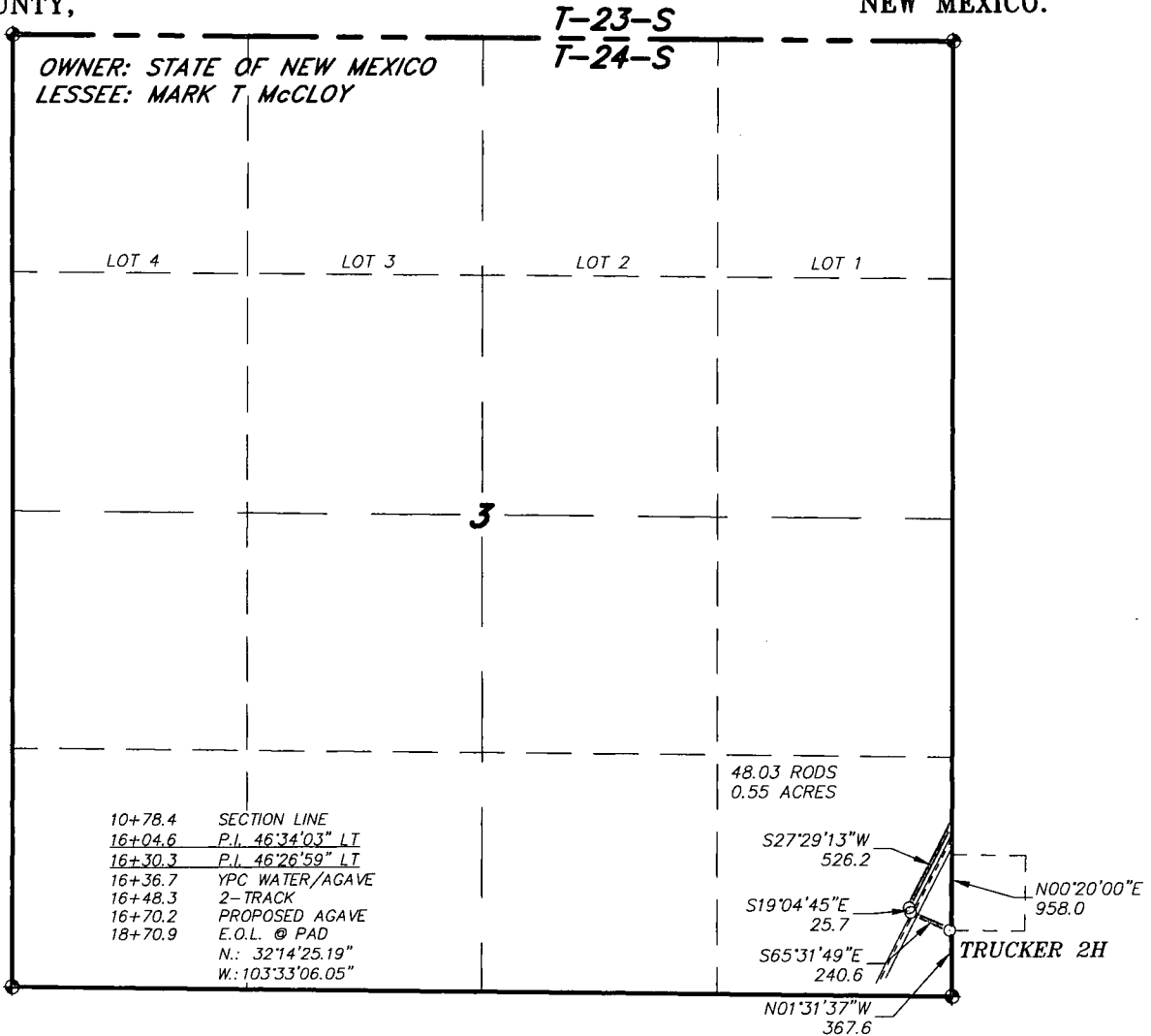
Drawn By: K. NORRIS

Date: 07-03-2014

Survey Date: 07-02-2014

Sheet 1 of 2 Sheets

Section 3, Township 24 South, Range 33 East, N.M.P.M.,  
LEA COUNTY, NEW MEXICO.

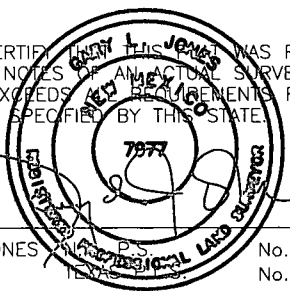


LEGAL DESCRIPTION

A STRIP OF LAND 30.0 FEET WIDE, LOCATED IN SECTION 3, TOWNSHIP 24 SOUTH, RANGE 33 EAST, N.M.P.M., LEA COUNTY, NEW MEXICO AND BEING 15.0 FEET LEFT AND RIGHT OF THE FOLLOWING DESCRIBED CENTERLINE SURVEY. BEGINNING AT A POINT WHICH LIES N.00°20'00\"E., 958.0 FEET FROM THE SOUTHEAST CORNER OF SAID SECTION 3; THENCE S.27°28'13\"W., 526.2 FEET; THENCE S.19°04'45\"E., 25.7 FEET; THENCE S.65°31'49\"E., 240.6 FEET TO THE END OF THIS LINE WHICH LIES N.01°31'37\"W., 367.6 FEET FROM THE SOUTHEAST CORNER OF SAID SECTION 3. SAID STRIP OF LAND BEING 792.5 FEET OR 48.03 RODS IN LENGTH AND CONTAINING 0.55 ACRES, MORE OR LESS, AND BEING ALLOCATED BY FORTIES AS FOLLOWS:

NE/4 NE/4 = 48.03 RODS = 0.55 ACRES

I HEREBY CERTIFY THAT THIS SURVEY WAS PREPARED FROM FIELD NOTES OF AN ACTUAL SURVEY AND MEETS OR EXCEEDS THE REQUIREMENTS FOR LAND SURVEYS AS SPECIFIED BY THIS STATE.



GARY L. JONES

No. 7977  
No. 5074

1000 0 1000 2000 FEET



PETROLEUM  
CORPORATION

REF: PROPOSED LEASE ROAD TO TRUCKER STATE 2H

A ROAD CROSSING STATE LAND IN  
SECTION 3, TOWNSHIP 24 SOUTH, RANGE 33 EAST,  
N.M.P.M., LEA COUNTY, NEW MEXICO.

**basin**  
**surveys**  
focused on excellence  
in the oilfield

P.O. Box 1786 (575) 393-7316 - Office  
1120 N. West County Rd. (575) 392-2206 - Fax  
Hobbs, New Mexico 88241 basinsurveys.com



# **Generic Plans for Temporary Pits**

**R.T. Hicks Consultants, Ltd.**

901 Rio Grande Blvd. NW, Suite F-142  
Albuquerque, NM 87104

## **Temporary Pit Design/Construction Plan**

Plates 1 and 2 show the design of the temporary pit proposed for this project. Field conditions and the drilling rig layout will determine the final configuration of the pit cells, which will consist of outer and inner drilling cells and an optional fluids cell as described below:

1. Drilling cells (reserve pit) consist of:
  - a. An outer horseshoe for
    - i. fresh water and cut-brine fluid and cuttings or
    - ii. brine and cut-brine fluid and cuttings
  - b. An inner horseshoe for
    - i. brine and fluid and cuttings or
    - ii. fresh water fluid and cuttings
2. The optional fluids cell may be used
  - a. For storage of fresh water used in drilling or stimulation
  - b. For storage of stimulation flow-back (fresh) water prior to re-use or disposal
  - c. As an approved disposal site for drilling solids derived from a nearby well on the same lease. Prior to such disposal the operator will provide notice to OCD that
    - i. Identifies the well(s) to be served by the fluids cell of the temporary pit
    - ii. Provides the date that the drilling rig moved from the first well using the pit
    - iii. Affirms that the fluids pit will be closed in conformance with the mandates of the Rule

In addition to the commitments listed below, the operator may install a system that can drain water entrained in the drilling waste of the drilling pit or rinse the solids to remove salt and/or petroleum hydrocarbons. The drainage system may be installed in the entire drilling cell or only in one horseshoe (e.g. the inner horseshoe). As described in the closure plan, this system of fabric-wrapped perforated pipe and drainage mats lie on the bottom of the drilling cells of the pit. The system will drain to the lowest corner of horseshoe where a standpipe rises from the depression to the top of the berm. The drainage system can remove water to an above-ground tank, the fluids cell of the pit, or directly to a truck for re-use or disposal. The drainage system may also be used to introduce fresher water below the residual cuttings/mud, causing the introduced fluid to move upwards through the cuttings/mud and enhance the solids rinsing process. After any rinsing process, the water can be removed from the pit for re-use via a vacuum truck or recovered from the drainage system at the bottom.

The temporary storage of fluids, fluid reuse or fluid disposal will be conducted in a manner approved by division rules that prevents the contamination of fresh water and protects public health and the environment. This drainage and rinsing system allows the operator to:

- Recover clear water for possible re-use
- Reduce the concentration of constituents of concern in the drilling waste by removing some water entrained in the drilling waste.

Precipitation and the possible addition of relatively fresh water (see closure plan) will rinse the solid drilling waste, causing additional reduction in the constituents of concern as the water is recovered for re-use or disposal.

## **C-144 Supplemental Documentation for Temporary Pit**

For any temporary storage of fluids derived from the drilling pit and placed in an above-ground tank, the following will apply:

1. Construction, operation and maintenance of the temporary storage tank(s) will adhere to all applicable NMOCD Rules including but not limited to:
  - a. Safety stipulations
  - b. Protection from hydrogen sulfide mandates
  - c. Signage and identification requirements
  - d. Secondary containment requirements for temporary tanks
  - e. Applicable netting requirements
2. Any cleaning of the temporary tank(s) will adhere to NMOCD Rules relating to tank cleaning.
3. Transportation of water or drilling fluids derived from the drilling pit will adhere to all applicable NMOCD Rules relating to transportation.
4. Storage of water or drilling fluids in temporary above-ground tanks will also adhere to all applicable Federal mandates.

During final closure of the pit, the tanks and any secondary containment system will be removed from the location and the area beneath the tank inspected for any leakage. If any leakage is suspected, the operator will sample the soil beneath the tanks and report any release pursuant to NMOCD Rules.

Finally, we intend to place any temporary tank used in conjunction with the pit drainage system on a 20-mil LLDPE string-reinforced liner (that meets the requirements of OCD Rules for temporary pits) with a berm around it that would allow any inadvertently released fluids to drain or be pumped back into the pit.

### ***Construction/Design Plan of Temporary Pit***

#### **Stockpile Topsoil**

Prior to constructing the pit the qualified contractor will strip and stockpile the topsoil for use as the final cover or fill at the time of closure.

#### **Signage**

The operator will post an upright sign in a conspicuous place in compliance with 19.15.16.8 NMAC as the pit and the well are operated by the same operator. Section 19.15.16.8 states in part:

##### **19.15.16.8 SIGN ON WELLS:**

B. For drilling wells, the operator shall post the sign on the derrick or not more than 20 feet from the well.

C. The sign shall be of durable construction and the lettering shall be legible and large enough to be read under normal conditions at a distance of 50 feet.

F. Each sign shall show the:

- (1) well number;
- (2) property name;
- (3) operator's name;
- (4) location by footage, quarter-quarter section, township and range (or unit letter can be substituted for the quarter-quarter section);

## C-144 Supplemental Documentation for Temporary Pit

and

(5) API number.

The sign will also provide emergency telephone numbers.

### **Fencing:**

During drilling or workover operations, the operator will not fence the edge of the pit adjacent to the drilling or workover rig.

As the pit is not located within 1000 feet of a permanent residence, school, hospital, institution or church, the operator will fence the pit to exclude livestock with four-wire strands evenly spaced in the interval between one foot and four feet above ground level.

### **Earthwork**

The temporary pit will have a properly constructed foundation and interior slopes consisting of a firm, unyielding base that is smooth and free of rocks, debris, sharp edges or irregularities to prevent the liner's rupture or tear.

The slopes of the pit will be no steeper than two horizontal feet to one vertical foot (2H:1V) unless in the transmittal letter the operator requested an alternative to the slope requirement with a demonstration that the pit can be operated in a safe manner to prevent contamination of fresh water and protect public health and the environment.

A berm or ditch will surround the temporary pit to prevent run-on of surface water.

If the transmittal letter identifies concerns relating to the presence of karst and associated instability, during construction of the pit the contractor will compact the earth material that forms the foundation for the pit liner. An expected proctor density of greater than 90% will be achieved by

1. adding water to the earth material as appropriate,
2. compacting the earth by walking a crawler-type tractor down the sides and bottom of the pit
3. repeating this process with a second 6-inch lift of earth material if necessary

### **Liner Installation**

The geomembrane liner will consist of 20-mil string reinforced LLDPE as specified by and meets all requirements of OCD Rules.

The operator will direct the liner installation contractor to:

1. minimize liner seams and orient them up and down, not across a slope
2. use factory welded seams where possible
3. overlap liners four to six inches and orient seams parallel to the line of maximum slope, i.e., oriented along, not across, the slope, prior to any field seaming
4. minimize the number of welded field seams in comers and irregularly shaped areas
5. utilize only qualified personnel to weld field seams
6. avoid excessive stress-strain on the liner
7. place geotextile under the liner where needed to reduce localized stress-strain or

## **C-144 Supplemental Documentation for Temporary Pit**

- protuberances that may otherwise compromise the liner's integrity
- 8. anchor the edges of all liners in the bottom of a compacted earth-filled trench that is at least 18 inches deep
- 9. place additional material (liner, felt, etc.) to ensure that the liner is protected from any fluid force or mechanical damage at any point of discharge into or suction from the lined temporary pit.

A berm or ditch will surround the temporary pit to prevent run-on of surface water. During drilling operations, the operator may elect to remove run-on protection on the pit edge adjacent to the drilling or workover rig provided that the pit is being used to collect liquids escaping from the drilling or workover rig and this additional fluid will not cause a breach of the temporary pit.

The temporary pit will not be used to vent or flare gas and the volume of the temporary drilling pit, including freeboard, will not exceed 10 acre-feet.

## **Temporary Pit Operating and Maintenance Plan**

The operator will maintain and operate the pit in accordance with the following plan to contain liquids and solids and maintain the integrity of the liner to prevent contamination of fresh water and protect public health and the environment.

If feasible, the operator will recycle, reuse or reclaim all drilling fluids in the temporary pit in a manner approved by division rules that prevents the contamination of fresh water and protects public health and the environment. Re-use of drilling fluids and workover fluids (stimulation flow-back) for drilling and stimulation of subsequent wells is anticipated. If re-use is not possible, fluids will be sent to disposal at a division-approved facility.

The operator will not discharge into or store any hazardous waste in the pit.

If the pit develops a leak or if any penetration of the pit liner occurs above the liquid's surface, then the operator will repair the damage or initiate replacement of the liner within 48 hours of discovery or will seek a variance from the division district office within this time period.

If the pit develops a leak or if any penetration of the pit liner occurs below the liquid's surface, then the operator will remove all liquid above the damage or leak line within 48 hours of discovery. The operator will also notify the district division office (19.15.29 NMAC) within this same 48 hours of the discovery and repair the damage or replace the pit liner.

The operator will ensure that the drilling contractor installs and uses a header, diverter or other hardware that prevents damage to the liner by erosion, fluid jets or impact from installation and removal of hoses or pipes during injection or withdrawal of liquids.

During construction, the operator or qualified contractor will install diversion ditches and berms around the pit as necessary to prevent the collection of surface water run-on. As outlined in the Construction and Design Plan, during drilling operations, the edge of the temporary pit adjacent to the drilling or workover rig may not have run-on protection if the operator is using the temporary pit to collect liquids escaping from the drilling or workover rig and run-on will not result in a breach of the temporary pit.

The operator will maintain on site an oil absorbent boom to contain and remove oil from the pit's surface.

The operator will only discharge fluids or mineral solids (including cement) generated or used during the drilling, completion, or workover processes into the pit.

The operator will maintain the temporary pit free of miscellaneous solid waste or debris. Immediately after cessation of drilling or a workover operation, the operator will remove any visible or measurable layer of oil from the surface of the pit.

The operator will maintain at least two feet of freeboard for the temporary pit, except under extenuating circumstances, which will be noted on the pit inspection log as described below.

## **C-144 Supplemental Documentation for Temporary Pit**

The operator will inspect the temporary pit containing drilling fluids daily while the drilling rig or workover rig is on site. After the rigs have left the site, the operator will inspect the pit weekly as long as liquids are present in the pit. The operator will maintain a log of the inspections. The operator will make the log available to the division district office upon request.

The operator will remove all free drilling fluids from the surface of the temporary pit within 60 days from the date that the last drilling or workover rig associated with the pit permit is released. The operator will note the date of this release upon Form C-105 or C-103 upon well or workover completion. The operator may request an extension up to two months from the division district office as long as this additional time does not exceed the temporary pit life span (Subsection R of 19.15.17.7 NMAC).

## **Temporary Pit In-Place Closure Plan**

The wastes in the temporary pit are destined for in place burial at the drilling location. However, a transmittal letter may notify OCD that drilling waste from a nearby site on the same lease may be placed in the temporary pit (e.g. placed in the drilling or fluids cells of the temporary pit). A notice will include the name of the nearby well, the date that the drilling or workover rig moved from the temporary pit, an affirmation that the temporary pit will be closed in conformance with the mandates of the Rule, including the mandated lifetime of the pit.

The operator will not begin closure operations without approval of the closure plan submitted with the permit application.

### **Siting Criteria Compliance Demonstration**

Compliance with siting criteria is described in the site-specific information appended to the C-144.

### **Proof of Surface Owner Notice**

The application package was transmitted to the surface landowner via email, which serves as notification that the operator intends on-site burial of solids.

### **Construction/Design Plan of Temporary Pit**

The design and construction protocols for the temporary pit are provided in the design and construction plan and in Plates 1-2. The optional drainage system described in the design and construction plan is not shown on the Plates but can be important element of the closure plan.

### **General Protocols and Procedures**

- All free liquids from the pit will be recycled or disposed in a manner consistent with OCD Rules.
- Residual drilling fluids will be removed from the pit within 60 days of release of the last drilling or workover rig associated with the relevant pit permit.
- Water derived from the well stimulation program (flow-back or unused fresh water) that is significantly higher quality than the residual drilling fluids *may* discharge into the pit. The fresher water *may* discharge into the drainage system to flow through the solids or onto the solids in the pit.
- A low-flow pump *may* remove water from the drainage system to a tank or the fluids cell of the temporary pit; thereby further rinsing the residual solids in the pit.
- 20-60 days after placement of fresh or flow-back water into the drilling cell, any water in the pit will be removed for re-use or disposal.
- The residual drilling mud and cuttings will be stabilized to a capacity sufficient to support the 4-foot thick soil cover.
- The residual pit solids will not be mixed at a ratio greater than 1 part pit solids to 3 parts dry earth material (e.g. subsoil).
- The pit will not be closed until the stabilized pit contents pass the paint filter liquids test.



## C-144 Supplemental Documentation for Temporary Pit

### Waste Material Sampling Plan

Prior to closure, an eight-point composite sample of the residual solids in the drilling cell of the temporary pit and a five-point composite sample of any solids in the fluids cell of the temporary pit will be tested in a laboratory to demonstrate that the stabilized material will not exceed the contaminant concentrations listed in Table II of 19.15.17.13 NMAC after being mixed in a ratio of 3:1 with the earth material to be used for stabilization of the residual cuttings and mud. A volumetric average of the laboratory result from the drilling cell solids and any fluid cells solids will be used to determine compliance with the standards of Table II.

In-place burial is the selected on-site disposal alternative.

If a concentration of a contaminant within the material mixed at a ratio not exceeding 3:1 is higher than the concentration given in Table II, closure will proceed in accordance with Subsection C of 19.15.17.13 NMAC.

### Protocols and Procedures for Earthwork

Stabilization of the residual cuttings and mud is accomplished by mixing dry earth material within the temporary pit footprint. After stabilization the operator or qualified contractor will:

1. Place a geomembrane cover over the sloping surface of the stabilized waste material. It will be placed in a manner so as to prevent infiltration of water and so that infiltrated water does not collect on the geomembrane cover after the upper soil cover has been placed.
2. Use a geomembrane cover made of 20-mil string reinforced LLDPE liner
3. Over the sloping, stabilized material and liner, place the **Soil Cover** of:
  - a. at least 3-feet of compacted, uncontaminated, non-waste containing earthen fill with chloride concentrations less than 600 mg/kg as analyzed by EPA Method 300.0.
  - b. either the background thickness of topsoil or one foot of suitable material to establish vegetation at the site, whichever is greater, over the 3-foot earth material.
4. Contour the cover to
  - a. blend with the surrounding topography
  - b. prevent erosion of the cover and
  - c. prevent ponding over the cover.

### Closure Notice

The operator will notify the surface owner by certified mail, return receipt requested, that the operator plans closure operations at least 72 hours, but not more than one week, prior to any closure operation. The notice will include the well name, API number, and location.

After approval for in-place burial, the operator shall notify the district office verbally and in writing at least 72 hours but not more than one week before any closure operation. Notice will include the operator's name and the location of the temporary pit. The location will include unit letter, section number, township and range. If the location is associated with a well, then the well's name, number and API number will be included.

Should onsite burial be on private land, the operator will file a deed notice including exact location of the burial with the county clerk of the county where the onsite burial is located.

## **C-144 Supplemental Documentation for Temporary Pit**

### **Closure Report**

Within 60 days of closure completion, the operator will submit a

- i. closure report on form C-144, with necessary attachments
- ii. a certification that all information in the report and attachments is correct, that the operator has complied with all applicable closure requirements and conditions specified in the approved closure plan
- iii. a plat of the pit location on form C-105  
if burial includes solids derived from a nearby well on the same lease, the report will list the name, API # and location of the well(s) from which the solids originated

Unless the permit transmittal letter requests an alternative marker to comply with surface landowner specifications, the operator will place at the center of an onsite burial a steel marker that

- is not less than four inches in diameter
- is placed at the bottom of a three-foot deep hole (minimum) that is filled with cement to secure the marker
- is at least four feet above mean ground level
- permanently displays the operator name, lease name, well number, unit letter, section, township and range in welded or stamped legible letters/numbers

### **Timing of Closure**

The operator will close the temporary pit within 6 months from the date the drilling rig was released from the first well using the pit. This date will be noted on form C-105 or C-103 filed with the division upon the well's completion (or re-completion in the case of a workover).

### **Reclamation and Re-vegetation Plan**

In addition to the area of the in-place burial, the operator will reclaim the surface impacted by the temporary pit, including access roads associated with the pit, to a safe and stable condition that blends with the surrounding undisturbed area including:

Areas not reclaimed as described herein due to their use in production or drilling operations will be stabilized and maintained to minimize dust and erosion. This includes the area of the temporary pit if a transmittal letter to OCD proposes an alternative to the re-vegetation or recontouring requirement with

- a demonstration that the proposed alternative provides equal or better prevention of erosion, and protection of fresh water, public health and the environment
- written documentation that the alternative is agreed upon by the surface owner.

As stated above, the soil cover for burial in-place

- A. consists of a minimum of three feet of non-waste containing, uncontaminated, earthen material with chloride concentrations less than 600 mg/kg (or background concentration) as analyzed by EPA Method 300.0 placed over the liner and stabilized solids
- B. is capped by the background thickness of topsoil or 1-foot of suitable material to establish vegetation, whichever is greater
- C. blends into surrounding topography
- D. is graded to prevent ponding and to minimize erosion

## **C-144 Supplemental Documentation for Temporary Pit**

For all areas disturbed by the closure process that will not be used for production operations or future drilling, the operator will

- I. Replace topsoils and subsoils to their original relative positions
- II. Grade so as to achieve erosion control, long-term stability and preservation of surface water flow patterns
- III. Reseed in the first favorable growing season following closure

Re-vegetation and reclamation plans imposed by the surface owner will be outlined in communications with the OCD.

The operator will notify the division when the surface grading work element of reclamation is complete.

The operator will notify the division when the site meets the surface owner's requirements or exhibits a uniform vegetative cover that reflects a life-form ratio of plus or minus fifty percent (50%) of pre-disturbance levels and a total percent plant cover of at least seventy percent (70%) of pre-disturbance levels, excluding noxious weeds.

# **Appendix A**

## **Hydrogeology of Bell Lake Area**

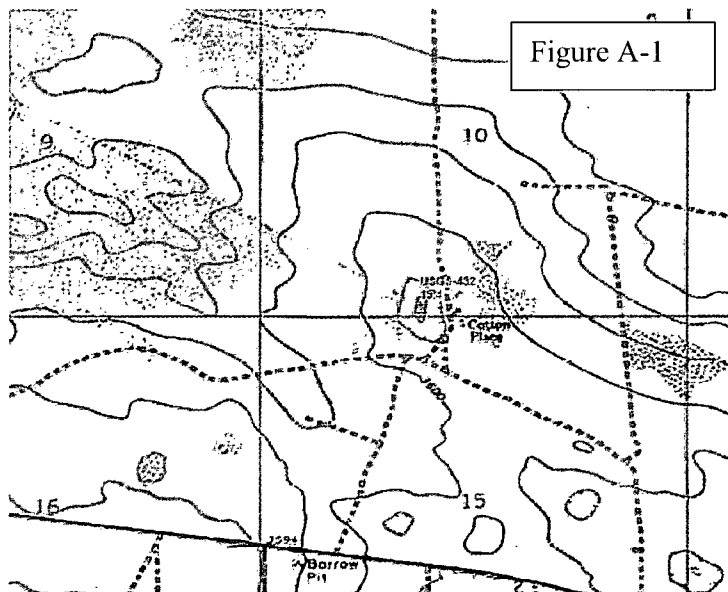
### Geology and Topography of Bell Lake Area

Exhibit A and B display the area to which this Appendix refers. Exhibit A is the water table elevation map based upon Triassic Bedrock water wells. Exhibit A is reproduced from Ground-Water Report 6 (GWR-6) *Geology and Ground-Water Conditions in Southern Lea County, New Mexico* by Alexander Nicholson and Alfred Clebsch (1961). Exhibit B is a groundwater elevation map reproduced from *Collection of Hydrologic data, Eastside Roswell Range EIS Area, New Mexico* (Open File Report OF-95) by Geohydrology and Associates (1978). OF-95 uses some of the same data as GWR-6 plus additional data collected by those authors.

Quaternary Age eolian and piedmont deposits (Qe/Qp on Figure 1 of the permit package) are the dominant exposed material in the area. These deposits are a thin covering of the underlying Tertiary Ogallala Formation or, in some places, the redbeds of the Dockum Group. The Ogallala Formation (To) is locally exposed and consists primarily of sand with some clay, silt and gravel, generally capped by caliche. Based on information from GWR-6, the top of the redbeds near Bell Lake is about 3500-3600 above sea level (see Plate 1 of GWR-6). Because the area outside of the Bell Lake Sink lies at an elevation of 3600 feet, the Ogallala Formation, if it is present, could be about 100 feet thick near Bell Lake. In other nearby areas, the thickness of the Ogallala could be more or less than 100 feet.

Topographically, the western three quarters of the Bell Lake area (See Exhibit A) of interest slopes gently to the southeast or, in the southwest corner of Figures 1 and 2, to the southwest. This sloping surface is punctuated by several closed depressions. The Bell Lake Sink (see Exhibits A and B; attached), a 2-mile wide circular depression is the most obvious of several. These depressions have been described as an ancient collapse feature (breccia pipes) associated with the removal of salt due to upward groundwater flow from the Capitan Reef<sup>1</sup>. One smaller depression exists about 5 miles west of the Bell Lake Sink in Section 10 T24S R32E, the Cotton

Place (Exhibits A and B, also shown in Figure A-1).



The northeast quarter of Figure 1 and Figure 2 of the permit package show Antelope Ridge grading northeast into the gently sloping surface described above and the topographic low of the San Simon Swale. In the northeastern most portion of Figure 2, and as shown on Exhibit A and B, is the San Simon Sink, a collapse feature akin to the Bell Lake Sink.

<sup>1</sup> See [http://nmgs.nmt.edu/publications/guidebooks/downloads/57/57\\_p233-242.pdf](http://nmgs.nmt.edu/publications/guidebooks/downloads/57/57_p233-242.pdf)

## APPENDIX A – HYDROGEOLOGY OF THE BELL LAKE AREA

Within the two Sinks mentioned above and a smaller closed depression associated with Red Tank in the southern portion of Figure 1, older alluvium (Qoa) is exposed at the surface.

With respect to other “Misc.” wells shown on Figure 1, below are the results of the field inspections:

- Well Misc-11 is an active windmill but could not be accessed to update the water level measurement in OF-95
- Water well Misc -15 (C2279) is a windmill at the Ranch Headquarters accessed on November 12, 2013 and the depth to water is greater than 454 feet.
- Water well Misc-18 (445, C2308) was accessed on October 10, 2012 and the depth-to-water was measured at 22 feet below ground surface.
- Depth to water in well Misc-61(C 2312) was measured on April 3, 2013 at 112.4.
- Well Misc-12 is plugged and abandoned.
- Well Misc-98 was accessed on November 12, 2013 and the measured depth to water was 213.5 feet from the top of casing. The total depth of this well is 215 feet.
- The Bell Lake Windmill, which is not labeled as a “Misc” well but is identified on the USGS topographic map, is plugged.

### Hydrogeology

GWR-6 (1961) indicates that Ogallala groundwater is not present as a regional aquifer within the Bell Lake area. The lack of a regional water table aquifer described in GWR-6 is borne out in the data from well Misc-12, located in the central portion of Figure 1. Here, the water supply well spuds on Ogallala Formation (To), is drilled to a total depth of 232 feet and records a water level of 208.7 feet below land surface. The water elevation in well Misc-12 (3,326 feet asl) lies below the projected bottom of the Ogallala Formation (3,550 feet asl at this location). All wells outside of ancient collapse features record water levels below the projected base of the Ogallala and tap water bearing units within the red beds (Dockum Group). These data are represented in Exhibit A and, for the most part, Exhibit B.

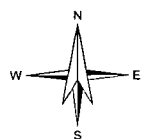
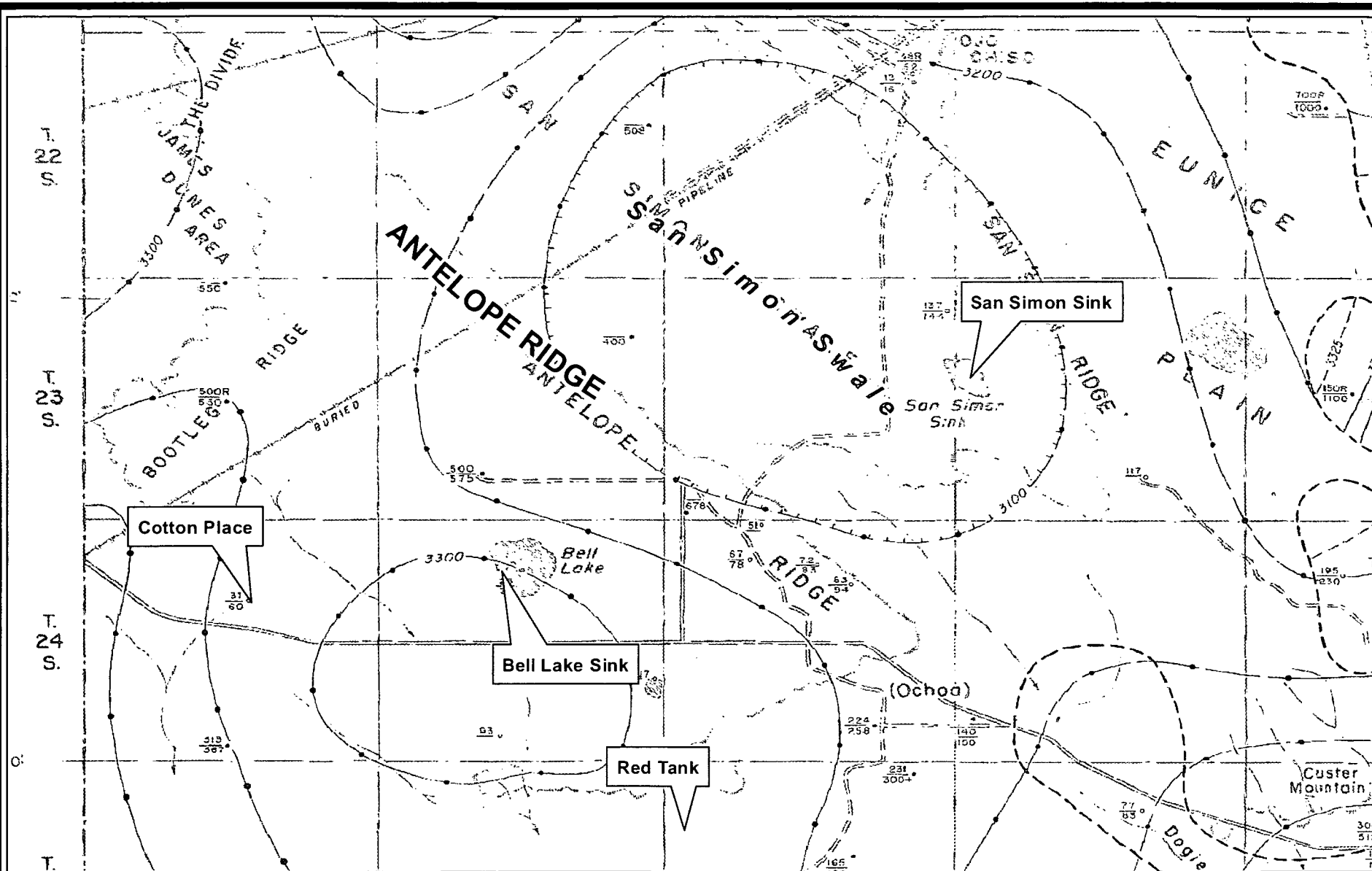
The Bell Lake Windmill and wells Misc-18/USGS-445 obviously tap a shallow water table associated with the collapse features described above (north central area of Figure 1). Within the Bell Lake Sink are two water supply wells (visible on USGS topographic maps), the plugged Bell Lake Windmill and the abandoned (but open casing) Bell Well. The water level in the abandoned Bell Well is 22 feet below grade at a projected elevation of 3,568 (3590-22). Obviously this water level is highly localized because the surface elevation at Bell Lake is 3,562 (about 5-feet lower than the Bell Lake Windmill) and the lake holds no water. The horizontal limit of groundwater within the Bell Lake Sink is also documented by the hydrogeologic logging conducted at the Mogi 9 State 1H (Misc-68) and Brinninstool 4 State 3H (Misc-69) sites where the 120-foot deep borings were logged as dry sediments.

Because groundwater within the various depressions is shallow (i.e. less than 30 feet below surface) and limited in horizontal extent, we did not employ these data to determine the elevation of the regionally-extensive water table (Figure 2).

The potentiometric surface map displayed in Figure 2 is different from that in 1961 map published in GW Report 6 (Exhibit A) and the 1971 map published in Open File Report OF-95 (see Exhibit B). We believe the principal differences between Figure 2 and the potentiometric

## APPENDIX A – HYDROGEOLOGY OF THE BELL LAKE AREA

surface map in GW Report 6 are due to the fact that there are now significantly more data points available to create Figure 2. With respect to the map presented in Open File Report OF-95, more data also contributes to the differences. However, the 1961 and 1971 maps suggest that the perched, localized groundwater in Bell Lake Sink and similar depressions are representative of the underlying Dockum Group aquifer. Figure 2 distinguishes between the shallow (perched and Ogallala) and deep (Dockum) groundwater zones.



0 1.5 3  
Miles

R.T. Hicks Consultants, Ltd  
901 Rio Grande Blvd NW Suite F-142  
Albuquerque, NM 87104  
Ph: 505.266.5004

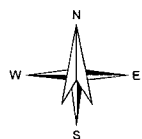
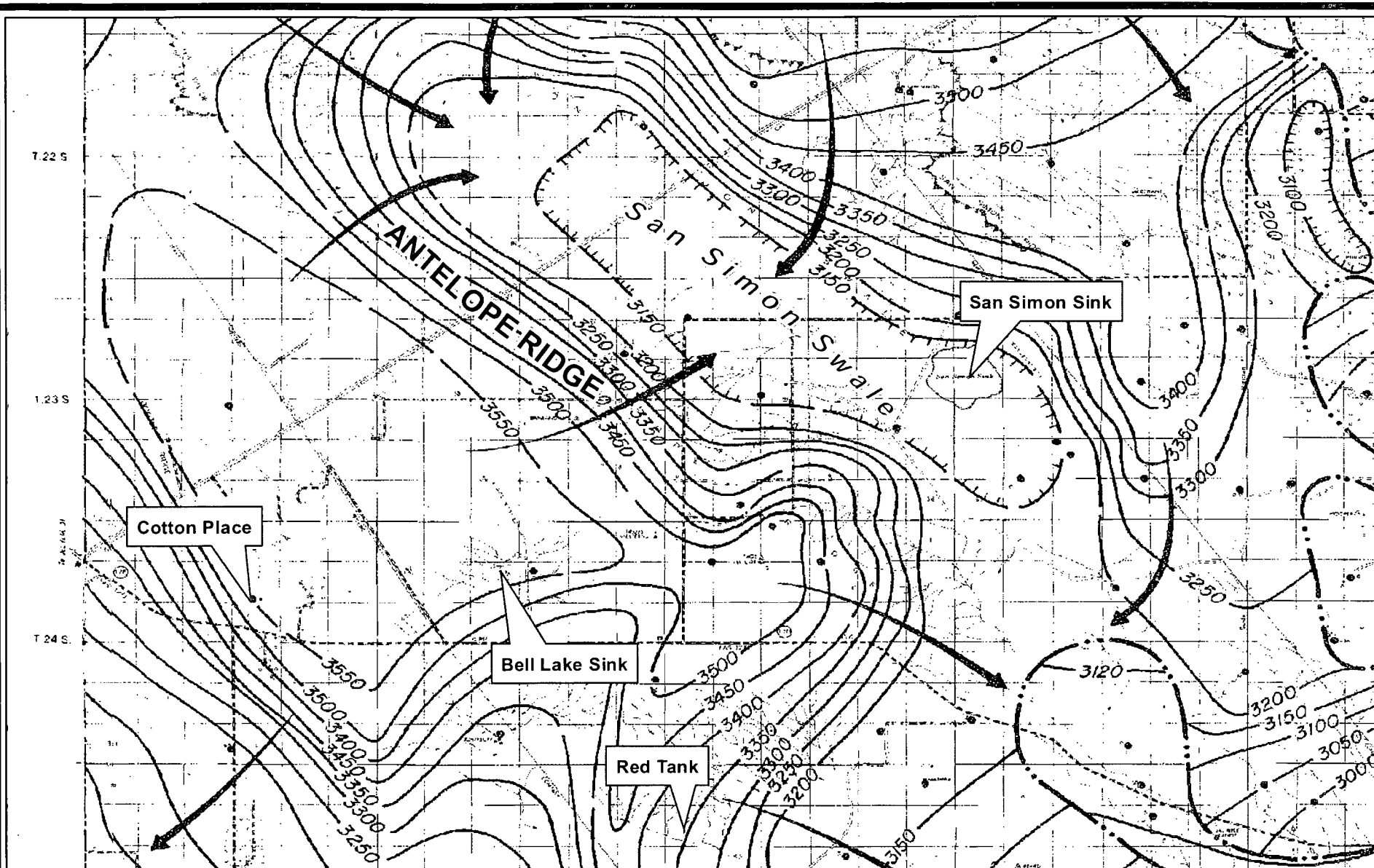
Nicholson and Clebsch (1961)

Appendix A Supplement Map

Exhibit A

November 2013





0 1.5 3  
Miles

R.T. Hicks Consultants, Ltd  
901 Rio Grande Blvd NW Suite F-142  
Albuquerque, NM 87104  
Ph: 505.266.5004

Open File Report 95 (OF-95)

Appendix A Supplement Map

Exhibit B

November 2013