

H₂S Contingency Plan
Triste Draw 25 Federal 7H
Cimarex Energy Co.
UL: P, Sec. 25, 23S, 32E
Lea Co., NM

HOBBS OCD

AUG 29 2014

RECEIVED

Emergency Procedures

In the event of a release of gas containing H₂S, the first responder(s) must:

- « Isolate the area and prevent entry by other persons into the 100 ppm ROE.
- « Evacuate any public places encompassed by the 100 ppm ROE.
- « Be equipped with H₂S monitors and air packs in order to control the release.
- « Use the "buddy system" to ensure no injuries occur during the response.
- « Take precautions to avoid personal injury during this operation.
- « Contact operator and/or local officials to aid in operation. See list of phone numbers attached.
- « Have received training in the:
 - Detection of H₂S, and
 - Measures for protection against the gas,
 - Equipment used for protection and emergency response.

Ignition of Gas Source

Should control of the well be considered lost and ignition considered, take care to protect against exposure to Sulfur Dioxide (SO₂). Intentional ignition must be coordinated with the NMOCD and local officials. Additionally, the NM State Police may become involved. NM State Police shall be the Incident Command on scene of any major release. Take care to protect downwind whenever there is an ignition of the gas.

Characteristics of H₂S and SO₂

Please see attached International Chemical Safety Cards.

Contacting Authorities

Cimarex Energy Co. of Colorado's personnel must liaise with local and state agencies to ensure a proper response to a major release. Additionally, the OCD must be notified of the release as soon as possible but no later than 4 hours. Agencies will ask for information such as type and volume of release, wind direction, location of release, etc. Be prepared with all information available including directions to site. The following call list of essential and potential responders has been prepared for use during a release. Cimarex Energy Co. of Colorado's response must be in coordination with the State of New Mexico's "Hazardous Materials Emergency Response Plan" (HMER).

H₂S Contingency Plan Emergency Contacts

Triste Draw 25 Federal 7H

Cimarex Energy Co.

UL: P, Sec. 25, 23S, 32E

Lea Co., NM

Company Office

Cimarex Energy Co. of Colorado	800-969-4789
Co. Office and After-Hours Menu	

Key Personnel

Name	Title	Office	Mobile
Larry Seigrist	Drilling Manager	432-620-1934	580-243-8485
Doug McQuitty	Drilling Superintendent	432-620-1933	806-640-2605
Scott Lucas	Drilling Superintendent	432-620-1989	432-894-5572
Roy Shirley	Construction Superintendent		432-634-2136

Artesia

Ambulance	911
State Police	575-746-2703
City Police	575-746-2703
Sheriff's Office	575-746-9888
Fire Department	575-746-2701
Local Emergency Planning Committee	575-746-2122
New Mexico Oil Conservation Division	575-748-1283

Carlsbad

Ambulance	911
State Police	575-885-3137
City Police	575-885-2111
Sheriff's Office	575-887-7551
Fire Department	575-887-3798
Local Emergency Planning Committee	575-887-6544
US Bureau of Land Management	575-887-6544

Santa Fe

New Mexico Emergency Response Commission (Santa Fe)	505-476-9600
New Mexico Emergency Response Commission (Santa Fe) 24 Hrs	505-827-9126
New Mexico State Emergency Operations Center	505-476-9635

National

National Emergency Response Center (Washington, D.C.)	800-424-8802
---	--------------

Medical

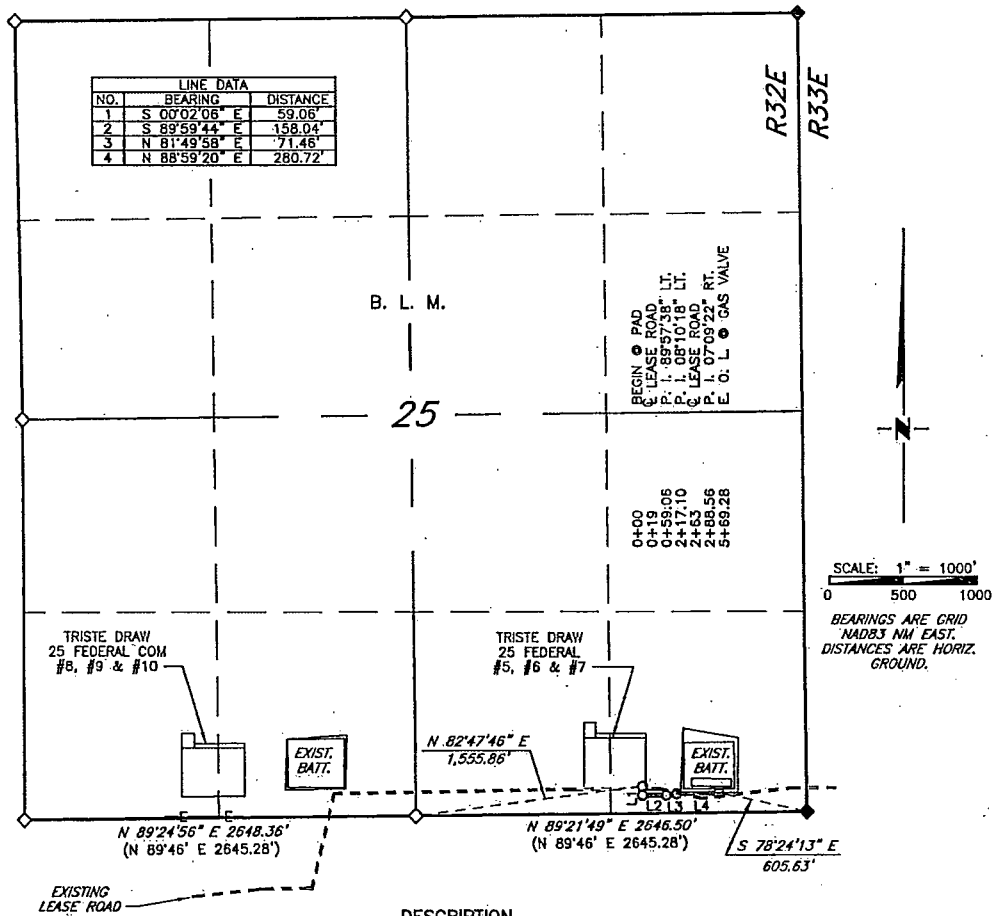
Flight for Life - 4000 24th St.; Lubbock, TX	806-743-9911
Aerocare - R3, Box 49F; Lubbock, TX	806-747-8923
Med Flight Air Amb - 2301 Yale Blvd S.E., #D3; Albuquerque, NM	505-842-4433
SB Air Med Service - 2505 Clark Carr Loop S.E.; Albuquerque, NM	505-842-4949

Other

Boots & Coots IWC	800-256-9688	or	281-931-8884
Cudd Pressure Control	432-699-0139	or	432-563-3356
Halliburton	575-746-2757		
B.J. Services	575-746-3569		

CIMAREX ENERGY COMPANY

4" FLOW LINE EASEMENT TO TRISTE DRAW FEDERAL #5, #6 & #7 SEC. 25, T23S, R32E, N.M.P.M., LEA CO., N.M.



A strip of land, 30 feet in width, being 569.28 feet or 34.502 rods in length situated in Section 25, Township 23 South, Range 32 East, N. M. P. M., Lea County, New Mexico, being 15 feet left and 15 feet right of the following described survey of centerline across the land of the B. L. M.:

Beginning at Engr. Sta. 0+00, a point which lies N 82°47'46" E, 1555.86 feet from a brass cap stamped "1916" found for the South quarter corner of the aforementioned Section 25;

Thence S 00°02'06" E, 59.06 feet to Engr. Sta. 0+59.06, a P. I. of 89°57'38" left;

Thence S 89°59'44" E, 158.04 feet to Engr. Sta. 2+17.10, a P. I. of 08°10'18" left;

Thence N 81°49'58" E, 71.46 feet to Engr. Sta. 2+88.56, a P. I. of 07°09'22" right;

Thence N 88°59'20" E, 280.72 feet to Engr. Sta. 5+69.28, the end of the survey, from which a brass cap stamped "1913" found for the Southeast corner of the above-mentioned Section 25 bears S 78°24'13" E, 605.63 feet;

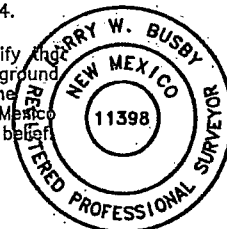
Said strip of land containing 0.392 acre, more or less all within the SE 1/4 SE 1/4.

I, Larry W. Busby, a N. M. Professional Surveyor, hereby certify that this plat was prepared from an actual survey made on the ground under my direct supervision and the survey and plat meet the Minimum Standards for Land Surveying in the State of New Mexico and are true and correct to the best of my knowledge and belief.

LEGEND

- () RECORD DATA - GLO
- ◇ FOUND BRASS CAP STAMPED "1916"
- ◆ FOUND BRASS CAP STAMPED "1913"

Larry W. Busby
NM PS 11398



Copyright 2013 - All Rights Reserved

NO.	REVISION	DATE
JOB NO.:	LS130531	
DWG. NO.:	130531FL1	

PROSPERITY CONSULTANTS, LLC

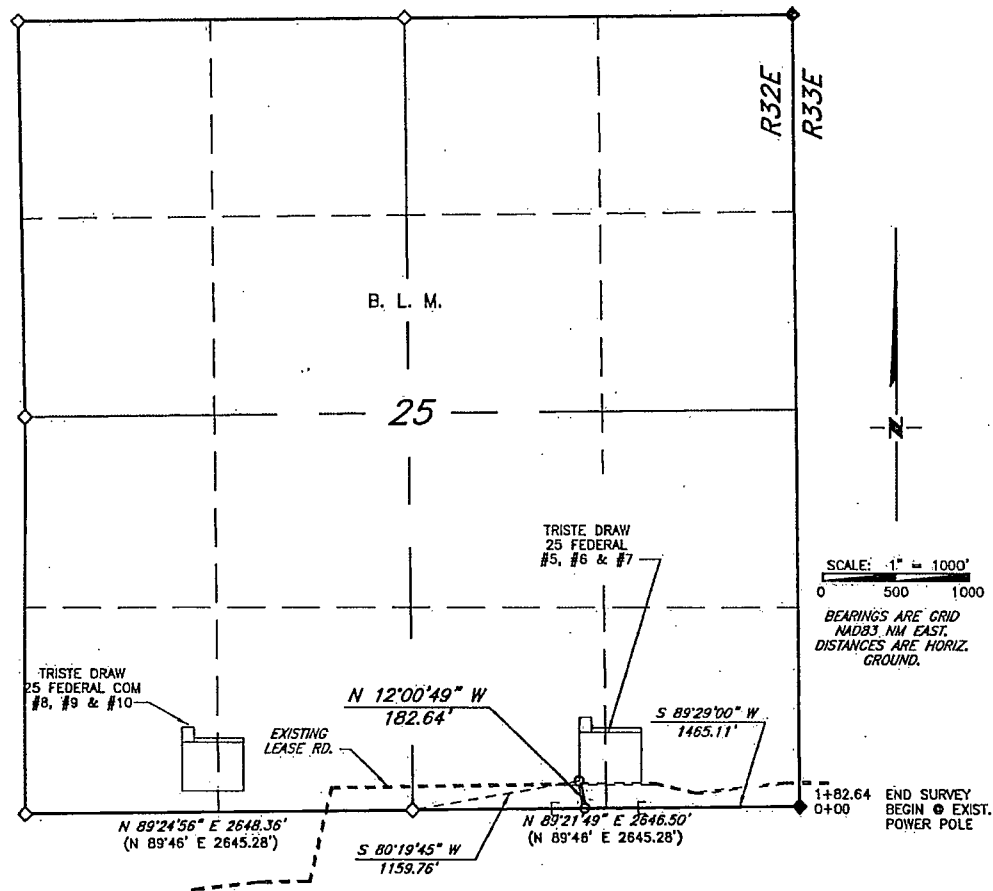


3801 Doris Lane, Round Rock, Texas 78664 | Firm No.: TX 10193838 NM 4655451 | (512) 992-2087

SCALE: 1" = 1000'
DATE: 12/18/13
SURVEYED BY: GB/IE
DRAWN BY: LWB
APPROVED BY: LWB
SHEET: 1 OF 1

Exhibit G

CIMAREX ENERGY COMPANY
ELECTRIC LINE EASEMENT TO TRISTE DRAW 25 FEDERAL #5, #6 & #7
SEC. 25, T23S, R32E, N.M.P.M., LEA CO., N.M.



DESCRIPTION

A strip of land, 30 feet in width, being 182.64 feet or 11.069 rods in length situated in Section 25, Township 23 South, Range 32 East, N. M. P. M., Lea County, New Mexico being 15 feet left and 15 feet right of the following described survey of centerline across the land of the B. L. M.:

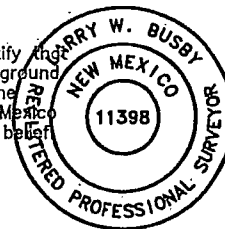
Beginning at a point, an existing power pole, which lies S 89°29'00\" W, 1465.11 feet from a brass cap stamped "1913" found for the Southeast of the aforementioned Section 25;

Thence N 12°00'49\" W, 182.64 feet to the end of the survey from which a brass cap stamped "1916" found for the South quarter corner of the above-mentioned Section 25 bears S 80°19'45\" W, 1159.76 feet.

Said tract of land containing 0.126 acre, more or less, all within the SW 1/4 SE 1/4 of said Section 25.

I, Larry W. Busby, a N. M. Professional Surveyor, hereby certify that this plat was prepared from an actual survey made on the ground under my direct supervision and the survey and plat meet the Minimum Standards for Land Surveying in the State of New Mexico and are true and correct to the best of my knowledge and belief.

Larry W. Busby
 NM PS 11398



Copyright 2013 - All Rights Reserved

- LEGEND**
- () RECORD DATA - GLO
 - ◇ FOUND BRASS CAP STAMPED "1916"
 - ◆ FOUND BRASS CAP STAMPED "1913"

NO.	REVISION	DATE
JOB NO.:	LS130530	
DWG. NO.:	130530PR1	

PROSPERITY CONSULTANTS, LLC



3801 Doris Lane, Round Rock, Texas 78664 | Firm No.: TX 10193838 NM 4655451 | (512) 992-2087

SCALE: 1" = 1000'
 DATE: 12/18/13
 SURVEYED BY: GB/IE
 DRAWN BY: LWB
 APPROVED BY: LWB
 SHEET : 1 OF 1

Exhibit H

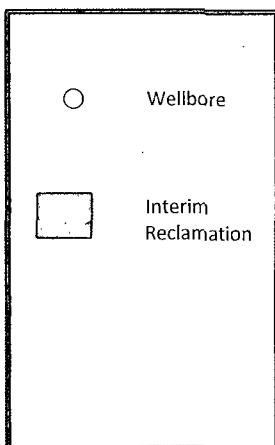
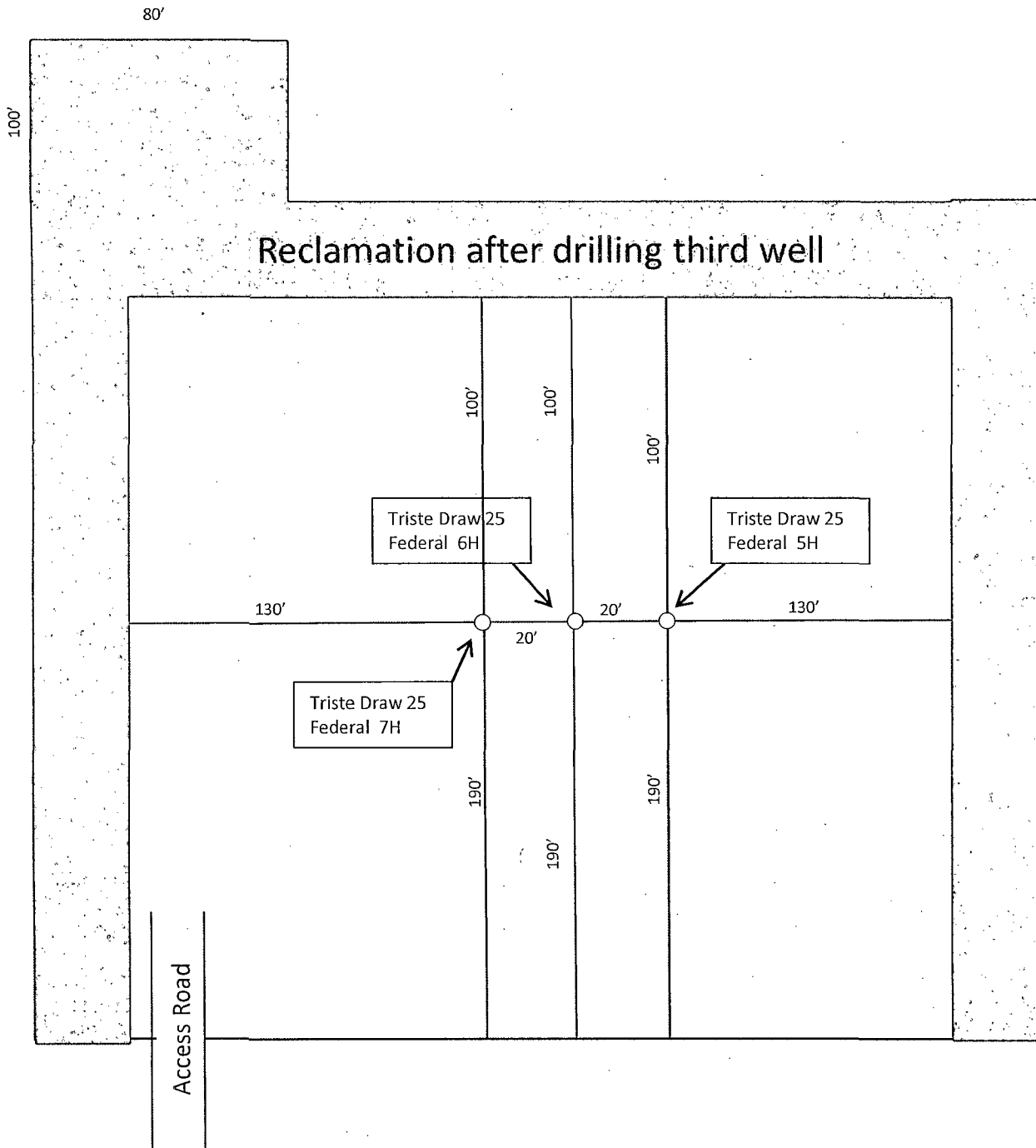


Exhibit D-1
Interim Reclamation Diagram
Triste Draw 25 Federal 7H
Cimarex Energy Co.
25-23S-32E
SHL 370 FSL & 1310 FEL
BHL 330 FNL & 2200 FEL
Lea County, NM