

District I
1625 N. French Dr., Hobbs, NM 88240
Phone: (575) 393-6161 Fax: (575) 393-0720
District II
811 S. First St., Artesia, NM 88210
Phone: (575) 748-1283 Fax: (575) 748-9720
District III
1000 Rio Brazos Road, Aztec, NM 87410
Phone: (505) 334-6178 Fax: (505) 334-6170
District IV
1220 S. St. Francis Dr., Santa Fe, NM 87505
Phone: (505) 476-3460 Fax: (505) 476-3462

State of New Mexico
Energy, Minerals & Natural Resources Department
OIL CONSERVATION DIVISION
1220 South St. Francis Dr.
Santa Fe, NM 87505

HOBBS OCD

SEP 22 2014

Form C-102

Revised August 1, 2011

Submit one copy to appropriate

District Office

RECEIVED

☐ AMENDED REPORT

WELL LOCATION AND ACREAGE DEDICATION PLAT

¹ API Number 30-024-42137	² Pool Code 97922	³ Pool Name WC-025 G-06 S223421L; B5
⁴ Property Code 30864	⁵ Property Name GAUCHO 21 FEDERAL	
⁷ OGRID No. 6137	⁶ Well Number 4H	
	⁸ Operator Name DEVON ENERGY PRODUCTION COMPANY, L.P.	⁹ Elevation 3432.2

¹⁰ Surface Location

UL or lot no.	Section	Township	Range	Lot Idn	Feet from the	North/South line	Feet from the	East/West line	County
N	21	22 S	34 E		200	SOUTH	1500	WEST	LEA

¹¹ Bottom Hole Location If Different From Surface

UL or lot no.	Section	Township	Range	Lot Idn	Feet from the	North/South line	Feet from the	East/West line	County
C	21	22 S	34 E		330	NORTH	1980	WEST	LEA

¹² Dedicated Acres	¹³ Joint or Infill	¹⁴ Consolidation Code	¹⁵ Order No.
160			

No allowable will be assigned to this completion until all interests have been consolidated or a non-standard unit has been approved by the division.

<p>N89°24'04"E 2638.76 FT</p> <p>N O CORNER SEC. 21 LAT. = 32.3844614°N LONG. = 103.4749979°W</p> <p>NW CORNER SEC. 21 LAT. = 32.3844435°N LONG. = 103.4835441°W</p> <p>NMSP EAST (FT) N = 504634.03 E = 803661.09</p> <p>1980'</p> <p>330'</p> <p>BOTTOM OF HOLE</p> <p>BOTTOM OF HOLE LAT. = 32.3835513°N LONG. = 103.4771324°W</p> <p>NMSP EAST (FT) N = 504325.23 E = 805642.98</p> <p>W O CORNER SEC. 21 LAT. = 32.3771852°N LONG. = 103.4835548°W</p> <p>NMSP EAST (FT) N = 501993.36 E = 803678.74</p> <p>GAUCHO "21" FEDERAL #4H ELEV. = 3432.2' LAT. = 32.3704748°N (NAD83) LONG. = 103.4787415°W</p> <p>NMSP EAST (FT) N = 499563.92 E = 805184.26</p> <p>SW CORNER SEC. 21 LAT. = 32.3699343°N LONG. = 103.4836025°W</p> <p>NMSP EAST (FT) N = 499355.33 E = 803684.98</p> <p>1500'</p> <p>S89°40'20"W 2651.01 FT</p> <p>2641.19 FT</p> <p>2638.49 FT</p> <p>2651.62 FT</p> <p>N89°40'23"E</p> <p>NE CORNER SEC. 21 LAT. = 32.3844443°N LONG. = 103.4664102°W</p> <p>NMSP EAST (FT) N = 504676.74 E = 808950.37</p> <p>NOTE: LATITUDE AND LONGITUDE COORDINATES ARE SHOWN USING THE NORTH AMERICAN DATUM OF 1983 (NAD83). LISTED NEW MEXICO STATE PLANE EAST COORDINATES ARE GRID (NAD83). BASIS OF BEARING AND DISTANCES USED ARE NEW MEXICO STATE PLANE EAST COORDINATES MODIFIED TO THE SURFACE.</p> <p>S O CORNER SEC. 21 LAT. = 32.3699178°N LONG. = 103.4750181°W</p> <p>NMSP EAST (FT) N = 499370.49 E = 806335.49</p> <p>200'</p> <p>SURFACE LOCATION</p> <p>DNF</p>		<p>¹⁷ OPERATOR CERTIFICATION</p> <p>I hereby certify that the information contained herein is true and complete to the best of my knowledge and belief, and that this organization either owns a working interest or released mineral interest in the land including the proposed bottom hole location or has a right to drill this well at this location pursuant to a contract with an owner of such a mineral or working interest, or to a voluntary pooling agreement or a compulsory pooling order heretofore entered by the division.</p> <p><i>[Signature]</i> 2/26/2014 Signature Date</p> <p>David H. Cook Regulatory Specialist Printed Name</p> <p>david.cook@dvn.com E-mail Address</p> <p>¹⁸ SURVEYOR CERTIFICATION</p> <p>I hereby certify that the well location shown on this plat was plotted from field notes of actual surveys made by me and under my supervision, and that the same is true and correct to the best of my belief.</p> <p><i>[Signature]</i> 12/19/13 Date of Survey</p> <p><i>[Signature]</i> Signature and Seal of Professional Surveyor</p> <p>Certificate Number: FILIMON F. JARAMILLO, PLS 12797 SURVEY NO. 2120A</p>
---	--	--

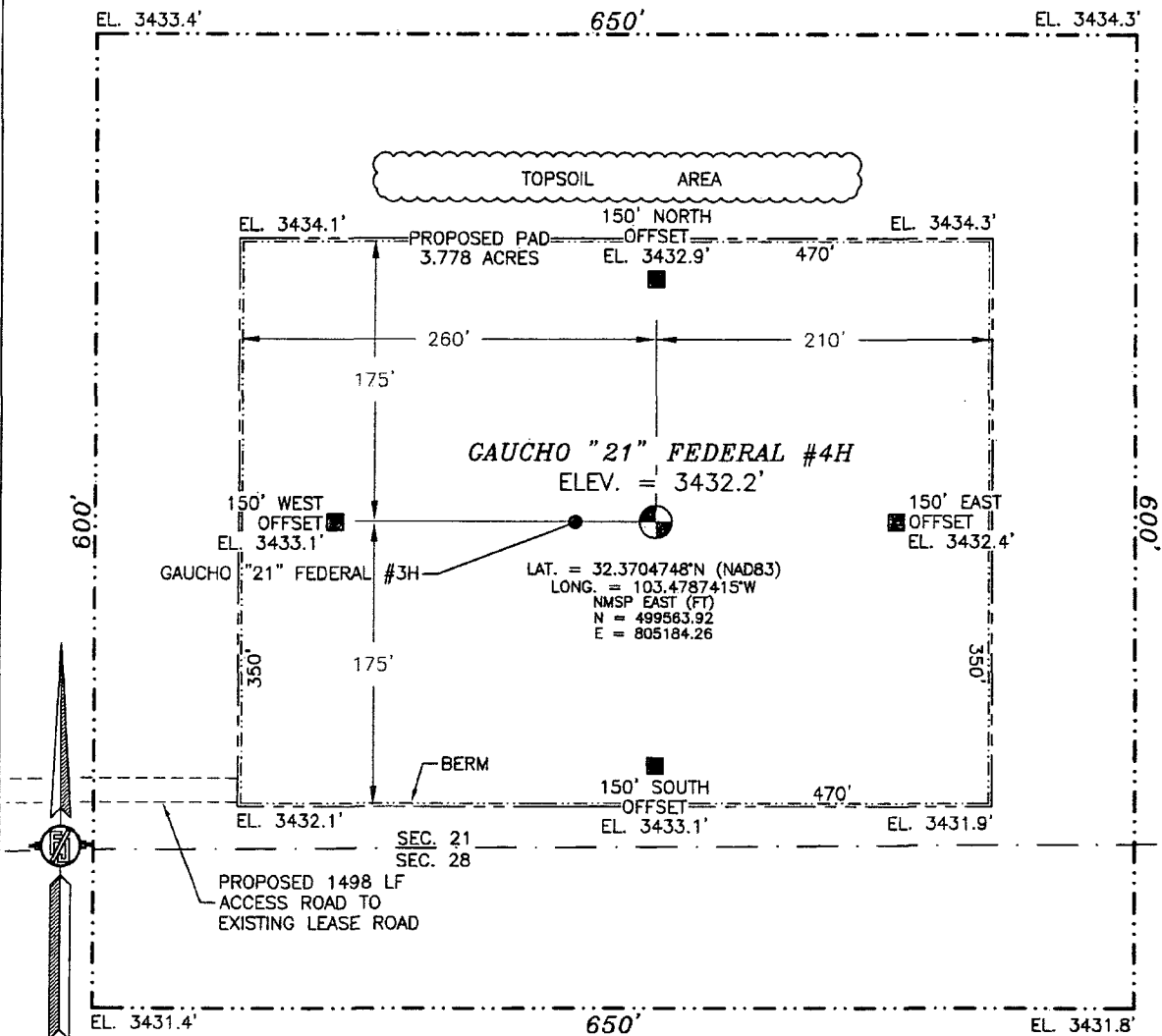
PP: 200 FSL & 1980 FWL

pm.

SECTION 21, TOWNSHIP 22 SOUTH, RANGE 34 EAST, N.M.P.M.
LEA COUNTY, STATE OF NEW MEXICO

SITE MAP

NOTE: LATITUDE AND LONGITUDE COORDINATES ARE SHOWN USING THE NORTH AMERICAN DATUM OF 1983 (NAD83). LISTED NEW MEXICO STATE PLANE EAST COORDINATES ARE GRID (NAD83). BASIS OF BEARING AND DISTANCES USED ARE NEW MEXICO STATE PLANE EAST COORDINATES MODIFIED TO THE SURFACE



010 50 100 200

SCALE 1" = 100'

DIRECTIONS TO LOCATION

FROM THE INTERSECTION OF STATE HIGHWAY 128 AND DELAWARE BASIN ROAD GO NORTH AND EAST APPROX. 9.5 MILES TO LEASE ROAD ON LEFT (NORTH) TURN NORTH GO APPROX. 3.6 MILES TO A LEASE ROAD ON RIGHT (EAST) TURN EAST GO APPROX. 0.6 MILES TO LEASE ROAD ON RIGHT (SOUTH) TURN SOUTH GO APPROX. 0.25 MILES TO A ROAD LATH WITH RED AND WHITE FLAGGING, FOLLOW LATHS FOR 0.1 MILES TO A PI LEFT ROAD LATH WITH RED AND WHITE FLAGGING, TURN LEFT (EAST) GO EAST APPROX. 0.2 MILES TO LOCATION.

DEVON ENERGY PRODUCTION COMPANY, L.P.

GAUCHO "21" FEDERAL #4H

LOCATED 200 FT. FROM THE SOUTH LINE

AND 1500 FT. FROM THE WEST LINE OF

SECTION 21, TOWNSHIP 22 SOUTH,

RANGE 34 EAST, N.M.P.M.

LEA COUNTY, STATE OF NEW MEXICO

JULY 31, 2013

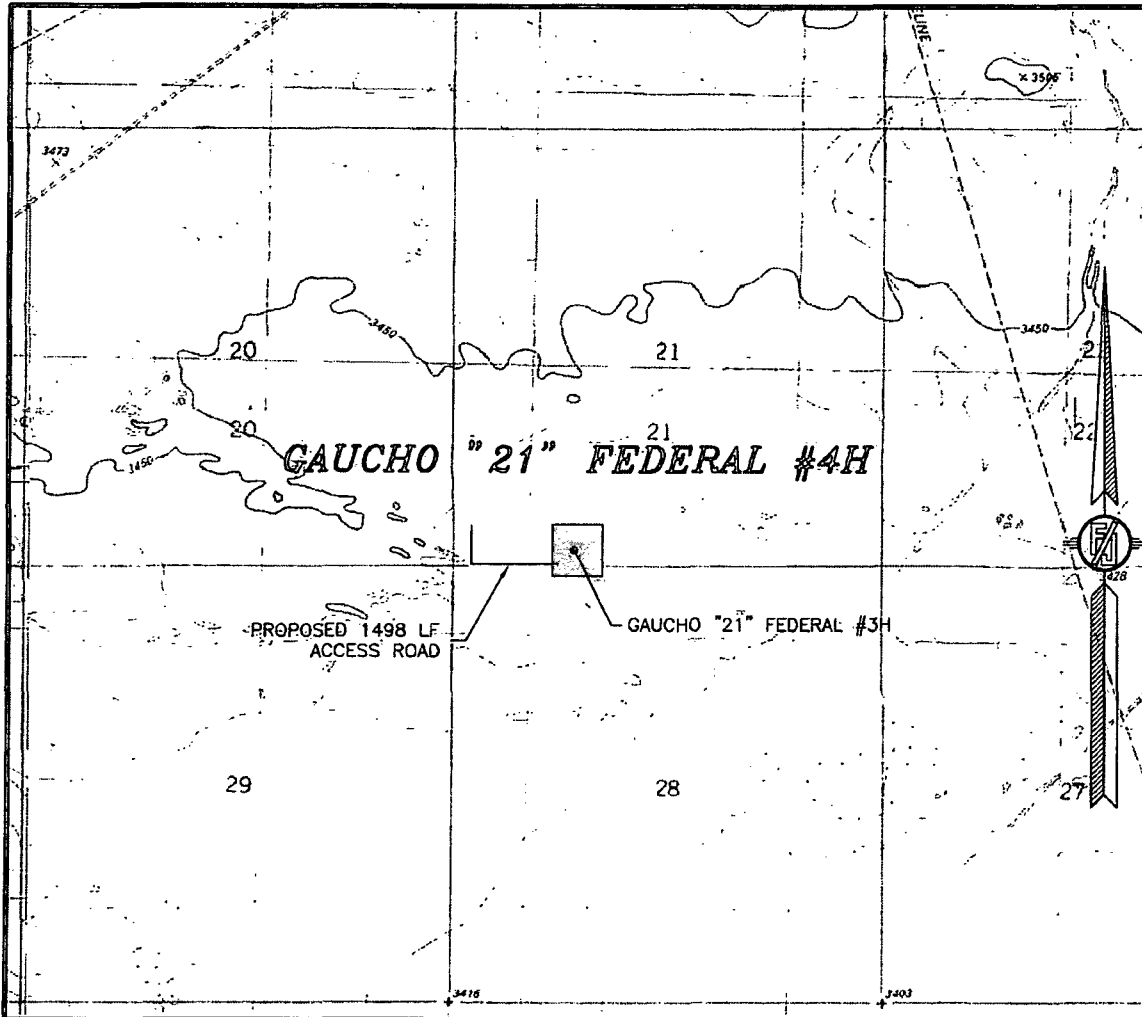
SURVEY NO. 2120A

MADRON SURVEYING, INC.

301 SOUTH CANAL
(575) 234-3341

CARLSBAD, NEW MEXICO

SECTION 21, TOWNSHIP 22 SOUTH, RANGE 34 EAST, N.M.P.M.
LEA COUNTY, STATE OF NEW MEXICO
LOCATION VERIFICATION MAP



USGS QUAD MAP:
SAN SIMON RANCH

NOT TO SCALE

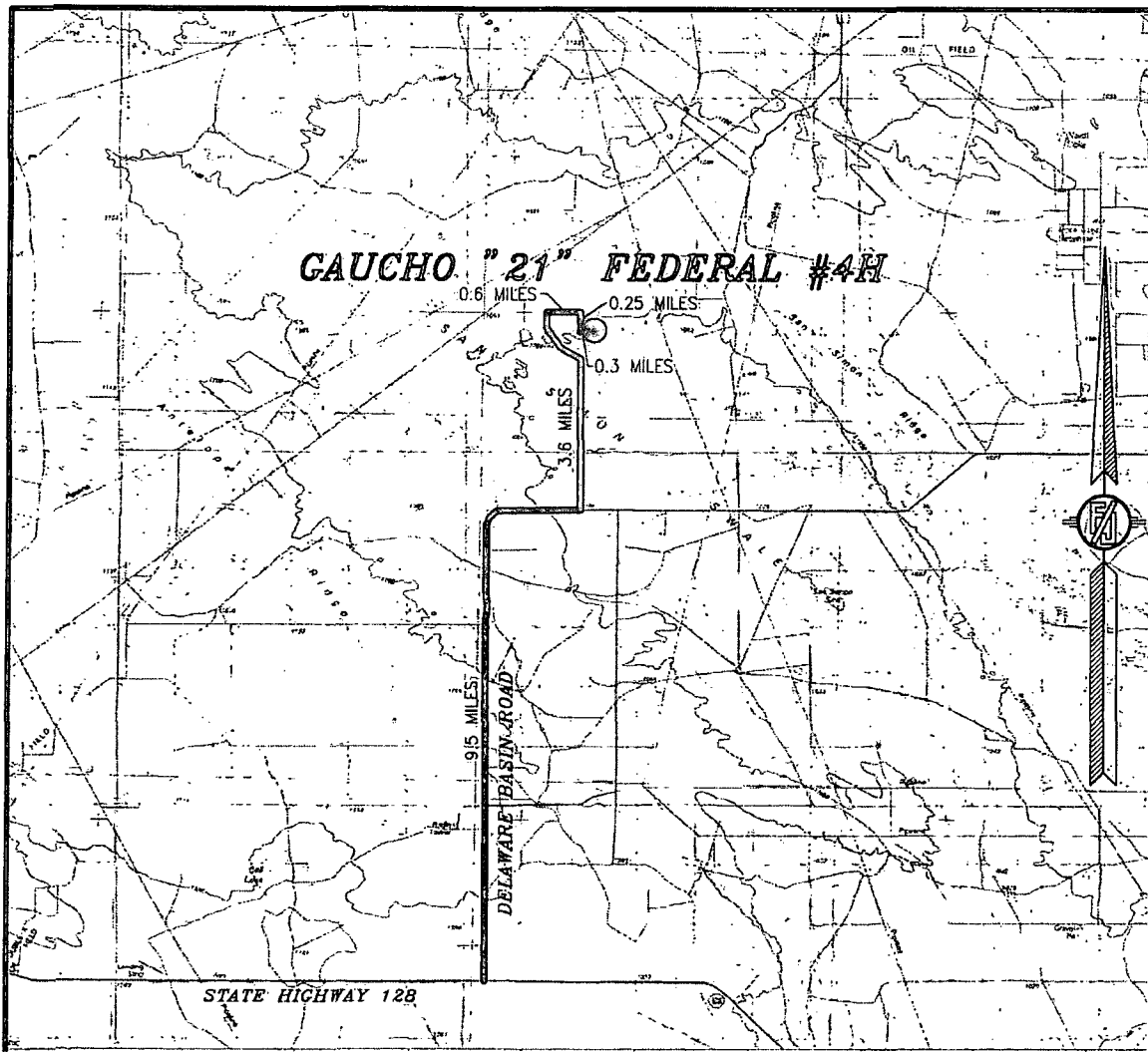
DEVON ENERGY PRODUCTION COMPANY, L.P.
GAUCHO "21" FEDERAL #4H
LOCATED 200 FT. FROM THE SOUTH LINE
AND 1500 FT. FROM THE WEST LINE OF
SECTION 21, TOWNSHIP 22 SOUTH,
RANGE 34 EAST, N.M.P.M.
LEA COUNTY, STATE OF NEW MEXICO

JULY 31, 2013

SURVEY NO. 2120A

MADRON SURVEYING, INC. 301 SOUTH CANAL (575) 234-3341 CARLSBAD, NEW MEXICO

SECTION 21, TOWNSHIP 22 SOUTH, RANGE 34 EAST, N.M.P.M.
LEA COUNTY, STATE OF NEW MEXICO
VICINITY MAP



NOT TO SCALE

DEVON ENERGY PRODUCTION COMPANY, L.P.

GAUCHO "21" FEDERAL #4H

LOCATED 200 FT. FROM THE SOUTH LINE
AND 1500 FT. FROM THE WEST LINE OF
SECTION 21, TOWNSHIP 22 SOUTH,
RANGE 34 EAST, N.M.P.M.
LEA COUNTY, STATE OF NEW MEXICO

JULY 31, 2013

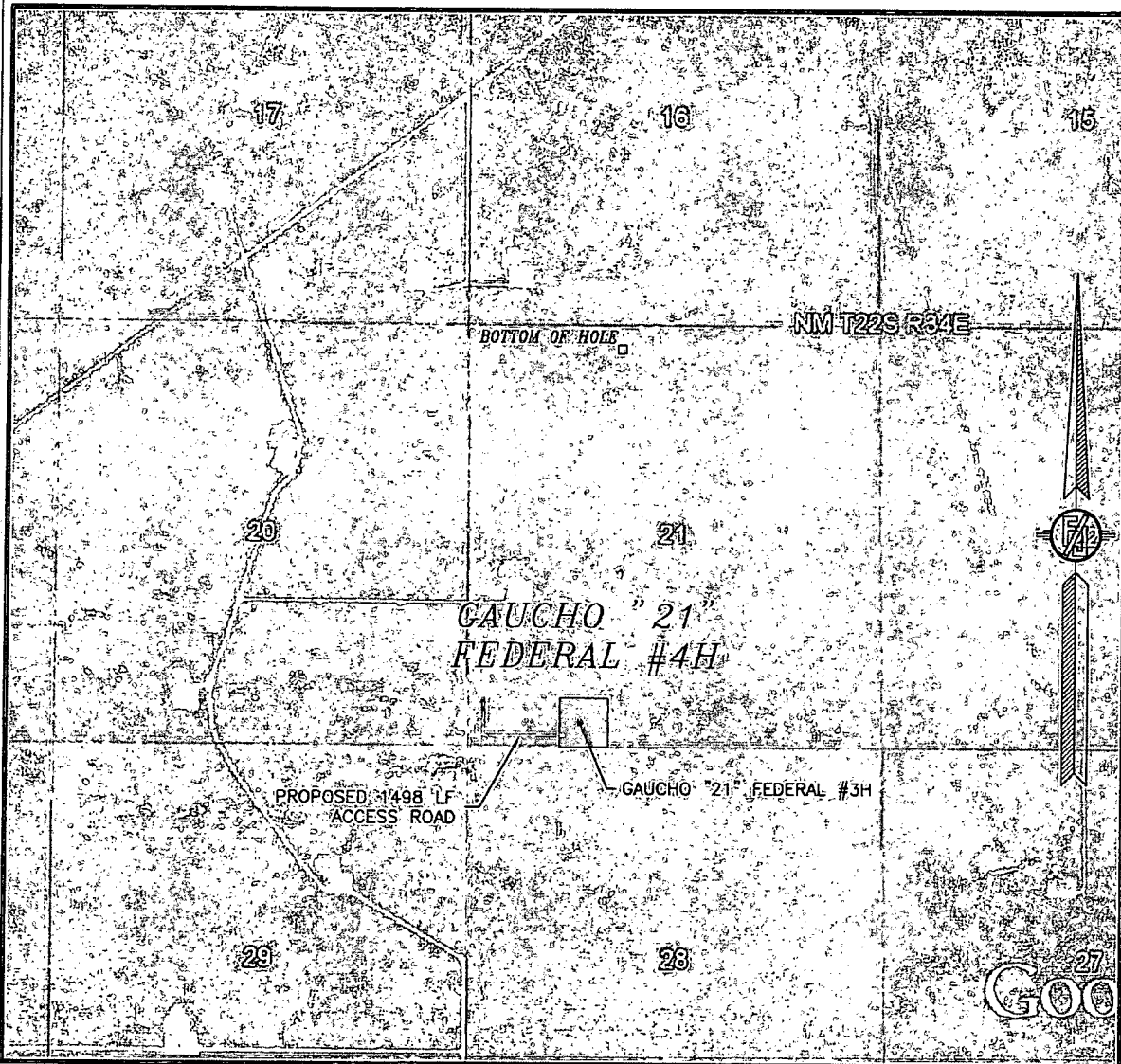
DIRECTIONS TO LOCATION

FROM THE INTERSECTION OF STATE HIGHWAY 128 AND DELAWARE BASIN ROAD GO NORTH AND EAST APPROX. 9.5 MILES TO LEASE ROAD ON LEFT (NORTH) TURN NORTH GO APPROX. 3.6 MILES TO A LEASE ROAD ON RIGHT (EAST) TURN EAST GO APPROX. 0.8 MILES TO LEASE ROAD ON RIGHT (SOUTH) TURN SOUTH GO APPROX. 0.25 MILES TO A ROAD LATH WITH RED AND WHITE FLAGGING, FOLLOW LATHS FOR 0.1 MILES TO A PI LEFT ROAD LATH WITH RED AND WHITE FLAGGING, TURN LEFT (EAST) GO EAST APPROX. 0.2 MILES TO LOCATION.

SURVEY NO. 2120A

MADRON SURVEYING, INC. 301 SOUTH CANAL (575) 234-3341 CARLSBAD, NEW MEXICO

SECTION 21, TOWNSHIP 22 SOUTH, RANGE 34 EAST, N.M.P.M.
LEA COUNTY, STATE OF NEW MEXICO
AERIAL PHOTO



NOT TO SCALE
AERIAL PHOTO:
GOOGLE EARTH
MARCH 2012

DEVON ENERGY PRODUCTION COMPANY, L.P.

GAUCHO "21" FEDERAL #4H

LOCATED 200 FT. FROM THE SOUTH LINE
AND 1500 FT. FROM THE WEST LINE OF
SECTION 21, TOWNSHIP 22 SOUTH,
RANGE 34 EAST, N.M.P.M.
LEA COUNTY, STATE OF NEW MEXICO

JULY 31, 2013

SURVEY NO. 2120A

MADRON SURVEYING, INC. 301 SOUTH CANAL (575) 234-3341 CARLSBAD, NEW MEXICO

