

Submit 1 Copy To Appropriate District Office
District I - (575) 393-6161
1625 N. French Dr., Hobbs, NM 88240
District II - (575) 748-1283
811 S. First St., Artesia, NM 88210
District III - (505) 334-6178
1000 Rio Brazos Rd., Aztec, NM 87410
District IV - (505) 476-3460
1220 S. St. Francis Dr., Santa Fe, NM 87505

State of New Mexico
Energy, Minerals and Natural Resources

Form C-103
Revised August 1, 2011

OIL CONSERVATION DIVISION
1220 South St. Francis Dr.
Santa Fe, NM 87505

WELL API NO: 30-025-31489
5. Indicate Type of Lease STATE <input checked="" type="checkbox"/> FEE <input type="checkbox"/>
6. State Oil & Gas Lease No.
7. Lease Name or Unit Agreement Name WEST DOLLARHIDE DRINKARD UNIT
8. Well Number 122
9. OGRID Number 4323
10. Pool name or Wildcat Dollarhide Tubb Drinkard

SUNDRY NOTICES AND REPORTS ON WELLS
(DO NOT USE THIS FORM FOR PROPOSALS TO DRILL OR TO DEEPEN OR PLUG BACK TO A DIFFERENT RESERVOIR. USE "APPLICATION FOR PERMIT" (FORM C-101) FOR SUCH PROPOSALS.)

1. Type of Well: Oil Well ☐ Gas Well ☒ Other Injector **HOBBS OCD**

2. Name of Operator
CHEVRON U.S.A. INC. **SEP 29 2014**

3. Address of Operator
15 SMITH ROAD, MIDLAND TEXAS 79705

4. Well Location **RECEIVED**

Unit Letter K : 2055 feet from the South line and 1981 feet from the West line
Section 32 Township 24S Range 38E NMPM County LEA

11. Elevation (Show whether DR, RKB, RT, GR, etc.)

12. Check Appropriate Box to Indicate Nature of Notice, Report or Other Data

NOTICE OF INTENTION TO:

PERFORM REMEDIAL WORK ☐ PLUG AND ABANDON ☐
TEMPORARILY ABANDON ☐ CHANGE PLANS ☐
PULL OR ALTER CASING ☐ MULTIPLE COMPL ☐
DOWNHOLE COMMINGLE ☐

SUBSEQUENT REPORT OF:

REMEDIAL WORK ☐ ALTERING CASING ☐
COMMENCE DRILLING OPNS. ☐ P AND A ☐
CASING/CEMENT JOB ☐

OTHER:

OTHER: cleanout, acidize & return to injection

13. Describe proposed or completed operations. (Clearly state all pertinent details, and give pertinent dates, including estimated date of starting any proposed work). SEE RULE 19.15.7.14 NMAC. For Multiple Completions: Attach wellbore diagram of proposed completion or recompletion.

Please see attached reports for work done on 7/26/14-.8/23/14

An MIT test was performed on 9/2/14. The well was tested at 600 PSI for 30 minutes.
Please find attached the original and a copy of the chart.

Test date- 9/2/14, BWPD 95, Inj Pressure- 1125

Spud Date:

Rig Release Date:

I hereby certify that the information above is true and complete to the best of my knowledge and belief.

SIGNATURE Britany Cortez TITLE PERMIT SPECIALIST

DATE 09/04/2014

Type or print name Brittany Cortez

E-mail address: Bcortez@chevron.com

PHONE: 432-687-7415

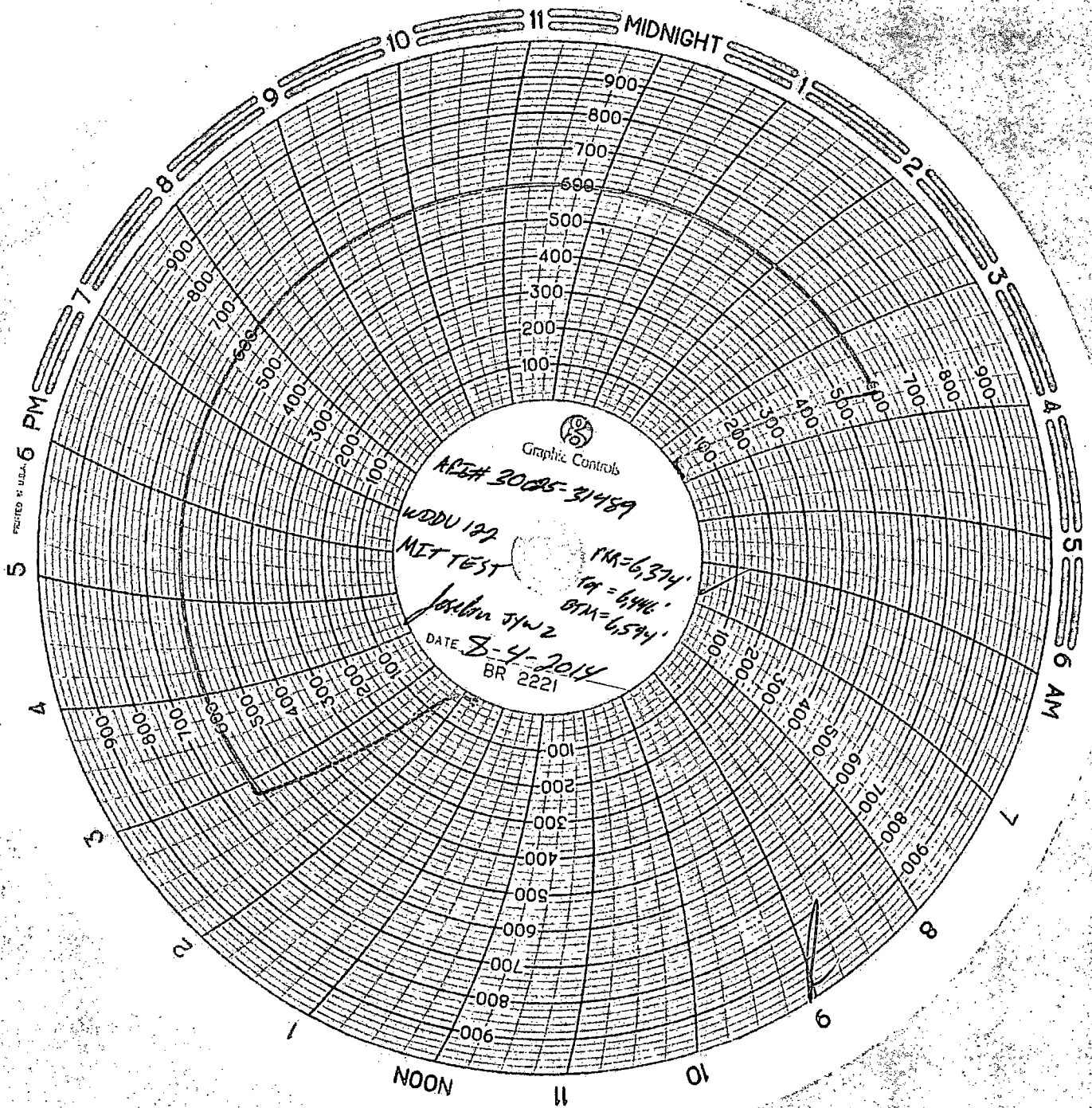
For State Use Only

APPROVED BY: Mary Brown TITLE Dist Supervisor

DATE 9/29/2014

Conditions of Approval (if any):

SEP 29 2014





Summary Report

Major Rig Work Over (MRWO)

Clean-Out

Job Start Date: 7/26/2014

Job End Date: 8/23/2014

Well Name WEST DOLLARHIDE DRINKARD UNIT 122	Lease West Dollarhide Drinkard Unit	Field Name Dollarhide - Primary	Business Unit Mid-Continent
Ground Elevation (ft)	Original RKB (ft)	Current RKB Elevation	Mud Line Elevation (ft) Water Depth (ft)

Report Start Date: 7/26/2014

Com

Move rig, rev unit & all tks and equip

TGSM for RU

Spotted in rig, rev unit, and tanks

Crew traveled home

Inactive

Report Start Date: 7/27/2014

Com

Inactive

Report Start Date: 7/28/2014

Com

Inactive

Crew traveled to location

Held TGSM, Reviewed JSA, Hazard of the Day, E-colors. Safety focus of the Day.

RU Derrick

MIRU Precision Pressure Data. Rih w/ 6" 1.55 GR, 4' 1.5" Spang jar, 8' 1.5" WB to 6355' - all clear. Pooh, LD GR, MU 6" C1 1.18" running tool, 9" 1.50 Baker FWP to 6355' and inserted plug into Pkr. Dropped spang jar on it. Pressured up to 500 psi. Pooh. RDMO PPD.

Unload, rack, and tally (232) jts 2.875" L80 WS.

Crew took lunch

ND WH. NU BOPE

Tst BOPE 250/620 psi - Tst good.

Unlatch from PKR. Circ 130 bls 9.9# BW. Install Stripping head. SIW, Debrief crew, SDON.

Crew traveled home

Inactive

Report Start Date: 7/29/2014

Com

NO ACTIVITY TAKING PLACE ON WELL SITE.

CREW TRAVEL FROM YARD TO LOCATION.

REVIEWED CREW'S JSA AND PERFORMED DAILY SAFETY MEETING, WALK AROUND, AND RIG VISUAL INSPECTION. SWA-SWP-TENET#9 AND HAZARD WHEEL DISCUSSED.

WAITED ON PRECISION PRESSURE DATA (SLICKLINE) THEY WERE CALLED YESTERDAY AND REQUESTED FOR FIRST THING TUESDAY MORNING.

JSA TGSM TO REVIEW EACH JOB TASK. COMMUNICATED AND DISCUSSED POTENTIAL HAZARDS AND RISKS ASSOCIATED WITH EACH STEP. REVIEWED SWP & PROCEDURES NEED TO BE TAKEN TO HELP ELIMINATED THE RISK AND TO PERFORM THE TASK IFO (RU-RD SLICKLINE, KILLING WELL, POOH-RIH WITH TBG)

SPOT IN AND RIG UP SLICKLINE EQUIPMENT.

INSTALL SLICKLINE LUBRICATOR AND PRESSURE TEST TO 1.500PSI "HELD"

RIH WITH SLICKLINE PRONG AND EQUALIZED PRESSURE FROM BELOW AND ABOVE PACKER / APPLIED 750 PSI ON TBG AND DROPPED TO 350 PSI AFTER DISC WAS RUPTURED / POOH AND RIH TO RETRIEVE 1.50F PROFILE PLUG "SUCCESSFULLY"

REMOVE ALL SLICKLINE EQUIPMENT FROM WELL.

INSTALLED TBG SWIVEL AND RELEASED PACKER WITH SOME SMALL ISSUES / AFTER RELEASING PACKER THE PRESSURE STILL REMAINED @ 350 PSI / OPENED CSG TO BLEED OFF PRESSURE AND POSSIBLY ALLOWING US TO POOH / AFTER 20 MINUTES MONITORING THE WELL, THE CSG WAS STILL SLIGHTLY RUNNING OVER AND WHEN TBG WAS OPENED IT WAS ALSO RUNNING OVER / DECISION WAS MADE TO PUMP MUD CAP.

WAITED FOR MUD

PUMPED 9 BBL'S 14.5# MUD WITH 1.5 BBL'S BEHIND / TBG WENT ON A SLIGHT VACUUM BUT THE CSG WAS STILL SLIGHTLY RUNNING OVER

STARTED TO POOH WITH 2 3/8" J55 IPC TBG FROM 6,380' AND LEAVING 3,270' OF KILL STRING IN THE WELL / PULLED 90- 2 3/8" J55 IPC JTS AND LEFT 103 / PACKER KEEPS GIVING US ISSUES WHILE POOH BUT WE THINK ITS THE ELEMENTS SWELLING UP SO WE ARE ALSO SWABBING THE WELL.

DEBRIEF WITH EVERYONE ON LOCATION THE IMPORTANCE OF STAYING HYDRATED AND COOL / WENT OVER THE SYMPTOMS OF

PU TOOLS AND EQUIPMENT / ISOLATE, SECURE AND SHUT IN WELL FOR THE NIGHT.

CREW TRAVEL TO LOCATION

NO ACTIVITY TAKING PLACE AT WELL SITE.

Report Start Date: 7/30/2014

Com

Inactive

Crew traveled to location

Held TGSM, Reviewed JSA, Hazard of the Day, E-colors, Safety focus of the Day.

h



Summary Report

Major Rig Work Over (MRWO)

Clean-Out

Job Start Date: 7/26/2014

Job End Date: 8/23/2014

Well Name WEST DOLLARHIDE DRINKARD UNIT 122	Lease West Dollarhide Drinkard Unit	Field Name Dollarhide - Primary	Business Unit Mid-Continent
Ground Elevation (ft)	Original RKB (ft)	Current RKB Elevation	Mud Line Elevation (ft) Water Depth (ft)

Com			
Caliper and inspect lift equipment. POOH RB (103) JTS 2.375" J55 IPC TBG F/3,270'. (2) 2.375" J55 IPC TBG 4' subs, (1) T2 on/off tool, (1) 5.5" AS1X PKR. (1) pump-out plug.			
Change out 2.375" pipe rams for 2.875" pipe rams. NU Enviro-pan, NU Strng head.			
Tst BOPE w/5.5" cup-type PKR. 250/500. Tst good.			
Crew took lunch			
MU, Tih (1) 4.5" Baker Bit. (1) XO 2.875 APC box, (1) XO 2.875" EUE box, (1) sub 2.875" EUE, (1) XO 2.875" EUE box, (1) XO 3.750 EUE, (1) 4.750" strng mill, (1) sub 3.825", (232) JTS 2.875" L80 WS. Tag fill at 6630'. Pulled up to 6433'. EOT: 6433".			
Crew traveled home			
Inactive			
Report Start Date: 7/31/2014			
Com			
NO ACTIVITY TAKING PLACE ON WELL SITE.			
CREW TRAVEL TO LOCATION FROM YARD.			
JSA TGSM TO DISCUSS THE DAYS JOB TASK. COMMUNICATED HAZARDS ASSOCIATED WITH POOH-RIH WITH TBG, PRESSURE, H2S GAS, PINCH POINTS AND RESTRICTED AREAS. SWA-SWP-TENET#1 AND HAZARD WHEEL REVIEWED.			
BAD WEATHER AROUND THIS AREA SO WE WAITED FOR IT TO PASS BY. LIGHTNING, THUNDER AND STRONG WINDS WERE ENCOUNTERED.			
TBG & CSG BOTH RECORDED 300 PSI / BLED OFF PRESSURE AND CIRCULATED 150 BBL'S 10# BRINE FROM 6,433' TO SURFACE @ 2.5 BPM.			
CALIPER 2 7/8" TBG ELEVATORS / START POOH WITH 2 7/8" L-80 WS TBG AND C-O BHA FROM 6,433'			
LUNCH TIME.			
CONTINUE POOH WITH 2 7/8" L-80 WS TBG AND CO- BHA TO SURFACE.			
"CREW HAVING ISSUES WITH TBG TONGS"			
LD 4 3/4" STRING MILL, 4' x 2 7/8" L-80 TBG SUB, 4 1/2" MT BIT / WATER BREAK.			
RIH WITH 5 1/2"-14-20# AS1-X PKR WITH PUMP OUT PLUG, T2 ON-OFF TOOL AND 2 7/8" PERF SUB ON 2 7/8" L-80 WS TBG FROM SURFACE TO 6,374' (WORK STRING TBG TALLEY)			
" CREW HAVING ISSUES WITH TBG TONGS"			
SET 5 1/2" 14-20# AS1-X PKR W/ PUMP OUT PLUG, W/ CARBIDE SLIPS, HSN ELEMENTS, NICKLE PLATED OD, PLASTIC COATED ID @ 6,374' (18" KB INCLUDED)			
RELEASED ON-OFF TOOL / LOADED WELL WITH 10# BRINE / PRESSURED UP WELL TO 650 PSI FOR 20 MINUTES "HELD" / BLED OFF PRESSURE.			
CIRCULATED WELL WITH 150 BBL'S OF PACKER FLUID @ 2.5 BPM TO REDUCE FOAMING ACTION.			
PU TOOLS AND EQUIPMENT / ISOLATE, SECURE AND SHUT IN WELL FOR THE NIGHT.			
DEBRIEF WITH EVERYONE ON LOCATION THE VALUE BEHIND SWA. TODAY BEFORE STARTING WORK THE RIG CREW COMMUNICATED THAT LIGHTNING WAS AROUND THE AREA AND THAT IT WAS NOT SAFE TO INITIATE WORK. I AGREED AND WORK WAS HELD UP.			
CREW TRAVEL HOME.			
NO ACTIVITY TAKING PLACE ON WELL SITE.			
Report Start Date: 8/1/2014			
Com			
NO ACTIVITY TAKING PLACE ON WORK SITE.			
CREW TRAVEL FROM YARD TO LOCATION.			
JSA TGSM ON LAYING DOWN TBG, RESTRICTED AREAS, PINCH POINTS, WORKING IN HEIGHTS, POSSIBLE H2S GAS AND SUDDEN HIGH PRESSURE. HAZARDS WERE ADDRESSED AND COMMUNICATED WHILE ALSO REVIEWING SWP, TENET #1, HAZARD WHEEL, E-COLORS AND SWA.			
CALIPER 2 7/8" TBG ELEVATORS / ZERO PRESSURE ON WELL / POOH LAYING DOWN 2 7/8" L-80 WS TBG FROM 6,374' TO SURFACE.			
SHUT IN BLIND RAMS AND CHANGED 2 7/8" PIPE RAMS TO 2 3/8" PIPE RAMS / CHANGED OUT TBG SLIPS FROM 2 7/8" TO 2 3/8" / CHANGED TBG ELEVATORS FROM 2 7/8" TO 2 3/8" AND CALLIPERED.			
LUNCH TIME			
RIH WITH 5 1/2" CUP TYPE PACKER ON 2 3/8" JT / LOADED CSG AND PRESSURE TESTED TO 300 PSI LOW AND 700 PSI HIGH / HELD SOLID FOR 10 MINUTES, BLED OFF PRESSURE AND POOH.			
RIH WITH T2 ON-OFF TOOL WITH 1.50 F SS PROFILE NIPPLE > 192- 2 3/8" J55 IPC TK15 JTS > 4', 8, 10' 2 3/8" J55 IPC TK15 TBG SUBS > 1- 2 3/8" J55 IPC TK15 JT / SET PACKER @ 6,374' WITH 9,000# COMPRESSION.			
LOADED CSG WITH 3-4 BBL'S AND PRESSURE TESTED TO 620 PSI WHILE MONITORING FOR 20 MINUTES "HELD" / BLED OFF PRESSURE.			
REMOVE 7 1/16" x 5K BOP FROM WELL AND MOUNTED ON TRAILER.			
INSTALLED 7 1/16" x 3K IPC B1 FLANGE AND SECURED ONTO WELL HEAD WHILE LEAVING 9,000# COMPRESSION ON INJECTION PACKER.			
PU TOOLS AND EQUIPMENT / ISOLATE SECURE AND SHUT IN WELL FOR THE NIGHT.			
DEBRIEF WITH CREW MEMBERS ON A JOB WELL DONE AND ACHIEVING IFO.			
CREW TRAVEL HOME.			

h



Summary Report

Major Rig Work Over (MRWO)

Clean-Out

Job Start Date: 7/26/2014

Job End Date: 8/23/2014

Well Name WEST DOLLARHIDE DRINKARD UNIT 122	Lease West Dollarhide Drinkard Unit	Field Name Dollarhide - Primary	Business Unit Mid-Continent
Ground Elevation (ft)	Original RKB (ft)	Current RKB Elevation	Mud Line Elevation (ft) Water Depth (ft)

NO ACTIVITY TAKING PLACE AT WELL SITE.	Com
Report Start Date: 8/2/2014	
NO ACTIVITY TAKING PLACE ON LOCATION.	Com
Report Start Date: 8/3/2014	
NO ACTIVITY TAKING PLACE ON LOCATION.	Com
Report Start Date: 8/4/2014	
NO ACTIVITY TAKING PLACE AT WELL SITE.	Com
CREW TRAVEL TO LOCATION FROM YARD.	
JSA TGSM FOR THE DAYS JOB TASK / DISCUSSED HIGH PRESSURE LINES, STANDING IN LINE OF FIRE, POSSIBLE TRIPPING HAZARDS, RESTRICTED AREAS AND POINTED OUT EXCLUSION ZONES. COMMUNICATED SWA-SWP-HAZARD WHEEL AND TENET OF THE DAY.	
LOAD CSG AND PUT 300 PSI POSITIVE PRESSURE / PUMPED DOWN TBG AND PRESSURE TESTED TBG TO 1,000 PSI "HELD" / BURST PUMP OUT PLUG @ 2,100 PSI	
bled off pressure / PERFORMED NEW MEXICO MIT TEST FOR 30 MINUTES "SOLID" / BLED OFF PRESSURE.	
RD KEY 399 FROM WDDU 122 AND PREP TO MOVE TO WDDU 130.	
COMMUNICATE ROUTE BEING TAKEN TO NEXT LOCATION / MAKE SURE ALL EQUIPMENT IS PICKED UP AND SECURED ON RIG / PERFORM RIG MOVE CHECK LIST.	
NO ACTIVITY TAKING PLACE AT WELL SITE.	Com
Report Start Date: 8/5/2014	
No ops @ well	
RU petroplex acidizers	
Test Surface equipment to 6000 psi (Replaced 2" lo-torq vavle and retested good)	
Pressure up backside to 410 psi	
Catch pressure & line rate out w/ 10 bbls FW @ 3.5 BPM @ 2100 psi	
Switch to acid & pump 1 bbl 15% HCl acid @ 3.5 BPM @ 2400 psi.	
Wellhead started spraying/ leaking between the B-1 flange and the 2 3/8" collar below the master valve. We shut down the pumps and cleared the area. After we shut down the pumps, we had ~1200 psi on the tubing.	
Wait on slickline truck & pump truck to blow well down.	
Hook up pump truck to blow down line on acidizers iron and bleed well down into truck. Well had 650 psi on it and bled right off. The connection on the wellhead stopped leaking, but the well was still flowing.	
SI well, RD petroplex, RU Diamond D slickline	
Start wellsite remediation w/ oil gator today.	
RIH w/ 1.55" Gauge ring, tag SN @ 6347 slickline depth.	
POOH w/ gauge ring, RIH w/ 1.50" "F" profile plug & attempt to set plug.	
POOH & check for flow (well was still flowing and plug was still on the setting tool)	
RIH again w/ same profile plug, SI well & attempt to set plug again, shear off of plug, POOH w/ running tool, check for flow, well was dead	
RD Diamond D Slickline	
No ops @ well	Com
Report Start Date: 8/6/2014	
No ops @ well	
Blow down well. TP <100 psi gas only.	
Remove collar, nipple & master valve to inspect B-1.	
B-1 was corroded and found to be missing some threads, reinstall collar & SI well.	
Rig will have to move over to replace corroded B-1 flange.	
No ops @ well	Com
Report Start Date: 8/21/2014	
No operations @ well.	

[Handwritten signature]



Summary Report

Major Rig Work Over (MRWO)

Clean-Out

Job Start Date: 7/26/2014

Job End Date: 8/23/2014

Well Name WEST DOLLARHIDE DRINKARD UNIT 122	Lease West Dollarhide Drinkard Unit	Field Name Dollarhide - Primary	Business Unit Mid-Continent
Ground Elevation (ft)	Original RKB (ft)	Current RKB Elevation	Mud Line Elevation (ft) Water Depth (ft)

Com

JSA's and safety meeting. Discussed days operations of rigging up and replacing B-1 flange with new one. Talked about slickline operations and keeping good communication between crews.

Survey location. Set out all safety equipment. Rigged up pulling unit and set out all necessary tools.

Nipped down B-1 flange and removed it. Installed new B-1 flange with new nipple and master valve. Secured well and nipped up B-1 Flange. Pump truck got stuck on other job so job scope of retrieving profile plug will be in morning. Secured well and shut down. Debriefed with crew over days operations.

Crew travel to yard.

No operations @ well.

Report Start Date: 8/22/2014

Com

No operations @ well.

Crew travel to location

JSA's and safety meeting. Discussed days operations of RIH and retrieving blanking plug and rigging down pulling unit. Talked over keeping good communication with new operator.

Spotted in and rigged up slickline operations.

RIH with equalizer prong:

6" Rope Socket 1-1/4 OD

10' Weight Bar 1-3/8 OD

6' Short Spanges 1-1/4 OD

1' Equalizer Prong 1-3/8 OD

Prior to punching hole, placed 800 psi on tbg. Punched hole in profile plug. After hole was poked pressure was 650. Prepped to RIH and retrieve plug.

RIH with:

6" Rope Socket 1-1/4 OD

10" Weight bar 1-3/8 OD

1" JDC 1-1/2 OD

atch on to plug. POOH with retrieving tool and 1.50 profile plug.

Rigged down slickline operations. Secured well and debriefed with crew over operations.

Rigged down pulling unit. Loaded up all equipment and cleaned location prepped to move to new location.

No operations @ well.

Report Start Date: 8/23/2014

Com

No operations @ well.

JSA's and safety meeting. Discussed days operations of acidizing well with 8000 gallons of 15% acid. Talked about hazards and pin pointed shower trailer and muster point. Talked about emergency exit plans.

Rigged up all lines and equipment for acidizers. Mixed and rolled tank with 190 bbls of fresh water and acid.

Pressure tested lines up 6000 psi. Set pop off to 4800. Well had 800 psi once opened.

Started with fresh water to get injection and then switched to acid. Performed Acid Stimulation job over perms from 6446' - 6594'. Pumped 6,000 gal 15% NEFe HCl with FDAS.

Average rate was 5.2 bpm, max rate was 5.4 bpm, average PSI was 2850 psi, and max psi was 3300.

Tubing was flushed with 33 bbls of fresh water to bottom perf @ 6594'

ISIP=2001 psi

5 min SIP=1666 psi

10 min SIP=1634 psi

15 min SIP=1608 psi

Total load was 178 bbls.

Rigged down acidizers and debriefed with crew over days operations.

No operations @ well.

Handwritten signature