

District I
1625 N. French Dr., Hobbs, NM 88240
Phone: (575) 393-6161 Fax: (575) 393-0720
District II
811 S. First St., Artesia, NM 88210
Phone: (575) 748-1283 Fax: (575) 748-9720
District III
1000 Rio Brazos Road, Aztec, NM 87410
Phone: (505) 334-6178 Fax: (505) 334-6170
District IV
1220 S. St. Francis Dr., Santa Fe, NM 87505
Phone: (505) 476-3460 Fax: (505) 476-3462

State of New Mexico
Energy, Minerals & Natural Resources Department
HOBBS OGD
OIL CONSERVATION DIVISION
NOV 02 2014
1220 South St. Francis Dr.
Santa Fe, NM 87505

Form C-102
Revised August 1, 2011
Submit one copy to appropriate
District Office
☐ AMENDED REPORT

RECEIVED

WELL LOCATION AND ACREAGE DEDICATION PLAT

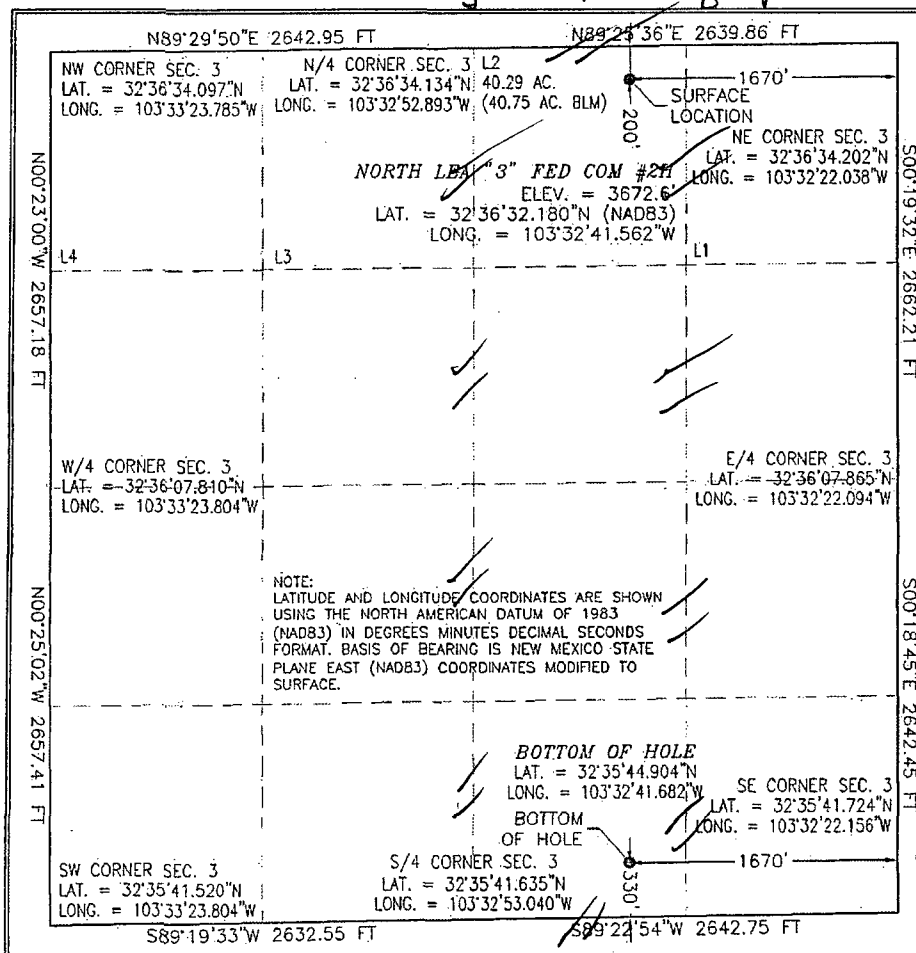
¹ API Number 30-025-42227	² Pool Code 50461	³ Pool Name Quail Ridge Lea Bone Spring South
⁴ Property Code 313633	⁵ Property Name NORTH LEA 3 FED COM	
⁶ OGRID No. 18917	⁸ Operator Name READ & STEVENS, INC.	⁷ Well Number 2H
		⁹ Elevation 3672.6

UL or lot no.	Section	Township	Range	Lot Idn	Feet from the	North/South line	Feet from the	East/West line	County
2 B	3	20 S	34 E		200	NORTH	1670	EAST	LEA

UL or lot no.	Section	Township	Range	Lot Idn	Feet from the	North/South line	Feet from the	East/West line	County
0	3	20 S	34 E		330	SOUTH	1670	EAST	LEA

¹² Dedicated Acres 160	¹³ Joint or Infill	¹⁴ Consolidation Code	¹⁵ Order No.
---------------------------------------------	-------------------------------	----------------------------------	-------------------------

No allowable will be assigned to this completion until all interests have been consolidated or a non-standard unit has been approved by the division. *red items inserted by direction of operator 7-10-14 email WWI 7-10-14*



¹⁷ OPERATOR CERTIFICATION	
I hereby certify that the information contained herein is true and complete to the best of my knowledge and belief, and that this organization either owns a working interest or unleased mineral interest in the land including the proposed bottom hole location or has a right to drill this well at this location pursuant to a contract with an owner of such a mineral or working interest, or to a voluntary pooling agreement or a compulsory pooling order heretofore entered by the division.	
<i>[Signature]</i>	1/23/2014 Date
Rory McMinn Printed Name	
rmcminn@read-stevens.com E-mail Address	
¹⁸ SURVEYOR CERTIFICATION	
I hereby certify that the well location shown on this plat was plotted from field notes of actual surveys made by me or under my supervision, and that the same is true and correct to the best of my belief.	
AUGUST 27, 2013 Date of Survey	
<i>[Signature]</i> Signature and Seal of Professional Surveyor	
Certificate Number: 2277 FILING E. ARAMILLO, PLS 12797 SURVEY NO. 1891	

NOV 04 2014 *Tm*

NOTE: LATITUDE AND LONGITUDE COORDINATES ARE SHOWN USING THE NORTH AMERICAN DATUM OF 1983 (NAD83) IN DEGREES, MINUTES AND DECIMAL SECONDS FORMAT. BASIS OF BEARING IS NEW MEXICO STATE PLANE EAST (NAD83) COORDINATES MODIFIED TO SURFACE.



FROM MILE MARKER #79 ON HWY 52-180 GO EAST ON HWY 62-180
APPROX. 0.7 MILES TO A LEASE ROAD ON RIGHT (SOUTH) TURN
SOUTH ON LEASE ROAD GO APPROX. 0.7 MILES ROAD TURNS RIGHT
(WEST) GO WEST APPROX. 0.2 MILES TO LEASE ROAD ON LEFT
(SOUTH) TURN SOUTH GO APPROX 0.1 MILES LOCATION ON LEFT SIDE
(EAST) OF LEASE ROAD 175'

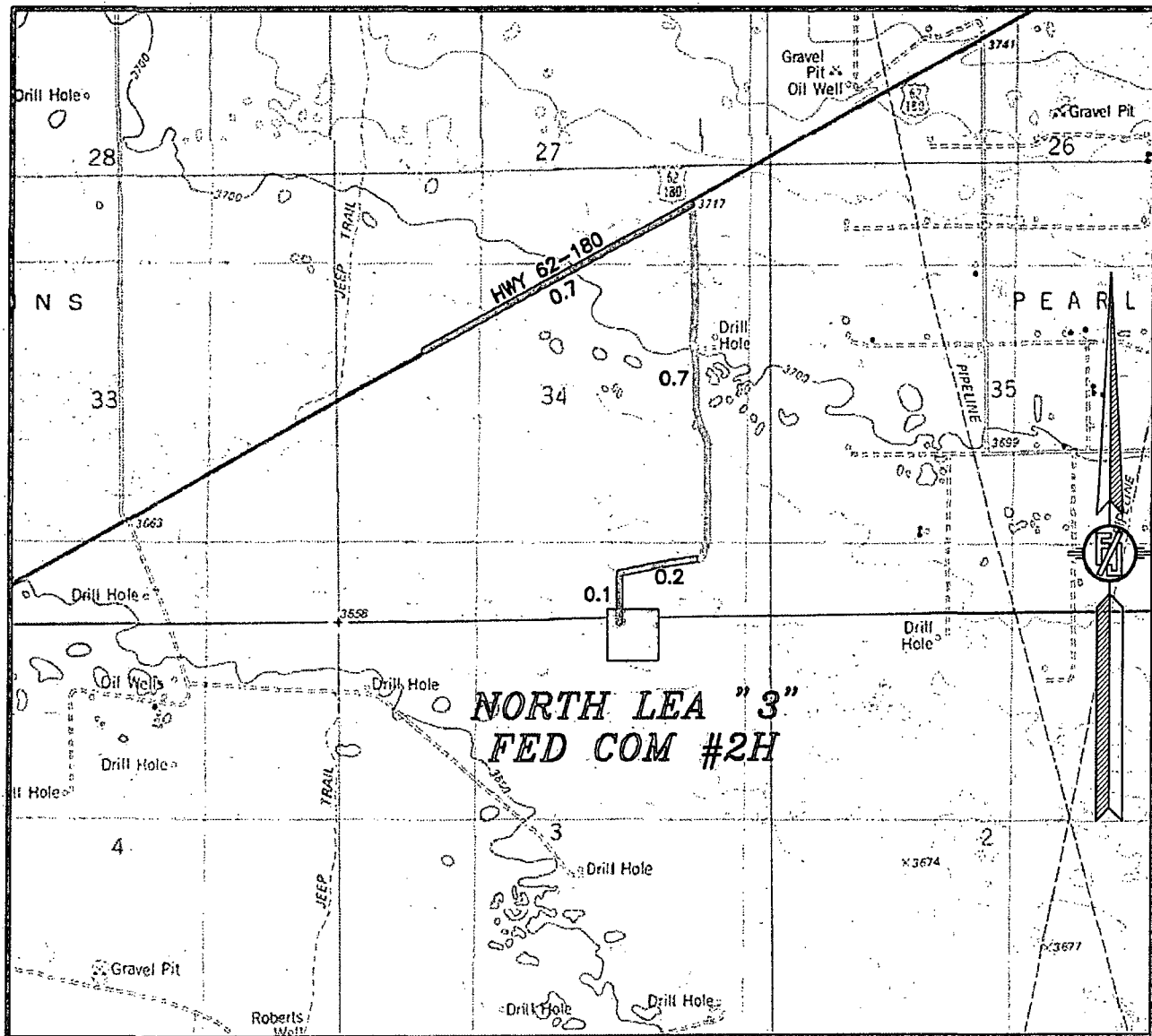
**NORTH LEA "3" FED COM #2H
LOCATED 200 FT. FROM THE NORTH LINE
AND 1670 FT. FROM THE EAST LINE OF
SECTION 3, TOWNSHIP 20 SOUTH,
RANGE 34 EAST, N.M.P.M.
LEA COUNTY, STATE OF NEW MEXICO**

SURVEY NO. 1891

MADRON SURVEYING, INC. 301 SOUTH CANAL CARLSBAD, NEW MEXICO
(575) 234-3341

301 SOUTH CANAL
(575) 234-3341

SECTION 3, TOWNSHIP 20 SOUTH, RANGE 34 EAST, N.M.P.M.
LEA COUNTY, STATE OF NEW MEXICO
LOCATION VERIFICATION MAP



USGS QUAD MAP:
LEA

DISTANCES IN MILES

NOT TO SCALE

DIRECTIONS TO LOCATION

FROM MILE MARKER #79 ON HWY 62-180 GO EAST ON HWY 62-180
APPROX. 0.7 MILES TO A LEASE ROAD ON RIGHT (SOUTH) TURN
SOUTH ON LEASE ROAD GO APPROX. 0.7 MILES ROAD TURNS RIGHT
(WEST) GO WEST APPROX. 0.2 MILES TO LEASE ROAD ON LEFT
(SOUTH) TURN SOUTH GO APPROX 0.1 MILES LOCATION ON LEFT SIDE
(EAST) OF LEASE ROAD 175'

READ & STEVENS, INC.
NORTH LEA "3" FED COM #2H
LOCATED 200 FT. FROM THE NORTH LINE
AND 1670 FT. FROM THE EAST LINE OF
SECTION 3, TOWNSHIP 20 SOUTH,
RANGE 34 EAST, N.M.P.M.
LEA COUNTY, STATE OF NEW MEXICO

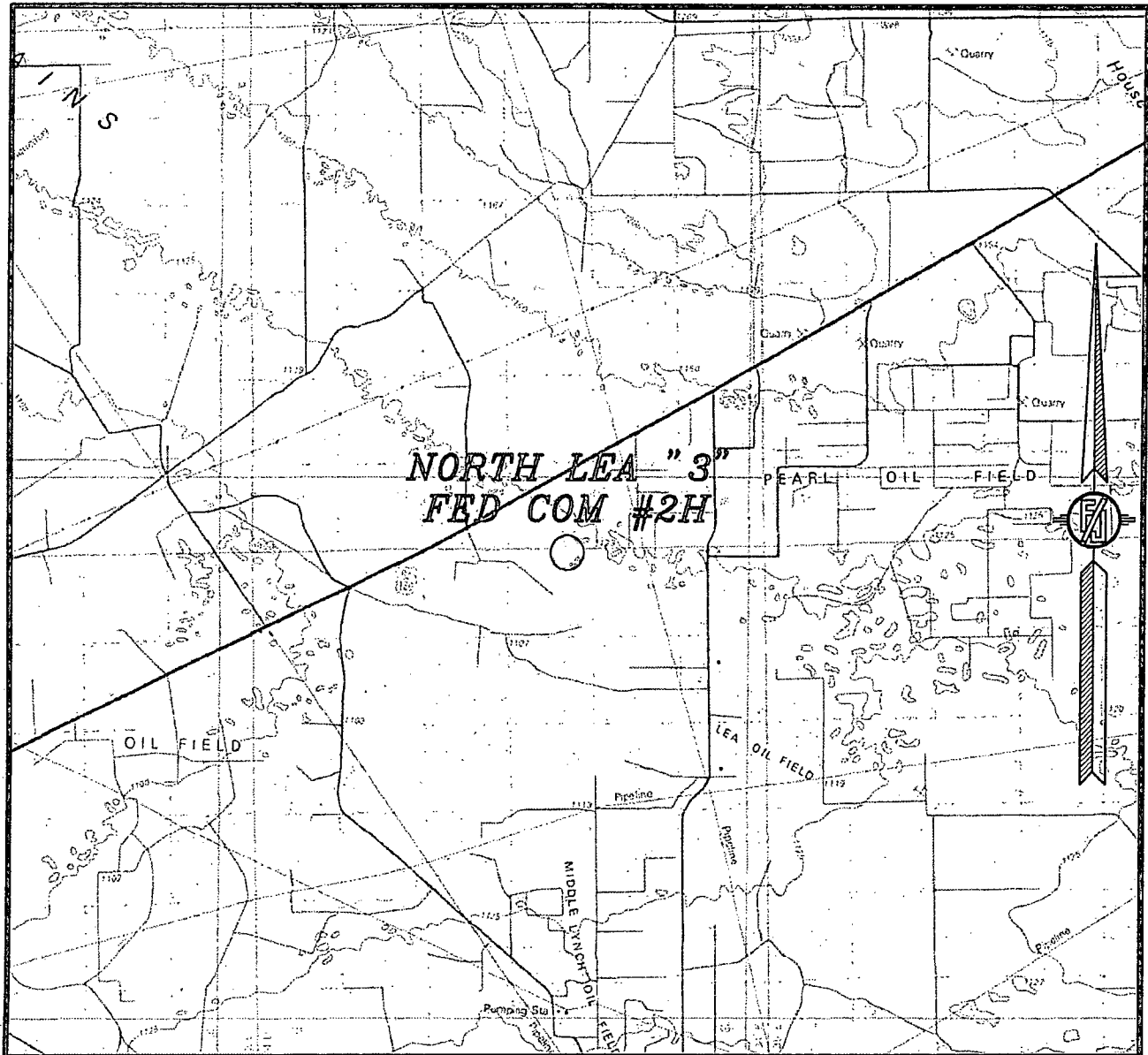
AUGUST 27, 2013

SURVEY NO. 1891

MADRON SURVEYING, INC. 301 SOUTH CANAL (575) 234-3341

CARLSBAD, NEW MEXICO

SECTION 3, TOWNSHIP 20 SOUTH, RANGE 34 EAST, N.M.P.M.
LEA COUNTY, STATE OF NEW MEXICO
VICINITY MAP



NOT TO SCALE

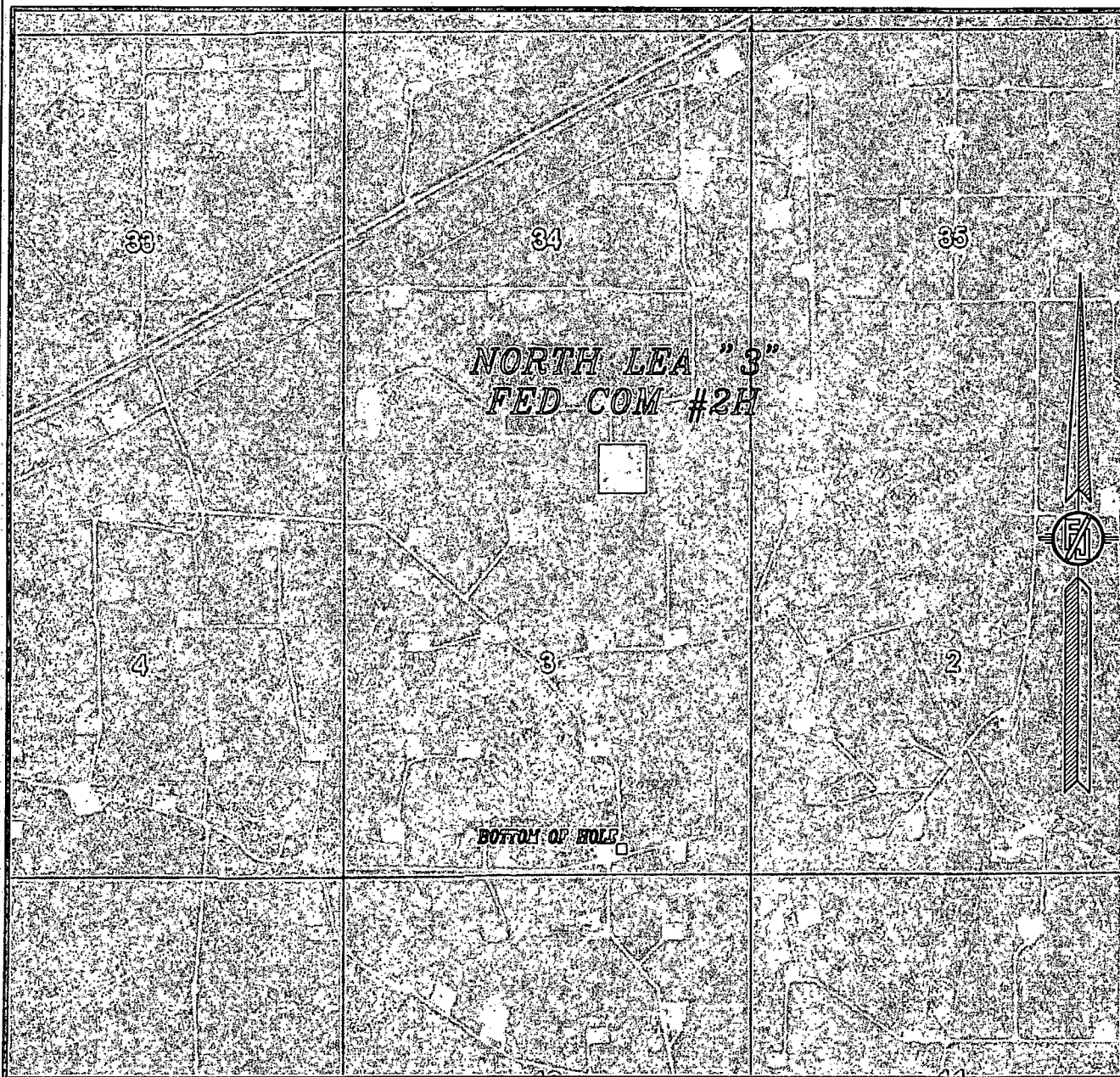
READ & STEVENS, INC.
NORTH LEA "3" FED COM #2H
LOCATED 200 FT. FROM THE NORTH LINE
AND 1670 FT. FROM THE EAST LINE OF
SECTION 3, TOWNSHIP 20 SOUTH,
RANGE 34 EAST, N.M.P.M.
LEA COUNTY, STATE OF NEW MEXICO

AUGUST 27, 2013

SURVEY NO. 1891

MADRON SURVEYING, INC. 301 SOUTH CANAL CARLSBAD, NEW MEXICO
(575) 234-3341

SECTION 3, TOWNSHIP 20 SOUTH, RANGE 34 EAST, N.M.P.M.
LEA COUNTY, STATE OF NEW MEXICO
AERIAL PHOTO



NOT TO SCALE
AERIAL PHOTO:
GOOGLE EARTH
MARCH 2012

READ & STEVENS, INC.
NORTH LEA "3" FED COM #2H
LOCATED 200 FT. FROM THE NORTH LINE
AND 1670 FT. FROM THE EAST LINE OF
SECTION 3, TOWNSHIP 20 SOUTH,
RANGE 34 EAST, N.M.P.M.
LEA COUNTY, STATE OF NEW MEXICO

AUGUST 27, 2013

SURVEY NO. 1891

MADRON SURVEYING, INC. 301 SOUTH CANAL CARLSBAD, NEW MEXICO
(575) 234-3341

1-MILE RADIUS MAP

blue circle = surface hole
green circle = bottom hole

21370

37615

33

34

35

4

3

2

9

10

11

- PERM
- ☐ QUEN
- ☐ BOUGH
- ☐ DLWR
- ☐ SADR
- ☐ YATES
- ☒ ABO
- ☐ BSPG
- ☐ WFMP
- ☐ PSVL
- ☐ CISCO
- ☐ CNYN
- ☐ STRN
- ☐ ATOK
- ☐ MRRW
- ☐ MSSP
- ☐ WDFD
- ☐ DVNN
- ☐ SLRN

41366
32315
slate code = 30
county code = 025

North Lea 3 Fed Com #2H

16

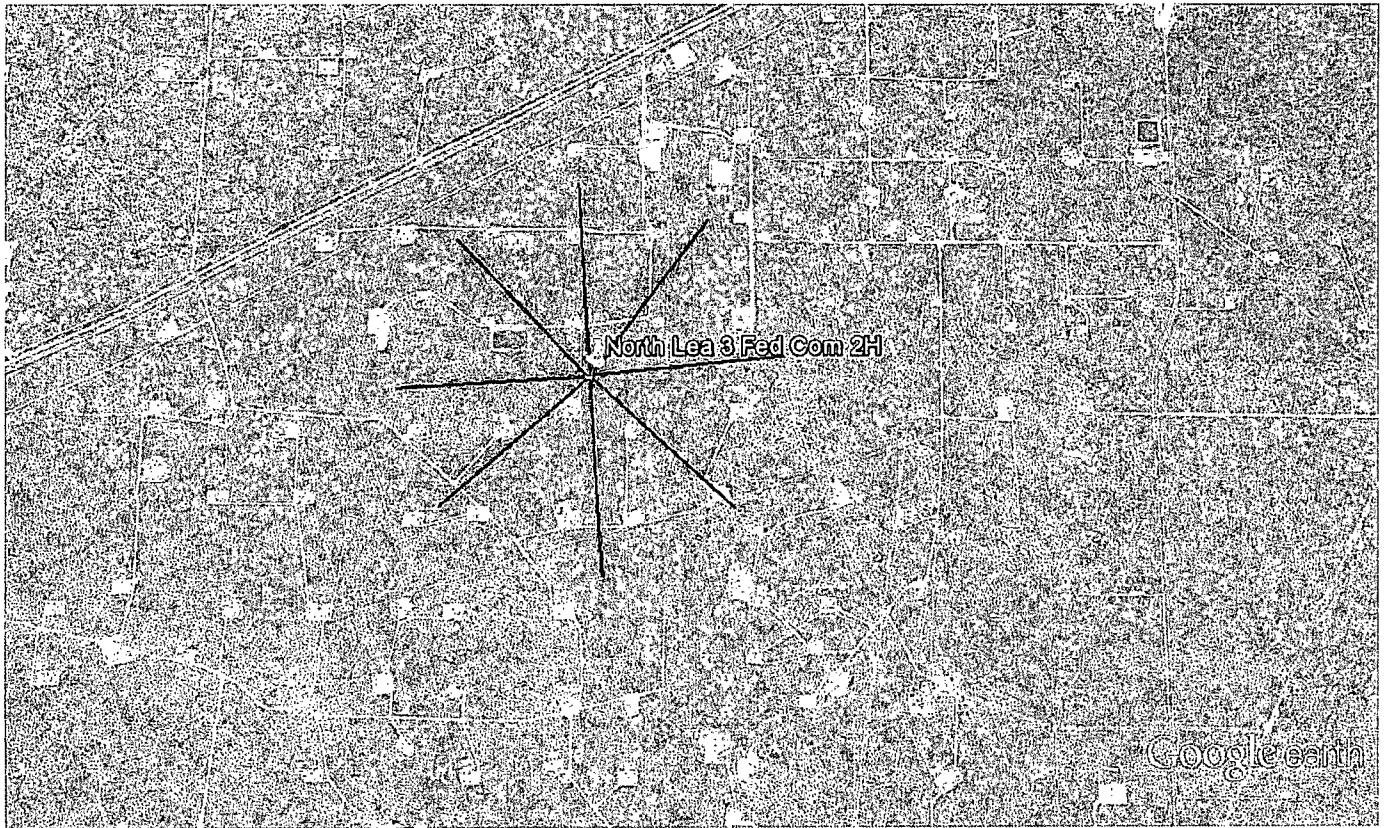
15

14

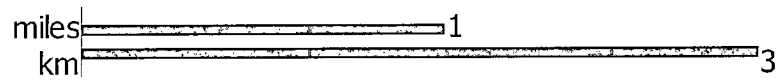
20S 34E

40671
20386

0 2,250
FEET



Google earth



**Read and Stevens, Inc.
Drilling Prognosis
North Lea 3 Fed Com #2H**

Revision date: March 25, 2014

Surface Location: 586,163.01usft N, 784,123.26usft E
200' FNL, 1670' FEL

Section 3, T-20-S, R-34-E
Lea County, New Mexico

Bottom Hole: 581,385.20usft N, 784,148.42usft E
330' FSL, 1670' FEL

Section 3, T-20-S, R-34-E
Lea County, New Mexico

Planned Total Depth: 10,925' TVD /15,385' MD

RKB: 3700.6' GL: 3678.6'

Preparer: Steve Morris