

Submit 1 Copy To Appropriate District Office
District I - (575) 393-6161
1625 N. French Dr., Hobbs, NM 88240
District II - (575) 748-1283
811 S. First St., Artesia, NM 88210
District III - (505) 334-6178
1000 Rio Brazos Rd., Aztec, NM 87410
District IV - (505) 476-3460
1220 S. St. Francis Dr., Santa Fe, NM 87505

State of New Mexico
Energy, Minerals and Natural Resources

Form C-103
Revised August 1, 2011

OIL CONSERVATION DIVISION
1220 South St. Francis Dr.
Santa Fe, NM 87505

WELL API NO.
30-025-03182

5. Indicate Type of Lease

STATE FEE XX

6. State Oil & Gas Lease No.

SUNDRY NOTICES AND REPORTS ON WELLS
(DO NOT USE THIS FORM FOR PROPOSALS TO DRILL OR TO DEEPEN OR TO ABANDON A DIFFERENT RESERVOIR. USE "APPLICATION FOR PERMIT" (FORM C-101) FOR SUCH PROPOSALS.)

1. Type of Well: Oil Well XX Gas Well Other NOV 04 2014

2. Name of Operator
State of New Mexico formerly Xeric Oil & Gas Corp.

3. Address of Operator
1625 N. French Drive Hobbs, New Mexico 88240

4. Well Location
Unit Letter K : 1980 feet from the S line and 1980 feet from the W line
Section 22 Township 19S Range 35E NMPM County Lea

11. Elevation (Show whether DR, RKB, RT, GR, etc.)

12. Check Appropriate Box to Indicate Nature of Notice, Report or Other Data

NOTICE OF INTENTION TO:

PERFORM REMEDIAL WORK ☐ PLUG AND ABANDON XX
TEMPORARILY ABANDON ☐ CHANGE PLANS ☐
PULL OR ALTER CASING ☐ MULTIPLE COMPL ☐
DOWNHOLE COMMINGLE ☐

OTHER: ☐

SUBSEQUENT REPORT OF:

REMEDIAL WORK ☐ ALTERING CASING ☐
COMMENCE DRILLING OPNS. ☐ P AND A ☐
CASING/CEMENT JOB ☐

OTHER: ☐

13. Describe proposed or completed operations. (Clearly state all pertinent details, and give pertinent dates, including estimated date of starting any proposed work). SEE RULE 19.15.7.14 NMAC. For Multiple Completions: Attach wellbore diagram of proposed completion or recompletion.

BASIC

SEE ATTACHMENTS: PROCEDURE & SCHEMATIC

Spud Date:

Rig Release Date:

I hereby certify that the information above is true and complete to the best of my knowledge and belief.

SIGNATURE Maureen Brown TITLE Compliance Officer DATE 7/5/2013

type or print name _____ E-mail address: _____ PHONE: 575-393-6161

For State Use Only

APPROVED BY: Mark Whitelam TITLE Compliance Officer DATE 7/11/2013

Conditions of Approval (if any):

NOV 04 2014

State of New Mexico formerly XERIC OIL & GAS

LEASE NAME EAST PEARL QUEEN UNIT #8 API 30-0 25 - 03182

U.L. K Section 22 - T 19 S-R 35 E FROM 1980 ~~R~~/S L, 1980 ~~R~~/W L.

SPECIAL NOTE—Mud Laden Fluid will consist of 9.5# brine with 12.5# Salt Gel per BBL (25 sacks of gel/ per 100 BBLS Brine). All cement plugs will be 25 sacks of cement or 100', whichever is greater. **Unless otherwise specified in the approved procedure**, cement plugs shall consist of class "C" for depths to 7500'. Class "H" will be used for plugs deeper than 7500'.

1. MIRU plugging unit. Lay down production equipment.
2. Set CIBP @ 4600'. Circulate MLF. Spot 25 sxs cmt on CIBP.
3. Perf/Sqz or Spot 70' sxs cmt @ 3700'. If perf, WOC & TAG.
4. Perf/Sqz or Spot 3' sxs cmt @ 1800'. If perf, WOC and TAG.
5. Perf/Sqz or Spot @ 300' w/ sufficient volume to circ cmt to surface inside/outside of csg strings.
6. Cutoff wellhead and anchors, install marker.

-----SPECIAL NOTES-----

1/10/1978 BAD CASING 3375' - 3500', 3185' - 3428'

1/19/1978 RAN BAKER LOC-SET + BAKER MODEL

"C" TENSION PKR.

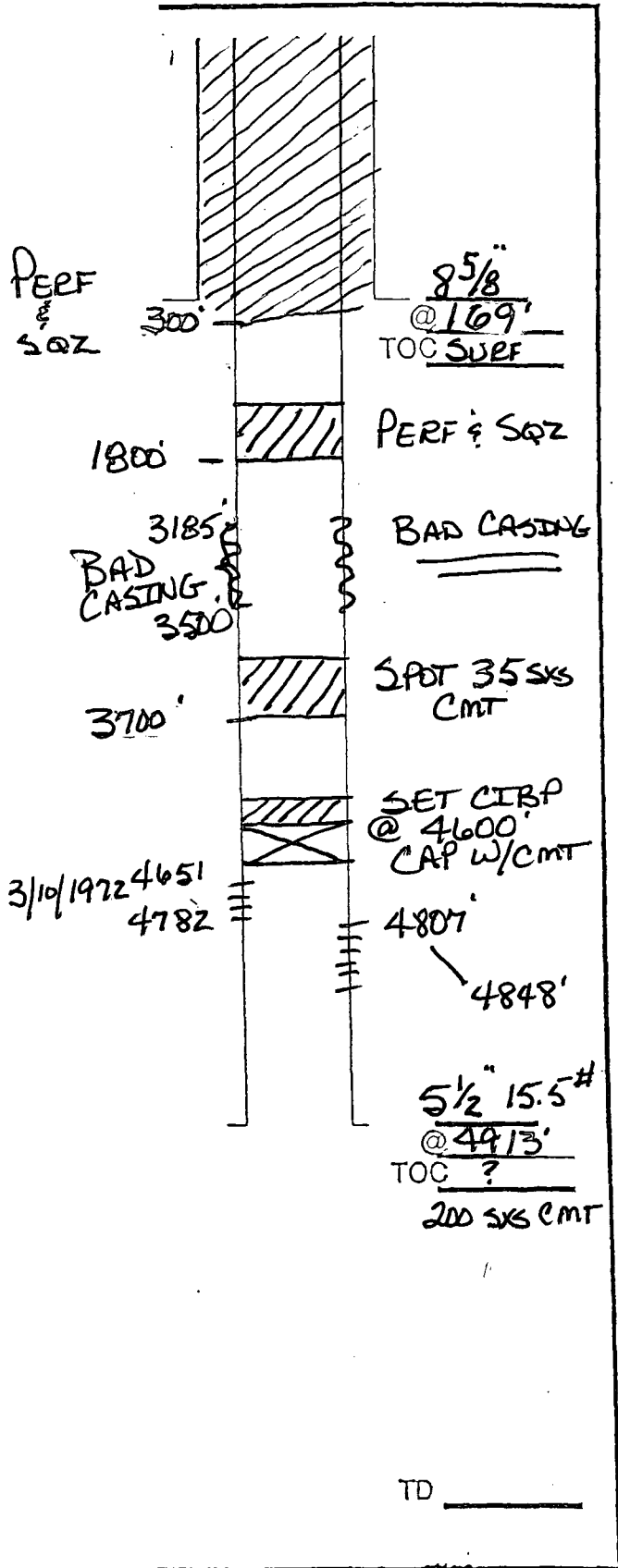
LOC-SET @ 4776' ← * THIS IS SET
MODEL "C" @ 2789' BELOW 1972 PERFS.

WATER FLOW FROM BAD CASING
WHEN SI WOULD BUILD TO 1200 PSI.

1/12/1978 CMT JOB FAILED. CMT DID NOT
GET HARD. WAS UNABLE TO GET SQZ.

PLUGGING & ABANDONMENT WORKSHEET

OPERATOR STATE OF NM formerly XERC OIL
 LEASENAME EAST PEARL QUEEN UNIT
 WELL # 8
 SECT 22 TWN 19S RNG 35E
 FROM 1980 M/S L 1980 E/W L
 TD: _____ FORMATION @ TD _____
 PBTD: _____ FORMATION @ PBTD _____



	SIZE	SET @	TOC	TOC DETERMINED BY	
SURFACE	8 5/8	1169	SURF	CIBP	
INTMED 1					
INTMED 2					
PROD	5 1/2	4913	?	200 SXS CMT	
	SIZE	TOP	BOT	TOC	DETERMINED BY
LINER 1					
LINER 2					
CUT & PULL @			TOP - BOTTOM		
INTMED 1			PERFS	-	
INTMED 2			OPENHOLE	-	
PROD					

* REQUIRED PLUGS DISTRICT I

PLUGGER (NAME)	
YATES	
QUEEN	
GRAYBURG	
CAM ANDREX	
CAPTAIN REEF	
DELAWARE	
BELL CANYON	
CERRY CANYON	
BERRY CANYON	
BONZEMING	
OLORIETA	
BURGEY	
TUES	
ORINGARD	
ADO	
WC	
PENK	
STRAWN	
ATOKA	
MOGLOW	
LOUIS	
DEVONIAN	

PLUG	TYPE	SACKS	DEPTH
PLUG	PLUG	CMT	
EXAMPLES			
PLUG #1	OH	25 SXS	9850'
PLUG #2	SHOE	50 SXS	8700'-8900'
PLUG #3	CIBP/35'		5300'
PLUG #3	CIBP	25 SXS	5300'
PLUG #4	STUB	50 SXS	4600'-4700'
PLUG #6	REINR SQZ	200 SXS	400'
PLUG #7	SURF	10 SXS	0-10'
PLUG #1			
PLUG #2			
PLUG #3			
PLUG #4			
PLUG #5			
PLUG #6			
PLUG #7			
PLUG #8			
PLUG #9			
PLUG #10			
PLUG #			
PLUG #			