

HOBBS OCD

District I
1625 N. French Dr., Hobbs, NM 88240
Phone: (575) 393-6161 Fax: (575) 393-0720
District II
811 S. First St., Artesia, NM 88210
Phone: (575) 748-1283 Fax: (575) 748-9720
District III
1000 Rio Brazos Road, Aztec, NM 87410
Phone: (505) 334-6178 Fax: (505) 334-6170
District IV
1220 S. St. Francis Dr., Santa Fe, NM 87505
Phone: (505) 476-3460 Fax: (505) 476-3462

NOV 10 2014

State of New Mexico

Energy, Minerals & Natural Resources Department

RECEIVED OIL CONSERVATION DIVISION

1220 South St. Francis Dr.

Santa Fe, NM 87505

Form C-102

Revised August 1, 2011

Submit one copy to appropriate

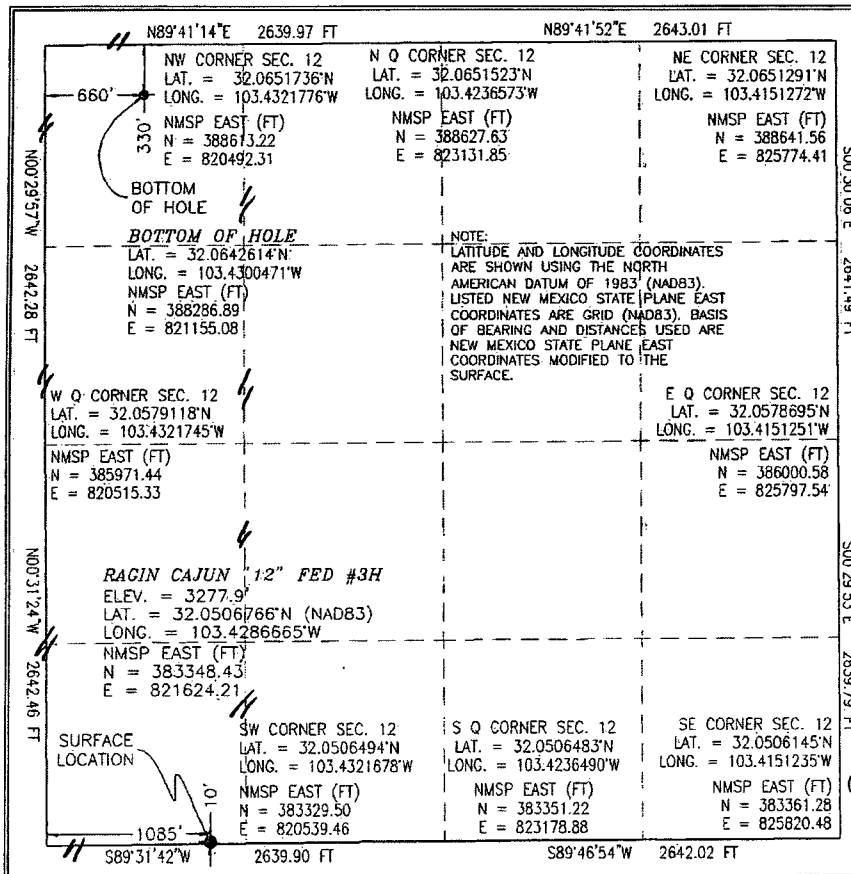
District Office

☐ AMENDED REPORT

WELL LOCATION AND ACREAGE DEDICATION PLAT

| | | | | | |
|--|----------------------|--|----------------------|--|---|
| ¹ API Number 30-025-42257 | | ² Pool Code 97597 | | ³ Pool Name Jabalina BRUSHY CANYON, DELAWARE SW | |
| ⁴ Property Code 39913 | | ⁵ Property Name RAGIN CAJUN 12 FED | | | ⁶ Well Number 3H |
| ⁷ OGRID No. 6137 | | ⁸ Operator Name DEVON ENERGY PRODUCTION COMPANY, L.P. | | | ⁹ Elevation 3277.9 |
| ¹⁰ Surface Location | | | | | |
| UL or lot no. M | Section 12 | Township 26 S | Range 34 E | Lot Idn 10 | Feet from the 1085 |
| | | North/South line SOUTH | | East/West line WEST | |
| | | County LEA | | | |
| ¹¹ Bottom Hole Location If Different From Surface | | | | | |
| UL or lot no. D | Section 12 | Township 26 S | Range 34 E | Lot Idn 330 | Feet from the 660 |
| | | North/South line NORTH | | East/West line WEST | |
| | | County LEA | | | |
| ¹² Dedicated Acres 160 | | ¹³ Joint or Infill | | ¹⁴ Consolidation Code | |
| | | | | ¹⁵ Order No. | |

No allowable will be assigned to this completion until all interests have been consolidated or a non-standard unit has been approved by the division.



¹⁷ OPERATOR CERTIFICATION

I hereby certify that the information contained herein is true and complete to the best of my knowledge and belief, and that this organization either owns a working interest or unleased mineral interest in the land including the proposed bottom hole location or has a right to drill this well at this location pursuant to a contract with an owner of such a mineral or working interest, or to a voluntary pooling agreement or a compulsory pooling order heretofore entered by the division.

Signature: *[Signature]* Date: 5/1/2014

Printed Name: David H. Cook

E-mail Address: david.cook@dvn.com

¹⁸ SURVEYOR CERTIFICATION

I hereby certify that the well location shown on this plat was plotted from field notes of actual surveys made by me or under my supervision, and that the same is true and correct to the best of my belief.

APRIL 17, 2014

Date of Survey: *[Signature]*

Signature and Seal of Professional Surveyor: *[Signature]*

Certificate Number: FIRMORE, JARAMILLO, PLS 12797

EXPIRATION DATE: FEBRUARY 28, 2015

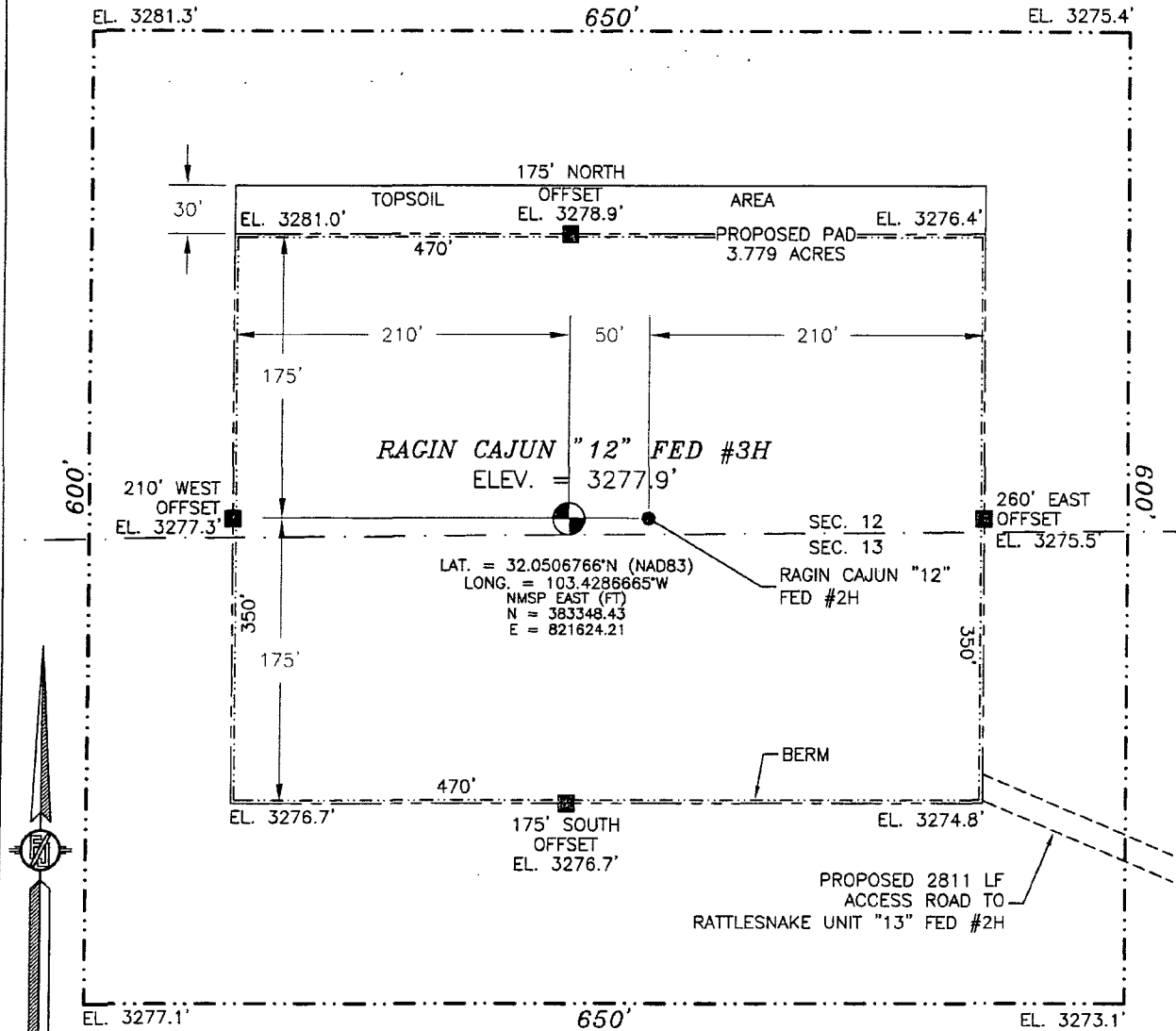
PP: 10 FSL & 1085 FWL

13
NOV 12 2014 P.M.

SECTION 12, TOWNSHIP 26 SOUTH, RANGE 34 EAST, N.M.P.M.
LEA COUNTY, STATE OF NEW MEXICO

SITE MAP

NOTE: LATITUDE AND LONGITUDE COORDINATES ARE SHOWN USING THE NORTH AMERICAN DATUM OF 1983 (NAD83). LISTED NEW MEXICO STATE PLANE EAST COORDINATES ARE GRID (NAD83). BASIS OF BEARING AND DISTANCES USED ARE NEW MEXICO STATE PLANE EAST COORDINATES MODIFIED TO THE SURFACE



010 50 100 200

SCALE 1" = 100'

DIRECTIONS TO LOCATION

FROM THE INTERSECTION OF CR 1 (ORLA ROAD) AND CR 2 (BATTLE AXE ROAD) GO EAST ON CR 2 11.9 MILES WHERE ROAD BENDS NORTH AND CONTINUE EAST ON CALICHE PIPE LINE ROAD (EL PASO R/W), GO EAST 8 MILES TO LEASE ROAD GO SOUTH (RIGHT) 1.7 MILES TO YATES WELL "RENEGADE" FROM SOUTHWEST CORNER, FOLLOW FLAGS NORTHWEST 1708' TO RATTLESNAKE UNIT "13" FED #2H, THEN AT SOUTHEAST-EAST PAD CORNER FOLLOW PROPOSED ROAD SURVEY FLAGS SOUTHWEST 1555', THEN NORTHWEST 1256' TO THE PROPOSED SOUTHEAST CORNER OF PAD FOR THIS LOCATION.

DEVON ENERGY PRODUCTION COMPANY, L.P.

RAGIN CAJUN "12" FED #3H

LOCATED 10 FT. FROM THE SOUTH LINE
AND 1085 FT. FROM THE WEST LINE OF
SECTION 12, TOWNSHIP 26 SOUTH,
RANGE 34 EAST, N.M.P.M.
LEA COUNTY, STATE OF NEW MEXICO

APRIL 17, 2014

SURVEY NO. 2897

MADRON SURVEYING, INC. 301 SOUTH CANAL (575) 234-3341

CARLSBAD, NEW MEXICO

NOV 10 2014

PECOS DISTRICT **RECEIVED CONDITIONS OF APPROVAL**

| | |
|------------------------------|---------------------------------------|
| OPERATOR'S NAME: | Devon Energy Production Company, L.P. |
| LEASE NO.: | NMNM-100567 |
| WELL NAME & NO.: | Ragin Cajun 12 Fed 3H |
| SURFACE HOLE FOOTAGE: | 0010' FSL & 1085' FWL |
| BOTTOM HOLE FOOTAGE: | 0330' FNL & 0660' FWL |
| LOCATION: | Section 12, T. 26 S., R 34 E., NMPM |
| COUNTY: | Lea County, New Mexico |

TABLE OF CONTENTS

Standard Conditions of Approval (COA) apply to this APD. If any deviations to these standards exist or special COAs are required, the section with the deviation or requirement will be checked below.

- ☐ **General Provisions**
- ☐ **Permit Expiration**
- ☐ **Archaeology, Paleontology, and Historical Sites**
- ☐ **Noxious Weeds**
- ☒ **Special Requirements**
 - Lesser Prairie-Chicken Timing Stipulations
 - Ground-level Abandoned Well Marker
 - Raptor Nest Stipulation
- ☐ **Construction**
 - Notification
 - Topsoil
 - Closed Loop System
 - Federal Mineral Material Pits
 - Well Pads
 - Roads
- ☐ **Road Section Diagram**
- ☒ **Drilling**
 - Cement Requirements
 - Logging Requirements
 - Waste Material and Fluids
- ☐ **Production (Post Drilling)**
 - Well Structures & Facilities
 - Pipelines
- ☐ **Interim Reclamation**
- ☐ **Final Abandonment & Reclamation**

I. GENERAL PROVISIONS

The approval of the Application For Permit To Drill (APD) is in compliance with all applicable laws and regulations: 43 Code of Federal Regulations 3160, the lease terms, Onshore Oil and Gas Orders, Notices To Lessees, New Mexico Oil Conservation Division (NMOCD) Rules, National Historical Preservation Act As Amended, and instructions and orders of the Authorized Officer. Any request for a variance shall be submitted to the Authorized Officer on Form 3160-5, Sundry Notices and Report on Wells.

II. PERMIT EXPIRATION

If the permit terminates prior to drilling and drilling cannot be commenced within 60 days after expiration, an operator is required to submit Form 3160-5, Sundry Notices and Reports on Wells, requesting surface reclamation requirements for any surface disturbance. However, if the operator will be able to initiate drilling within 60 days after the expiration of the permit, the operator must have set the conductor pipe in order to allow for an extension of 60 days beyond the expiration date of the APD. (Filing of a Sundry Notice is required for this 60 day extension.)

III. ARCHAEOLOGICAL, PALEONTOLOGY & HISTORICAL SITES

Any cultural and/or paleontological resource discovered by the operator or by any person working on the operator's behalf shall immediately report such findings to the Authorized Officer. The operator is fully accountable for the actions of their contractors and subcontractors. The operator shall suspend all operations in the immediate area of such discovery until written authorization to proceed is issued by the Authorized Officer. An evaluation of the discovery shall be made by the Authorized Officer to determine the appropriate actions that shall be required to prevent the loss of significant cultural or scientific values of the discovery. The operator shall be held responsible for the cost of the proper mitigation measures that the Authorized Officer assesses after consultation with the operator on the evaluation and decisions of the discovery. Any unauthorized collection or disturbance of cultural or paleontological resources may result in a shutdown order by the Authorized Officer.

IV. NOXIOUS WEEDS

The operator shall be held responsible if noxious weeds become established within the areas of operations. Weed control shall be required on the disturbed land where noxious weeds exist, which includes the roads, pads, associated pipeline corridor, and adjacent land affected by the establishment of weeds due to this action. The operator shall consult with the Authorized Officer for acceptable weed control methods, which include following EPA and BLM requirements and policies.

V. SPECIAL REQUIREMENT(S)

Timing Limitation Stipulation / Condition of Approval for lesser prairie-chicken:

Oil and gas activities including 3-D geophysical exploration, and drilling will not be allowed in lesser prairie-chicken habitat during the period from March 1st through June 15th annually. During that period, other activities that produce noise or involve human activity, such as the maintenance of oil and gas facilities, pipeline, road, and well pad construction, will be allowed except between 3:00 am and 9:00 am. The 3:00 am to 9:00 am restriction will not apply to normal, around-the-clock operations, such as venting, flaring, or pumping, which do not require a human presence during this period. Additionally, no new drilling will be allowed within up to 200 meters of leks known at the time of permitting. Normal vehicle use on existing roads will not be restricted. Exhaust noise from pump jack engines must be muffled or otherwise controlled so as not to exceed 75 db measured at 30 feet from the source of the noise.

Ground-level Abandoned Well Marker to avoid raptor perching: Upon the plugging and subsequent abandonment of the well, the well marker will be installed at ground level on a plate containing the pertinent information for the plugged well. For more installation details, contact the Carlsbad Field Office at 575-234-5972.

Raptor Nest Stipulation

Raptor Nest Mitigation

- A BLM Wildlife Biologist must be contacted by the operator 5 days prior to construction activities to determine if the raptor nest is active.
- Raptor nests on special, natural habitat features, such as trees, large brush, cliff faces and escarpments, will be protected by not allowing surface disturbance within up to 200 meters of nests or by delaying activity for up to 90 days, or a combination of both. Exceptions to this requirement for raptor nests will be considered if the nests expected to be disturbed are inactive, the proposed activity is of short duration (e.g. habitat enhancement projects, fences, pipelines), and will not result in continuing activity in proximity to the nest.
- Exhaust noise from pump jack engines must be muffled or otherwise controlled so as not to exceed 75 db measured at 30 ft. from the source of the noise.

VI. CONSTRUCTION

A. NOTIFICATION

The BLM shall administer compliance and monitor construction of the access road and well pad. Notify the Carlsbad Field Office at (575) 234-5909 at least 3 working days prior to commencing construction of the access road and/or well pad.

When construction operations are being conducted on this well, the operator shall have the approved APD and Conditions of Approval (COA) on the well site and they shall be made available upon request by the Authorized Officer.

B. TOPSOIL

The operator shall strip the top portion of the soil (root zone) from the entire well pad area and stockpile the topsoil along the edge of the well pad as depicted in the APD. The root zone is typically six (6) inches in depth. All the stockpiled topsoil will be redistributed over the interim reclamation areas. Topsoil shall not be used for berming the pad or facilities. For final reclamation, the topsoil shall be spread over the entire pad area for seeding preparation.

Other subsoil (below six inches) stockpiles must be completely segregated from the topsoil stockpile. Large rocks or subsoil clods (not evident in the surrounding terrain) must be buried within the approved area for interim and final reclamation.

C. CLOSED LOOP SYSTEM

Tanks are required for drilling operations: No Pits.

The operator shall properly dispose of drilling contents at an authorized disposal site.

D. FEDERAL MINERAL MATERIALS PIT

Payment shall be made to the BLM prior to removal of any federal mineral materials. Call the Carlsbad Field Office at (575) 234-5972.

E. WELL PAD SURFACING

Surfacing of the well pad is not required.

If the operator elects to surface the well pad, the surfacing material may be required to be removed at the time of reclamation. The well pad shall be constructed in a manner which creates the smallest possible surface disturbance, consistent with safety and operational needs.

F. EXCLOSURE FENCING (CELLARS & PITS)

Exclosure Fencing

The operator will install and maintain exclosure fencing for all open well cellars to prevent access to public, livestock, and large forms of wildlife before and after drilling operations until the pit is free of fluids and the operator initiates backfilling. (For examples of exclosure fencing design, refer to BLM's Oil and Gas Gold Book, Exclosure Fence Illustrations, Figure 1, Page 18.)

G. ON LEASE ACCESS ROADS**Road Width**

The access road shall have a driving surface that creates the smallest possible surface disturbance and does not exceed fourteen (14) feet in width. The maximum width of surface disturbance, when constructing the access road, shall not exceed twenty-five (25) feet.

Surfacing

Surfacing material is not required on the new access road driving surface. If the operator elects to surface the new access road or pad, the surfacing material may be required to be removed at the time of reclamation.

Where possible, no improvements should be made on the unsurfaced access road other than to remove vegetation as necessary, road irregularities, safety issues, or to fill low areas that may sustain standing water.

The Authorized Officer reserves the right to require surfacing of any portion of the access road at any time deemed necessary. Surfacing may be required in the event the road deteriorates, erodes, road traffic increases, or it is determined to be beneficial for future field development. The surfacing depth and type of material will be determined at the time of notification.

Crowning

Crowning shall be done on the access road driving surface. The road crown shall have a grade of approximately 2% (i.e., a 1" crown on a 14' wide road). The road shall conform to Figure 1; cross section and plans for typical road construction.

Ditching

Ditching shall be required on both sides of the road.

Turnouts

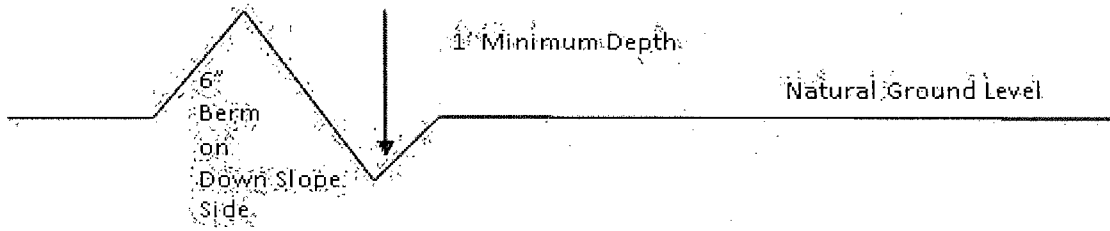
Vehicle turnouts shall be constructed on the road. Turnouts shall be intervisible with interval spacing distance less than 1000 feet. Turnouts shall conform to Figure 1; cross section and plans for typical road construction.

Drainage

Drainage control systems shall be constructed on the entire length of road (e.g. ditches, sidehill outsloping and insloping, lead-off ditches, culvert installation, and low water crossings).

A typical lead-off ditch has a minimum depth of 1 foot below and a berm of 6 inches above natural ground level. The berm shall be on the down-slope side of the lead-off ditch.

Cross Section of a Typical Lead-off Ditch



All lead-off ditches shall be graded to drain water with a 1 percent minimum to 3 percent maximum ditch slope. The spacing interval are variable for lead-off ditches and shall be determined according to the formula for spacing intervals of lead-off ditches, but may be amended depending upon existing soil types and centerline road slope (in %);

Formula for Spacing Interval of Lead-off Ditches

Example - On a 4% road slope that is 400 feet long, the water flow shall drain water into a lead-off ditch. Spacing interval shall be determined by the following formula:

$$400 \text{ foot road with } 4\% \text{ road slope: } \frac{400'}{4\%} + 100' = 200' \text{ lead-off ditch interval}$$

Cattleguards

An appropriately sized cattleguard sufficient to carry out the project shall be installed and maintained at fence/road crossings. Any existing cattleguards on the access road route shall be repaired or replaced if they are damaged or have deteriorated beyond practical use. The operator shall be responsible for the condition of the existing cattleguards that are in place and are utilized during lease operations.

Fence Requirement

Where entry is granted across a fence line, the fence shall be braced and tied off on both sides of the passageway prior to cutting. The operator shall notify the private surface landowner or the grazing allotment holder prior to crossing any fences.

Public Access

Public access on this road shall not be restricted by the operator without specific written approval granted by the Authorized Officer.

Construction Steps

1. Salvage topsoil
2. Construct road

3. Redistribute topsoil
4. Revegetate slopes

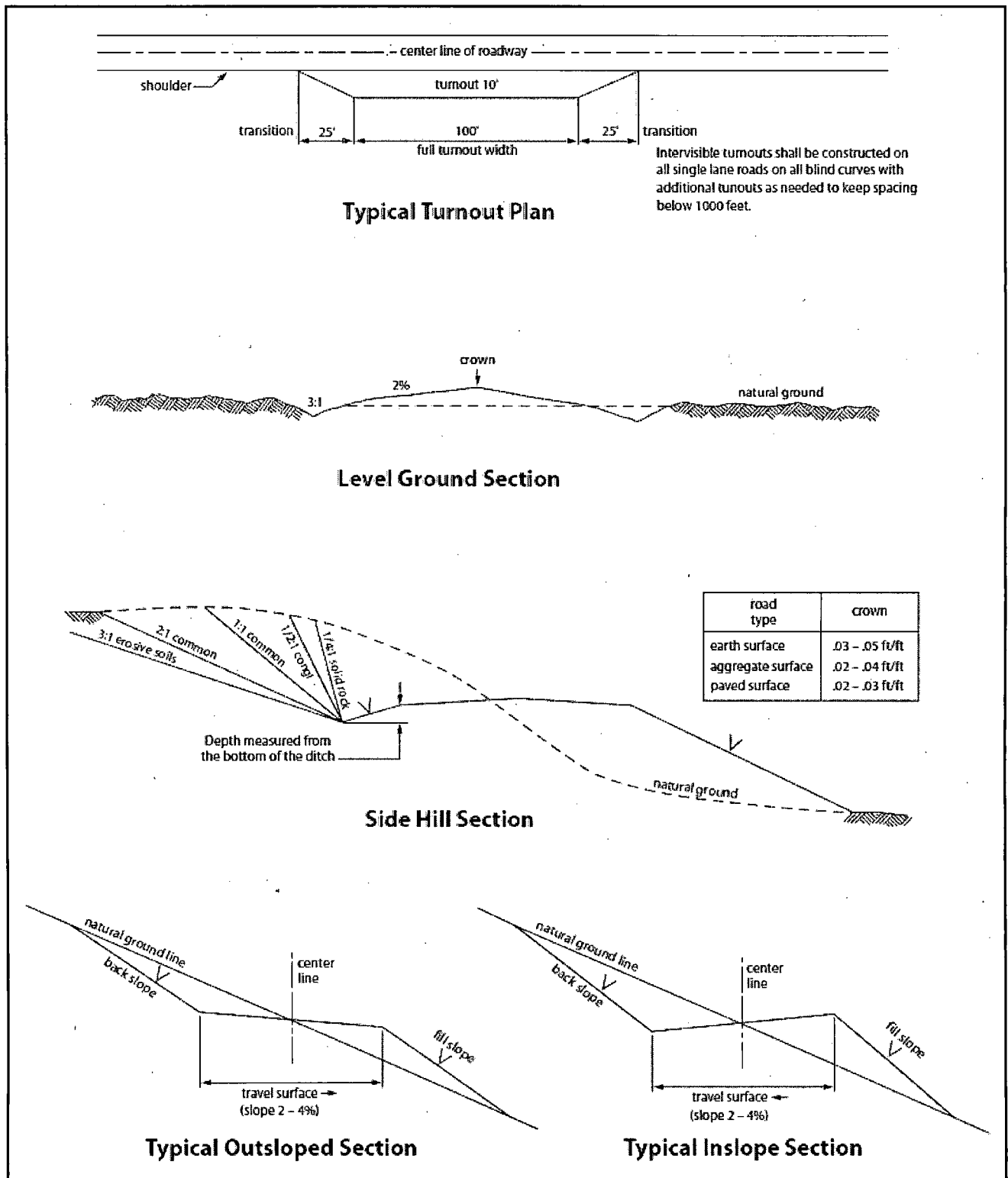


Figure 1. Cross-sections and plans for typical road sections representative of BLM resource or FS local and higher-class roads.

VII. DRILLING

A. DRILLING OPERATIONS REQUIREMENTS

The BLM is to be notified in advance for a representative to witness:

- a. Spudding well (minimum of 24 hours)
- b. Setting and/or Cementing of all casing strings (minimum of 4 hours)
- c. BOPE tests (minimum of 4 hours)

☒ **Lea County**

Call the Hobbs Field Station, 414 West Taylor, Hobbs NM 88240,
(575) 393-3612

1. **Although there are no measured amounts of Hydrogen Sulfide reported, it is always a potential hazard. Operator has stated that they will have monitoring equipment in place prior to drilling out of the surface shoe. If Hydrogen Sulfide is encountered, provide measured values and formations to the BLM.**
2. Unless the production casing has been run and cemented or the well has been properly plugged, the drilling rig shall not be removed from over the hole without prior approval. **If the drilling rig is removed without approval – an Incident of Non-Compliance will be written and will be a “Major” violation.**
3. Floor controls are required for 3M or Greater systems. These controls will be on the rig floor, unobstructed, readily accessible to the driller and will be operational at all times during drilling and/or completion activities. Rig floor is defined as the area immediately around the rotary table; the area immediately above the substructure on which the draw works is located, this does not include the dog house or stairway area.
4. **The record of the drilling rate along with the GR/N well log run from TD to surface (horizontal well – vertical portion of hole) shall be submitted to the BLM office as well as all other logs run on the borehole 30 days from completion. If available, a digital copy of the logs is to be submitted in addition to the paper copies. The Rustler top and top and bottom of Salt are to be recorded on the Completion Report.**

B. CASING

Changes to the approved APD casing program need prior approval if the items substituted are of lesser grade or different casing size or are Non-API. The Operator can exchange the components of the proposal with that of superior strength (i.e. changing from J-55 to N-80, or from 36# to 40#). Changes to the approved cement program need prior approval if the altered cement plan has less volume or strength or if the changes are substantial (i.e. Multistage tool, ECP, etc.).

The initial wellhead installed on the well will remain on the well with spools used as needed.

Centralizers required on surface casing per Onshore Order 2.III.B.1.f.

Wait on cement (WOC) time prior to drilling out for a primary cement job will be a minimum 18 hours for a water basin, 24 hours in the potash area, or 500 pounds compressive strength, whichever is greater for all casing strings. DURING THIS WOC TIME, NO DRILL PIPE, ETC. SHALL BE RUN IN THE HOLE. Provide compressive strengths including hours to reach required 500 pounds compressive strength prior to cementing each casing string. IF OPERATOR DOES NOT HAVE THE WELL SPECIFIC CEMENT DETAILS ONSITE PRIOR TO PUMPING THE CEMENT FOR EACH CASING STRING, THE WOC WILL BE 30 HOURS. See individual casing strings for details regarding lead cement slurry requirements.

No pea gravel permitted for remedial or fall back remedial without prior authorization from the BLM engineer.

Possibility of water flows in the Salado and Castile.

Possibility of lost circulation in the Red Beds, Rustler, and Delaware.

1. The 13-3/8 inch surface casing shall be set at approximately 1100 feet (a minimum of 25 feet into the Rustler Anhydrite and above the salt) and cemented to the surface. **If salt is encountered, set casing at least 25 feet above the salt.**
 - a. If cement does not circulate to the surface, the appropriate BLM office shall be notified and a temperature survey utilizing an electronic type temperature survey with surface log readout will be used or a cement bond log shall be run to verify the top of the cement. Temperature survey will be run a minimum of six hours after pumping cement and ideally between 8-10 hours after completing the cement job.
 - b. **Wait on cement (WOC) time for a primary cement job is to include the lead cement slurry.**
 - c. Wait on cement (WOC) time for a remedial job will be a minimum of 4 hours after bringing cement to surface or 500 pounds compressive strength, whichever is greater.
 - d. If cement falls back, remedial cementing will be done prior to drilling out that string.

2. The minimum required fill of cement behind the 9-5/8 inch intermediate casing is:

☒ Cement to surface. If cement does not circulate see B.1.a, c-d above.

Centralizers required on horizontal leg, must be type for horizontal service and a minimum of one every other joint.

3. The minimum required fill of cement behind the 5-1/2 inch production casing is:

- ☒ Cement should tie-back at least 500 feet into previous casing string. Operator shall provide method of verification. **Excess calculates to 24% - Additional cement may be required.**

4. If hardband drill pipe is rotated inside casing, returns will be monitored for metal. If metal is found in samples, drill pipe will be pulled and rubber protectors which have a larger diameter than the tool joints of the drill pipe will be installed prior to continuing drilling operations.

C. PRESSURE CONTROL

1. All blowout preventer (BOP) and related equipment (BOPE) shall comply with well control requirements as described in Onshore Oil and Gas Order No. 2 and API RP 53 Sec. 17.
2. Variance approved to use flex line from BOP to choke manifold. Check condition of flexible line from BOP to choke manifold, replace if exterior is damaged or if line fails test. Line to be as straight as possible with no hard bends and is to be anchored according to Manufacturer's requirements. The flexible hose can be exchanged with a hose of equal size and equal or greater pressure rating. **Anchor requirements, specification sheet and hydrostatic pressure test certification matching the hose in service, to be onsite for review. These documents shall be posted in the company man's trailer and on the rig floor.** If the BLM inspector questions the straightness of the hose, a BLM engineer will be contacted and will review in the field or via picture supplied by inspector to determine if changes are required (operator shall expect delays if this occurs).
3. Minimum working pressure of the blowout preventer (BOP) and related equipment (BOPE) required for drilling below the surface casing shoe shall be **3000 (3M)** psi.
 - a. **For surface casing only:** If the BOP/BOPE is to be tested against casing, the wait on cement (WOC) time for that casing is to be met (see WOC statement at start of casing section). Independent service company required.

4. The appropriate BLM office shall be notified a minimum of 4 hours in advance for a representative to witness the tests.
- a. In a water basin, for all casing strings utilizing slips, these are to be set as soon as the crew and rig are ready and any fallback cement remediation has been done. The casing cut-off and BOP installation can be initiated four hours after installing the slips, which will be approximately six hours after bumping the plug. For those casing strings not using slips, the minimum wait time before cut-off is eight hours after bumping the plug. BOP/BOPE testing can begin after cut-off or once cement reaches 500 psi compressive strength (including lead when specified), whichever is greater. However, if the float does not hold, cut-off cannot be initiated until cement reaches 500 psi compressive strength (including lead when specified).
 - b. The tests shall be done by an independent service company utilizing a test plug **not a cup or J-packer**. The operator also has the option of utilizing an independent tester to test without a plug (i.e. against the casing) pursuant to Onshore Order 2 with the pressure not to exceed 70% of the burst rating for the casing. Any test against the casing must meet the WOC time for water basin (18 hours) or potash (24 hours) or 500 pounds compressive strength, whichever is greater, prior to initiating the test (see casing segment as lead cement may be critical item).
 - c. The test shall be run on a 5000 psi chart for a 2-3M BOP/BOP, on a 10000 psi chart for a 5M BOP/BOPE and on a 15000 psi chart for a 10M BOP/BOPE. If a linear chart is used, it shall be a one hour chart. A circular chart shall have a maximum 2 hour clock. If a twelve hour or twenty-four hour chart is used, tester shall make a notation that it is run with a two hour clock.
 - d. The results of the test shall be reported to the appropriate BLM office.
 - e. All tests are required to be recorded on a calibrated test chart. **A copy of the BOP/BOPE test chart and a copy of independent service company test will be submitted to the appropriate BLM office.**
 - f. The BOP/BOPE test shall include a low pressure test from 250 to 300 psi. The test will be held for a minimum of 10 minutes if test is done with a test plug and 30 minutes without a test plug. This test shall be performed prior to the test at full stack pressure.

D. DRILL STEM TEST

If drill stem tests are performed, Onshore Order 2.III.D shall be followed.

E. WASTE MATERIAL AND FLUIDS

All waste (i.e. drilling fluids, trash, salts, chemicals, sewage, gray water, etc.) created as a result of drilling operations and completion operations shall be safely contained and disposed of properly at a waste disposal facility. No waste material or fluid shall be disposed of on the well location or surrounding area.

Porto-johns and trash containers will be on-location during fracturing operations or any other crew-intensive operations.

JAM 110514

VIII. PRODUCTION (POST DRILLING)

A. WELL STRUCTURES & FACILITIES

Placement of Production Facilities

Production facilities should be placed on the well pad to allow for maximum interim recontouring and revegetation of the well location.

Exclosure Netting (Open-top Tanks)

Immediately following active drilling or completion operations, the operator will take actions necessary to prevent wildlife and livestock access, including avian wildlife, to all open-topped tanks that contain or have the potential to contain salinity sufficient to cause harm to wildlife or livestock, hydrocarbons, or Resource Conservation and Recovery Act of 1976-exempt hazardous substances. At a minimum, the operator will net, screen, or cover open-topped tanks to exclude wildlife and livestock and prevent mortality. If the operator uses netting, the operator will cover and secure the open portion of the tank to prevent wildlife entry. The operator will net, screen, or cover the tanks until the operator removes the tanks from the location or the tanks no longer contain substances that could be harmful to wildlife or livestock. Use a maximum netting mesh size of 1 ½ inches. The netting must not be in contact with fluids and must not have holes or gaps.

Chemical and Fuel Secondary Containment and Exclosure Screening

The operator will prevent all hazardous, poisonous, flammable, and toxic substances from coming into contact with soil and water. At a minimum, the operator will install and maintain an impervious secondary containment system for any tank or barrel containing hazardous, poisonous, flammable, or toxic substances sufficient to contain the contents of the tank or barrel and any drips, leaks, and anticipated precipitation. The operator will dispose of fluids within the containment system that do not meet applicable state or U. S. Environmental Protection Agency livestock water standards in accordance with state law; the operator must not drain the fluids to the soil or ground. The operator will design, construct, and maintain all secondary containment systems to prevent wildlife and livestock exposure to harmful substances. At a minimum, the operator will install effective wildlife and livestock exclosure systems such as fencing, netting, expanded metal mesh, lids, and grate covers. Use a maximum netting mesh size of 1 ½ inches.

Open-Vent Exhaust Stack Exclosures

The operator will construct, modify, equip, and maintain all open-vent exhaust stacks on production equipment to prevent birds and bats from entering, and to discourage perching, roosting, and nesting. (*Recommended exclosure structures on open-vent exhaust stacks are in the shape of a cone.*) Production equipment includes, but may not be limited to, tanks, heater-treaters, separators, dehydrators, flare stacks, in-line units, and compressor mufflers.

Containment Structures

Proposed production facilities such as storage tanks and other vessels will have a secondary containment structure that is constructed to hold the capacity of 1.5 times the

largest tank, plus freeboard to account for precipitation, unless more stringent protective requirements are deemed necessary.

Painting Requirement

All above-ground structures including meter housing that are not subject to safety requirements shall be painted a flat non-reflective paint color, **Shale Green** from the BLM Standard Environmental Color Chart (CC-001: June 2008).

B. PIPELINES

BURIED PIPELINE STIPULATIONS

A copy of the application (Grant, APD, or Sundry Notice) and attachments, including conditions of approval, survey plat and/or map, will be on location during construction. BLM personnel may request to you a copy of your permit during construction to ensure compliance with all stipulations.

Holder agrees to comply with the following stipulations to the satisfaction of the Authorized Officer:

1. The Holder shall indemnify the United States against any liability for damage to life or property arising from the occupancy or use of public lands under this grant.
2. The Holder shall comply with all applicable Federal laws and regulations existing or hereafter enacted or promulgated. In any event, the holder shall comply with the Toxic Substances Control Act of 1976 as amended, 15 USC 2601 et seq. (1982) with regards to any toxic substances that are used, generated by or stored on the right-of-way or on facilities authorized under this right-of-way grant. (See 40 CFR Part 702-799 and especially, provisions on polychlorinated biphenyls, 40 CFR 761.1-761.193.) Additionally, any release of toxic substances (leaks, spills, etc.) in excess of the reportable quantity established by 40 CFR Part 117 shall be reported as required by the Comprehensive Environmental Response, Compensation, and Liability Act, section 102b. A copy of any report required or requested by any Federal agency or State government as a result of a reportable release or spill of any toxic substances shall be furnished to the authorized officer concurrent with the filing of the reports to the involved Federal agency or State government.
3. The holder agrees to indemnify the United States against any liability arising from the release of any hazardous substance or hazardous waste (as these terms are defined in the Comprehensive Environmental Response, Compensation and Liability Act of 1980, 42 U.S.C. 9601, et seq. or the Resource Conservation and Recovery Act, 42 U.S.C. 6901, et seq.) on the Right-of-Way (unless the release or threatened release is wholly unrelated to the Right-of-Way holder's activity on the Right-of-Way), or resulting from the activity of the Right-of-Way holder on the Right-of-Way. This agreement applies without regard to whether a release is caused by the holder, its agent, or unrelated third parties.
4. If, during any phase of the construction, operation, maintenance, or termination of the pipeline, any oil or other pollutant should be discharged from the pipeline system, impacting Federal lands, the control and total removal, disposal, and cleaning up of such oil or other

pollutant, wherever found, shall be the responsibility of holder, regardless of fault. Upon failure of holder to control, dispose of, or clean up such discharge on or affecting Federal lands, or to repair all damages resulting therefrom, on the Federal lands, the Authorized Officer may take such measures as he deems necessary to control and clean up the discharge and restore the area, including where appropriate, the aquatic environment and fish and wildlife habitats, at the full expense of the holder. Such action by the Authorized Officer shall not relieve holder of any responsibility as provided herein.

5. All construction and maintenance activity will be confined to the authorized right-of-way.

6. The pipeline will be buried with a minimum cover of 36 inches between the top of the pipe and ground level.

7. The maximum allowable disturbance for construction in this right-of-way will be 30 feet:

- Blading of vegetation within the right-of-way will be allowed: maximum width of blading operations will not exceed 20 feet. The trench is included in this area. (*Blading is defined as the complete removal of brush and ground vegetation.*)
- Clearing of brush species within the right-of-way will be allowed: maximum width of clearing operations will not exceed 30 feet. The trench and bladed area are included in this area. (*Clearing is defined as the removal of brush while leaving ground vegetation (grasses, weeds, etc.) intact. Clearing is best accomplished by holding the blade 4 to 6 inches above the ground surface.*)
- The remaining area of the right-of-way (if any) shall only be disturbed by compressing the vegetation. (*Compressing can be caused by vehicle tires, placement of equipment, etc.*)

8. The holder shall stockpile an adequate amount of topsoil where blading is allowed. The topsoil to be stripped is approximately 6 inches in depth. The topsoil will be segregated from other spoil piles from trench construction. The topsoil will be evenly distributed over the bladed area for the preparation of seeding.

9. The holder shall minimize disturbance to existing fences and other improvements on public lands. The holder is required to promptly repair improvements to at least their former state. Functional use of these improvements will be maintained at all times. The holder will contact the owner of any improvements prior to disturbing them. When necessary to pass through a fence line, the fence shall be braced on both sides of the passageway prior to cutting of the fence. No permanent gates will be allowed unless approved by the Authorized Officer.

10. Vegetation, soil, and rocks left as a result of construction or maintenance activity will be randomly scattered on this right-of-way and will not be left in rows, piles, or berms, unless otherwise approved by the Authorized Officer. The entire right-of-way shall be recontoured to

match the surrounding landscape. The backfilled soil shall be compacted and a 6 inch berm will be left over the ditch line to allow for settling back to grade.

11. In those areas where erosion control structures are required to stabilize soil conditions, the holder will install such structures as are suitable for the specific soil conditions being encountered and which are in accordance with sound resource management practices.

12. The holder will reseed all disturbed areas. Seeding will be done according to the attached seeding requirements, using the following seed mix.

- | | |
|--|--|
| <input type="checkbox"/> seed mixture 1 | <input type="checkbox"/> seed mixture 3 |
| <input type="checkbox"/> seed mixture 2 | <input type="checkbox"/> seed mixture 4 |
| <input checked="" type="checkbox"/> seed mixture 2/LPC | <input type="checkbox"/> Aplomado Falcon Mixture |

13. All above-ground structures not subject to safety requirements shall be painted by the holder to blend with the natural color of the landscape. The paint used shall be color which simulates "Standard Environmental Colors" – **Shale Green**, Munsell Soil Color No. 5Y 4/2.

14. The pipeline will be identified by signs at the point of origin and completion of the right-of-way and at all road crossings. At a minimum, signs will state the holder's name, BLM serial number, and the product being transported. All signs and information thereon will be posted in a permanent, conspicuous manner, and will be maintained in a legible condition for the life of the pipeline.

15. The holder shall not use the pipeline route as a road for purposes other than routine maintenance as determined necessary by the Authorized Officer in consultation with the holder before maintenance begins. The holder will take whatever steps are necessary to ensure that the pipeline route is not used as a roadway. As determined necessary during the life of the pipeline, the Authorized Officer may ask the holder to construct temporary deterrence structures.

16. Any cultural and/or paleontological resources (historic or prehistoric site or object) discovered by the holder, or any person working on his behalf, on public or Federal land shall be immediately reported to the Authorized Officer. Holder shall suspend all operations in the immediate area of such discovery until written authorization to proceed is issued by the Authorized Officer. An evaluation of the discovery will be made by the Authorized Officer to determine appropriate actions to prevent the loss of significant cultural or scientific values. The holder will be responsible for the cost of evaluation and any decision as to proper mitigation measures will be made by the Authorized Officer after consulting with the holder.

17. The operator shall be held responsible if noxious weeds become established within the areas of operations. Weed control shall be required on the disturbed land where noxious weeds exist, which includes associated roads, pipeline corridor and adjacent land affected by the establishment

of weeds due to this action. The operator shall consult with the Authorized Officer for acceptable weed control methods, which include following EPA and BLM requirements and policies.

18. Escape Ramps - The operator will construct and maintain pipeline/utility trenches that are not otherwise fenced, screened, or netted to prevent livestock, wildlife, and humans from becoming entrapped. At a minimum, the operator will construct and maintain escape ramps, ladders, or other methods of avian and terrestrial wildlife escape in the trenches according to the following criteria:

- a. Any trench left open for eight (8) hours or less is not required to have escape ramps; however, before the trench is backfilled, the contractor/operator shall inspect the trench for wildlife, remove all trapped wildlife, and release them at least 100 yards from the trench.
- b. For trenches left open for eight (8) hours or more, earthen escape ramps (built at no more than a 30 degree slope and spaced no more than 500 feet apart) shall be placed in the trench.

IX. INTERIM RECLAMATION

During the life of the development, all disturbed areas not needed for active support of production operations should undergo interim reclamation in order to minimize the environmental impacts of development on other resources and uses.

Within six (6) months of well completion, operators should work with BLM surface management specialists (Jim Amos: 575-234-5909) to devise the best strategies to reduce the size of the location. Interim reclamation should allow for remedial well operations, as well as safe and efficient removal of oil and gas.

During reclamation, the removal of caliche is important to increasing the success of revegetating the site. Removed caliche that is free of contaminants may be used for road repairs, fire walls or for building other roads and locations. In order to operate the well or complete workover operations, it may be necessary to drive, park and operate on restored interim vegetation within the previously disturbed area. Disturbing revegetated areas for production or workover operations will be allowed. If there is significant disturbance and loss of vegetation, the area will need to be revegetated. Communicate with the appropriate BLM office for any exceptions/exemptions if needed.

All disturbed areas after they have been satisfactorily prepared need to be reseeded with the seed mixture provided below.

Upon completion of interim reclamation, the operator shall submit a Sundry Notices and Reports on Wells, Subsequent Report of Reclamation (Form 3160-5).

X. FINAL ABANDONMENT & RECLAMATION

At final abandonment, well locations, production facilities, and access roads must undergo "final" reclamation so that the character and productivity of the land are restored.

Earthwork for final reclamation must be completed within six (6) months of well plugging. All pads, pits, facility locations and roads must be reclaimed to a satisfactory revegetated, safe, and stable condition, unless an agreement is made with the landowner or BLM to keep the road and/or pad intact.

After all disturbed areas have been satisfactorily prepared, these areas need to be revegetated with the seed mixture provided below. Seeding should be accomplished by drilling on the contour whenever practical or by other approved methods. Seeding may need to be repeated until revegetation is successful, as determined by the BLM.

Operators shall contact a BLM surface protection specialist prior to surface abandonment operations for site specific objectives (Jim Amos: 575-234-5909).

Ground-level Abandoned Well Marker to avoid raptor perching: Upon the plugging and subsequent abandonment of the well, the well marker will be installed at ground level on a plate containing the pertinent information for the plugged well.

Seed Mixture for LPC Sand/Shinnery Sites

The holder shall seed all disturbed areas with the seed mixture listed below. The seed mixture shall be planted in the amounts specified in pounds of pure live seed (PLS)* per acre. There shall be no primary or secondary noxious weeds in the seed mixture. Seed will be tested and the viability testing of seed will be done in accordance with State law(s) and within nine (9) months prior to purchase. Commercial seed will be either certified or registered seed. The seed container will be tagged in accordance with State law(s) and available for inspection by the authorized officer.

Seed will be planted using a drill equipped with a depth regulator to ensure proper depth of planting where drilling is possible. The seed mixture will be evenly and uniformly planted over the disturbed area (smaller/heavier seeds have a tendency to drop the bottom of the drill and are planted first). The holder shall take appropriate measures to ensure this does not occur. Where drilling is not possible, seed will be broadcast and the area shall be raked or chained to cover the seed. When broadcasting the seed, the pounds per acre are to be doubled. The seeding will be repeated until a satisfactory stand is established as determined by the authorized officer. Evaluation of growth will not be made before completion of at least one full growing season after seeding.

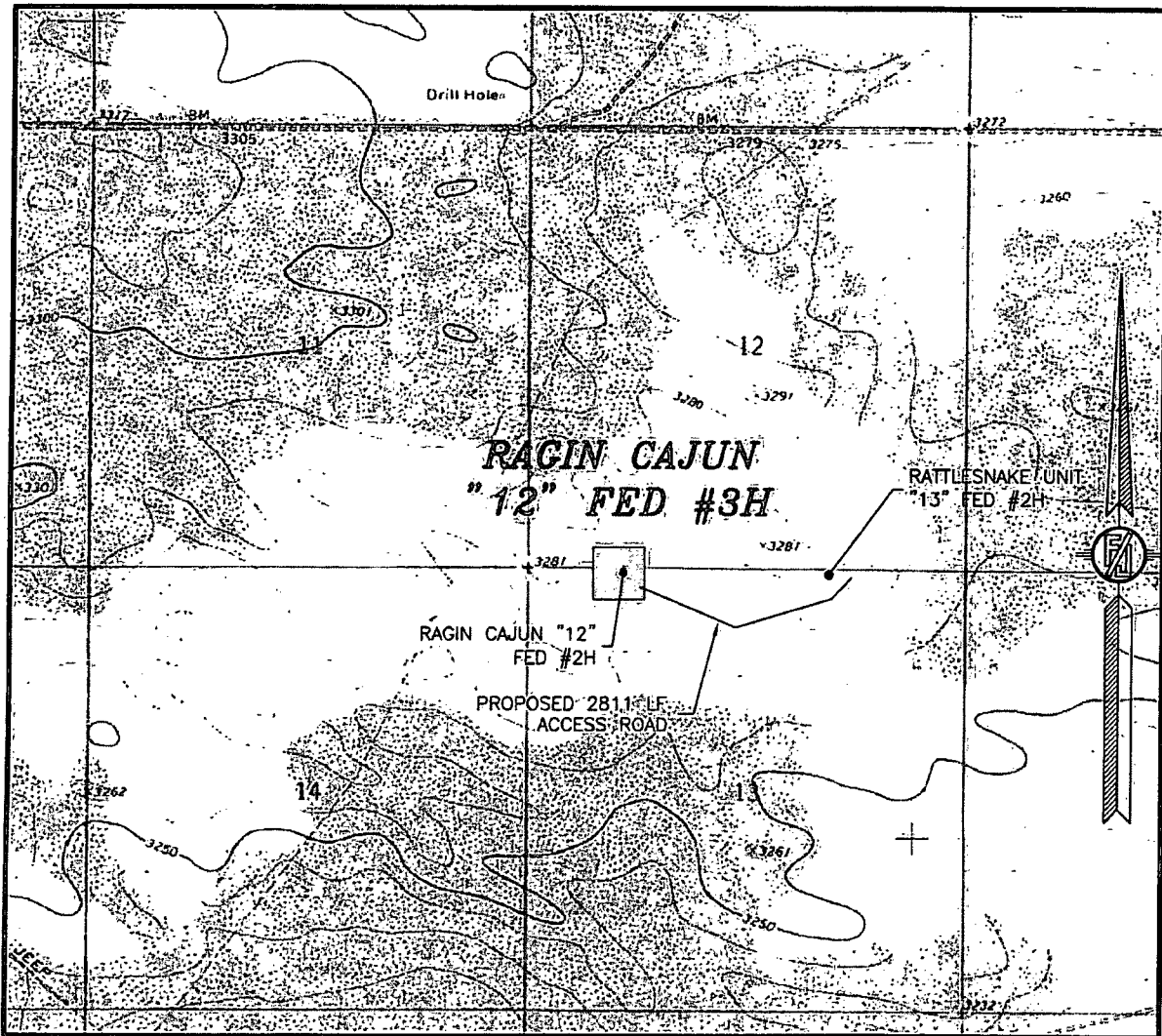
Species to be planted in pounds of pure live seed* per acre:

| <u>Species</u> | <u>lb/acre</u> |
|---------------------|----------------|
| Plains Bristlegrass | 5lbs/A |
| Sand Bluestem | 5lbs/A |
| Little Bluestem | 3lbs/A |
| Big Bluestem | 6lbs/A |
| Plains Coreopsis | 2lbs/A |
| Sand Dropseed | 1lbs/A |

*Pounds of pure live seed:

Pounds of seed x percent purity x percent germination = pounds pure live seed

SECTION 12, TOWNSHIP 26 SOUTH, RANGE 34 EAST, N.M.P.M.
LEA COUNTY, STATE OF NEW MEXICO
LOCATION VERIFICATION MAP



USGS QUAD MAP:
ANDREWS PLACE

NOT TO SCALE

DEVON ENERGY PRODUCTION COMPANY, L.P.

RAGIN CAJUN "12" FED #3H

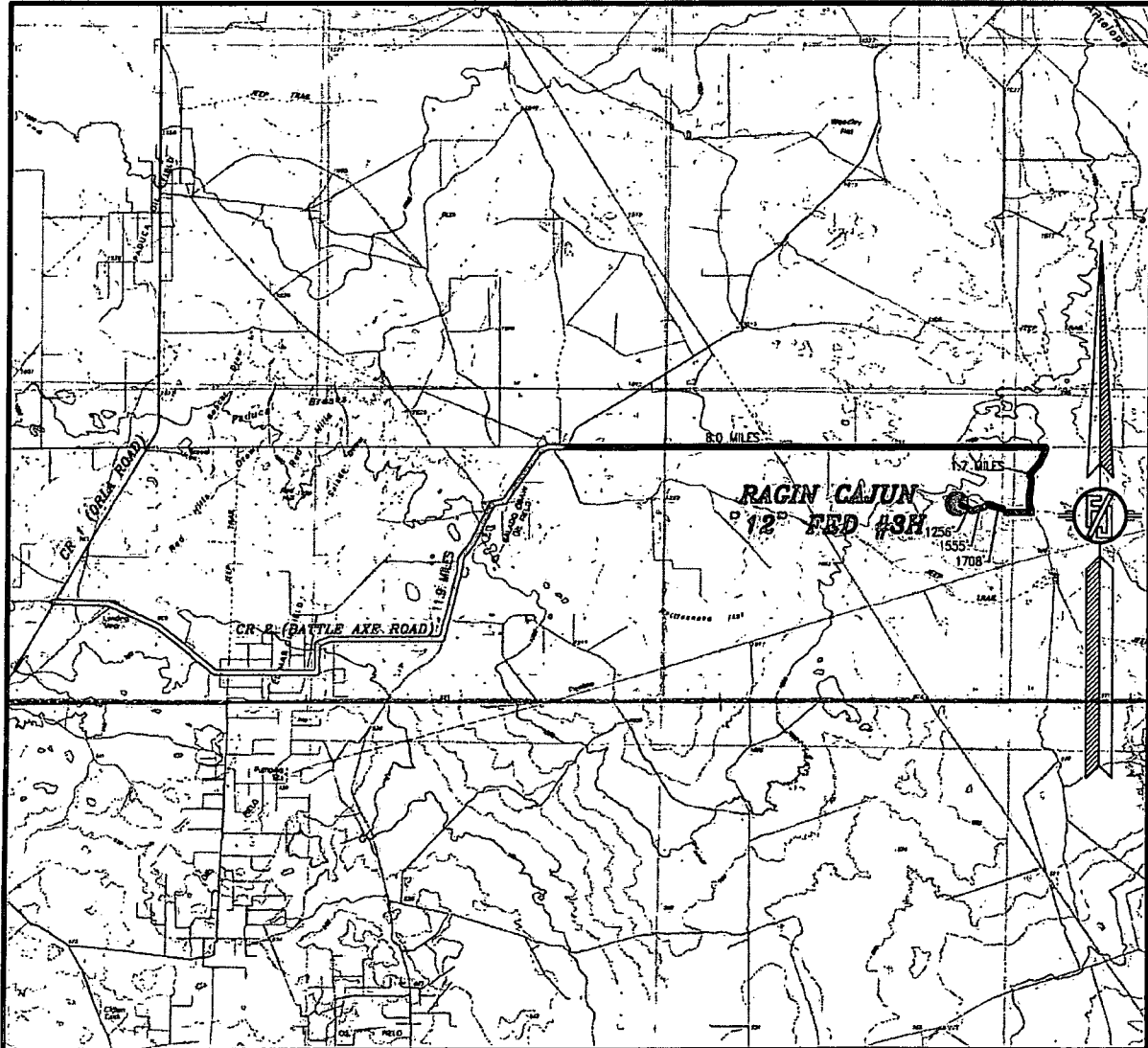
LOCATED 10 FT. FROM THE SOUTH LINE
AND 1085 FT. FROM THE WEST LINE OF
SECTION 12, TOWNSHIP 26 SOUTH,
RANGE 34 EAST, N.M.P.M.
LEA COUNTY, STATE OF NEW MEXICO

APRIL 17, 2014

SURVEY NO. 2897

MADRON SURVEYING, INC. 301 SOUTH CANAL CARLSBAD, NEW MEXICO
(575) 234-3341

SECTION 12, TOWNSHIP 26 SOUTH, RANGE 34 EAST, N.M.P.M.
LEA COUNTY, STATE OF NEW MEXICO
VICINITY MAP



DISTANCES IN MILES

NOT TO SCALE

DEVON ENERGY PRODUCTION COMPANY, L.P.

RAGIN CAJUN "12" FED #3H

LOCATED 10 FT. FROM THE SOUTH LINE
AND 1085 FT. FROM THE WEST LINE OF

SECTION 12, TOWNSHIP 26 SOUTH,

RANGE 34 EAST, N.M.P.M.

LEA COUNTY, STATE OF NEW MEXICO

APRIL 17, 2014

DIRECTIONS TO LOCATION

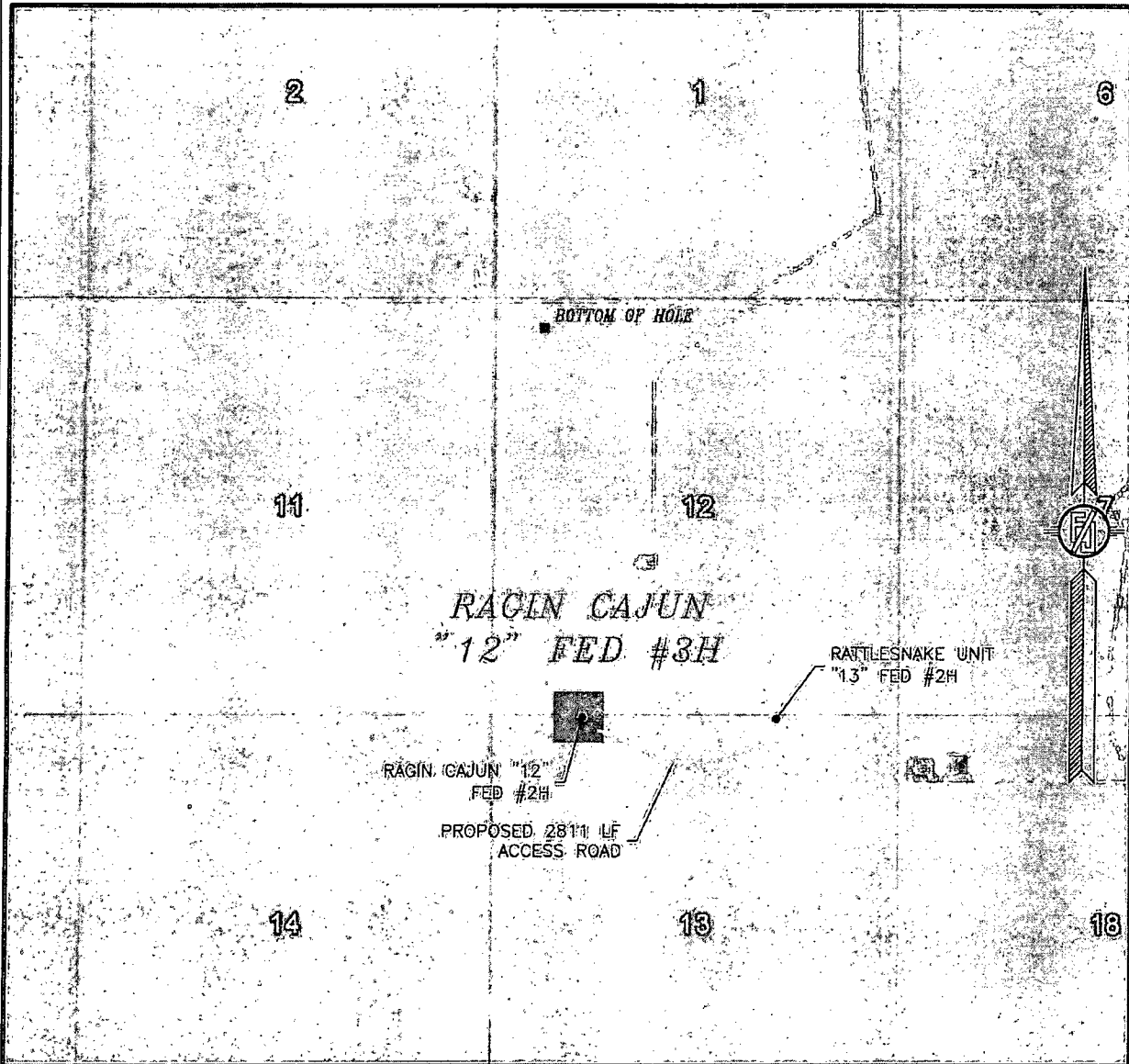
FROM THE INTERSECTION OF CR 1 (ORLA ROAD) AND CR 2 (BATTLE AXE ROAD) GO EAST ON CR 2 11.9 MILES WHERE ROAD BENDS NORTH AND CONTINUE EAST ON CALICHE PIPE LINE ROAD (EL PASO R/W), GO EAST 8 MILES TO LEASE ROAD GO SOUTH (RIGHT) 1.7 MILES TO YATES WELL "RENEGADE" FROM SOUTHWEST CORNER, FOLLOW FLAGS NORTHWEST 1708' TO RATTLESNAKE UNIT "13" FED #2H, THEN AT SOUTHEAST-EAST PAD CORNER FOLLOW PROPOSED ROAD SURVEY FLAGS SOUTHWEST 1555', THEN NORTHWEST 1256' TO THE PROPOSED SOUTHEAST CORNER OF PAD FOR THIS LOCATION.

SURVEY NO. 2897

MADRON SURVEYING, INC. 301 SOUTH CANAL (575) 234-3341

CARLSBAD, NEW MEXICO

SECTION 12, TOWNSHIP 26 SOUTH, RANGE 34 EAST, N.M.P.M.
LEA COUNTY, STATE OF NEW MEXICO
AERIAL PHOTO



NOT TO SCALE
AERIAL PHOTO:
GOOGLE EARTH
APRIL 2013

DEVON ENERGY PRODUCTION COMPANY, L.P.

RAGIN CAJUN "12" FED #3H

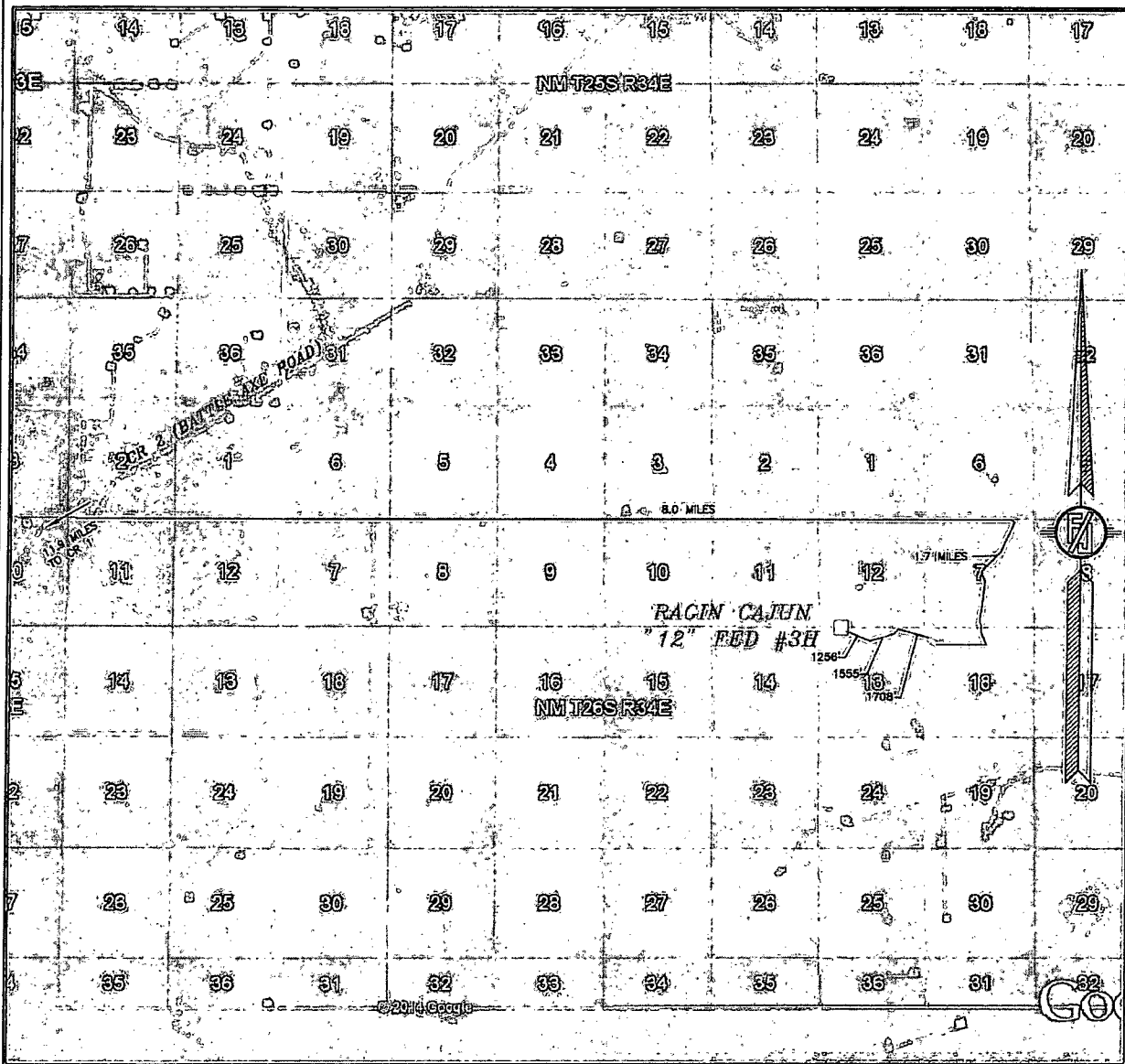
LOCATED 10 FT. FROM THE SOUTH LINE
AND 1085 FT. FROM THE WEST LINE OF
SECTION 12, TOWNSHIP 26 SOUTH,
RANGE 34 EAST, N.M.P.M.
LEA COUNTY, STATE OF NEW MEXICO

APRIL 17, 2014

SURVEY NO. 2897

MADRON SURVEYING, INC. 301 SOUTH CANAL CARLSBAD, NEW MEXICO
(575) 234-3341

SECTION 12, TOWNSHIP 26 SOUTH, RANGE 34 EAST, N.M.P.M.
LEA COUNTY, STATE OF NEW MEXICO
ACCESS AERIAL ROUTE MAP



NOT TO SCALE
AERIAL PHOTO:
GOOGLE EARTH
APRIL 2013

DEVON ENERGY PRODUCTION COMPANY, L.P.

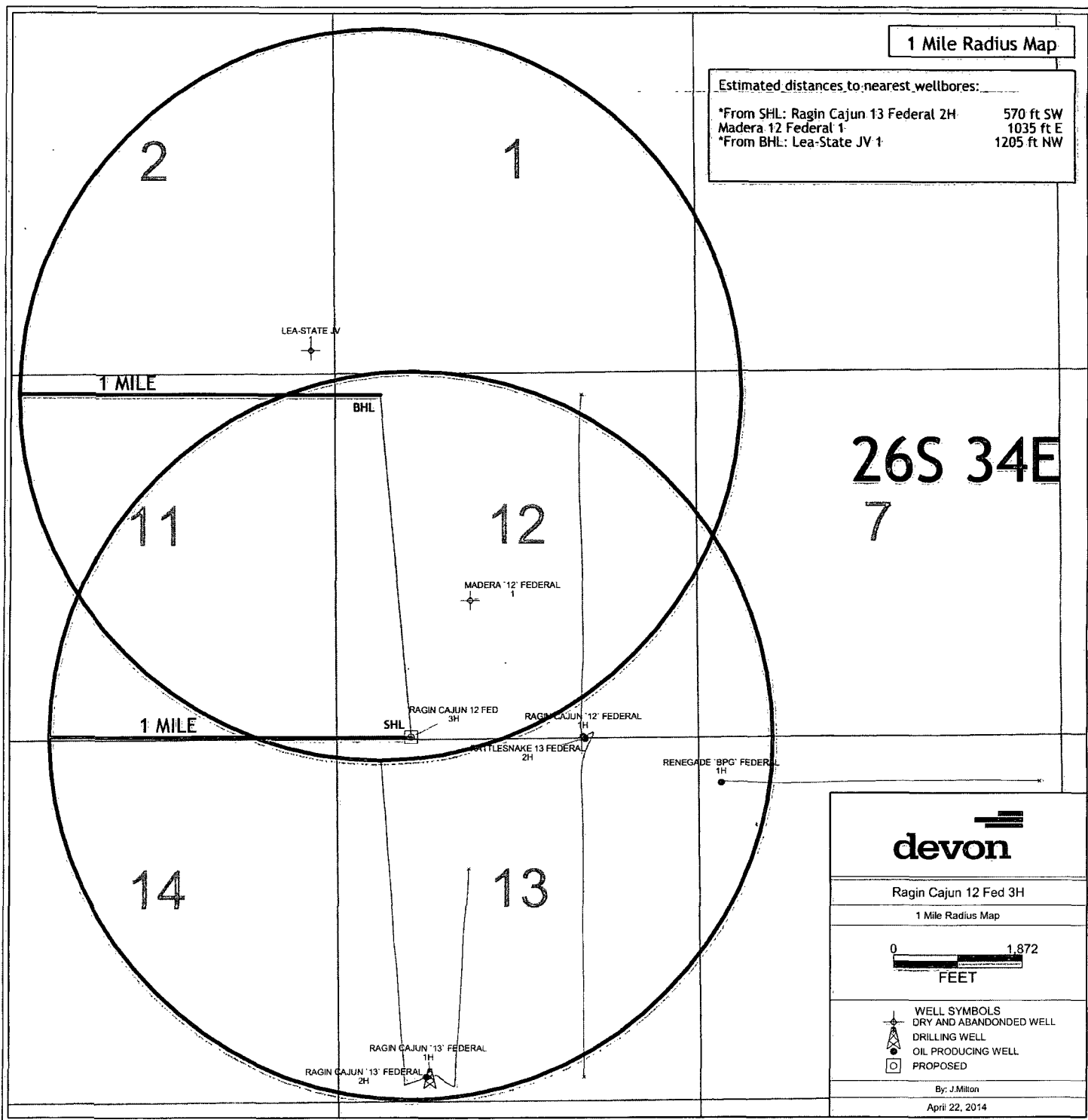
RAGIN CAJUN "12" FED #3H

LOCATED 10 FT. FROM THE SOUTH LINE
AND 1085 FT. FROM THE WEST LINE OF
SECTION 12, TOWNSHIP 26 SOUTH,
RANGE 34 EAST, N.M.P.M.
LEA COUNTY, STATE OF NEW MEXICO

APRIL 17, 2014

SURVEY NO. 2897

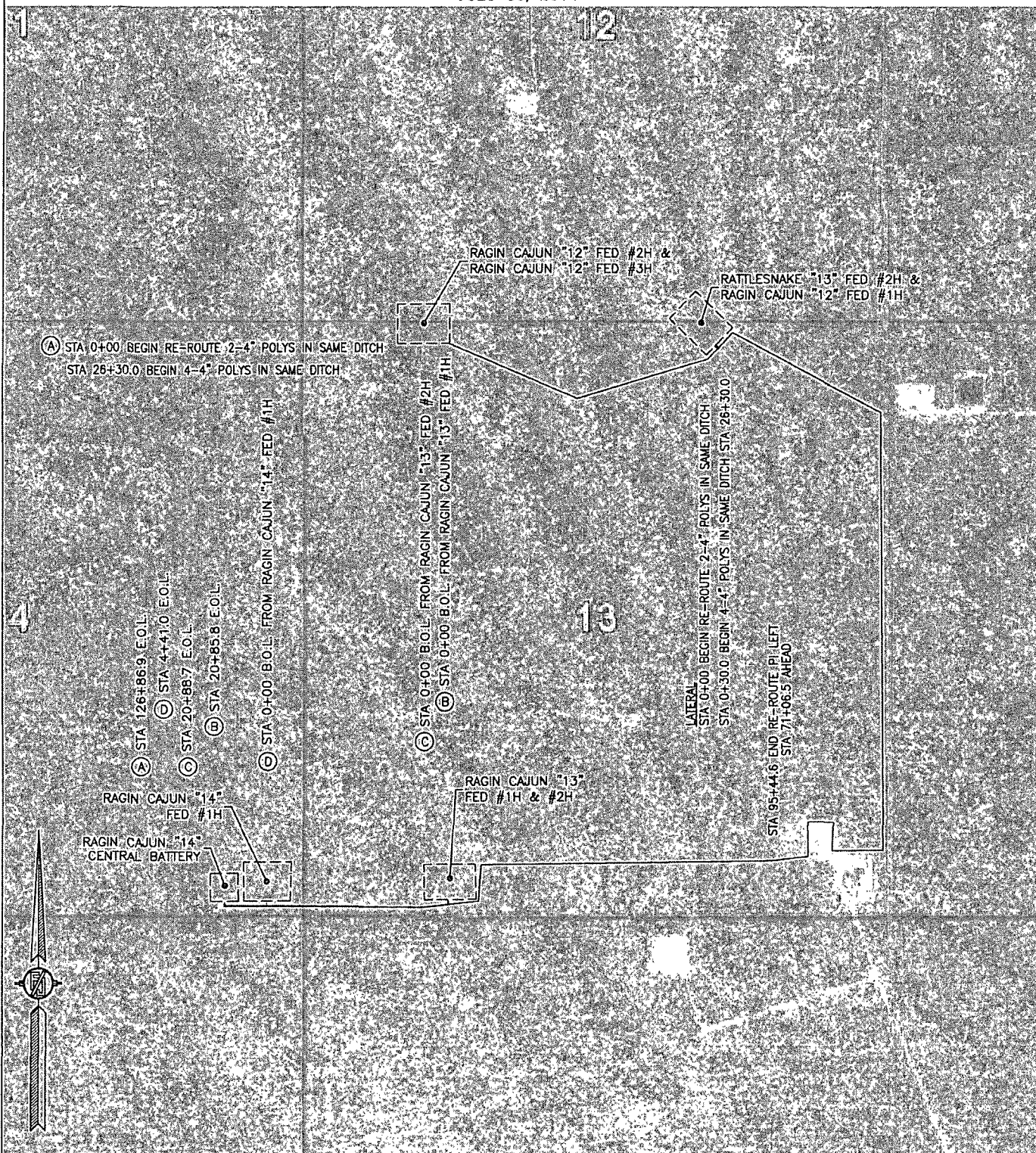
MADRON SURVEYING, INC. 301 SOUTH CANAL CARLSBAD, NEW MEXICO
(575) 234-3341



FLOWLINE PLAT

RE-ROUTE 2-4" BURIED IN SAME DITCH POLY FIBER FLEX FLOW LINES FROM THE RAGIN CAJUN "12" FED #2H, RAGIN CAJUN "12" FED #3H & RE-ROUTE 2-4" BURIED IN SAME DITCH POLY FIBER FLEX FLOW LINES FROM THE RATTLESNAKE "13" FED #2H, RAGIN CAJUN "12" FED #1H TO MAKE 4-4" BURIED IN SAME DITCH POLY FIBER FLEX FLOW LINES & 4" BURIED FIBER FLEX POLY FLOW LINE FROM THE RAGIN CAJUN "13" FED #1H & 4" BURIED FIBER FLEX POLY FLOW LINE FROM THE RAGIN CAJUN "13" FED #2H & 4" BURIED FIBER FLEX POLY FLOW LINE FROM THE RAGIN CAJUN "14" FED #1H TO THE RAGIN CAJUN "14" CENTRAL BATTERY

DEVON ENERGY PRODUCTION COMPANY, L.P.
CENTERLINE SURVEY OF A PIPELINE CROSSING
SECTION 13, 14, TOWNSHIP 26 SOUTH, RANGE 34 EAST, N.M.P.M.
LEA COUNTY, STATE OF NEW MEXICO
JULY 30, 2014

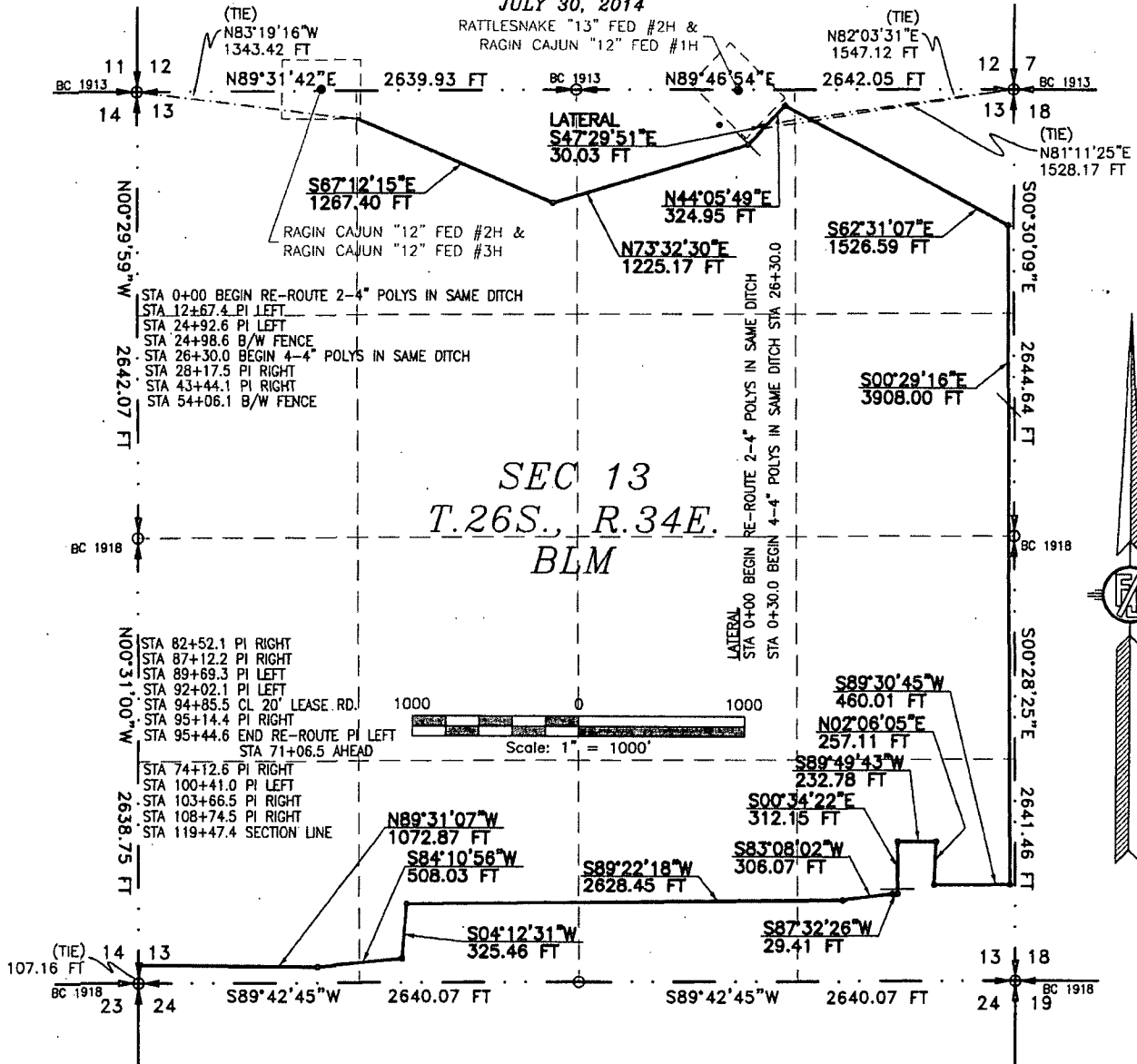


FLOWLINE PLAT

RE-ROUTE 2-4" BURIED IN SAME DITCH POLY FIBER FLEX FLOW LINES FROM THE RAGIN CAJUN "12" FED #2H, RAGIN CAJUN "12" FED #3H & RE-ROUTE 2-4" BURIED IN SAME DITCH POLY FIBER FLEX FLOW LINES FROM THE RATTLESNAKE "13" FED #2H, RAGIN CAJUN "12" FED #1H TO MAKE 4-4" BURIED IN SAME DITCH POLY FIBER FLEX FLOW LINES & 4" BURIED FIBER FLEX POLY FLOW LINE FROM THE RAGIN CAJUN "13" FED #1H & 4" BURIED FIBER FLEX POLY FLOW LINE FROM THE RAGIN CAJUN "13" FED #2H & 4" BURIED FIBER FLEX POLY FLOW LINE FROM THE RAGIN CAJUN "14" FED #1H TO THE RAGIN CAJUN "14" CENTRAL BATTERY

DEVON ENERGY PRODUCTION COMPANY, L.P. CENTERLINE SURVEY OF A PIPELINE CROSSING SECTION 13, TOWNSHIP 26 SOUTH, RANGE 34 EAST, N.M.P.M. LEA COUNTY, STATE OF NEW MEXICO

JULY 30, 2014



SEE NEXT SHEET (2-16) FOR DESCRIPTION
SURVEYOR CERTIFICATE

GENERAL NOTES

- 1.) THE INTENT OF THIS ROUTE SURVEY IS TO ACQUIRE AN EASEMENT.
- 2.) BASIS OF BEARING IS NMSP EAST MODIFIED TO SURFACE COORDINATES.

I, FILMON F. JARAMILLO, A NEW MEXICO PROFESSIONAL SURVEYOR NO. 12797, HEREBY CERTIFY THAT I HAVE CONDUCTED AND AM RESPONSIBLE FOR THIS SURVEY, THAT THIS SURVEY IS TRUE AND CORRECT TO THE BEST OF MY KNOWLEDGE AND BELIEF, AND THAT THIS SURVEY AND PLAT MEET THE MINIMUM STANDARDS FOR LAND SURVEYING IN THE STATE OF NEW MEXICO.

IN WITNESS WHEREOF, THIS CERTIFICATE IS EXECUTED AT CARLSBAD, NEW MEXICO, THIS DAY OF AUGUST 2014

FILMON F. JARAMILLO, PLS. 12797
REGISTERED PROFESSIONAL SURVEYOR

MADRON SURVEYING, INC.
301 SOUTH CANAL
CARLSBAD, NEW MEXICO 88220
Phone (575) 234-3341

SHEET: 1-16

MADRON SURVEYING, INC. CARLSBAD, NEW MEXICO

SURVEY NO. 2680C

FLOWLINE PLAT

RE-ROUTE 2-4" BURIED IN SAME DITCH POLY FIBER FLEX FLOW LINES FROM THE RAGIN CAJUN "12" FED #2H, RAGIN CAJUN "12" FED #3H & RE-ROUTE 2-4" BURIED IN SAME DITCH POLY FIBER FLEX FLOW LINES FROM THE RATTLESNAKE "13" FED #2H, RAGIN CAJUN "12" FED #1H TO MAKE 4-4" BURIED IN SAME DITCH POLY FIBER FLEX FLOW LINES & 4" BURIED FIBER FLEX POLY FLOW LINE FROM THE RAGIN CAJUN "13" FED #1H & 4" BURIED FIBER FLEX POLY FLOW LINE FROM THE RAGIN CAJUN "13" FED #2H & 4" BURIED FIBER FLEX POLY FLOW LINE FROM THE RAGIN CAJUN "14" FED #1H TO THE RAGIN CAJUN "14" CENTRAL BATTERY

DEVON ENERGY PRODUCTION COMPANY, L.P.
CENTERLINE SURVEY OF A PIPELINE CROSSING
SECTION 13, TOWNSHIP 26 SOUTH, RANGE 34 EAST, N.M.P.M.
LEA COUNTY, STATE OF NEW MEXICO
JULY 30, 2014

DESCRIPTION

A STRIP OF LAND 30 FEET WIDE CROSSING BUREAU OF LAND MANAGEMENT LAND IN SECTION 13, TOWNSHIP 26 SOUTH, RANGE 34 EAST, N.M.P.M., LEA COUNTY, STATE OF NEW MEXICO AND BEING 15 FEET EACH SIDE OF THE FOLLOWING DESCRIBED CENTERLINE SURVEY:

BEGINNING AT A POINT WITHIN THE NE/4 NW/4 OF SAID SECTION 13, TOWNSHIP 26 SOUTH, RANGE 34 EAST, N.M.P.M., WHENCE THE NORTHWEST CORNER OF SAID SECTION 13, TOWNSHIP 26 SOUTH, RANGE 34 EAST, N.M.P.M. BEARS N83°19'16"W, A DISTANCE OF 1343.42 FEET;

THENCE S67°12'15"E A DISTANCE OF 1267.40 FEET TO AN ANGLE POINT OF THE LINE HEREIN DESCRIBED;
THENCE N73°32'30"E A DISTANCE OF 1225.17 FEET TO AN ANGLE POINT OF THE LINE HEREIN DESCRIBED;
THENCE N44°05'49"E A DISTANCE OF 324.95 FEET TO AN ANGLE POINT OF THE LINE HEREIN DESCRIBED;
THENCE S62°31'07"E A DISTANCE OF 1526.59 FEET TO AN ANGLE POINT OF THE LINE HEREIN DESCRIBED;
THENCE S00°29'16"E A DISTANCE OF 3908.00 FEET TO AN ANGLE POINT OF THE LINE HEREIN DESCRIBED;
THENCE S89°30'45"W A DISTANCE OF 460.01 FEET TO AN ANGLE POINT OF THE LINE HEREIN DESCRIBED;
THENCE N02°06'05"E A DISTANCE OF 257.11 FEET TO AN ANGLE POINT OF THE LINE HEREIN DESCRIBED;
THENCE S89°49'43"W A DISTANCE OF 232.78 FEET TO AN ANGLE POINT OF THE LINE HEREIN DESCRIBED;
THENCE S00°34'22"E A DISTANCE OF 312.15 FEET TO AN ANGLE POINT OF THE LINE HEREIN DESCRIBED;
THENCE S87°32'26"W A DISTANCE OF 29.41 FEET TO AN ANGLE POINT OF THE LINE HEREIN DESCRIBED;
THENCE S83°08'02"W A DISTANCE OF 306.07 FEET TO AN ANGLE POINT OF THE LINE HEREIN DESCRIBED;
THENCE S89°22'18"W A DISTANCE OF 2628.45 FEET TO AN ANGLE POINT OF THE LINE HEREIN DESCRIBED;
THENCE S04°12'31"W A DISTANCE OF 325.46 FEET TO AN ANGLE POINT OF THE LINE HEREIN DESCRIBED;
THENCE S84°10'56"W A DISTANCE OF 508.03 FEET TO AN ANGLE POINT OF THE LINE HEREIN DESCRIBED;
THENCE N89°31'07"W A DISTANCE OF 1072.87 FEET THE TERMINUS OF THIS CENTERLINE SURVEY, WHENCE THE SOUTHWEST CORNER OF SAID SECTION 13, TOWNSHIP 26 SOUTH, RANGE 34 EAST, N.M.P.M. BEARS S00°31'00"E, A DISTANCE OF 107.16 FEET;

SAID STRIP OF LAND BEING 14384.45 FEET OR 871.78 RODS IN LENGTH, CONTAINING 9.908 ACRES MORE OR LESS AND BEING ALLOCATED BY FORTIES AS FOLLOWS:

| | | | |
|-----------|--------------|-------------|-------------|
| NE/4 NW/4 | 1417.91 L.F. | 85.93 RODS | 0.977 ACRES |
| NW/4 NE/4 | 1467.01 L.F. | 88.91 RODS | 1.010 ACRES |
| NE/4 NE/4 | 1977.80 L.F. | 119.87 RODS | 1.362 ACRES |
| SE/4 NE/4 | 1322.34 L.F. | 80.14 RODS | 0.911 ACRES |
| NE/4 SE/4 | 1320.72 L.F. | 80.04 RODS | 0.910 ACRES |
| SE/4 SE/4 | 2617.40 L.F. | 158.63 RODS | 1.803 ACRES |
| SW/4 SE/4 | 1320.18 L.F. | 80.01 RODS | 0.909 ACRES |
| SE/4 SW/4 | 1619.84 L.F. | 98.17 RODS | 1.116 ACRES |
| SW/4 SW/4 | 1321.25 L.F. | 80.08 RODS | 0.910 ACRES |

LATERAL

BEGINNING AT A POINT WITHIN THE NW/4 NE/4 OF SAID SECTION 13, TOWNSHIP 26 SOUTH, RANGE 34 EAST, N.M.P.M., WHENCE THE NORTHEAST CORNER OF SAID SECTION 13, TOWNSHIP 26 SOUTH, RANGE 34 EAST, N.M.P.M. BEARS N82°03'31"E, A DISTANCE OF 1547.12 FEET;

THENCE S47°29'51"E A DISTANCE OF 30.03 FEET THE TERMINUS OF THIS CENTERLINE SURVEY, WHENCE THE NORTHEAST CORNER OF SAID SECTION 13, TOWNSHIP 26 SOUTH, RANGE 34 EAST, N.M.P.M. BEARS N81°11'25"E, A DISTANCE OF 1528.17 FEET;

SAID STRIP OF LAND BEING 30.03 FEET OR 1.82 RODS IN LENGTH, CONTAINING 0.021 ACRES MORE OR LESS AND BEING ALLOCATED BY FORTIES AS FOLLOWS:

NW/4 NE/4 30.03 L.F. 1.82 RODS 0.021 ACRES

SURVEYOR CERTIFICATE

I, FILMON F. JARAMILLO, A NEW MEXICO PROFESSIONAL SURVEYOR NO. 12797, HEREBY CERTIFY THAT I HAVE CONDUCTED AND AM RESPONSIBLE FOR THIS SURVEY, THAT THIS SURVEY IS TRUE AND CORRECT TO THE BEST OF MY KNOWLEDGE AND BELIEF, AND THAT THIS SURVEY AND PLAT MEET THE MINIMUM STANDARDS FOR LAND SURVEYING IN THE STATE OF NEW MEXICO.

IN WITNESS WHEREOF, THIS CERTIFICATE IS EXECUTED AT CARLSBAD,

NEW MEXICO, THIS 22 DAY OF AUGUST, 2014


FILMON F. JARAMILLO, PLS 12797

MADRON SURVEYING, INC.
301 SOUTH CANAL
CARLSBAD, NEW MEXICO 88220
Phone (575) 234-3341

SURVEY NO. 2680C

GENERAL NOTES

1.) THE INTENT OF THIS ROUTE SURVEY IS TO ACQUIRE AN EASEMENT.

2.) BASIS OF BEARING IS NMSP EAST MODIFIED TO SURFACE COORDINATES.

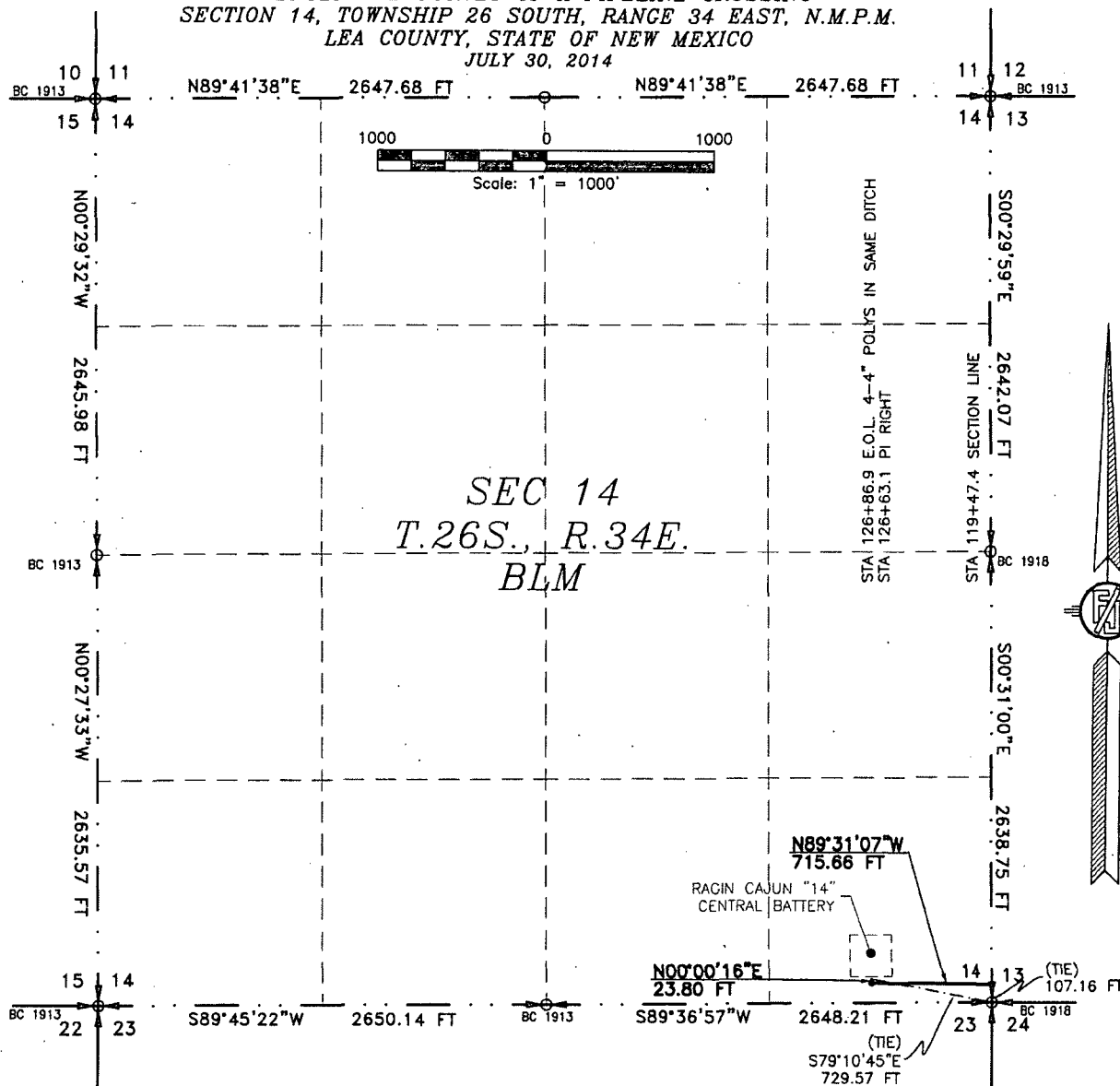
SHEET: 2-16

MADRON SURVEYING, INC. 301 SOUTH CANAL CARLSBAD, NEW MEXICO (575) 234-3341

FLOWLINE PLAT

RE-ROUTE 2-4" BURIED IN SAME DITCH POLY FIBER FLEX FLOW LINES FROM THE RAGIN CAJUN "12" FED #2H, RAGIN CAJUN "12" FED #3H & RE-ROUTE 2-4" BURIED IN SAME DITCH POLY FIBER FLEX FLOW LINES FROM THE RATTLESNAKE "13" FED #2H, RAGIN CAJUN "12" FED #1H TO MAKE 4-4" BURIED IN SAME DITCH POLY FIBER FLEX FLOW LINES & 4" BURIED FIBER FLEX POLY FLOW LINE FROM THE RAGIN CAJUN "13" FED #1H & 4" BURIED FIBER FLEX POLY FLOW LINE FROM THE RAGIN CAJUN "13" FED #2H & 4" BURIED FIBER FLEX POLY FLOW LINE FROM THE RAGIN CAJUN "14" FED #1H TO THE RAGIN CAJUN "14" CENTRAL BATTERY

DEVON ENERGY PRODUCTION COMPANY, L.P.
CENTERLINE SURVEY OF A PIPELINE CROSSING
SECTION 14, TOWNSHIP 26 SOUTH, RANGE 34 EAST, N.M.P.M.
LEA COUNTY, STATE OF NEW MEXICO
JULY 30, 2014



SEE NEXT SHEET (4-16) FOR DESCRIPTION

SURVEYOR CERTIFICATE

I, FILMON F. JARAMILLO, A NEW MEXICO PROFESSIONAL SURVEYOR NO. 12797, HEREBY CERTIFY THAT I HAVE CONDUCTED AND AM RESPONSIBLE FOR THIS SURVEY, THAT THIS SURVEY IS TRUE AND CORRECT TO THE BEST OF MY KNOWLEDGE AND BELIEF, AND THAT THIS SURVEY AND PLAT MEET THE MINIMUM STANDARDS FOR LAND SURVEYING IN THE STATE OF NEW MEXICO.

IN WITNESS WHEREOF, THIS CERTIFICATE IS EXECUTED AT CARLSBAD,

NEW MEXICO, THIS 14TH DAY OF AUGUST 2014

GENERAL NOTES

1.) THE INTENT OF THIS ROUTE SURVEY IS TO ACQUIRE AN EASEMENT.

2.) BASIS OF BEARING IS NMSP EAST MODIFIED TO SURFACE COORDINATES.

MADRON SURVEYING, INC.
301 SOUTH CANAL
CARLSBAD, NEW MEXICO 88220
Phone (575) 234-3341

SHEET: 3-16

MADRON SURVEYING, INC. CARLSBAD, NEW MEXICO

SURVEY NO. 2680C

FLOWLINE PLAT

RE-ROUTE 2-4" BURIED IN SAME DITCH POLY FIBER FLEX FLOW LINES FROM THE RAGIN CAJUN "12" FED #2H, RAGIN CAJUN "12" FED #3H & RE-ROUTE 2-4" BURIED IN SAME DITCH POLY FIBER FLEX FLOW LINES FROM THE RATTLESNAKE "13" FED #2H, RAGIN CAJUN "12" FED #1H TO MAKE 4-4" BURIED IN SAME DITCH POLY FIBER FLEX FLOW LINES & 4" BURIED FIBER FLEX POLY FLOW LINE FROM THE RAGIN CAJUN "13" FED #1H & 4" BURIED FIBER FLEX POLY FLOW LINE FROM THE RAGIN CAJUN "13" FED #2H & 4" BURIED FIBER FLEX POLY FLOW LINE FROM THE RAGIN CAJUN "14" FED #1H TO THE RAGIN CAJUN "14" CENTRAL BATTERY

DEVON ENERGY PRODUCTION COMPANY, L.P.
CENTERLINE SURVEY OF A PIPELINE CROSSING
SECTION 14, TOWNSHIP 26 SOUTH, RANGE 34 EAST, N.M.P.M.
LEA COUNTY, STATE OF NEW MEXICO
JULY 30, 2014

DESCRIPTION

A STRIP OF LAND 30 FEET WIDE CROSSING BUREAU OF LAND MANAGEMENT LAND IN SECTION 14, TOWNSHIP 26 SOUTH, RANGE 34 EAST, N.M.P.M., LEA COUNTY, STATE OF NEW MEXICO AND BEING 15 FEET EACH SIDE OF THE FOLLOWING DESCRIBED CENTERLINE SURVEY:

BEGINNING AT A POINT WITHIN THE SE/4 SE/4 OF SAID SECTION 14, TOWNSHIP 26 SOUTH, RANGE 34 EAST, N.M.P.M., WHENCE THE SOUTHEAST CORNER OF SAID SECTION 14, TOWNSHIP 26 SOUTH, RANGE 34 EAST, N.M.P.M. BEARS S00°31'00"E, A DISTANCE OF 107.16 FEET;
THENCE N89°31'07"W A DISTANCE OF 715.66 FEET TO AN ANGLE POINT OF THE LINE HEREIN DESCRIBED;
THENCE N00°00'16"E A DISTANCE OF 23.80 FEET THE TERMINUS OF THIS CENTERLINE SURVEY, WHENCE THE SOUTHEAST CORNER OF SAID SECTION 14, TOWNSHIP 26 SOUTH, RANGE 34 EAST, N.M.P.M. BEARS S79°10'45"E, A DISTANCE OF 729.57 FEET;

SAID STRIP OF LAND BEING 739.46 FEET OR 44.82 RODS IN LENGTH, CONTAINING 0.509 ACRES MORE OR LESS AND BEING ALLOCATED BY FORTIES AS FOLLOWS:

SE/4 SE/4 739.46 L.F. 44.82 RODS 0.509 ACRES

SURVEYOR CERTIFICATE

I, FILIMON F. JARAMILLO, A NEW MEXICO PROFESSIONAL SURVEYOR NO. 12797, HEREBY CERTIFY THAT I HAVE CONDUCTED AND AM RESPONSIBLE FOR THIS SURVEY, THAT THIS SURVEY IS TRUE AND CORRECT TO THE BEST OF MY KNOWLEDGE AND BELIEF, AND THAT THIS SURVEY AND PLAT MEET THE MINIMUM STANDARDS FOR LAND SURVEYING IN THE STATE OF NEW MEXICO.

IN WITNESS WHEREOF, THIS CERTIFICATE IS EXECUTED AT CARLSBAD,

NEW MEXICO, THIS 12TH DAY OF AUGUST 2014

GENERAL NOTES

1.) THE INTENT OF THIS ROUTE SURVEY IS TO ACQUIRE AN EASEMENT.

2.) BASIS OF BEARING IS NMSP EAST MODIFIED TO SURFACE COORDINATES.

MADRON SURVEYING, INC.
301 SOUTH CANAL
CARLSBAD, NEW MEXICO 88220
Phone (575) 234-3341

SHEET: 4-16

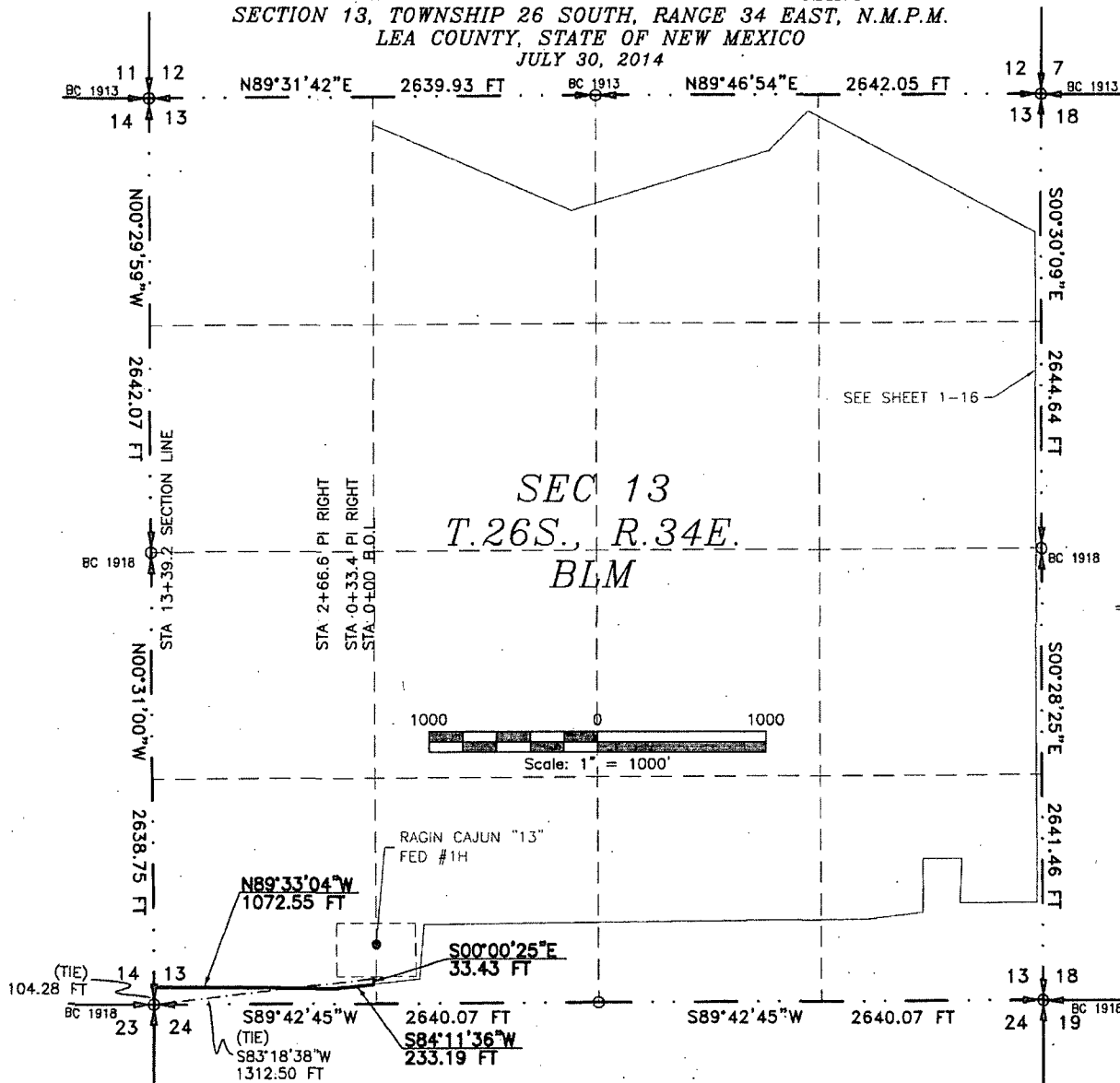
MADRON SURVEYING, INC. 301 SOUTH CANAL (575) 234-3341 CARLSBAD, NEW MEXICO

SURVEY NO. 2680C

FLOWLINE PLAT

RE-ROUTE 2-4" BURIED IN SAME DITCH POLY FIBER FLEX FLOW LINES FROM THE RAGIN CAJUN "12" FED #2H, RAGIN CAJUN "12" FED #3H & RE-ROUTE 2-4" BURIED IN SAME DITCH POLY FIBER FLEX FLOW LINES FROM THE RATTLESNAKE "13" FED #2H, RAGIN CAJUN "12" FED #1H TO MAKE 4-4" BURIED IN SAME DITCH POLY FIBER FLEX FLOW LINES & 4" BURIED FIBER FLEX POLY FLOW LINE FROM THE RAGIN CAJUN "13" FED #1H & 4" BURIED FIBER FLEX POLY FLOW LINE FROM THE RAGIN CAJUN "13" FED #2H & 4" BURIED FIBER FLEX POLY FLOW LINE FROM THE RAGIN CAJUN "14" FED #1H TO THE RAGIN CAJUN "14" CENTRAL BATTERY

DEVON ENERGY PRODUCTION COMPANY, L.P.
CENTERLINE SURVEY OF A PIPELINE CROSSING
SECTION 13, TOWNSHIP 26 SOUTH, RANGE 34 EAST, N.M.P.M.
LEA COUNTY, STATE OF NEW MEXICO
JULY 30, 2014



SEE NEXT SHEET (6-16) FOR DESCRIPTION

SURVEYOR CERTIFICATE

I, FILMON F. JARAMILLO, A NEW MEXICO PROFESSIONAL SURVEYOR NO. 12797, HEREBY CERTIFY THAT I HAVE CONDUCTED AND AM RESPONSIBLE FOR THIS SURVEY, THAT THIS SURVEY IS TRUE AND CORRECT TO THE BEST OF MY KNOWLEDGE AND BELIEF, AND THAT THIS SURVEY AND PLAT MEET THE MINIMUM STANDARDS FOR LAND SURVEYING IN THE STATE OF NEW MEXICO.

IN WITNESS WHEREOF, THIS CERTIFICATE IS EXECUTED AT CARLSBAD,

NEW MEXICO, THIS DAY OF AUGUST 2014

GENERAL NOTES

- 1.) THE INTENT OF THIS ROUTE SURVEY IS TO ACQUIRE AN EASEMENT.
- 2.) BASIS OF BEARING IS NMSP EAST MODIFIED TO SURFACE COORDINATES.

MADRON SURVEYING, INC.
301 SOUTH CANAL
CARLSBAD, NEW MEXICO 88220
Phone (575) 234-3341

SHEET: 5-16

MADRON SURVEYING, INC.

301 SOUTH CANAL
(575) 234-3341

CARLSBAD, NEW MEXICO

SURVEY NO. 2680C

FLOWLINE PLAT

RE-ROUTE 2-4" BURIED IN SAME DITCH POLY FIBER FLEX FLOW LINES FROM THE RAGIN CAJUN "12" FED #2H, RAGIN CAJUN "12" FED #3H & RE-ROUTE 2-4" BURIED IN SAME DITCH POLY FIBER FLEX FLOW LINES FROM THE RATTLESNAKE "13" FED #2H, RAGIN CAJUN "12" FED #1H TO MAKE 4-4" BURIED IN SAME DITCH POLY FIBER FLEX FLOW LINES & 4" BURIED FIBER FLEX POLY FLOW LINE FROM THE RAGIN CAJUN "13" FED #1H & 4" BURIED FIBER FLEX POLY FLOW LINE FROM THE RAGIN CAJUN "13" FED #2H & 4" BURIED FIBER FLEX POLY FLOW LINE FROM THE RAGIN CAJUN "14" FED #1H TO THE RAGIN CAJUN "14" CENTRAL BATTERY

DEVON ENERGY PRODUCTION COMPANY, L.P.
CENTERLINE SURVEY OF A PIPELINE CROSSING
SECTION 13, TOWNSHIP 26 SOUTH, RANGE 34 EAST, N.M.P.M.
LEA COUNTY, STATE OF NEW MEXICO
JULY 30, 2014

DESCRIPTION

A STRIP OF LAND 30 FEET WIDE CROSSING BUREAU OF LAND MANAGEMENT LAND IN SECTION 13, TOWNSHIP 26 SOUTH, RANGE 34 EAST, N.M.P.M., LEA COUNTY, STATE OF NEW MEXICO AND BEING 15 FEET EACH SIDE OF THE FOLLOWING DESCRIBED CENTERLINE SURVEY:

BEGINNING AT A POINT WITHIN THE SW/4 SW/4 OF SAID SECTION 13, TOWNSHIP 26 SOUTH, RANGE 34 EAST, N.M.P.M., WHENCE THE SOUTHWEST CORNER OF SAID SECTION 13, TOWNSHIP 26 SOUTH, RANGE 34 EAST, N.M.P.M. BEARS S83°18'38"W, A DISTANCE OF 1312.50 FEET;
THENCE S00°00'25"E A DISTANCE OF 33.43 FEET TO AN ANGLE POINT OF THE LINE HEREIN DESCRIBED;
THENCE S84°11'36"W A DISTANCE OF 233.19 FEET TO AN ANGLE POINT OF THE LINE HEREIN DESCRIBED;
THENCE N89°33'04"W A DISTANCE OF 1072.55 FEET THE TERMINUS OF THIS CENTERLINE SURVEY, WHENCE THE SOUTHWEST CORNER OF SAID SECTION 13, TOWNSHIP 26 SOUTH, RANGE 34 EAST, N.M.P.M. BEARS S00°31'00"E, A DISTANCE OF 104.28 FEET;

SAID STRIP OF LAND BEING 1339.17 FEET OR 81.16 RODS IN LENGTH, CONTAINING 0.922 ACRES MORE OR LESS AND BEING ALLOCATED BY FORTIES AS FOLLOWS:

SW/4 SW/4 1339.17 L.F. 81.16 RODS 0.922 ACRES

SURVEYOR CERTIFICATE

I, FILIMON F. JARAMILLO, A NEW MEXICO PROFESSIONAL SURVEYOR NO. 12797, HEREBY CERTIFY THAT I HAVE CONDUCTED AND AM RESPONSIBLE FOR THIS SURVEY, THAT THIS SURVEY IS TRUE AND CORRECT TO THE BEST OF MY KNOWLEDGE AND BELIEF, AND THAT THIS SURVEY AND PLAT MEET THE MINIMUM STANDARDS FOR LAND SURVEYING IN THE STATE OF NEW MEXICO.

IN WITNESS WHEREOF, THIS CERTIFICATE IS EXECUTED AT CARLSBAD, NEW MEXICO, THIS 11TH DAY OF AUGUST 2014

GENERAL NOTES

1.) THE INTENT OF THIS ROUTE SURVEY IS TO ACQUIRE AN EASEMENT.

2.) BASIS OF BEARING IS NMSP EAST MODIFIED TO SURFACE COORDINATES.

MADRON SURVEYING, INC.
301 SOUTH CANAL
CARLSBAD, NEW MEXICO 88220
Phone (575) 234-3341

SHEET: 6-16

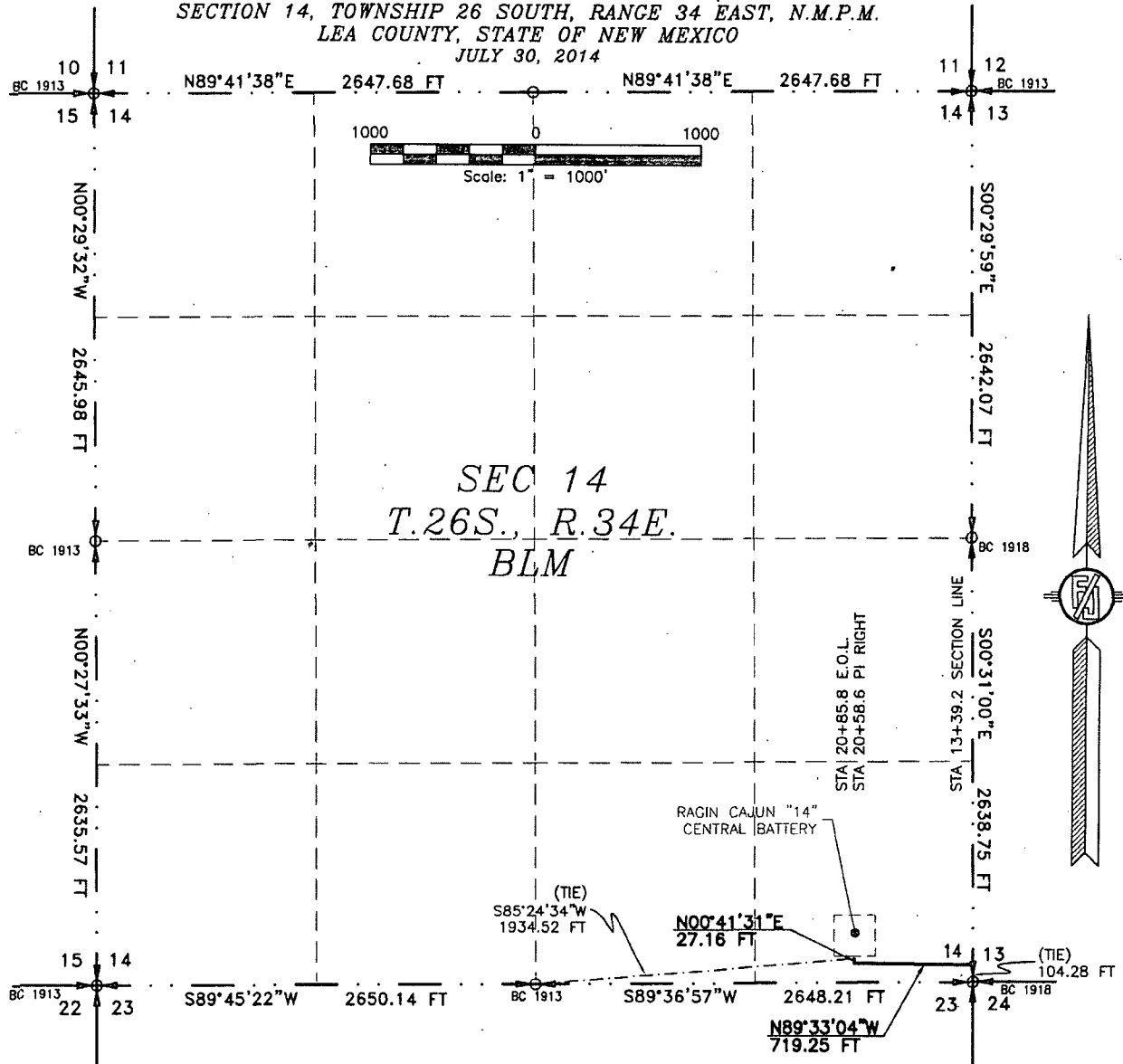
MADRON SURVEYING, INC. 301 SOUTH CANAL (575) 234-3341 CARLSBAD, NEW MEXICO

SURVEY NO. 2680C

FLOWLINE PLAT

RE-ROUTE 2-4" BURIED IN SAME DITCH POLY FIBER FLEX FLOW LINES FROM THE RAGIN CAJUN "12" FED #2H, RAGIN CAJUN "12" FED #3H & RE-ROUTE 2-4" BURIED IN SAME DITCH POLY FIBER FLEX FLOW LINES FROM THE RATTLESNAKE "13" FED #2H, RAGIN CAJUN "12" FED #1H TO MAKE 4-4" BURIED IN SAME DITCH POLY FIBER FLEX FLOW LINES & 4" BURIED FIBER FLEX POLY FLOW LINE FROM THE RAGIN CAJUN "13" FED #1H & 4" BURIED FIBER FLEX POLY FLOW LINE FROM THE RAGIN CAJUN "13" FED #2H & 4" BURIED FIBER FLEX POLY FLOW LINE FROM THE RAGIN CAJUN "14" FED #1H TO THE RAGIN CAJUN "14" CENTRAL BATTERY

DEVON ENERGY PRODUCTION COMPANY, L.P.
CENTERLINE SURVEY OF A PIPELINE CROSSING
SECTION 14, TOWNSHIP 26 SOUTH, RANGE 34 EAST, N.M.P.M.
LEA COUNTY, STATE OF NEW MEXICO
JULY 30, 2014



SEE NEXT SHEET (8-16) FOR DESCRIPTION

SURVEYOR CERTIFICATE

I, FILMON F. JARAMILLO, A NEW MEXICO PROFESSIONAL SURVEYOR NO. 12797, HEREBY CERTIFY THAT I HAVE CONDUCTED AND AM RESPONSIBLE FOR THIS SURVEY, THAT THIS SURVEY IS TRUE AND CORRECT TO THE BEST OF MY KNOWLEDGE AND BELIEF, AND THAT THIS SURVEY AND PLAT MEET THE MINIMUM STANDARDS FOR LAND SURVEYING IN THE STATE OF NEW MEXICO.

IN WITNESS WHEREOF, THIS CERTIFICATE IS EXECUTED AT CARLSBAD,

NEW MEXICO, THIS 17TH DAY OF AUGUST 2014

MADRON SURVEYING, INC.
301 SOUTH CANAL
CARLSBAD, NEW MEXICO 88220
Phone (575) 234-3341

GENERAL NOTES

1.) THE INTENT OF THIS ROUTE SURVEY IS TO ACQUIRE AN EASEMENT.

2.) BASIS OF BEARING IS NMSP EAST MODIFIED TO SURFACE COORDINATES.

SHEET: 7-16

MADRON SURVEYING, INC. CARLSBAD, NEW MEXICO

SURVEY NO. 2680C

FLOWLINE PLAT

RE-ROUTE 2-4" BURIED IN SAME DITCH POLY FIBER FLEX FLOW LINES FROM THE RAGIN CAJUN "12" FED #2H, RAGIN CAJUN "12" FED #3H & RE-ROUTE 2-4" BURIED IN SAME DITCH POLY FIBER FLEX FLOW LINES FROM THE RATTLESNAKE "13" FED #2H, RAGIN CAJUN "12" FED #1H TO MAKE 4-4" BURIED IN SAME DITCH POLY FIBER FLEX FLOW LINES & 4" BURIED FIBER FLEX POLY FLOW LINE FROM THE RAGIN CAJUN "13" FED #1H & 4" BURIED FIBER FLEX POLY FLOW LINE FROM THE RAGIN CAJUN "13" FED #2H & 4" BURIED FIBER FLEX POLY FLOW LINE FROM THE RAGIN CAJUN "14" FED #1H TO THE RAGIN CAJUN "14" CENTRAL BATTERY

DEVON ENERGY PRODUCTION COMPANY, L.P.
CENTERLINE SURVEY OF A PIPELINE CROSSING
SECTION 14, TOWNSHIP 26 SOUTH, RANGE 34 EAST, N.M.P.M.
LEA COUNTY, STATE OF NEW MEXICO
JULY 30, 2014

DESCRIPTION

A STRIP OF LAND 30 FEET WIDE CROSSING BUREAU OF LAND MANAGEMENT LAND IN SECTION 14, TOWNSHIP 26 SOUTH, RANGE 34 EAST, N.M.P.M., LEA COUNTY, STATE OF NEW MEXICO AND BEING 15 FEET EACH SIDE OF THE FOLLOWING DESCRIBED CENTERLINE SURVEY:

BEGINNING AT A POINT WITHIN THE SE/4 SE/4 OF SAID SECTION 14, TOWNSHIP 26 SOUTH, RANGE 34 EAST, N.M.P.M., WHENCE THE SOUTHEAST CORNER OF SAID SECTION 14, TOWNSHIP 26 SOUTH, RANGE 34 EAST, N.M.P.M. BEARS S00°31'00"E, A DISTANCE OF 104.28 FEET;
THENCE N89°33'04"W A DISTANCE OF 719.25 FEET TO AN ANGLE POINT OF THE LINE HEREIN DESCRIBED;
THENCE N00°41'31"E A DISTANCE OF 27.16 FEET THE TERMINUS OF THIS CENTERLINE SURVEY, WHENCE THE SOUTH QUARTER CORNER OF SAID SECTION 14, TOWNSHIP 26 SOUTH, RANGE 34 EAST, N.M.P.M. BEARS S85°24'34"W, A DISTANCE OF 1934.52 FEET;

SAID STRIP OF LAND BEING 746.41 FEET OR 45.24 RODS IN LENGTH, CONTAINING 0.514 ACRES MORE OR LESS AND BEING ALLOCATED BY FORTIES AS FOLLOWS:

SE/4 SE/4 746.41 L.F. 45.24 RODS 0.514 ACRES

SURVEYOR CERTIFICATE

I, FILIMON F. JARAMILLO, A NEW MEXICO PROFESSIONAL SURVEYOR NO. 12797, HEREBY CERTIFY THAT I HAVE CONDUCTED AND AM RESPONSIBLE FOR THIS SURVEY, THAT THIS SURVEY IS TRUE AND CORRECT TO THE BEST OF MY KNOWLEDGE AND BELIEF, AND THAT THIS SURVEY AND PLAT MEET THE MINIMUM STANDARDS FOR LAND SURVEYING IN THE STATE OF NEW MEXICO.

IN WITNESS WHEREOF, THIS CERTIFICATE IS EXECUTED AT CARLSBAD, NEW MEXICO, THIS 12TH DAY OF AUGUST 2014

GENERAL NOTES

- 1.) THE INTENT OF THIS ROUTE SURVEY IS TO ACQUIRE AN EASEMENT.
- 2.) BASIS OF BEARING IS NMSP EAST MODIFIED TO SURFACE COORDINATES.

MADRON SURVEYING, INC.
301 SOUTH CANAL
CARLSBAD, NEW MEXICO 88220
Phone (575) 234-3341

SHEET: 8-16

MADRON SURVEYING INC.

301 SOUTH CANAL
(575) 234-3341

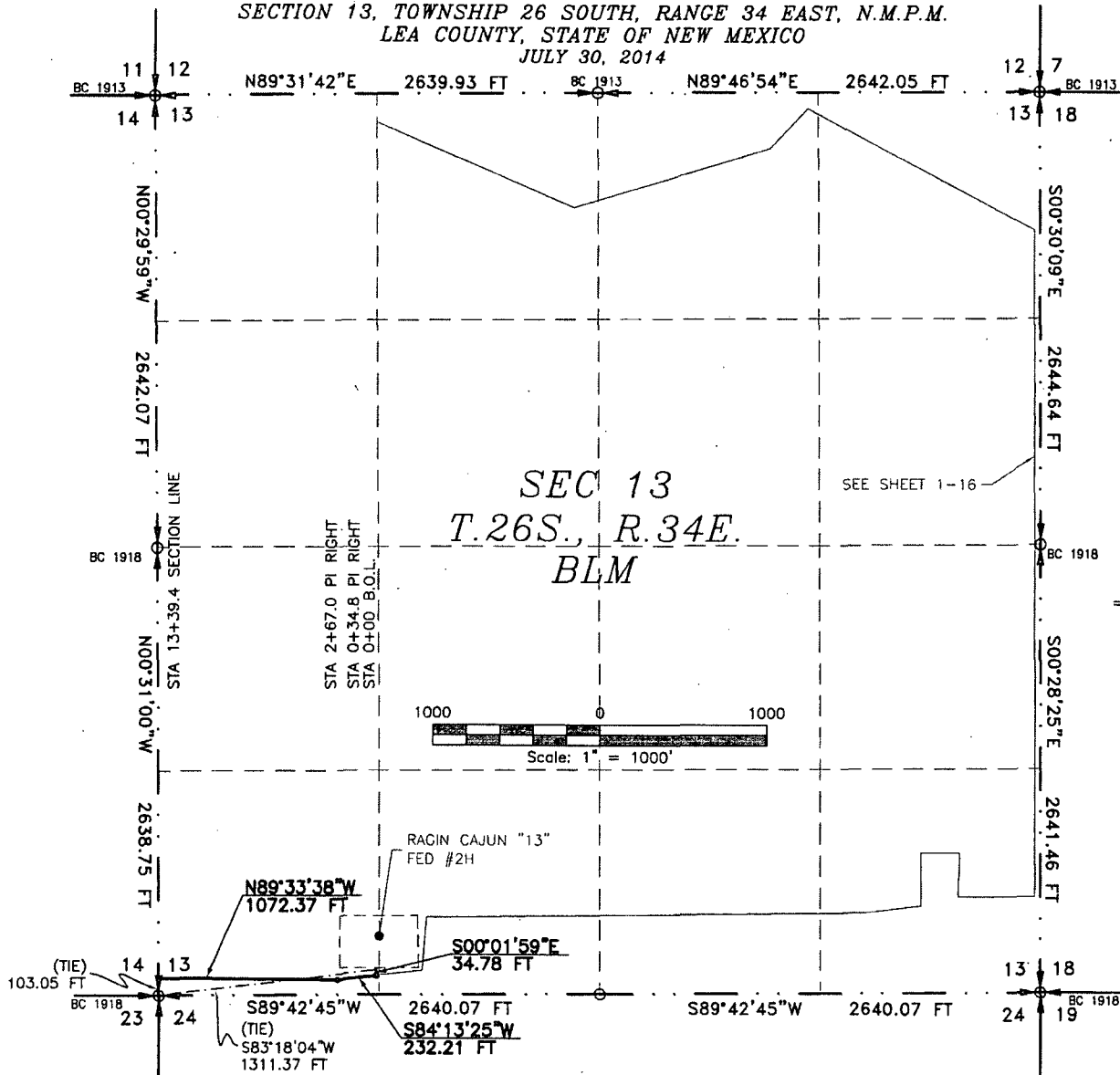
SURVEY NO. 2680C

CARLSBAD, NEW MEXICO

FLOWLINE PLAT

RE-ROUTE 2-4" BURIED IN SAME DITCH POLY FIBER FLEX FLOW LINES FROM THE RAGIN CAJUN "12" FED #2H, RAGIN CAJUN "12" FED #3H & RE-ROUTE 2-4" BURIED IN SAME DITCH POLY FIBER FLEX FLOW LINES FROM THE RATTLESNAKE "13" FED #2H, RAGIN CAJUN "12" FED #1H TO MAKE 4-4" BURIED IN SAME DITCH POLY FIBER FLEX FLOW LINES & 4" BURIED FIBER FLEX POLY FLOW LINE FROM THE RAGIN CAJUN "13" FED #1H & 4" BURIED FIBER FLEX POLY FLOW LINE FROM THE RAGIN CAJUN "13" FED #2H & 4" BURIED FIBER FLEX POLY FLOW LINE FROM THE RAGIN CAJUN "14" FED #1H TO THE RAGIN CAJUN "14" CENTRAL BATTERY

DEVON ENERGY PRODUCTION COMPANY, L.P.
CENTERLINE SURVEY OF A PIPELINE CROSSING
SECTION 13, TOWNSHIP 26 SOUTH, RANGE 34 EAST, N.M.P.M.
LEA COUNTY, STATE OF NEW MEXICO
JULY 30, 2014



SEE NEXT SHEET (10-16) FOR DESCRIPTION

SURVEYOR CERTIFICATE

I, FILMON F. JARAMILLO, A NEW MEXICO PROFESSIONAL SURVEYOR NO. 12797, HEREBY CERTIFY THAT I HAVE CONDUCTED AND AM RESPONSIBLE FOR THIS SURVEY, THAT THIS SURVEY IS TRUE AND CORRECT TO THE BEST OF MY KNOWLEDGE AND BELIEF, AND THAT THIS SURVEY AND PLAT MEET THE MINIMUM STANDARDS FOR LAND SURVEYING IN THE STATE OF NEW MEXICO.

IN WITNESS WHEREOF, THIS CERTIFICATE IS EXECUTED AT CARLSBAD, NEW MEXICO, THIS 17th DAY OF AUGUST 2014

MADRON SURVEYING, INC.
301 SOUTH CANAL
CARLSBAD, NEW MEXICO 88220
Phone (575) 234-3341

FILMON F. JARAMILLO, PLS 12797

GENERAL NOTES

- 1.) THE INTENT OF THIS ROUTE SURVEY IS TO ACQUIRE AN EASEMENT.
- 2.) BASIS OF BEARING IS NMSP EAST MODIFIED TO SURFACE COORDINATES.

SHEET: 9-16

MADRON SURVEYING, INC. 301 SOUTH CANAL (575) 234-3341 CARLSBAD, NEW MEXICO

SURVEY NO. 2680C

FLOWLINE PLAT

RE-ROUTE 2-4" BURIED IN SAME DITCH POLY FIBER FLEX FLOW LINES FROM THE RAGIN CAJUN "12" FED #2H, RAGIN CAJUN "12" FED #3H & RE-ROUTE 2-4" BURIED IN SAME DITCH POLY FIBER FLEX FLOW LINES FROM THE RATTLESNAKE "13" FED #2H, RAGIN CAJUN "12" FED #1H TO MAKE 4-4" BURIED IN SAME DITCH POLY FIBER FLEX FLOW LINES & 4" BURIED FIBER FLEX POLY FLOW LINE FROM THE RAGIN CAJUN "13" FED #1H & 4" BURIED FIBER FLEX POLY FLOW LINE FROM THE RAGIN CAJUN "13" FED #2H & 4" BURIED FIBER FLEX POLY FLOW LINE FROM THE RAGIN CAJUN "14" FED #1H TO THE RAGIN CAJUN "14" CENTRAL BATTERY

DEVON ENERGY PRODUCTION COMPANY, L.P.
CENTERLINE SURVEY OF A PIPELINE CROSSING
SECTION 13, TOWNSHIP 26 SOUTH, RANGE 34 EAST, N.M.P.M.
LEA COUNTY, STATE OF NEW MEXICO
JULY 30, 2014

DESCRIPTION

A STRIP OF LAND 30 FEET WIDE CROSSING BUREAU OF LAND MANAGEMENT LAND IN SECTION 13, TOWNSHIP 26 SOUTH, RANGE 34 EAST, N.M.P.M., LEA COUNTY, STATE OF NEW MEXICO AND BEING 15 FEET EACH SIDE OF THE FOLLOWING DESCRIBED CENTERLINE SURVEY:

BEGINNING AT A POINT WITHIN THE SW/4 SW/4 OF SAID SECTION 13, TOWNSHIP 26 SOUTH, RANGE 34 EAST, N.M.P.M., WHENCE THE SOUTHWEST CORNER OF SAID SECTION 13, TOWNSHIP 26 SOUTH, RANGE 34 EAST, N.M.P.M. BEARS S83°18'04"W, A DISTANCE OF 1311.37 FEET;

THENCE S00°01'59"E A DISTANCE OF 34.78 FEET TO AN ANGLE POINT OF THE LINE HEREIN DESCRIBED;

THENCE S84°13'25"W A DISTANCE OF 232.21 FEET TO AN ANGLE POINT OF THE LINE HEREIN DESCRIBED;

THENCE N89°33'38"W A DISTANCE OF 1072.37 FEET THE TERMINUS OF THIS CENTERLINE SURVEY, WHENCE THE SOUTHWEST CORNER OF SAID SECTION 13, TOWNSHIP 26 SOUTH, RANGE 34 EAST, N.M.P.M. BEARS S00°31'00"E, A DISTANCE OF 103.05 FEET;

SAID STRIP OF LAND BEING 1339.36 FEET OR 81.17 RODS IN LENGTH, CONTAINING 0.922 ACRES MORE OR LESS AND BEING ALLOCATED BY FORTIES AS FOLLOWS:

SW/4 SW/4 1339.36 L.F. 81.17 RODS 0.922 ACRES

SURVEYOR CERTIFICATE

I, FILIMON F. JARAMILLO, A NEW MEXICO PROFESSIONAL SURVEYOR NO. 12797, HEREBY CERTIFY THAT I HAVE CONDUCTED AND AM RESPONSIBLE FOR THIS SURVEY, THAT THIS SURVEY IS TRUE AND CORRECT TO THE BEST OF MY KNOWLEDGE AND BELIEF, AND THAT THIS SURVEY AND PLAT MEET THE MINIMUM STANDARDS FOR LAND SURVEYING IN THE STATE OF NEW MEXICO.

IN WITNESS WHEREOF, THIS CERTIFICATE IS EXECUTED AT CARLSBAD,

NEW MEXICO, THIS 31ST DAY OF AUGUST 2014

GENERAL NOTES

1.) THE INTENT OF THIS ROUTE SURVEY IS TO ACQUIRE AN EASEMENT.

2.) BASIS OF BEARING IS NMSP EAST MODIFIED TO SURFACE COORDINATES.

MADRON SURVEYING, INC.
301 SOUTH CANAL
CARLSBAD, NEW MEXICO 88220
Phone (575) 234-3341

SHEET: 10-16

MADRON SURVEYING, INC.

301 SOUTH CANAL
(575) 234-3341

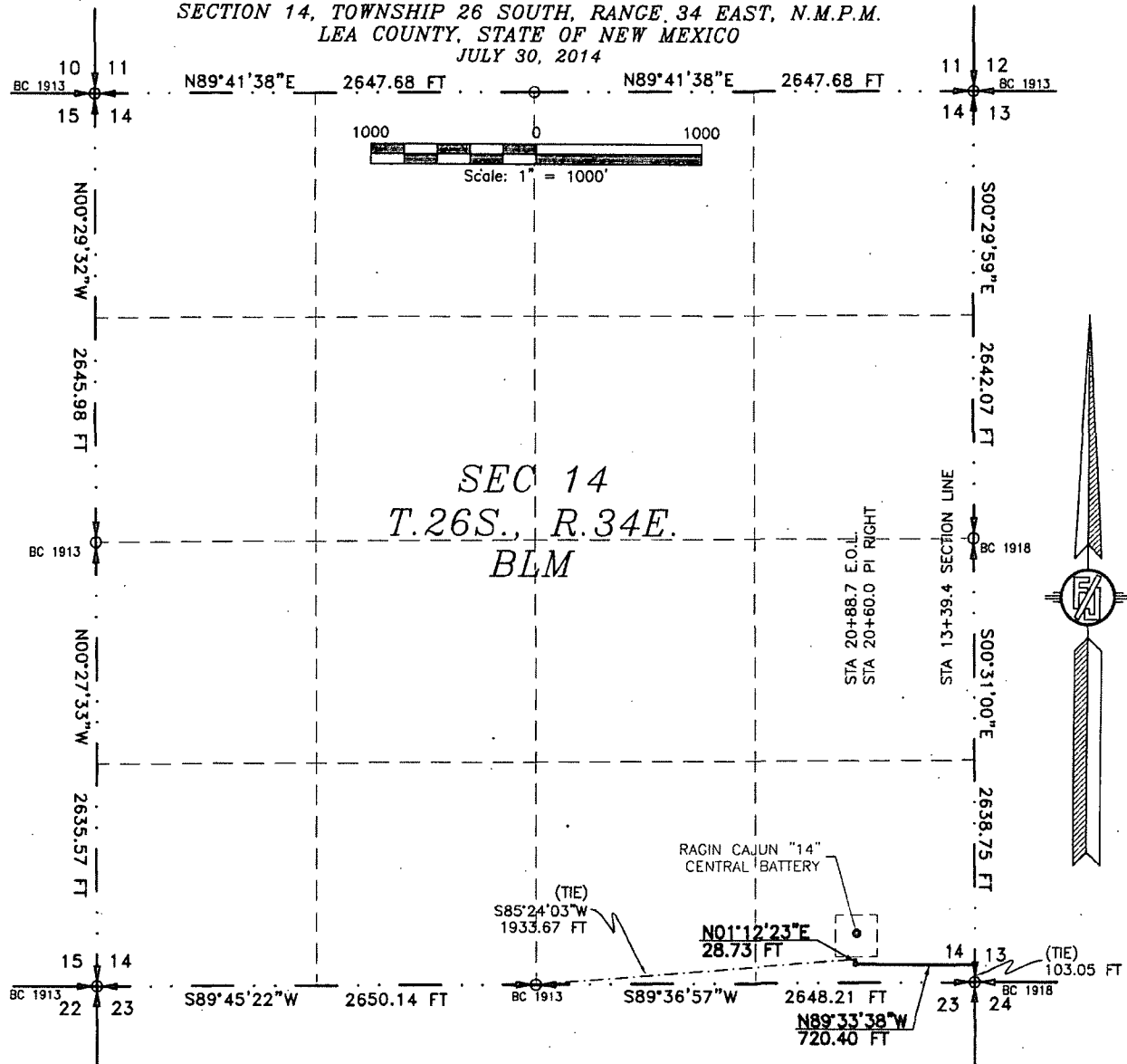
SURVEY NO. 2680C

CARLSBAD, NEW MEXICO

FLOWLINE PLAT

RE-ROUTE 2-4" BURIED IN SAME DITCH POLY FIBER FLEX FLOW LINES FROM THE RAGIN CAJUN "12" FED #2H, RAGIN CAJUN "12" FED #3H & RE-ROUTE 2-4" BURIED IN SAME DITCH POLY FIBER FLEX FLOW LINES FROM THE RATTLESNAKE "13" FED #2H, RAGIN CAJUN "12" FED #1H TO MAKE 4-4" BURIED IN SAME DITCH POLY FIBER FLEX FLOW LINES & 4" BURIED FIBER FLEX POLY FLOW LINE FROM THE RAGIN CAJUN "13" FED #1H & 4" BURIED FIBER FLEX POLY FLOW LINE FROM THE RAGIN CAJUN "13" FED #2H & 4" BURIED FIBER FLEX POLY FLOW LINE FROM THE RAGIN CAJUN "14" FED #1H TO THE RAGIN CAJUN "14" CENTRAL BATTERY

DEVON ENERGY PRODUCTION COMPANY, L.P.
CENTERLINE SURVEY OF A PIPELINE CROSSING
SECTION 14, TOWNSHIP 26 SOUTH, RANGE 34 EAST, N.M.P.M.
LEA COUNTY, STATE OF NEW MEXICO
JULY 30, 2014



SEE NEXT SHEET (12-16) FOR DESCRIPTION

SURVEYOR CERTIFICATE

I, FILMON F. JARAMILLO, A NEW MEXICO PROFESSIONAL SURVEYOR NO. 12797, HEREBY CERTIFY THAT I HAVE CONDUCTED AND AM RESPONSIBLE FOR THIS SURVEY, THAT THIS SURVEY IS TRUE AND CORRECT TO THE BEST OF MY KNOWLEDGE AND BELIEF, AND THAT THIS SURVEY AND PLAT MEET THE MINIMUM STANDARDS FOR LAND SURVEYING IN THE STATE OF NEW MEXICO.

IN WITNESS WHEREOF, THIS CERTIFICATE IS EXECUTED AT CARLSBAD, NEW MEXICO, THIS 11 DAY OF AUGUST 2014

MADRON SURVEYING, INC.
301 SOUTH CANAL
CARLSBAD, NEW MEXICO 88220
Phone (575) 234-3341

GENERAL NOTES

- 1.) THE INTENT OF THIS ROUTE SURVEY IS TO ACQUIRE AN EASEMENT.
- 2.) BASIS OF BEARING IS NMSP EAST MODIFIED TO SURFACE COORDINATES.

SHEET: 11-16

MADRON SURVEYING, INC.

301 SOUTH CANAL
(575) 234-3341

CARLSBAD, NEW MEXICO

SURVEY NO. 2680C

FLOWLINE PLAT

RE-ROUTE 2-4" BURIED IN SAME DITCH POLY FIBER FLEX FLOW LINES FROM THE RAGIN CAJUN "12" FED #2H, RAGIN CAJUN "12" FED #3H & RE-ROUTE 2-4" BURIED IN SAME DITCH POLY FIBER FLEX FLOW LINES FROM THE RATTLESNAKE "13" FED #2H, RAGIN CAJUN "12" FED #1H TO MAKE 4-4" BURIED IN SAME DITCH POLY FIBER FLEX FLOW LINES & 4" BURIED FIBER FLEX POLY FLOW LINE FROM THE RAGIN CAJUN "13" FED #1H & 4" BURIED FIBER FLEX POLY FLOW LINE FROM THE RAGIN CAJUN "13" FED #2H & 4" BURIED FIBER FLEX POLY FLOW LINE FROM THE RAGIN CAJUN "14" FED #1H TO THE RAGIN CAJUN "14" CENTRAL BATTERY

DEVON ENERGY PRODUCTION COMPANY, L.P.
CENTERLINE SURVEY OF A PIPELINE CROSSING
SECTION 14, TOWNSHIP 26 SOUTH, RANGE 34 EAST, N.M.P.M.
LEA COUNTY, STATE OF NEW MEXICO
JULY 30, 2014

DESCRIPTION

A STRIP OF LAND 30 FEET WIDE CROSSING BUREAU OF LAND MANAGEMENT LAND IN SECTION 14, TOWNSHIP 26 SOUTH, RANGE 34 EAST, N.M.P.M., LEA COUNTY, STATE OF NEW MEXICO AND BEING 15 FEET EACH SIDE OF THE FOLLOWING DESCRIBED CENTERLINE SURVEY:

BEGINNING AT A POINT WITHIN THE SE/4 SE/4 OF SAID SECTION 14, TOWNSHIP 26 SOUTH, RANGE 34 EAST, N.M.P.M., WHENCE THE SOUTHEAST CORNER OF SAID SECTION 14, TOWNSHIP 26 SOUTH, RANGE 34 EAST, N.M.P.M. BEARS S00°31'00"E, A DISTANCE OF 103.05 FEET;

THENCE N89°33'38"W A DISTANCE OF 720.40 FEET TO AN ANGLE POINT OF THE LINE HEREIN DESCRIBED;

THENCE N01°12'23"E A DISTANCE OF 28.73 FEET THE TERMINUS OF THIS CENTERLINE SURVEY, WHENCE THE SOUTH QUARTER CORNER OF SAID SECTION 14, TOWNSHIP 26 SOUTH, RANGE 34 EAST, N.M.P.M. BEARS S85°24'03"W, A DISTANCE OF 1933.67 FEET;

SAID STRIP OF LAND BEING 749.13 FEET OR 45.40 RODS IN LENGTH, CONTAINING 0.516 ACRES MORE OR LESS AND BEING ALLOCATED BY FORTIES AS FOLLOWS:

SE/4 SE/4 749.13 L.F. 45.40 RODS 0.516 ACRES

SURVEYOR CERTIFICATE

I, FILMON F. JARAMILLO, A NEW MEXICO PROFESSIONAL SURVEYOR NO. 12797, HEREBY CERTIFY THAT I HAVE CONDUCTED AND AM RESPONSIBLE FOR THIS SURVEY, THAT THIS SURVEY IS TRUE AND CORRECT TO THE BEST OF MY KNOWLEDGE AND BELIEF, AND THAT THIS SURVEY AND PLAT MEET THE MINIMUM STANDARDS FOR LAND SURVEYING IN THE STATE OF NEW MEXICO.

IN WITNESS WHEREOF, THIS CERTIFICATE IS EXECUTED AT CARLSBAD,

NEW MEXICO THIS 23RD DAY OF AUGUST 2014

GENERAL NOTES

1.) THE INTENT OF THIS ROUTE SURVEY IS TO ACQUIRE AN EASEMENT.

2.) BASIS OF BEARING IS NMSP EAST MODIFIED TO SURFACE COORDINATES.

MADRON SURVEYING, INC.
301 SOUTH CANAL
CARLSBAD, NEW MEXICO 88220
Phone (575) 234-3341

SHEET: 12-16

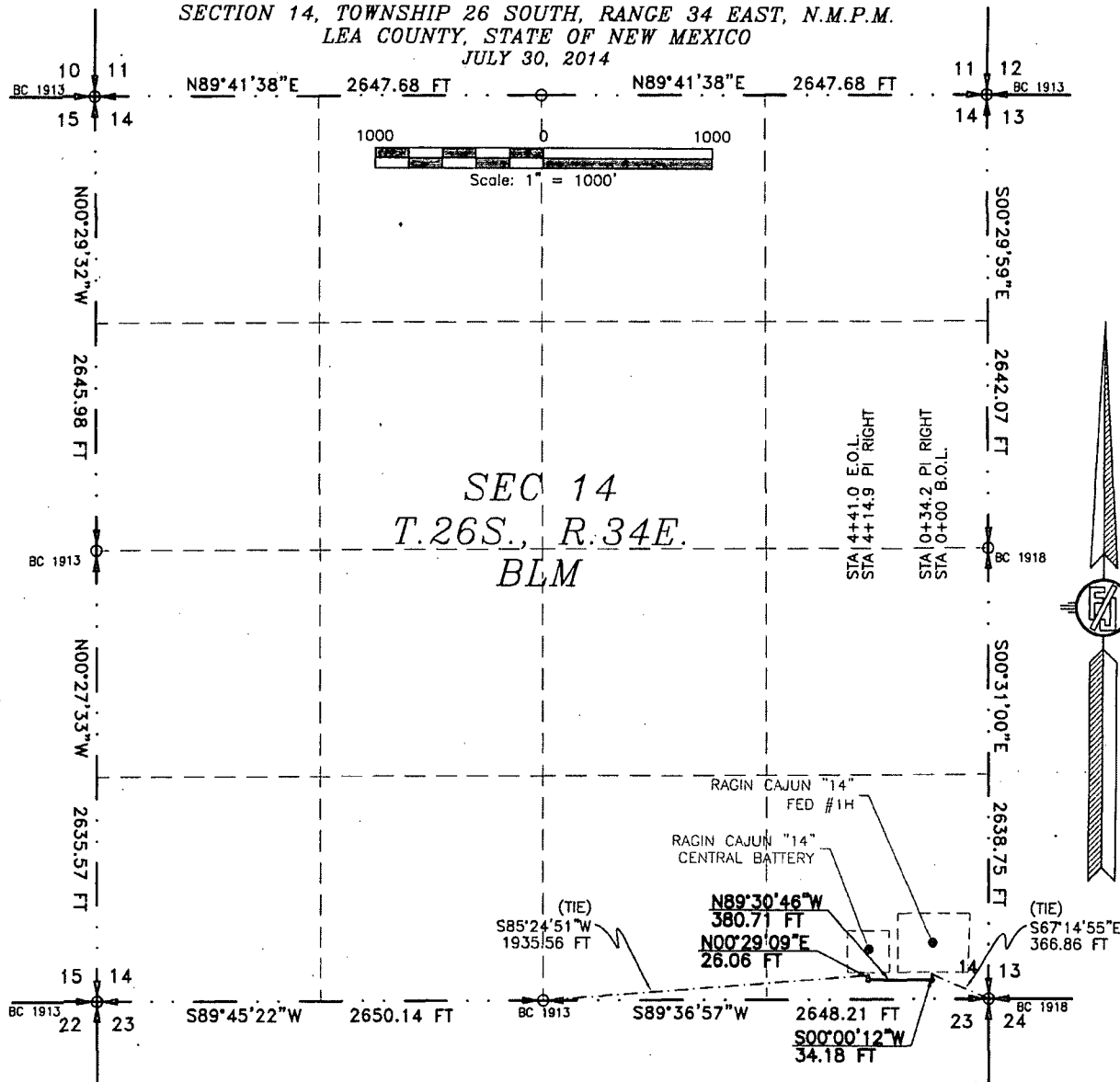
MADRON SURVEYING, INC. 301 SOUTH CANAL CARLSBAD, NEW MEXICO
(575) 234-3341

SURVEY NO. 2680C

FLOWLINE PLAT

RE-ROUTE 2-4" BURIED IN SAME DITCH POLY FIBER FLEX FLOW LINES FROM THE RAGIN CAJUN "12" FED #2H, RAGIN CAJUN "12" FED #3H & RE-ROUTE 2-4" BURIED IN SAME DITCH POLY FIBER FLEX FLOW LINES FROM THE RATTLESNAKE "13" FED #2H, RAGIN CAJUN "12" FED #1H TO MAKE 4-4" BURIED IN SAME DITCH POLY FIBER FLEX FLOW LINES & 4" BURIED FIBER FLEX POLY FLOW LINE FROM THE RAGIN CAJUN "13" FED #1H & 4" BURIED FIBER FLEX POLY FLOW LINE FROM THE RAGIN CAJUN "13" FED #2H & 4" BURIED FIBER FLEX POLY FLOW LINE FROM THE RAGIN CAJUN "14" FED #1H TO THE RAGIN CAJUN "14" CENTRAL BATTERY

DEVON ENERGY PRODUCTION COMPANY, L.P. CENTERLINE SURVEY OF A PIPELINE CROSSING SECTION 14, TOWNSHIP 26 SOUTH, RANGE 34 EAST, N.M.P.M. LEA COUNTY, STATE OF NEW MEXICO JULY 30, 2014



SEE NEXT SHEET (14-16) FOR DESCRIPTION

SURVEYOR CERTIFICATE

I, FILMON F. JARAMILLO, A NEW MEXICO PROFESSIONAL SURVEYOR NO. 12797, HEREBY CERTIFY THAT I HAVE CONDUCTED AND AM RESPONSIBLE FOR THIS SURVEY, THAT THIS SURVEY IS TRUE AND CORRECT TO THE BEST OF MY KNOWLEDGE AND BELIEF, AND THAT THIS SURVEY AND PLAT MEET THE MINIMUM STANDARDS FOR LAND SURVEYING IN THE STATE OF NEW MEXICO.

IN WITNESS WHEREOF, THIS CERTIFICATE IS EXECUTED AT CARLSBAD,

NEW MEXICO, THIS 12 DAY OF AUGUST 2014

GENERAL NOTES

- 1.) THE INTENT OF THIS ROUTE SURVEY IS TO ACQUIRE AN EASEMENT.
- 2.) BASIS OF BEARING IS NMSP EAST MODIFIED TO SURFACE COORDINATES.

[Signature]
FILMON F. JARAMILLO, PLS 12797
REGISTERED SURVEYOR

MADRON SURVEYING, INC.
301 SOUTH CANAL
CARLSBAD, NEW MEXICO 88220
Phone (575) 234-3341

SHEET: 13-16

MADRON SURVEYING, INC.

301 SOUTH CANAL
(575) 234-3341

SURVEY NO. 2680C

CARLSBAD, NEW MEXICO

FLOWLINE PLAT

RE-ROUTE 2-4" BURIED IN SAME DITCH POLY FIBER FLEX FLOW LINES FROM THE RAGIN CAJUN "12" FED #2H, RAGIN CAJUN "12" FED #3H & RE-ROUTE 2-4" BURIED IN SAME DITCH POLY FIBER FLEX FLOW LINES FROM THE RATTLESNAKE "13" FED #2H, RAGIN CAJUN "12" FED #1H TO MAKE 4-4" BURIED IN SAME DITCH POLY FIBER FLEX FLOW LINES & 4" BURIED FIBER FLEX POLY FLOW LINE FROM THE RAGIN CAJUN "13" FED #1H & 4" BURIED FIBER FLEX POLY FLOW LINE FROM THE RAGIN CAJUN "13" FED #2H & 4" BURIED FIBER FLEX POLY FLOW LINE FROM THE RAGIN CAJUN "14" FED #1H TO THE RAGIN CAJUN "14" CENTRAL BATTERY

DEVON ENERGY PRODUCTION COMPANY, L.P.
CENTERLINE SURVEY OF A PIPELINE CROSSING
SECTION 14, TOWNSHIP 26 SOUTH, RANGE 34 EAST, N.M.P.M.
LEA COUNTY, STATE OF NEW MEXICO
JULY 30, 2014

DESCRIPTION

A STRIP OF LAND 30 FEET WIDE CROSSING BUREAU OF LAND MANAGEMENT LAND IN SECTION 14, TOWNSHIP 26 SOUTH, RANGE 34 EAST, N.M.P.M., LEA COUNTY, STATE OF NEW MEXICO AND BEING 15 FEET EACH SIDE OF THE FOLLOWING DESCRIBED CENTERLINE SURVEY:

BEGINNING AT A POINT WITHIN THE SE/4 SE/4 OF SAID SECTION 14, TOWNSHIP 26 SOUTH, RANGE 34 EAST, N.M.P.M., WHENCE THE SOUTHEAST CORNER OF SAID SECTION 14, TOWNSHIP 26 SOUTH, RANGE 34 EAST, N.M.P.M. BEARS S67°14'55"E, A DISTANCE OF 366.86 FEET;
THENCE S00°00'12"W A DISTANCE OF 34.18 FEET TO AN ANGLE POINT OF THE LINE HEREIN DESCRIBED;
THENCE N89°30'46"W A DISTANCE OF 380.71 FEET TO AN ANGLE POINT OF THE LINE HEREIN DESCRIBED;
THENCE N00°29'09"E A DISTANCE OF 26.06 FEET THE TERMINUS OF THIS CENTERLINE SURVEY, WHENCE THE SOUTH QUARTER CORNER OF SAID SECTION 14, TOWNSHIP 26 SOUTH, RANGE 34 EAST, N.M.P.M. BEARS S85°24'51"W, A DISTANCE OF 1935.56 FEET;

SAID STRIP OF LAND BEING 440.95 FEET OR 26.72 RODS IN LENGTH, CONTAINING 0.304 ACRES MORE OR LESS AND BEING ALLOCATED BY FORTIES AS FOLLOWS:

SE/4 SE/4 440.95 L.F. 26.72 RODS 0.304 ACRES

SURVEYOR CERTIFICATE

I, FILMON F. JARAMILLO, A NEW MEXICO PROFESSIONAL SURVEYOR NO. 12797, HEREBY CERTIFY THAT I HAVE CONDUCTED AND AM RESPONSIBLE FOR THIS SURVEY, THAT THIS SURVEY IS TRUE AND CORRECT TO THE BEST OF MY KNOWLEDGE AND BELIEF, AND THAT THIS SURVEY AND PLAT MEET THE MINIMUM STANDARDS FOR LAND SURVEYING IN THE STATE OF NEW MEXICO.

IN WITNESS WHEREOF, THIS CERTIFICATE IS EXECUTED AT CARLSBAD,

NEW MEXICO, THIS 12 DAY OF AUGUST 2014

GENERAL NOTES

1.) THE INTENT OF THIS ROUTE SURVEY IS TO ACQUIRE AN EASEMENT.

2.) BASIS OF BEARING IS NMSP EAST MODIFIED TO SURFACE COORDINATES.

MADRON SURVEYING, INC.
301 SOUTH CANAL
CARLSBAD, NEW MEXICO 88220
Phone (575) 234-3341

SHEET: 14-16

MADRON SURVEYING, INC. 301 SOUTH CANAL (575) 234-3341 CARLSBAD, NEW MEXICO

SURVEY NO. 2680C

