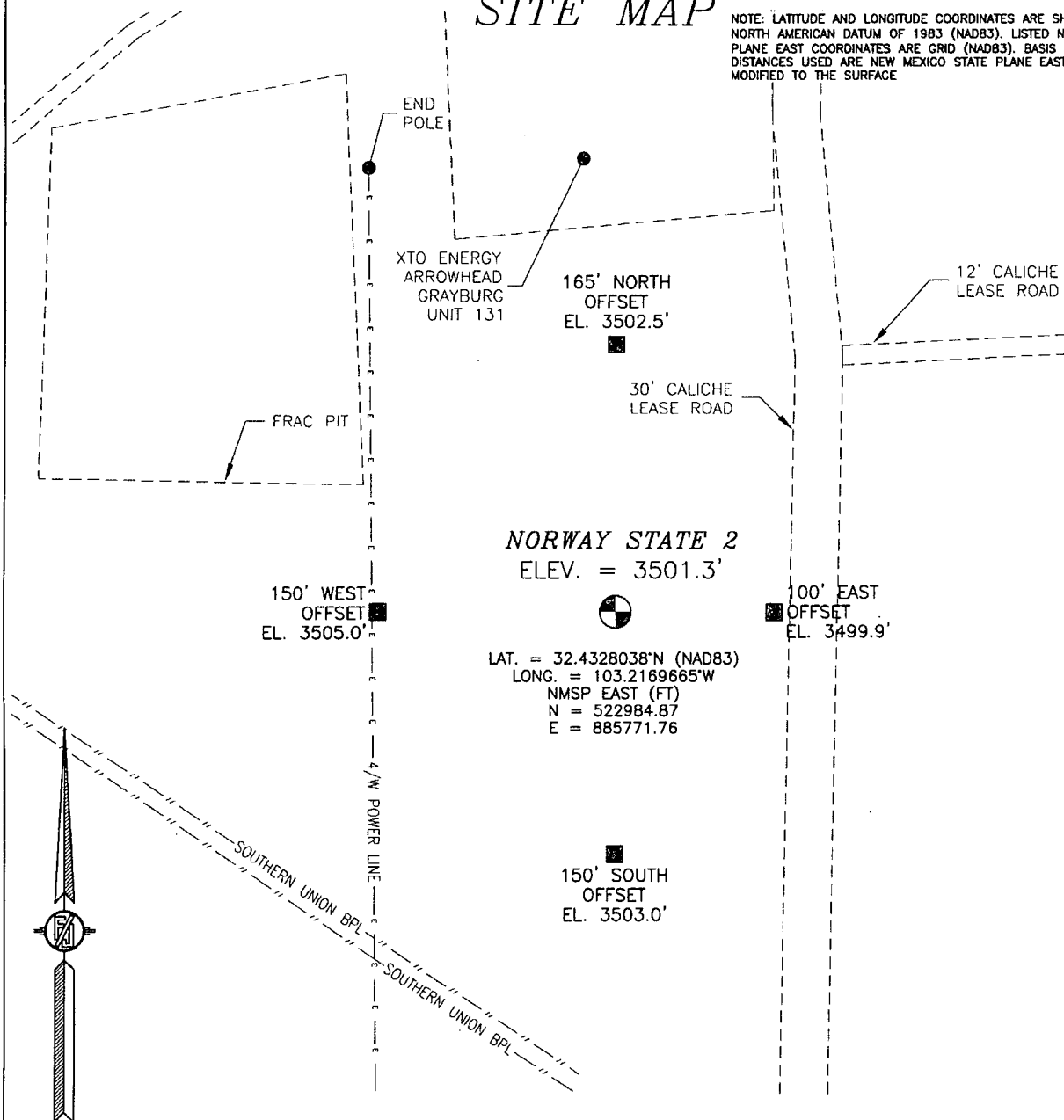


DEC 18 2014

SECTION 36, TOWNSHIP 21 SOUTH, RANGE 36 EAST, N.M.P.M.
LEA COUNTY, STATE OF NEW MEXICO

SITE MAP

NOTE: LATITUDE AND LONGITUDE COORDINATES ARE SHOWN USING THE NORTH AMERICAN DATUM OF 1983 (NAD83). LISTED NEW MEXICO STATE PLANE EAST COORDINATES ARE GRID (NAD83). BASIS OF BEARING AND DISTANCES USED ARE NEW MEXICO STATE PLANE EAST COORDINATES MODIFIED TO THE SURFACE



0 10 50 100 200

SCALE 1" = 100'

DIRECTIONS TO LOCATION

FROM THE INTERSECTION OF STATE HIGHWAY 176 AND CR 22 (COYOTE HILL) GO WEST ON CR 22 FOR APPROX. 1.2 MILES. GO SOUTH APPROX. 0.6 OF A MILE. WELL HEAD LOCATION IS APPROX. 100' WEST.

MACK ENERGY CORPORATION
NORWAY STATE 2
LOCATED 1700 FT. FROM THE SOUTH LINE
AND 2043 FT. FROM THE EAST LINE OF
SECTION 36, TOWNSHIP 21 SOUTH,
RANGE 36 EAST, N.M.P.M.
LEA COUNTY, STATE OF NEW MEXICO

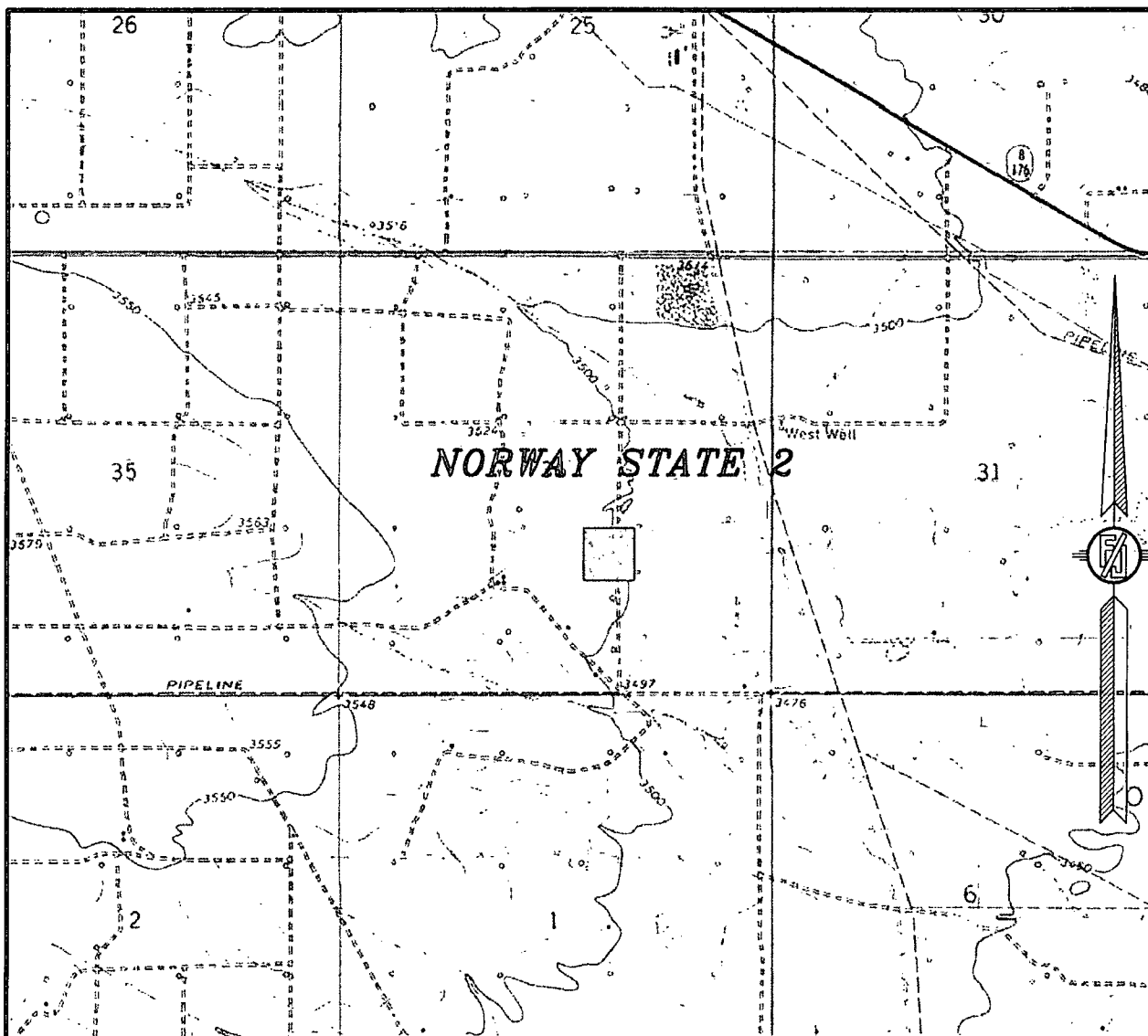
DECEMBER 10, 2014

SURVEY NO. 3484B

MADRON SURVEYING, INC. 301 SOUTH CANAL (575) 234-3341

CARLSBAD, NEW MEXICO

SECTION 36, TOWNSHIP 21 SOUTH, RANGE 36 EAST, N.M.P.M.
LEA COUNTY, STATE OF NEW MEXICO
LOCATION VERIFICATION MAP



USGS QUAD MAP:
EUNICE

NOT TO SCALE

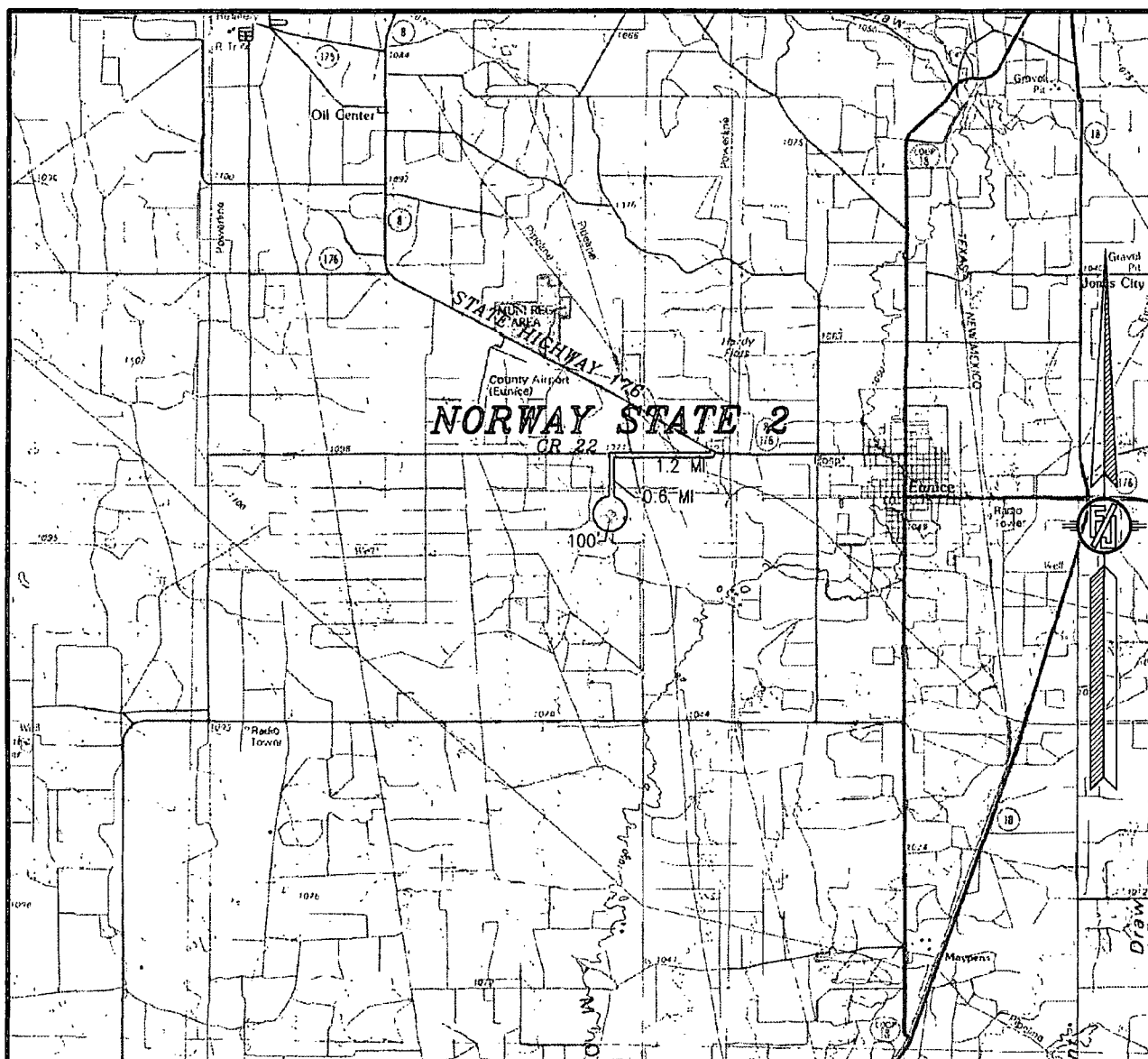
MACK ENERGY CORPORATION
NORWAY STATE 2
LOCATED 1700 FT. FROM THE SOUTH LINE
AND 2043 FT. FROM THE EAST LINE OF
SECTION 36, TOWNSHIP 21 SOUTH,
RANGE 36 EAST, N.M.P.M.
LEA COUNTY, STATE OF NEW MEXICO

DECEMBER 10, 2014

MADRON SURVEYING, INC. 301 SOUTH CANAL (575) 234-3341 CARLSBAD, NEW MEXICO

SURVEY NO. 3484B

SECTION 36, TOWNSHIP 21 SOUTH, RANGE 36 EAST, N.M.P.M.
LEA COUNTY, STATE OF NEW MEXICO
VICINITY MAP



DISTANCES IN MILES

NOT TO SCALE

DIRECTIONS TO LOCATION

FROM THE INTERSECTION OF STATE HIGHWAY 176 AND CR 22
(COYOTE HILL) GO WEST ON CR 22 FOR APPROX. 1.2 MILES. GO
SOUTH APPROX. 0.6 OF A MILE. WELL HEAD LOCATION IS APPROX.
100' WEST.

**MACK ENERGY CORPORATION
NORWAY STATE 2**

LOCATED 1700 FT. FROM THE SOUTH LINE
AND 2043 FT. FROM THE EAST LINE OF
SECTION 36, TOWNSHIP 21 SOUTH,
RANGE 36 EAST, N.M.P.M.
LEA COUNTY, STATE OF NEW MEXICO

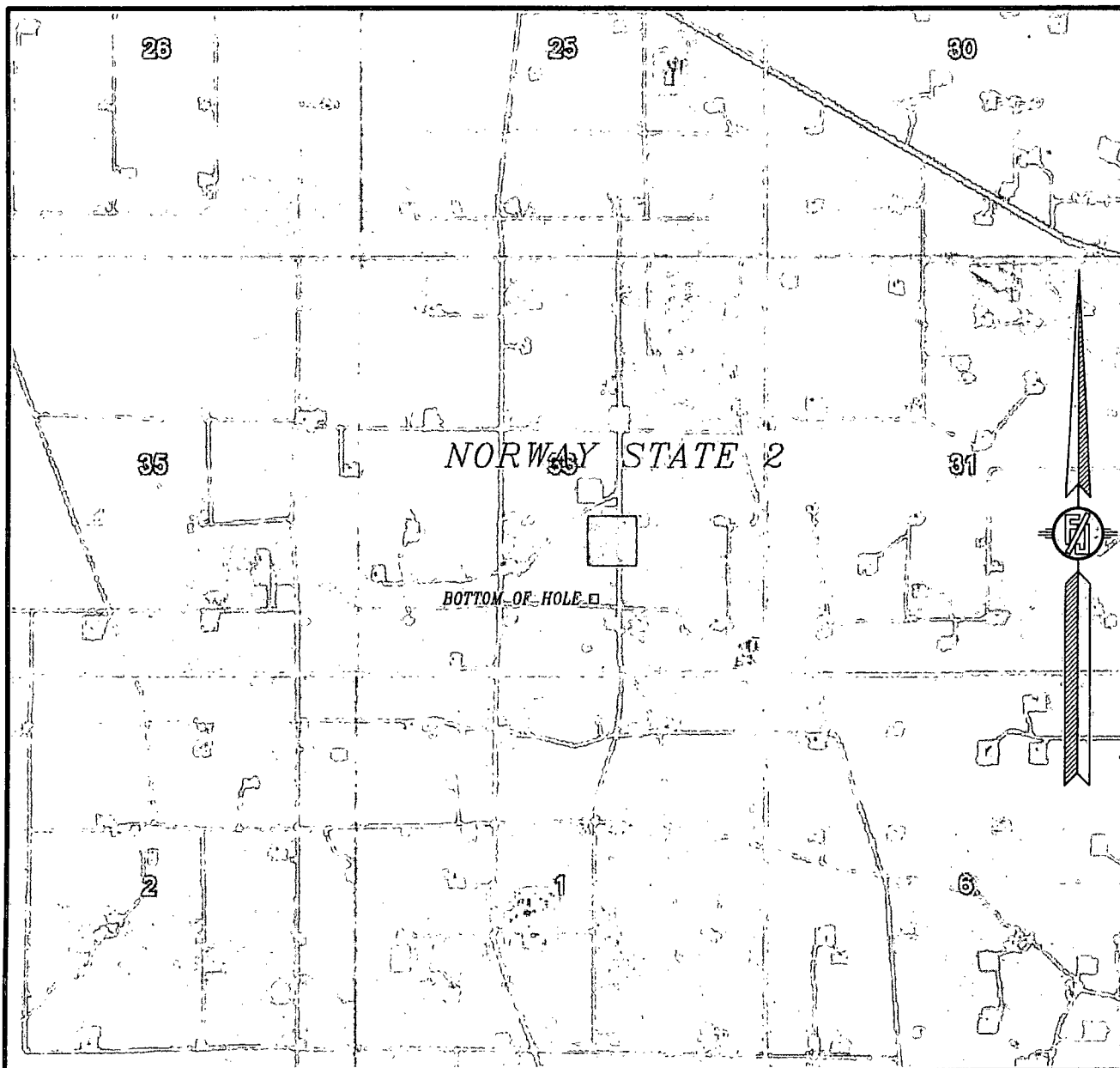
DECEMBER 10, 2014

SURVEY NO. 3484B

MADRON SURVEYING, INC. 301 SOUTH CANAL
(575) 234-3341

CARLSBAD, NEW MEXICO

SECTION 36, TOWNSHIP 21 SOUTH, RANGE 36 EAST, N.M.P.M.
LEA COUNTY, STATE OF NEW MEXICO
AERIAL PHOTO



NOT TO SCALE
AERIAL PHOTO:
GOOGLE EARTH
FEBRUARY 2014

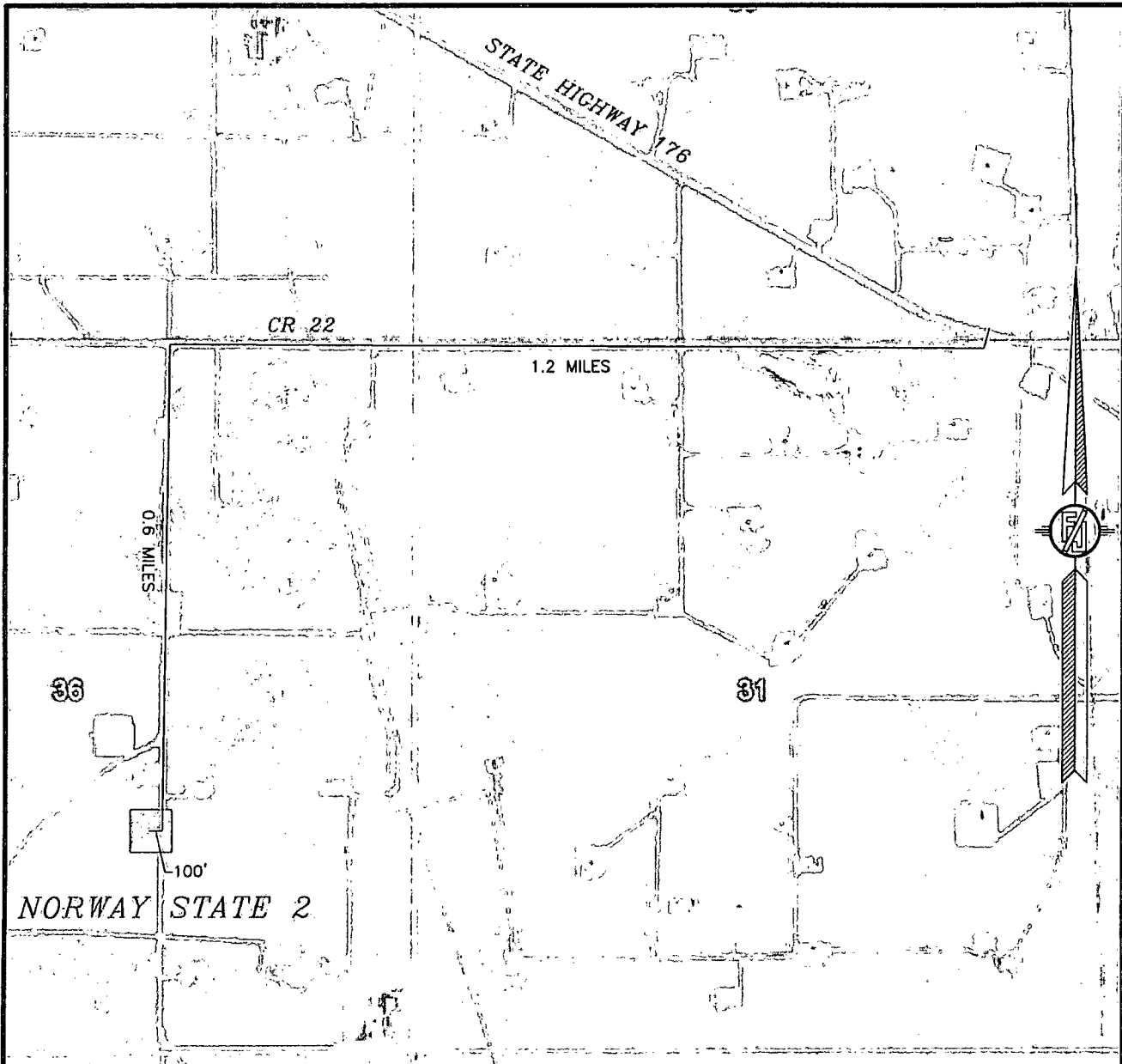
MACK ENERGY CORPORATION
NORWAY STATE 2
LOCATED 1700 FT. FROM THE SOUTH LINE
AND 2043 FT. FROM THE EAST LINE OF
SECTION 36, TOWNSHIP 21 SOUTH,
RANGE 36 EAST, N.M.P.M.
LEA COUNTY, STATE OF NEW MEXICO

DECEMBER 10, 2014

SURVEY NO. 3484B

MADRON SURVEYING, INC. 301 SOUTH CANAL (575) 234-3341 CARLSBAD, NEW MEXICO

SECTION 36, TOWNSHIP 21 SOUTH, RANGE 36 EAST, N.M.P.M.
LEA COUNTY, STATE OF NEW MEXICO
ACCESS AERIAL ROUTE MAP



NOT TO SCALE
AERIAL PHOTO:
GOOGLE EARTH
FEBRUARY 2014

MACK ENERGY CORPORATION
NORWAY STATE 2
LOCATED 1700 FT. FROM THE SOUTH LINE
AND 2043 FT. FROM THE EAST LINE OF
SECTION 36, TOWNSHIP 21 SOUTH,
RANGE 36 EAST, N.M.P.M.
LEA COUNTY, STATE OF NEW MEXICO

DECEMBER 10, 2014

SURVEY NO. 3484B

MADRON SURVEYING, INC. 301 SOUTH CANAL (575) 234-3341 CARLSBAD, NEW MEXICO