

DISTRICT I
1625 N. French Dr., Hobbs, NM 88240
Phone: (575) 393-6161 Fax: (575) 393-0720

DISTRICT II
811 S. First St., Artesia, NM 88210
Phone: (575) 748-1283 Fax: (575) 748-9720

DISTRICT III
1000 Rio Brazos Road, Aztec, NM 87410
Phone: (505) 334-6178 Fax: (505) 334-6170

DISTRICT IV
1220 S. St. Francis Dr., Santa Fe, NM 87505
Phone: (505) 476-3460 Fax: (505) 476-3462

State of New Mexico
Energy, Minerals & Natural Resources Department
OIL CONSERVATION DIVISION
1220 South St. Francis Dr.
Santa Fe, NM 87505

Form C-102
Revised August 1, 2011
Submit one copy to appropriate
District Office

☐ AMENDED REPORT

WELL LOCATION AND ACREAGE DEDICATION PLAT

¹ API Number 30-025-42363	² Pool Code 19190	DRINKARD	HOESOOD
⁴ Property Code 314022	⁵ Property Name M State	JAN 13 2015	⁶ Well Number 15
⁷ GRID No. 370080	⁸ Operator Name Breitburn Operating LP		⁹ Elevation 3375'

¹⁰Surface Location

UL or lot no. J	Section 20	Township 22 S	Range 37 E	Lot Idn	Feet from the 2004'	North/South line South	Feet from the 1975'	East/West line East	County Lea
--------------------	---------------	------------------	---------------	---------	------------------------	---------------------------	------------------------	------------------------	---------------

¹¹Bottom Hole Location If Different From Surface

UL or lot no.	Section	Township	Range	Lot Idn	Feet from the	North/South line	Feet from the	East/West line	County
---------------	---------	----------	-------	---------	---------------	------------------	---------------	----------------	--------

¹² Dedicated Acres	¹³ Joint or Infill	¹⁴ Consolidation Code	¹⁵ Order No.
-------------------------------	-------------------------------	----------------------------------	-------------------------

No allowable will be assigned to this completion until all interests have been consolidated or a non-standard unit has been approved by the division.

	<p>¹⁷OPERATOR CERTIFICATION</p> <p>I hereby certify that the information contained herein is true and complete to the best of my knowledge and belief, and that this organization either owns a working interest or unleased mineral interest in the land including the proposed bottom hole location or has a right to drill this well at this location pursuant to a contract with an owner of such a mineral or working interest, or to a voluntary pooling agreement or a compulsory pooling order heretofore entered by the division.</p> <p>Signature _____ Date _____</p> <p>Printed Name _____</p> <p>E-mail Address _____</p>
	<p>¹⁸SURVEYOR CERTIFICATION</p> <p>I hereby certify that the well location shown on this plat was plotted from field notes of actual surveys made by me or under my supervision, and that the same is true and correct to the best of my belief.</p> <p>12-17-2014</p> <p>Date of Survey _____</p> <p>Signature and Seal of Professional Surveyor _____</p> <p>10324</p> <p>Certificate Number _____</p>

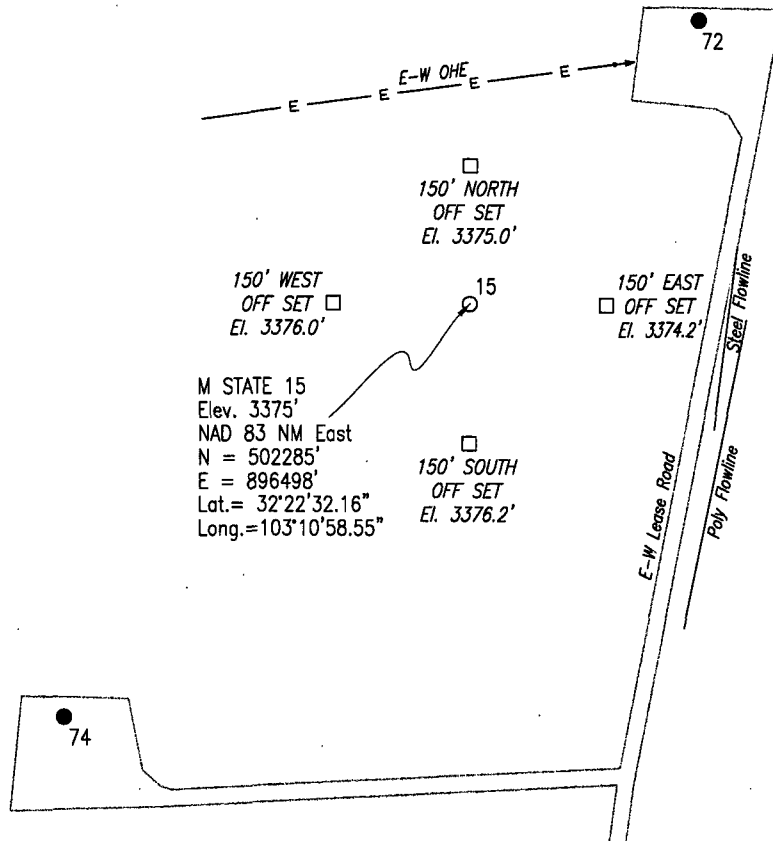
4.5 Miles SW of Eunice, New Mexico.

File No. A-9992

JAN 13 2015

T-22-S, R-37-E
N.M.P.M.

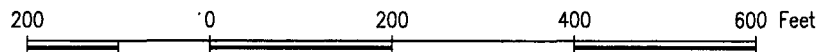
SECTION 20



M STATE 15
Elev. 3375'
NAD 83 NM East
N = 502285'
E = 896498'
Lat. = 32°22'32.16"
Long. = 103°10'58.55"

Directions to Location: From the intersection of NM-176 and NM-18, depart NM-176 toward Eunice (2.1 miles). Turn left onto NM-207/Main Street (2.5 miles). Turn right onto Delaware Basin/CR-21 (2.4 miles). Turn left onto lease road south (1.7 miles). Turn left at 4-way intersection onto lease road east (0.7 miles). Turn right onto lease road south (0.24 miles). Turn left onto lease road east (0.24 miles). Turn left onto lease road north (0.26 miles). Arrive at location 260± feet west.

Site Map



Breitbart Operating LP
M State No. 15 - 2004' FSL & 1975' FEL
Section 20, T-22-S, R-37-E, N.M.P.M.,
Lea County, New Mexico

STANFORD SURVEYING COMPANY
P.O. BOX 8490
MIDLAND, TEXAS 79708-8490
TBPLS Firm No. 10128400 432-699-5708

DRAWN BY Angela Prieto

DATE 12-19-2014

SCALE 1" = 200'

FILE NAME A-9992a