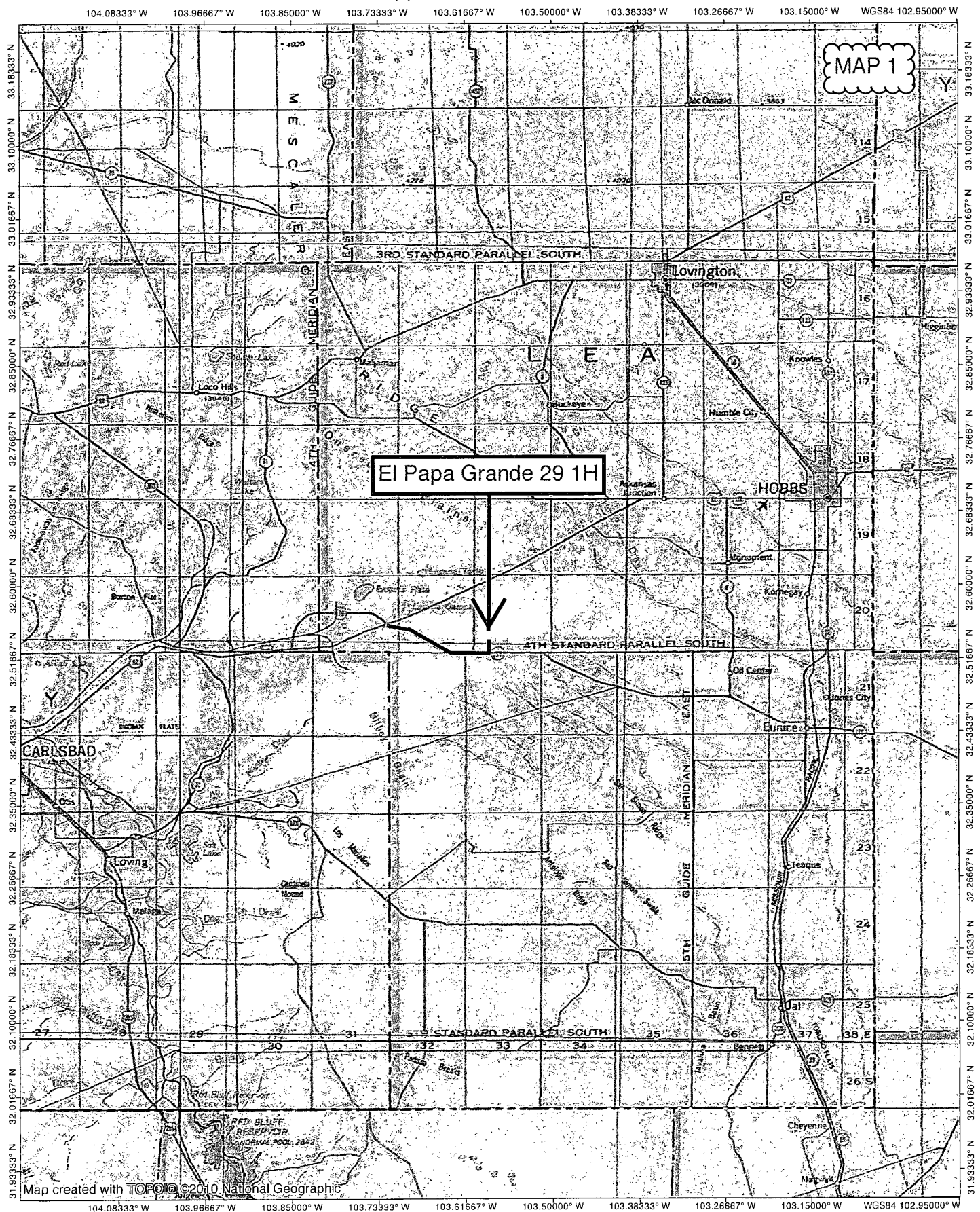
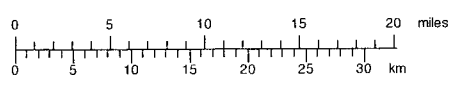


FEB 03 2015

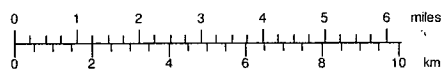
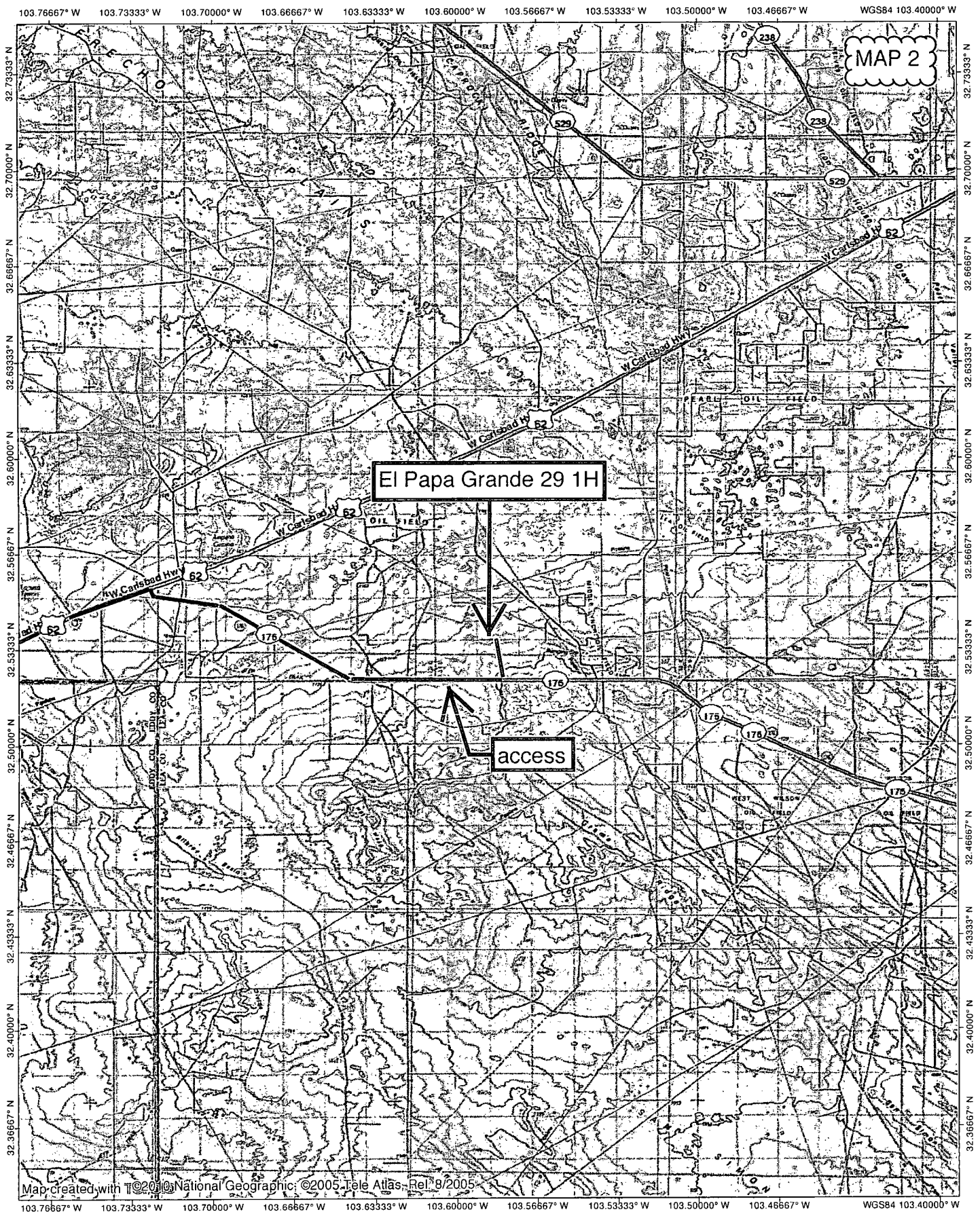


MAP 1

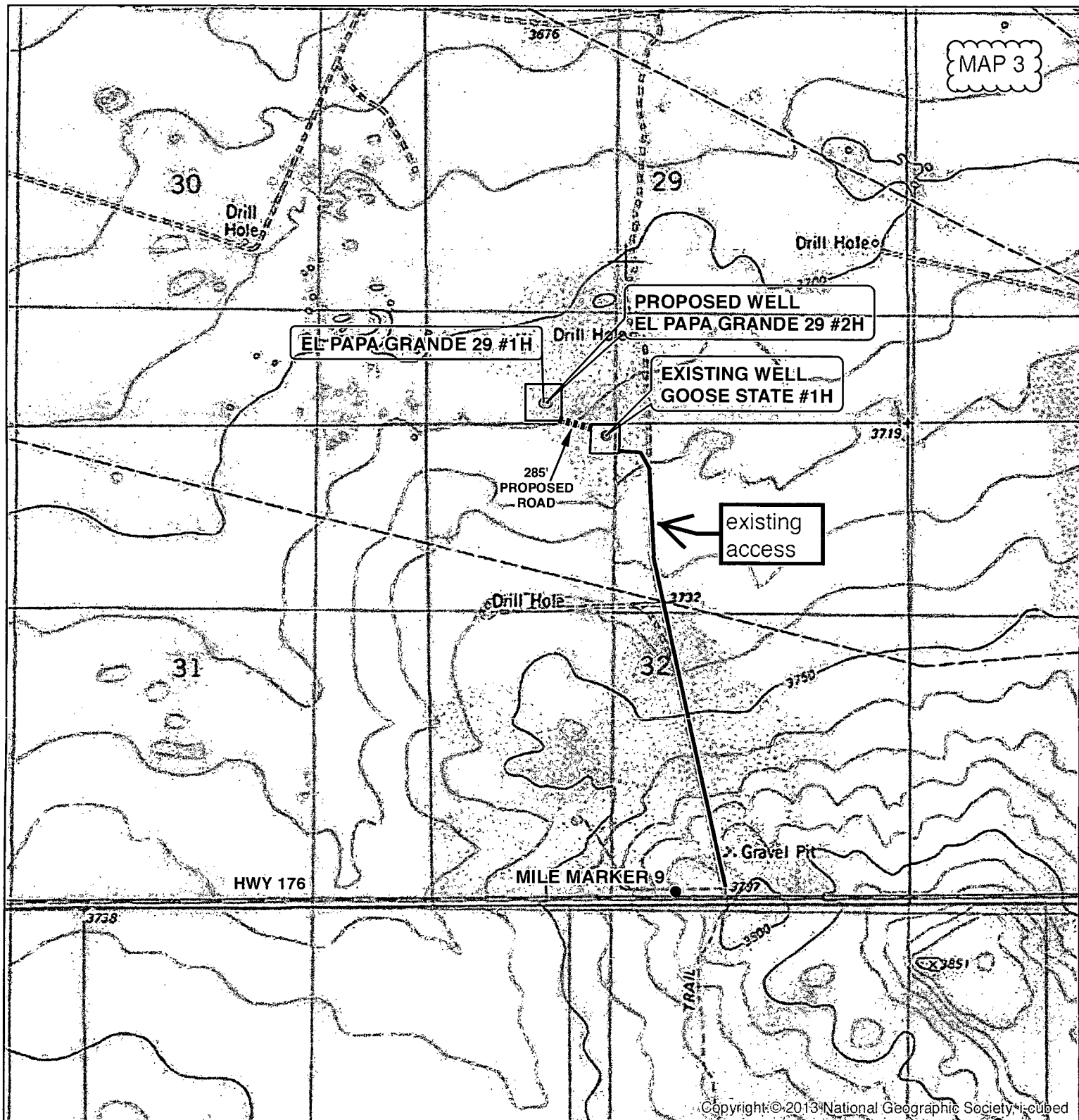
El Papa Grande 29 1H



TN MN
7.5°
01/09/14



LOCATION VERIFICATION MAP

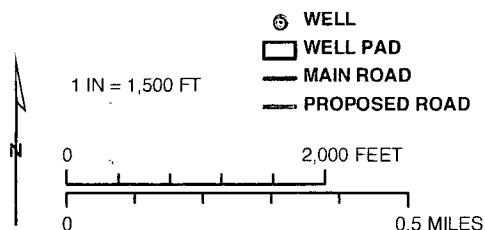


Copyright © 2013 National Geographic Society, Inc.

SEC. 29, TWP. 20 S, RGE. 34E
 SURVEY: N.M.P.M
 COUNTY: LEA STATE: NEW MEXICO
 DESCRIPTION: EL PAPA GRANDE 29 #1H
 200' FSL, 1300' FWL

ELEVATION: 3709.7'
 OPERATOR: DIAMONDBACK RESOURCES
 LEASE: EL PAPA GRANDE 29

W.O. # 13-516

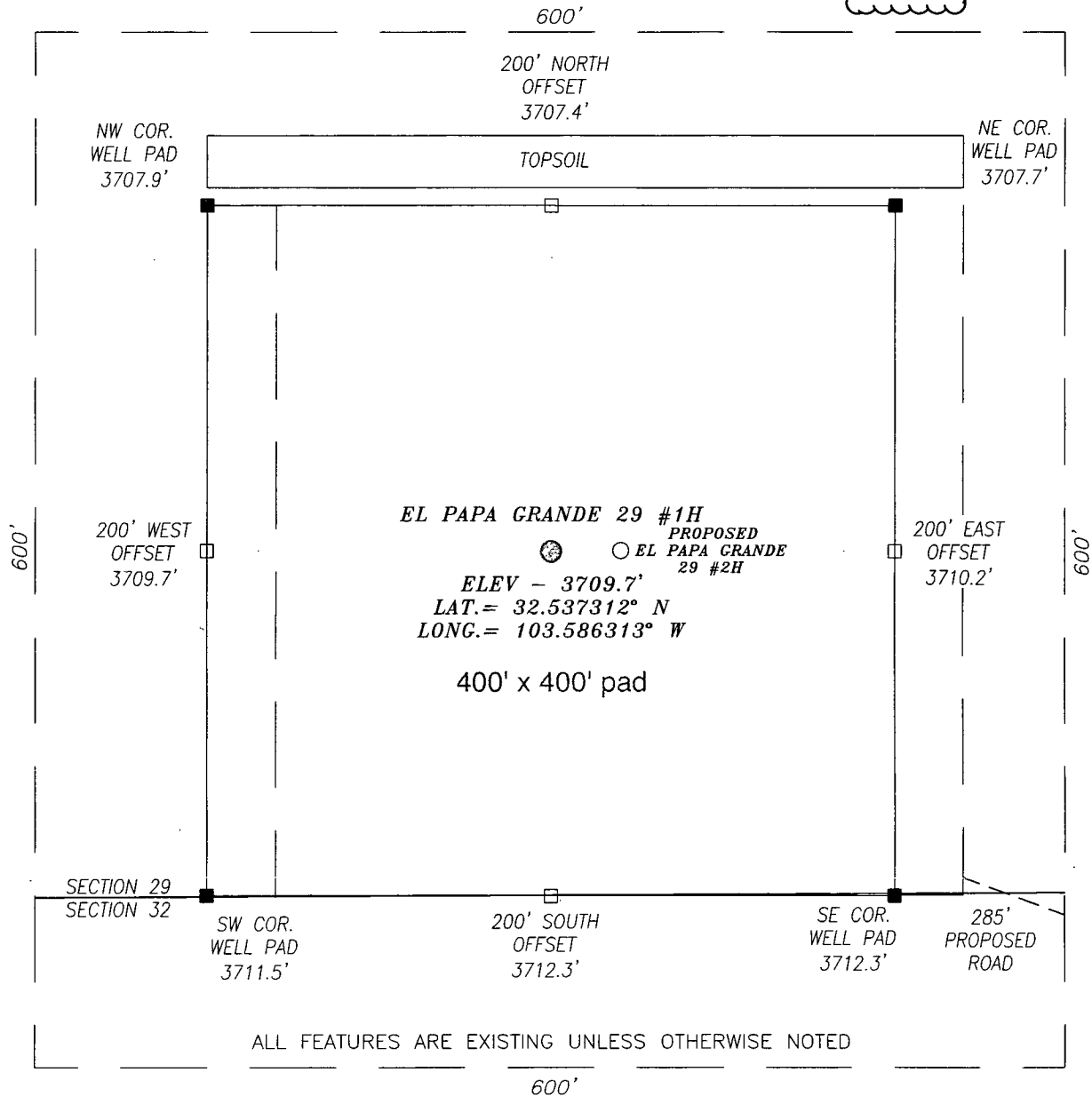


HARCROW SURVEYING, LLC
 1107 WATSON, ARTESIA N.M. 88210
 PH: (575) 513-2570 FAX: (575) 746-2158
 chad_harcrow77@yahoo.com



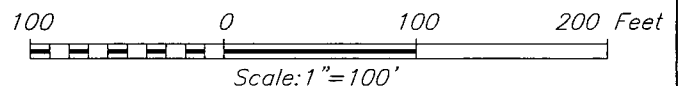
MAP DATE: 8/13/2013

MAP 4 NEW MEXICO



DIRECTIONS TO LOCATION:

HEADING EAST ON HWY 176 TURN LEFT (NORTH) APPROX. 0.1 MILE PAST MILE MARKER 9 ONTO A CALICHE ROAD AND GO APPROX. 1.0 MILE; THEN TURN LEFT (WEST) AND GO APPROX. 300 FEET TO EXISTING GOOSE ST. #1H WELL PAD; GO TO NORTHWEST PAD CORNER THEN PROPOSED WELL IS APPROX. 580 FEET NORTHWEST.



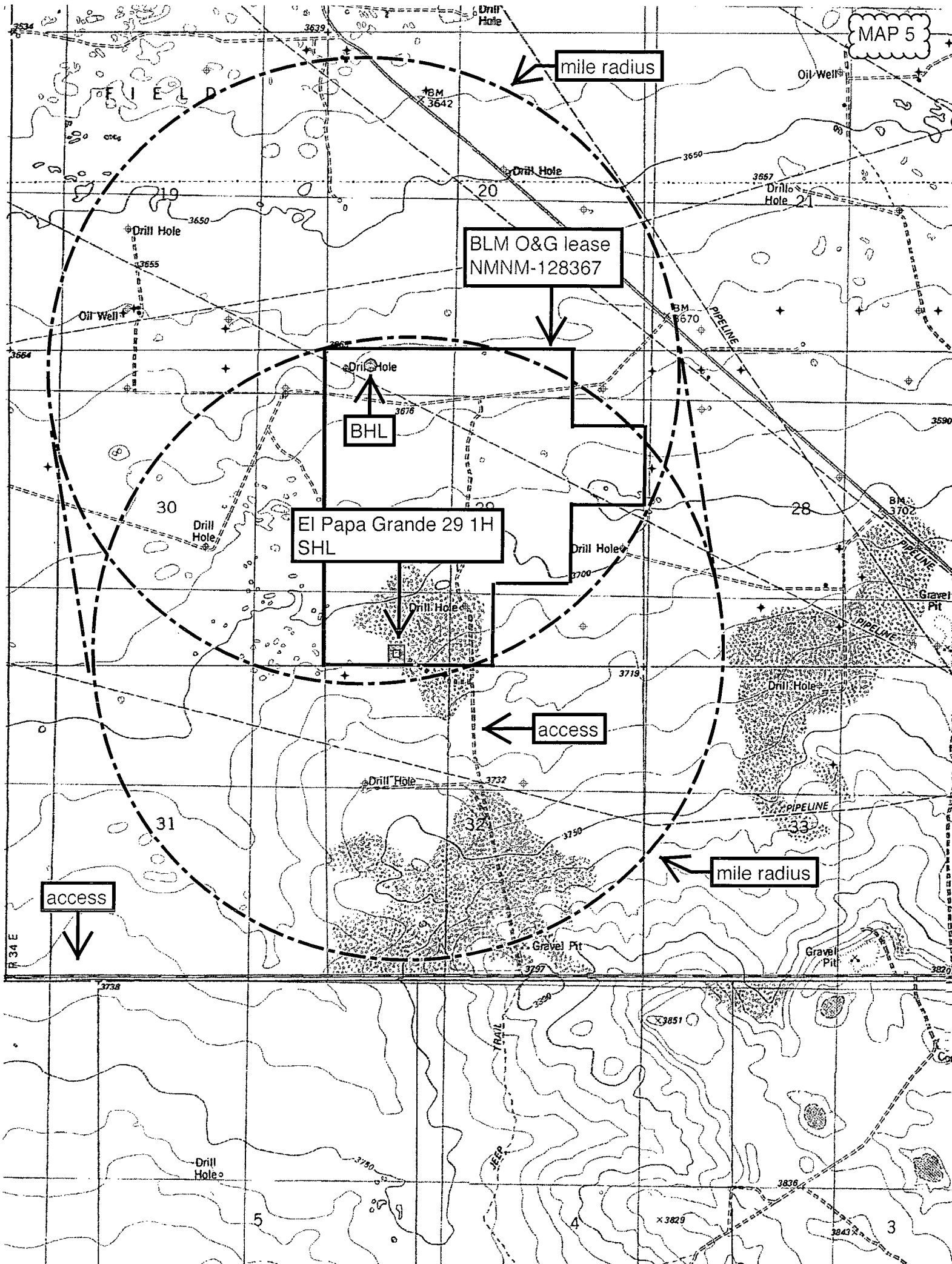
HARCROW SURVEYING, LLC
1107 WATSON, ARTESIA, N.M. 88210
PH: (575) 513-2570 FAX: (575) 746-2158
chad_harcrow77@yahoo.com

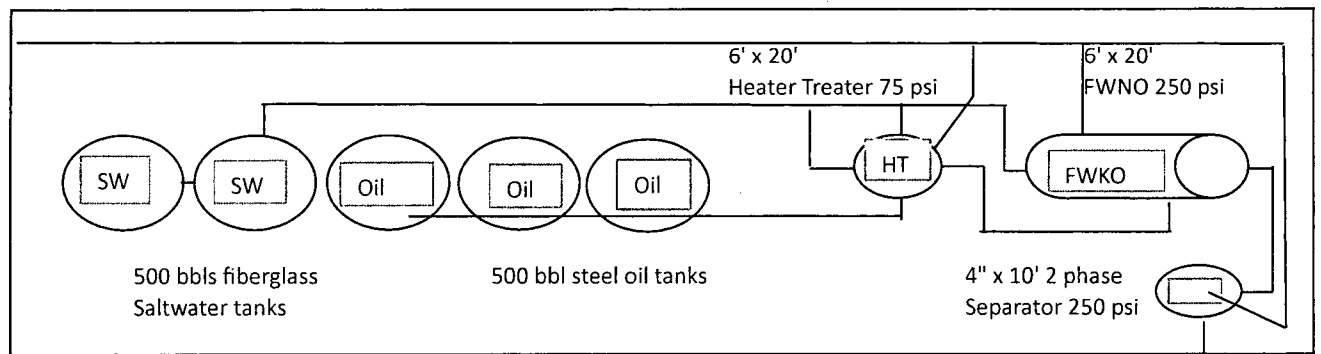


DIAMONDBACK RESOURCES, LLC

EL PAPA GRANDE 29 #1H WELL
LOCATED 200 FEET FROM THE SOUTH LINE
AND 1300 FEET FROM THE WEST LINE OF SECTION 29,
TOWNSHIP 20 SOUTH, RANGE 34 EAST, N.M.P.M.,
LEA COUNTY, NEW MEXICO

SURVEY DATE: 08/06/2013		PAGE: 1 OF 1	
DRAFTING DATE: 08/07/2013			
APPROVED BY: CH	DRAWN BY: TL	FILE: 13-516	





275'

A liner will be layed down before equipment and rock.
 Oil lines 3" XH
 Saltwater line 3" XH coated
 Gas line 2"
 Distance from Heater Treater to first oil tank 96'.

North

