

District I
1625 N. French Dr., Hobbs, NM 88240
Phone: (575) 393-6161 Fax: (575) 393-0720
District II
811 S. First St., Artesia, NM 88210
Phone: (575) 748-1283 Fax: (575) 748-9720
District III
1000 Rio Bruzon Road, Aztec, NM 87410
Phone: (505) 334-6178 Fax: (505) 334-6170
District IV
1220 S. St. Francis Dr., Santa Fe, NM 87505
Phone: (505) 476-3460 Fax: (505) 476-3462

State of New Mexico
Energy, Minerals & Natural Resources Department
OIL CONSERVATION DIVISION
1220 South St. Francis Dr.
Santa Fe, NM 87505

Form C-102
Revised August 1, 2011
Submit one copy to appropriate
District Office

☐ AMENDED REPORT

WELL LOCATION AND ACREAGE DEDICATION PLAT

¹ API Number 70-025-42441	² Pool Code 97955	³ Pool Name WC-025 G 06 92633 19P; BONE SPRING
⁴ Property Code 714194	⁵ Property Name SALADO DRAW 29 26 33 FED COM	⁶ Well Number 6H
⁷ OGRID No. 4323	⁸ Operator Name CHEVRON U.S.A. INC.	⁹ Elevation 3247'

¹⁰ Surface Location

UL or lot no.	Section	Township	Range	Lot Idn	Feet from the	North/South line	Feet from the	East/West line	County
B	29	26 SOUTH	33 EAST, N.M.P.M.		136'	NORTH	1432'	EAST	LEA

¹¹ Bottom Hole Location If Different From Surface

UL or lot no.	Section	Township	Range	Lot Idn	Feet from the	North/South line	Feet from the	East/West line	County
G	32	26 SOUTH	33 EAST, N.M.P.M.		280'	SOUTH	1651'	EAST	LEA

¹² Dedicated Acres 237.41	¹³ Joint or Infill	¹⁴ Consolidation Code	¹⁵ Order No.
--	-------------------------------	----------------------------------	-------------------------

No allowable will be assigned to this completion until all interests have been consolidated or a non-standard unit has been approved by the division.

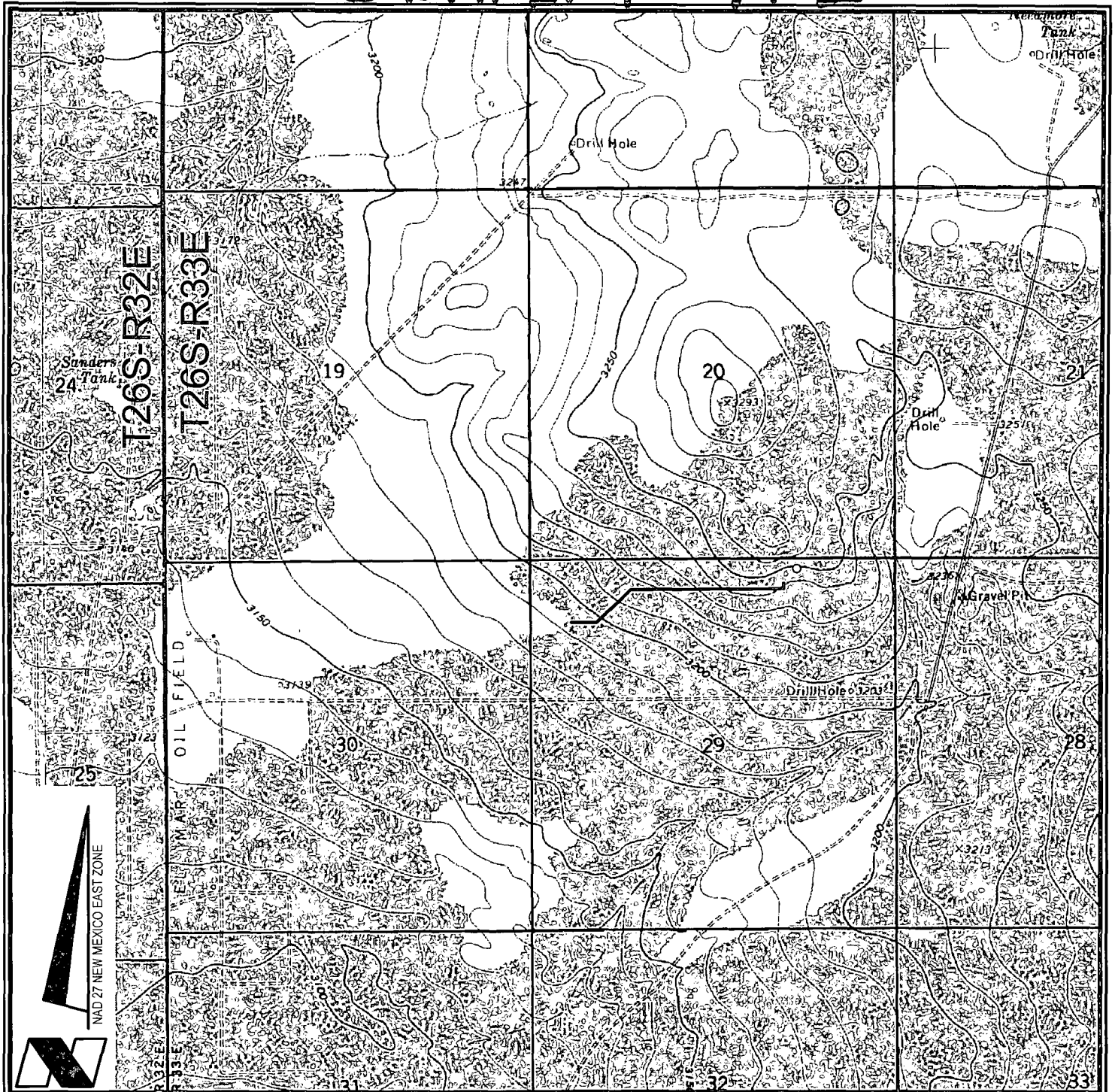
<p>SALADO DRAW 29 26 33 FED COM NO. 6H WELL</p> <p>X= 730,410 NAD 27 Y= 372,254 LAT. 32.021261 LONG. 103.589899</p> <p>X= 771,598 NAD83 Y= 372,311 LAT. 32.021388 LONG. 103.590385</p> <p>ELEVATION +3247' NAVD 88</p>		<p>17 OPERATOR CERTIFICATION</p> <p>I hereby certify that the information contained herein is true and complete to the best of my knowledge and belief, and that this organization either owns a working interest or unleased mineral interest in the land including the proposed bottom hole location or has a right to drill this well at this location pursuant to a contract with an owner of such a mineral or working interest, or to a voluntary pooling agreement or a compulsory pooling order heretofore entered by the division.</p> <p><i>Cindy Herrera-Murillo</i> Signature Date 2-12-15</p> <p>Cindy Herrera-Murillo Printed Name cherreraurillo@chevron.com E-mail Address</p>
<p>PROPOSED BOTTOM HOLE LOCATION</p> <p>X= 730,248 NAD 27 Y= 364,841 LAT. 32.000887 LONG. 103.590588</p> <p>X= 771,438 NAD83 Y= 364,898 LAT. 32.001012 LONG. 103.591053</p>		<p>18 SURVEYOR CERTIFICATION</p> <p>I hereby certify that the well location shown on this plat was plotted from field notes of actual surveys made by me or under my supervision, and that the same is true and correct to the best of my belief.</p> <p>2-12-15 Date of Survey</p> <p><i>[Signature]</i> Signature and Seal of Professional Surveyor</p> <p>15078 Professional Surveyor Number</p> <p>WILLIAM J. DANIEL III REGISTERED PROFESSIONAL SURVEYOR</p>

CORNER COORDINATES TABLE (NAD 27)

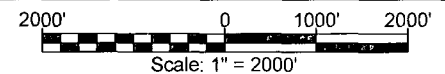
A - Y=372382.09, X=729197.59
B - Y=372390.91, X=730519.68
C - Y=371062.70, X=729207.78
D - Y=371072.13, X=730529.72
E - Y=364553.99, X=729259.12
F - Y=364563.17, X=730579.96

FEB 16 2015

Exhibit A-2



VICINITY MAP



CHEVRON U.S.A. INC.

SALADO DRAW 29 26 33 FED COM NO. 6H WELL
 LOCATED 136' FNL AND 3856' FWL
 SECTION 29, T26S-R33E
 LEA COUNTY, NEW MEXICO



Lafayette New Orleans Houston
 135 Regency Sq. Lafayette, LA 70508
 Ph. 337-237-2200 Fax. 337-232-3299
www.fenstermaker.com

DRAWN BY: BMO

PROJ. MGR.: VHV

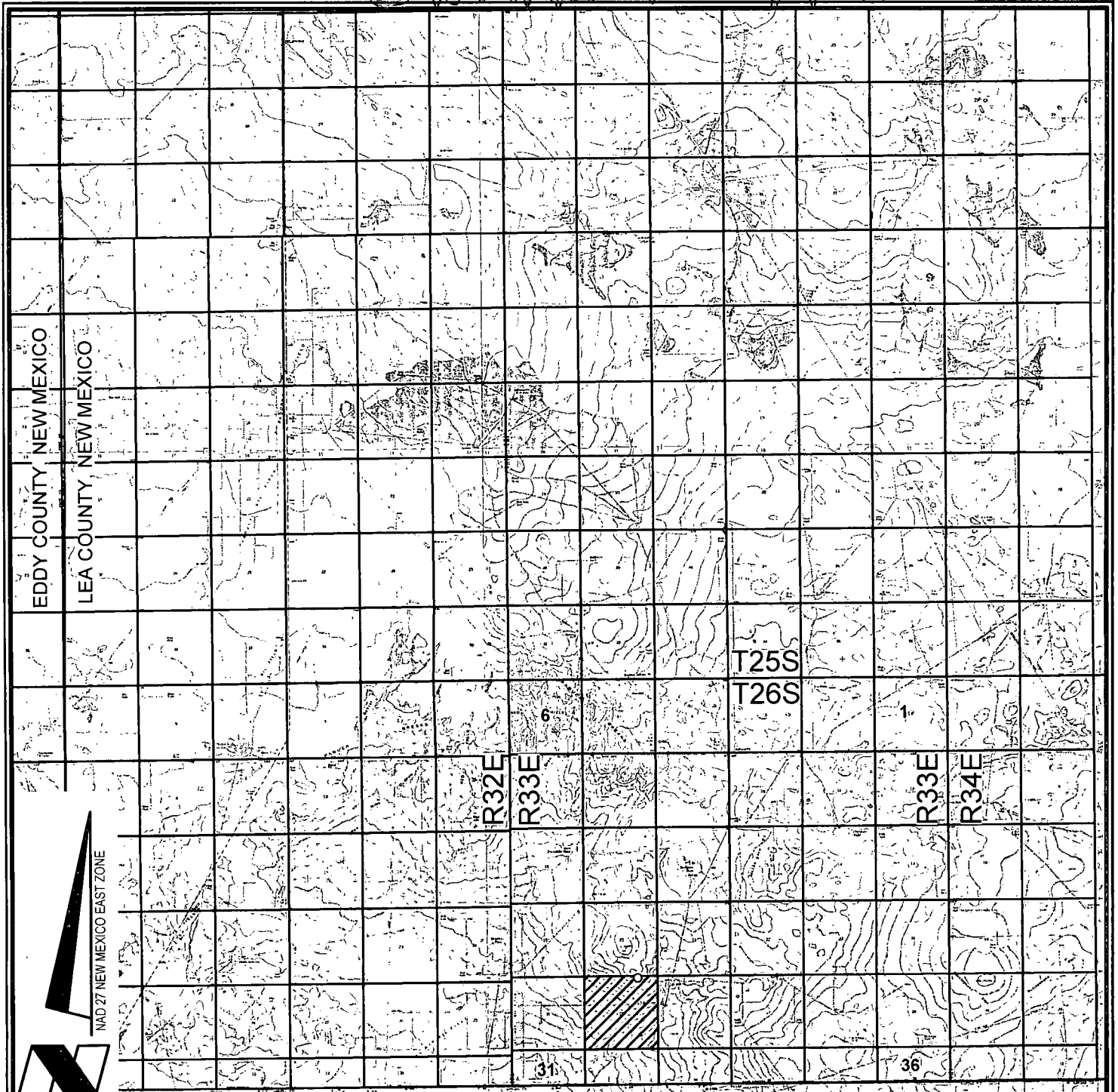
REVISED:

DATE: MAY 09, 2014

SHEET 1 OF 3 SHEETS

FILENAME: T:\2014\2144784\DWG\Salado Draw 29 26 33 Fed Com 6H_APD.dwg

Exhibit A.3



VICINITY MAP

10,000' 0 5,000' 10,000'
Scale: 1" = 10,000'

CHEVRON U.S.A. INC.

SALADO DRAW 29 26 33 FED COM NO. 6H WELL

LOCATED 136' FNL AND 3856' FWL

SECTION 29, T26S-R33E

LEA COUNTY, NEW MEXICO



Lafayette New Orleans Houston
135 Regency Sq. Lafayette, LA 70508
Ph. 337-237-2200 Fax. 337-232-3299
www.fenstermaker.com

DRAWN BY: BMO

PROJ. MGR.: VHV

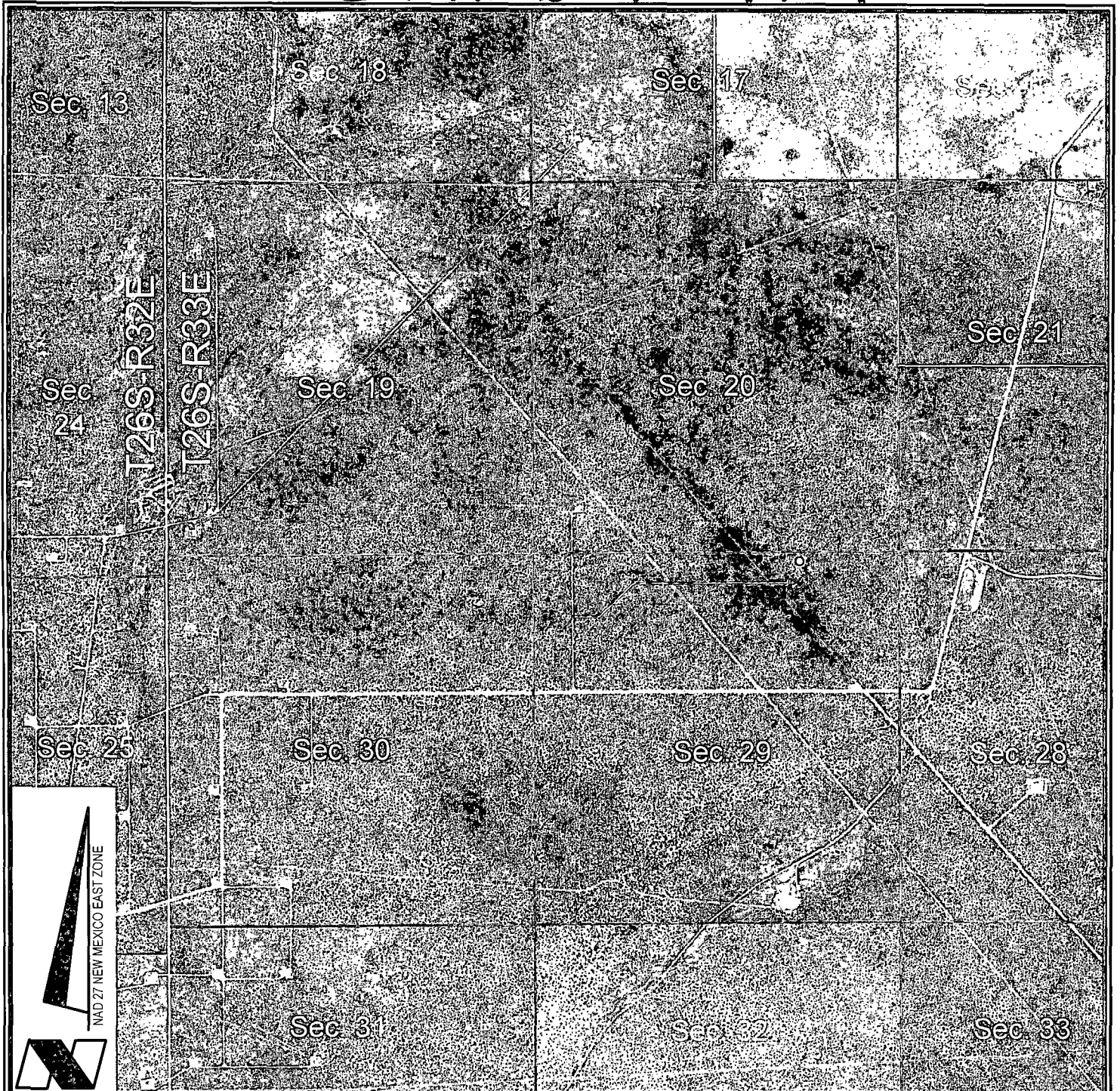
REVISED:

DATE: MAY 09, 2014

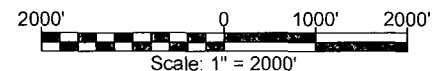
SHEET 2 OF 3 SHEETS




FILENAME: T:\2014\2144784\DWG\Salado Draw 29 26 33 Fed Com 6H_APD.dwg

Exhibit A-4



VICINITY MAP



-  = FEDERAL LAND
-  = FEE LAND
-  = STATE LAND

CHEVRON U.S.A. INC.

SALADO DRAW 29 26 33 FED COM NO. 6H WELL

LOCATED 136' FNL AND 3856' FWL

SECTION 29, T26S-R33E

LEA COUNTY, NEW MEXICO



Lafayette New Orleans Houston
135 Regency Sq. Lafayette, LA 70508
Ph. 337-237-2200 Fax. 337-232-3299
www.fenstermaker.com

DRAWN BY: BMO

REVISED:

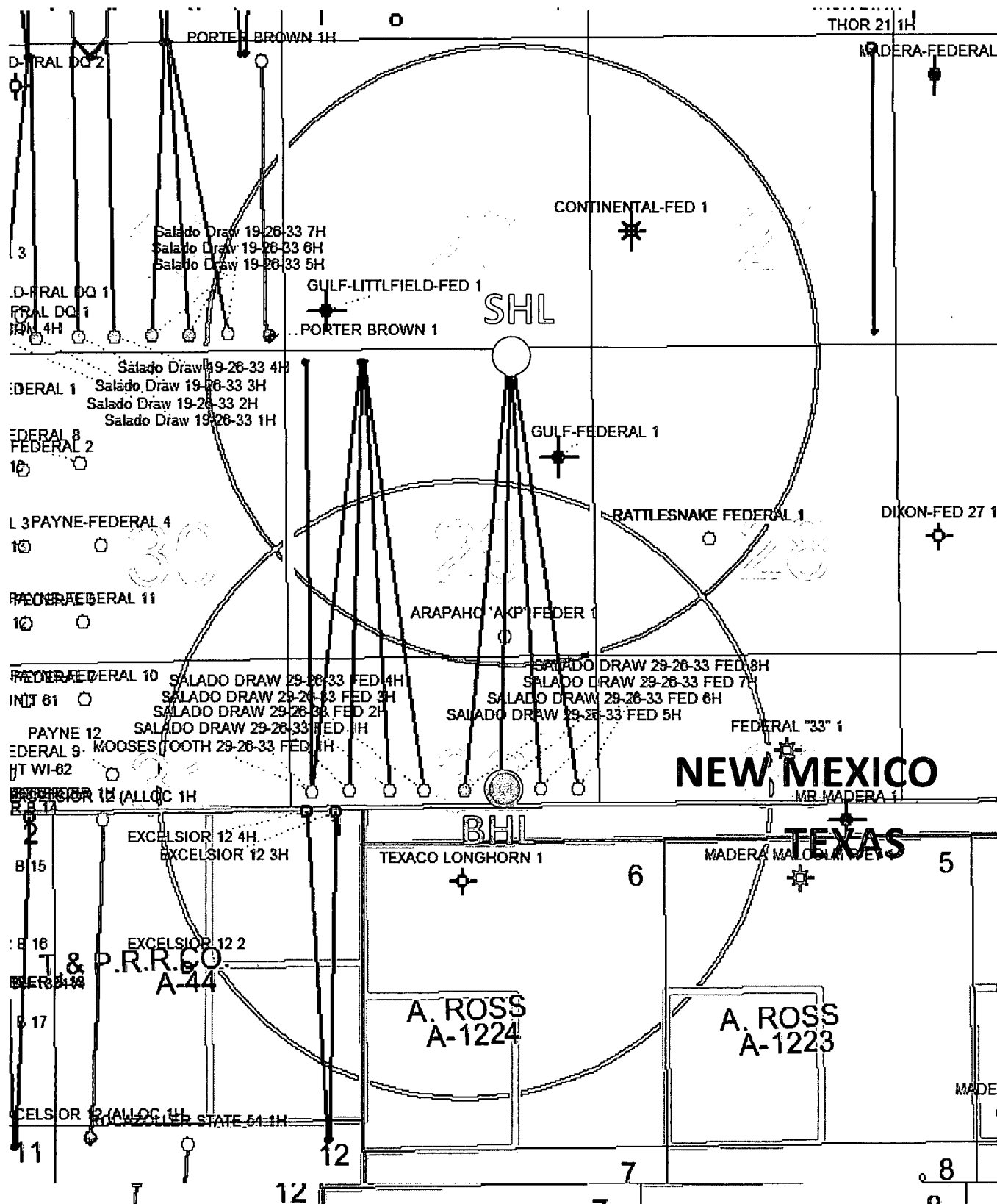
DATE: MAY 09, 2014

PROJ. MGR.: VHV

SHEET 3 OF 3 SHEETS

FILENAME: T:\2014\2144784\DWG\Salado Draw 29 26 33 Fed Com 6H_APD.dwg

SALADO DRAW 29-26-33 FED 6H
SURFACE AHD BOTTOM HOLE LOCATION
TWN 26S RNG 33E SEC 29 & 32
1 MILE RADIUS



NOTE:

Please be advised, that while reasonable efforts are made to locate and verify pipelines and anomalies using our standard pipeline locating equipment, it is impossible to be 100 % effective. As such, we advise using caution when performing work as there is a possibility that pipelines and other hazards, such as fiber optic cables, PVC pipelines, etc. may exist undetected on site.

NOTE:

Many states maintain information centers that establish links between those who dig (excavators) and those who own and operate underground facilities (operators). It is advisable and in most states, law, for the contractor to contact the center for assistance in locating and marking underground utilities. For guidance: New Mexico One Call - www.nmonocall.org

DISCLAIMER: At this time, C.H. Fenstermaker & Associates, LLC has not performed nor was asked to perform any type of engineering, hydrological modeling, flood plain, or "No Rise" certification analyses, including but not limited to determining whether the project will impact flood hazards in connection with federal/FEMA, state, and/or local laws, ordinances and regulations. Accordingly, Fenstermaker makes no warranty or representation of any kind as to the foregoing issues, and persons or entities using this information shall do so at their own risk.

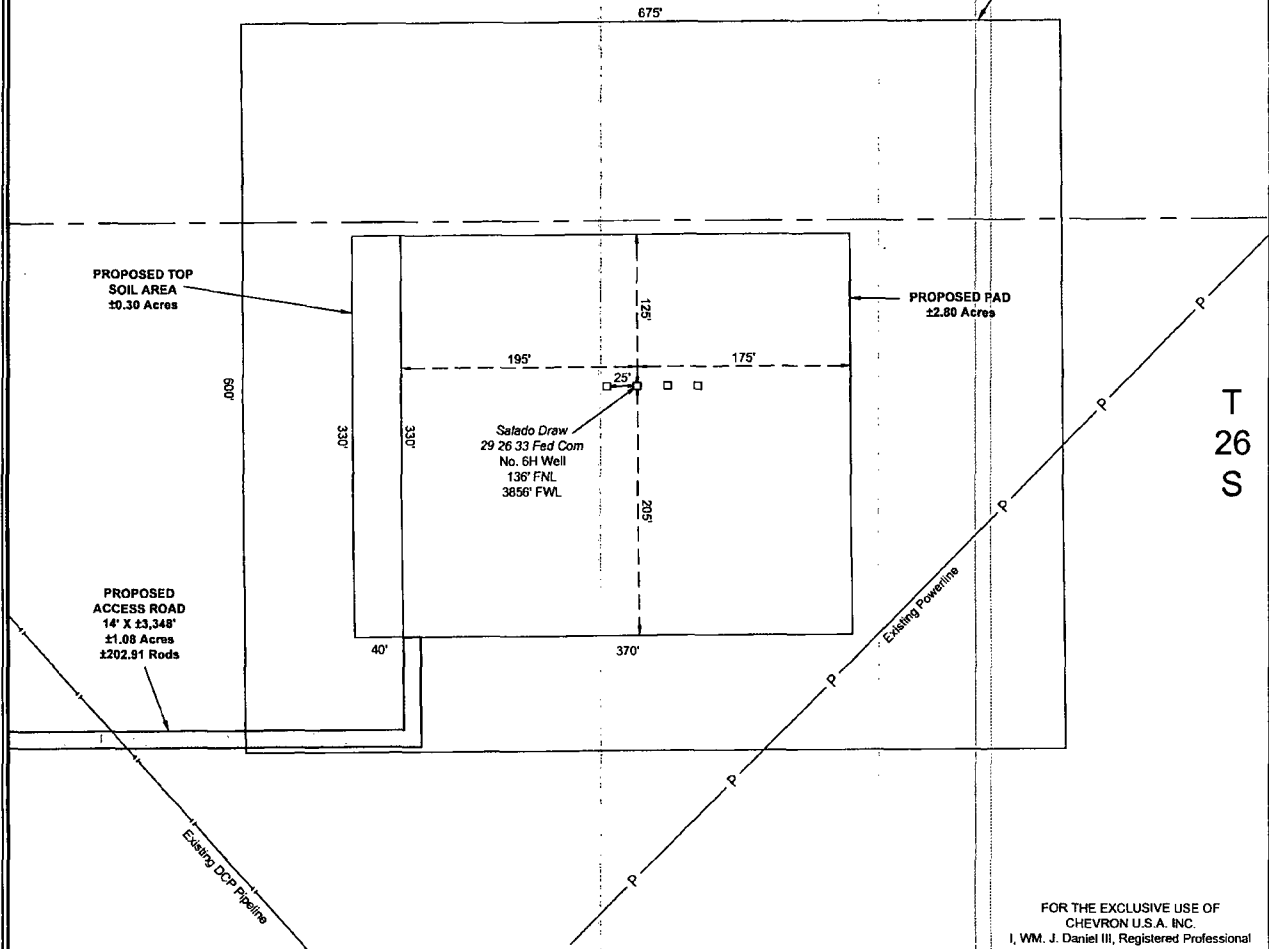
NW ARCH. AREA CORNER	NE ARCH. AREA CORNER	SE ARCH. AREA CORNER	SW ARCH. AREA CORNER	SALADO DRAW 29 26 33 FED COM 6H WELL
X= 730,084 NAD 27 Y= 372,552	X= 730,758 NAD 27 Y= 372,558	X= 730,753 NAD 27 Y= 371,956	X= 730,087 NAD 27 Y= 371,952	X= 730,410 NAD 27 Y= 372,254
ELEVATION +3265' NAVD 88	ELEVATION +3253' NAVD 88	ELEVATION +3239' NAVD 88	ELEVATION +3240' NAVD 88	LAT. 32.021261 LONG. 103.589899
NW PAD CORNER/NE TOP SOIL AREA CORNER	NE PAD CORNER	SE PAD CORNER	SW PAD CORNER/SE TOP SOIL AREA CORNER	X= 771,598 NAD83 Y= 372,311 LAT. 32.021386 LONG. 103.590365
X= 730,215 NAD 27 Y= 372,377	X= 730,585 NAD 27 Y= 372,380	X= 730,587 NAD 27 Y= 372,050	X= 730,217 NAD 27 Y= 372,047	ELEVATION +3247' NAVD 88
ELEVATION +3256' NAVD 88	ELEVATION +3254' NAVD 88	ELEVATION +3240' NAVD 88	ELEVATION +3241' NAVD 88	
NW TOP SOIL AREA CORNER	SW TOP SOIL AREA CORNER			
X= 730,175 NAD 27 Y= 372,377	X= 730,177 NAD 27 Y= 372,047			
ELEVATION +3258' NAVD 88	ELEVATION +3242' NAVD 88			

R 33 E

Sec. 20

Bureau of Land Management

PROPOSED
ARCHAEOLOGICAL
AREA
±5.50 Acres



T
26
S

Sec. 29

Bureau of Land Management

FOR THE EXCLUSIVE USE OF
CHEVRON U.S.A. INC.
I, WM. J. DANIEL III, Registered Professional
Land Surveyor, do hereby state this plat is true
and correct to the best of my knowledge.



WM. J. Daniel III
Registration No. 15078



LEGEND	
—	Section Line
-P-	Existing Powerline
- - -	Existing Pipeline

CHEVRON U.S.A. INC.
PROPOSED PAD & ACCESS ROAD
SALADO DRAW 29 26 33 FED COM 6H WELL
SECTION 29, T26S-R33E
LEA COUNTY, NEW MEXICO

Page 1 of 2



135 Regency Sq. Lafayette, LA 70508
Ph. 337-237-2200 Fax. 337-232-3299
www.fenstermaker.com

Scale: 1"=100'
100' 0' 50' 100'

DRAWN BY: BMO		REVISIONS	
PROJ. MGR.: VHV	No.	DATE:	REVISED BY:
DATE: MAY 09, 2014	No.	DATE:	REVISED BY:
FILENAME: T:\2014\2144784\DWG\Salado Draw 29 26 33 Fed Com 6H_SUP.dwg			

R 33 E

Sec. 20

Bureau of Land Management

SEE
PAGE 1

T
26
S

Sec. 29

Bureau of Land Management

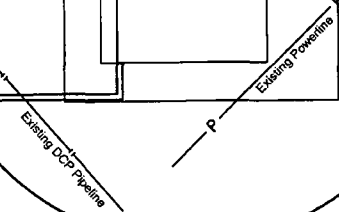
Existing Lease Road

Fnd. 2"
Iron Pipe
w/Cap

Existing
Frac Pond

Proposed
Frac Pond
Expansion

PROPOSED
ACCESS ROAD
14' X ±3,348'
±1.08 Acres
±202.91 Rods



FOR THE EXCLUSIVE USE OF
CHEVRON U.S.A. INC.
I, WM. J. Daniel III, Registered Professional
Land Surveyor, do hereby state this plat is true
and correct to the best of my knowledge.



NOTE:

Please be advised, that while reasonable efforts are made to locate and verify pipelines and anomalies using our standard pipeline locating equipment, it is impossible to be 100 % effective. As such, we advise using caution when performing work as there is a possibility that pipelines and other hazards, such as fiber optic cables, PVC pipelines, etc. may exist undetected on site.

NOTE:

Many states maintain information centers that establish links between those who dig (excavators) and those who own and operate underground facilities (operators). It is advisable and in most states, law, for the contractor to contact the center for assistance in locating and marking underground utilities. For guidance: New Mexico One Call - www.nmonecall.org

DISCLAIMER: At this time, C.H. Fenstermaker & Associates, LLC has not performed nor was asked to perform any type of engineering, hydrological modeling, flood plain, or "No Rise" certification analyses, including but not limited to determining whether the project will impact flood hazards in connection with federal/FEMA, state, and/or local laws, ordinances and regulations. Accordingly, Fenstermaker makes no warranty or representation of any kind as to the foregoing issues, and persons or entities using this information shall do so at their own risk.

LEGEND

- Section Line
- X— Fence Line
- Found Occupation
- P— Existing Powerline
- Existing Pipeline

SURFACE USE PLAT

CHEVRON U.S.A. INC.
PROPOSED PAD & ACCESS ROAD
SALADO DRAW 29 26 33 FED COM 6H WELL
SECTION 29, T26S-R33E
LEA COUNTY, NEW MEXICO

Page 2 of 2



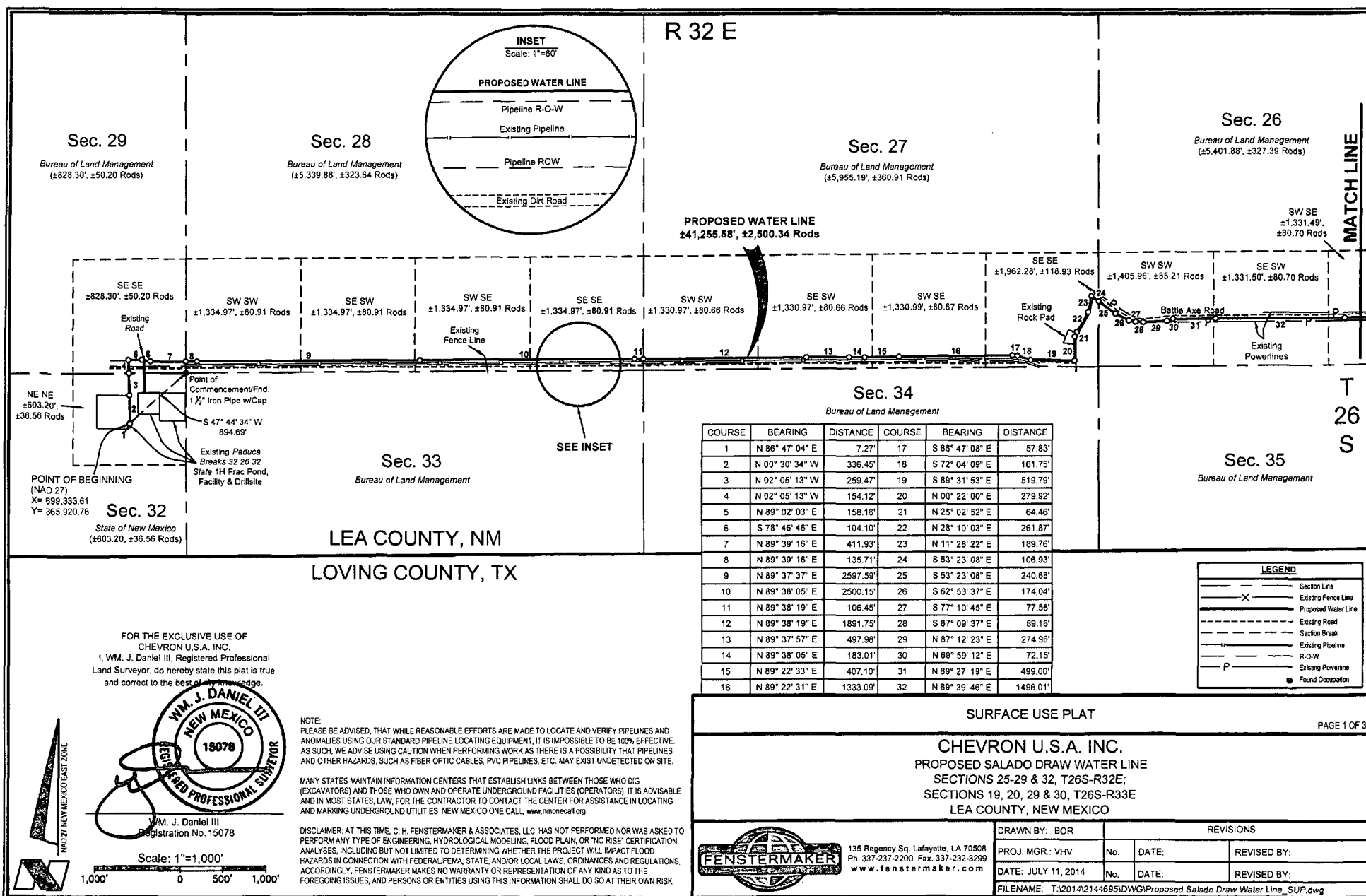
135 Regency Sq. Lafayette, LA 70508
Ph. 337-237-2200 Fax. 337-232-3299
www.fenstermaker.com

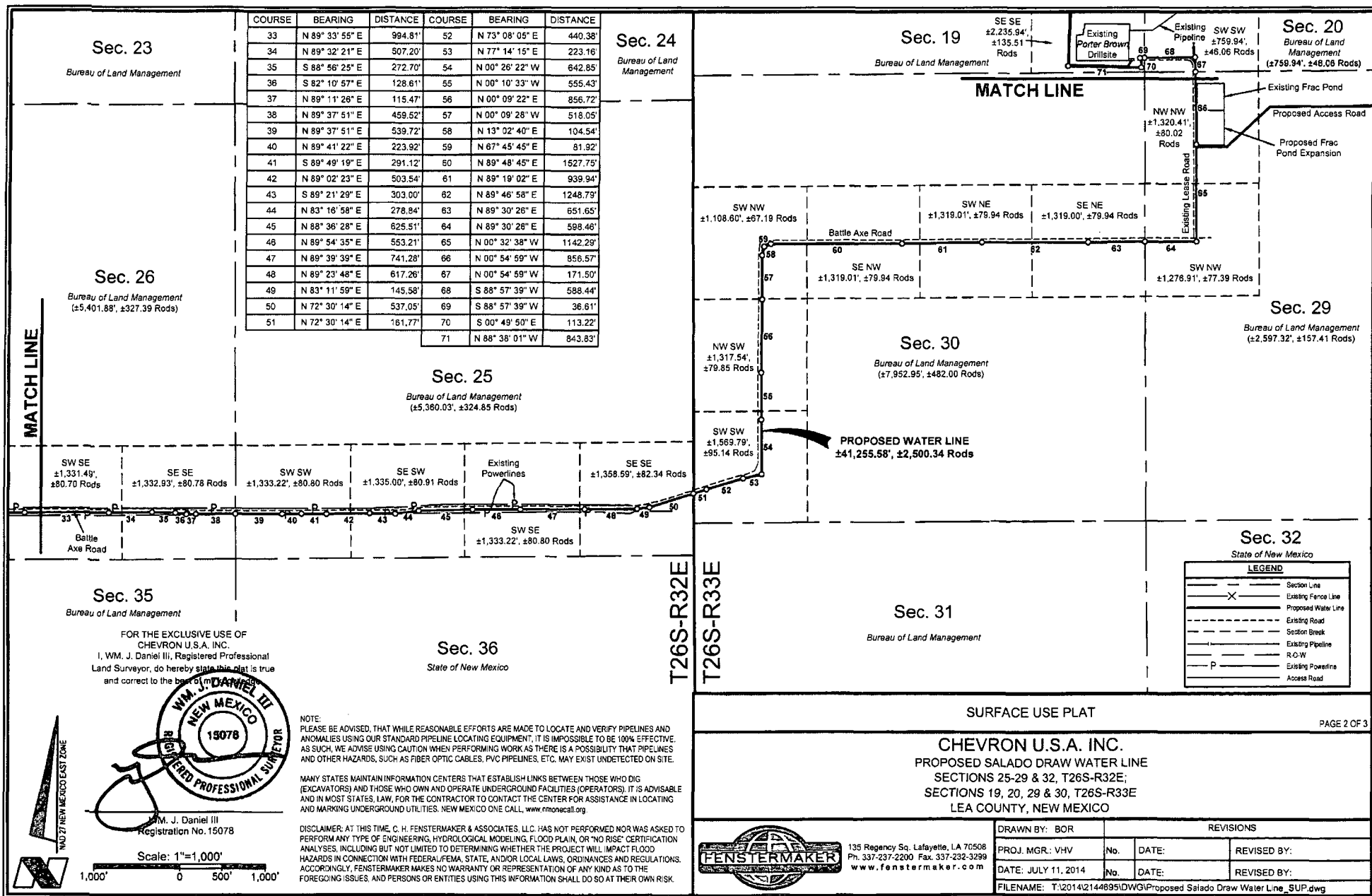
DRAWN BY: BMO		REVISIONS	
PROJ. MGR.: VHV	No.	DATE:	REVISED BY:
DATE: MAY 09, 2014	No.	DATE:	REVISED BY:
FILENAME: T:\2014\2144784\DWG\Salado Draw 29 26 33 Fed Com 6H_SUP.dwg			

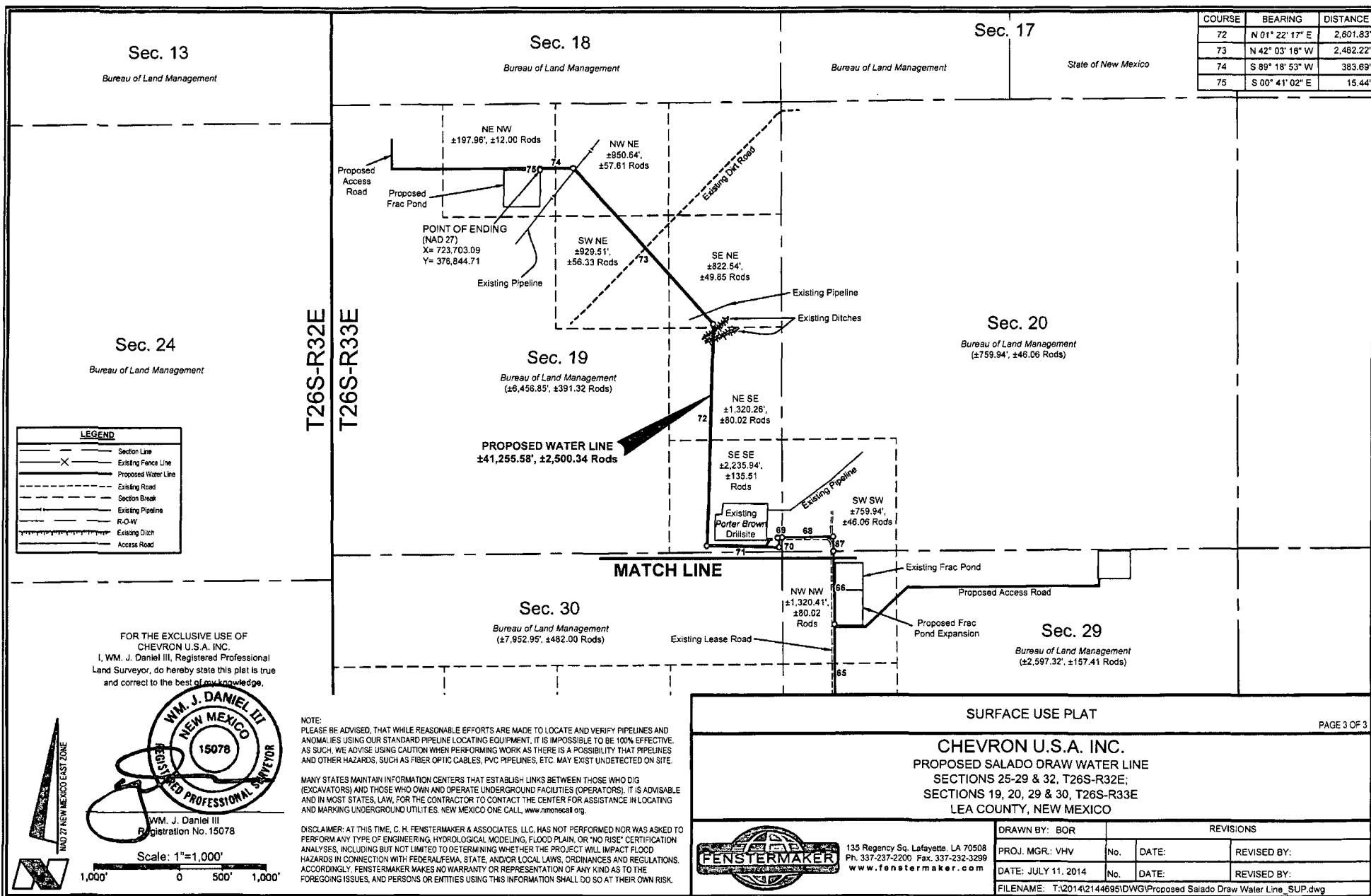
Scale: 1"=300'

300' 0 150' 300'

NAD 27 NEW MEXICO EAST ZONE







**METES AND BOUNDS DESCRIPTION OF
A PROPOSED WATER LINE
SECTIONS 25-29 & 32, T26S-R32E & SECTIONS 19, 20, 29 & 30, T26S-R33E
LEA COUNTY, NEW MEXICO**

Survey of a proposed water line 41,255.58 feet or 2,500.34 rods in length crossing State of New Mexico and Bureau of Land Management lands in Sections 25-29 & 32 of Township 26 South Range 32 East and Sections 19, 20, 29 & 30 of Township 26 South Range 33 East, N.M.P.M Lea County, New Mexico.

COMMENCING at the Northeast corner of said Section 32 of Township 26 South Range 32 East at a found 1 1/2" Iron Pipe with Cap; thence South 47 degrees 44 minutes 34 seconds West 894.69 feet to the **POINT OF BEGINNING** having the following coordinates: X= 699,333.61 and Y= 365,920.76 (New Mexico State Plane Coordinate System, East Zone, NAD 27);

Thence North 86 degrees 47 minutes 04 seconds East 7.27 feet;

Thence North 00 degrees 30 minutes 34 seconds West 336.45 feet;

Thence North 02 degrees 05 minutes 13 seconds West 259.47 feet to a common section line of said Sections 32 and 29, Township 26 South Range 32 East;

Thence North 02 degrees 05 minutes 13 seconds West 154.12 feet;

Thence North 89 degrees 02 minutes 03 seconds East 158.16 feet;

Thence South 78 degrees 46 minutes 46 seconds East 104.10 feet;

Thence North 89 degrees 39 minutes 16 seconds East 411.93 feet to a common section line of said Sections 29 and 28, Township 26 South Range 32 East;

Thence North 89 degrees 39 minutes 16 seconds East 135.71 feet;

Thence North 89 degrees 37 minutes 37 seconds East 2,597.59 feet;

Thence North 89 degrees 38 minutes 05 seconds East 2,500.15 feet;

Thence North 89 degrees 38 minutes 19 seconds East 106.45 feet to a common section line of said Sections 28 and 27, Township 26 South Range 32 East;

Thence North 89 degrees 38 minutes 19 seconds East 1,891.75 feet;

Thence North 89 degrees 37 minutes 57 seconds East 497.98 feet;

Thence North 89 degrees 38 minutes 05 seconds East 183.01 feet;

Thence North 89 degrees 22 minutes 33 seconds East 407.10 feet;

Thence North 89 degrees 22 minutes 31 seconds East 1,333.09 feet;

Thence South 85 degrees 47 minutes 08 seconds East 57.83 feet;

Thence South 72 degrees 04 minutes 09 seconds East 161.75 feet;

Thence South 89 degrees 31 minutes 53 seconds East 519.79 feet;

Thence North 00 degrees 22 minutes 00 seconds East 279.92 feet;

Thence North 25 degrees 02 minutes 52 seconds East 64.46 feet;

Thence North 28 degrees 10 minutes 03 seconds East 261.87 feet;

Thence North 11 degrees 28 minutes 22 seconds East 189.76 feet;

Thence South 53 degrees 23 minutes 08 seconds East 106.93 feet to a common section line of said Sections 27 and 26, Township 26 South Range 32 East;

Thence South 53 degrees 23 minutes 08 seconds East 240.68 feet;

Thence South 62 degrees 53 minutes 37 seconds East 174.04 feet;

Thence South 77 degrees 10 minutes 45 seconds East 77.56 feet;

Thence South 87 degrees 09 minutes 37 seconds East 89.16 feet;

Thence North 87 degrees 12 minutes 23 seconds East 274.96 feet;

Thence North 69 degrees 59 minutes 12 seconds East 72.15 feet;

Thence North 89 degrees 27 minutes 19 seconds East 499.00 feet;

Thence North 89 degrees 39 minutes 46 seconds East 1,496.01 feet;

Thence North 89 degrees 33 minutes 55 seconds East 994.81 feet;

Thence North 89 degrees 32 minutes 21 seconds East 507.20 feet;

Thence South 88 degrees 56 minutes 25 seconds East 272.70 feet;

Thence South 82 degrees 10 minutes 57 seconds East 128.61 feet;

Thence North 89 degrees 11 minutes 26 seconds East 115.47 feet;

Thence North 89 degrees 37 minutes 51 seconds East 459.52 feet to a common section line of said Sections 26 and 25, Township 26 South Range 32 East;

Thence North 89 degrees 37 minutes 51 seconds East 539.72 feet;

Thence North 89 degrees 41 minutes 22 seconds East 223.92 feet;

Thence South 89 degrees 49 minutes 19 seconds East 291.12 feet;

Thence North 89 degrees 02 minutes 23 seconds East 503.54 feet;

Thence South 89 degrees 21 minutes 29 seconds East 303.00 feet;

Thence North 83 degrees 16 minutes 58 seconds East 278.84 feet;

Thence North 88 degrees 36 minutes 28 seconds East 625.51 feet;

Thence North 89 degrees 54 minutes 35 seconds East 553.21 feet;

Thence North 89 degrees 39 minutes 39 seconds East 741.28 feet;

Thence North 89 degrees 23 minutes 48 seconds East 617.26 feet;

Thence North 83 degrees 11 minutes 59 seconds East 145.58 feet;

Thence North 72 degrees 30 minutes 14 seconds East 537.05 feet to a common section line of said Section 25, Township 26 South Range 32 East and Section 30, Township 26 South Range 33 East;

Thence North 72 degrees 30 minutes 14 seconds East 161.77 feet;

Thence North 73 degrees 08 minutes 05 seconds East 440.38 feet;

Thence North 77 degrees 14 minutes 15 seconds East 223.16 feet;

Thence North 00 degrees 26 minutes 22 seconds West 642.85 feet;

Thence North 00 degrees 10 minutes 33 seconds West 555.43 feet;

Thence North 00 degrees 09 minutes 22 seconds East 856.72 feet;

Thence North 00 degrees 09 minutes 28 seconds West 518.05 feet;

Thence North 13 degrees 02 minutes 40 seconds East 104.54 feet;

Thence North 67 degrees 45 minutes 45 seconds East 81.92 feet;

Thence North 89 degrees 48 minutes 45 seconds East 1,527.75 feet;

Thence North 89 degrees 19 minutes 02 seconds East 939.94 feet;

Thence North 89 degrees 46 minutes 58 seconds East 1,248.79 feet;

Thence North 89 degrees 30 minutes 26 seconds East 651.65 feet to a common section line of said Sections 30 and 29, Township 26 South Range 33 East;

Thence North 89 degrees 30 minutes 26 seconds East 598.46 feet;

Thence North 00 degrees 32 minutes 38 seconds West 1,142.29 feet;

Thence North 00 degrees 54 minutes 59 seconds West 856.57 feet to a common section line of said Sections 29 and 20, Township 26 South Range 33 East;

Thence North 00 degrees 54 minutes 59 seconds West 171.50 feet;

Thence South 88 degrees 57 minutes 39 seconds West 588.44 feet to a common section line of said Sections 20 and 19, Township 26 South Range 33 East;

Thence South 88 degrees 57 minutes 39 seconds West 36.61 feet;

Thence South 00 degrees 49 minutes 50 seconds East 113.22 feet;

Thence North 88 degrees 38 minutes 01 seconds West 843.83 feet;

Thence North 01 degrees 22 minutes 17 seconds East 2,601.83 feet;

Thence North 42 degrees 03 minutes 16 seconds West 2,462.22 feet;

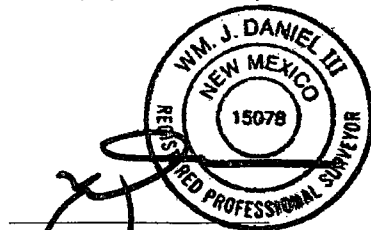
Thence South 89 degrees 18 minutes 53 seconds West 383.69 feet;

Thence South 00 degrees 41 minutes 02 seconds East 15.44 feet to the POINT OF ENDING having the following coordinates: X= 723,703.09 and Y= 376,844.71 (New Mexico State Plane Coordinate System, East Zone, NAD 27);

Reference is hereby made to a separate plat of the subject proposed water line.

The bearings recited hereon are oriented to NAD 27 New Mexico East Zone.

This description represents a survey made on the ground of a proposed water line and is intended solely for that purpose. This description does not represent a boundary survey.



Wm. J. Daniel III
Registered Professional Land Surveyor #15078
C.H. Fenstermaker & Associates, LLC
135 Regency Square
Lafayette, LA 70508
337-237-2200

NOTE:

Please be advised, that while reasonable efforts are made to locate and verify pipelines and anomalies using our standard pipeline locating equipment, it is impossible to be 100 % effective. As such, we advise using caution when performing work as there is a possibility that pipelines and other hazards, such as fiber optic cables, PVC pipelines, etc. may exist undetected on site.

NOTE:

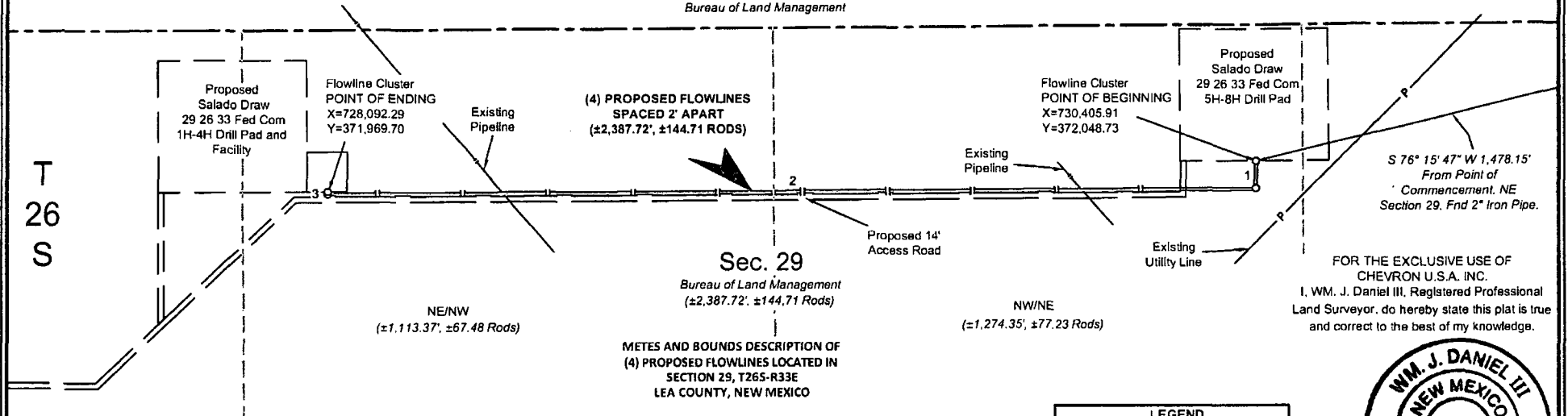
Many states maintain information centers that establish links between those who dig (excavators) and those who own and operate underground facilities (operators). It is advisable and in most states, law, for the contractor to contact the center for assistance in locating and marking underground utilities. For guidance: New Mexico One Call - www.nmonecall.org

COURSE	BEARING	DISTANCE
1	S 00° 34' 07" E	68.49'
2	S 89° 37' 00" W	2,314.28'
3	N 00° 48' 24" W	4.95'

R 33 E

Sec. 20

Bureau of Land Management



DISCLAIMER: At this time, C.H. Fenstermaker & Associates, LLC has not performed nor was asked to perform any type of engineering, hydrological modeling, flood plain, or "No Rise" certification analyses, including but not limited to determining whether the project will impact flood hazards in connection with federal/FEMA, state, and/or local laws, ordinances and regulations. Accordingly, Fenstermaker makes no warranty or representation of any kind as to the foregoing issues, and persons or entities using this information shall do so at their own risk.

LEGEND	
	Section Line
	Section Break
	Proposed Flowlines
	Existing Pipelines
	Existing Utility Line



CHEVRON U.S.A. INC.
PROPOSED FLOWLINES
SALADO DRAW 29 26 33 FED COM 5H-8H WELLS
SECTION 29, T26S-R33E
LEA COUNTY, NEW MEXICO

DRAWN BY: GDG		REVISIONS	
PROJ. MGR.: VHV	No.	DATE:	REVISED BY:
DATE: June 2, 2014	No.	DATE:	REVISED BY:
FILENAME: T:\2014\2144783\DWG\Salado Draw 29 26 33 Fed Com 5H-8H FL SUP.dwg			



135 Regency Sq. Lafayette, LA 70508
Ph. 337-237-2200 Fax. 337-232-3299
www.fenstermaker.com

SURVEY OF (4) PROPOSED FLOWLINES 2,387.72 FEET OR 144.71 RODS IN LENGTH CROSSING BUREAU OF LAND MANAGEMENT LAND IN SECTION 29, TOWNSHIP 26 SOUTH RANGE 33 EAST, N.M.P.M. LEA COUNTY, NEW MEXICO.
COMMENCING AT A FOUND 2" IRON PIPE, LOCATED AT THE NORTHEAST CORNER OF SAID SECTION 29 TOWNSHIP 26 SOUTH RANGE 33 EAST; THENCE SOUTH 76 DEGREES 15 MINUTES 47 SECONDS WEST 1,478.15 FEET TO THE POINT OF BEGINNING. SAID POINT OF BEGINNING HAVING THE FOLLOWING COORDINATES: X= 730,405.91, Y= 372,048.73 (NEW MEXICO STATE PLANE COORDINATE EAST ZONE, NAD 27).

THENCE SOUTH 00 DEGREES 34 MINUTES 07 SECONDS EAST 68.49 FEET;

THENCE SOUTH 89 DEGREES 37 MINUTES 00 SECONDS WEST 2,314.28 FEET;

THENCE NORTH 00 DEGREES 48 MINUTES 24 SECONDS WEST 4.95 FEET TO THE POINT OF ENDING. SAID POINT OF ENDING HAVING THE FOLLOWING COORDINATES: X= 728,092.29, Y= 371,969.70 (NEW MEXICO STATE PLANE COORDINATE EAST ZONE, NAD 27).

THE BEARINGS RECITED HEREON ARE ORIENTED TO NEW MEXICO STATE PLANE COORDINATE SYSTEM, EAST ZONE, NAD 27.

THIS DESCRIPTION REPRESENTS A SURVEY MADE ON THE GROUND FOR A SURFACE EASEMENT AND INTENDED SOLELY FOR THAT PURPOSE. THIS DESCRIPTION DOES NOT REPRESENT A BOUNDARY SURVEY.



Well Pad/Facility Pad (typical)

varies

43' Flowline ROW

14' Road
EDS ROW

15'

1" = 30'

TYPICAL DETAIL SECTION 19



Chevron
Midcontinent Business Unit

SALADO DRAW
DRILLING PROGRAM
ROAD DETAIL
TYPICAL ROAD SECTION DETAIL

CERTIFICATION

I hereby certify that I, or someone under my direct supervision, have inspected the drill site and access route proposed herein; that I am familiar with the conditions which currently exist; that I have full knowledge of state and Federal laws applicable to this operation; that the statements made in this APD package are, to the best of my knowledge, true and correct; and, that the work associated with the operations proposed will be performed in conformity with this APD package and the terms and conditions under which it is approved. I also certify that I, or the company I represent, am responsible for the operations conducted under this application. These statements are subject to the provisions of 18 U.S.C. 1001 for the filing of a false statement.

Executed this 30th day of July, 2014

Name: 
James Ward - Project Manager

Address: 1400 Smith Street, 40050
Houston, TX 77002

Office 713-372-1748

E-mail: jwgb@chevron.com