

DISTRICT I
1625 N. French Dr., Hobbs, NM 88240
Phone: (575) 393-6161 Fax: (575) 393-0720
DISTRICT II
811 S. First St., Artesia, NM 88201
Phone: (575) 748-1283 Fax: (575) 748-9720
DISTRICT III
1000 Rio Brazos Rd., Aztec, NM 87410
Phone: (505) 334-6178 Fax: (505) 334-6179
DISTRICT IV
1220 S. St. Francis Dr., Santa Fe, NM 87505
Phone: (505) 476-3460 Fax: (505) 476-3462

HOBBS OCD

APR 29 2015

RECEIVED

State of New Mexico
Energy, Minerals & Natural Resources Department
OIL CONSERVATION DIVISION
1220 South St. Francis Dr.
Santa Fe, New Mexico 87505

Form C-102
Revised August 1, 2011
Submit one copy to appropriate
District Office
☐ AMENDED REPORT

WELL LOCATION AND ACREAGE DEDICATION PLAT

API Number 30-025- 42534 (IBD)	Pool Code 96101	Pool Name SWD; Devonian
Property Code 314793 (IBD)	Property Name Limestone SWD	Well Number 1
OGRID No. 308339	Operator Name OWL SWD Operating, L.L.C.	Elevation 3502'

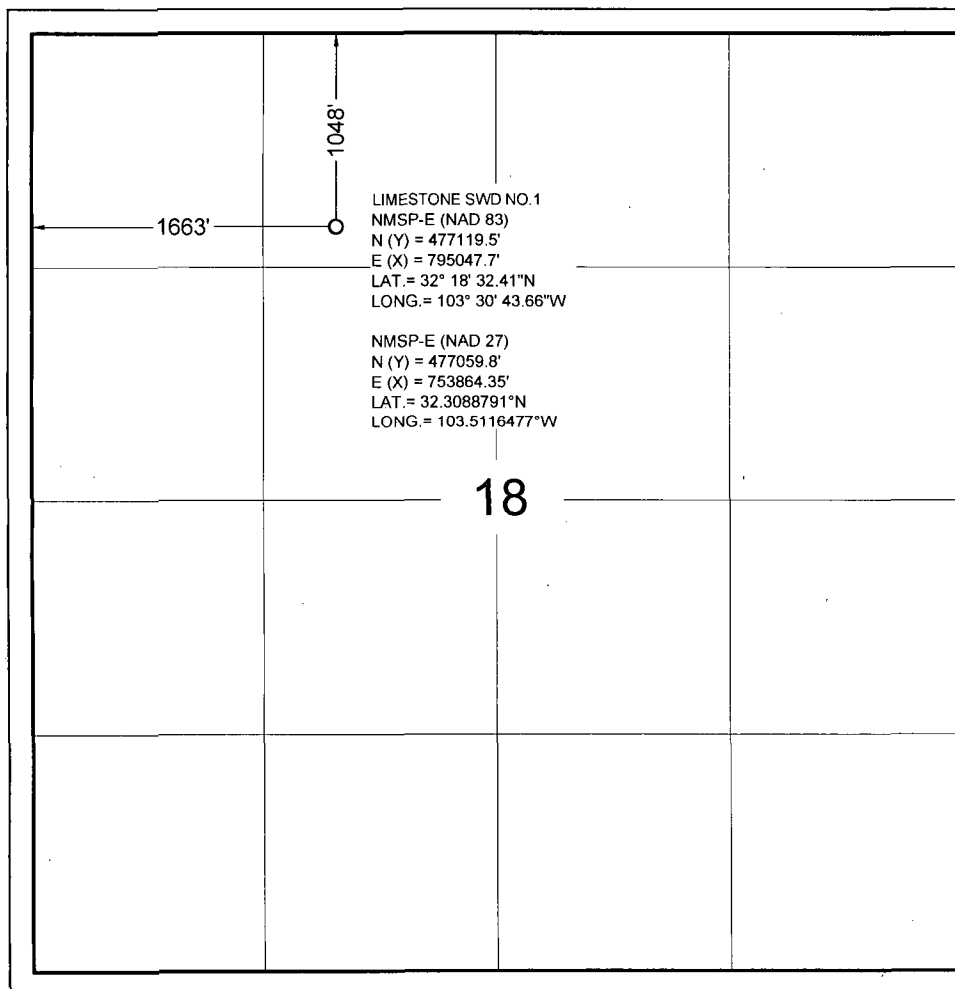
Surface Location

UL or lot no.	Section	Township	Range	Lot Idn	Feet from the	North/South line	Feet from the	East/West line	County
C	18	23S	34E		1048	N	1663	W	LEA

Bottom Hole Location If Different From Surface

UL or lot no.	Section	Township	Range	Lot Idn	Feet from the	North/South line	Feet from the	East/West line	County
Dedicated Acres	Joint or Infill	Consolidated Code	Order No.						

No allowable will be assigned to this completion until all interests have been consolidated or a non-standard unit has been approved by the division.



OPERATOR CERTIFICATION

I hereby certify that the information contained herein is true and complete to the best of my knowledge and belief, and that this organization either owns a working interest or unleased mineral interest in the land including the proposed bottom hole location or has a right to drill this well at this location pursuant to a contract with an owner of such a mineral or working interest, or to voluntary pooling agreement or a compulsory pooling order heretofore entered by the division.

Ben Stone 4/20/2015
Signature Date

Ben Stone - Agent for OWL SWD Operating
Print Name

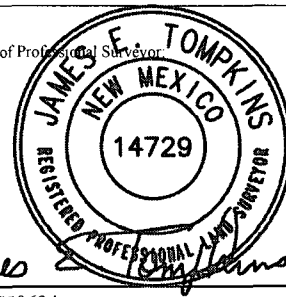
ben@sosconsulting.us
E-mail Address

SURVEYORS CERTIFICATION

I hereby certify that the well location shown on this plat was plotted from field notes of actual surveys made by me or under my supervision, and that the same is true and correct to the best of my belief.

APRIL 17, 2015
Date of Survey

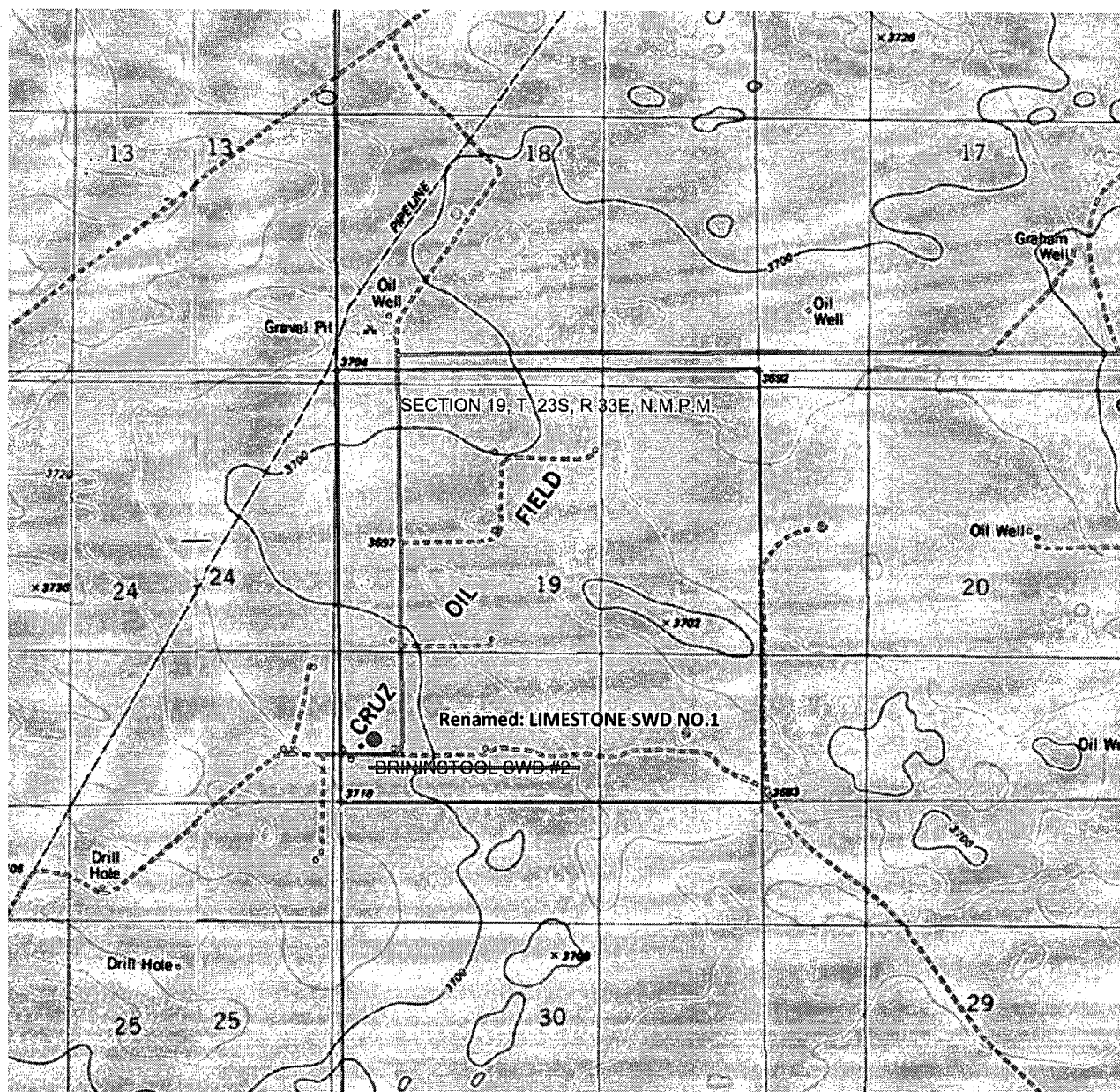
Signature and Seal of Professional Surveyor



Job No. WTC50634
JAMES E. TOMPKINS 14729
Certificate Number

MAY 01 2015

LOCATION VERIFICATION MAP



0 1000 2000 4000

GRAPHIC SCALE 1" = 2000'

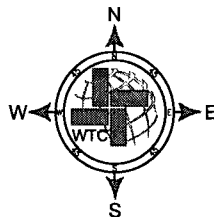
SECTION 19, T. 23S, R. 33E, N.M.P.M.

COUNTY: LEA STATE: NM

DESCRIPTION: 784' FSL & 419' FWL

OPERATOR OWL SWD Operating, LLC

WELL NAME: BRININSTOOL CWD #2
Renamed: Limestone SWD No.1



DRIVING DIRECTIONS:

FROM JAL AT THE INTERSECTION OF STATE HIGHWAY 18 AND W NM HIGHWAY 128. GO WEST/NORTHWEST ON W NM HIGHWAY 128 FOR 24.0 MILES TO A LEASE ROAD (BRININSTOOL ROAD). TURN RIGHT. GO NORTH ON LEASE ROAD (BRININSTOOL ROAD) 4.2 MILES TO A LEASE ROAD TURN LEFT. GO WEST/ NORTHWEST FOR 2.8 MILES. LOCATION FLAG IS 187.0 FEET NORTH.

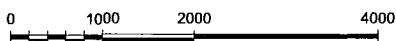
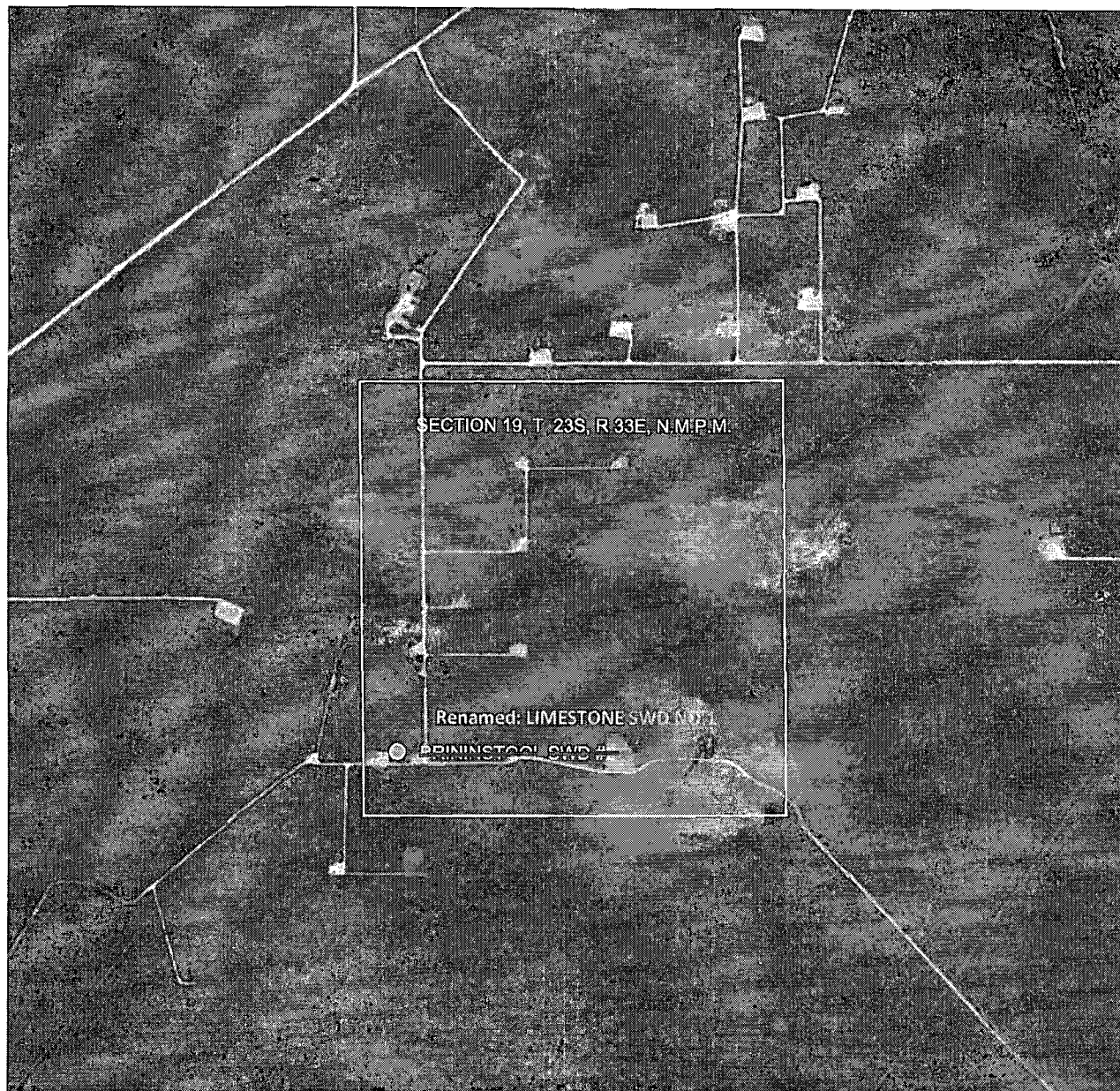


WTC, INC.
405 S.W. 1st Street
Andrews, TX 79714
(432) 523-2181



JOB No.: WTC50375

AERIAL MAP



GRAPHIC SCALE 1" = 2000'

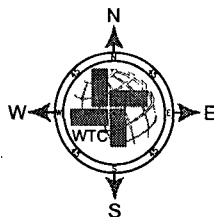
SECTION 19, T. 23S, R. 33E, N.M.P.M.

COUNTY: LEA STATE: NM

DESCRIPTION: 784' FSL & 419' FWL

OPERATOR: OWL SWD Operating, LLC

WELL NAME: ~~BRININSTOOL CWD #1~~
Renamed: Limestone SWD No. 1



DRIVING DIRECTIONS:

FROM JAL AT THE INTERSECTION OF STATE HIGHWAY 18 AND W NM HIGHWAY 128. GO WEST/NORTHWEST ON W NM HIGHWAY 128 FOR 24.0 MILES TO A LEASE ROAD (BRININSTOOL ROAD). TURN RIGHT. GO NORTH ON LEASE ROAD (BRININSTOOL ROAD) 4.2 MILES TO A LEASE ROAD TURN LEFT. GO WEST/ NORTHWEST FOR 2.8 MILES. LOCATION FLAG IS 187.0 FEET NORTH.

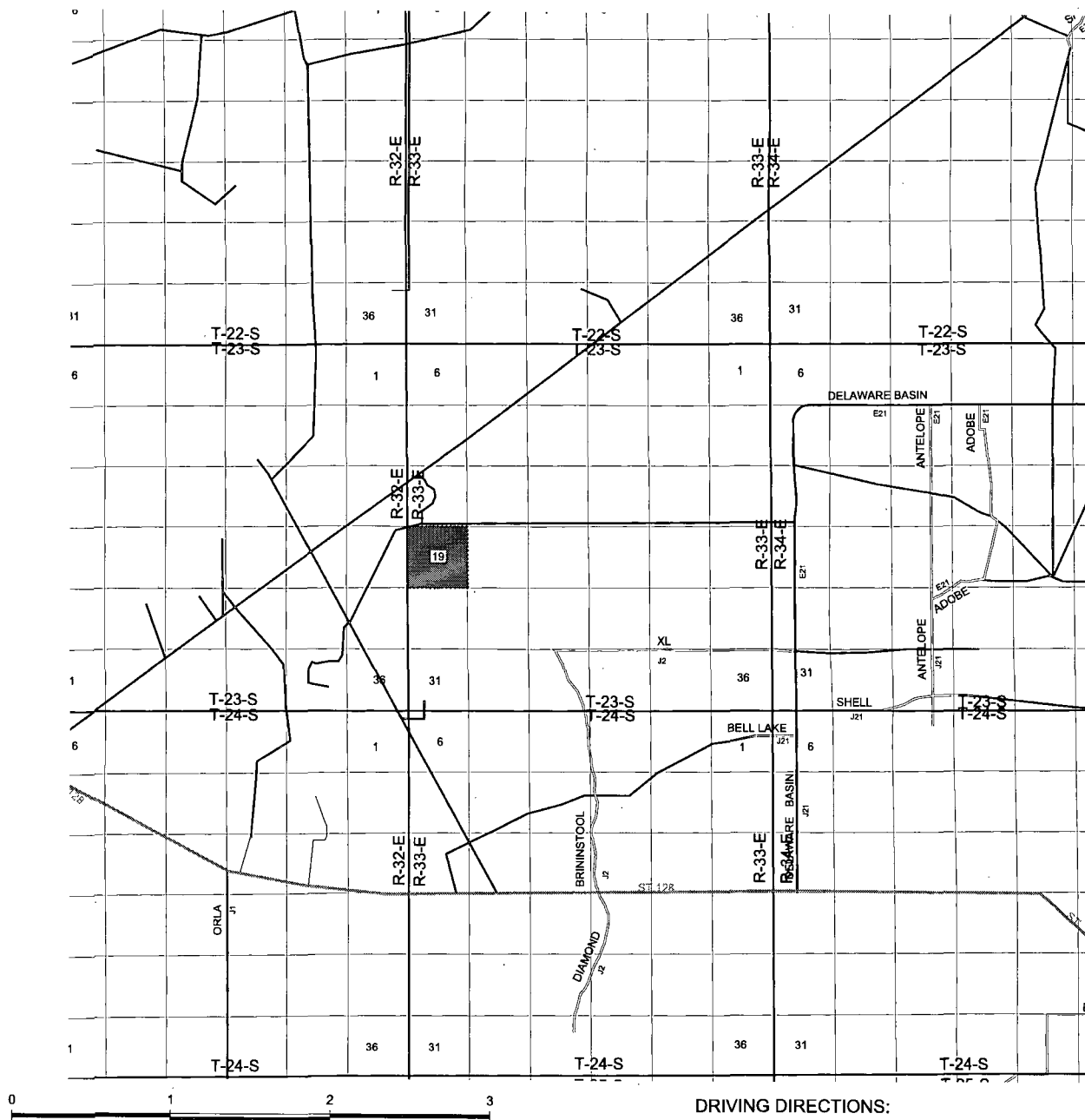


WTC, INC.
405 S.W. 1st Street
Andrews, TX 79714
(432) 523-2181



JOB No.: WTC50375

VICINITY MAP



GRAPHIC SCALE 1" = 1 MILE

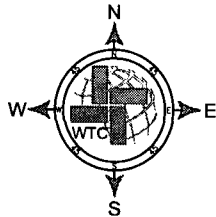
SECTION 19, T 23S, R 33E, N.M.P.M.

COUNTY: LEA STATE: NM

DESCRIPTION: 784' FSL & 419' FWL

OPERATOR OWL SWD Operating, LLC

WELL NAME: ~~BRININSTOOL SWD-2~~
Renamed: Limestone SWD No. 1



DRIVING DIRECTIONS:

FROM JAL AT THE INTERSECTION OF STATE HIGHWAY 18 AND W NM HIGHWAY 128. GO WEST/NORTHWEST ON W NM HIGHWAY 128 FOR 24.0 MILES TO A LEASE ROAD (BRININSTOOL ROAD). TURN RIGHT. GO NORTH ON LEASE ROAD (BRININSTOOL ROAD) 4.2 MILES TO A LEASE ROAD. TURN LEFT. GO WEST/ NORTHWEST FOR 2.8 MILES. LOCATION FLAG IS 187.0 FEET NORTH.



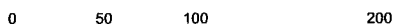
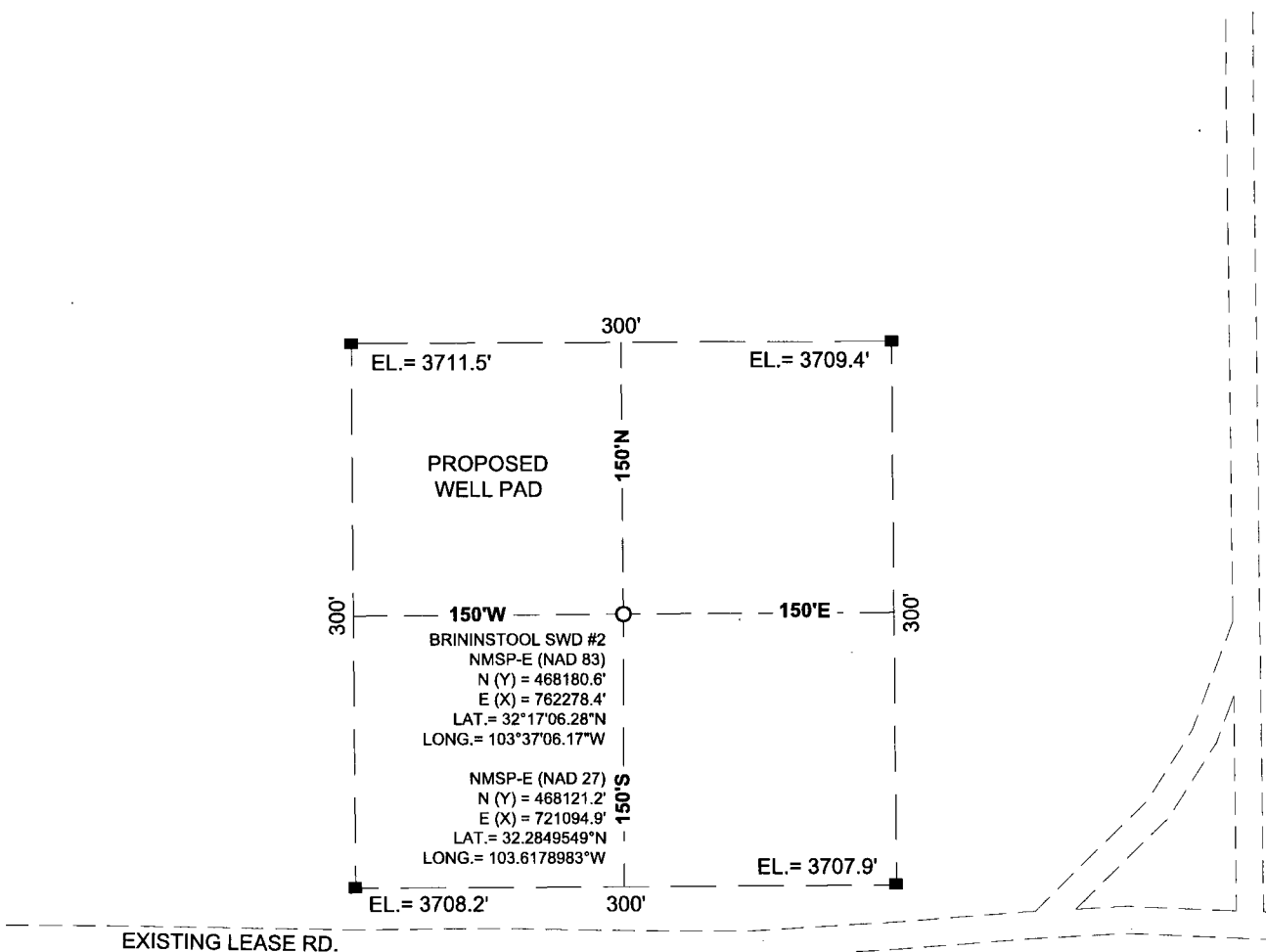
WTC, INC.
405 S.W. 1st Street
Andrews, TX 79714
(432) 523-2181



OILFIELD WATER LOGISTICS

JOB No.: WTC50375

SITE LOCATION



GRAPHIC SCALE 1" = 100'

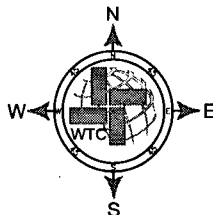
SECTION 19, T 23S, R 33E, N.M.P.M.

COUNTY: LEA STATE: NM

DESCRIPTION: 784' FNL & 419' FWL

OPERATOR: OWL SWD Operating, LLC

WELL NAME: ~~BRININSTOOL SWD #2~~
 Renamed: Limestone SWD No.1



DRIVING DIRECTIONS:

FROM JAL AT THE INTERSECTION OF STATE HIGHWAY 18 AND W NM HIGHWAY 128. GO WEST/NORTHWEST ON W NM HIGHWAY 128 FOR 24.0 MILES TO A LEASE ROAD (BRININSTOOL ROAD). TURN RIGHT. GO NORTH ON LEASE ROAD (BRININSTOOL ROAD) 4.2 MILES TO A LEASE ROAD. TURN LEFT. GO WEST/ NORTHWEST FOR 2.8 MILES. LOCATION FLAG IS 187.0 FEET NORTH.



W T C, INC.
 405 S.W. 1st Street
 Andrews, TX 79714
 (432) 523-2181



OILFIELD WATER LOGISTICS

JOB No.: WTC50375