

DISTRICT I
1625 N. French Dr., Hobbs, NM 88240
Phone: (575) 393-6161 Fax: (575) 393-0720

DISTRICT II
811 S. First St., Artesia, NM 88210
Phone: (575) 748-1283 Fax: (575) 748-9720

DISTRICT III
1000 Rio Brazos Road, Aztec, NM 87410
Phone: (505) 334-6178 Fax: (505) 334-6170

DISTRICT IV
1220 S. St. Francis Dr., Santa Fe, NM 87505
Phone: (505) 476-3460 Fax: (505) 476-3462

State of New Mexico
Energy, Minerals & Natural Resources Department **HOBBS OCD**
OIL CONSERVATION DIVISION
1220 South St. Francis Dr.
Santa Fe, New Mexico 87505

Form C-102
Revised August 1, 2011
Submit one copy to appropriate
District Office

MAY 12 2015

☐ AMENDED REPORT

RECEIVED

WELL LOCATION AND ACREAGE DEDICATION PLAT

API Number 30-025-42552	Pool Code 67200	Pool Name Wantz ; ABD
Property Code 24426	Property Name HAWK A	Well Number 39
OGRID No. 873	Operator Name APACHE CORPORATION	Elevation 3513'

Surface Location

UL or lot No. B	Section 8	Township 21-S	Range 37-E	Lot Idn	Feet from the 415	North/South line NORTH	Feet from the 2075	East/West line EAST	County LEA
---------------------------	---------------------	-------------------------	----------------------	---------	-----------------------------	----------------------------------	------------------------------	-------------------------------	----------------------

Bottom Hole Location If Different From Surface

UL or lot No.	Section	Township	Range	Lot Idn	Feet from the	North/South line	Feet from the	East/West line	County
Dedicated Acres 40	Joint or Infill	Consolidation Code	Order No.						

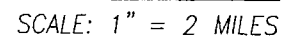
NO ALLOWABLE WILL BE ASSIGNED TO THIS COMPLETION UNTIL ALL INTERESTS HAVE BEEN CONSOLIDATED OR A NON-STANDARD UNIT HAS BEEN APPROVED BY THE DIVISION

<p>GEODETIC COORDINATES NAD 27 NME</p> <p>SURFACE LOCATION Y= 547323.9 N X= 854710.0 E</p> <p>LAT.=32.499443° N LONG.=103.182841° W</p> <p>LAT.=32° 29' 58" N LONG.=103° 10' 58" W</p>		<p>OPERATOR CERTIFICATION</p> <p>I hereby certify that the information herein is true and complete to the best of my knowledge and belief, and that this organization either owns a working interest or unleased mineral interest in the land including the proposed bottom hole location or has a right to drill this well at this location pursuant to a contract with an owner of such mineral or working interest, or to a voluntary pooling agreement or a compulsory pooling order heretofore entered by the division.</p> <p><i>Sorina L Flores</i> 11/21/13 Signature Date</p> <p>Sorina L. Flores Printed Name</p> <p>Sorina.Flores@apachecorp.com E-mail Address</p>
		<p>SURVEYOR CERTIFICATION</p> <p>I hereby certify that the well location shown on this plat was plotted from field notes of actual surveys made by me or under my supervision, and that the same is true and correct to the best of my belief.</p> <p>APRIL 17, 2013</p>
		<p>Date of Survey</p> <p>Signature & Seal of Professional Surveyor:</p> <p> 3239</p> <p><i>Ronald J. Eidson</i> 05/07/2013</p> <p>Certificate Number: 12641 ECS: Ronald J. Eidson 3239</p> <p>DSS JWSC W.O.: 13.11.0381</p>

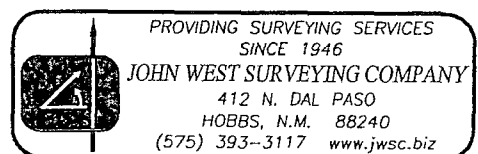
pm.

MAY 12 2015

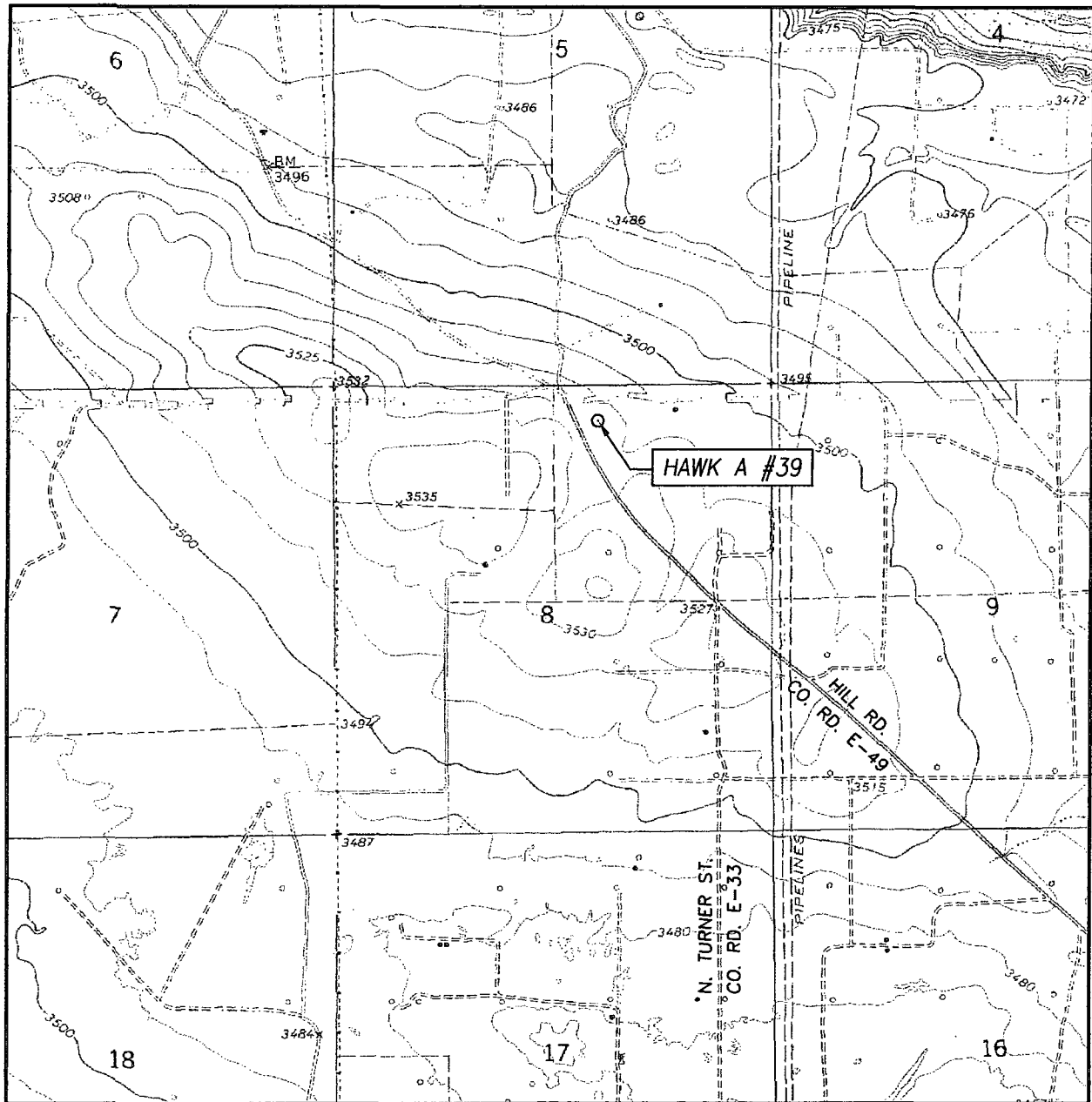
NORTH



LEASE _____ HAWK A



LOCATION VERIFICATION MAP



SCALE: 1" = 2000'

CONTOUR INTERVAL:
EUNICE, N.M. - 10'
HOBBS SW, N.M. - 5'

SEC. 8 TWP. 21-S RGE. 37-E

SURVEY N.M.P.M.

COUNTY LEA STATE NEW MEXICO

DESCRIPTION 415' FNL & 2075' FEL

ELEVATION 3513'

OPERATOR APACHE CORPORATION

LEASE HAWK A

U.S.G.S. TOPOGRAPHIC MAP
EUNICE, N.M.

