

HOBBS OCD

MAY 26 2015

Form C-102

Revised August 1, 2011

District I
1625 N. French Dr., Hobbs, NM 88240
Phone: (575) 393-6161 Fax: (575) 393-0720

District II
811 S. First St., Artesia, NM 88210
Phone: (575) 745-1283 Fax: (575) 748-0720

District III
1000 Rio Brazos Road, Aztec, NM 87410
Phone: (505) 334-6178 Fax: (505) 334-6170

District IV
1220 S. St. Francis Dr., Santa Fe, NM 87505
Phone: (505) 476-3460 Fax: (505) 476-3462

State of New Mexico
Energy, Minerals & Natural Resources Department

OIL CONSERVATION DIVISION

1220 South St. Francis Dr.

Santa Fe, NM 87505

RECEIVED

Submit one copy to appropriate

District Office

☐ AMENDED REPORT

WELL LOCATION AND ACREAGE DEDICATION PLAT

¹ API Number 70-025-42490	² Pool Code 49460	³ Pool Name Paduca; Delaware, NORTH
⁴ Property Code 300635	⁵ Property Name COTTON DRAW UNIT	⁶ Well Number 251H
⁷ OGRID No. 6137	⁸ Operator Name DEVON ENERGY PRODUCTION COMPANY, L.P.	⁹ Elevation 3441.6

¹⁰ Surface Location

UL or lot no.	Section	Township	Range	Lot Idn	Feet from the	North/South line	Feet from the	East/West line	County
C	7	25 S	32 E		125	NORTH	1650	WEST	LEA

¹¹ Bottom Hole Location If Different From Surface

UL or lot no.	Section	Township	Range	Lot Idn	Feet from the	North/South line	Feet from the	East/West line	County
N	7	25 S	32 E		330	SOUTH	1980	WEST	LEA

¹² Dedicated Acres	¹³ Joint or Infill	¹⁴ Consolidation Code	¹⁵ Order No.
160 ac			

No allowable will be assigned to this completion until all interests have been consolidated or a non-standard unit has been approved by the division.

<p>N89°42'07"E 2662.90 FT</p> <p>1650'</p> <p>LOT 1 SURFACE LOCATION</p> <p>NW CORNER SEC. 7 LAT. = 32.1520816°N LONG. = 103.7229769°W</p> <p>NMSP EAST (FT) N = 419598.07 E = 730229.30</p>		<p>N89°35'57"E 2660.68 FT</p> <p>N/4 CORNER SEC. 7 LAT. = 32.1520779°N LONG. = 103.7143746°W</p> <p>NMSP EAST (FT) N = 419611.92 E = 732891.58</p>		<p>NE CORNER SEC. 7 LAT. = 32.1520668°N LONG. = 103.7057795°W</p> <p>NMSP EAST (FT) N = 419630.53 E = 735551.61</p>	
<p>NOTE: LATITUDE AND LONGITUDE COORDINATES ARE SHOWN USING THE NORTH AMERICAN DATUM OF 1983 (NAD83). LISTED NEW MEXICO STATE PLANE EAST COORDINATES ARE GRID (NAD83). BASIS OF BEARING AND DISTANCES USED ARE NEW MEXICO STATE PLANE EAST COORDINATES MODIFIED TO THE SURFACE.</p>		<p>COTTON DRAW UNIT 251H ELEV. = 3441.6' LAT. = 32.1517359°N (NAD83) LONG. = 103.7176476°W</p> <p>NMSP EAST (FT) N = 419481.68 E = 731879.34</p>			
<p>LOT 2</p> <p>W/4 CORNER SEC. 7 LAT. = 32.1448285°N LONG. = 103.7229921°W</p> <p>NMSP EAST (FT) N = 418959.45 E = 730239.54</p>		<p>E/4 CORNER SEC. 7 LAT. = 32.1447996°N LONG. = 103.7058075°W</p> <p>NMSP EAST (FT) N = 418979.52 E = 735558.39</p>		<p>SE CORNER SEC. 7 LAT. = 32.1375763°N LONG. = 103.7058302°W</p> <p>NMSP EAST (FT) N = 414351.76 E = 735566.68</p>	
<p>LOT 3</p> <p>SW CORNER SEC. 7 LAT. = 32.1375733°N LONG. = 103.7230046°W</p> <p>NMSP EAST (FT) N = 414320.09 E = 730250.66</p>		<p>NOTE: LATITUDE AND LONGITUDE COORDINATES ARE SHOWN USING THE NORTH AMERICAN DATUM OF 1983 (NAD83). LISTED NEW MEXICO STATE PLANE EAST COORDINATES ARE GRID (NAD83). BASIS OF BEARING AND DISTANCES USED ARE NEW MEXICO STATE PLANE EAST COORDINATES MODIFIED TO THE SURFACE.</p>			
<p>LOT 4</p> <p>S/4 CORNER SEC. 7 LAT. = 32.1375733°N LONG. = 103.7230046°W</p> <p>NMSP EAST (FT) N = 414320.09 E = 730250.66</p>		<p>SE CORNER SEC. 7 LAT. = 32.1375763°N LONG. = 103.7058302°W</p> <p>NMSP EAST (FT) N = 414351.76 E = 735566.68</p>			

¹⁷ OPERATOR CERTIFICATION

I hereby certify that the information contained herein is true and complete to the best of my knowledge and belief, and that this organization either owns a working interest or unleased mineral interest in the land including the proposed bottom hole location or has a right to drill this well at this location pursuant to a contract with an owner of such a mineral or working interest, or to a voluntary pooling agreement or a compulsory pooling order heretofore entered by the division.

Trina C. Couch 12/11/14
Signature Date

Trina C. Couch, Regulatory Analyst

Printed Name

trina.couch@dmv.com

E-mail Address

¹⁸ SURVEYOR CERTIFICATION

I hereby certify that the well location shown on this plat was plotted from field notes of actual surveys made by me or under my supervision, and that the same is true and correct to the best of my belief.

NOVEMBER 5, 2014

Date of Survey

Signature and Seal of Professional Surveyor

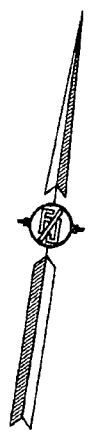
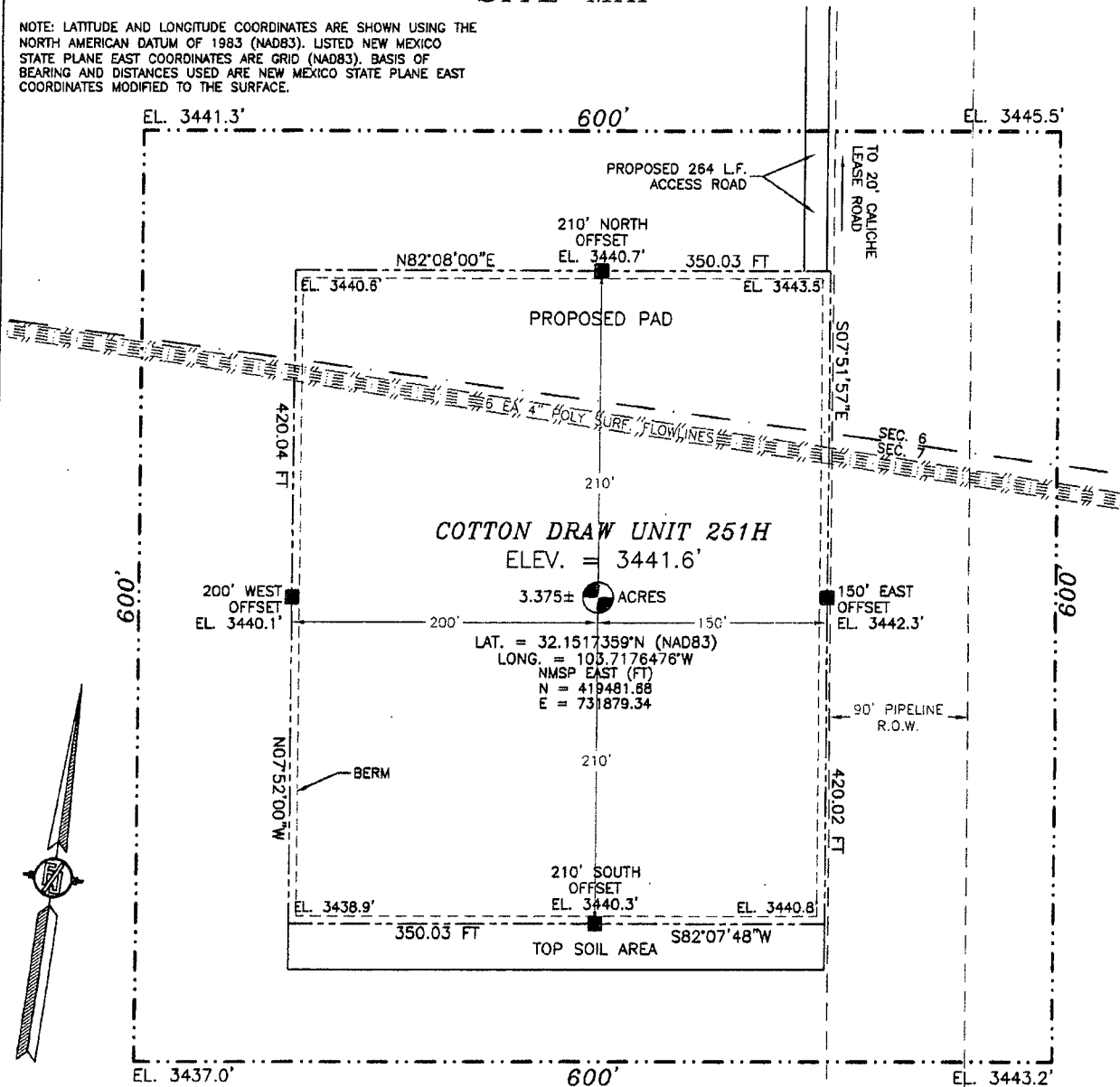
Certificate Number: PHILIPPE JARAMILLO, PLS 12797

SURVEY NO. 2969A

MAY 26 2015

SECTION 7, TOWNSHIP 25 SOUTH, RANGE 32 EAST, N.M.P.M.
LEA COUNTY, STATE OF NEW MEXICO
SITE MAP

NOTE: LATITUDE AND LONGITUDE COORDINATES ARE SHOWN USING THE NORTH AMERICAN DATUM OF 1983 (NAD83). LISTED NEW MEXICO STATE PLANE EAST COORDINATES ARE GRID (NAD83). BASIS OF BEARING AND DISTANCES USED ARE NEW MEXICO STATE PLANE EAST COORDINATES MODIFIED TO THE SURFACE.



010 50 100 200

SCALE 1" = 100'

DIRECTIONS TO LOCATION

FROM THE INTERSECTION OF ORLA ROAD, CR 1 AND MONSANTO ROAD GO WEST ON MONSANTO ROAD APPROX. 2.1 MILES, TURN RIGHT AT ROAD INTERSECTION GO NORTH APPROX. 0.9 MILES ROAD TURNS LEFT GO WEST APPROX. 2.0 MILES TURN RIGHT AT ROAD INTERSECTION GO NORTH APPROX. 1.3 MILES TO CALICHE LEASE ROAD ON RIGHT GO EAST 1.32 MILES TO A ROAD SURVEY ON LEFT (SOUTH) FOLLOW FLAGS SOUTH 264' TO THE PROPOSED NORTHEAST PAD CORNER FOR THIS LOCATION

DEVON ENERGY PRODUCTION COMPANY, L.P.
COTTON DRAW UNIT 251H

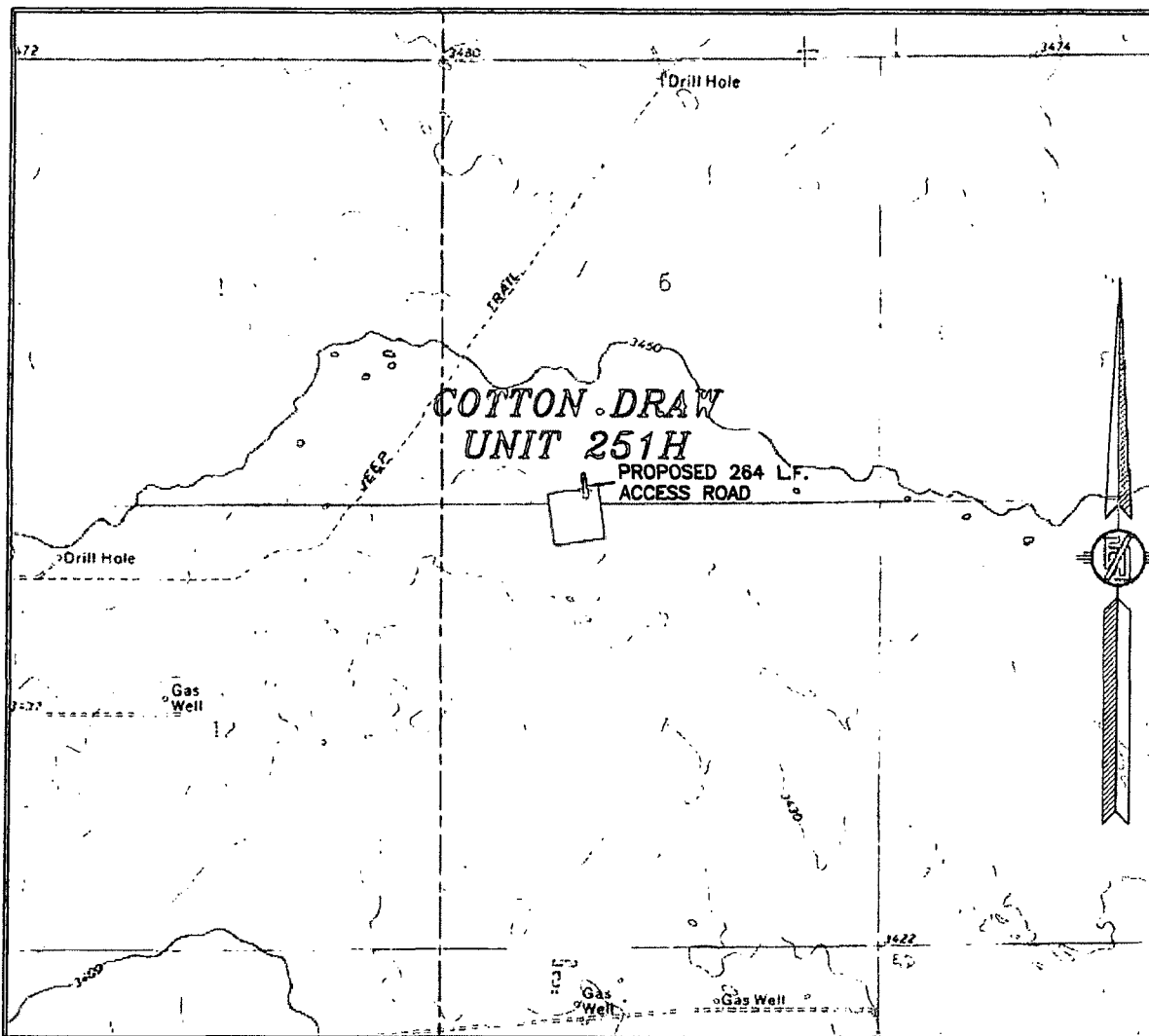
LOCATED 125 FT. FROM THE NORTH LINE
AND 1650 FT. FROM THE WEST LINE OF
SECTION 7, TOWNSHIP 25 SOUTH,
RANGE 32 EAST, N.M.P.M.
LEA COUNTY, STATE OF NEW MEXICO

NOVEMBER 15, 2014

SURVEY NO. 2969A

MADRON SURVEYING, INC. 301 SOUTH CANAL (575) 234-3341 CARLSBAD, NEW MEXICO

SECTION 7, TOWNSHIP 25 SOUTH, RANGE 32 EAST, N.M.P.M.
LEA COUNTY, STATE OF NEW MEXICO
LOCATION VERIFICATION MAP



USGS QUAD MAP:
PADUCA BREAKS NW

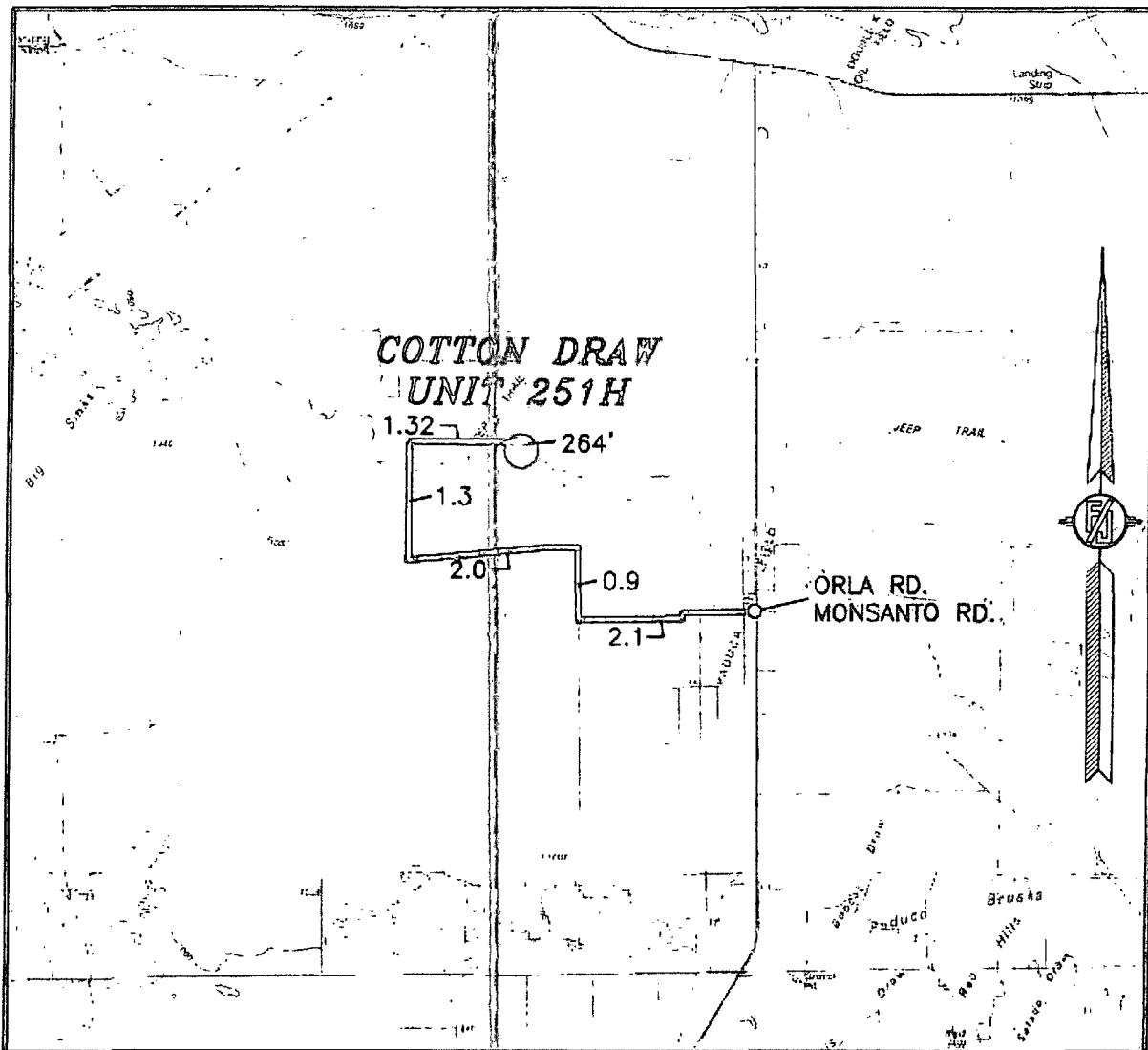
NOT TO SCALE

DEVON ENERGY PRODUCTION COMPANY, L.P.
COTTON DRAW UNIT 251H
LOCATED 125 FT. FROM THE NORTH LINE
AND 1650 FT. FROM THE WEST LINE OF
SECTION 7, TOWNSHIP 25 SOUTH,
RANGE 32 EAST, N.M.P.M.
LEA COUNTY, STATE OF NEW MEXICO

NOVEMBER 15, 2014

MADRON SURVEYING, INC. 301 SOUTH CANAL (575) 234-3341 **CARLSBAD, NEW MEXICO** SURVEY NO. 2969A

SECTION 7, TOWNSHIP 25 SOUTH, RANGE 32 EAST, N.M.P.M.
LEA COUNTY, STATE OF NEW MEXICO
VICINITY MAP



DISTANCES IN MILES

NOT TO SCALE

DIRECTIONS TO LOCATION

FROM THE INTERSECTION OF ORLA ROAD, CR 1 AND MONSANTO ROAD
GO WEST ON MONSANTO ROAD APPROX. 2.1 MILES. TURN RIGHT AT
ROAD INTERSECTION GO NORTH APPROX. 0.9 MILES ROAD TURNS LEFT
GO WEST APPROX. 2.0 MILES TURN RIGHT AT ROAD INTERSECTION GO
NORTH APPROX. 1.3 MILES TO CALICHE LEASE ROAD ON RIGHT GO
EAST 1.32 MILES TO A ROAD SURVEY ON LEFT (SOUTH) FOLLOW
FLAGS SOUTH 284' TO THE PROPOSED NORTHEAST PAD CORNER FOR
THIS LOCATION

DEVON ENERGY PRODUCTION COMPANY, L.P.
COTTON DRAW UNIT 251H

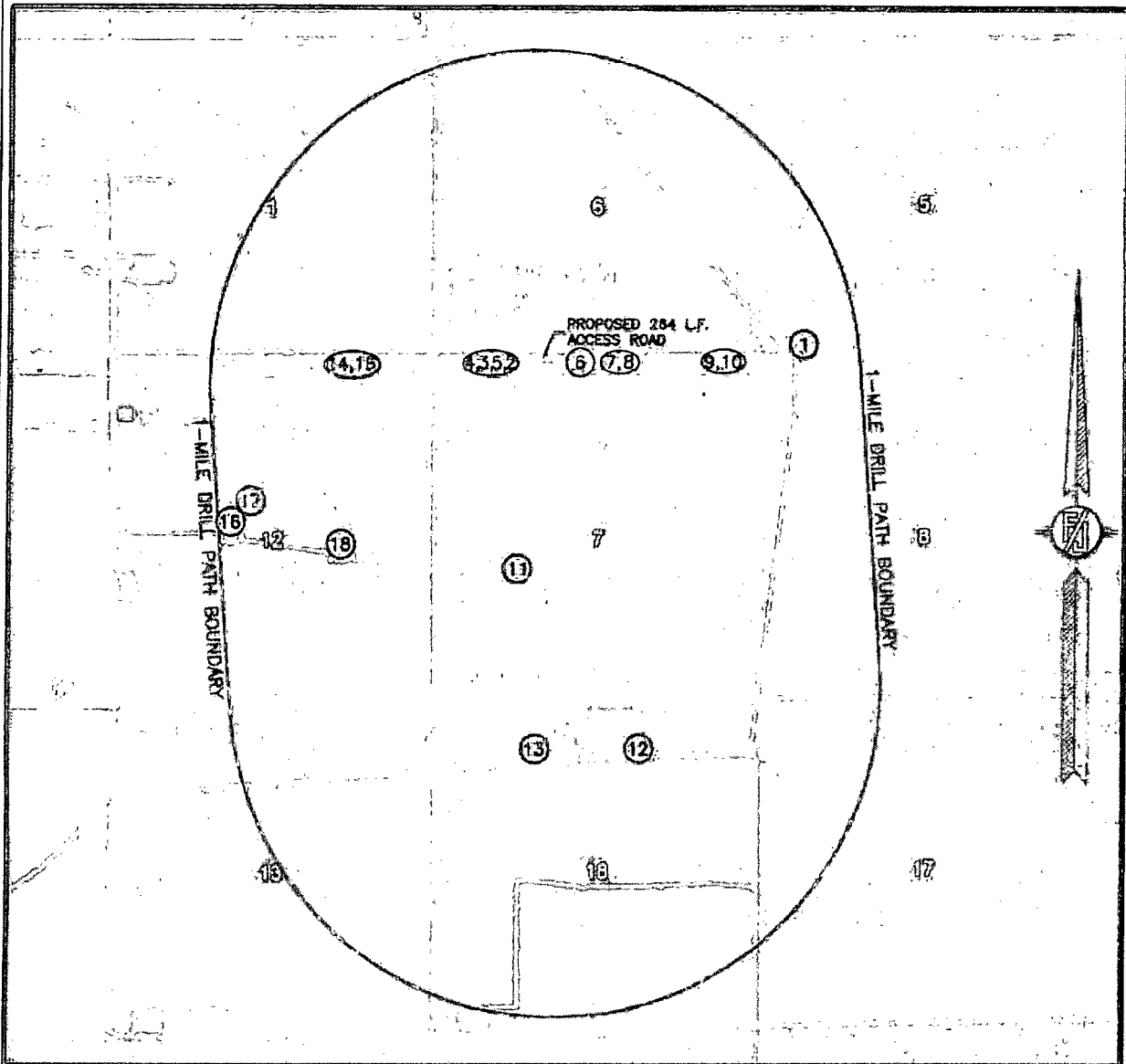
LOCATED 125 FT. FROM THE NORTH LINE
AND 1650 FT. FROM THE WEST LINE OF
SECTION 7, TOWNSHIP 25 SOUTH,
RANGE 32 EAST, N.M.P.M.
LEA COUNTY, STATE OF NEW MEXICO

NOVEMBER 15, 2014

SURVEY NO. 2969A

MADRON SURVEYING, INC. 301 SOUTH CANAL (575) 234-3341 CARLSBAD, NEW MEXICO

SECTION 7, TOWNSHIP 25 SOUTH, RANGE 32 EAST, N.M.P.M.
LEA COUNTY, STATE OF NEW MEXICO
AERIAL PHOTO



NOT TO SCALE
AERIAL PHOTO:
GOOGLE EARTH
FEB. 2014

DEVON ENERGY PRODUCTION COMPANY, L.P.
COTTON DRAW UNIT 251H

LOCATED 125 FT. FROM THE NORTH LINE
AND 1650 FT. FROM THE WEST LINE OF
SECTION 7, TOWNSHIP 25 SOUTH,
RANGE 32 EAST, N.M.P.M.
LEA COUNTY, STATE OF NEW MEXICO

NOVEMBER 15, 2014

SURVEY NO. 2969A

MADRON SURVEYING, INC. 501 SOUTH CANAL (575) 234-3341 CARLSBAD, NEW MEXICO

SECTION 7, TOWNSHIP 25 SOUTH, RANGE 32 EAST, N.M.P.M.
LEA COUNTY, STATE OF NEW MEXICO
WELLS WITHIN 1-MILE DRILL PATH BOUNDARY

API	Well	Type	Status	ULSTR	Current Operator
1 30-025-35390	SPENCER 5 FEDERAL #001	Oil	Plugged	M-05-25S-32E	[20077] SAHARA OPERATING CO
2 30-025-39984	TRIONYX 6 FEDERAL #003H	Oil	New	7-06-25S-32E	[6137] DEVON ENERGY PRODUCTION COMPANY, LP
3 30-025-40105	TRIONYX 6 FEDERAL #003Y	Oil	Active	7-06-25S-32E	[6137] DEVON ENERGY PRODUCTION COMPANY, LP
4 30-025-39948	TRIONYX 6 FEDERAL #001	Oil	Active	7-06-25S-32E	[6137] DEVON ENERGY PRODUCTION COMPANY, LP
5 30-025-39949	TRIONYX 6 FEDERAL #002	Oil	Active	7-06-25S-32E	[6137] DEVON ENERGY PRODUCTION COMPANY, LP
6 30-025-40044	TRIONYX 6 FEDERAL #004H	Oil	Active	N-06-25S-32E	[6137] DEVON ENERGY PRODUCTION COMPANY, LP
7 30-025-40045	TRIONYX 6 FEDERAL #005H	Oil	Active	O-06-25S-32E	[6137] DEVON ENERGY PRODUCTION COMPANY, LP
8 30-025-40046	TRIONYX 6 FEDERAL #006H	Oil	Active	O-06-25S-32E	[6137] DEVON ENERGY PRODUCTION COMPANY, LP
9 30-025-40047	TRIONYX 6 FEDERAL #007H	Oil	Active	P-06-25S-32E	[6137] DEVON ENERGY PRODUCTION COMPANY, LP
10 30-025-40048	TRIONYX 6 FEDERAL #008H	Oil	Active	P-06-25S-32E	[6137] DEVON ENERGY PRODUCTION COMPANY, LP
11 30-025-35086	TEXACO COTTON DRAW UNIT #088	Gas	Plugged	K-07-25S-32E	[6137] DEVON ENERGY PRODUCTION COMPANY, LP
12 30-025-08200	PRE-ONGARD WELL #001	Oil	Plugged	B-18-25S-32E	[214263] PRE-ONGARD WELL OPERATOR
13 30-025-21728	COTTON DRAW UNIT #064	Gas	Plugged	C-18-25S-32E	[22351] TEXACO EXPLORATION & PRODUCTION INC
14 30-015-42426	COTTON DRAW UNIT #172H	Oil	New	O-01-25S-31E	[6137] DEVON ENERGY PRODUCTION COMPANY, LP
15 30-015-42515	COTTON DRAW UNIT #173H	Oil	New	P-01-25S-31E	[6137] DEVON ENERGY PRODUCTION COMPANY, LP
16 30-015-20272	COTTON DRAW #068	Gas	Active	F-12-25S-31E	[6137] DEVON ENERGY PRODUCTION COMPANY, LP
17 30-015-20270	PRE-ONGARD WELL #068	Oil	Plugged	F-12-25S-31E	[214263] PRE-ONGARD WELL OPERATOR
18 30-015-29850	COTTON DRAW UNIT #086	Gas	Active	J-12-25S-31E	[6137] DEVON ENERGY PRODUCTION COMPANY, LP

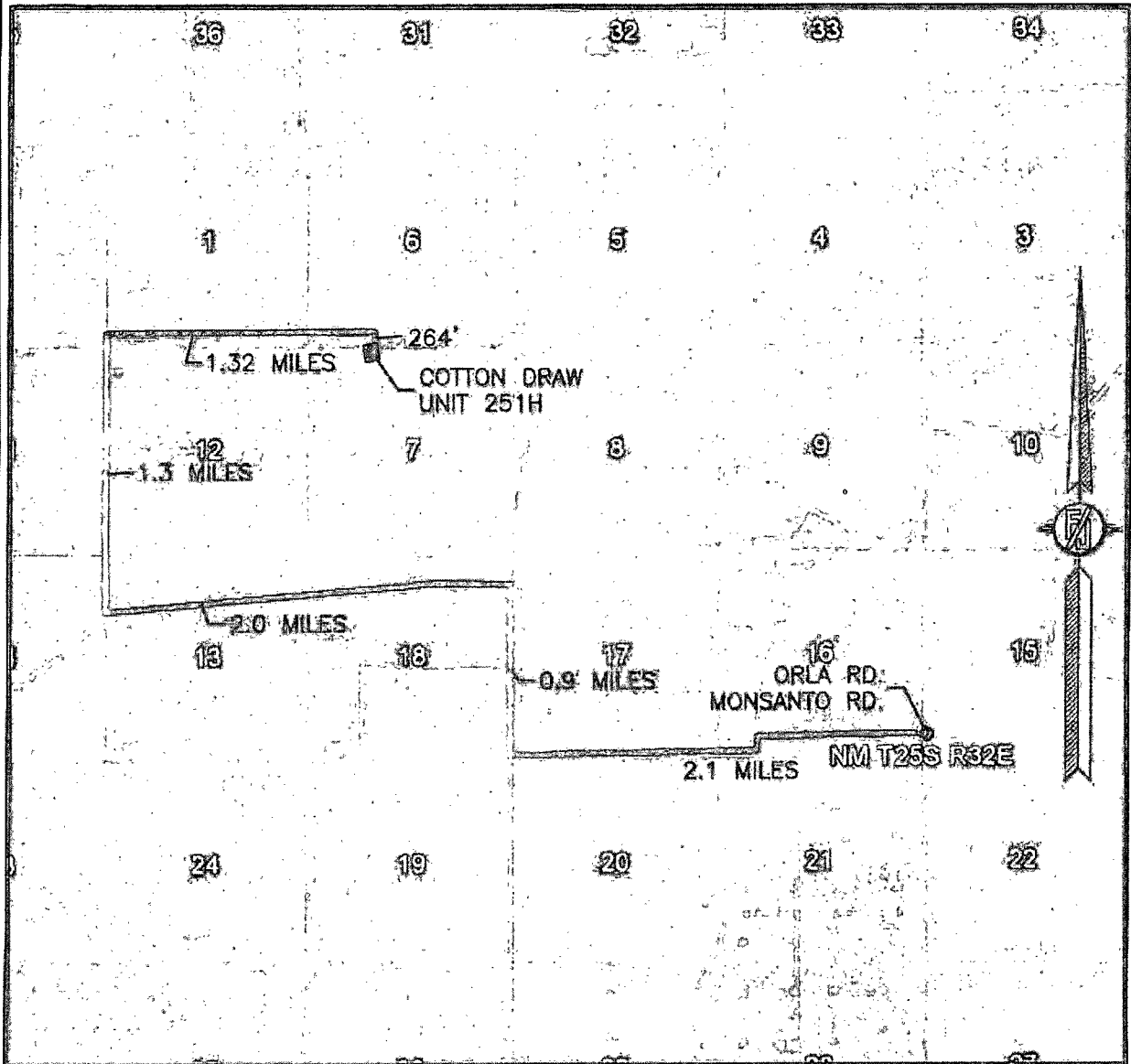
DEVON ENERGY PRODUCTION COMPANY, L.P.
COTTON DRAW UNIT 251H
LOCATED 125 FT. FROM THE NORTH LINE
AND 1650 FT. FROM THE WEST LINE OF
SECTION 7, TOWNSHIP 25 SOUTH,
RANGE 32 EAST, N.M.P.M.
LEA COUNTY, STATE OF NEW MEXICO

NOVEMBER 15, 2014

SURVEY NO. 2969A

MADRON SURVEYING, INC. 301 SOUTH CANAL (575) 234-3341 CARLSBAD, NEW MEXICO

SECTION 7, TOWNSHIP 25 SOUTH, RANGE 32 EAST, N.M.P.M.
LEA COUNTY, STATE OF NEW MEXICO
AERIAL ACCESS ROUTE MAP



NOT TO SCALE
AERIAL PHOTO:
GOOGLE EARTH
FEB. 2014

DEVON ENERGY PRODUCTION COMPANY, L.P.
COTTON DRAW UNIT 251H

LOCATED 125 FT. FROM THE NORTH LINE
AND 1650 FT. FROM THE WEST LINE OF
SECTION 7, TOWNSHIP 25 SOUTH,
RANGE 32 EAST, N.M.P.M.
LEA COUNTY, STATE OF NEW MEXICO

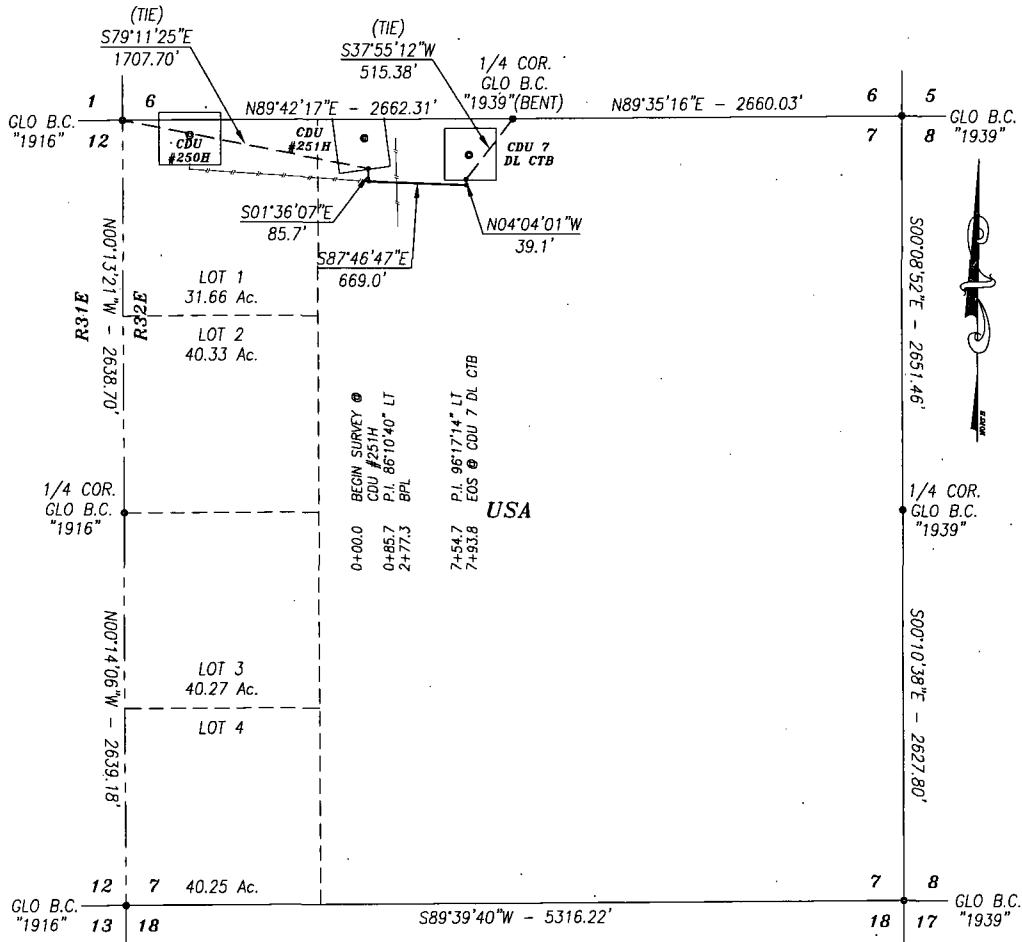
NOVEMBER 15, 2014

SURVEY NO. 2969A

MADRON SURVEYING, INC. 301 SOUTH CANAL CARLSBAD, NEW MEXICO
(575) 234-3341

**CDU #251H FLOWLINE
DEVON ENERGY PRODUCTION CO. LP.**

A 4" BURIED POLY FLOWLINE FROM THE CDU #251H TO THE CDU 7 DL CTB IN
SECTION 7, TOWNSHIP 25 SOUTH RANGE 32 EAST, N.M.P.M.,
LEA COUNTY, NEW MEXICO.



DESCRIPTION

A STRIP OF LAND 30.0 FEET WIDE AND 793.8 FEET OR 48.11 RODS OR 0.150 MILES IN LENGTH CROSSING
USA LAND IN SECTION 7, TOWNSHIP 25 SOUTH, RANGE 32 EAST, LEA COUNTY, NEW MEXICO AND BEING
15.0 FEET LEFT AND 15.0 FEET RIGHT OF THE ABOVE PLATTED CENTERLINE SURVEY.

BASIS OF BEARING:

BEARINGS SHOWN HEREON ARE MERCATOR GRID AND CONFORM TO
THE NEW MEXICO COORDINATE SYSTEM "NEW MEXICO EAST ZONE"
NORTH AMERICAN DATUM 1983. DISTANCES ARE GRID VALUES.

HARCROW SURVEYING, LLC

2314 W. MAIN ST, ARTESIA, N.M. 88210
PH: (575) 746-2158 FAX: (575) 746-2158
c.harcrow@harcrowsurveying.com



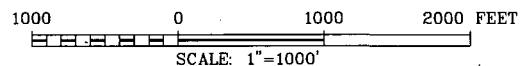
CERTIFICATION

I, CHAD HARCROW, A NEW MEXICO REGISTERED PROFESSIONAL SURVEYOR
CERTIFY THAT I DIRECTED AND AM RESPONSIBLE FOR THIS SURVEY, THAT
THIS SURVEY IS TRUE AND CORRECT TO THE BEST OF MY KNOWLEDGE
AND BELIEF, AND THIS SURVEY AND PLAT MEET THE MINIMUM STANDARDS
FOR SURVEYING IN NEW MEXICO.



Chad Harcrow
CHAD HARCROW N.M.P.S. NO. 17777

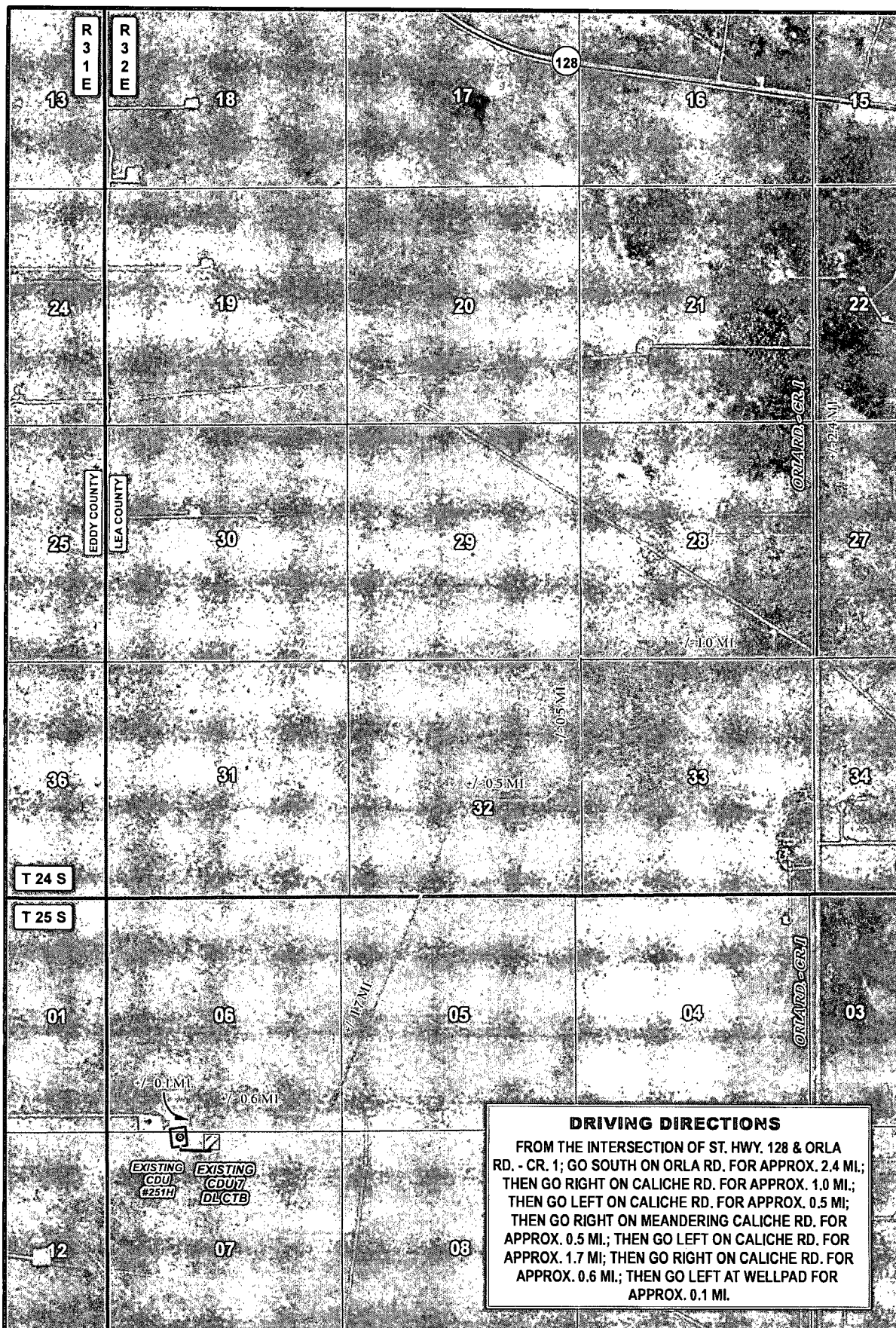
3/17/15
DATE



DEVON ENERGY PRODUCTION CO. LP.

SURVEY OF A PROPOSED FLOWLINE LOCATED IN
SECTION 7, TOWNSHIP 25 SOUTH, RANGE 32 EAST,
LEA COUNTY, NMPM, NEW MEXICO

SURVEY DATE: MARCH 7, 2015	LINE 2
DRAFTING DATE: MARCH 17, 2015	PAGE 1 OF 4
APPROVED BY: CH	DRAWN BY: SP
	FILE: 15-214



DRIVING DIRECTIONS

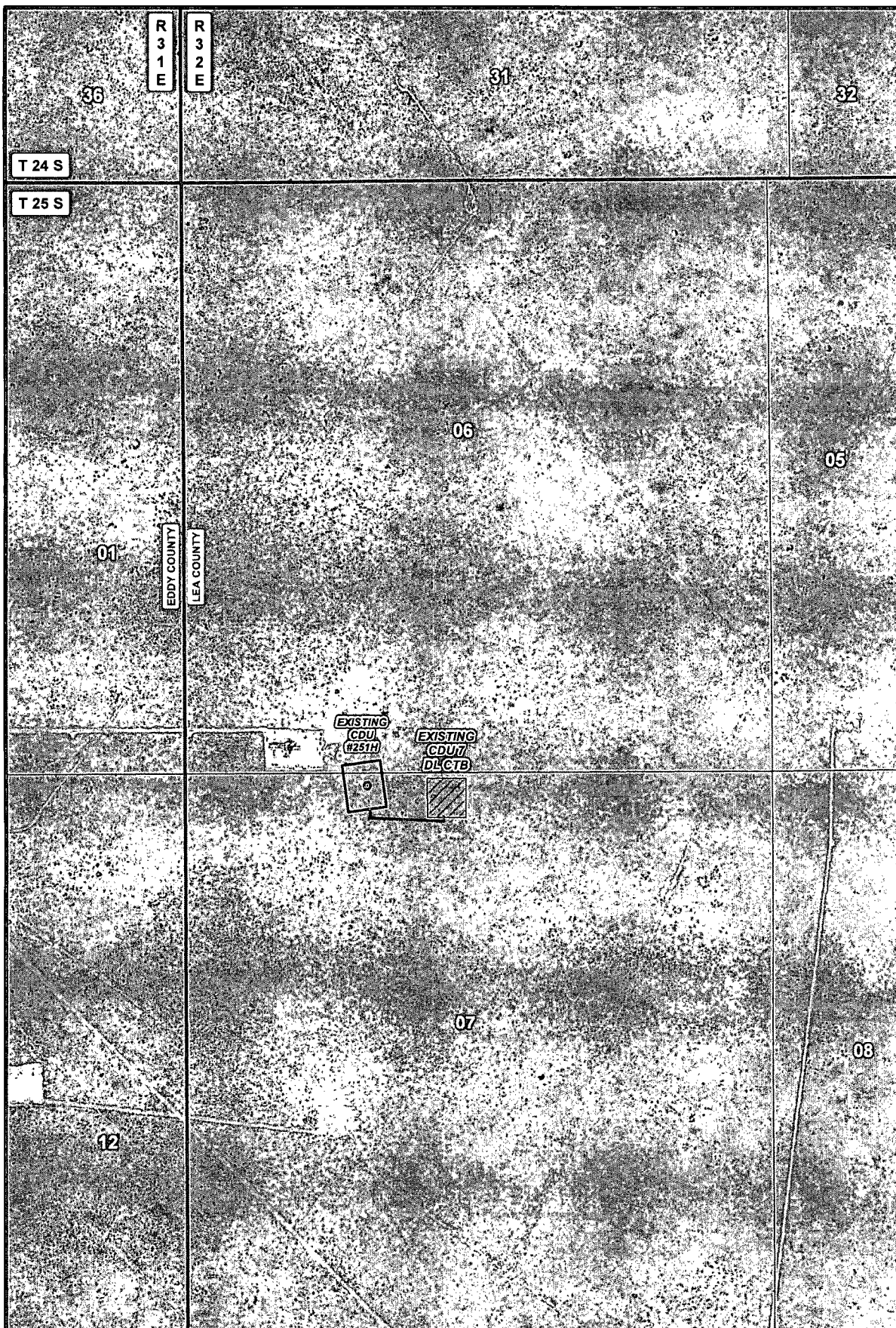
FROM THE INTERSECTION OF ST. HWY. 128 & ORLA RD. - CR. 1; GO SOUTH ON ORLA RD. FOR APPROX. 2.4 MI.; THEN GO RIGHT ON CALICHE RD. FOR APPROX. 1.0 MI.; THEN GO LEFT ON CALICHE RD. FOR APPROX. 0.5 MI.; THEN GO RIGHT ON MEANDERING CALICHE RD. FOR APPROX. 0.5 MI.; THEN GO LEFT ON CALICHE RD. FOR APPROX. 1.7 MI.; THEN GO RIGHT ON CALICHE RD. FOR APPROX. 0.6 MI.; THEN GO LEFT AT WELLPAD FOR APPROX. 0.1 MI.

LEGEND PIPELINE WELL WELLPAD TANK BATTERY	CDU #251H FLOWLINE		
	SECTION: 7 TOWNSHIP: 25 S. RANGE: 32 E.		
	STATE: NEW MEXICO COUNTY: LEA SURVEY: N.M.P.M.		
	W.O. # 15-214 LEASE: COTTON DRAW UNIT		
	DRIVING DIRECTIONS IMAGERY SP:		

ENERGY PRODUCTION CO. L.P.

HARCROW SURVEYING, LLC.
 2314 W. MAIN ST. ARTESIA, NM 88210
 PH: (575) 746-2158 FAX: (575) 746-2158
 c.harcrow@harcrowsurveying.com

ORIG: 03/17/2015
PAGE: 2 OF 4



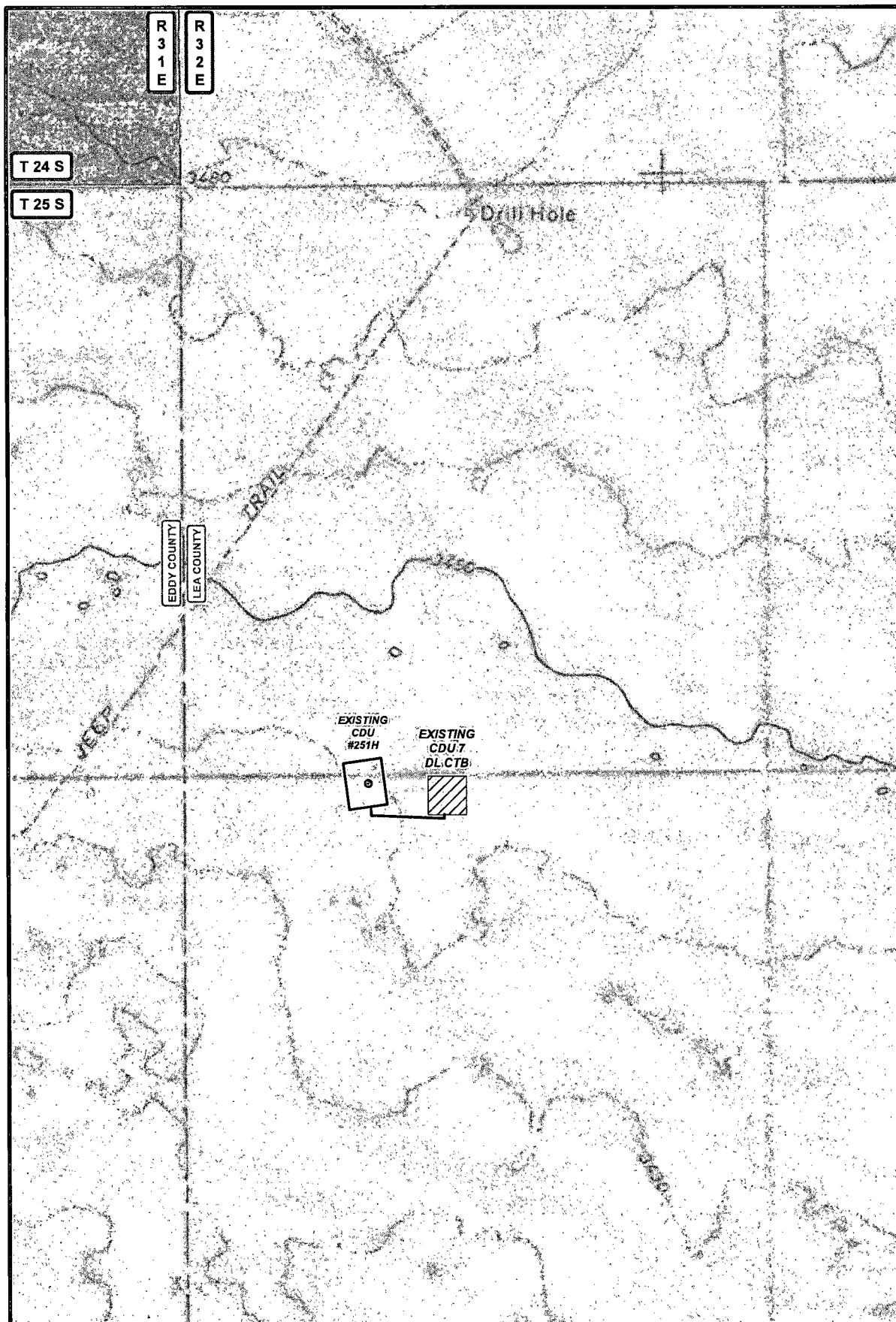
LEGEND PIPELINE WELL WELLPAD TANK BATTERY	CDU #251H FLOWLINE		
	SECTION: 7 TOWNSHIP: 25 S. RANGE: 32 E.		
	STATE: NEW MEXICO COUNTY: LEA SURVEY: N.M.P.M		
	W.O. # 15-214 LEASE: COTTON DRAW UNIT		
	<div style="display: flex; justify-content: space-between;"> <div> <p>0 0.05 0.1 0.2 Miles</p> </div> <div> <p>0 2,500 FEET</p> </div> <div> <p>1 IN = 1,000 FT</p> </div> </div>		
<div style="display: flex; justify-content: space-between;"> <div>PIPELINE OVERVIEW</div> <div>IMAGERY</div> <div>SP</div> </div>			

devon
 ENERGY PRODUCTION CO. L.P.

HARCROW SURVEYING, LLC.
2314 W. MAIN ST. ARTESIA, NM 88210
 PH: (575) 746-2158 FAX: (575) 746-2158
 c.harcrow@harcrowsurveying.com

ORIG: 03/17/2015

PAGE: 3 OF 4



LEGEND PIPELINE WELL WELLPAD TANK BATTERY PRIVATE STATE OF NM US BLM	CDU #251H FLOWLINE			 devon ENERGY PRODUCTION CO. L.P. HARCROW SURVEYING, LLC. 2314 W. MAIN ST, ARTESIA, NM 88210 PH: (575) 746-2158 FAX: (575) 746-2158 c.harcrow@harcrowsurveying.com
	SECTION: 7 TOWNSHIP: 25 S. RANGE: 32 E. STATE: NEW MEXICO COUNTY: LEA SURVEY: N.M.P.M			
	W.O. # 15-214 LEASE: COTTON DRAW UNIT			
	 0 0.05 0.1 0.2 Miles 1 IN = 1,000 FT			
	PIPELINE OVERVIEW LAND STATUS SP:			
ORIG: 03/17/2015 PAGE: 4 OF 4				

One Mile Radius Map

Estimated distance to nearest wellbores:

*From SHL: Trionyx 6 Fed 3HY 700 ft NW
Cotton Draw Unit 88 500 ft W
*From BHL: Cotton Draw Unit 64 1100 ft SW

