

Division I
1625 N. French Dr., Hobbs, NM 88240
Phone: (575) 393-6161 Fax: (575) 393-0720
Division II
811 S. First St., Artesia, NM 88210
Phone: (575) 748-1283 Fax: (575) 748-9720
Division III
1000 Rio Brazos Road, Aztec, NM 87410
Phone: (505) 334-6178 Fax: (505) 334-6170
Division IV
1220 S. St. Francis Dr., Santa Fe, NM 87505
Phone: (505) 476-3460 Fax: (505) 476-3462

State of New Mexico
Energy, Minerals & Natural Resources Department
OIL CONSERVATION DIVISION
1220 South St. Francis Dr.
Santa Fe, NM 87505

Form C-102
Revised August 1, 2011
Submit one copy to appropriate
District Office

☐ AMENDED REPORT

WELL LOCATION AND ACREAGE DEDICATION PLAT

1 API Number		2 Pool Code 41440		3 Pool Name Lusk; Bone Spring	
4 Property Code 313577		5 Property Name TAYLOR DRAW 7 FED COM			6 Well Number 2Y
7 OGRID No. 6137		8 Operator Name DEVON ENERGY PRODUCTION COMPANY, L.P.			9 Elevation 3612.1

10 Surface Location

UL or lot no. P	Section 7	Township 19 S	Range 32 E	Lot Idn	Feet from the 665	North/South line SOUTH	Feet from the 400	East/West line EAST	County LEA
--------------------	--------------	------------------	---------------	---------	----------------------	---------------------------	----------------------	------------------------	---------------

11 Bottom Hole Location If Different From Surface

UL or lot no. 4	Section 7	Township 19 S	Range 32 E	Lot Idn	Feet from the 400	North/South line SOUTH	Feet from the 290	East/West line WEST	County LEA
--------------------	--------------	------------------	---------------	---------	----------------------	---------------------------	----------------------	------------------------	---------------

12 Dedicated Acres 160.81	13 Joint or Infill	14 Consolidation Code	15 Order No.
------------------------------	--------------------	-----------------------	--------------

No allowable will be assigned to this completion until all interests have been consolidated or a non-standard unit has been approved by the division.

N89°53'16"E 2673.43 FT		N89°49'41"E 2643.33 FT	
NW CORNER SEC. 7 LAT. = 32.6822969°N LONG. = 103.8143075°W NMSP EAST (FT) N = 812341.34 E = 701027.38	N Q CORNER SEC. 7 LAT. = 32.6822750°N LONG. = 103.8058206°W NMSP EAST (FT) N = 812348.57 E = 705700.19	NE CORNER SEC. 7 LAT. = 32.6822604°N LONG. = 103.7970314°W NMSP EAST (FT) N = 812354.50 E = 706342.90	
NOTE: LATITUDE AND LONGITUDE COORDINATES ARE SHOWN USING THE NORTH AMERICAN DATUM OF 1983 (NAD83). LISTED NEW MEXICO STATE PLANE EAST COORDINATES ARE GRID (NAD83). BASIS OF BEARING AND DISTANCES USED ARE NEW MEXICO STATE PLANE EAST COORDINATES MODIFIED TO THE SURFACE.			
W Q CORNER SEC. 7 LAT. = 32.6750365°N LONG. = 103.8142876°W NMSP EAST (FT) N = 609899.93 E = 701046.45	E Q CORNER SEC. 7 LAT. = 32.6749969°N LONG. = 103.7970173°W NMSP EAST (FT) N = 609711.95 E = 706360.59		
BOTTOM OF HOLE LAT. = 32.6888780°N LONG. = 103.8133283°W NMSP EAST (FT) N = 807480.84 E = 701352.58		TAYLOR DRAW "7" FED COM 2Y ELEV. = 3612.1' LAT. = 32.6895677°N (NAD83) LONG. = 103.7983074°W NMSP EAST (FT) N = 807734.75 E = 705973.58	
SURFACE LOCATION SW CORNER SEC. 7 LAT. = 32.6877810°N LONG. = 103.8142675°W NMSP EAST (FT) N = 607060.31 E = 701065.55		SE CORNER SEC. 7 LAT. = 32.6877364°N LONG. = 103.7970047°W NMSP EAST (FT) N = 607070.52 E = 706377.83	
S Q CORNER SEC. 7 LAT. = 32.6877607°N LONG. = 103.8055900°W NMSP EAST (FT) N = 607066.11 E = 705735.87			

16 OPERATOR CERTIFICATION
I hereby certify that the information contained herein is true and complete to the best of my knowledge and belief, and that this organization either owns a working interest or undivided mineral interest in the land including the proposed bottom hole location or has a right to drill this well on this location pursuant to a contract with an owner of such a mineral or working interest, or to a voluntary pooling agreement or a compulsory pooling order heretofore entered by the division.

Trina C. Couch 7/17/15
Signature Date
Trina C. Couch, Regulatory Analyst
Printed Name
trina.couch@dmn.com
E-mail Address

17 SURVEYOR CERTIFICATION
I hereby certify that the well location shown on this plat was plotted from field notes of actual surveys made by me or under my supervision, and that the same is true and correct to the best of my belief.

WILLIAM F. JARAMILLO
Signature
JULY 17 2015
Date of Survey
12757
Certificate Number
WILLIAM F. JARAMILLO, PLS 12757
SURVEY NO. 25760

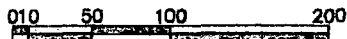
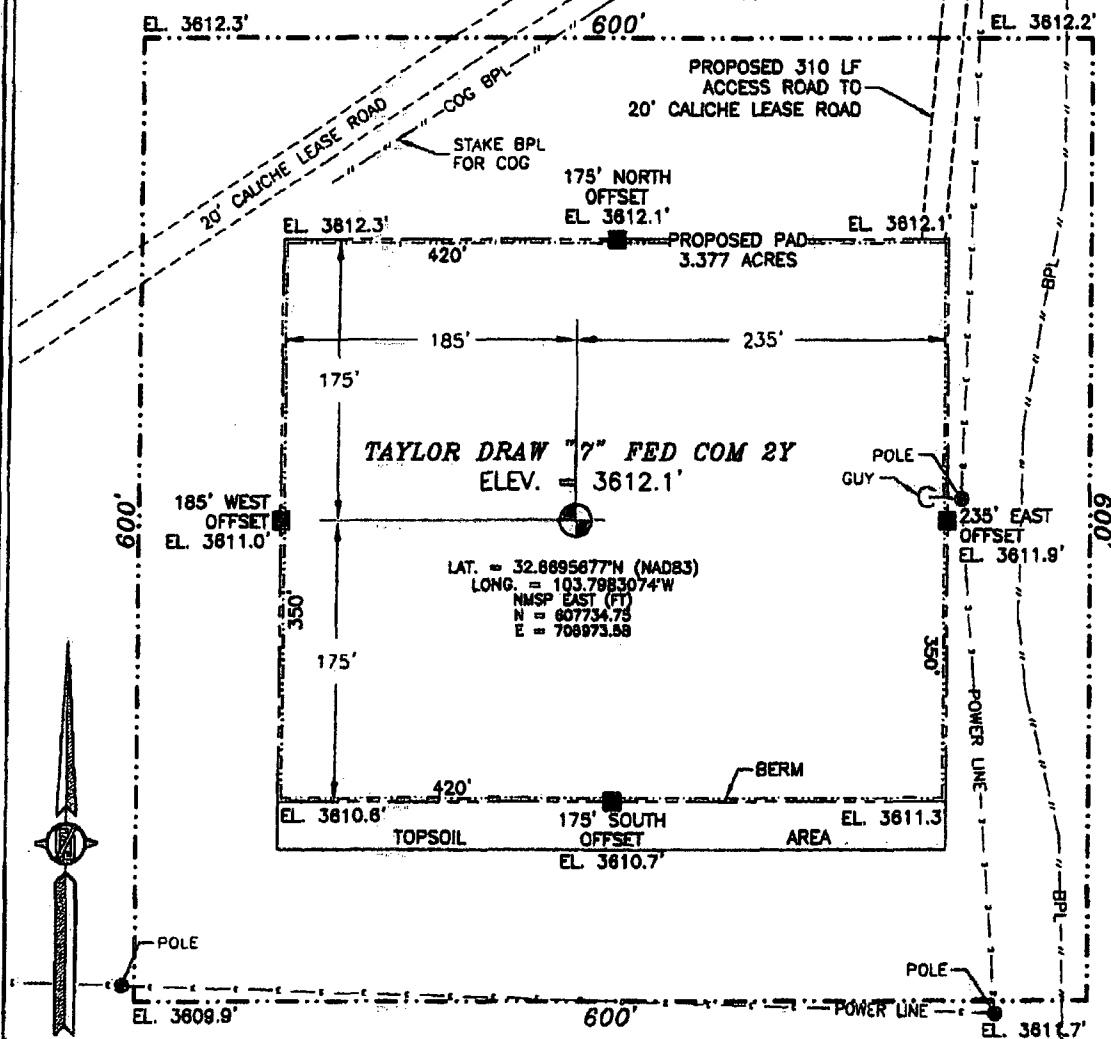
PR

JUL 21 2015

SECTION 7, TOWNSHIP 19 SOUTH, RANGE 32 EAST, N.M.P.M.
LEA COUNTY, STATE OF NEW MEXICO

SITE MAP

NOTE: LATITUDE AND LONGITUDE COORDINATES ARE SHOWN USING THE NORTH AMERICAN DATUM OF 1983 (NAD83). LISTED NEW MEXICO STATE PLANE EAST COORDINATES ARE GRID (NAD83). BASIS OF BEARING AND DISTANCES USED ARE NEW MEXICO STATE PLANE EAST COORDINATES ADJUSTED TO THE SURFACE



DIRECTIONS TO LOCATION

FROM THE INTERSECTION OF CR L126 (MALJAMAR ROAD) AND CR 248 (LUCK PLANT ROAD) GO NORTH ON CR L126 1.5 MILES, TURN LEFT ON CALICHE ROAD OVER CATTLE GUARD ABOUT 325' TO ROAD INTERSECTION ON LEFT (SOUTH). START PROPOSED ROAD, GO SOUTH 310' TO NORTHEAST CORNER OF PAD.

DEVON ENERGY PRODUCTION COMPANY, L.P.
TAYLOR DRAW "7" FED COM 2Y
LOCATED 665 FT. FROM THE SOUTH LINE
AND 400 FT. FROM THE EAST LINE OF
SECTION 7, TOWNSHIP 19 SOUTH,
RANGE 32 EAST, N.M.P.M.
LEA COUNTY, STATE OF NEW MEXICO

JULY 17, 2015

SURVEY NO. 2576D

MADRON SURVEYING, INC. 301 SOUTH CANAL (575) 234-3341 CARLSBAD, NEW MEXICO

SECTION 7, TOWNSHIP 19 SOUTH, RANGE 32 EAST, N.M.P.M.



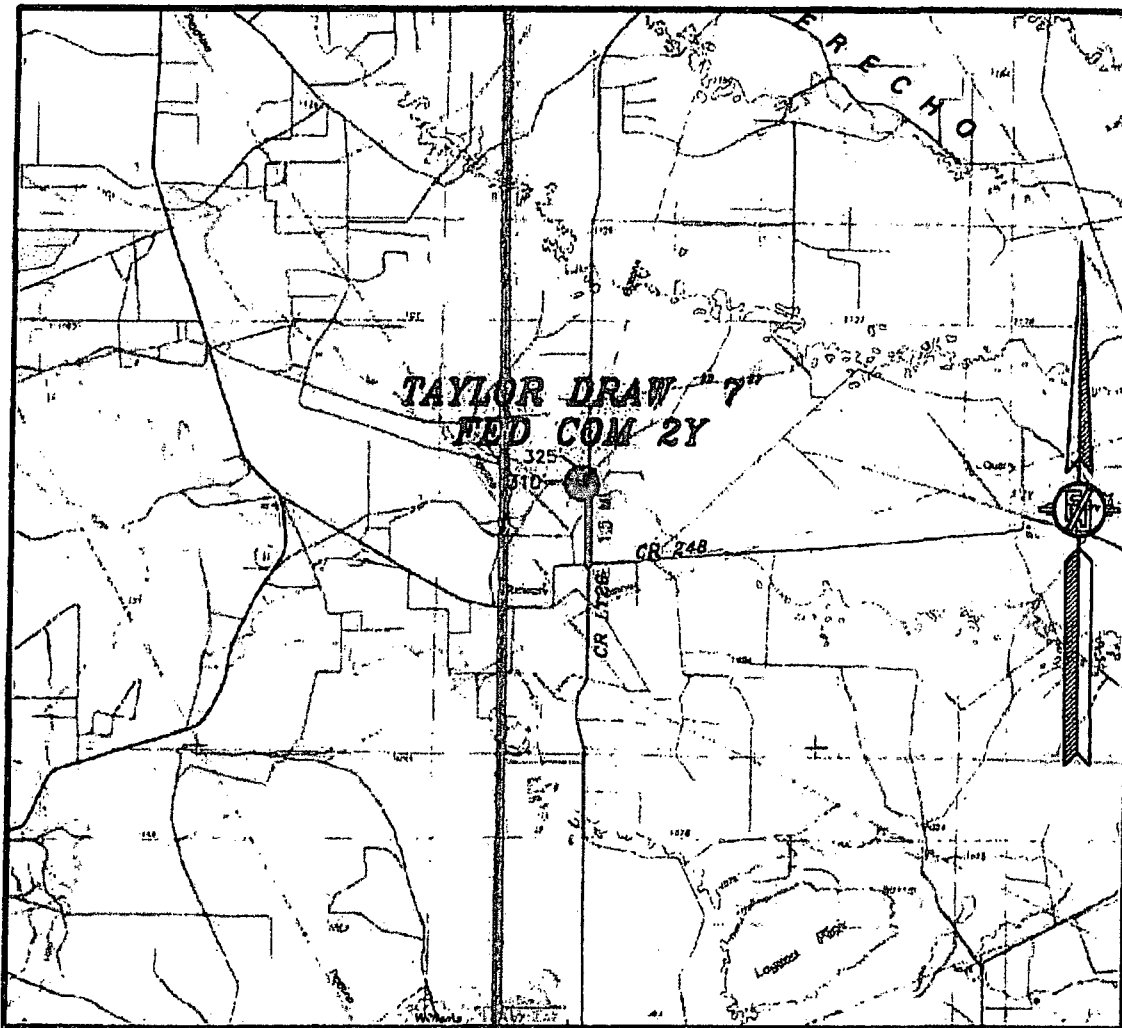
DEVON ENERGY PRODUCTION COMPANY, L.P.
TAYLOR DRAW "7" FED COM 2Y
LOCATED 665 FT. FROM THE SOUTH LINE
AND 400 FT. FROM THE EAST LINE OF
SECTION 7, TOWNSHIP 19 SOUTH,
RANGE 32 EAST, N.M.P.M.
LEA COUNTY, STATE OF NEW MEXICO

JULY 17, 2015

SURVEY NO. 2576D

MADRON SURVEYING, INC. 301 SOUTH CANAL, CARLSBAD, NEW MEXICO
(575) 234-3341

SECTION 7, TOWNSHIP 19 SOUTH, RANGE 32 EAST, N.M.P.M.
LEA COUNTY, STATE OF NEW MEXICO
VICINITY MAP



NOT TO SCALE

DEVON ENERGY PRODUCTION COMPANY, L.P.

TAYLOR DRAW "7" FED COM 2Y
LOCATED 665 FT. FROM THE SOUTH LINE
AND 400 FT. FROM THE EAST LINE OF
SECTION 7, TOWNSHIP 19 SOUTH,
RANGE 32 EAST, N.M.P.M.
LEA COUNTY, STATE OF NEW MEXICO

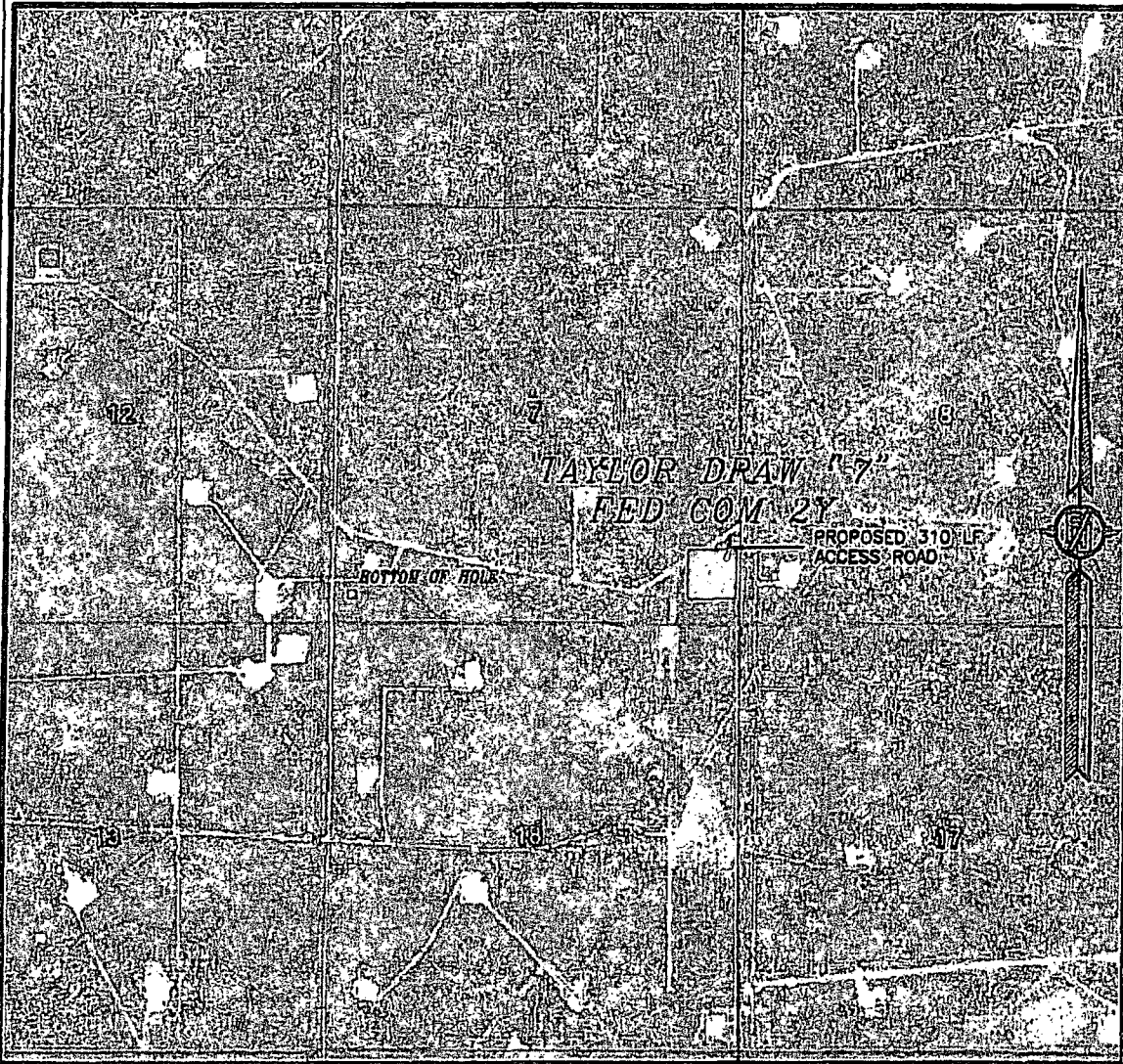
DIRECTIONS TO LOCATION
FROM THE INTERSECTION OF CR 128 (MALJAMAR ROAD) AND CR 248
(LUSK PLANT ROAD) GO NORTH ON CR 128 1.5 MILES. TURN LEFT
ON CALICHE ROAD OVER CATTLE GUARD ABOUT 325° TO ROAD
INTERSECTION ON LEFT (SOUTH). START PROPOSED ROAD, GO SOUTH
310' TO NORTHEAST CORNER OF PAD.

JULY 17, 2015

SURVEY NO. 2576D

MADRON SURVEYING, INC. 301 SOUTH CANAL (575) 234-3341 CARLSBAD, NEW MEXICO

SECTION 7, TOWNSHIP 19 SOUTH, RANGE 32 EAST, N.M.P.M.
LEA COUNTY, STATE OF NEW MEXICO
AERIAL PHOTO



NOT TO SCALE
AERIAL PHOTO:
GOOGLE EARTH
MARCH 2012

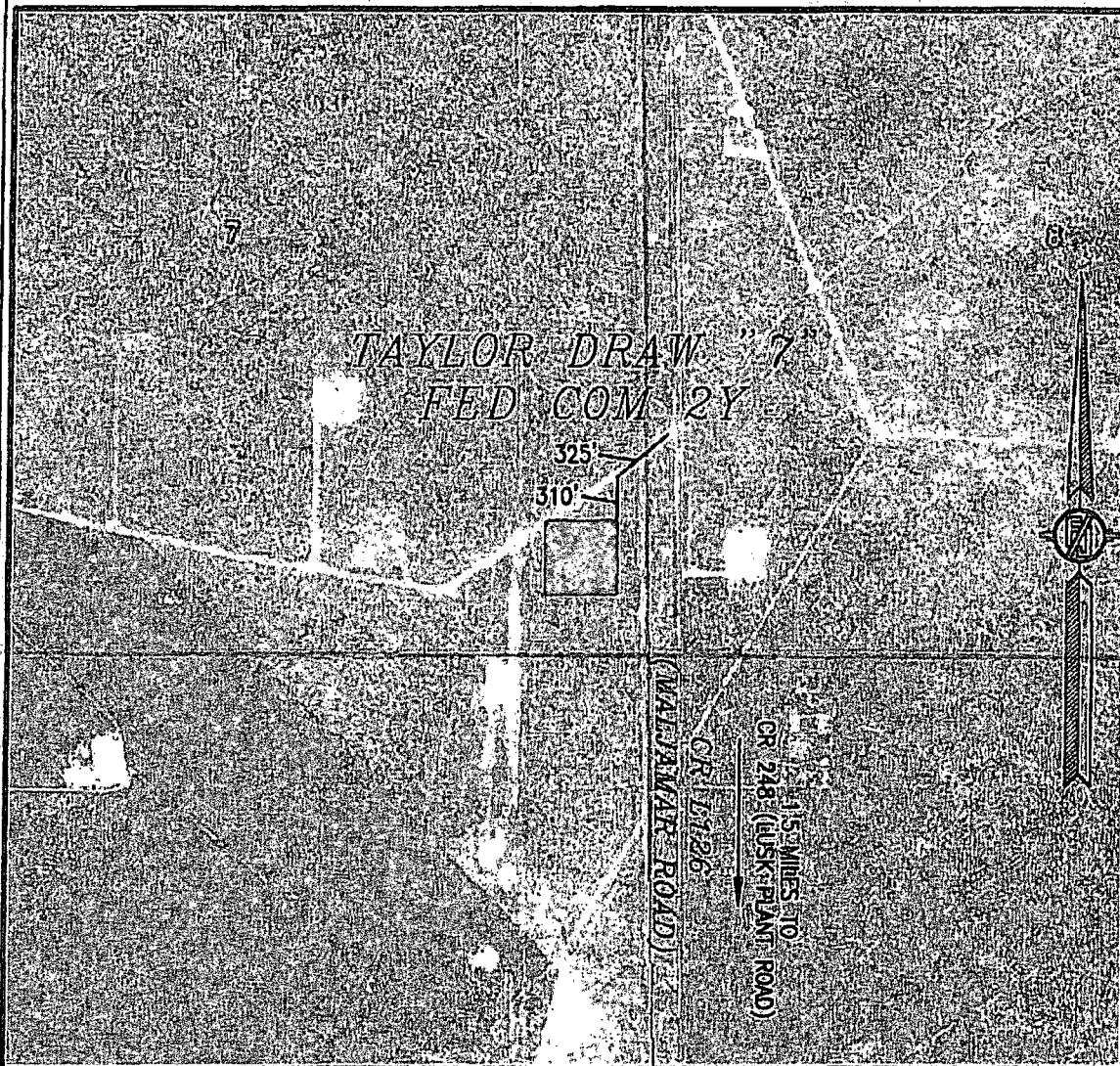
DEVON ENERGY PRODUCTION COMPANY, L.P.
TAYLOR DRAW "7" FED COM 2Y
LOCATED 665 FT. FROM THE SOUTH LINE
AND 400 FT. FROM THE EAST LINE OF
SECTION 7, TOWNSHIP 19 SOUTH,
RANGE 32 EAST, N.M.P.M.
LEA COUNTY, STATE OF NEW MEXICO

JULY 17, 2015

SURVEY NO. 2576D

MADRON SURVEYING, INC. 301 SOUTH CANAL (575) 234-3341 CARLSBAD, NEW MEXICO

SECTION 7, TOWNSHIP 19 SOUTH, RANGE 32 EAST, N.M.P.M.
LEA COUNTY, STATE OF NEW MEXICO
ACCESS AERIAL ROUTE MAP



NOT TO SCALE
AERIAL PHOTO:
GOOGLE EARTH
MARCH 2012

DEVON ENERGY PRODUCTION COMPANY, L.P.
TAYLOR DRAW "7" FED COM 2Y
LOCATED 665 FT. FROM THE SOUTH LINE
AND 400 FT. FROM THE EAST LINE OF
SECTION 7, TOWNSHIP 19 SOUTH,
RANGE 32 EAST, N.M.P.M.
LEA COUNTY, STATE OF NEW MEXICO

JULY 17, 2015

SURVEY NO. 2576D

MADRON SURVEYING, INC. 301 SOUTH CANAL (575) 234-3341 **CARLSBAD, NEW MEXICO**