

District I  
1625 N. French Dr., Hobbs, NM 88240  
Phone: (575) 393-6161 Fax: (575) 393-0720  
District II  
811 S. First St., Artesia, NM 88210  
Phone: (575) 748-1283 Fax: (575) 748-9720  
District III  
1000 Rio Brazos Road, Aztec, NM 87410  
Phone: (505) 334-6178 Fax: (505) 334-6170  
District IV  
1220 S. St. Francis Dr., Santa Fe, NM 87505  
Phone: (505) 476-3460 Fax: (505) 476-3462

State of New Mexico  
Energy, Minerals & Natural Resources Department  
OIL CONSERVATION DIVISION  
1220 South St. Francis Dr.  
Santa Fe, NM 87505

Form C-102  
Revised August 1, 2011  
Submit one copy to appropriate  
District Office

☐ AMENDED REPORT

WELL LOCATION AND ACREAGE DEDICATION PLAT

<sup>1</sup> API Number <b>30-025-42757</b>	<sup>2</sup> Pool Code <b>17980</b>	<sup>3</sup> Pool Name <b>Wolfcamp DOGGIE DRAW, WOLF CAMP</b>
<sup>4</sup> Property Code <b>315170</b>	<sup>5</sup> Property Name <b>YATES 16 STATE</b>	
<sup>7</sup> OGRID No. <b>270329</b>	<sup>8</sup> Operator Name <b>ENDURANCE RESOURCES, LLC</b>	
		<sup>6</sup> Well Number <b>1H</b>
		<sup>9</sup> Elevation <b>3255.9</b>

<sup>10</sup> Surface Location

UL or lot no.	Section	Township	Range	Lot Idn	Feet from the	North/South line	Feet from the	East/West line	County
<b>D</b>	<b>16</b>	<b>25 S</b>	<b>35 E</b>		<b>230</b>	<b>NORTH</b>	<b>330</b>	<b>WEST</b>	<b>LEA</b>

<sup>11</sup> Bottom Hole Location If Different From Surface

UL or lot no.	Section	Township	Range	Lot Idn	Feet from the	North/South line	Feet from the	East/West line	County
<b>M</b>	<b>16</b>	<b>25 S</b>	<b>35 E</b>		<b>230</b>	<b>SOUTH</b>	<b>660</b>	<b>WEST</b>	<b>LEA</b>

<sup>12</sup> Dedicated Acres <b>160</b>	<sup>13</sup> Joint or Infill	<sup>14</sup> Consolidation Code	<sup>15</sup> Order No.
---	-------------------------------	----------------------------------	-------------------------

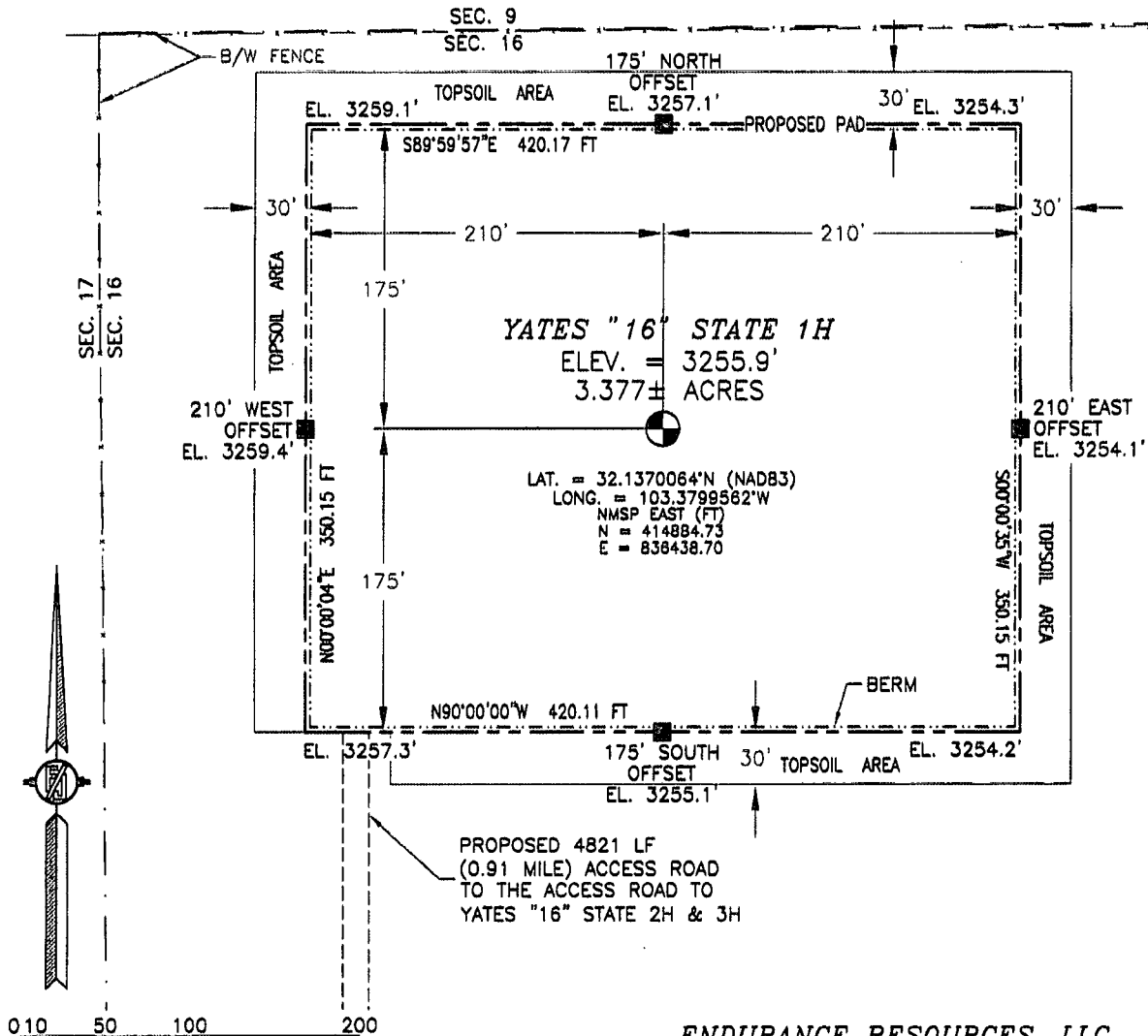
No allowable will be assigned to this completion until all interests have been consolidated or a non-standard unit has been approved by the division.

<p>N89°30'57"E 2642.77 FT</p> <p>NW CORNER SEC. 16 LAT. = 32.1376389°N LONG. = 103.3810222°W NMSP EAST (FT) N = 415111.91 E = 838106.67</p> <p>330'</p> <p>230'</p> <p>SURFACE LOCATION</p> <p>YATES "16" STATE 1H ELEV. = 3255.9' LAT. = 32.1370064°N (NAD83) LONG. = 103.3799562°W NMSP EAST (FT) N = 414884.73 E = 836438.70</p> <p>W O CORNER SEC. 16 LAT. = 32.1303772°N LONG. = 103.3810221°W NMSP EAST (FT) N = 412470.12 E = 836130.06</p> <p>BOTTOM OF HOLE LAT. = 32.1237517°N LONG. = 103.3788910°W NMSP EAST (FT) N = 410065.63 E = 836811.14</p> <p>660'</p> <p>230'</p> <p>SW CORNER SEC. 16 LAT. = 32.1231168°N LONG. = 103.3810224°W NMSP EAST (FT) N = 409828.81 E = 836153.33</p> <p>DNF</p> <p>S89°24'16"W 2640.67 FT</p>		<p>N89°30'41"E 2641.69 FT</p> <p>NE CORNER SEC. 16 LAT. = 32.1376326°N LONG. = 103.3639534°W NMSP EAST (FT) N = 415156.76 E = 841390.23</p> <p>NOTE: LATITUDE AND LONGITUDE COORDINATES ARE SHOWN USING THE NORTH AMERICAN DATUM OF 1983 (NAD83). LISTED NEW MEXICO STATE PLANE EAST COORDINATES ARE GRID (NAD83). BASIS OF BEARING AND DISTANCES USED ARE NEW MEXICO STATE PLANE EAST COORDINATES MODIFIED TO THE SURFACE.</p> <p>E O CORNER SEC. 16 LAT. = 32.1303928°N LONG. = 103.3639283°W NMSP EAST (FT) N = 412523.00 E = 841421.72</p> <p>SE CORNER SEC. 16 LAT. = 32.1231383°N LONG. = 103.3639664°W NMSP EAST (FT) N = 409883.71 E = 841433.67</p> <p>S58°24'16"W 2640.67 FT</p>	<p><sup>17</sup> OPERATOR CERTIFICATION</p> <p>I hereby certify that the information contained herein is true and complete to the best of my knowledge and belief, and that this organization either owns a working interest or leased mineral interest in the land including the proposed bottom hole location or has a right to drill this well at this location pursuant to a contract with an owner of such a mineral or working interest, or to a voluntary pooling agreement or a compulsory pooling order heretofore entered by the division.</p> <p><i>Tinlee Tilton</i> 8/19/2015 Signature Date</p> <p>Tinlee Tilton Printed Name</p> <p>tinlee@endurance E-mail Address</p> <p>resourcesllc.com</p> <p><sup>18</sup> SURVEYOR CERTIFICATION</p> <p>I hereby certify that the well location shown on this plat was plotted from field notes of actual surveys made by me or under my supervision, and that the same are true and correct to the best of my belief.</p> <p>AUGUST 4, 2015 Date of Survey</p> <p><i>[Signature]</i> Signature and Seal of Professional Surveyor</p> <p>Certificate Number FILMON F. JARAMILLO, PLS 12797</p> <p>SURVEY NO. 4037A</p>
--	--	--	--

AUG 28 2015

SECTION 16, TOWNSHIP 25 SOUTH, RANGE 35 EAST, N.M.P.M.  
LEA COUNTY, STATE OF NEW MEXICO  
**SITE MAP**

NOTE: LATITUDE AND LONGITUDE COORDINATES ARE SHOWN USING THE NORTH AMERICAN DATUM OF 1983 (NAD83). LISTED NEW MEXICO STATE PLANE EAST COORDINATES ARE GRID (NAD83). BASIS OF BEARING AND DISTANCES USED ARE NEW MEXICO STATE PLANE EAST COORDINATES MODIFIED TO THE SURFACE



DIRECTIONS TO LOCATION  
FROM STATE HIGHWAY 128 AND CR 2 (BATTLE AXE) GO EAST ON  
STATE HIGHWAY 128 0.2 OF A MILE TO A LEASE ROAD ON RIGHT  
(SOUTH), TURN SOUTH GO ON LEASE ROAD APPROX. 4.5 MILES,  
TURN LEFT (SOUTHEAST), GO SOUTHEAST APPROX. 1.1 MILES, TURN  
LEFT (NORTHEAST) AT LEASE ROAD APPROX. 0.3 OF A MILE, ROAD  
BENDS RIGHT AND GO EAST APPROX. 0.84 OF A MILE TO A  
PROPOSED ROAD SURVEY LATHS WITH RED & WHITE FLAGGING.  
FOLLOW ROAD LATHS NORTHEAST 109°, ROAD PI RIGHT GO EAST 139°  
TO BEGIN ROAD LATH ROAD GOES NORTH, FOLLOW ROAD LATHS  
NORTH APPROX. 4821' (0.91 OF A MILE) TO THE SOUTHWEST PAD  
CORNER FOR THIS LOCATION.

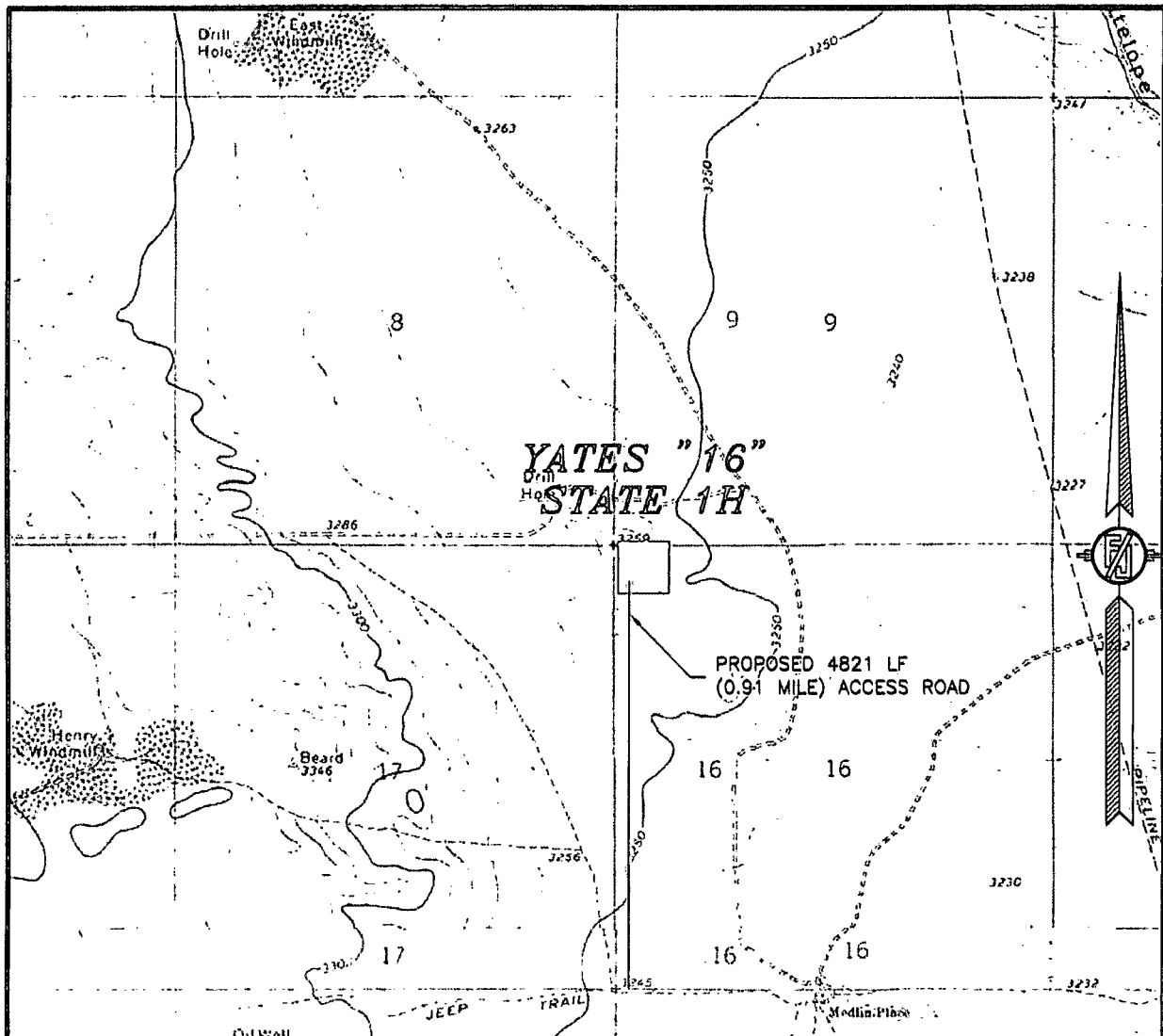
ENDURANCE RESOURCES, LLC  
YATES "16" STATE 1H  
LOCATED 230 FT. FROM THE NORTH LINE  
AND 330 FT. FROM THE WEST LINE OF  
SECTION 16, TOWNSHIP 25 SOUTH,  
RANGE 35 EAST, N.M.P.M.  
LEA COUNTY, STATE OF NEW MEXICO

AUGUST 4, 2015

SURVEY NO. 4037A

MADRON SURVEYING, INC. 301 SOUTH CANAL CARLSBAD, NEW MEXICO  
(575) 234-3341

SECTION 16, TOWNSHIP 25 SOUTH, RANGE 35 EAST, N.M.P.M.  
LEA COUNTY, STATE OF NEW MEXICO  
LOCATION VERIFICATION MAP



USGS QUAD MAP:  
CUSTER MOUNTAIN

NOT TO SCALE

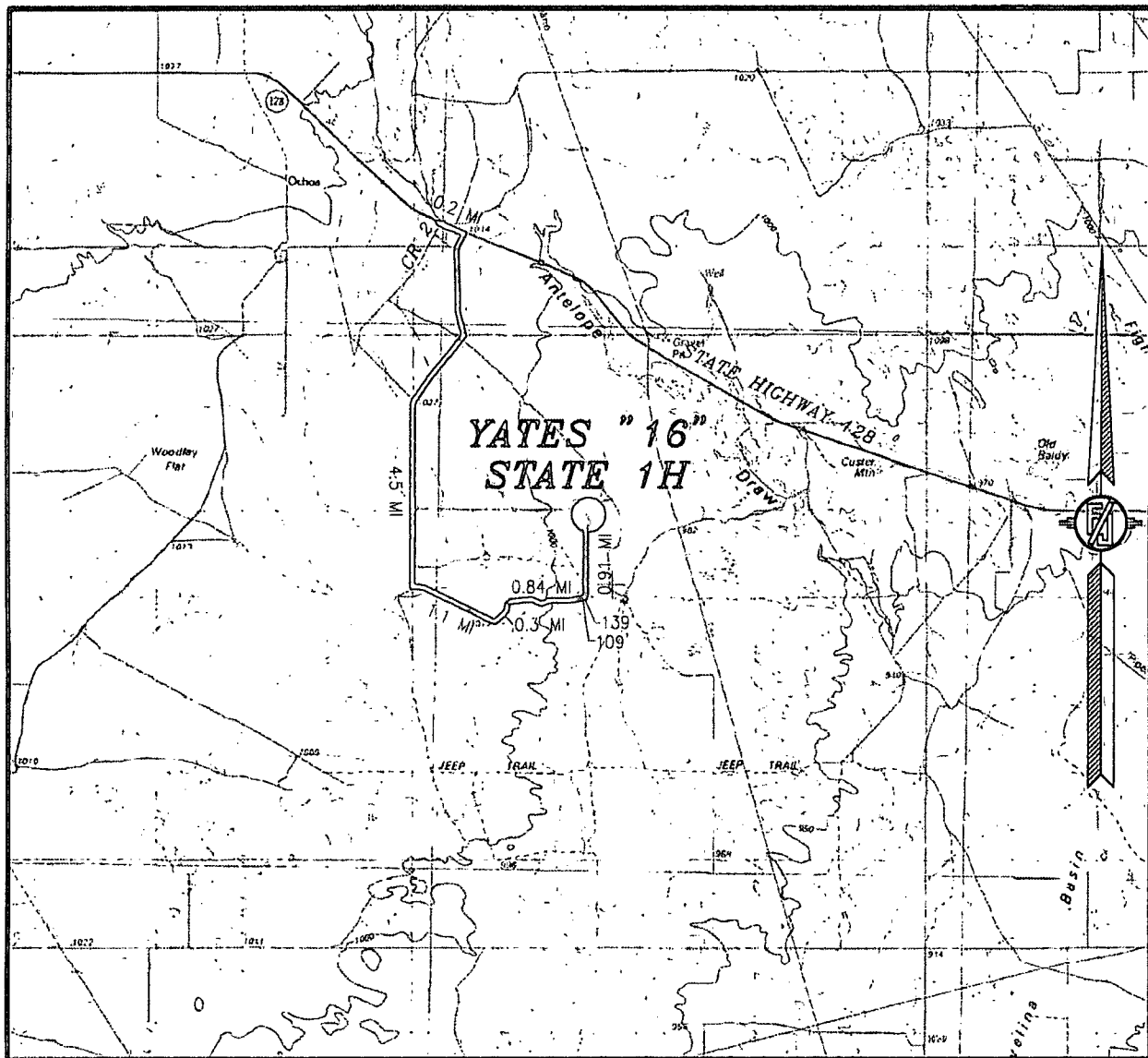
ENDURANCE RESOURCES, LLC  
YATES "16" STATE 1H  
LOCATED 230 FT. FROM THE NORTH LINE  
AND 330 FT. FROM THE WEST LINE OF  
SECTION 16, TOWNSHIP 25 SOUTH,  
RANGE 35 EAST, N.M.P.M.  
LEA COUNTY, STATE OF NEW MEXICO

AUGUST 4, 2015

SURVEY NO. 4037A

MADRON SURVEYING, INC. 301 SOUTH CANAL CARLSBAD, NEW MEXICO  
(575) 234-3341

SECTION 16, TOWNSHIP 25 SOUTH, RANGE 35 EAST, N.M.P.M.  
LEA COUNTY, STATE OF NEW MEXICO  
VICINITY MAP



DISTANCES IN MILES

NOT TO SCALE

**DIRECTIONS TO LOCATION**

FROM STATE HIGHWAY 128 AND CR 2 (BATTLE AXE) GO EAST ON STATE HIGHWAY 128 0.2 OF A MILE TO A LEASE ROAD ON RIGHT (SOUTH), TURN SOUTH GO ON LEASE ROAD APPROX. 4.5 MILES, TURN LEFT (SOUTHEAST), GO SOUTHEAST APPROX. 1.1 MILES, TURN LEFT (NORTHEAST) AT LEASE ROAD APPROX. 0.3 OF A MILE, ROAD BENDS RIGHT AND GO EAST APPROX. 0.84 OF A MILE TO A PROPOSED ROAD SURVEY LATHS WITH RED & WHITE FLAGGING. FOLLOW ROAD LATHS NORTHEAST 109°, ROAD PI RIGHT GO EAST 139° TO BEGIN ROAD LATH ROAD GOES NORTH, FOLLOW ROAD LATHS NORTH APPROX. 4821' (0.91 OF A MILE) TO THE SOUTHWEST PAD CORNER FOR THIS LOCATION.

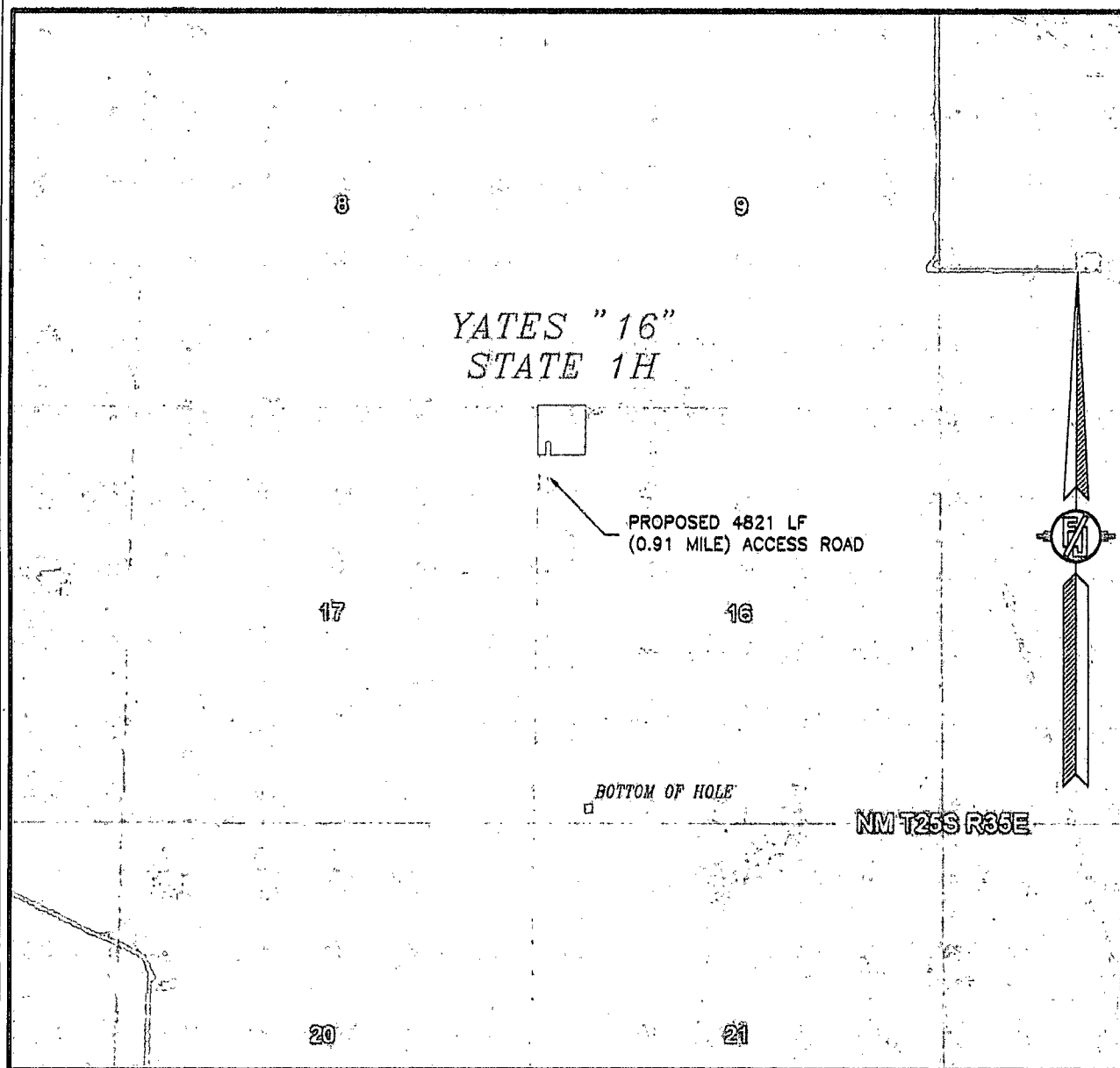
**ENDURANCE RESOURCES, LLC**  
**YATES "16" STATE 1H**  
LOCATED 230 FT. FROM THE NORTH LINE  
AND 330 FT. FROM THE WEST LINE OF  
SECTION 16, TOWNSHIP 25 SOUTH,  
RANGE 35 EAST, N.M.P.M.  
LEA COUNTY, STATE OF NEW MEXICO

AUGUST 4, 2015

MADRON SURVEYING, INC. 301 SOUTH CANAL  
(575) 234-3341

SURVEY NO. 4037A  
CARLSBAD, NEW MEXICO

SECTION 16, TOWNSHIP 25 SOUTH, RANGE 35 EAST, N.M.P.M.  
LEA COUNTY, STATE OF NEW MEXICO  
AERIAL PHOTO



NOT TO SCALE  
AERIAL PHOTO:  
GOOGLE EARTH  
APRIL 2013

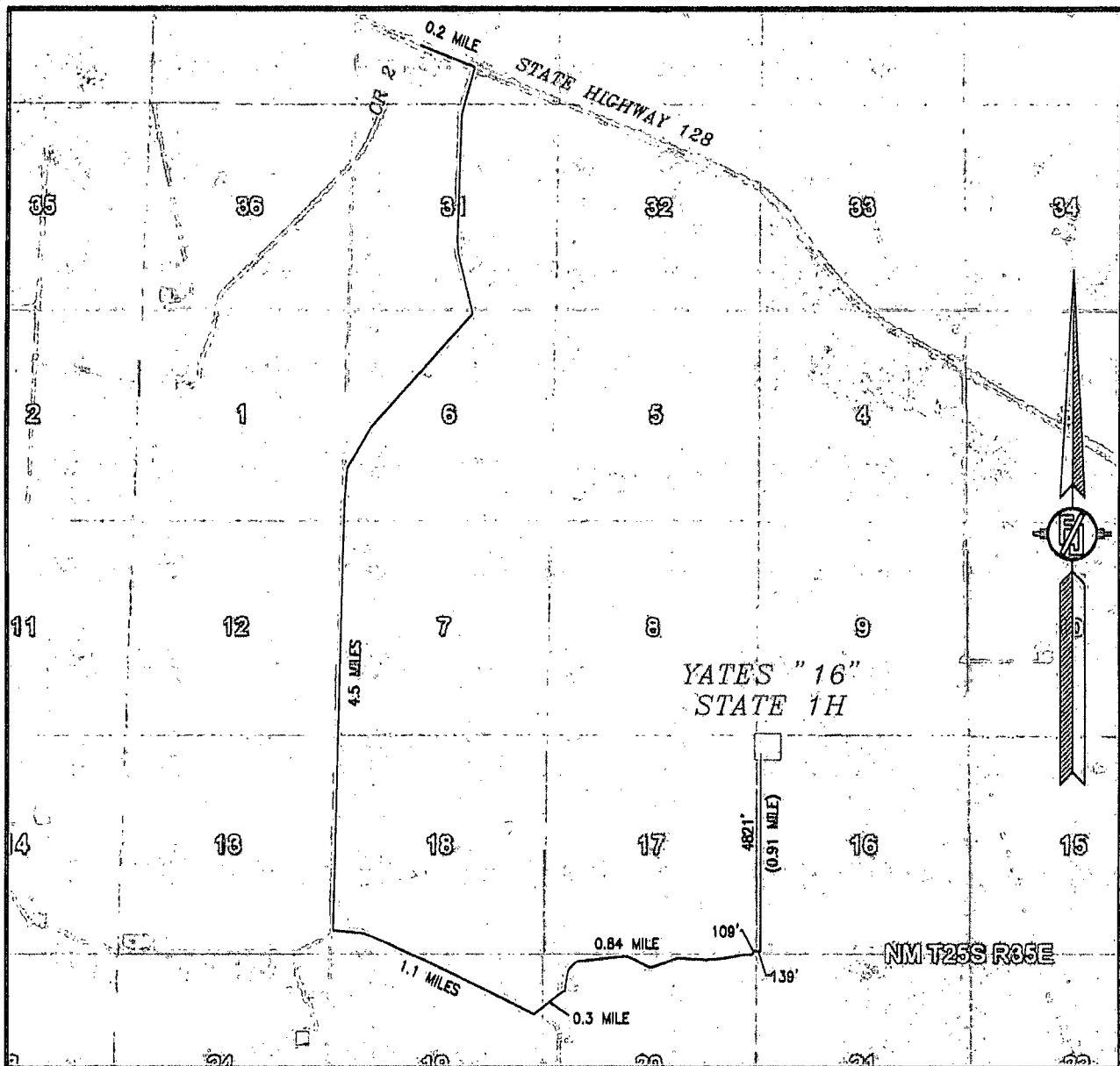
ENDURANCE RESOURCES, LLC  
YATES "16" STATE 1H  
LOCATED 230 FT. FROM THE NORTH LINE  
AND 330 FT. FROM THE WEST LINE OF  
SECTION 16, TOWNSHIP 25 SOUTH,  
RANGE 35 EAST, N.M.P.M.  
LEA COUNTY, STATE OF NEW MEXICO

AUGUST 4, 2015

SURVEY NO. 4037A

MADRON SURVEYING, INC. 301 SOUTH CANAL (575) 234-3341 CARLSBAD, NEW MEXICO

SECTION 16, TOWNSHIP 25 SOUTH, RANGE 35 EAST, N.M.P.M.  
LEA COUNTY, STATE OF NEW MEXICO  
ACCESS AERIAL ROUTE MAP



NOT TO SCALE  
AERIAL PHOTO:  
GOOGLE EARTH  
APRIL 2013

ENDURANCE RESOURCES, LLC  
YATES "16" STATE 1H  
LOCATED 230 FT. FROM THE NORTH LINE  
AND 330 FT. FROM THE WEST LINE OF  
SECTION 16, TOWNSHIP 25 SOUTH,  
RANGE 35 EAST, N.M.P.M.  
LEA COUNTY, STATE OF NEW MEXICO

AUGUST 4, 2015

SURVEY NO. 4037A

MADRON SURVEYING, INC. 301 SOUTH CANAL (575) 234-3341 CARLSBAD, NEW MEXICO