

District I  
1625 N. French Dr., Hobbs, NM 88240  
Phone: (575) 393-6161 Fax: (575) 393-0720  
District II  
811 S. First St., Artesia, NM 88210  
Phone: (575) 748-1283 Fax: (575) 748-9720  
District III  
1000 Rio Brazos Road, Aztec, NM 87410  
Phone: (505) 334-6178 Fax: (505) 334-6170  
District IV  
1220 S. St. Francis Dr., Santa Fe, NM 87505  
Phone: (505) 476-3460 Fax: (505) 476-3462

State of New Mexico  
Energy, Minerals & Natural Resources Department  
OIL CONSERVATION DIVISION  
1220 South St. Francis Dr.  
Santa Fe, NM 87505

Form C-102  
Revised August 1, 2011  
Submit one copy to appropriate  
District Office  
☐ AMENDED REPORT

WELL LOCATION AND ACREAGE DEDICATION PLAT

<sup>1</sup> API Number <b>30-025-42784</b>	<sup>2</sup> Pool Code <b>59900</b>	<sup>3</sup> Pool Name <b>Triple X; Bone Spring</b>
<sup>4</sup> Property Code <b>30884</b>	<sup>5</sup> Property Name <b>THISTLE UNIT</b>	<sup>6</sup> Well Number <b>96H</b>
<sup>7</sup> OGRID No. <b>6137</b>	<sup>8</sup> Operator Name <b>DEVON ENERGY PRODUCTION COMPANY, L.P.</b>	<sup>9</sup> Elevation <b>3706.3</b>

<sup>10</sup> Surface Location

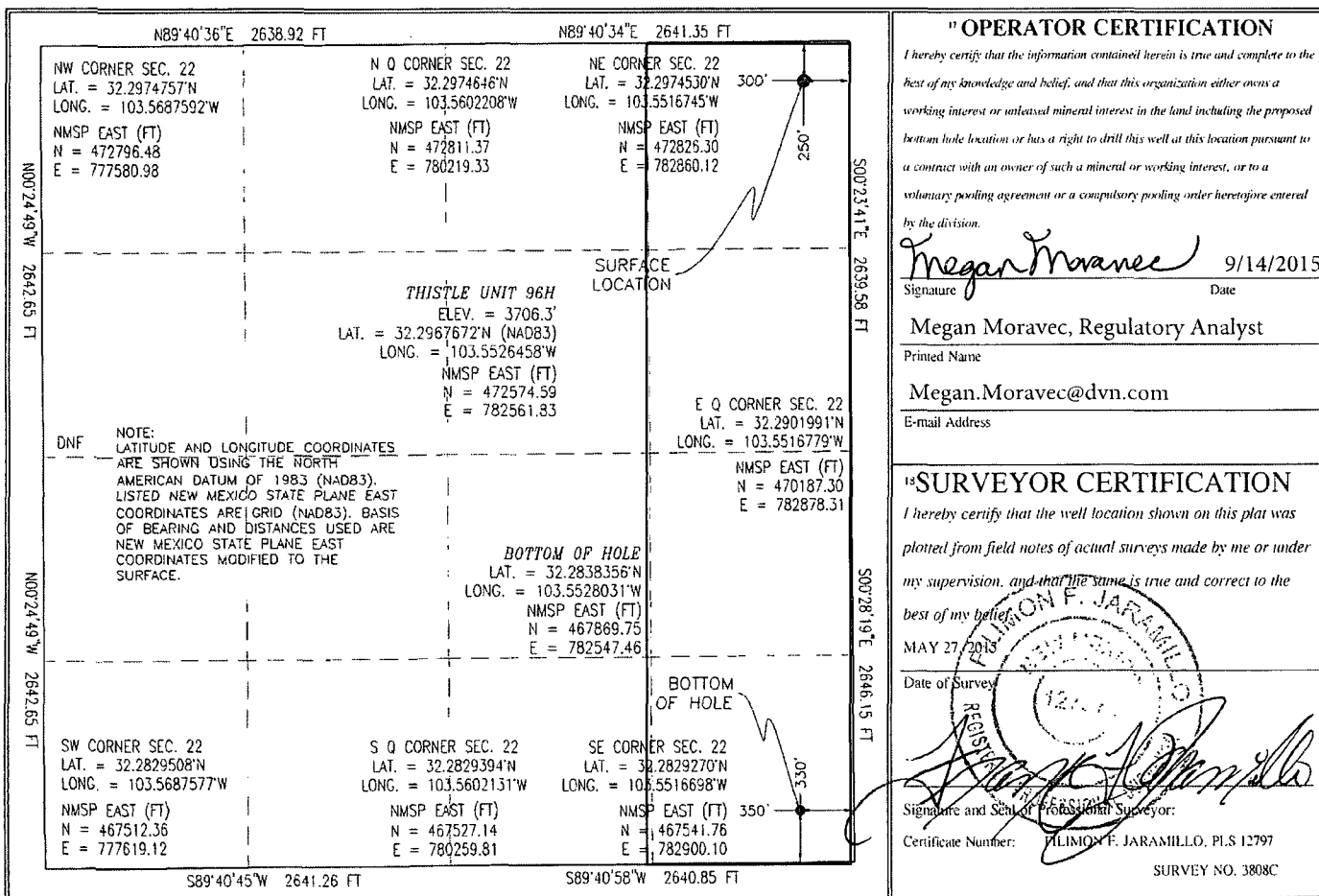
UL or lot no.	Section	Township	Range	Lot Idn	Feet from the	North/South line	Feet from the	East/West line	County
<b>A</b>	<b>22</b>	<b>23 S</b>	<b>33 E</b>		<b>250</b>	<b>NORTH</b>	<b>300</b>	<b>EAST</b>	<b>LEA</b>

<sup>11</sup> Bottom Hole Location If Different From Surface

UL or lot no.	Section	Township	Range	Lot Idn	Feet from the	North/South line	Feet from the	East/West line	County
<b>P</b>	<b>22</b>	<b>23 S</b>	<b>33 E</b>		<b>330</b>	<b>SOUTH</b>	<b>350</b>	<b>EAST</b>	<b>LEA</b>

<sup>12</sup> Dedicated Acres <b>160</b>	<sup>13</sup> Joint or Infill	<sup>14</sup> Consolidation Code	<sup>15</sup> Order No.
---	-------------------------------	----------------------------------	-------------------------

No allowable will be assigned to this completion until all interests have been consolidated or a non-standard unit has been approved by the division.



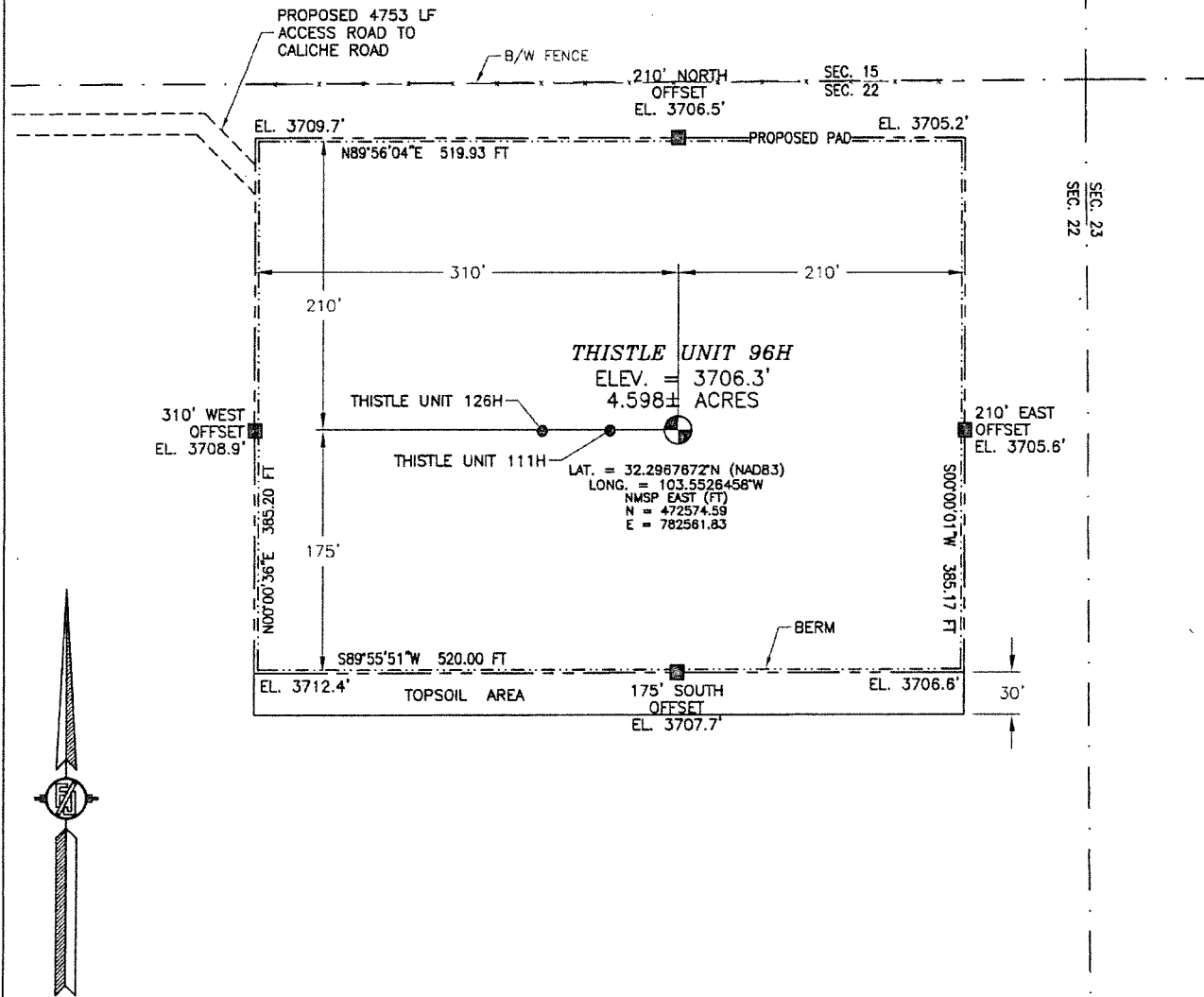
Project Area: ☐

SEP 18 2015

SECTION 22, TOWNSHIP 23 SOUTH, RANGE 33 EAST, N.M.P.M.  
LEA COUNTY, STATE OF NEW MEXICO

SITE MAP

NOTE: LATITUDE AND LONGITUDE COORDINATES ARE SHOWN USING THE NORTH AMERICAN DATUM OF 1983 (NAD83). LISTED NEW MEXICO STATE PLANE EAST COORDINATES ARE GRID (NAD83). BASIS OF BEARING AND DISTANCES USED ARE NEW MEXICO STATE PLANE EAST COORDINATES MODIFIED TO THE SURFACE



0 12 60 120 240

SCALE 1" = 120'

DIRECTIONS TO LOCATION

FROM STATE HIGHWAY 128 AND CR 21 (DELAWARE BASIN) GO NORTH ON CR 21 3.95 MILES, TURN LEFT ON PAVED ROAD (XL ROAD) AND GO WEST 3.4 MILES, TURN RIGHT ON CALICHE ROAD AND GO NORTH 0.9 MILE, BEND LEFT AND NORTHWEST 0.15 MILE, BEND RIGHT AND GO NORTHEAST 0.1 MILE, BEND LEFT GO NORTH 0.95 MILE ON RIGHT SIDE BEGIN PROPOSED ROAD, FOLLOW EAST 4753' TO NORTHWEST PAD CORNER.

DEVON ENERGY PRODUCTION COMPANY, L.P.

THISTLE UNIT 96H

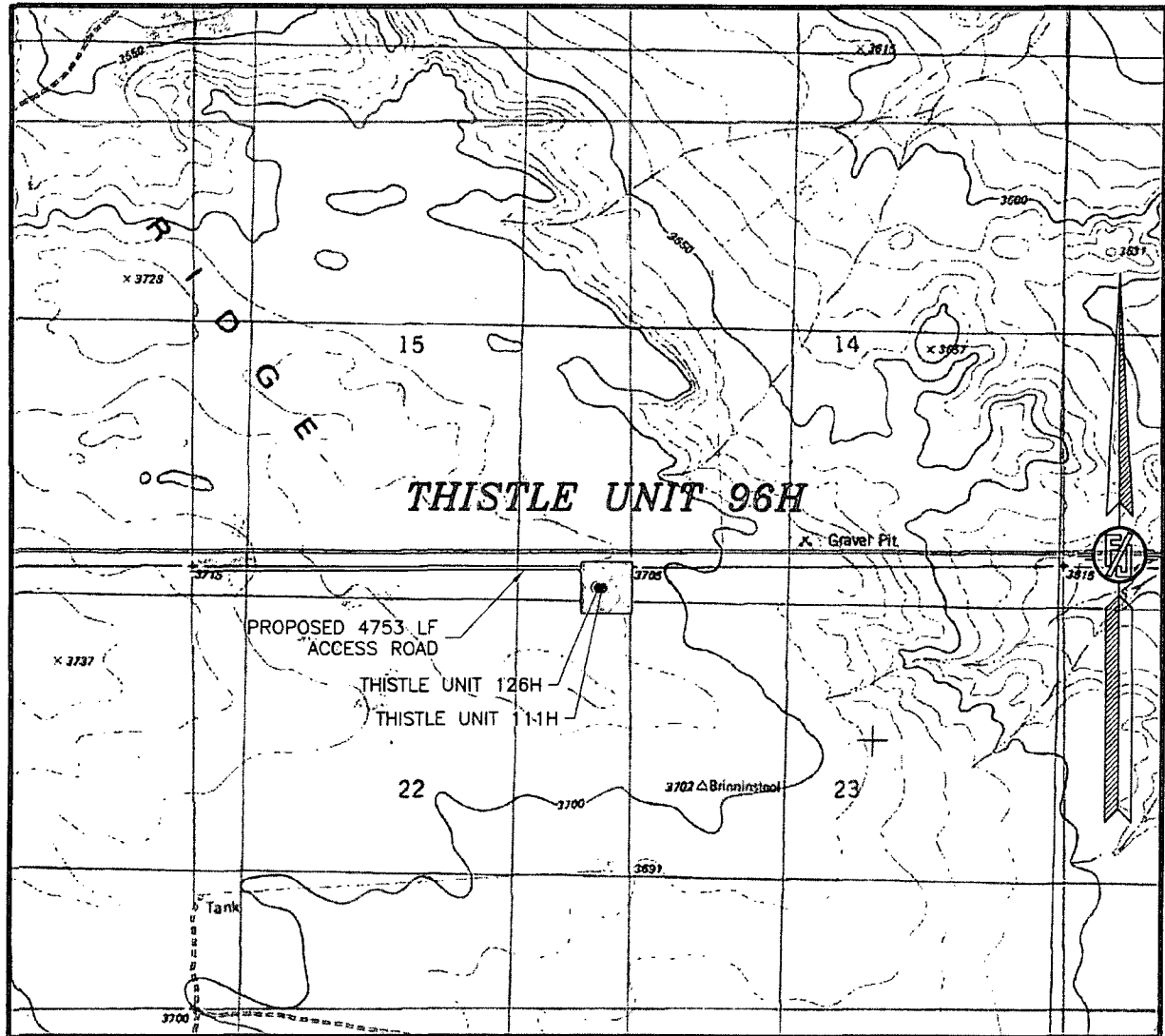
LOCATED 250 FT. FROM THE NORTH LINE  
AND 300 FT. FROM THE EAST LINE OF  
SECTION 22, TOWNSHIP 23 SOUTH,  
RANGE 33 EAST, N.M.P.M.  
LEA COUNTY, STATE OF NEW MEXICO

MAY 27, 2015

SURVEY NO. 3808C

MADRON SURVEYING, INC. 301 SOUTH CANAL (575) 234-3341 CARLSBAD, NEW MEXICO

SECTION 22, TOWNSHIP 23 SOUTH, RANGE 33 EAST, N.M.P.M.  
LEA COUNTY, STATE OF NEW MEXICO  
LOCATION VERIFICATION MAP



USGS QUAD MAP:  
TIP TOP WELLS

NOT TO SCALE

DEVON ENERGY PRODUCTION COMPANY, L.P.  
**THISTLE UNIT 96H**

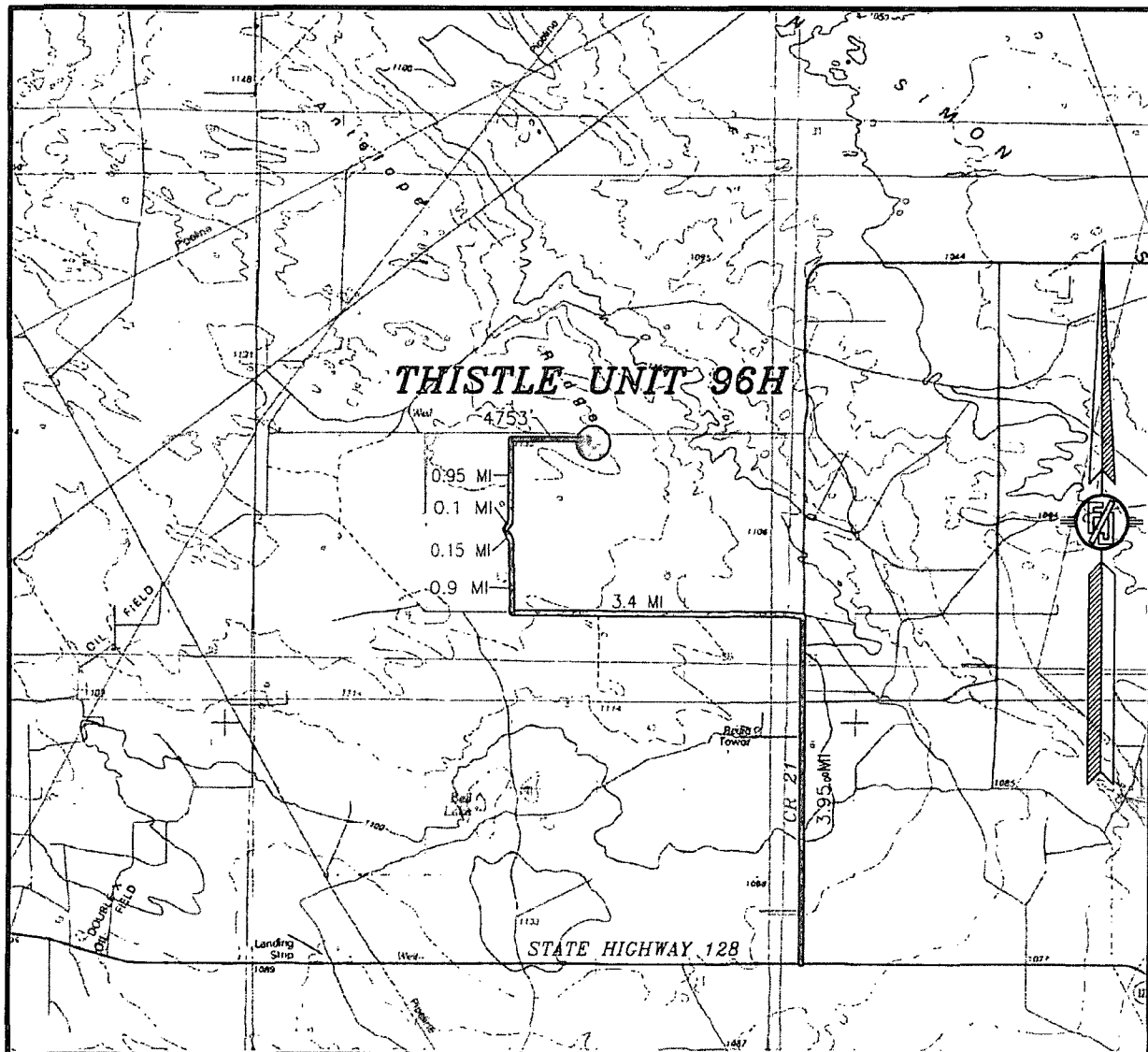
LOCATED 250 FT. FROM THE NORTH LINE  
AND 300 FT. FROM THE EAST LINE OF  
SECTION 22, TOWNSHIP 23 SOUTH,  
RANGE 33 EAST, N.M.P.M.  
LEA COUNTY, STATE OF NEW MEXICO

MAY 27, 2015

SURVEY NO. 3808C

MADRON SURVEYING, INC. 301 SOUTH CANAL (575) 234-3341 CARLSBAD, NEW MEXICO

SECTION 22, TOWNSHIP 23 SOUTH, RANGE 33 EAST, N.M.P.M.  
LEA COUNTY, STATE OF NEW MEXICO  
VICINITY MAP



DISTANCES IN MILES

NOT TO SCALE

DEVON ENERGY PRODUCTION COMPANY, L.P.  
**THISTLE UNIT 96H**

LOCATED 250 FT. FROM THE NORTH LINE  
AND 300 FT. FROM THE EAST LINE OF  
SECTION 22, TOWNSHIP 23 SOUTH,  
RANGE 33 EAST, N.M.P.M.  
LEA COUNTY, STATE OF NEW MEXICO

**DIRECTIONS TO LOCATION**

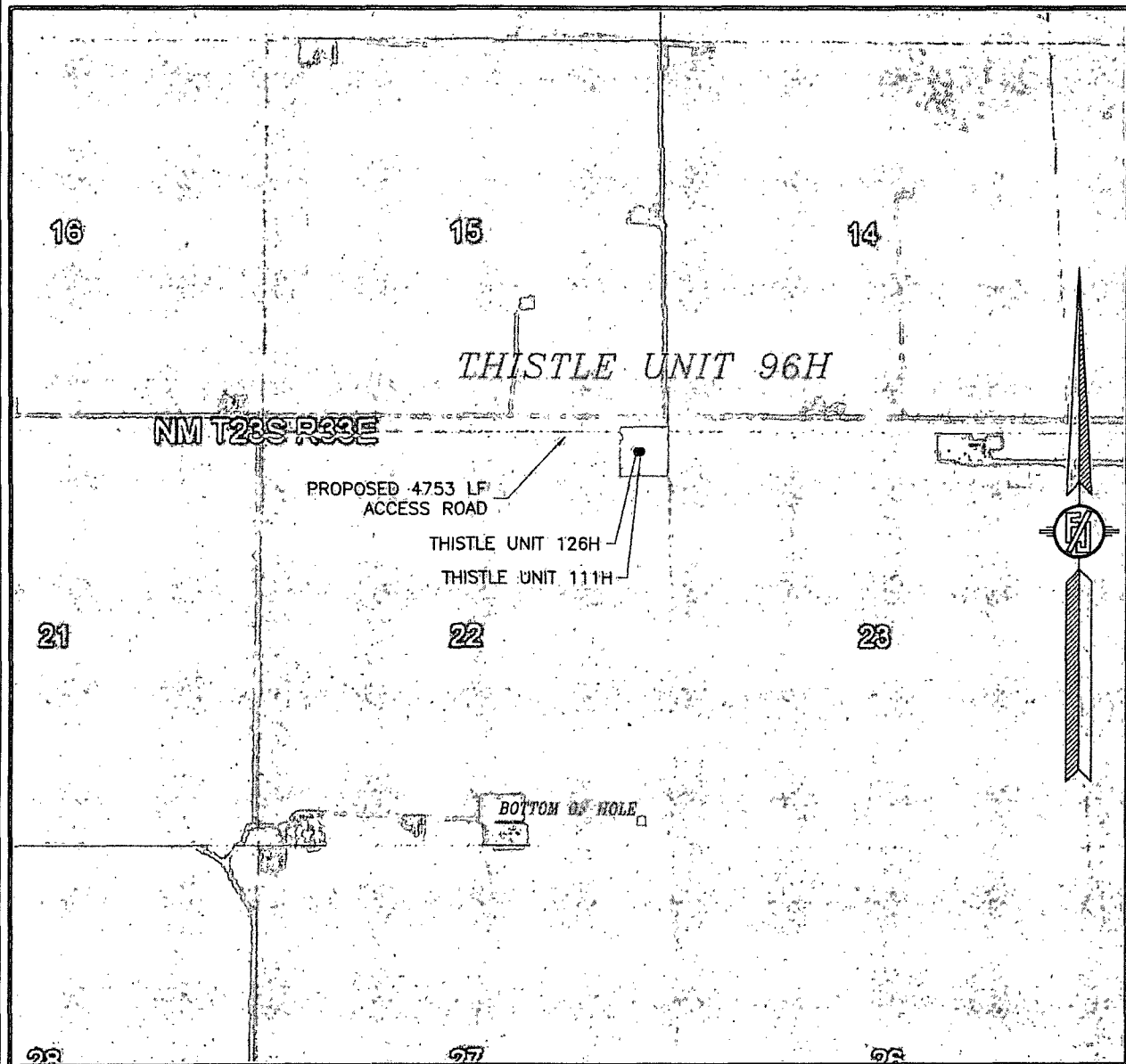
FROM STATE HIGHWAY 128 AND CR 21 (DELAWARE BASIN) GO NORTH ON CR 21 3.95 MILES, TURN LEFT ON PAVED ROAD (XL ROAD) AND GO WEST 3.4 MILES, TURN RIGHT ON CALICHE ROAD AND GO NORTH 0.9 MILE, BEND LEFT AND NORTHWEST 0.15 MILE, BEND RIGHT AND GO NORTHEAST 0.1 MILE, BEND LEFT GO NORTH 0.95 MILE ON RIGHT SIDE BEGIN PROPOSED ROAD, FOLLOW EAST 4753' TO NORTHWEST PAD CORNER.

MAY 27, 2015

SURVEY NO. 3808C

MADRON SURVEYING, INC. 301 SOUTH CANAL (575) 234-3341 CARLSBAD, NEW MEXICO

SECTION 22, TOWNSHIP 23 SOUTH, RANGE 33 EAST, N.M.P.M.  
LEA COUNTY, STATE OF NEW MEXICO  
**AERIAL PHOTO**



NOT TO SCALE  
AERIAL PHOTO:  
GOOGLE EARTH  
FEBRUARY 2014

DEVON ENERGY PRODUCTION COMPANY, L.P.

**THISTLE UNIT 96H**

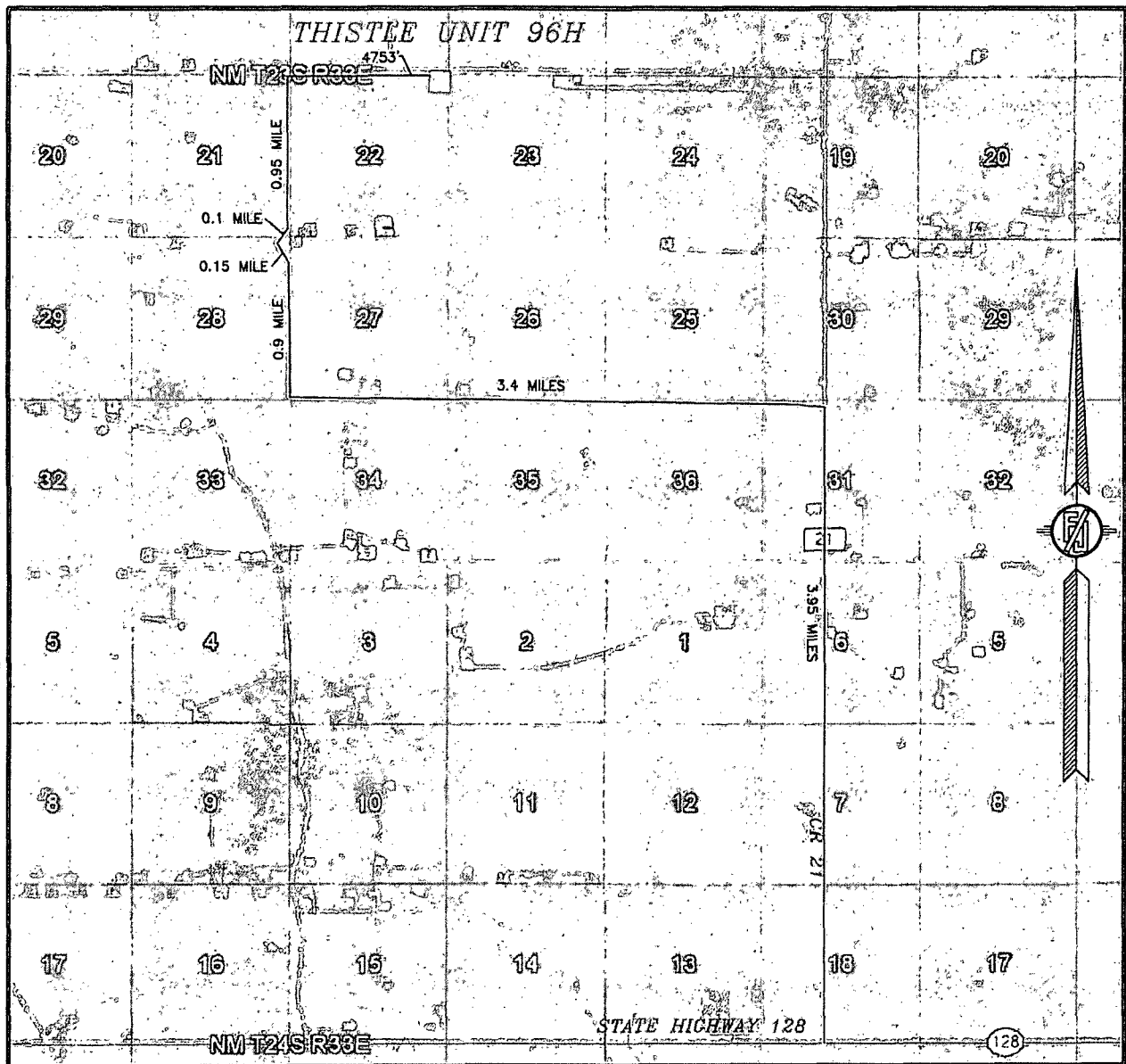
LOCATED 250 FT. FROM THE NORTH LINE  
AND 300 FT. FROM THE EAST LINE OF  
SECTION 22, TOWNSHIP 23 SOUTH,  
RANGE 33 EAST, N.M.P.M.  
LEA COUNTY, STATE OF NEW MEXICO

MAY 27, 2015

SURVEY NO. 3808C

MADRON SURVEYING, INC. 301 SOUTH CANAL (575) 234-3341 CARLSBAD, NEW MEXICO

SECTION 22, TOWNSHIP 23 SOUTH, RANGE 33 EAST, N.M.P.M.  
LEA COUNTY, STATE OF NEW MEXICO  
ACCESS AERIAL ROUTE MAP



NOT TO SCALE  
AERIAL PHOTO:  
GOOGLE EARTH  
FEBRUARY 2014

DEVON ENERGY PRODUCTION COMPANY, L.P.

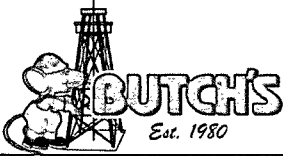
**THISTLE UNIT 96H**

LOCATED 250 FT. FROM THE NORTH LINE  
AND 300 FT. FROM THE EAST LINE OF  
SECTION 22, TOWNSHIP 23 SOUTH,  
RANGE 33 EAST, N.M.P.M.  
LEA COUNTY, STATE OF NEW MEXICO

MAY 27, 2015

SURVEY NO. 3808C

MADRON SURVEYING, INC. 301 SOUTH CANAL (575) 234-3341 CARLSBAD, NEW MEXICO



**BRHAS.com**  
**1(888) 400-6294**



MARCH 13, 2015

DEVON

AMANDA GREENWOOD  
[Amanda.Greenwood@dvn.com](mailto:Amanda.Greenwood@dvn.com)

ON MARCH 13, 2015, WE SET 10' X 30" PIPE WITH A LID ON THE BOSS HOGG 15 STATE COM 1H. WE CEMENTED THE 30" CASING 3' FROM THE TOP AND BACK FILLED IT WITH DIRT TO THE TOP. DRILL TIME WAS 1 HOUR.

ON APRIL 1, 2015, WE DRILLED AN ADDITIONAL 2' ON THE ABOVE WELL FOR A TOTAL OF 12' DRILLED SO FAR. DRILL TIME WAS 1 HOUR.

ON APRIL 20, 2015, WE DRILLED AN ADDITIONAL 2' ON THE ABOVE WELL FOR A TOTAL OF 14' DRILLED SO FAR. DRILL TIME WAS 1 HOUR.

ON MAY 7, 2015, WE DRILLED AN ADDITIONAL 2' ON THE ABOVE WELL FOR A TOTAL OF 16' DRILLED SO FAR. DRILL TIME WAS 1 HOUR.

ON MAY 22, 2015, WE DRILLED AN ADDITIONAL 2' ON THE ABOVE WELL FOR A TOTAL OF 18' DRILLED SO FAR. DRILL TIME WAS 1 HOUR.

ON JUNE 10, 2015, WE DRILLED AN ADDITIONAL 2' ON THE ABOVE WELL FOR A TOTAL OF 20' DRILLED SO FAR. DRILL TIME WAS 1 HOUR.

PLEASE LET ME KNOW IF YOU HAVE ANY QUESTIONS.

REGARDS,

LEE SELLERS  
DRILLING SERVICES COORDINATOR

**BRHAS.com**

**Kansas • New Mexico • North Dakota  
Oklahoma • Pennsylvania • Texas**

**1 (888) 400-6294**