

HOBBS OCD

OCT 01 2015

District I  
1625 N. French Dr., Hobbs, NM 88240  
Phone: (575) 393-6161 Fax: (575) 393-0720

District II  
811 S. First St., Artesia, NM 88210  
Phone: (575) 748-1283 Fax: (575) 748-9720

District III  
1000 Rio Brazos Road, Arree, NM 87410  
Phone: (505) 334-6178 Fax: (505) 334-6170

District IV  
1220 S. St. Francis Dr., Santa Fe, NM 87505  
Phone: (505) 476-3460 Fax: (505) 476-3462

State of New Mexico  
Energy, Minerals & Natural Resources Department **RECEIVED**  
OIL CONSERVATION DIVISION  
1220 South St. Francis Dr.  
Santa Fe, NM 87505

Form C-102

Revised August 1, 2011

Submit one copy to appropriate

District Office

☐ AMENDED REPORT

## WELL LOCATION AND ACREAGE DEDICATION PLAT

<sup>1</sup> API Number <b>30-025-42832</b>		<sup>2</sup> Pool Code 98117		<sup>3</sup> Pool Name WC-025 G-09 S263504N; WOLFCAMP	
<sup>4</sup> Property Code <b>315295</b>		<sup>5</sup> Property Name <b>BIG JAY 4 FED</b>			<sup>6</sup> Well Number <b>1H</b>
<sup>7</sup> OGRID No. 6137		<sup>8</sup> Operator Name <b>DEVON ENERGY PRODUCTION COMPANY, L.P.</b>			<sup>9</sup> Elevation 3198.8

<sup>10</sup> Surface Location									
UL or lot no. <b>N</b>	Section <b>4</b>	Township <b>26 S</b>	Range <b>35 E</b>	Lot Idn	Feet from the <b>200</b>	North/South line <b>SOUTH</b>	Feet from the <b>1980</b>	East/West line <b>WEST</b>	County <b>LEA</b>

<sup>11</sup> Bottom Hole Location If Different From Surface									
UL or lot no. <b>C</b>	Section <b>4</b>	Township <b>26 S</b>	Range <b>35 E</b>	Lot Idn	Feet from the <b>330</b>	North/South line <b>NORTH</b>	Feet from the <b>1980</b>	East/West line <b>WEST</b>	County <b>LEA</b>

<sup>12</sup> Dedicated Acres <b>160</b>	<sup>13</sup> Joint or Infill	<sup>14</sup> Consolidation Code	<sup>15</sup> Order No.
---	-------------------------------	----------------------------------	-------------------------

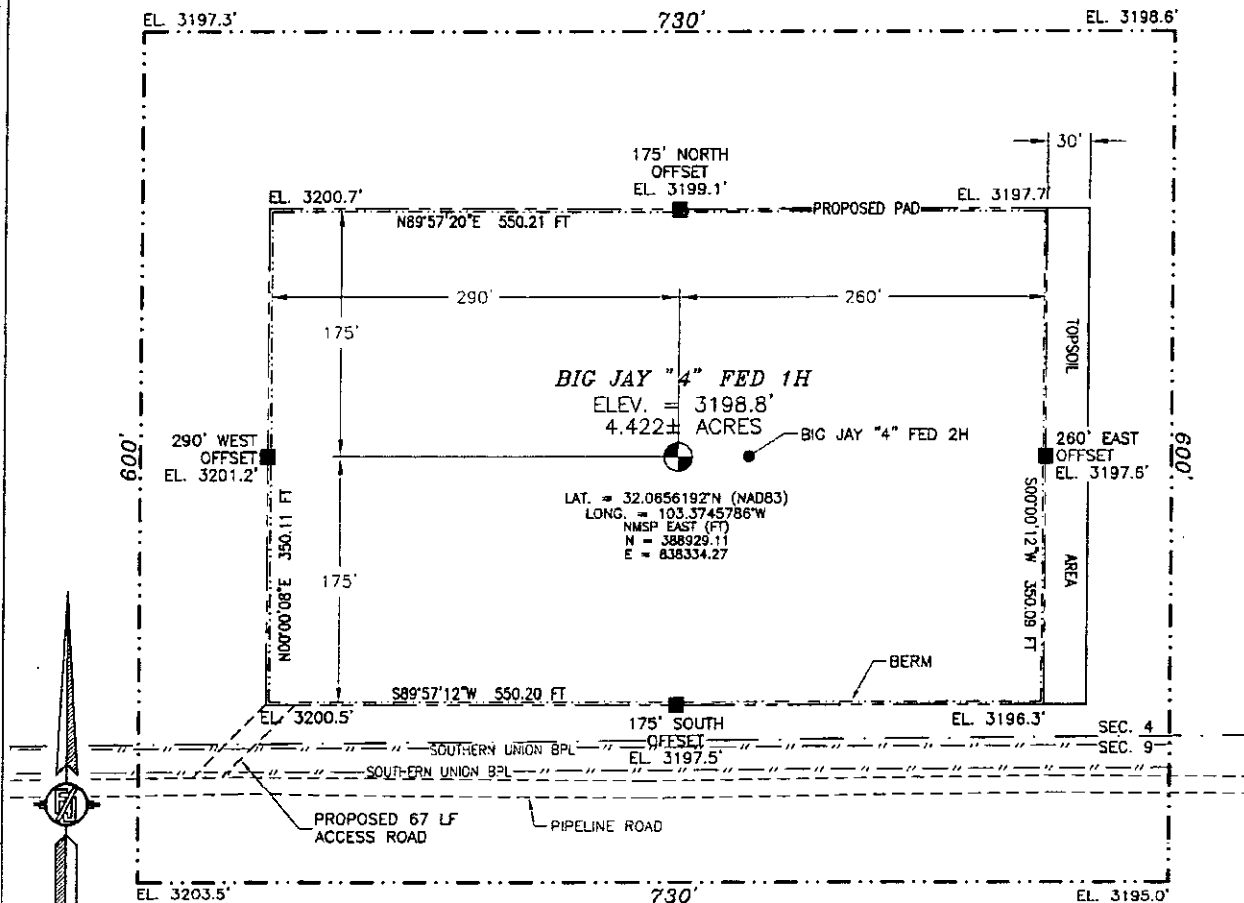
No allowable will be assigned to this completion until all interests have been consolidated or a non-standard unit has been approved by the division.

<p>N89°33'16"E 2643.49 FT</p> <p>N89°31'04"E 2642.23 FT</p> <p>NW CORNER SEC. 4 LAT. = 32.0795835°N LONG. = 103.3809855°W NMSP EAST (FT) N = 393895.29 E = 836304.61</p> <p>NE CORNER SEC. 4 LAT. = 32.0795817°N LONG. = 103.3639234°W NMSP EAST (FT) N = 394038.09 E = 841589.44</p> <p>W O CORNER SEC. 4 LAT. = 32.0723252°N LONG. = 103.3809717°W NMSP EAST (FT) N = 391351.16 E = 836332.24</p> <p>E O CORNER SEC. 4 LAT. = 32.0723197°N LONG. = 103.3639176°W NMSP EAST (FT) N = 391396.22 E = 841614.98</p> <p>SW CORNER SEC. 4 LAT. = 32.0650684°N LONG. = 103.3809683°W NMSP EAST (FT) N = 388711.20 E = 836356.45</p> <p>SE CORNER SEC. 4 LAT. = 32.0650605°N LONG. = 103.3639054°W NMSP EAST (FT) N = 388755.40 E = 841642.49</p> <p><b>BIG JAY "4" FED 1H</b> ELEV. = 3198.8' LAT. = 32.0656192°N (NAD83) LONG. = 103.3745786°W NMSP EAST (FT) N = 388929.11 E = 838334.27</p> <p><b>NOTE:</b> LATITUDE AND LONGITUDE COORDINATES ARE SHOWN USING THE NORTH AMERICAN DATUM OF 1983 (NAD83). LISTED NEW MEXICO STATE PLANE EAST COORDINATES ARE GRID (NAD83). BASIS OF BEARING AND DISTANCES USED ARE NEW MEXICO STATE PLANE EAST COORDINATES MODIFIED TO THE SURFACE.</p>		<p><sup>17</sup> OPERATOR CERTIFICATION</p> <p>I hereby certify that the information contained herein is true and complete to the best of my knowledge and belief, and that this organization either owns a working interest or undivided mineral interest in the land including the proposed bottom hole location or has a right to drill this well at this location pursuant to a contract with an owner of such a mineral or working interest, or to a voluntary pooling agreement or a compulsory pooling order heretofore entered by the division.</p> <p>Signature: <i>[Signature]</i> Date: 1/23/2015</p> <p>Printed Name: David H. Cook Regulatory Specialist</p> <p>E-mail Address: david.cook@dmn.com</p>
<p><b>18 SURVEYOR CERTIFICATION</b></p> <p>I hereby certify that the well location shown on this plat was plotted from field notes of actual surveys made by me or under my supervision and that the same are true and correct to the best of my belief.</p> <p>DECEMBER 11, 2014</p> <p>Date of Survey: <i>[Signature]</i></p> <p>Signature and Seal of Professional Surveyor: <i>[Signature]</i></p> <p>Certificate Number: FILMON F. JARAMILLO, PLS 12797</p> <p>SURVEY NO. 3473</p>		

SECTION 4, TOWNSHIP 26 SOUTH, RANGE 35 EAST, N.M.P.M.  
LEA COUNTY, STATE OF NEW MEXICO

SITE MAP

NOTE: LATITUDE AND LONGITUDE COORDINATES ARE SHOWN USING THE NORTH AMERICAN DATUM OF 1983 (NAD83). LISTED NEW MEXICO STATE PLANE EAST COORDINATES ARE GRID (NAD83). BASIS OF BEARING AND DISTANCES USED ARE NEW MEXICO STATE PLANE EAST COORDINATES MODIFIED TO THE SURFACE



0 12 60 120 240

SCALE 1" = 120'

DIRECTIONS TO LOCATION

FROM THE INTERSECTION OF STATE HIGHWAY 128 AND CR 2 (BATTLE AXE ROAD) GO SOUTH AND WEST ON CR 2 FOR APPROX. 12.2 MILES TO A LEASE ROAD ON LEFT (SOUTH). TURN SOUTH ON LEASE ROAD GO APPROX. 0.8 OF A MILE TO PIPELINE ROAD, TURN LEFT (EAST) GO LEFT ON PIPELINE ROAD FOR APPROX. 9.4 MILES TO ROAD LATH WITH RED & WHITE FLAGGING ON LEFT (NORTH) OF PIPELINE ROAD. GO NORTHEAST APPROX. 67' TO THE SOUTHWEST CORNER FOR THIS LOCATION.

DEVON ENERGY PRODUCTION COMPANY, L.P.

BIG JAY "4" FED 1H

LOCATED 200 FT. FROM THE SOUTH LINE  
AND 1980 FT. FROM THE WEST LINE OF  
SECTION 4, TOWNSHIP 26 SOUTH,  
RANGE 35 EAST, N.M.P.M.

LEA COUNTY, STATE OF NEW MEXICO

DECEMBER 11, 2014

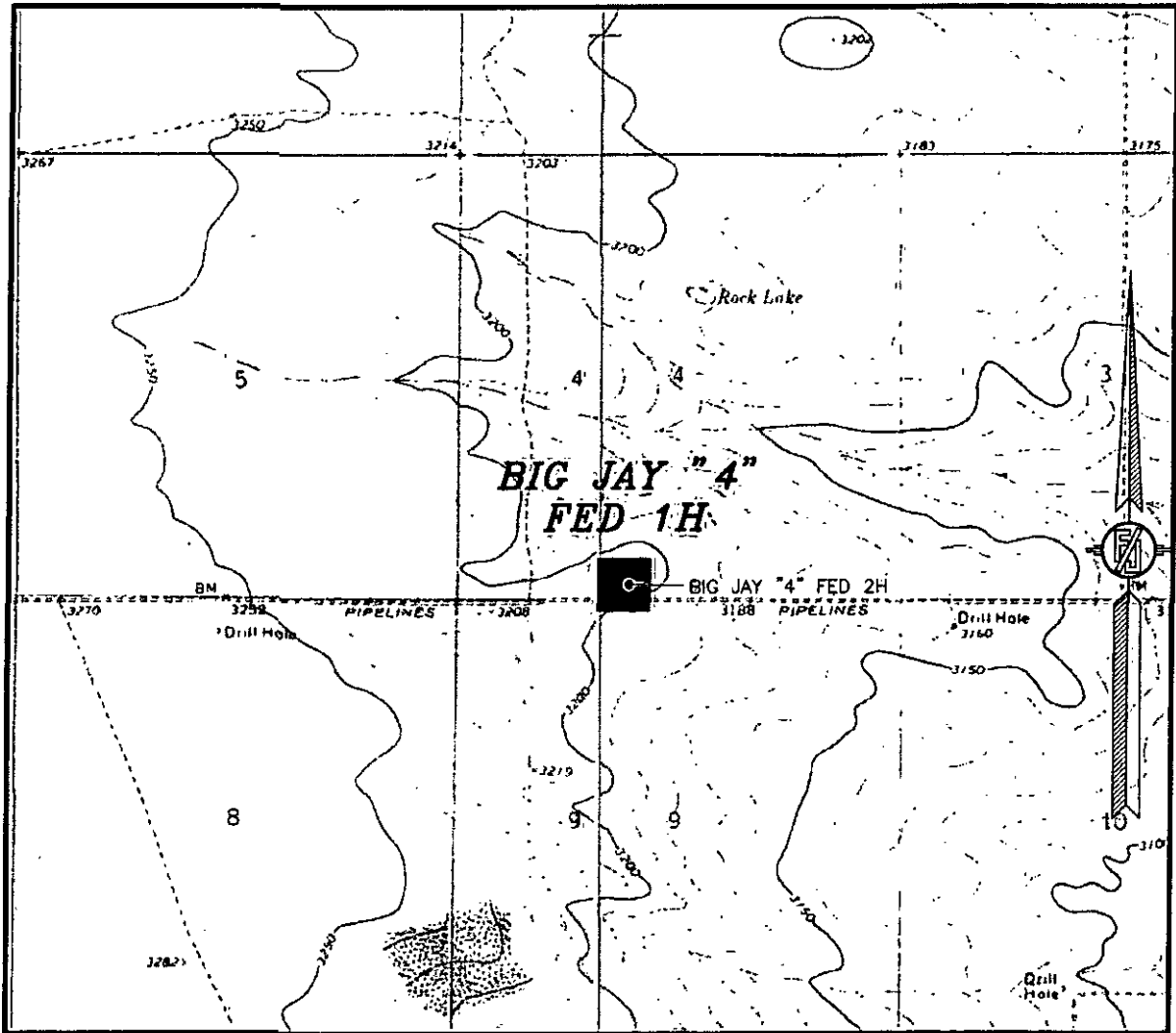
SURVEY NO. 3473

MADRON SURVEYING, INC.

301 SOUTH CANAL  
(575) 234-3341

CARLSBAD, NEW MEXICO

SECTION 4, TOWNSHIP 26 SOUTH, RANGE 35 EAST, N.M.P.M.  
LEA COUNTY, STATE OF NEW MEXICO  
LOCATION VERIFICATION MAP



USGS QUAD MAP:  
JAVELINA BASIN

NOT TO SCALE

DEVON ENERGY PRODUCTION COMPANY, L.P.

**BIG JAY "4" FED 1H**

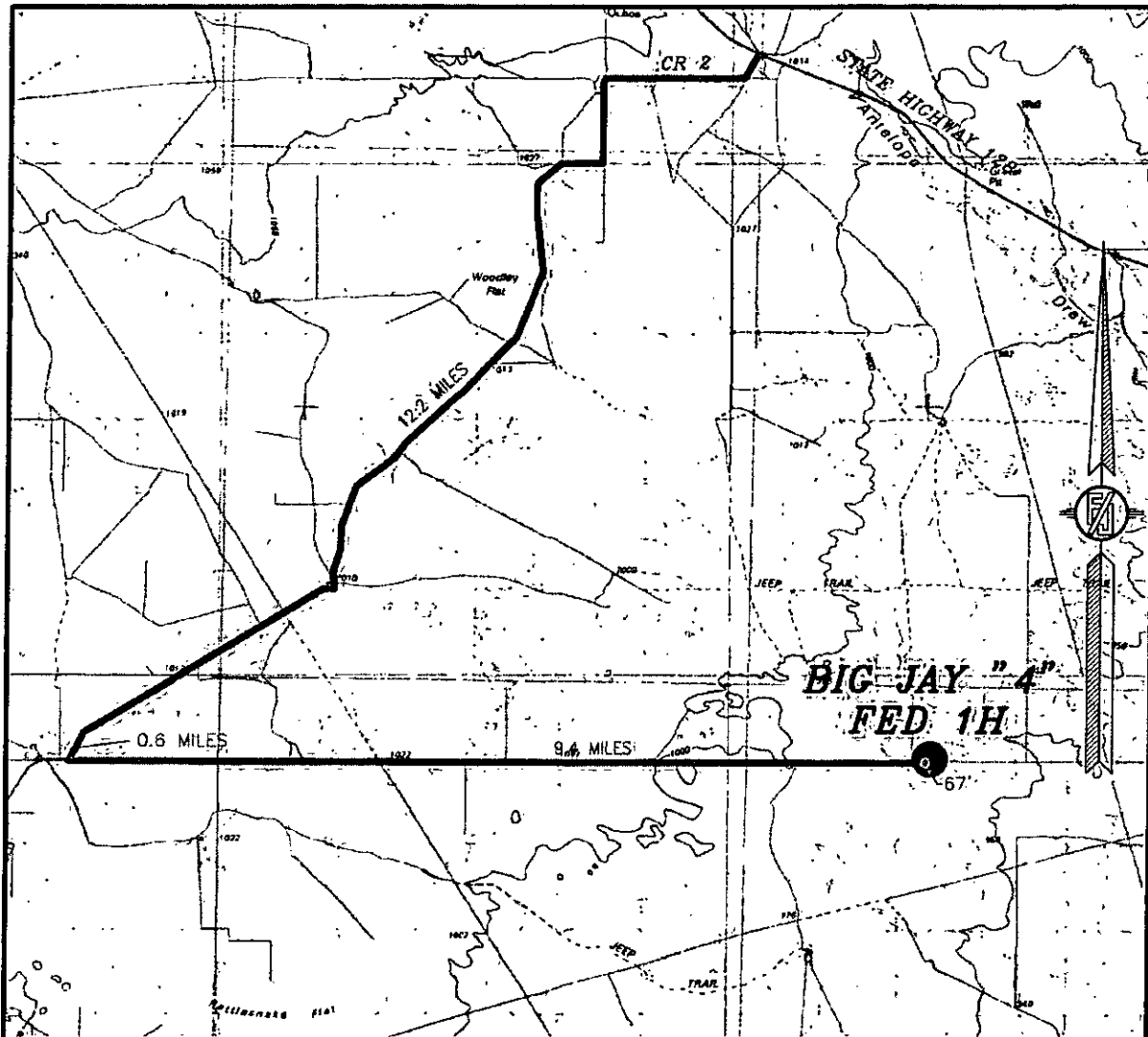
LOCATED 200 FT. FROM THE SOUTH LINE  
AND 1980 FT. FROM THE WEST LINE OF  
SECTION 4, TOWNSHIP 26 SOUTH,  
RANGE 35 EAST, N.M.P.M.  
LEA COUNTY, STATE OF NEW MEXICO

DECEMBER 11, 2014

SURVEY NO. 3473

MADRON SURVEYING, INC. 3011 SOUTH CANAL CARLSBAD, NEW MEXICO  
(575) 234-3341

SECTION 4, TOWNSHIP 26 SOUTH, RANGE 35 EAST, N.M.P.M.  
LEA COUNTY, STATE OF NEW MEXICO  
VICINITY MAP



DISTANCES IN MILES

NOT TO SCALE

DEVON ENERGY PRODUCTION COMPANY, L.P.

**BIG JAY "4" FED 1H**

LOCATED 200 FT. FROM THE SOUTH LINE  
AND 1980 FT. FROM THE WEST LINE OF

SECTION 4, TOWNSHIP 26 SOUTH,  
RANGE 35 EAST, N.M.P.M.  
LEA COUNTY, STATE OF NEW MEXICO

DECEMBER 11, 2014

**DIRECTIONS TO LOCATION**

FROM THE INTERSECTION OF STATE HIGHWAY 128 AND CR 2 (BATTLE AXE ROAD) GO SOUTH AND WEST ON CR 2 FOR APPROX. 12.2 MILES TO A LEASE ROAD ON LEFT (SOUTH). TURN SOUTH ON LEASE ROAD GO APPROX. 0.6 OF A MILE TO PIPELINE ROAD, TURN LEFT (EAST). GO LEFT ON PIPELINE ROAD FOR APPROX. 9.4 MILES TO ROAD LATH WITH RED & WHITE FLAGGING ON LEFT (NORTH) OF PIPELINE ROAD. GO NORTHEAST APPROX. 87' TO THE SOUTHWEST CORNER FOR THIS LOCATION.

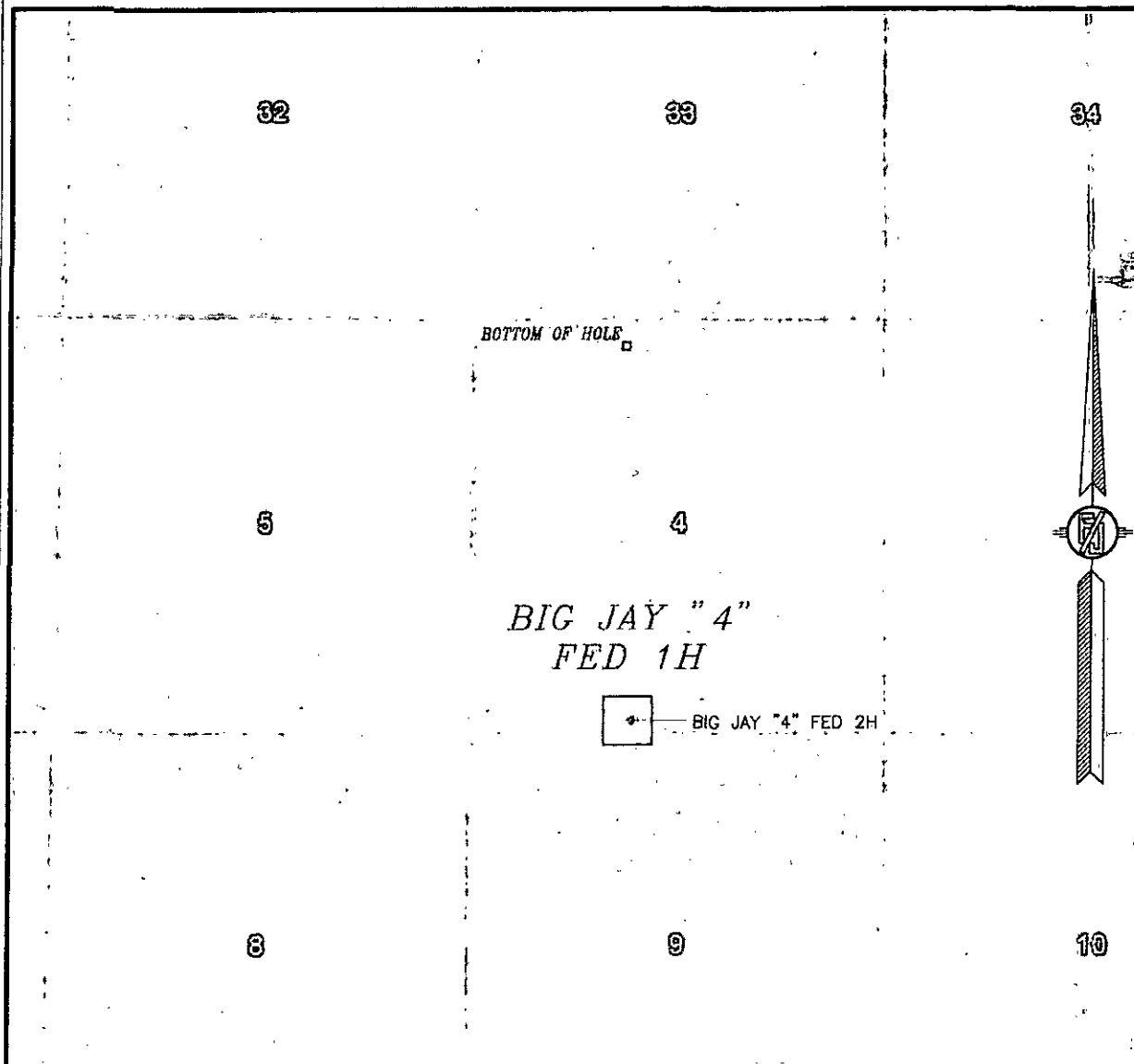
SURVEY NO. 3473

MADRON SURVEYING, INC. 301 SOUTH CANAL (575) 234-3341 CARLSBAD, NEW MEXICO

SECTION 4, TOWNSHIP 26 SOUTH, RANGE 35 EAST, N.M.P.M.

LEA COUNTY, STATE OF NEW MEXICO

# AERIAL PHOTO



NOT TO SCALE  
AERIAL PHOTO:  
GOOGLE EARTH  
APRIL 2013

DEVON ENERGY PRODUCTION COMPANY, L.P.

## BIG JAY "4" FED 1H

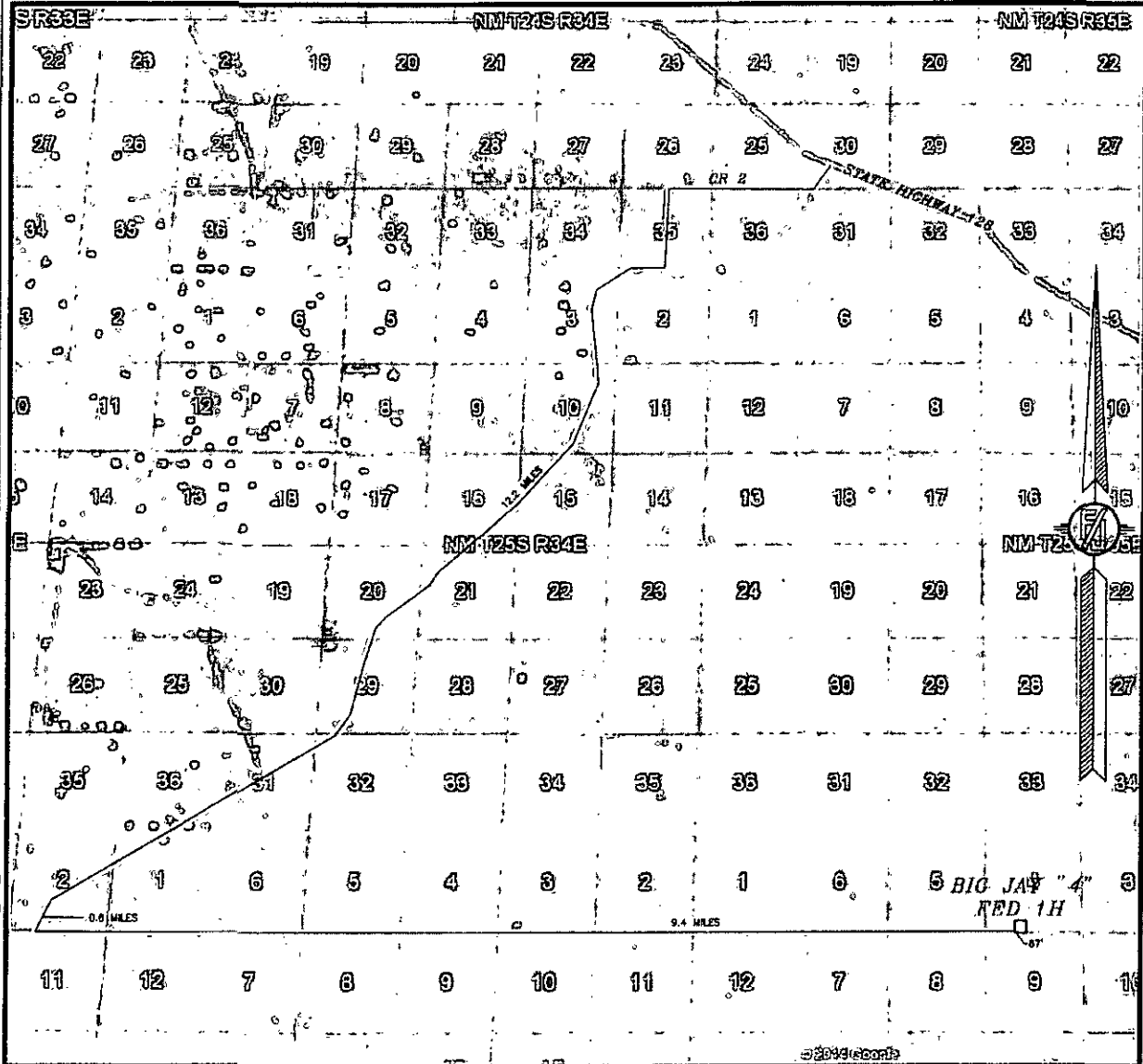
LOCATED 200 FT. FROM THE SOUTH LINE  
AND 1980 FT. FROM THE WEST LINE OF  
SECTION 4, TOWNSHIP 26 SOUTH,  
RANGE 35 EAST, N.M.P.M.  
LEA COUNTY, STATE OF NEW MEXICO

DECEMBER 11, 2014

SURVEY NO. 3473

MADRON SURVEYING, INC. 301 SOUTH CANAL CARLSBAD, NEW MEXICO  
(575) 234-3341

SECTION 4, TOWNSHIP 26 SOUTH, RANGE 35 EAST, N.M.P.M.  
LEA COUNTY, STATE OF NEW MEXICO  
ACCESS AERIAL ROUTE MAP



NOT TO SCALE  
AERIAL PHOTO:  
GOOGLE EARTH  
APRIL 2013

DEVON ENERGY PRODUCTION COMPANY, L.P.

**BIG JAY "4" FED 1H**

LOCATED 200 FT. FROM THE SOUTH LINE  
AND 1980 FT. FROM THE WEST LINE OF  
SECTION 4, TOWNSHIP 26 SOUTH,  
RANGE 35 EAST, N.M.P.M.  
LEA COUNTY, STATE OF NEW MEXICO

DECEMBER 11, 2014

SURVEY NO. 3473

MADRON SURVEYING, INC. 301 SOUTH CANAL CARLSBAD, NEW MEXICO  
(575) 234-3341

