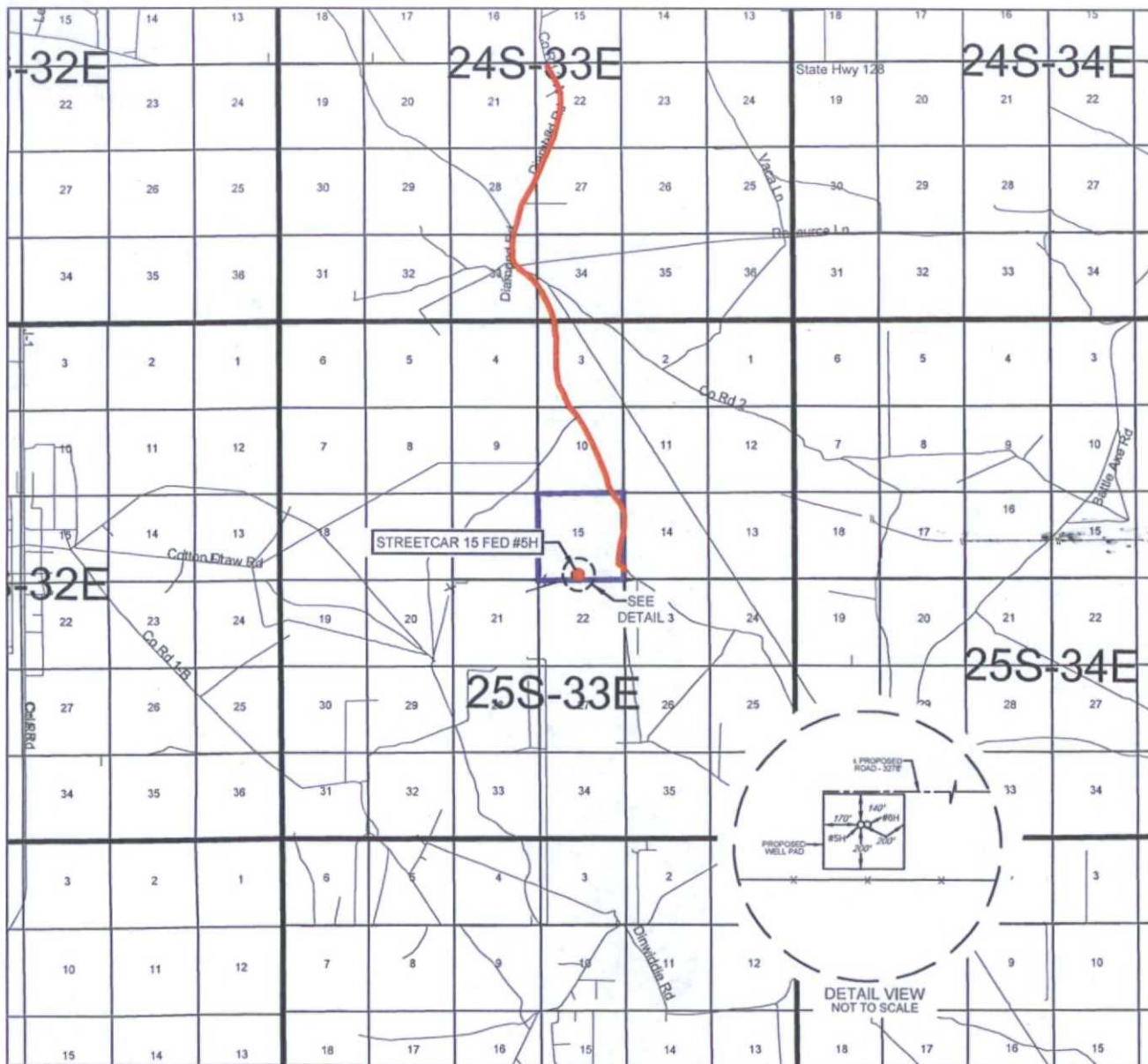


OCT 19 2015

EXHIBIT 2
VICINITY MAP



LEASE NAME & WELL NO.: STREETCAR 15 FED #5H

SECTION 15 TWP 25-S RGE 33-E SURVEY N.M.P.M.

COUNTY LEA STATE NM

DESCRIPTION -250 FSL & 2215 FWL

DISTANCE & DIRECTION

FROM INT. OF NM-18 N & NM-128. GO WEST ON NM-128 W +23.9 MILES, THENCE SOUTH (LEFT) ON DIAMOND RD./J-2 ±2.5 MILES, THENCE SOUTHEAST (LEFT) ON CR. 2 ±0.2 MILE, THENCE SOUTH (RIGHT) ON LEASE RD. ±2.8 MILES, THENCE SOUTH (RIGHT) ±305 FEET ON LEASE RD., THENCE WEST (RIGHT) ON PROPOSED RD. 3278 FEET TO A POINT NORTH OF THE LOCATION.

THIS EASEMENT/SERVITUDE LOCATION SHOWN HEREON HAS BEEN SURVEYED ON THE GROUND UNDER MY SUPERVISION AND PREPARED ACCORDING TO THE EVIDENCE FOUND AT THE TIME OF SURVEY, AND DATA PROVIDED BY EOG RESOURCES, INC. THIS CERTIFICATION IS MADE AND LIMITED TO THOSE PERSONS OR ENTITIES SHOWN ON THE FACE OF THIS PLAT AND IS NON-TRANSFERABLE. THIS SURVEY IS CERTIFIED FOR THIS TRANSACTION ONLY.

ALL BEARINGS, DISTANCES, AND COORDINATE VALUES CONTAINED HEREON ARE GRID BASED UPON THE NEW MEXICO STATE PLANE COORDINATE SYSTEM, EAST ZONE OF THE NORTH AMERICAN DATUM 1927, U.S. SURVEY FEET.

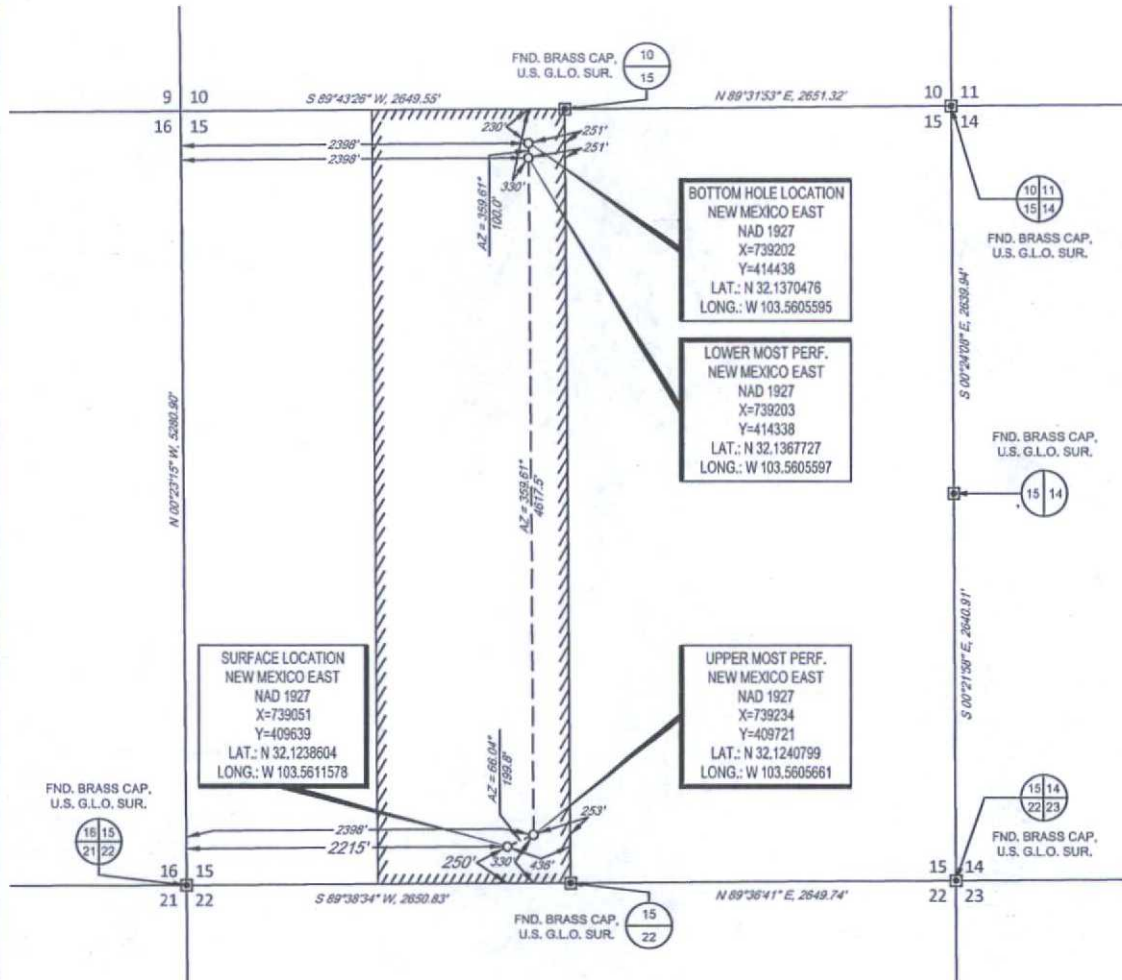


1400 EVERMAN PARKWAY, Ste. 197 • FT. WORTH, TEXAS 76149
TELEPHONE: (817) 744-7512 • FAX (817) 744-7548
2903 NORTH BIG SPRING • MIDLAND, TEXAS 79705
TELEPHONE: (432) 682-1653 OR (800) 767-1653 • FAX (432) 682-1743
WWW.TOPOGRAPHIC.COM



EXHIBIT 2A

SECTION 15, TOWNSHIP 25-S, RANGE 33-E, N.M.P.M.
LEA COUNTY, NEW MEXICO



LEASE NAME & WELL NO.:

STREETCAR 15 FED #5H

SECTION 15 TWP 25-S RGE 33-E SURVEY N.M.P.M.

COUNTY LEA STATE NM

DESCRIPTION 250 FSL & 2215 FWL

DISTANCE & DIRECTION

FROM INT. OF NM-18 N & NM-128, GO WEST ON NM-128 W+23.9 MILES.
THENCE SOUTH (LEFT) ON DIAMOND RD./I-2 +2.5 MILES. THENCE
SOUTHEAST (LEFT) ON CR. 2 +0.2 MILE. THENCE SOUTH (RIGHT) ON
LEASE RD. +2.8 MILES. THENCE SOUTH (RIGHT) +305 FEET ON LEASE
RD., THENCE WEST (RIGHT) ON PROPOSED RD. 3278 FEET TO A POINT
NORTH OF THE LOCATION.

ALL BEARINGS, DISTANCES, AND COORDINATE VALUES CONTAINED HEREON ARE GRID
BASED UPON THE NEW MEXICO STATE PLANE COORDINATE SYSTEM, EAST ZONE OF THE
NORTH AMERICAN DATUM 1927, U.S. SURVEY FEET

THIS EASEMENT/SERVITUDE LOCATION SHOWN HEREON HAS BEEN SURVEYED ON THE GROUND
UNDER MY SUPERVISION AND PREPARED ACCORDING TO THE EVIDENCE FOUND AT THE TIME OF
SURVEY, AND DATA PROVIDED BY EOG RESOURCES, INC. THIS CERTIFICATION IS MADE AND LIMITED
TO THOSE PERSONS OR ENTITIES SHOWN ON THE FACE OF THIS PLAT AND IS NON-TRANSFERABLE.
THIS SURVEY IS CERTIFIED FOR THIS TRANSACTION ONLY.



DETAIL VIEW
SCALE: 1" = 500'



Michael Blake Brown, P.S. No. 18329

JANUARY 8, 2015



TOPOGRAPHIC
LOYALTY INNOVATION LEGACY

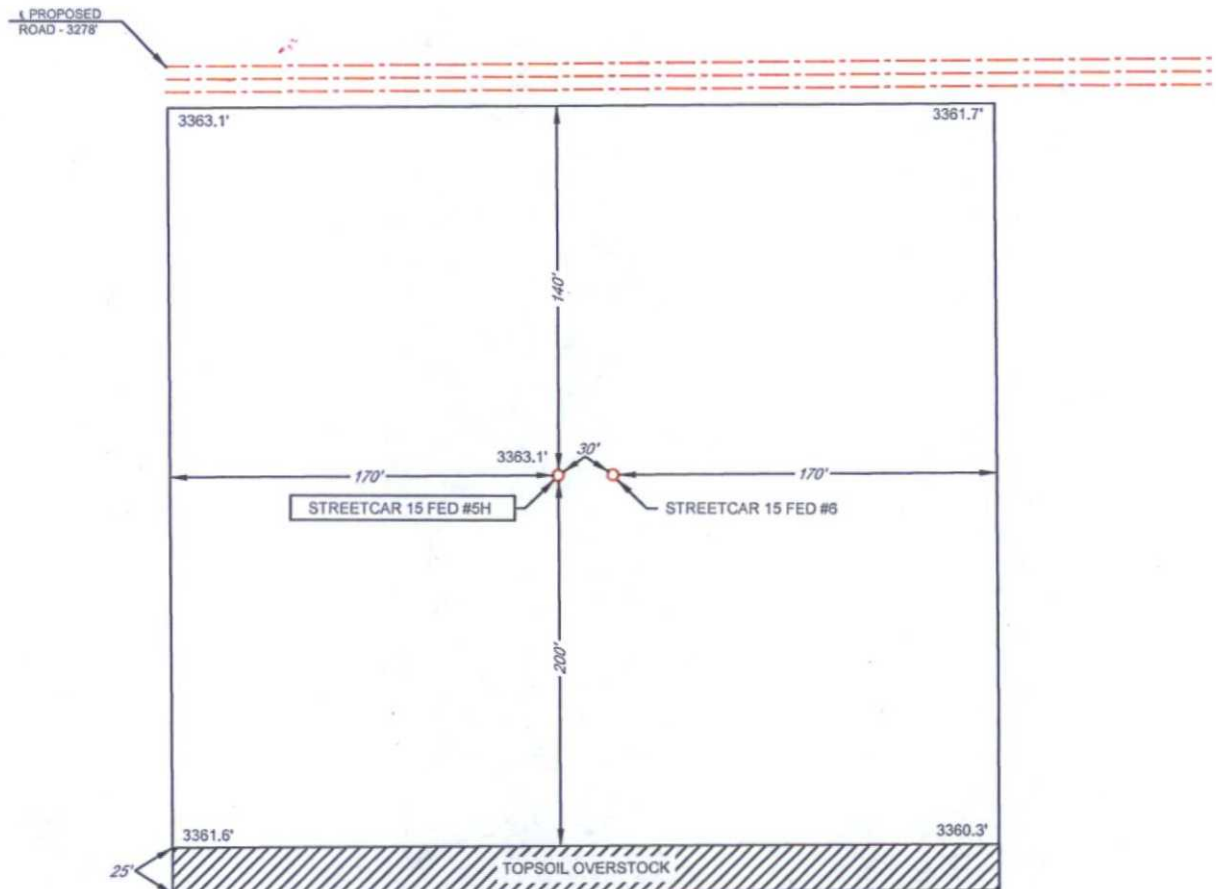
1400 EVERMAN PARKWAY, Ste. 187 - FT. WORTH, TEXAS 76140
TELEPHONE: (817) 744-7512 - FAX: (817) 744-7548
2903 NORTH BIG SPRING - MIDLAND, TEXAS 79705
TELEPHONE: (432) 682-1653 OR (800) 767-1653 - FAX: (432) 682-1743
WWW.TOPOGRAPHIC.COM



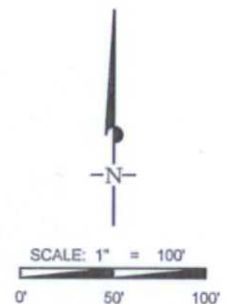
EXHIBIT 2B

SECTION 15, TOWNSHIP 25-S, RANGE 33-E, N.M.P.M.
LEA COUNTY, NEW MEXICO

DETAIL VIEW
SCALE: 1" = 100'



LEASE NAME & WELL NO.: STREETCAR 15 FED #5H
#5H LATITUDE N 32.1238604 #5H LONGITUDE W 103.5611578



ALL BEARINGS, DISTANCES, AND COORDINATE VALUES CONTAINED HEREON ARE GRID BASED UPON THE NEW MEXICO STATE PLANE COORDINATE SYSTEM, EAST ZONE OF THE NORTH AMERICAN DATUM 1927, U.S. SURVEY FEET

THIS PROPOSED PAD SITE LOCATION SHOWN HEREON HAS BEEN SURVEYED ON THE GROUND UNDER MY SUPERVISION AND PREPARED ACCORDING TO THE EVIDENCE FOUND AT THE TIME OF SURVEY, AND DATA PROVIDED BY EOG RESOURCES, INC. THIS CERTIFICATION IS MADE AND LIMITED TO THOSE PERSONS OR ENTITIES SHOWN ON THE FACE OF THIS PLAT AND IS NON-TRANSFERABLE. THIS SURVEY IS CERTIFIED FOR THIS TRANSACTION ONLY.



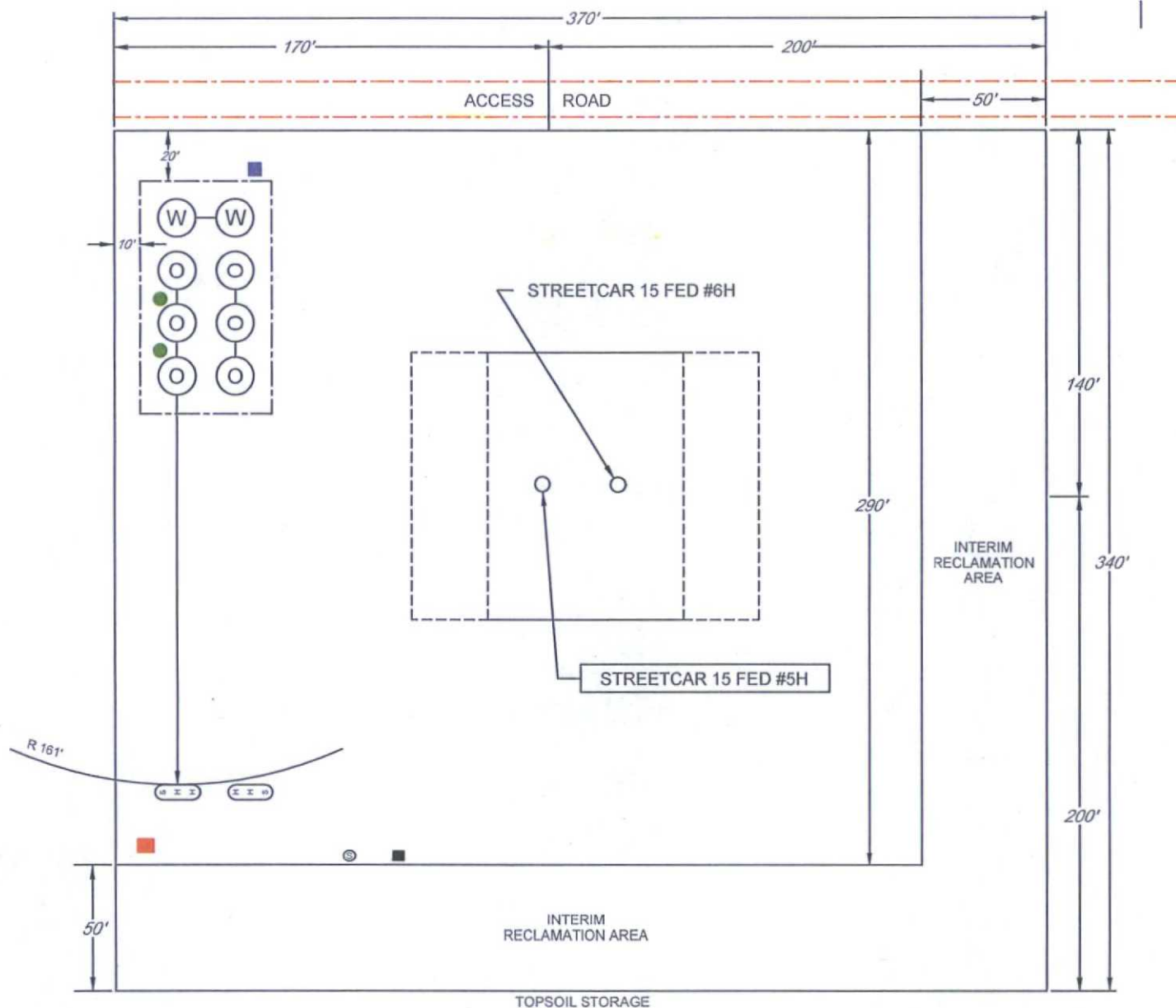
1400 EVERMAN PARKWAY, Ste. 197 • FT. WORTH, TEXAS 76140
TELEPHONE: (817) 744-7512 • FAX (817) 744-7548
2903 NORTH BIG SPRING • MIDLAND, TEXAS 79705
TELEPHONE: (432) 682-1653 OR (800) 767-1653 • FAX (432) 682-1743
WWW.TOPOGRAPHIC.COM

EXHIBIT 2C

RECLAMATION AND FACILITY DIAGRAM - PRODUCTION FACILITIES DIAGRAM

SECTION 15, TOWNSHIP 25-S, RANGE 33-E, N.M.P.M.
LEA COUNTY, NEW MEXICO

DETAIL VIEW
SCALE: 1" = 60'



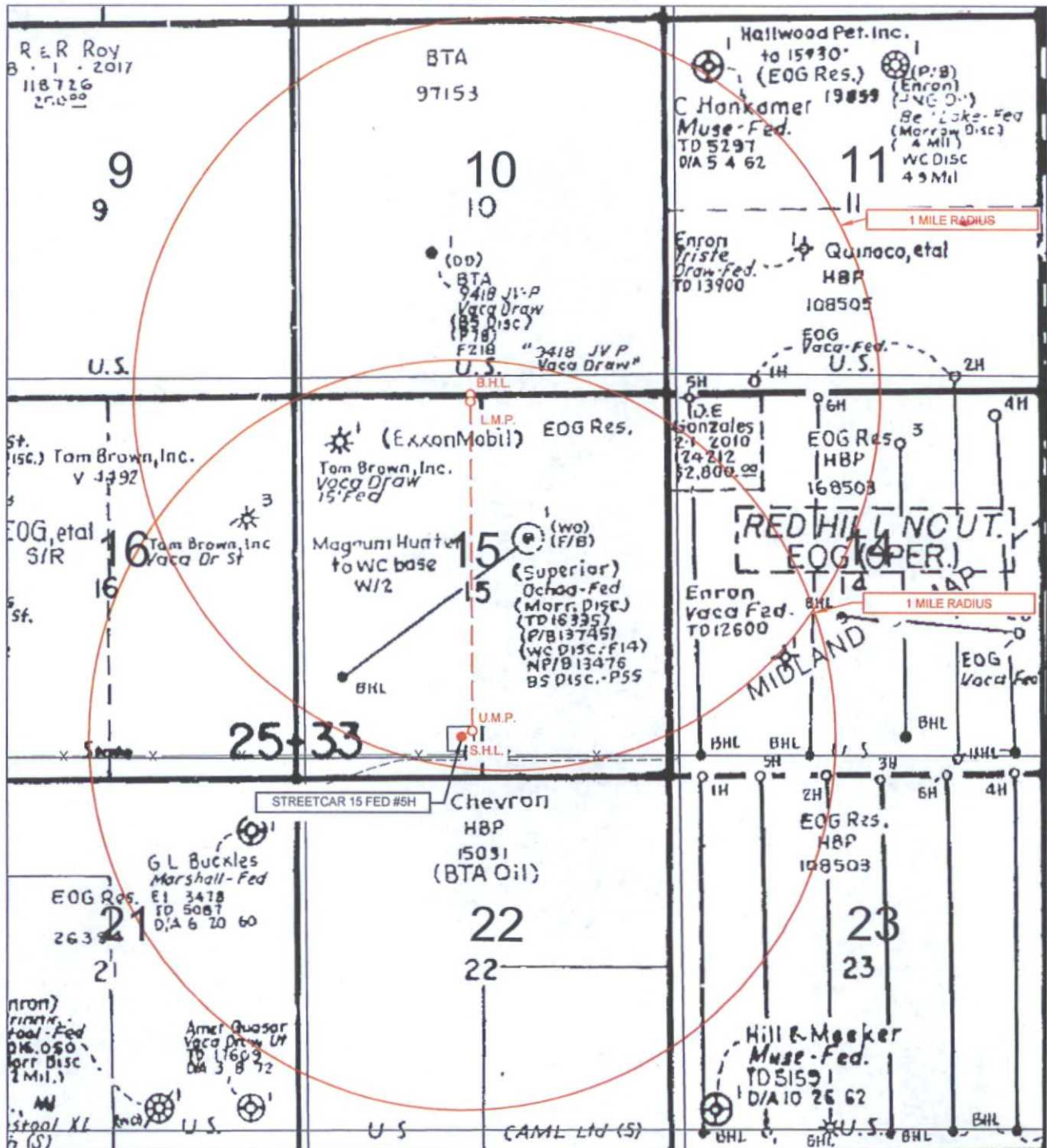
LEASE NAME & WELL NO.: STREETCAR 15 FED #5H
#5H LATITUDE N 32.1238604 #5H LONGITUDE W 103.5611578

LEGEND

(O)	500 BBL OIL TANK	(S)	FLARE SEPARATOR
(W)	500 BBL WATER TANK	(F)	VRU
(H)	36 x 15 HEATER/SEPARATOR	(G)	48 X 25 VRT
		(R)	FP FLARE
		(B)	OP FLARE

EXHIBIT 3

SECTION 15, TOWNSHIP 25-S, RANGE 33-E, N.M.P.M.
LEA COUNTY, NEW MEXICO



LEASE NAME & WELL NO.: STREETCAR 15 FED #5H

SCALE: NTS

#5H LATITUDE N 32.1238604

#5H LONGITUDE W 103.5611578

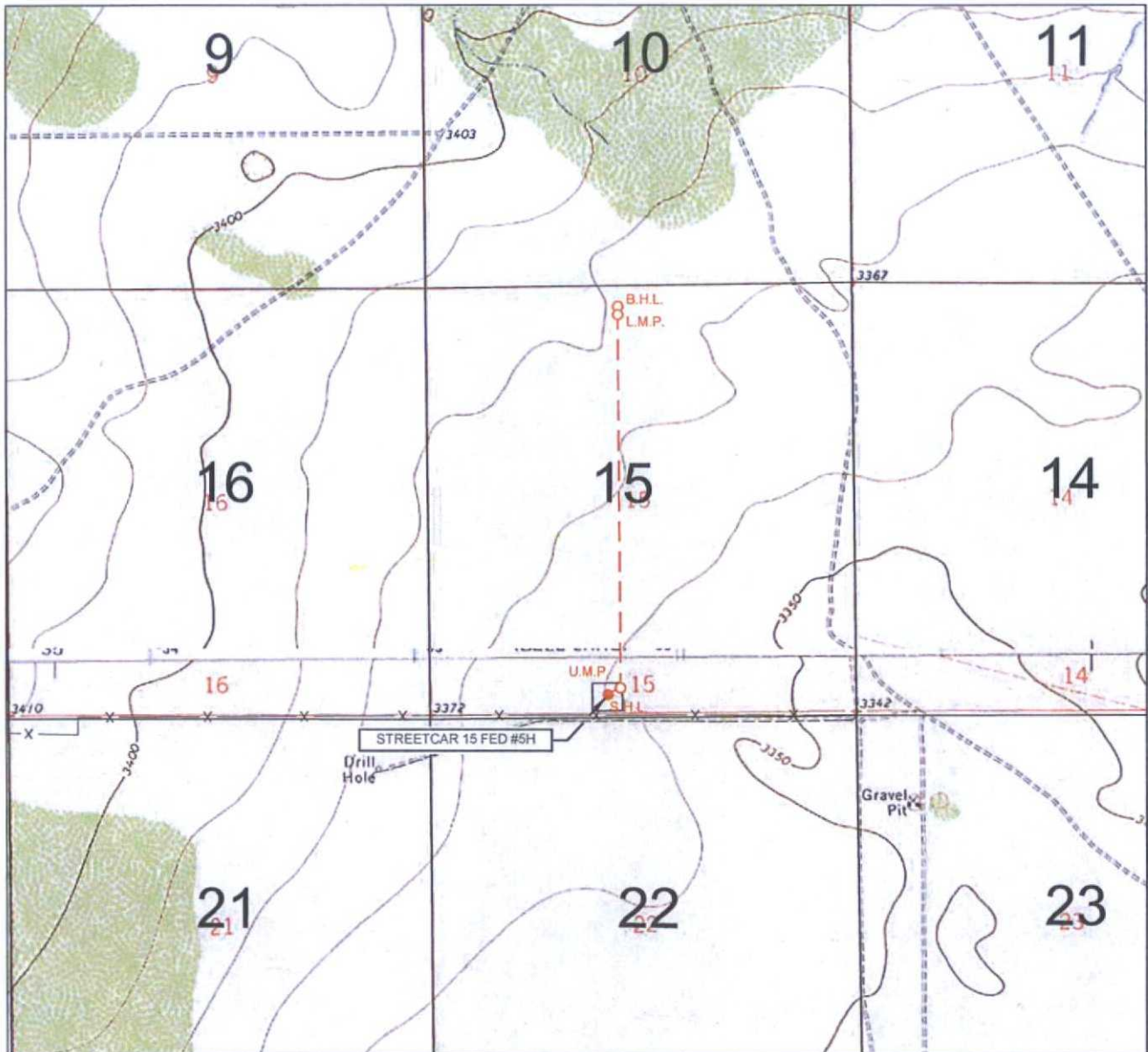
ALL BEARINGS, DISTANCES, AND COORDINATE VALUES CONTAINED HEREON ARE GRID BASED UPON THE NEW MEXICO STATE PLANE COORDINATE SYSTEM, EAST ZONE OF THE NORTH AMERICAN DATUM 1927, U.S. SURVEY FEET

THIS EASEMENT/SERVITUDE LOCATION SHOWN HEREON HAS BEEN SURVEYED ON THE GROUND UNDER MY SUPERVISION AND PREPARED ACCORDING TO THE EVIDENCE FOUND AT THE TIME OF SURVEY, AND DATA PROVIDED BY EOG RESOURCES, INC. THIS CERTIFICATION IS MADE AND LIMITED TO THOSE PERSONS OR ENTITIES SHOWN ON THE FACE OF THIS PLAT AND IS NON-TRANSFERABLE. THIS SURVEY IS CERTIFIED FOR THIS TRANSACTION ONLY.



1400 EVERMAN PARKWAY, Ste. 197 • FT. WORTH, TEXAS 76140
TELEPHONE: (817) 744-7512 • FAX: (817) 744-7548
2903 NORTH BIG SPRING • MIDLAND, TEXAS 79705
TELEPHONE: (432) 682-1653 OR (800) 787-1853 • FAX: (432) 682-1743
WWW.TOPOGRAPHIC.COM

LOCATION & ELEVATION VERIFICATION MAP



LEASE NAME & WELL NO.: STREETCAR 15 FED #5H

SECTION 15 TWP 25-S RGE 33-E SURVEY N.M.P.M.
 COUNTY LEA STATE NM ELEVATION 3363'
 DESCRIPTION 250 FSL & 2215 FWL

LATITUDE N 32.1238604 LONGITUDE W 103.5611578



SCALE: 1" = 2000'
 0' 1000' 2000'

THIS EASEMENT/SERVITUDE LOCATION SHOWN HEREON HAS BEEN SURVEYED ON THE GROUND UNDER MY SUPERVISION AND PREPARED ACCORDING TO THE EVIDENCE FOUND AT THE TIME OF SURVEY, AND DATA PROVIDED BY EOG RESOURCES, INC. THIS CERTIFICATION IS MADE AND LIMITED TO THOSE PERSONS OR ENTITIES SHOWN ON THE FACE OF THIS PLAT AND IS NON-TRANSFERABLE. THIS SURVEY IS CERTIFIED FOR THIS TRANSACTION ONLY.

ALL BEARINGS, DISTANCES, AND COORDINATE VALUES CONTAINED HEREON ARE GRID BASED UPON THE NEW MEXICO STATE PLANE COORDINATE SYSTEM, EAST ZONE OF THE NORTH AMERICAN DATUM 1927, U.S. SURVEY FEET.



TOPOGRAPHIC
 LOYALTY INNOVATION LEGACY

1400 EVERMAN PARKWAY, Ste. 197 • FT. WORTH, TEXAS 76140
 TELEPHONE: (817) 744-7512 • FAX (817) 744-7548
 2903 NORTH BIG SPRING • MIDLAND, TEXAS 79705
 TELEPHONE: (432) 682-1653 OR (800) 767-1653 • FAX (432) 682-1743
 WWW.TOPOGRAPHIC.COM

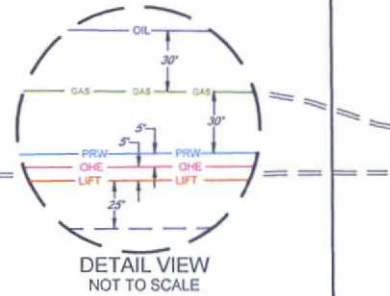
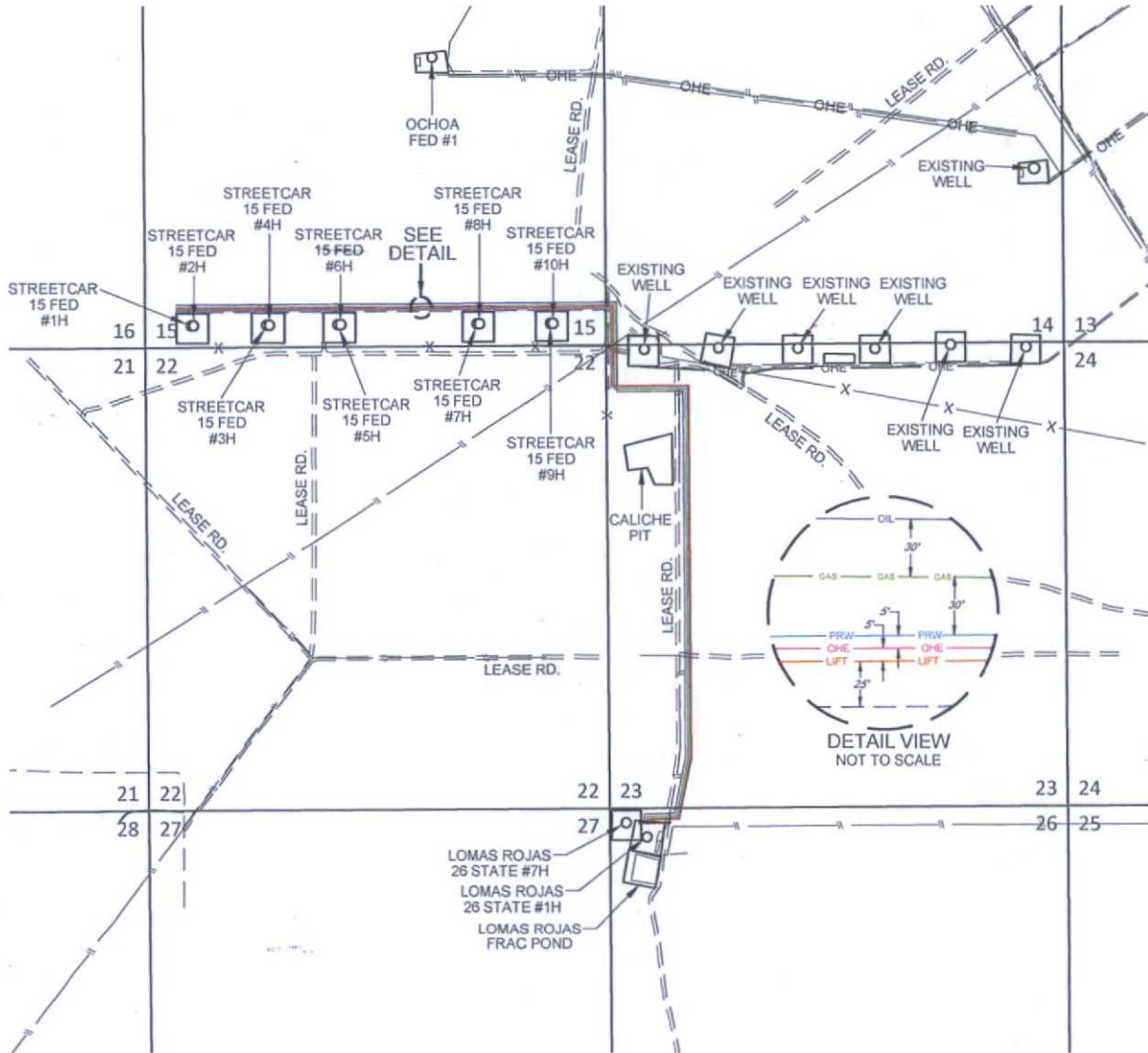
SCALE: 1" = 2000'

0' 1000' 2000'

EXHIBIT 5

SECTION 14, 15, 23, 26, TOWNSHIP 25-S, RANGE 33-E, N.M.P.M.
LEA COUNTY, NEW MEXICO

STREETCAR 15 FED #1H-#10H INFRASTRUCTURE MAP



LEASE RD.	4964 FT	ELECTRIC LINE	12089 FT
-TOTAL FOOTAGE		-TOTAL FOOTAGE	
FROM EXISTING LEASE RD. (SEC. 14)		-WORKING PRESSURE 75-125 PSI)	
TO STREETCAR 15 FED #1H & #2H	4964 FT	FROM LOMAS ROJAS 26 STATE #1H (SEC. 26)	
TO STREETCAR 15 FED #3H & #4H	4094 FT	TO STREETCAR 15 FED #1H & #2H	12089 FT
TO STREETCAR 15 FED #5H & #6H	3279 FT	TO STREETCAR 15 FED #3H & #4H	11219 FT
TO STREETCAR 15 FED #7H & #8H	1673 FT	TO STREETCAR 15 FED #5H & #6H	10404 FT
TO STREETCAR 15 FED #9H & #10H	833 FT	TO STREETCAR 15 FED #7H & #8H	8798 FT
		TO STREETCAR 15 FED #9H & #10H	7958 FT
8" PRODUCED WATERLINE	12089 FT	12" GAS SALES LINE	12091 FT
-TOTAL FOOTAGE		-TOTAL FOOTAGE	
-WORKING PRESSURE 75-125 PSI)		-WORKING PRESSURE 75-125 PSI)	
FROM LOMAS ROJAS 26 STATE #1H (SEC. 26)		FROM LOMAS ROJAS 26 STATE #1H (SEC. 26)	
TO STREETCAR 15 FED #1H & #2H	12089 FT	TO STREETCAR 15 FED #1H & #2H	12089 FT
TO STREETCAR 15 FED #3H & #4H	11219 FT	TO STREETCAR 15 FED #3H & #4H	11221 FT
TO STREETCAR 15 FED #5H & #6H	10404 FT	TO STREETCAR 15 FED #5H & #6H	10406 FT
TO STREETCAR 15 FED #7H & #8H	8798 FT	TO STREETCAR 15 FED #7H & #8H	8800 FT
TO STREETCAR 15 FED #9H & #10H	7958 FT	TO STREETCAR 15 FED #9H & #10H	7960 FT
8" GAS LIFT LINE	12089 FT	4" STEEL OIL SALES LINE (ITS OWN ROW BURIED)	12093 FT
-TOTAL FOOTAGE		-TOTAL FOOTAGE	
-WORKING PRESSURE 75-125 PSI)		-WORKING PRESSURE 75-125 PSI)	
FROM LOMAS ROJAS 26 STATE #1H (SEC. 26)		FROM LOMAS ROJAS 26 STATE #1H (SEC. 26)	
TO STREETCAR 15 FED #1H & #2H	12089 FT	TO STREETCAR 15 FED #1H & #2H	12089 FT
TO STREETCAR 15 FED #3H & #4H	11219 FT	TO STREETCAR 15 FED #3H & #4H	11223 FT
TO STREETCAR 15 FED #5H & #6H	10404 FT	TO STREETCAR 15 FED #5H & #6H	10408 FT
TO STREETCAR 15 FED #7H & #8H	8798 FT	TO STREETCAR 15 FED #7H & #8H	8803 FT
TO STREETCAR 15 FED #9H & #10H	7958 FT	TO STREETCAR 15 FED #9H & #10H	7963 FT



STREETCAR 15 FED #1H-#10H INFRASTRUCTURE MAP	
REVISION:	
INT	DATE
DATE:	01/13/15
FILE:	SK_STREETCAR15FED_1H-10H_INFRASTRUCTURE
DRAWN BY:	S.V.
SHEET:	1 OF 1