

DEC 30 2015

Form C-102

Revised August 1, 2011

Submit one copy to appropriate

District Office

☐ AMENDED REPORT

District I
1625 N. French Dr., Hobbs, NM 88240
Phone: (575) 393-6161 Fax: (575) 393-9720

District II
811 S. First St., Artesia, NM 88210
Phone: (575) 748-1283 Fax: (575) 748-9720

District III
1000 Rio Brazos Road, Aztec, NM 87410
Phone: (505) 334-6178 Fax: (505) 334-6170

District IV
1220 S. St. Francis Dr., Santa Fe, NM 87505
Phone: (505) 476-3460 Fax: (505) 476-3462

State of New Mexico
Energy, Minerals & Natural Resources Department
OIL CONSERVATION DIVISION
1220 South St. Francis Dr.
Santa Fe, NM 87505

WELL LOCATION AND ACREAGE DEDICATION PLAT

¹ API Number 30-025-	² Pool Code 97369 96434	³ Pool Name Red Hills; Bone Spring, East NORTH
⁴ Property Code 314105	⁵ Property Name TELECASTER BASS 36 STATE	⁶ Well Number 1H
⁷ OGRID No. 270329	⁸ Operator Name ENDURANCE RESOURCES, LLC	⁹ Elevation 3421.0

^m Surface Location

UL or lot no.	Section	Township	Range	Lot Idn	Feet from the	North/South line	Feet from the	East/West line	County
D	36	24 S	34 E		330	NORTH	425	WEST	LEA

" Bottom Hole Location If Different From Surface

UL or lot no.	Section	Township	Range	Lot Idn	Feet from the	North/South line	Feet from the	East/West line	County
M	36	24 S	34 E		330	SOUTH	660	WEST	LEA

¹³ Dedicated Acres	¹³ Joint or Infill	¹⁴ Consolidation Code	¹⁵ Order No.
160			

No allowable will be assigned to this completion until all interests have been consolidated or a non-standard unit has been approved by the division.

N89°33'09"E 2641.05 FT		N89°34'58"E 2635.29 FT	
NW CORNER SEC. 36 LAT. = 32.1812453°N LONG. = 103.4321986°W NMSP EAST (FT) N = 430839.48 E = 820132.61	N O CORNER SEC. 36 LAT. = 32.1812409°N LONG. = 103.4236639°W NMSP EAST (FT) N = 430860.10 E = 822773.22	NE CORNER SEC. 36 LAT. = 32.1812321°N LONG. = 103.4151478°W NMSP EAST (FT) N = 430879.28 E = 825408.09	E O CORNER SEC. 36 LAT. = 32.1739750°N LONG. = 103.4151440°W NMSP EAST (FT) N = 428239.16 E = 825431.78
<p style="text-align: center;">TELECASTER BASS "36" STATE 1H</p> <p>ELEV. = 3421.0'</p> <p>LAT. = 32.1803378°N (NAD83)</p> <p>LONG. = 103.4308258°W</p> <p>NMSP EAST (FT)</p> <p>N = 430512.88</p> <p>E = 820560.13</p>			
W O CORNER SEC. 36 LAT. = 32.1739948°N LONG. = 103.4322041°W NMSP EAST (FT) N = 428201.72 E = 820153.02	<p style="text-align: center;">BOTTOM OF HOLE</p> <p>LAT. = 32.1676436°N</p> <p>LONG. = 103.4300706°W</p> <p>NMSP EAST (FT)</p> <p>N = 425896.73</p> <p>E = 820832.55</p>		<p><small>NOTE:</small></p> <p>LATITUDE AND LONGITUDE COORDINATES ARE SHOWN USING THE NORTH AMERICAN DATUM OF 1983 (NAD83). LISTED NEW MEXICO STATE PLANE EAST COORDINATES ARE GRID (NAD83). BASIS OF BEARING AND DISTANCES USED ARE NEW MEXICO STATE PLANE EAST COORDINATES MODIFIED TO THE SURFACE.</p>
SW CORNER SEC. 36 LAT. = 32.1667396°N LONG. = 103.4322030°W NMSP EAST (FT) N = 425562.32 E = 820175.48	S O CORNER SEC. 36 LAT. = 32.1667278°N LONG. = 103.4236736°W NMSP EAST (FT) N = 425580.22 E = 822814.86	SE CORNER SEC. 36 LAT. = 32.1667271°N LONG. = 103.4150881°W NMSP EAST (FT) N = 425602.53 E = 825471.59	

330'

660'

330'

660'

330'

660'

330'

660'

330'

660'

330'

660'

330'

660'

330'

660'

330'

660'

330'

660'

330'

660'

330'

660'

330'

660'

330'

660'

330'

660'

330'

660'

330'

660'

330'

660'

330'

660'

330'

660'

330'

660'

330'

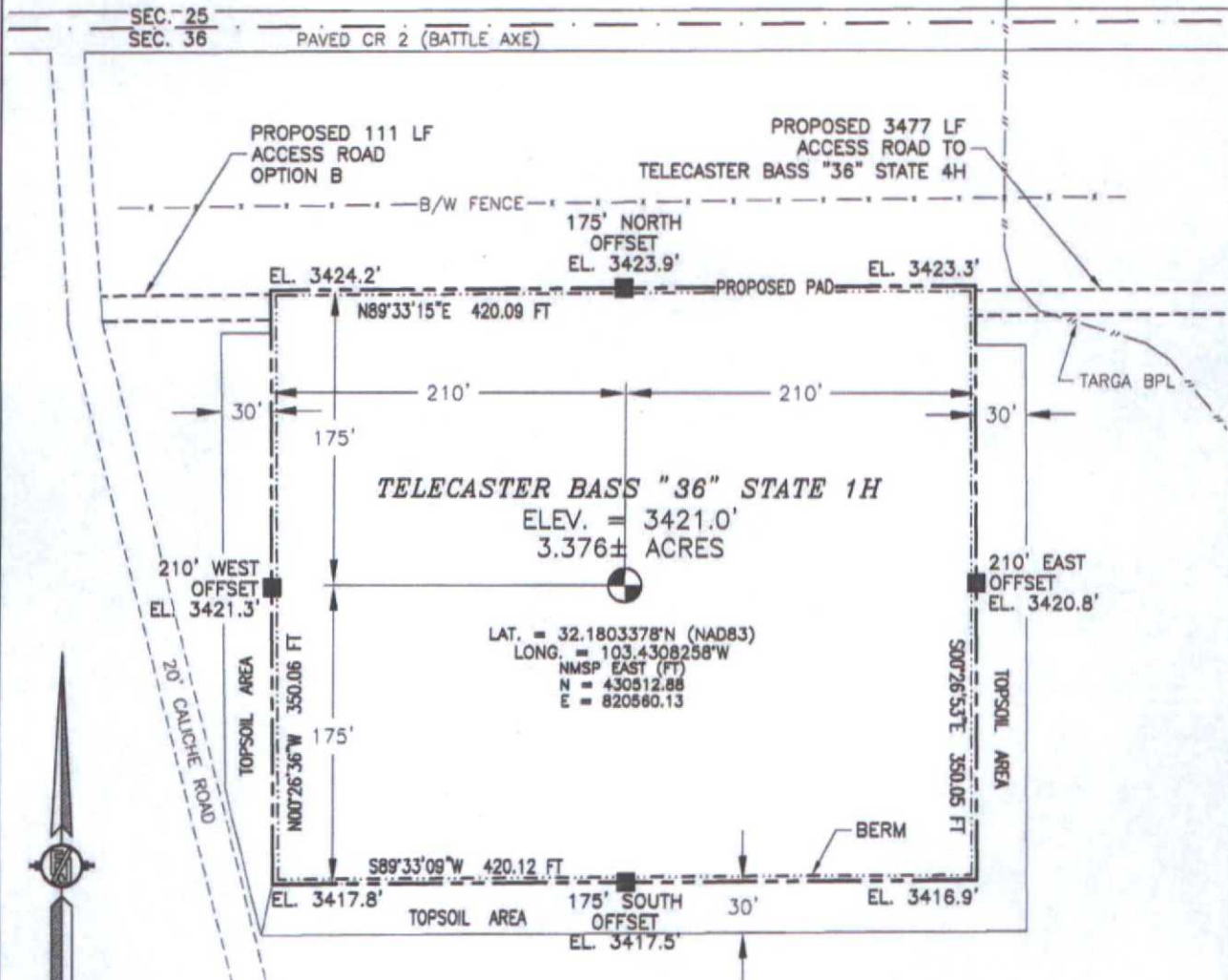
660'

330'

JAN 04 2016

SECTION 36, TOWNSHIP 24 SOUTH, RANGE 34 EAST, N.M.P.M.
LEA COUNTY, STATE OF NEW MEXICO
SITE MAP

NOTE: LATITUDE AND LONGITUDE COORDINATES ARE SHOWN USING THE NORTH AMERICAN DATUM OF 1983 (NAD83). LISTED NEW MEXICO STATE PLANE EAST COORDINATES ARE GRID (NAD83). BASIS OF BEARING AND DISTANCES USED ARE NEW MEXICO STATE PLANE EAST COORDINATES MODIFIED TO THE SURFACE



0 10 50 100 200

SCALE 1" = 100'

DIRECTIONS TO LOCATION

FROM STATE HIGHWAY 128 AND CR 2 (BATTLE AXE) GO SOUTHWEST ON CR 2 0.34 OF A MILE, TURN RIGHT AND GO WEST 0.32 OF A MILE, TURN LEFT ONTO EXISTING PAD FOR TELECASTER BASS "36" 4H AND FROM WEST SIDE OF PAD FOLLOW PROPOSED ROAD SURVEY FLAGS WEST 3477' TO THE PROPOSED NORTHEAST PAD CORNER FOR THIS LOCATION.

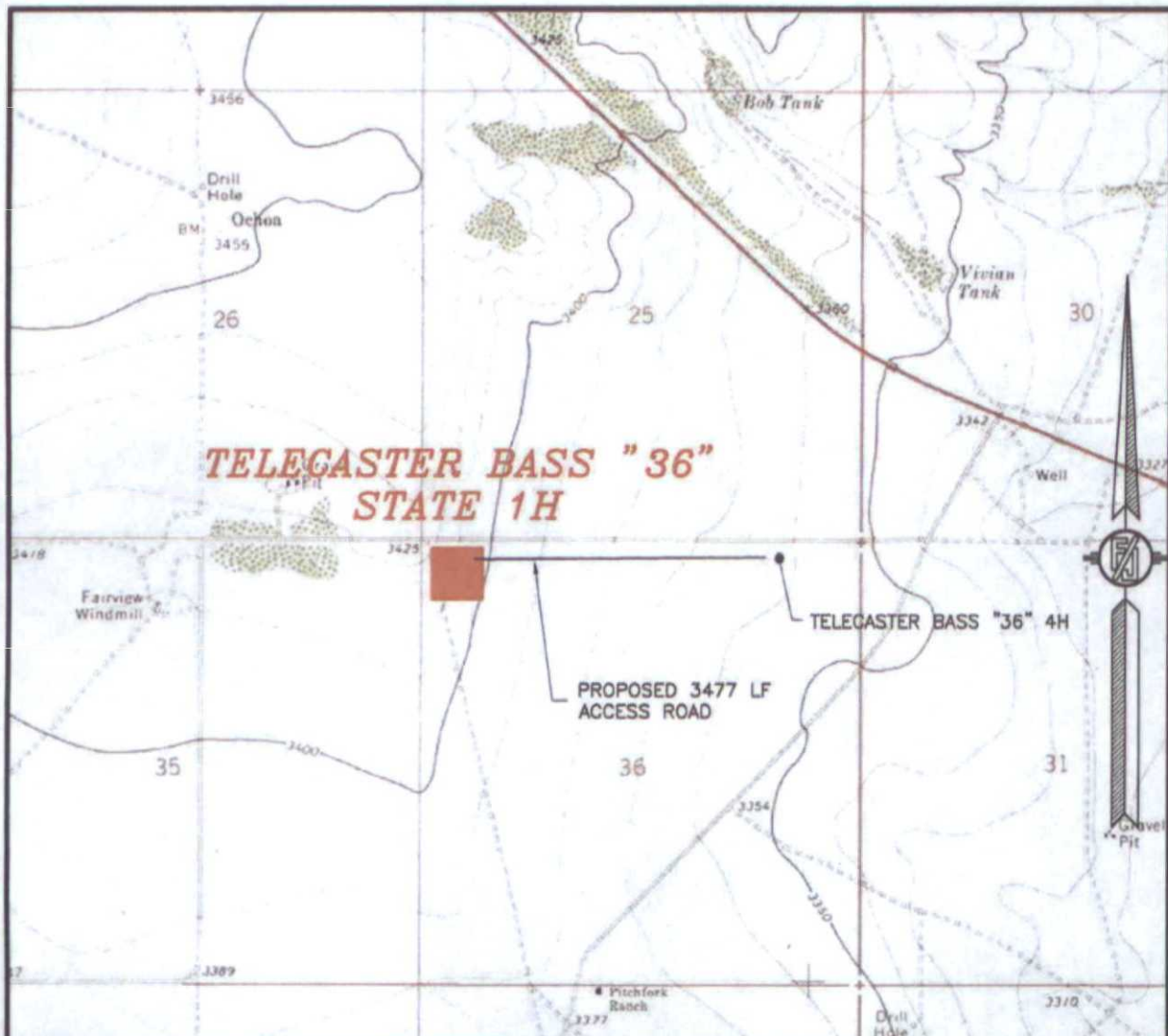
ENDURANCE RESOURCES, LLC
TELECASTER BASS "36" STATE 1H
LOCATED 330 FT. FROM THE NORTH LINE
AND 425 FT. FROM THE WEST LINE OF
SECTION 36, TOWNSHIP 24 SOUTH,
RANGE 34 EAST, N.M.P.M.
LEA COUNTY, STATE OF NEW MEXICO

JUNE 11, 2015

SURVEY NO. 4043

MADRON SURVEYING, INC. 301 SOUTH CANAL (575) 234-3341 CARLSBAD, NEW MEXICO

SECTION 36, TOWNSHIP 24 SOUTH, RANGE 34 EAST, N.M.P.M.
LEA COUNTY, STATE OF NEW MEXICO
LOCATION VERIFICATION MAP



USGS QUAD MAP:
WOODLEY FLAT

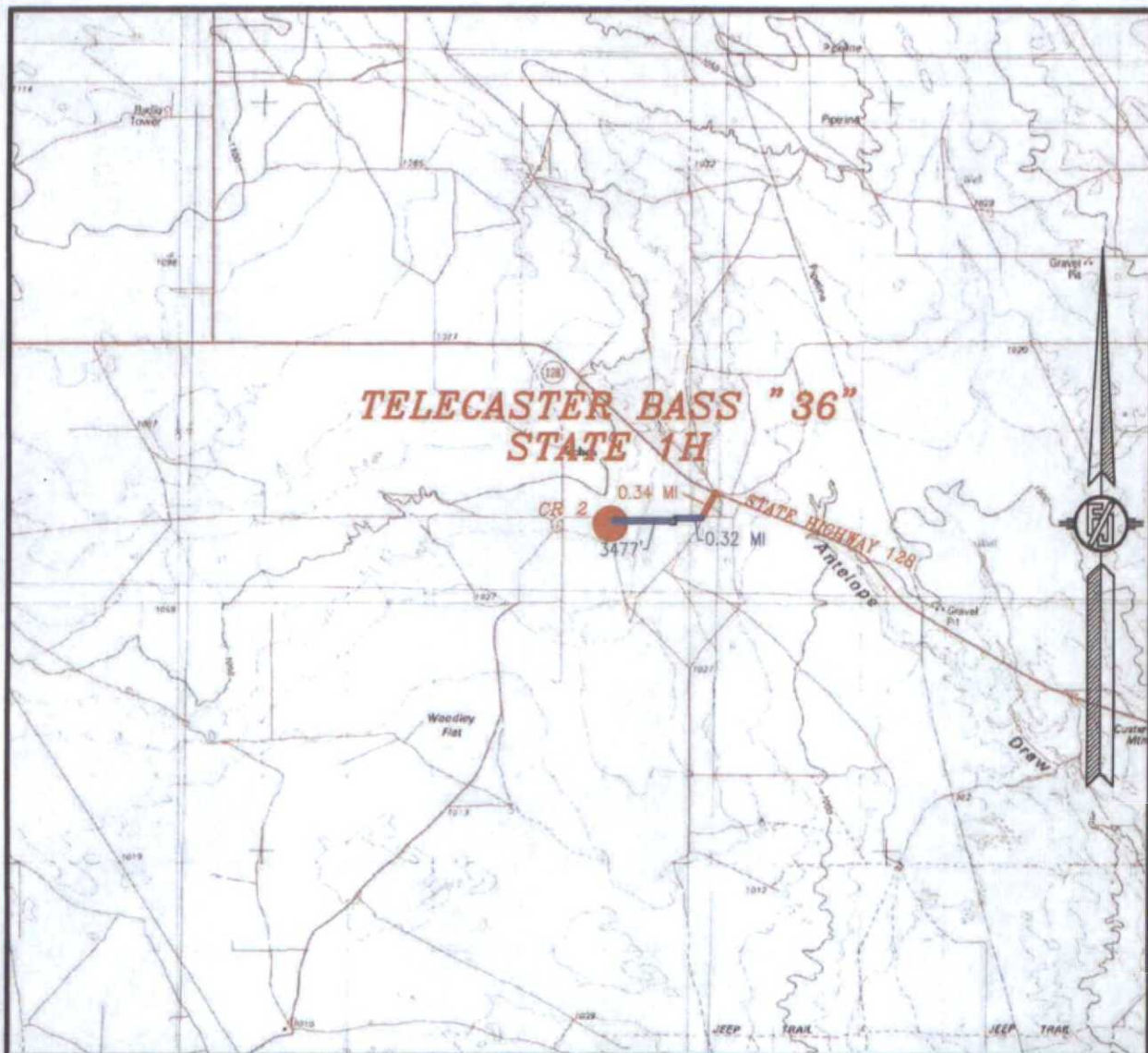
NOT TO SCALE

ENDURANCE RESOURCES, LLC
TELECASTER BASS "36" STATE 1H
LOCATED 330 FT. FROM THE NORTH LINE
AND 425 FT. FROM THE WEST LINE OF
SECTION 36, TOWNSHIP 24 SOUTH,
RANGE 34 EAST, N.M.P.M.
LEA COUNTY, STATE OF NEW MEXICO

JUNE 11, 2015

MADRON SURVEYING, INC. 301 SOUTH CANAL (575) 234-3341 CARLSBAD, NEW MEXICO SURVEY NO. 4043

SECTION 36, TOWNSHIP 24 SOUTH, RANGE 34 EAST, N.M.P.M.
LEA COUNTY, STATE OF NEW MEXICO
VICINITY MAP



DISTANCES IN MILES

NOT TO SCALE

DIRECTIONS TO LOCATION

FROM STATE HIGHWAY 128 AND CR 2 (BATTLE AXE) GO SOUTHWEST ON CR 2 0.34 OF A MILE, TURN RIGHT AND GO WEST 0.32 OF A MILE, TURN LEFT ONTO EXISTING PAD FOR TELECASTER BASS "36" 4H AND FROM WEST SIDE OF PAD FOLLOW PROPOSED ROAD SURVEY FLAGS WEST 3477' TO THE PROPOSED NORTHEAST PAD CORNER FOR THIS LOCATION.

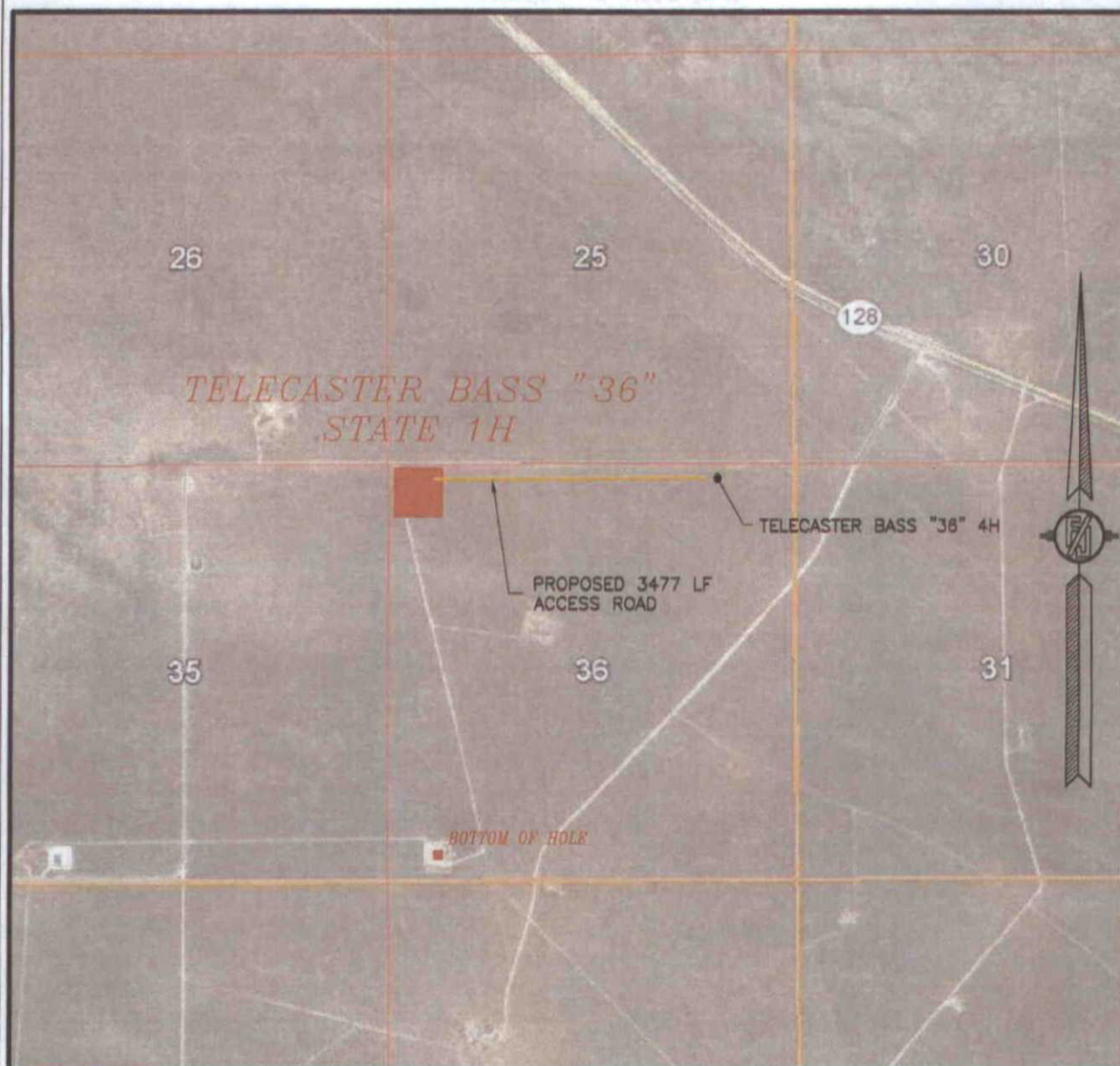
ENDURANCE RESOURCES, LLC
TELECASTER BASS "36" STATE 1H
LOCATED 330 FT. FROM THE NORTH LINE
AND 425 FT. FROM THE WEST LINE OF
SECTION 36, TOWNSHIP 24 SOUTH,
RANGE 34 EAST, N.M.P.M.
LEA COUNTY, STATE OF NEW MEXICO

JUNE 11, 2015

MADRON SURVEYING, INC. 301 SOUTH CANAL (575) 234-3341

SURVEY NO. 4043
CARLSBAD, NEW MEXICO

SECTION 36, TOWNSHIP 24 SOUTH, RANGE 34 EAST, N.M.P.M.
LEA COUNTY, STATE OF NEW MEXICO
AERIAL PHOTO



NOT TO SCALE
AERIAL PHOTO:
GOOGLE EARTH
FEBRUARY 2014

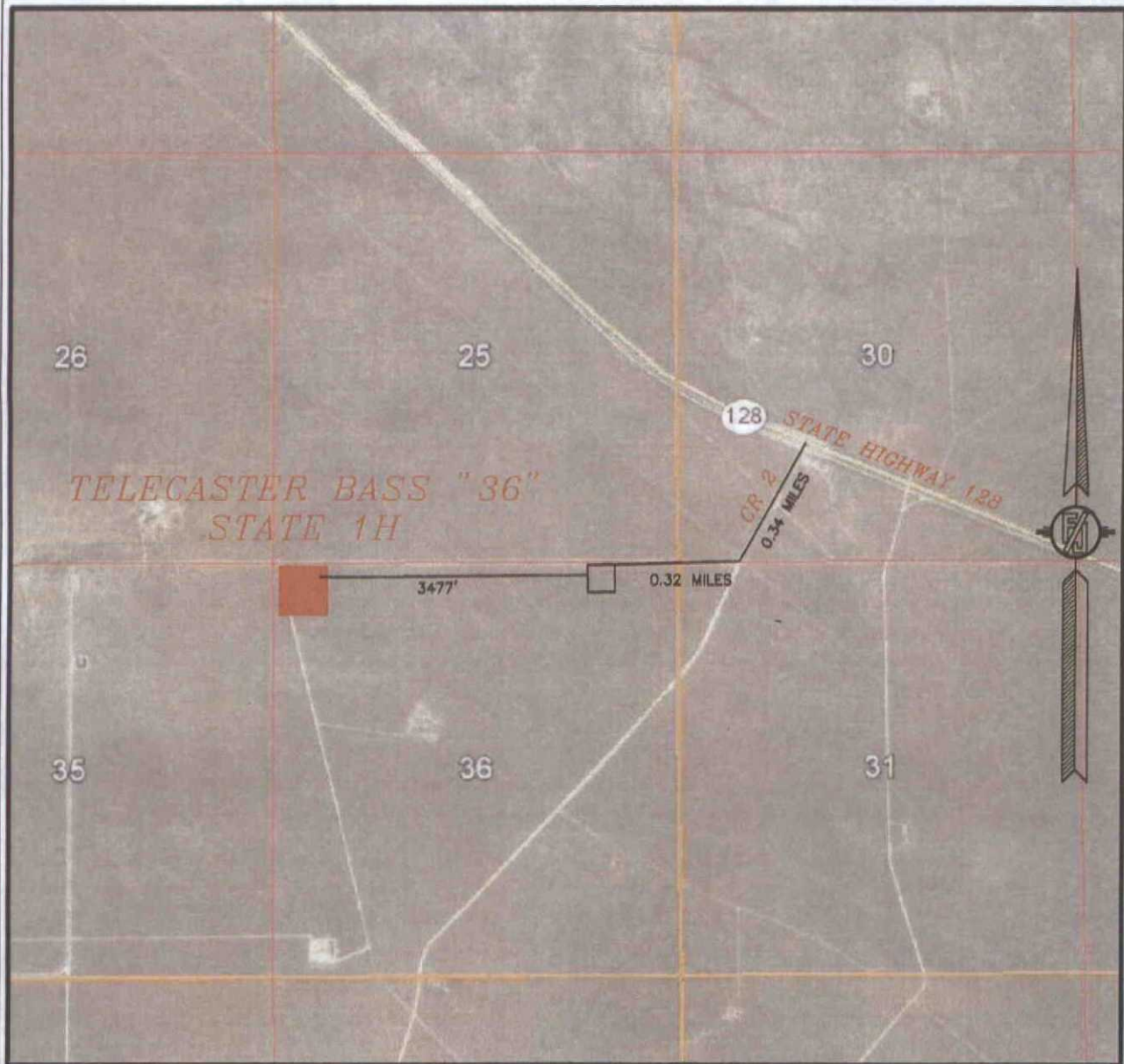
ENDURANCE RESOURCES, LLC
TELECASTER BASS "36" STATE 1H
LOCATED 330 FT. FROM THE NORTH LINE
AND 425 FT. FROM THE WEST LINE OF
SECTION 36, TOWNSHIP 24 SOUTH,
RANGE 34 EAST, N.M.P.M.
LEA COUNTY, STATE OF NEW MEXICO

JUNE 11, 2015

SURVEY NO. 4043

MADRON SURVEYING, INC. 301 SOUTH CANAL (575) 234-3341 CARLSBAD, NEW MEXICO

SECTION 36, TOWNSHIP 24 SOUTH, RANGE 34 EAST, N.M.P.M.
LEA COUNTY, STATE OF NEW MEXICO
ACCESS AERIAL ROUTE MAP



NOT TO SCALE
AERIAL PHOTO:
GOOGLE EARTH
FEBRUARY 2014

ENDURANCE RESOURCES, LLC
TELECASTER BASS "36" STATE 1H
LOCATED 330 FT. FROM THE NORTH LINE
AND 425 FT. FROM THE WEST LINE OF
SECTION 36, TOWNSHIP 24 SOUTH,
RANGE 34 EAST, N.M.P.M.
LEA COUNTY, STATE OF NEW MEXICO

JUNE 11, 2015

SURVEY NO. 4043

MADRON SURVEYING, INC. 301 SOUTH CANAL (575) 234-3341 CARLSBAD, NEW MEXICO