

District I  
1625 N. French Dr., Hobbs, NM 88240  
Phone: (575) 393-6161 Fax: (575) 393-0720  
District II  
811 S. First St., Artesia, NM 88210  
Phone: (575) 748-1283 Fax: (575) 748-9720  
District III  
1000 Rio Brazos Road, Aztec, NM 87410  
Phone: (505) 334-6178 Fax: (505) 334-6170  
District IV  
1220 S. St. Francis Dr., Santa Fe, NM 87505  
Phone: (505) 476-3460 Fax: (505) 476-3462

State of New Mexico  
Energy, Minerals & Natural Resources Department  
OIL CONSERVATION DIVISION  
1220 South St. Francis Dr.  
Santa Fe, NM 87505

HOBBS OCD

DEC 24 2015

RECEIVED

Form C-102  
Revised August 1, 2011  
Submit one copy to appropriate  
District Office

☐ AMENDED REPORT

WELL LOCATION AND ACREAGE DEDICATION PLAT

<sup>1</sup> API Number <b>30-025-42137</b>	<sup>2</sup> Pool Code <b>97922</b>	<sup>3</sup> Pool Name <b>WC-025 G-06 S223421L; Bone Spring</b>
<sup>4</sup> Property Code <b>30864</b>	<sup>5</sup> Property Name <b>GAUCHO 21 FEDERAL</b>	<sup>6</sup> Well Number <b>4H</b>
<sup>7</sup> OGRID No. <b>6137</b>	<sup>8</sup> Operator Name <b>DEVON ENERGY PRODUCTION COMPANY, L.P.</b>	<sup>9</sup> Elevation <b>3432.2</b>

<sup>10</sup> Surface Location

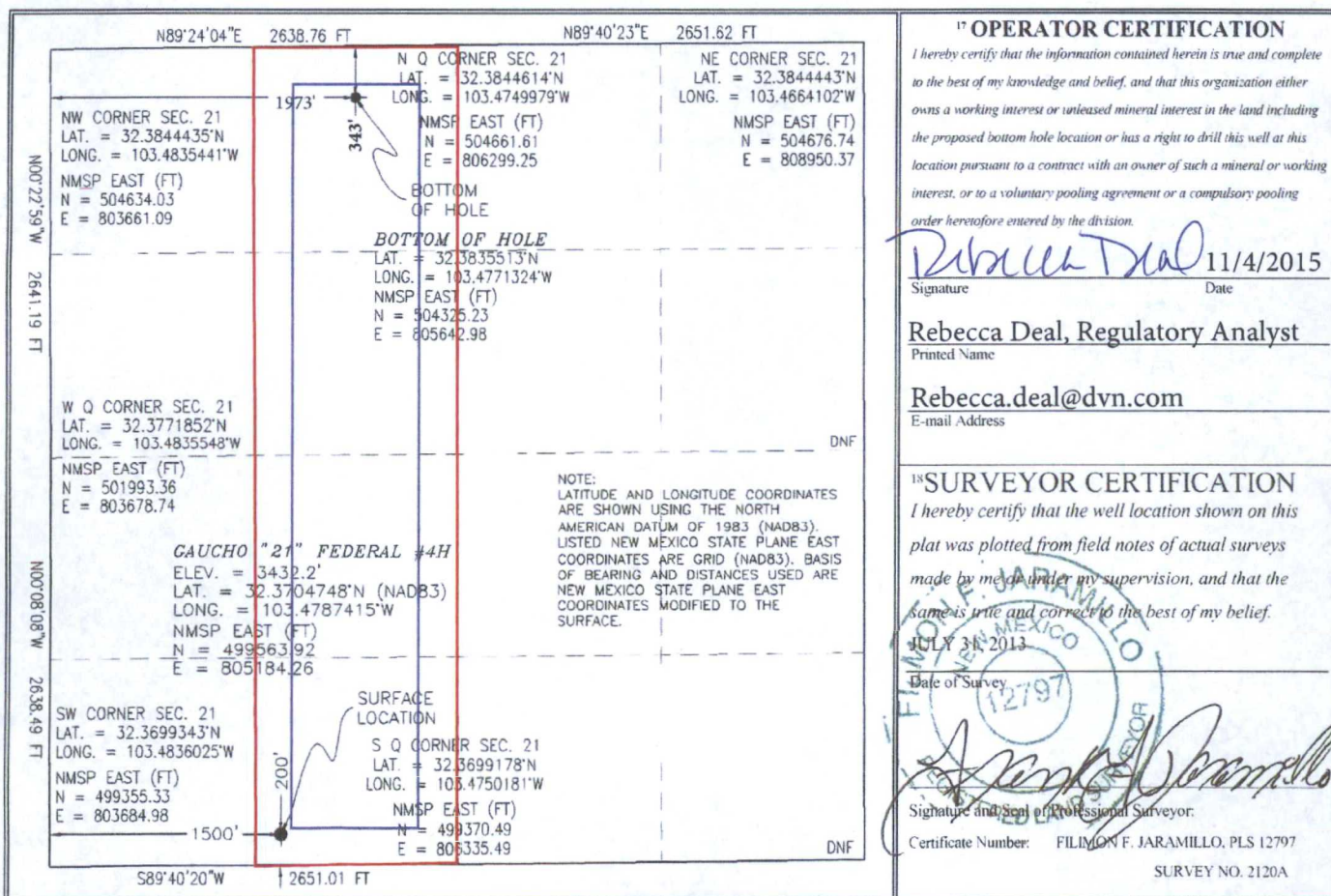
UL or lot no. <b>N</b>	Section <b>21</b>	Township <b>22 S</b>	Range <b>34 E</b>	Lot Idn	Feet from the <b>200</b>	North/South line <b>SOUTH</b>	Feet from the <b>1500</b>	East/West line <b>WEST</b>	County <b>LEA</b>
---------------------------	----------------------	-------------------------	----------------------	---------	-----------------------------	----------------------------------	------------------------------	-------------------------------	----------------------

<sup>11</sup> Bottom Hole Location If Different From Surface

UL or lot no. <b>C</b>	Section <b>21</b>	Township <b>22 S</b>	Range <b>34 E</b>	Lot Idn	Feet from the <b>343</b>	North/South line <b>NORTH</b>	Feet from the <b>1973</b>	East/West line <b>WEST</b>	County <b>LEA</b>
---------------------------	----------------------	-------------------------	----------------------	---------	-----------------------------	----------------------------------	------------------------------	-------------------------------	----------------------

<sup>12</sup> Dedicated Acres <b>160</b>	<sup>13</sup> Joint or Infill	<sup>14</sup> Consolidation Code	<sup>15</sup> Order No.
---	-------------------------------	----------------------------------	-------------------------

No allowable will be assigned to this completion until all interests have been consolidated or a non-standard unit has been approved by the division.



PP: 271' FSL & 1767' FWL, Sec. 21, T22S, R34E

Project Area:                       
Producing Area:                     

JAN 20 2016

cy