

☐ AMENDED REPORT

RECEIVED

WELL LOCATION AND ACREAGE DEDICATION PLAT

¹ API Number 30-025		² Pool Code 7280		³ Pool Name BRADLEY BOVE SPRING					
⁴ Property Code 316104		⁵ Property Name PEPPER RIDGE 15 B2CN FED COM						⁶ Well Number 3H	
⁷ OGRID NO. 14744		⁸ Operator Name MEWBOURNE OIL COMPANY						⁹ Elevation 3302'	
¹⁰ Surface Location									
UL or lot no. C	Section 15	Township 26S	Range 33E	Lot Idn	Feet from the 185	North/South line NORTH	Feet From the 2200	East/West line WEST	County LEA
¹¹ Bottom Hole Location If Different From Surface									
UL or lot no. N	Section 15	Township 26S	Range 33E	Lot Idn	Feet from the 330	North/South line SOUTH	Feet from the 2200	East/West line WEST	County LEA
¹² Dedicated Acres 160		¹³ Joint or Infill		¹⁴ Consolidation Code		¹⁵ Order No.			

No allowable will be assigned to this completion until all interest have been consolidated or a non-standard unit has been approved by the division.

16

N 89°38'51" E 2641.83'

2200'

S
SEE
DETAIL
"A"

185'

GEODETTIC DATA
NAD 27 GRID - NM EAST

SURFACE LOCATION
N: 382808.1 - E: 739242.4
LAT: 32.05010252° N
LONG: 103.56116059° W

BOTTOM HOLE
N: 378040.4 - E: 739279.3
LAT: 32.03699628° N
LONG: 103.56115158° W

CORNER DATA
NAD 27 GRID - NM EAST

A: FOUND BRASS CAP "1913"
N: 377698.0 - E: 737082.0

B: FOUND BRASS CAP "1913"
N: 380338.7 - E: 737063.2

C: CALCULATED CORNER
N: 382979.6 - E: 737041.3

D: FOUND BRASS CAP "1913"
N: 382995.8 - E: 739682.6

E: FOUND BRASS CAP "1913"
N: 383010.9 - E: 742332.0

F: FOUND BRASS CAP "1913"
N: 380369.7 - E: 742352.0

G: FOUND BRASS CAP "1913"
N: 377731.0 - E: 742372.6

H: FOUND BRASS CAP "1913"
N: 377713.0 - E: 739727.9

Project Area →
Producing Acre →

DETAIL "A"

3309.6' 710' 3308.4'
600' S. L.
3295.3' 3300.4'

4768.68' (HORIZ.)
S 00°26'36" E (GRID) 4768.68' (HORIZ.)
Well Path

15

2200'

B. H.

330'

N 00°28'34" W 2641.38'

N 00°24'31" W 2641.24'

S 89°40'33" W 2646.33'

S 89°40'27" E 2649.94'

S 89°36'36" W 2645.25'

S 00°26'03" E 2641.67'

S 00°26'03" E 2641.67'

S 00°26'47" E 2639.28'

17 OPERATOR CERTIFICATION

I hereby certify that the information contained herein is true and complete to the best of my knowledge and belief, and that this organization either owns a working interest or unleased mineral interest in the land including the proposed bottom hole location or has a right to drill this well at this location pursuant to a contract with an owner of such a mineral or working interest, or to a voluntary pooling agreement or a compulsory pooling order heretofore entered by the division.

[Signature] 12-31-15
Signature Date
BRADLEY BISHOP
Printed Name

E-mail Address

18 SURVEYOR CERTIFICATION

I hereby certify that the well location shown on this plat was plotted from field notes of actual surveys made by me or under my supervision, and that the same is true and correct to the best of my belief.

12-23-2015
Date of Survey

Signature and Seal of Professional Surveyor

[Signature]

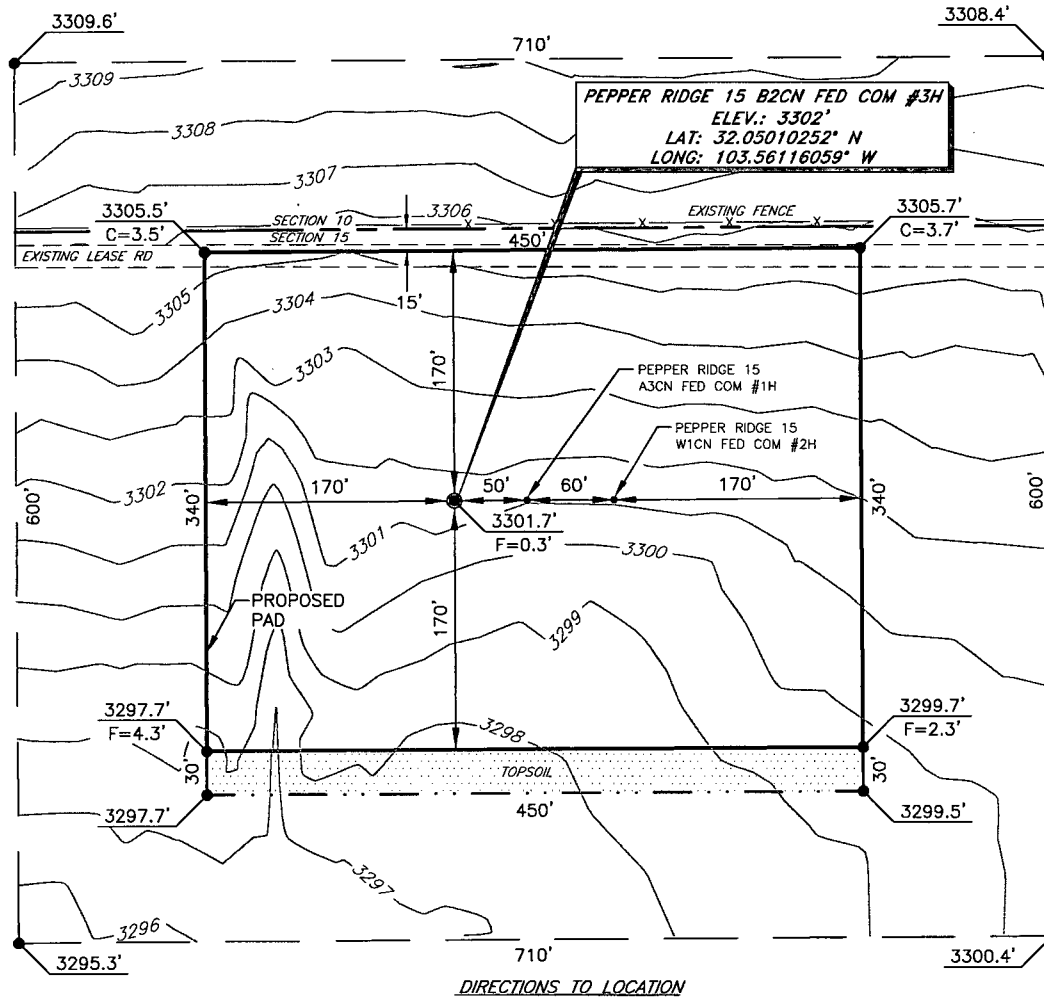
19680
Certificate Number

ROBERT M. HOWETT
NEW MEXICO
19680
PROFESSIONAL SURVEYOR

RRC - Firm No.: TX 10193838 NM 4655451 - Job No.: LS1512652

APR 22 2016

MEWBOURNE OIL COMPANY
PEPPER RIDGE 15 B2CN FED COM #3H
 (185' FNL & 2200' FWL)
 SECTION 15, T26S, R33E
 N. M. P. M., LEA CO., NEW MEXICO



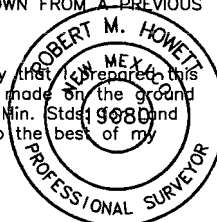
DIRECTIONS TO LOCATION

From the intersection of CR-2 (Battle Axe Rd.) and Pipeline Road;
 Go West on Pipeline Road approx. 0.3 miles to a lease road on the left;
 Turn left and go Southwest approx. 1.3 miles to a lease road on the left;
 Turn left and go South approx. 0.1 miles to a lease road on the left;
 Turn left and go East approx. 0.2 miles to location on the right.

THIS IS NOT A BOUNDARY SURVEY, APPARENT PROPERTY CORNERS AND PROPERTY LINES ARE SHOWN FOR INFORMATION ONLY. BOUNDARY DATA IS SHOWN FROM A PREVIOUS SURVEY REFERENCED HEREON.

I, R. M. Howett, a N. M. Professional Surveyor, hereby certify that I prepared this unclassified survey of a well location from an actual survey made on the ground under my direct supervision, said survey and plat meet the Min. Standards and Surveying in the State of N. M. and are true and correct to the best of my knowledge and belief.

Robert M. Howett
 Robert M. Howett NM PS 19680



N

SCALE: 1" = 100'

0 50 100

BEARINGS ARE
 NAD 27 GRID - NM EAST
 DISTANCES ARE
 GROUND.

Firm No.: TX 10193838 NM 4655451

Copyright 2015 - All Rights Reserved

NO.	REVISION	DATE
JOB NO.:	LS1512652	
DWG. NO.:	1512652PAD	

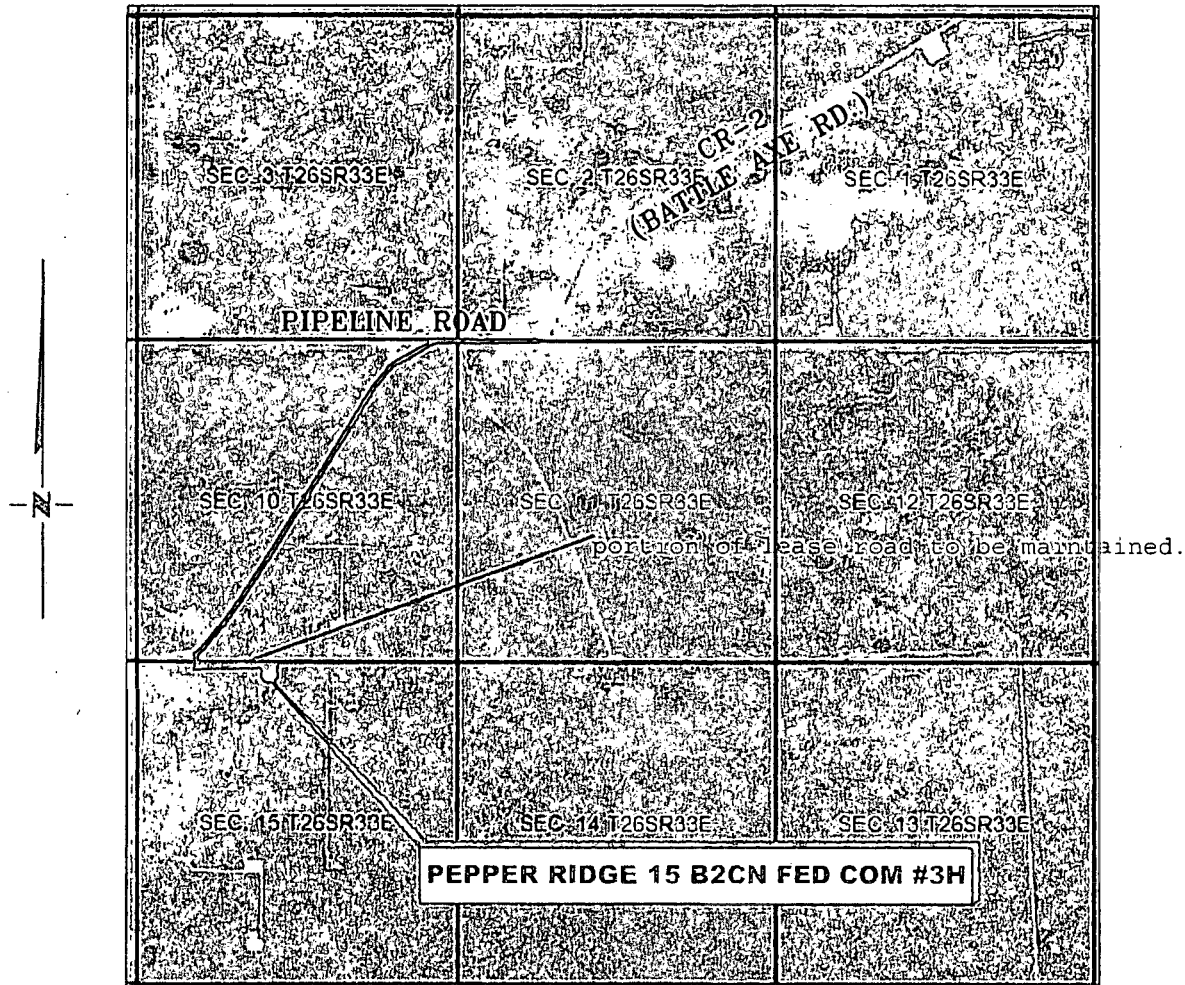
RRC

308 W. BROADWAY ST., HOBBS, NM 88240 (575) 964-8200

SCALE: 1" = 100'
DATE: 12-23-2015
SURVEYED BY: ML/CE
DRAWN BY: LPS
APPROVED BY: RMH
SHEET : 1 OF 1

VICINITY MAP

NOT TO SCALE



*SECTION 15, TWP. 26 SOUTH, RGE. 33 EAST,
N. M. P. M., EDDY CO., NEW MEXICO*

OPERATOR: Mewbourne Oil Company
LEASE: Pepper Ridge 15 B2CN Fed Com
WELL NO.: 3H

LOCATION: 185' FNL & 2200' FWL
ELEVATION: 3302'

Firm No.: TX 10193838 NM 4655451

Copyright 2014 - All Rights Reserved

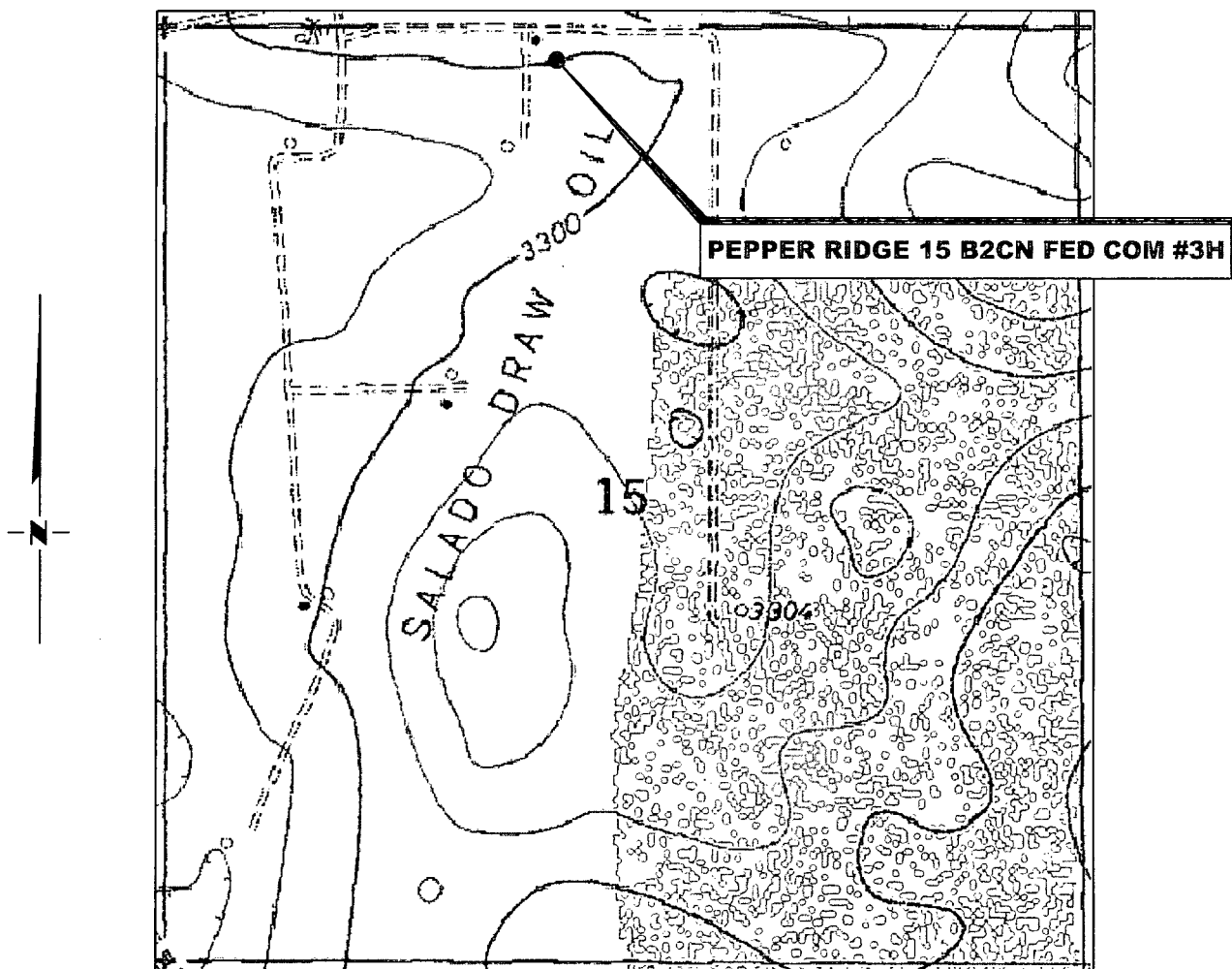
NO.	REVISION	DATE
JOB NO.:	LS1512652	
DWG. NO.:	1512652VM	

RRC

308 W. BROADWAY ST., HOBBS, NM 88240 (575) 964-8200

SCALE: NTS
DATE: 12-23-2015
SURVEYED BY: ML/CE
DRAWN BY: LPS
APPROVED BY: RMH
SHEET : 1 OF 1

LOCATION VERIFICATION MAP



*SECTION 15, TWP. 26 SOUTH, RGE. 33 EAST,
N. M. P. M., LEA CO., NEW MEXICO*

OPERATOR: Mewbourne Oil Company
LEASE: Pepper Ridge 15 B2CN Fed Com
WELL NO.: 3H
ELEVATION: 3302'

LOCATION: 185' FNL & 2200' FWL
CONTOUR INTERVAL: 10'
USGS TOPO. SOURCE MAP:
Paduca Breaks East, NM (1973)

Firm No.: TX 10193838 NM 4655451

Copyright 2014 - All Rights Reserved

NO.	REVISION	DATE
JOB NO.: LS1512652		
DWG. NO.: 1512652LVM		

RRC

308 W. BROADWAY ST., HOBBS, NM 88240 (575) 964-8200

SCALE: 1" = 1000'
DATE: 12-23-2015
SURVEYED BY: ML/CE
DRAWN BY: LPS
APPROVED BY: RMH
SHEET : 1 OF 1