

District I
1625 N. French Dr., Hobbs, NM 88240
Phone: (575) 393-6161 Fax: (575) 393-0720
District II
811 S. First St., Artesia, NM 88210
Phone: (575) 748-1283 Fax: (575) 748-9720
District III
1000 Rio Brazos Road, Aztec, NM 87410
Phone: (505) 334-6178 Fax: (505) 334-6170
District IV
1220 S. St. Francis Dr., Santa Fe, NM 87505
Phone: (505) 476-3460 Fax: (505) 476-3462

State of New Mexico
Energy, Minerals & Natural Resources Department
OIL CONSERVATION DIVISION
1220 South St. Francis Dr.
Santa Fe, NM 87505

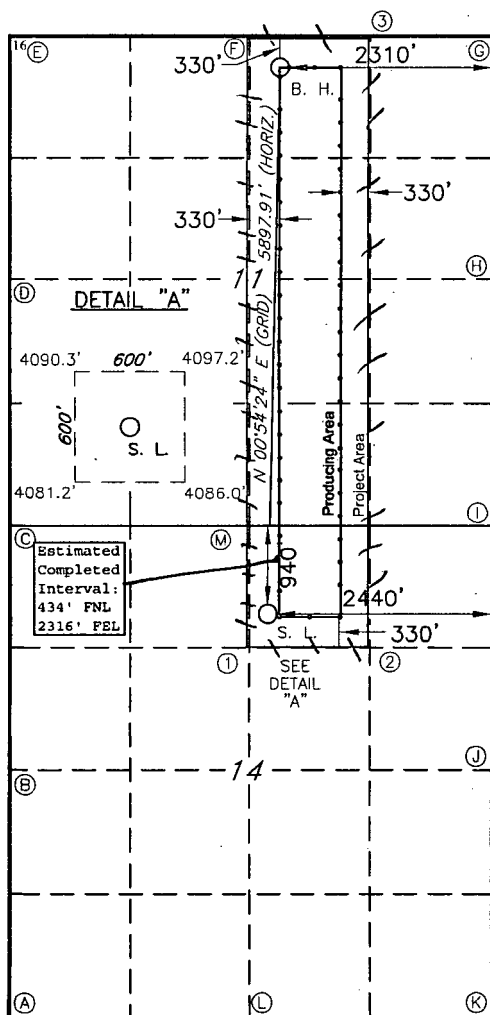
Form C-102
Revised August 1, 2011
Submit one copy to appropriate
District Office
HOBBS OCD

APR 18 2016 ☐ AMENDED REPORT

WELL LOCATION AND ACREAGE DEDICATION

1 API Number 30-025- 43157		2 Pool Code 44500		3 Pool Name Maljamar; Yeso, West	
4 Property Code 40481		5 Property Name FLAT HEAD FEDERAL COM			
7 GRID NO. 229137		8 Operator Name COG OPERATING, LLC			
		6 Well Number 15H		9 Elevation 4088'	
10 Surface Location					
UL or lot no. B	Section 14	Township 17S	Range 32E	Lot Idn	Feet from the 940
				North/South line NORTH	Feet From the 2440
				East/West line EAST	County LEA
11 Bottom Hole Location If Different From Surface					
UL or lot no. B	Section 11	Township 17S	Range 32E	Lot Idn	Feet from the 330
				North/South line NORTH	Feet from the 2310
				East/West line EAST	County LEA
12 Dedicated Acres 200		13 Joint or Infill		14 Consolidation Code	
				15 Order No.	

No allowable will be assigned to this completion until all interest have been consolidated or a non-standard unit has been approved by the division.



GEODETIC DATA
NAD 83 GRID - NM EAST
SURFACE LOCATION
N 669557.9 - E 724662.4
LAT: 32.83921649° N
LONG: 103.73644377° W
BOTTOM HOLE
N 675453.7 - E 724755.6
LAT: 32.85541975° N
LONG: 103.73603157° W

CORNER DATA
NAD 83 GRID - NM EAST
A: FOUND BRASS CAP "1913"
N 665220.0 - E 721849.6
B: FOUND BRASS CAP "1913"
N 667859.2 - E 721833.3
C: FOUND BRASS CAP "1913"
N 670497.8 - E 721816.9
D: FOUND BRASS CAP "1913"
N 673135.6 - E 721803.6
E: FOUND BRASS CAP "1913"
N 675771.1 - E 721786.3
F: FOUND BRASS CAP "1913"
N 675782.2 - E 724424.0
G: FOUND BRASS CAP "1913"
N 675793.6 - E 727062.9
H: FOUND BRASS CAP "1913"
N 673155.6 - E 727079.7
I: FOUND BRASS CAP "1913"
N 670517.3 - E 727096.3
J: FOUND BRASS CAP "1913"
N 667876.3 - E 727113.4
K: FOUND BRASS CAP "1913"
N 665238.4 - E 727129.7
L: FOUND BRASS CAP "1913"
N 665229.1 - E 724489.8
M: FOUND BRASS CAP "1913"
N 670496.2 - E 724451.5
1: CALCULATED CORNER
N 669188.1 - E 724461.0
2: CALCULATED CORNER
N 669193.0 - E 725782.8
3: CALCULATED CORNER
N 675787.9 - E 725743.5

17 OPERATOR CERTIFICATION
I hereby certify that the information contained herein is true and complete to the best of my knowledge and belief, and that this organization either owns a working interest or unleased mineral interest in the land including the proposed bottom hole location or has a right to drill this well at this location pursuant to a contract with an owner of such a mineral or working interest, or to a voluntary pooling agreement or a compulsory pooling order heretofore entered by the division.

Signature: *Robyn M. Odom* Date: 02/22/2016
Printed Name: Robyn M. Odom
E-mail Address: Rodom@concho.com

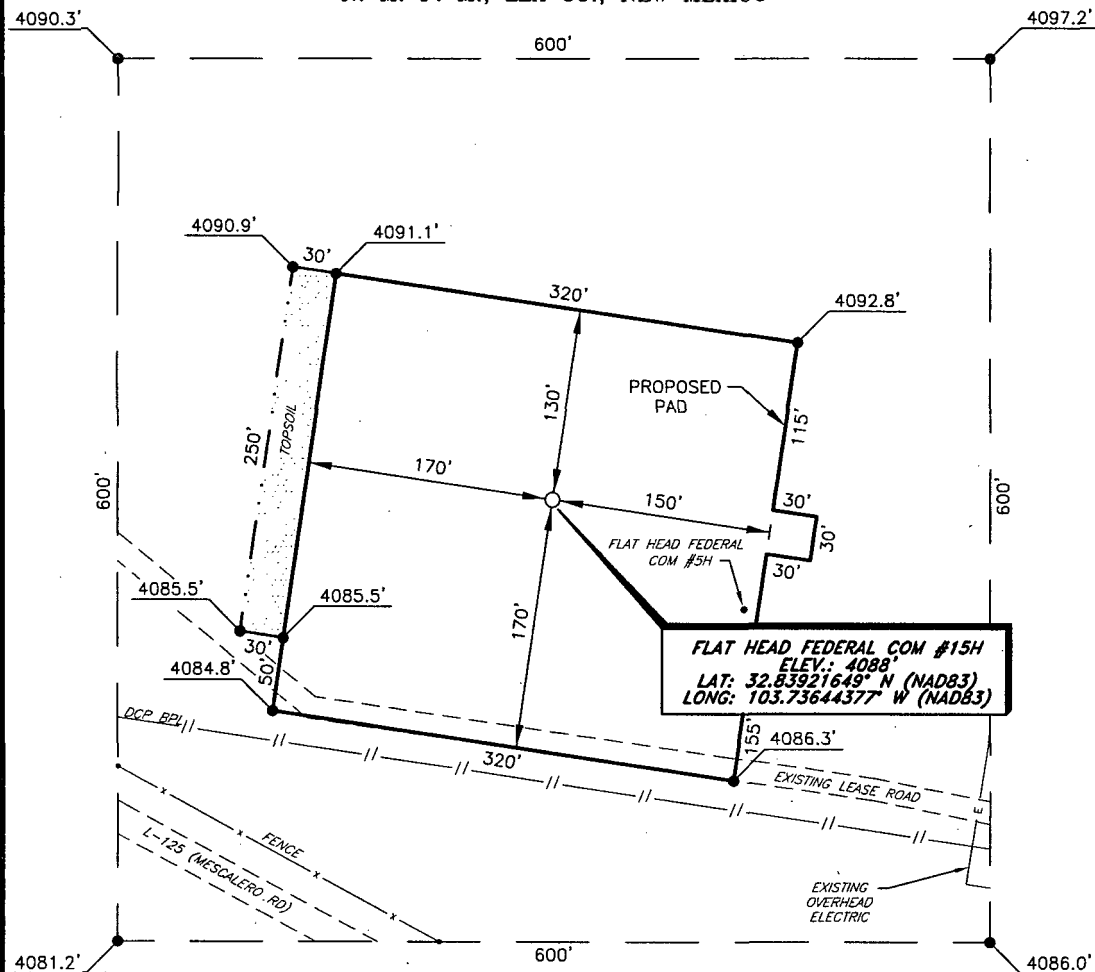
18 SURVEYOR CERTIFICATION
I hereby certify that the well location shown on this plat was plotted from field notes of actual surveys made by me or under my supervision, and that the same is true and correct to the best of my belief.

2-19-16
Date of Survey
Signature and Seal of Professional Surveyor: *Robert M. Howett*
19680
Certificate Number

RRC - Firm No.: TX 10193838 NM 4655451 - Job No.: LS1504160

APR 22 2016

COG OPERATING, LLC
 FLAT HEAD FEDERAL COM #15H
 (940' FNL & 2440' FEL)
 SECTION 14, T17S, R32E
 N. M. P. M., LEA CO., NEW MEXICO



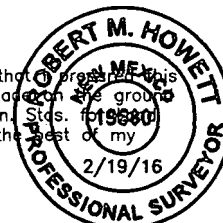
DIRECTIONS TO LOCATION

From the intersection of L-125 (Mescalero Road) and L-126 (Maljamar Road);
 Go East on L-125 for approx. 1.5 miles to lease road on left;
 Turn left go North turning East following lease road approx. 0.1 miles to this location.

SCALE: 1" = 100'
 0 50 100
 BEARINGS ARE
 NAD 83 GRID - NM EAST
 DISTANCES ARE
 GROUND.

I, R. M. Howett, a N. M. Professional Surveyor, hereby certify that I prepared this unclassified survey of a well location from an actual survey made on the ground under my direct supervision, said survey and plat meet the Min. Stds. for 1988 Surveying in the State of N. M. and are true and correct to the best of my knowledge and belief.

Robert M. Howett
 Robert M. Howett NM PS 19680



Firm No.: TX 10193838 NM 4555451

Copyright 2015 - All Rights Reserved

NO.	REVISION	DATE
JOB NO.:	LS1504160	
DWG. NO.:	1504160PAD	

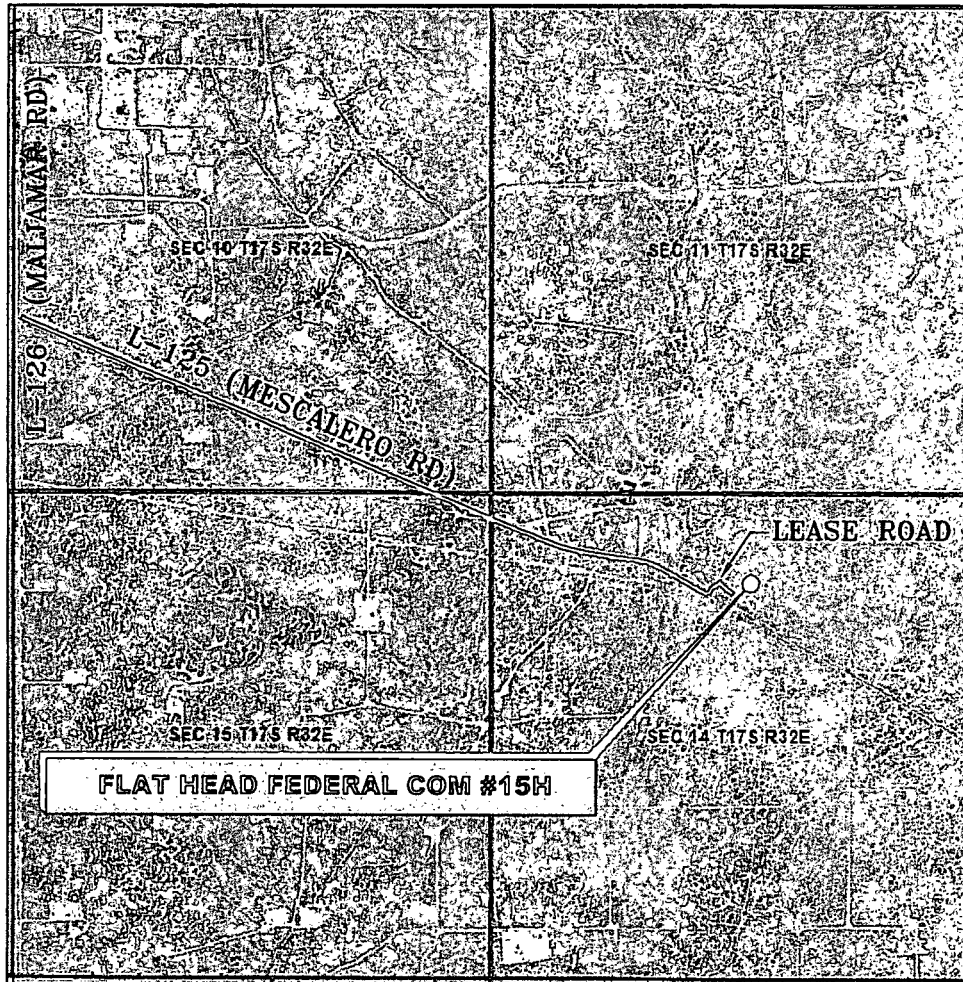
RRC

308 W. BROADWAY ST., HOBBS, NM 88240 (575) 964-8200

SCALE: 1" = 100'
DATE: 5-1-15
SURVEYED BY: ML/ER
DRAWN BY: JC
APPROVED BY: RMH
SHEET : 1 OF 1

VICINITY MAP

NOT TO SCALE



SECTION 14, TWP. 17 SOUTH, RGE. 32 EAST,
N. M. P. M., LEA CO., NEW MEXICO

OPERATOR: COG Operating, LLC
LEASE: Flat Head Federal Com
WELL NO.: 15H

LOCATION: 940' FNL & 2440' FEL
ELEVATION: 4088'

Firm No.: TX 10193838 NM 4655451

Copyright 2015 - All Rights Reserved

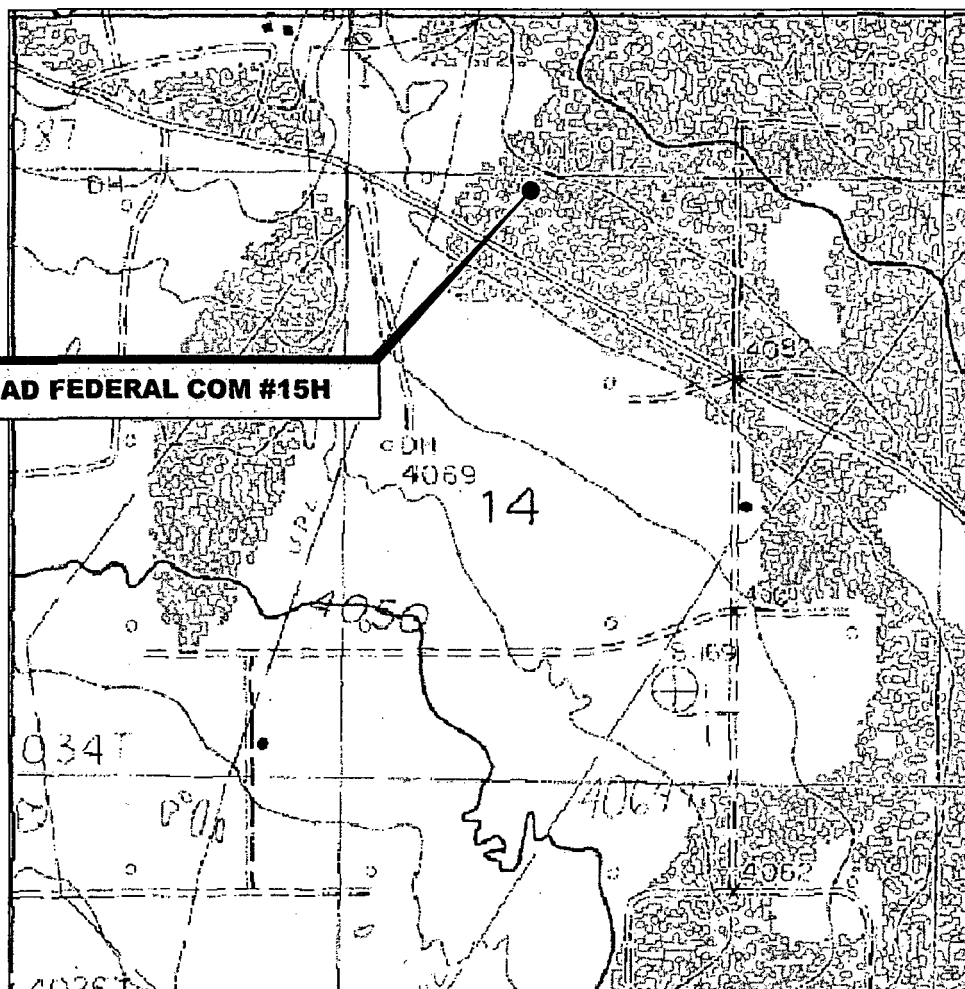
NO.	REVISION	DATE
JOB NO.: LS1504160		
DWG. NO.: 1504160VM		

RRC

308 W. BROADWAY ST., HOBBS, NM 88240 (575) 964-8200

SCALE: N. T. S.
DATE: 5/1/15
SURVEYED BY: ML/ER
DRAWN BY: JC
APPROVED BY: RMH
SHEET : 1 OF 1

LOCATION VERIFICATION MAP



*SECTION 14, TWP. 17 SOUTH, RGE. 32 EAST,
N. M. P. M., LEA CO., NEW MEXICO*

OPERATOR: COG Operating, LLC
LEASE: Flat Head Federal Com
WELL NO.: 15H
ELEVATION: 4088'

LOCATION: 940' FNL & 2440' FEL
CONTOUR INTERVAL: 10'
USGS TOPO. SOURCE MAP:
Maljamar, NM (P. E. 1985)

Firm No.: TX 10193838 NM 4655451

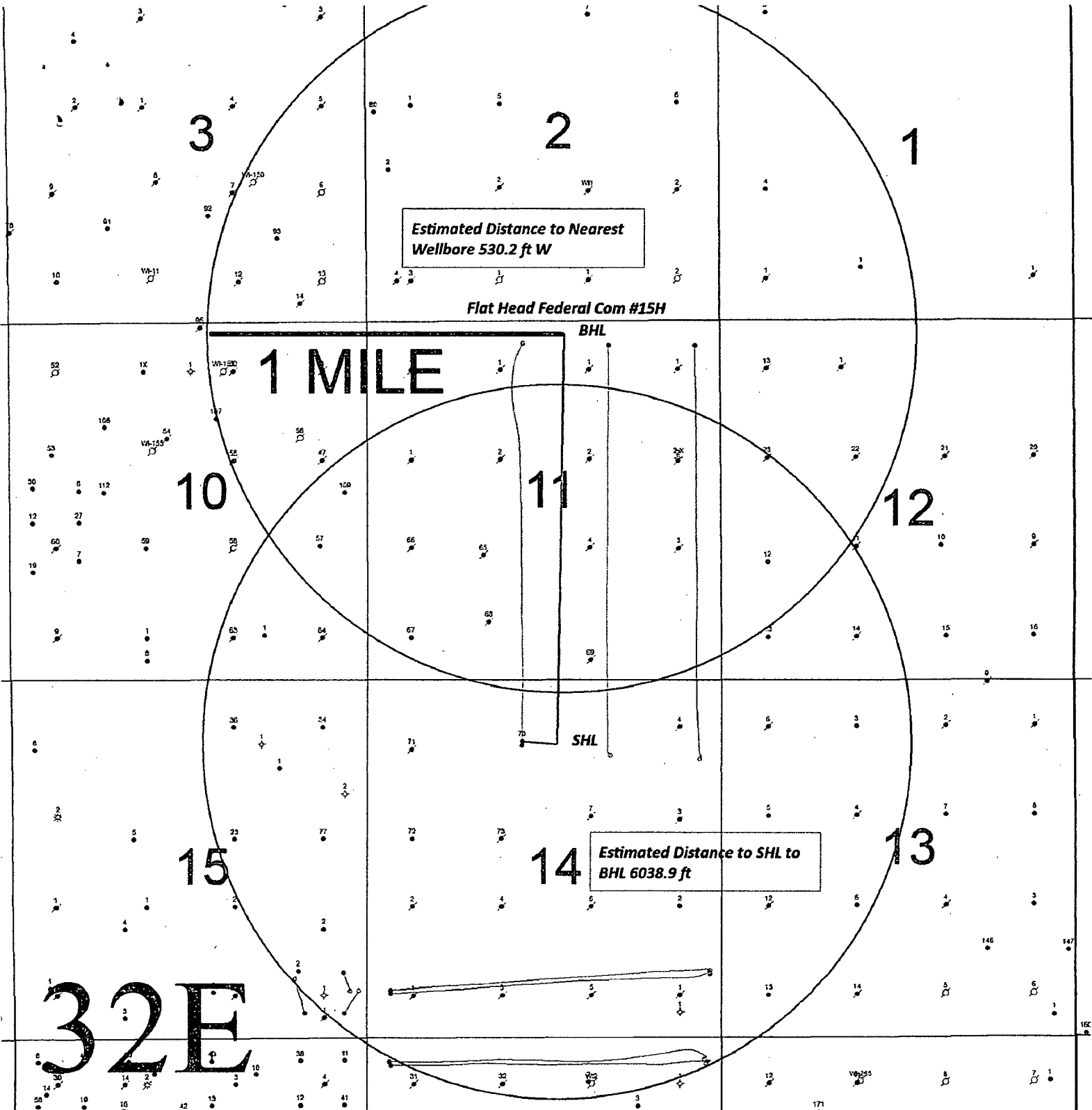
Copyright 2015 - All Rights Reserved

NO.	REVISION	DATE
JOB NO.:	LS1504160	
DWG. NO.:	1504160LVM	

RRC

308 W. BROADWAY ST., HOBBS, NM 88240 (575) 964-8200

SCALE: 1" = 1000
DATE: 5/1/15
SURVEYED BY: ML/ER
DRAWN BY: JC
APPROVED BY: RMH
SHEET : 1 OF 1



SENM Shelf Area
Flat Head Federal Com 15H

SEC. 14, T17S - R32E SHL 940 FNL 2440 FEL, UNIT B
SEC. 11, T17S - R32E SHL 330 FNL 2310 FEL, UNIT B

Author:
ldm

Date:
18 May. 2015