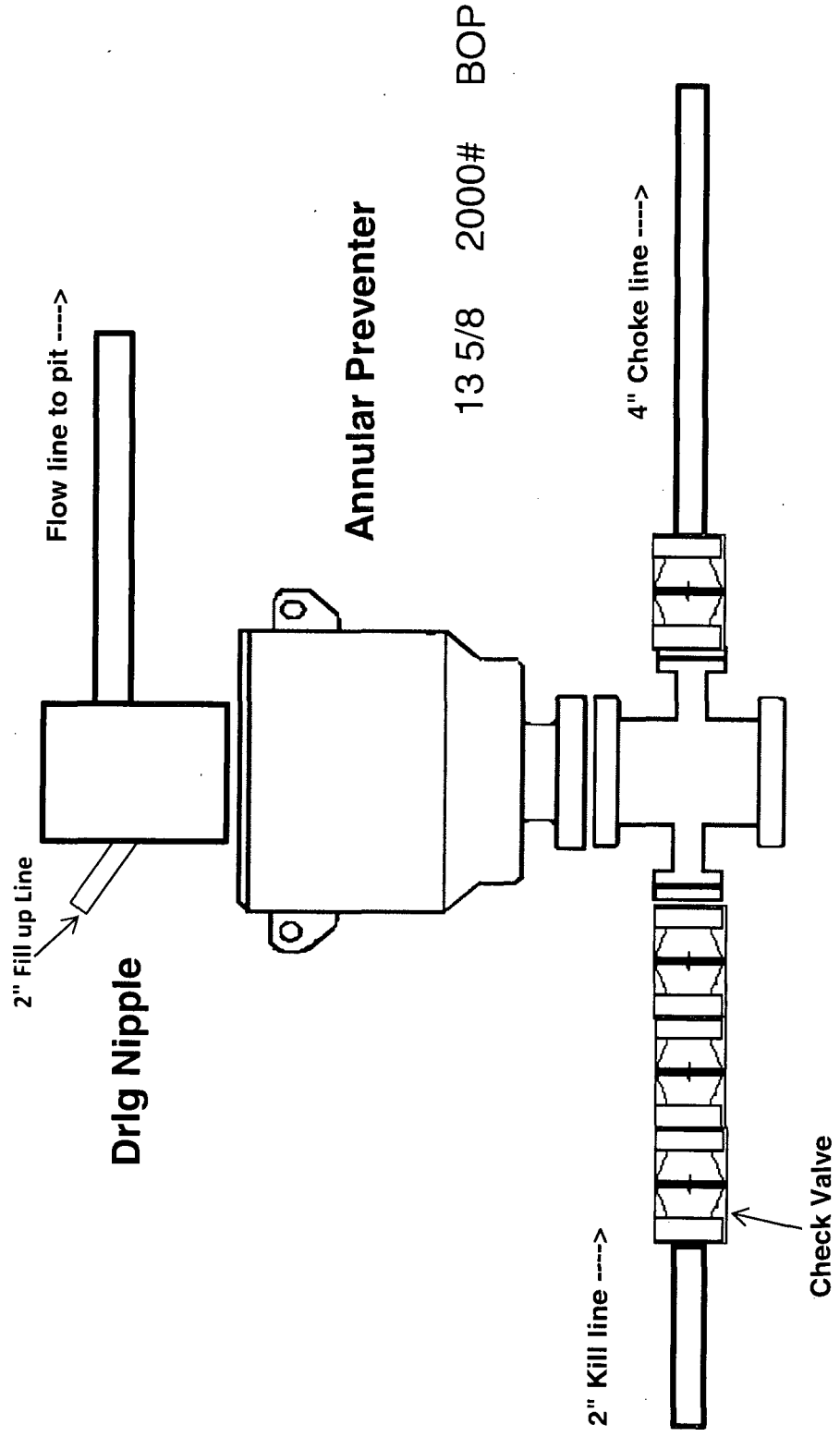


2,000 psi BOP Schematic



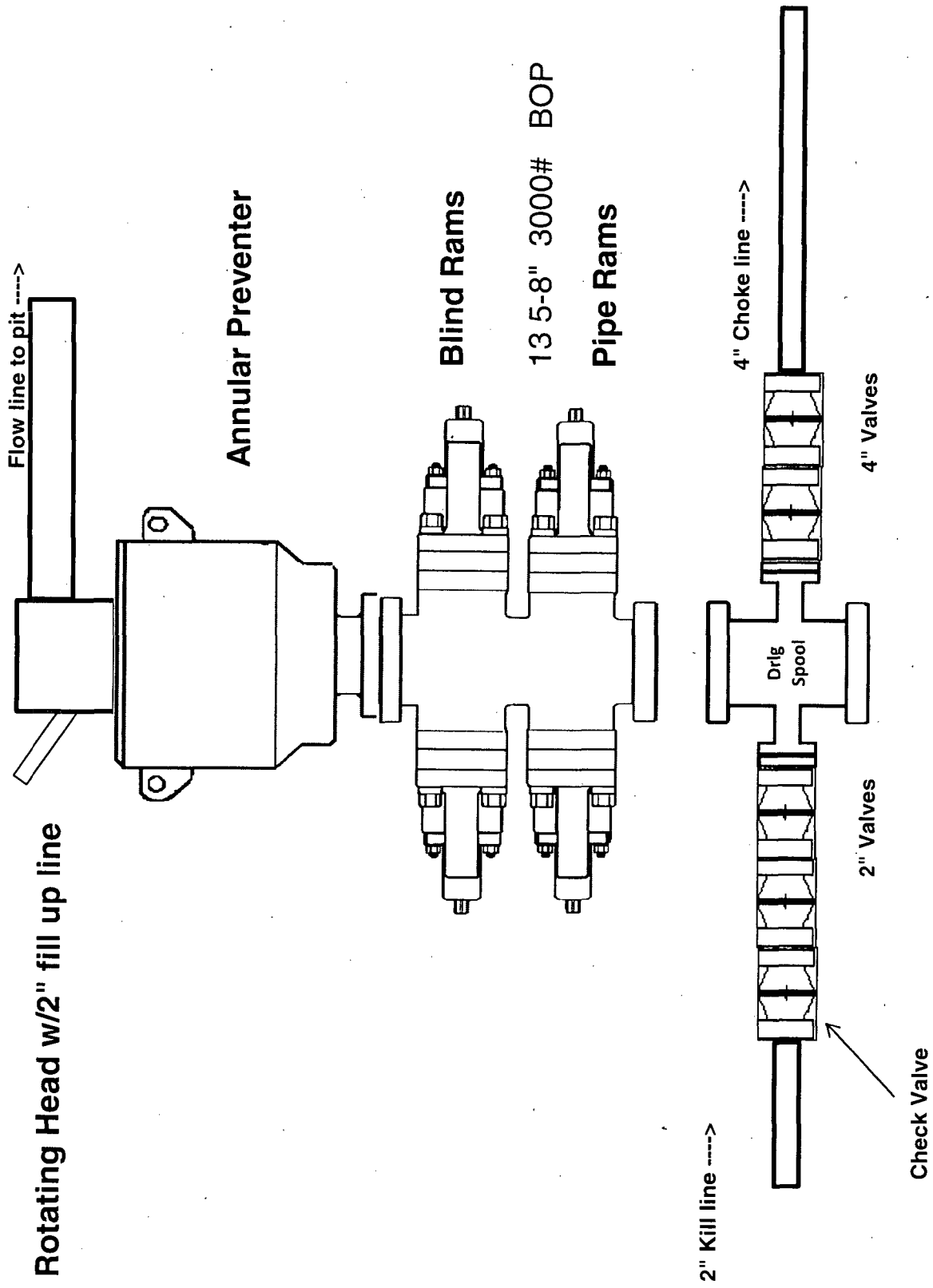
HOBBS OGD

APR 21 2016

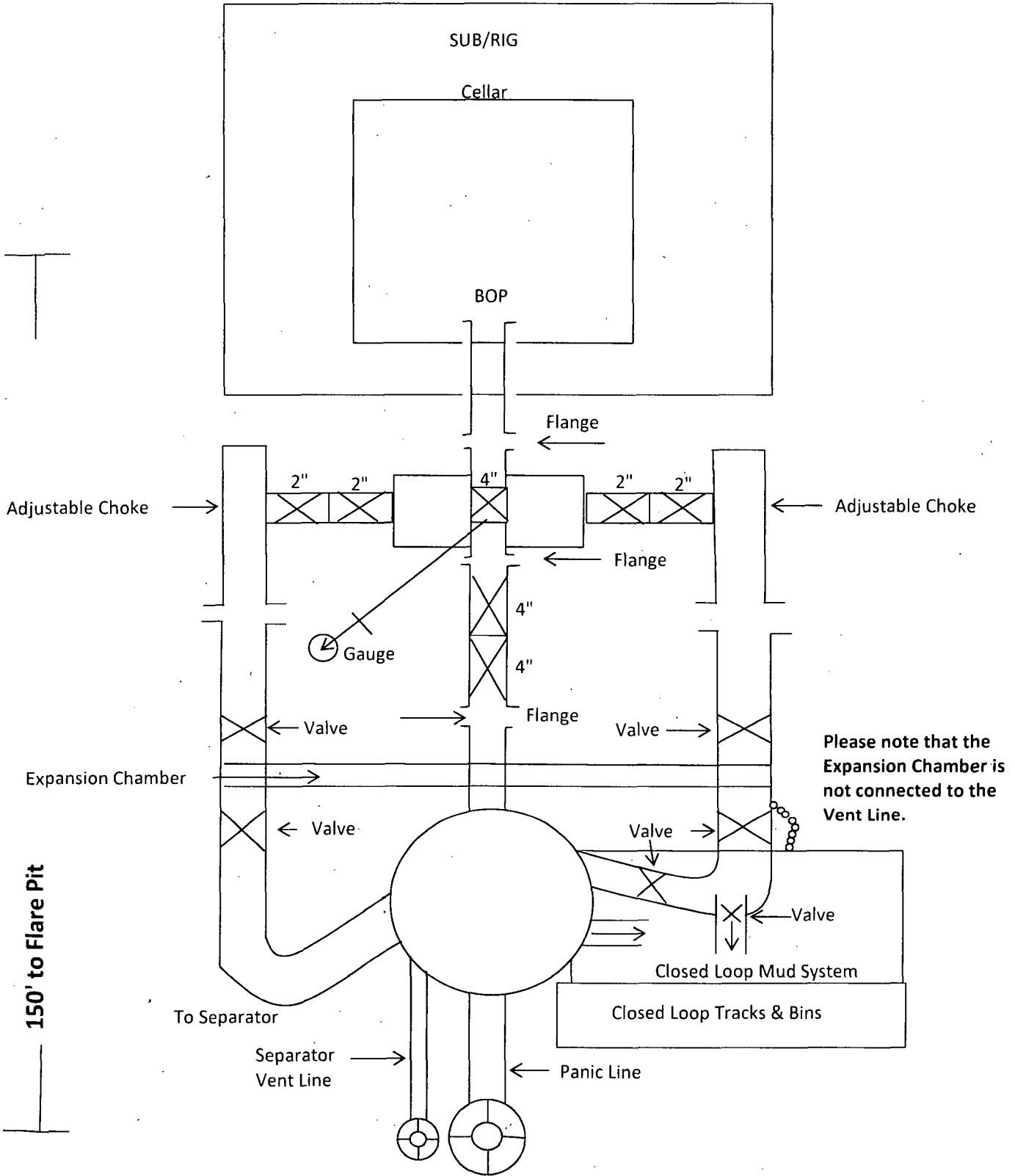
RECEIVED

APR 22 2016

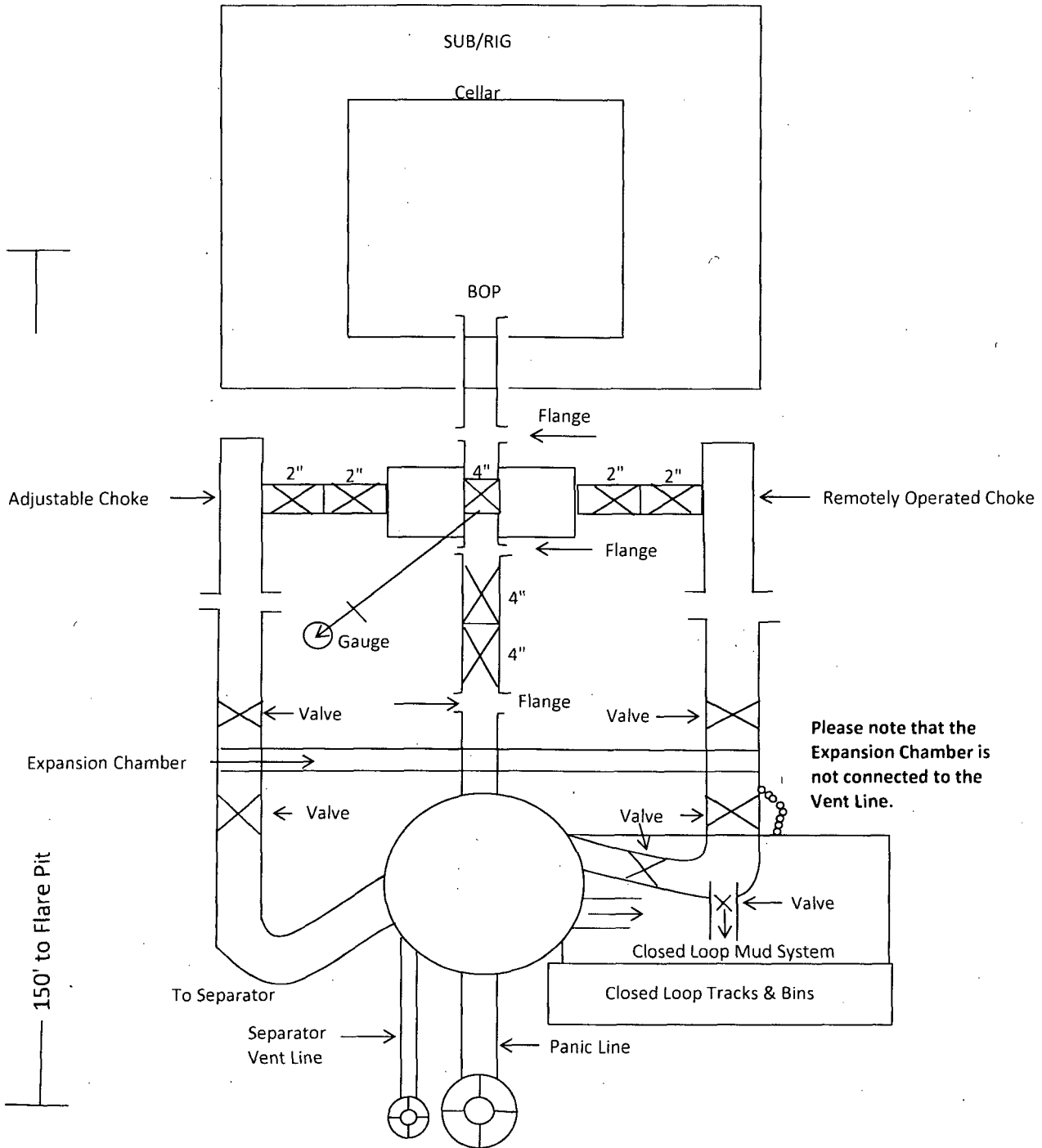
3,000 psi BOP Schematic



2M Choke Manifold Equipment

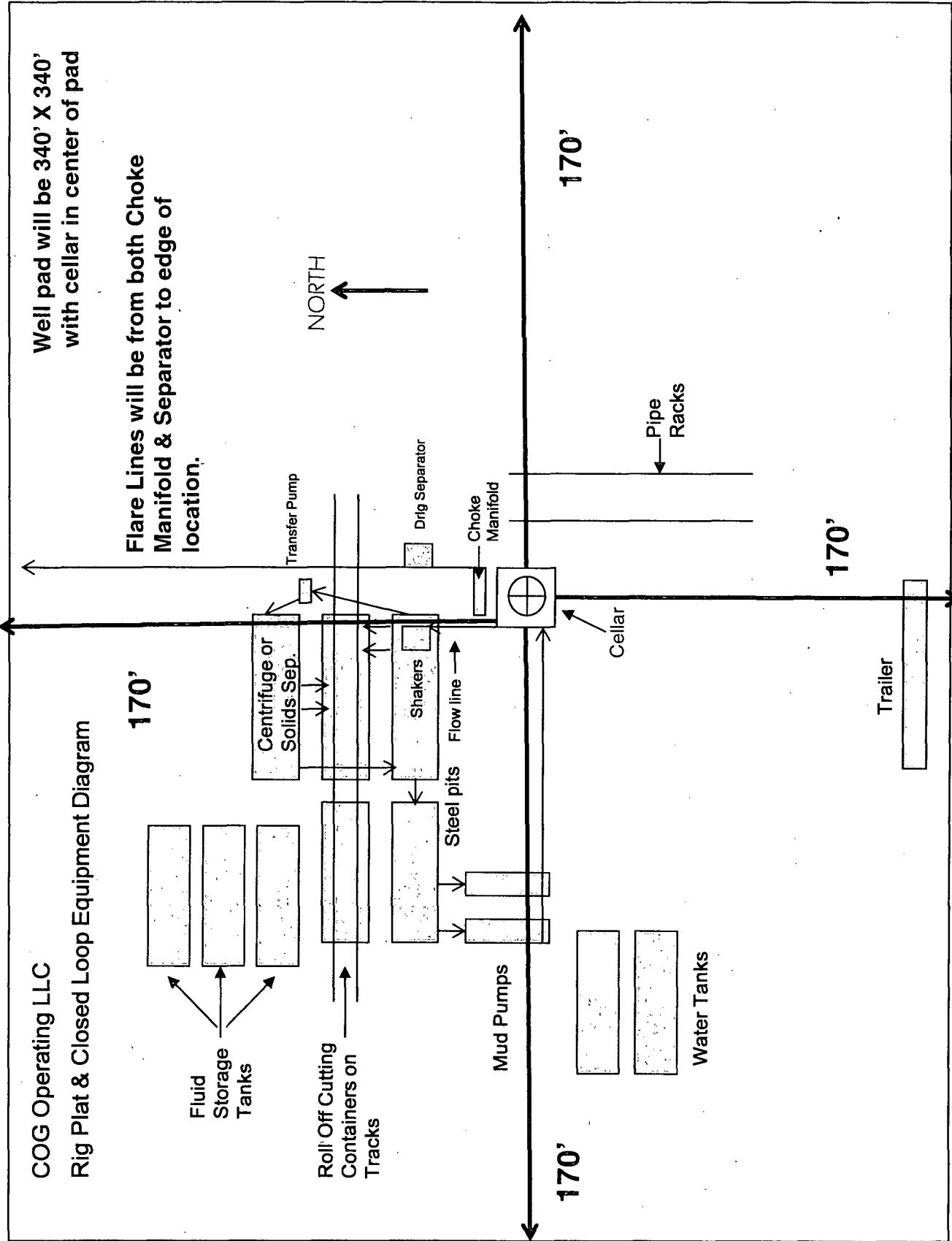


3M Choke Manifold Equipment



COG Operating LLC

Rig Plat & Closed Loop Equipment Diagram

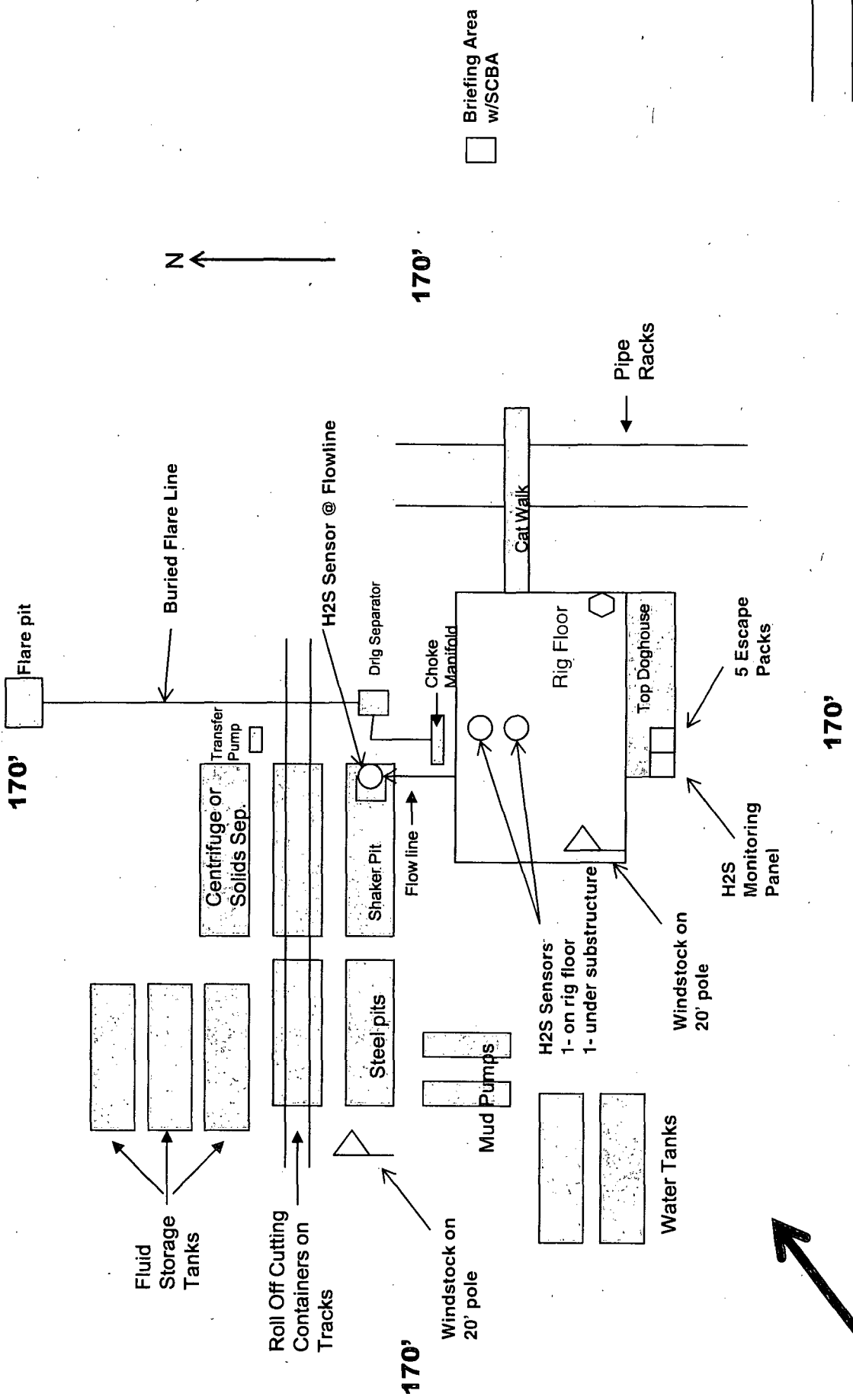


* I further certify that COG will comply with Rule 19.15.17 NMAC by using a Closed Loop System.

COG Operating LLC
 H₂S Equipment Schematic
 Terrain: Shinnery sand hills.

Well pad will be 340' X 340'
 with cellar in center of pad

Secondary egress.



Briefing Area
 w/SCBA

Location Entry
 Condition Sign

Company Representative's Trailer

Primary Briefing
 Area w/SCBA

Prevaling Wind
 Direction in SENM