

APR 21 2016

RECEIVED

Form C-102

Revised August 1, 2011

Submit one copy to appropriate

District Office

DISTRICT I1625 N. FRENCH DR., HOBBS, NM 88240
Phone: (575) 393-6161 Fax: (575) 393-0720**DISTRICT II**611 S. FIRST ST., ARTESIA, NM 88210
Phone: (575) 748-1283 Fax: (575) 748-9720**DISTRICT III**1000 RIO BRAZOS RD., AZTEC, NM 87410
Phone: (505) 334-6178 Fax: (505) 334-6170**DISTRICT IV**1220 S. ST. FRANCIS DR., SANTA FE, NM 87505
Phone: (505) 476-3480 Fax: (505) 476-3482State of New Mexico
Energy, Minerals & Natural Resources Department**OIL CONSERVATION DIVISION**1220 SOUTH ST. FRANCIS DR.
Santa Fe, New Mexico 87505☐ AMENDED REPORT**WELL LOCATION AND ACREAGE DEDICATION PLAT**

API Number 30-025- 43167	Pool Code 96553	Pool Name Ojo Chiso; Bone Spring
Property Code 316103	Property Name SQUINTS FEDERAL COM	Well Number 7H
OGRID No. 229137	Operator Name COG OPERATING, LLC	Elevation 3404.4'

Surface Location

UL or lot No.	Section	Township	Range	Lot Idn	Feet from the	North/South line	Feet from the	East/West line	County
N	27	22-S	34-E		190	SOUTH	2010	WEST	LEA

Bottom Hole Location If Different From Surface

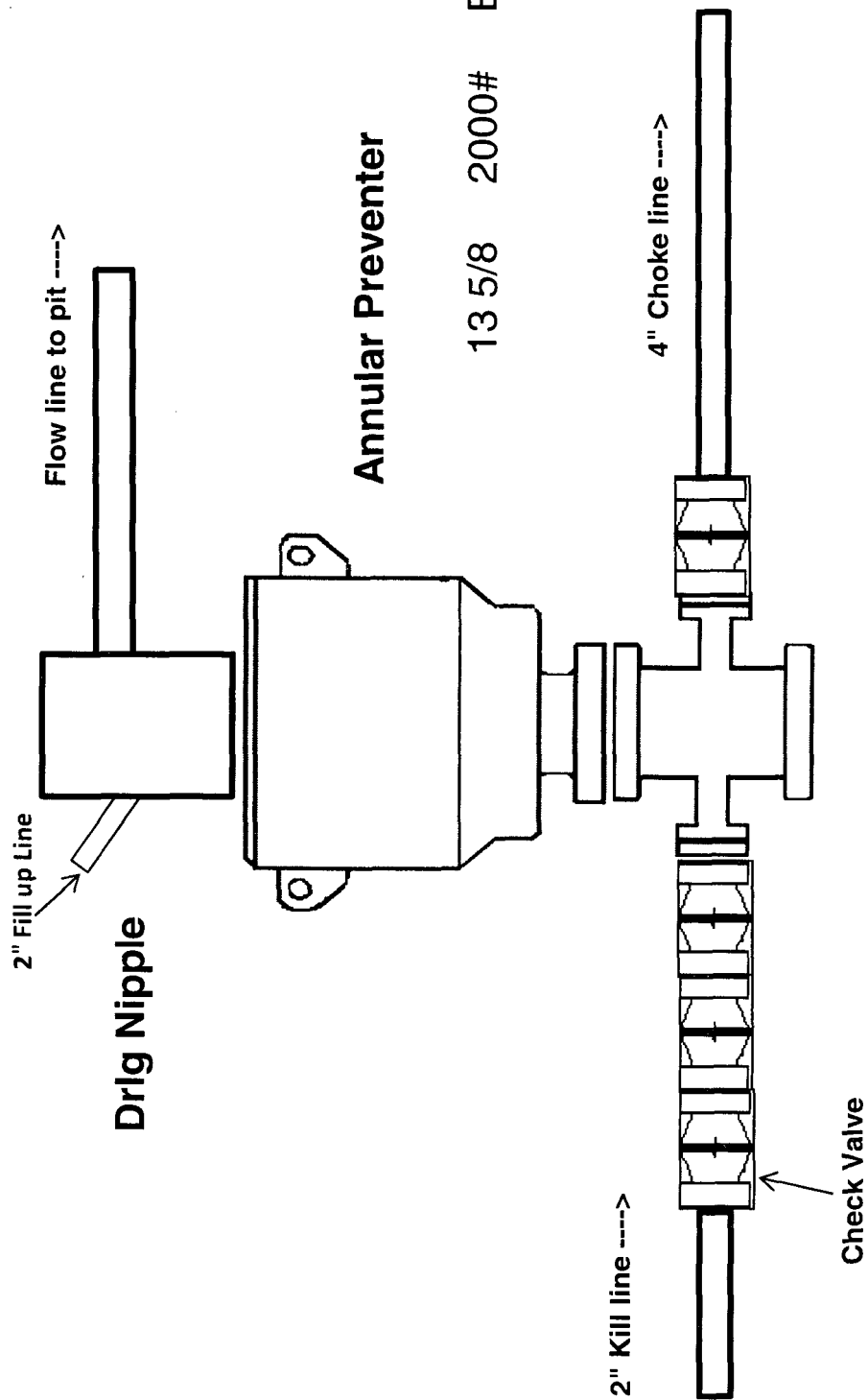
UL or lot No.	Section	Township	Range	Lot Idn	Feet from the	North/South line	Feet from the	East/West line	County
C	22	22-S	34-E		330	NORTH	1980	WEST	LEA
Dedicated Acres 320	Joint or Infill	Consolidation Code	Order No.						

NO ALLOWABLE WILL BE ASSIGNED TO THIS COMPLETION UNTIL ALL INTERESTS HAVE BEEN CONSOLIDATED
OR A NON-STANDARD UNIT HAS BEEN APPROVED BY THE DIVISION

<p>NAD 27 PROPOSED BOTTOM HOLE LOCATION Y=504305.1 N X=769749.2 E LAT.=32.383421° N LONG.=103.459185° W</p> <p>NAD 27 SURFACE LOCATION Y=494263.6 N X=769838.2 E LAT.=32.355819° N LONG.=103.459496° W</p> <p>GRID AZ. = 359°29'31" HORZ. DIST. = 10041.9</p> <p>PRODUCING AREA PROJECT AREA</p> <p>NMNM043565</p> <p>SECTION 22 SECTION 27</p> <p>NMNM043564</p> <p>Y=504628.7 N X=769087.9 E</p> <p>Y=504641.4 N X=770408.6 E</p> <p>Y=494068.1 N X=769150.2 E</p> <p>Y=494078.8 N X=770470.5 E</p> <p>1980'</p> <p>330'</p> <p>B.H.</p> <p>2010'</p>	<p>OPERATOR CERTIFICATION</p> <p>I hereby certify that the information herein is true and complete to the best of my knowledge and belief, and that this organization either owns a working interest or unleased mineral interest in the land including the proposed bottom hole location or has a right to drill this well at this location pursuant to a contract with an owner of such mineral or working interest, or to a voluntary pooling agreement or a compulsory pooling order heretofore entered by the division.</p> <p>Signature <i>Melanie J Wilson</i> Date <i>7/20/15</i></p> <p>Melanie J Wilson</p> <p>Printed Name mwilson@concho.com</p> <p>E-mail Address</p> <p>SURVEYOR CERTIFICATION</p> <p>I hereby certify that the well location shown on this plat was plotted from field notes of actual surveys made by me or under my supervision, and that the same is true and correct to the best of my belief.</p> <p>JANUARY 9, 2015</p> <p>Date of Survey</p> <p>Signature & Seal of Professional Surveyor</p> <p><i>Chad L. Harcrow</i> 6/12/15</p> <p>CHAD L. HARCROW NEW MEXICO 17777 LICENSED PROFESSIONAL SURVEYOR</p> <p>Certificate No. CHAD HARCROW 17777 W.O. # 15-710 DRAWN BY: AF</p>
---	---

APR 25 2016

2,000 psi BOP Schematic

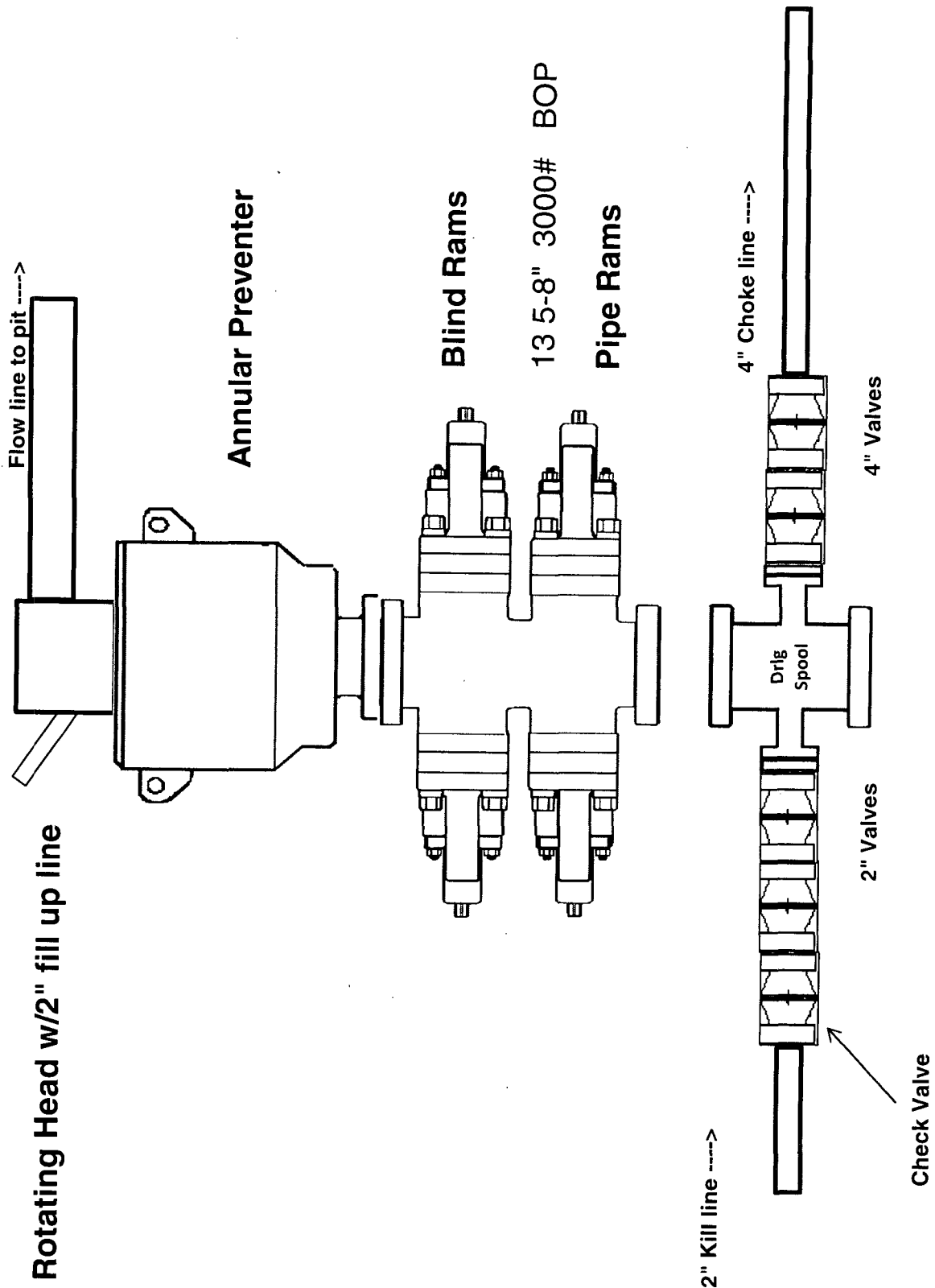


HOBBS OGD

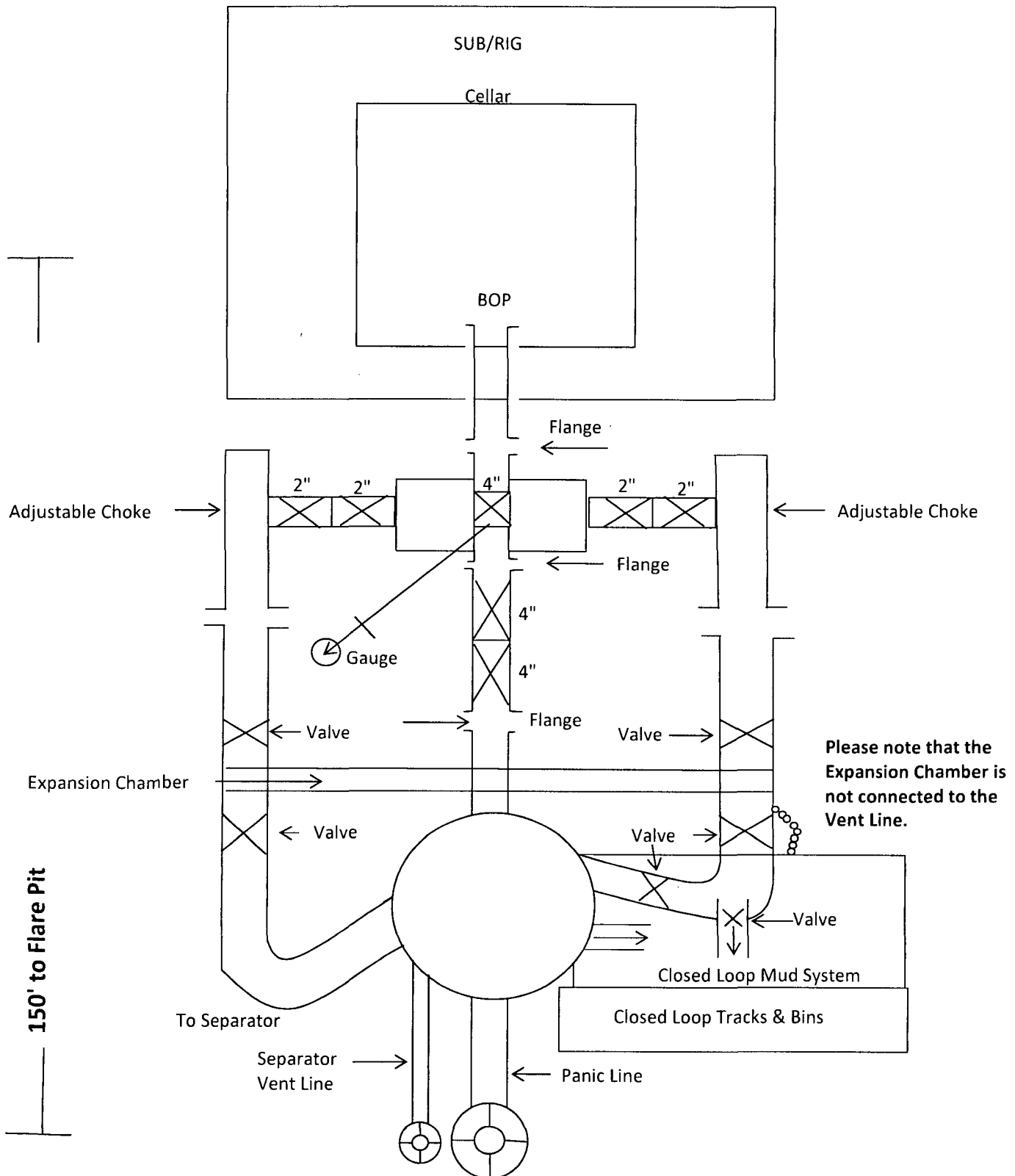
APR 21 2016

RECEIVED

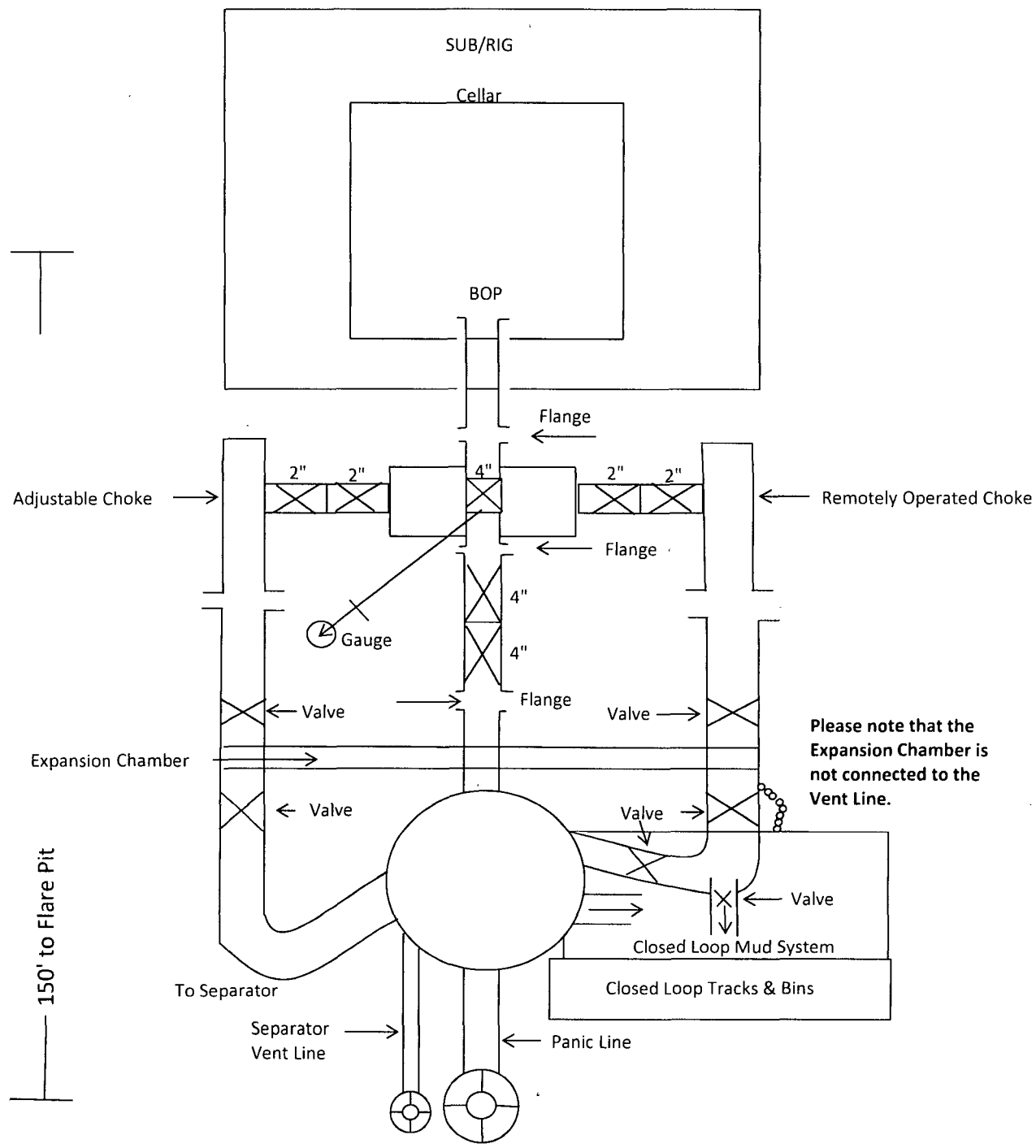
3,000 psi BOP Schematic

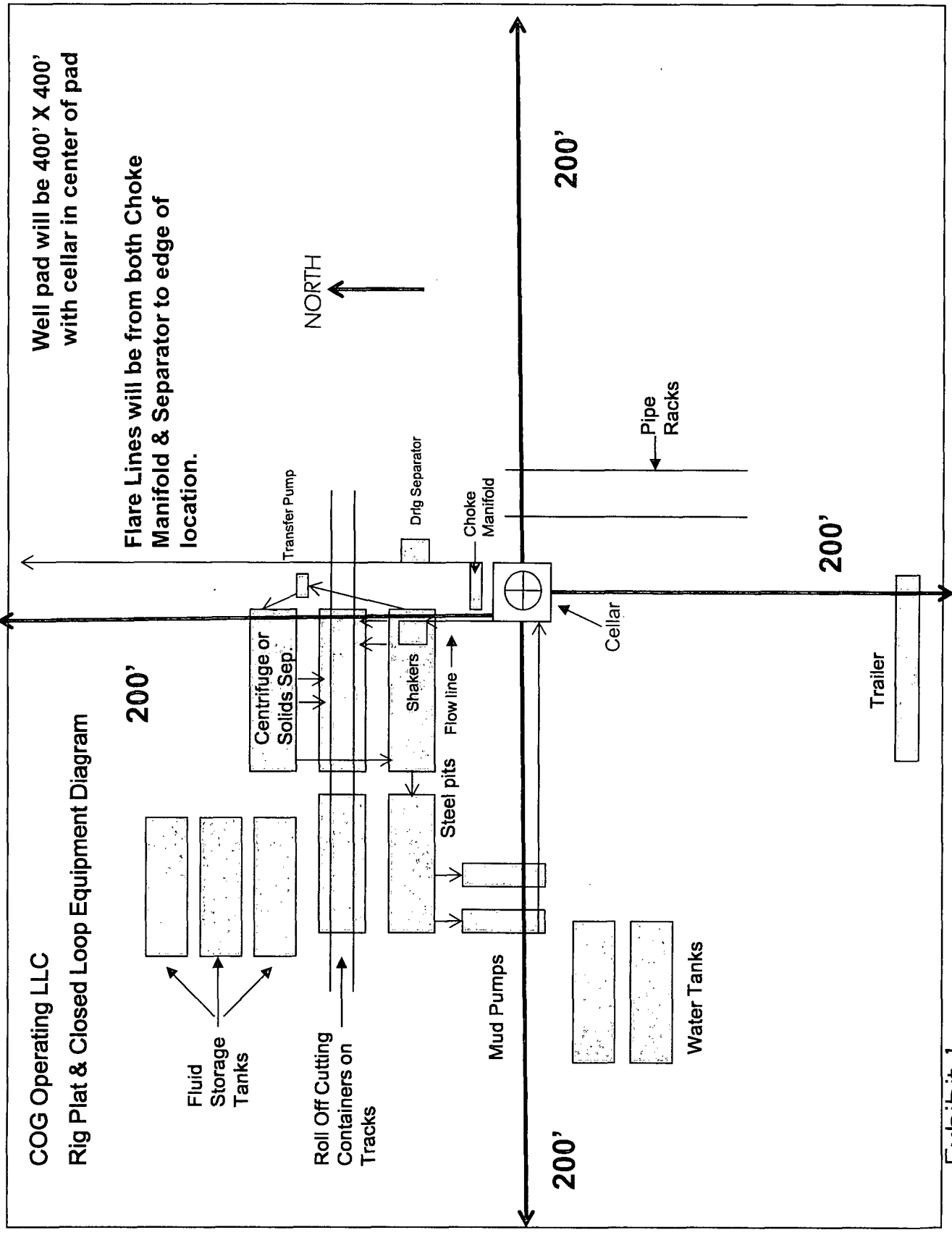


2M Choke Manifold Equipment



3M Choke Manifold Equipment

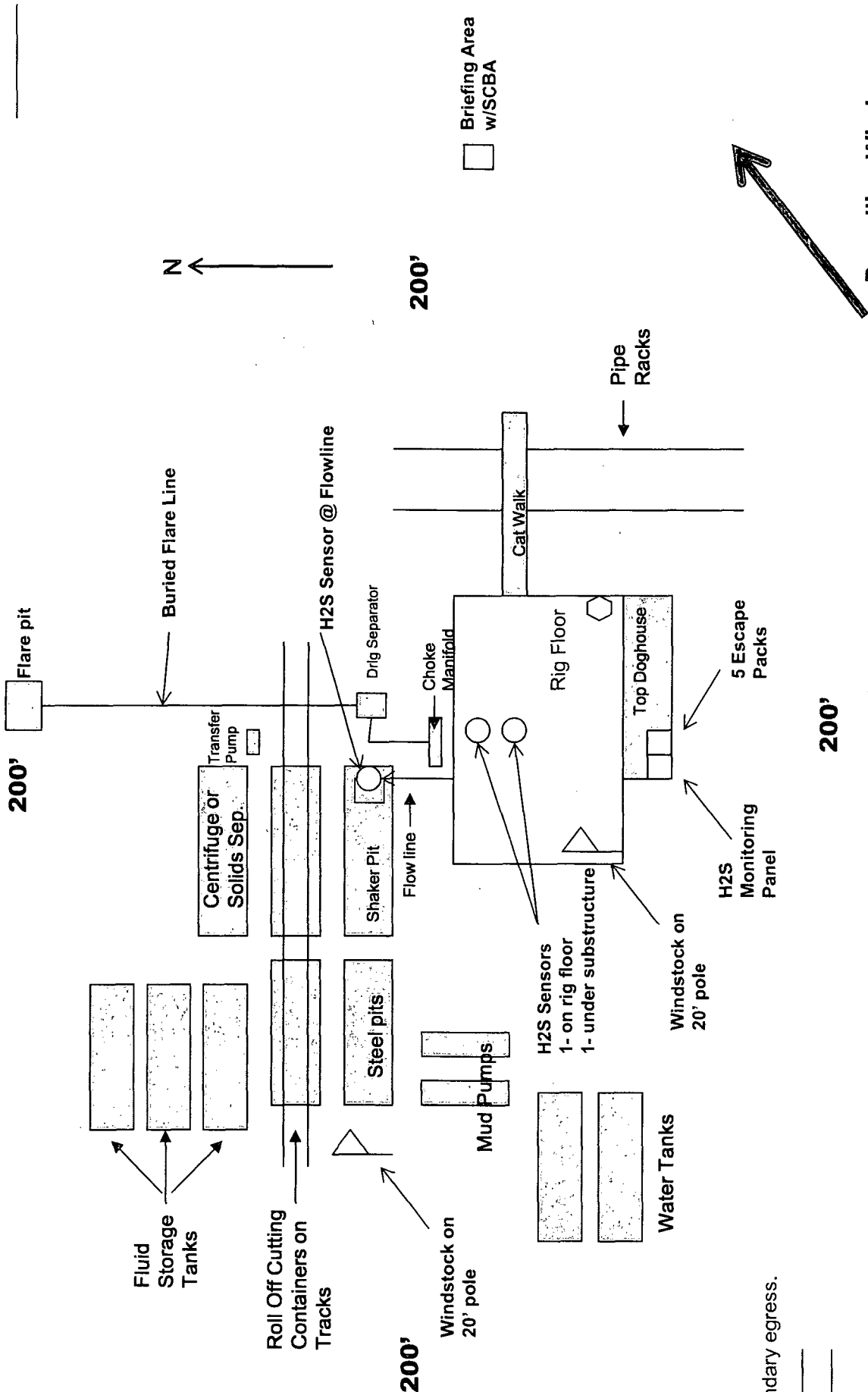




"I further certify that COG will comply with Rule 19.15.17 NMAC by using a Closed Loop System."

COG Operating LLC
H₂S Equipment Schematic
Terrain: Shinnery sand hills.

Well pad will be 400' X 400'
with cellar in center of pad



Prevaling Wind
Direction in SENM

Company Representative's Trailer

Primary Briefing
Area w/SCBA

Secondary egress.