



EOG Resources - Midland

Lea County, NM (NAD 27 NME)
Lomas Rojas 26 State
#502H
OH

Design: OH

EOG PVA

26 February, 2015

HOBBS OCD

JUN 13 2016

RECEIVED



EOG Resources, Inc.
EOG PVA

Company: EOG Resources - Midland
Project: Lea County, NM (NAD 27 NME)
Site: Lomas Rojas 26 State
Well: #502H
Wellbore: OH
Design: OH

Local Co-ordinate Reference:
TVD Reference: KB = 25 @ 3354.0usft (Precision 612)
MD Reference: KB = 25 @ 3354.0usft (Precision 612)
North Reference: Grid
Survey Calculation Method: Minimum Curvature
Database: EDM 5000.1 Single User Db

Project: Lea County, NM (NAD 27 NME)
Map System: US State Plane 1927 (Exact solution)
Geo Datum: NAD 1927 (NADCON CONUS)
Map Zone: New Mexico East 3001

System Datum: Mean Sea Level

Site: Lomas Rojas 26 State

Site Position: Northing: 399,208.00 usft Latitude: 32° 5' 42.127 N
 From: Map Easting: 746,622.00 usft Longitude: 103° 32' 13.033 W
Position Uncertainty: Slot Radius: 13-3/16 " Grid Convergence: 0.42 °

Well: #502H
Well Position: +N/-S 0.0 usft Northing: 399,208.00 usft Latitude: 32° 5' 42.129 N
 +E/-W 0.0 usft Easting: 746,592.00 usft Longitude: 103° 32' 13.382 W
Position Uncertainty: Wellhead Elevation: 0.0 usft Ground Level: 3,329.0 usft

Wellbore: OH

Magnetics	Model Name	Sample Date	Declination (°)	Dip Angle (°)	Field Strength (nT)
	IGRF2015	2/28/2015	7.18	59.98	48,102

Design: OH

Audit Notes: Version: 1.0 Phase: ACTUAL Tie On Depth: 0.0

Vertical Section:	Depth From (TVD) (usft)	+N/-S (usft)	+E/-W (usft)	Direction (°)
	0.0	0.0	0.0	355.27

Survey Program	From (usft)	To (usft)	Date	Tool Name	Description
	185.0	15,585.0	2/26/2015	MWD	MWD - Standard
				Dritech MWD #1 (OH)	



EOG Resources, Inc.
EOG PVA

Company: EOG Resources - Midland
 Project: Lea County, NM (NAD 27 NME)
 Site: Lomas Rojas 26 State
 Well: #502H
 Wellbore: OH
 Design: OH

Local Co-ordinate Reference:
 TVD Reference:
 MD Reference:
 North Reference:
 Survey Calculation Method:
 Database:

Well #502H
 KB = 25 @ 3354.0usft (Precision 612)
 KB = 25 @ 3354.0usft (Precision 612)
 Grid
 Minimum Curvature
 EDM 5000.1 Single User Db

MD (usft)	Inc (°)	Azi (grid_north_azim)	TVD (usft)	N/S (usft)	E/W (usft)	DLeg (°/100usft)	Build (°/100usft)	Turn (°/100usft)	High to Plan (usft)	Right to Plan (usft)
0.0	0.00	0.00	0.0	0.0	0.0	0.00	0.00	0.00	0.00	0.0
185.0	0.40	194.70	185.0	-0.6	-0.2	0.22	0.22	0.00	0.00	-0.6
248.0	0.40	106.20	248.0	-0.9	0.0	0.89	0.00	-140.48	-0.2	-0.2
343.0	0.40	32.20	343.0	-0.7	0.5	0.51	0.00	-77.89	0.3	-0.8
437.0	0.70	53.90	437.0	-0.1	1.1	0.38	0.32	23.09	-0.9	-0.7
529.0	1.40	53.90	529.0	0.9	2.5	0.76	0.76	0.00	-2.5	-0.7
620.0	1.20	29.80	620.0	2.4	3.9	0.63	-0.22	-26.48	-4.0	-2.2
711.0	1.60	21.50	710.9	4.4	4.8	0.49	0.44	-9.12	-5.8	-2.9
801.0	1.20	15.40	800.9	6.5	5.5	0.47	-0.44	-6.78	-7.7	-3.6
892.0	1.40	30.80	891.9	8.3	6.3	0.44	0.22	16.92	-10.4	-1.2
982.0	1.20	32.20	981.9	10.1	7.4	0.22	-0.22	1.56	-12.5	-0.9
1,057.0	1.40	34.70	1,056.8	11.5	8.3	0.28	0.27	3.33	-14.2	-0.3
1,173.0	1.80	24.00	1,172.8	14.3	9.9	0.43	0.34	-9.22	-17.1	-3.2
1,265.0	0.50	358.10	1,264.8	16.1	10.5	1.49	-1.41	-28.15	-15.7	-11.3
1,358.0	1.20	249.30	1,357.8	16.1	9.5	1.55	0.75	-116.99	15.7	-11.3
1,450.0	1.80	249.70	1,449.7	15.3	7.3	0.65	0.65	0.43	14.0	-11.1
1,543.0	1.80	258.30	1,542.7	14.5	4.5	0.29	0.00	9.25	10.0	-12.7
1,635.0	1.90	257.20	1,634.6	13.8	1.6	0.12	0.11	-1.20	8.1	-12.3
1,728.0	1.60	244.60	1,727.6	12.9	-1.1	0.52	-0.32	-13.55	8.5	-10.3
1,820.0	1.40	224.70	1,819.6	11.6	-3.1	0.60	-0.22	-21.63	9.8	-6.6
1,913.0	1.60	227.70	1,912.5	9.9	-4.8	0.23	0.22	3.23	7.6	-6.5
2,005.0	1.60	214.30	2,004.5	8.0	-6.5	0.41	0.00	-14.57	6.8	-4.2
2,097.0	1.80	220.10	2,096.5	5.8	-8.1	0.29	0.22	6.30	4.1	-4.1
2,190.0	1.20	215.40	2,189.4	3.9	-9.6	0.66	-0.65	-5.05	2.5	-3.2
2,282.0	0.70	189.40	2,281.4	2.6	-10.3	0.70	-0.54	-28.26	2.4	-1.4
2,374.0	0.70	184.10	2,373.4	1.4	-10.4	0.07	0.00	-5.76	1.4	-0.6
2,466.0	0.70	137.40	2,465.4	0.5	-10.1	0.60	0.00	-50.76	0.4	0.3



EOG Resources, Inc.
EOG PVA

Company: EOG Resources - Midland
 Project: Lea County, NM (NAD 27 NME)
 Site: Lomas Rojas 28 State
 Well: #502H
 Wellbore: OH
 Design: OH

Local Co-ordinate Reference:
 TVD Reference:
 MD Reference:
 North Reference:
 Survey Calculation Method:
 Database:

Well #502H
 KB = 25 @ 3354.0usft (Precision 612)
 KB = 25 @ 3354.0usft (Precision 612)
 Grid
 Minimum Curvature
 EDM 5000.1 Single User Db

Survey	MD (usft)	Inc (°)	Azi (grid_north_azim)	TVD (usft)	N/S (usft)	E/W (usft)	DLeg (°/100usft)	Build (°/100usft)	Turn (°/100usft)	High to Plan (usft)	Right to Plan (usft)
	2,559.0	0.70	111.20	2,558.4	-0.1	-9.2	0.34	0.00	-28.17	-0.8	0.2
	2,651.0	1.10	80.60	2,650.4	-0.2	-7.8	0.67	0.43	-33.26	-2.2	-0.6
	2,743.0	1.20	70.70	2,742.4	0.3	-6.0	0.24	0.11	-10.76	-3.9	-1.1
	2,835.0	0.90	78.70	2,834.3	0.7	-4.4	0.37	-0.33	9.78	-5.7	-0.3
	2,928.0	1.40	84.40	2,927.3	0.9	-2.5	0.55	0.54	5.05	-7.5	0.2
	3,020.0	1.40	89.20	3,019.3	1.1	-0.3	0.13	0.00	5.22	-9.7	0.9
	3,112.0	0.90	102.40	3,111.3	0.9	1.5	0.61	-0.54	14.35	-11.1	3.4
	3,205.0	0.20	165.00	3,204.3	0.6	2.3	0.89	-0.75	67.31	-2.6	12.0
	3,297.0	0.20	244.80	3,296.3	0.4	2.2	0.28	0.00	86.74	11.2	4.8
	3,389.0	0.40	304.70	3,388.3	0.5	1.8	0.38	0.22	65.11	9.4	-7.1
	3,482.0	0.70	316.10	3,481.3	1.1	1.1	0.34	0.32	12.26	6.9	-8.8
	3,574.0	0.50	246.90	3,573.3	1.3	0.4	0.76	-0.22	-75.22	10.1	2.8
	3,666.0	0.70	280.10	3,665.3	1.3	-0.6	0.43	0.22	36.09	9.1	-2.9
	3,759.0	1.10	271.10	3,758.2	1.4	-2.0	0.45	0.43	-9.68	8.0	-1.6
	3,851.0	0.70	272.20	3,850.2	1.4	-3.5	0.44	-0.43	1.20	6.5	-1.7
	3,943.0	0.70	351.80	3,942.2	2.0	-4.1	0.97	0.00	86.52	-1.2	-6.1
	4,035.0	1.10	19.10	4,034.2	3.4	-3.9	0.63	0.43	29.67	-5.2	-4.7
	4,128.0	1.20	18.70	4,127.2	5.2	-3.3	0.11	0.11	-0.43	-7.1	-4.7
	4,220.0	1.10	359.00	4,219.2	7.0	-3.0	0.44	-0.11	-21.41	-6.9	-7.1
	4,312.0	1.10	321.20	4,311.2	8.5	-3.6	0.77	0.00	-41.09	-2.6	-10.4
	4,405.0	0.90	255.10	4,404.2	9.1	-4.8	1.19	-0.22	-71.08	7.3	-7.4
	4,497.0	0.70	206.30	4,496.1	8.4	-5.8	0.75	-0.22	-53.04	9.4	0.1
	4,590.0	0.90	210.80	4,589.1	7.2	-6.4	0.23	0.22	4.84	8.1	-0.6
	4,682.0	1.10	165.00	4,681.1	5.8	-6.5	0.87	0.22	-46.78	4.7	4.8
	4,774.0	1.60	220.00	4,773.1	3.9	-7.1	1.44	0.54	59.78	4.8	-0.3
	4,867.0	1.90	224.40	4,866.1	1.8	-9.0	0.35	0.32	4.73	2.0	-0.6
	5,032.0	2.10	209.60	5,031.0	-2.8	-12.5	0.33	0.12	-8.97	-3.6	-0.8



EOG Resources, Inc.
EOG PVA

Company: EOG Resources - Midland
 Project: Lea County, NM (NAD 27 NME)
 Site: Lomas Rojas 26 State
 Well: #502H
 Wellbore: OH
 Design: OH

Local Co-ordinate Reference:
 TVD Reference:
 MD Reference:
 North Reference:
 Survey Calculation Method:
 Database:

Well #502H
 KB = 25 @ 3354.0usft (Precision 612)
 KB = 25 @ 3354.0usft (Precision 612)
 Grid
 Minimum Curvature
 EDM 5000.1 Single User Db

MD (usft)	Inc (")	Azi (grid_north_azim)	TVD (usft)	N/S (usft)	E/W (usft)	DLeg (°/100usft)	Build (°/100usft)	Turn (°/100usft)	High to Plan (usft)	Right to Plan (usft)
5,125.0	2.10	233.50	5,123.9	-5.3	-14.7	0.93	0.00	25.70	-6.8	1.4
5,217.0	2.50	245.80	5,215.8	-7.1	-17.8	0.69	0.43	13.37	-8.9	2.9
5,309.0	3.30	245.30	5,307.7	-9.0	-22.1	0.87	0.87	-0.54	-11.2	2.0
5,402.0	4.40	246.20	5,400.5	-11.6	-27.8	1.18	1.18	0.97	-13.5	0.9
5,494.0	4.60	235.80	5,492.2	-15.1	-34.1	0.91	0.22	-11.30	-15.0	-3.0
5,586.0	5.10	231.60	5,583.9	-19.7	-40.3	0.67	0.54	-4.57	-15.5	-4.9
5,678.0	4.90	228.90	5,675.5	-24.8	-46.5	0.34	-0.22	-2.93	-15.5	-6.0
5,771.0	5.80	232.30	5,768.1	-30.3	-53.2	1.03	0.97	3.66	-16.7	-5.5
5,863.0	6.70	233.30	5,859.6	-36.3	-61.2	0.99	0.98	1.09	-19.0	-5.9
5,956.0	6.70	232.60	5,951.9	-42.9	-69.8	0.09	0.00	-0.75	-22.0	-6.9
6,048.0	6.50	233.00	6,043.3	-49.3	-78.3	0.22	-0.22	0.43	-24.9	-7.5
6,140.0	6.50	233.70	6,134.7	-55.5	-86.6	0.09	0.00	0.76	-27.7	-8.0
6,233.0	6.30	233.00	6,227.2	-61.7	-94.9	0.23	-0.22	-0.75	-30.1	-9.1
6,325.0	6.90	228.80	6,318.6	-68.3	-103.2	0.76	0.65	-3.48	-32.4	-11.4
6,417.0	7.90	228.10	6,409.8	-76.1	-112.1	1.11	1.09	-1.85	-36.1	-12.6
6,510.0	8.10	228.60	6,501.9	-84.7	-121.8	0.23	0.22	0.54	-41.3	-12.4
6,602.0	8.10	228.20	6,593.0	-93.3	-131.5	0.06	0.00	-0.43	-46.4	-12.8
6,694.0	8.40	228.90	6,684.0	-102.0	-141.4	0.34	0.33	0.76	-52.0	-12.4
6,786.0	8.30	224.00	6,775.0	-111.2	-151.0	0.78	-0.11	-5.33	-56.4	-16.9
6,879.0	7.70	220.70	6,867.1	-120.8	-159.8	0.81	-0.65	-3.55	-60.5	-19.6
6,971.0	7.60	220.50	6,958.3	-130.1	-167.7	0.11	-0.11	-0.22	-65.0	-18.8
7,064.0	7.70	221.70	7,050.5	-139.4	-175.9	0.20	0.11	1.29	-69.9	-16.6
7,156.0	7.60	223.10	7,141.7	-148.4	-184.1	0.23	-0.11	1.52	-74.8	-14.1
7,249.0	7.60	224.40	7,233.9	-157.3	-192.6	0.18	0.00	1.40	-79.6	-11.9
7,341.0	7.40	224.50	7,325.1	-165.9	-201.1	0.22	-0.22	0.11	-83.9	-11.3
7,433.0	7.20	224.50	7,416.3	-174.2	-209.2	0.22	-0.22	0.00	-87.8	-10.9
7,526.0	7.40	226.30	7,508.6	-182.5	-217.7	0.33	0.22	1.94	-92.1	-7.8



EOG Resources, Inc.
EOG PVA

Company: EOG Resources - Midland
 Project: Lea County, NM (NAD 27 NME)
 Site: Lomas Rojas 26 State
 Well: #502H
 Wellbore: OH
 Design: OH

Local Co-ordinate Reference:
 TVD Reference:
 MD Reference:
 North Reference:
 Survey Calculation Method:
 Database:

Well #502H
 KB = 25 @ 3354.0usft (Precision 612)
 KB = 25 @ 3354.0usft (Precision 612)
 Grid
 Minimum Curvature
 EDM 5000.1 Single User Db

Survey	MD (usft)	Inc (°)	Azi (grid_north_azim)	TVD (usft)	N/S (usft)	E/W (usft)	DLeg (°/100usft)	Build (°/100usft)	Turn (°/100usft)	High to Plan (usft)	Right to Plan (usft)
	7,618.0	7.20	227.70	7,599.8	-190.5	-226.2	0.29	-0.22	1.52	-96.2	-5.5
	7,711.0	7.40	226.80	7,692.1	-198.5	-234.9	0.25	0.22	-0.97	-100.0	-7.0
	7,803.0	6.90	228.60	7,783.4	-206.2	-243.3	0.60	-0.54	1.96	-103.9	-3.8
	7,895.0	6.00	227.20	7,874.8	-213.1	-251.0	0.99	-0.98	-1.52	-106.3	-6.4
	7,987.0	5.30	226.50	7,966.3	-219.3	-257.6	0.76	-0.76	-0.76	-107.5	-7.6
	8,080.0	4.90	225.80	8,059.0	-225.1	-263.6	0.44	-0.43	-0.75	-107.8	-8.8
	8,172.0	4.60	224.40	8,150.6	-230.4	-269.0	0.35	-0.33	-1.52	-107.4	-11.1
	8,264.0	4.40	222.30	8,242.4	-235.7	-274.0	0.28	-0.22	-2.28	-106.4	-14.4
	8,357.0	4.00	220.50	8,335.1	-240.8	-278.5	0.45	-0.43	-1.94	-104.9	-16.9
	8,449.0	4.20	221.90	8,426.9	-245.7	-282.8	0.24	0.22	1.52	-104.1	-13.5
	8,541.0	4.60	222.40	8,518.6	-251.0	-287.5	0.44	0.43	0.54	-103.5	-11.9
	8,634.0	4.00	221.20	8,611.3	-256.2	-292.2	0.65	-0.65	-1.29	-102.4	-13.3
	8,726.0	3.90	221.90	8,703.1	-260.9	-296.4	0.12	-0.11	0.76	-101.2	-11.3
	8,819.0	3.70	219.40	8,795.9	-265.6	-300.4	0.28	-0.22	-2.69	-98.9	-14.7
	8,911.0	1.80	239.30	8,887.8	-268.6	-303.5	2.28	-2.07	21.63	-94.7	19.2
	9,003.0	1.60	236.70	8,979.8	-270.1	-305.8	0.23	-0.22	-2.83	-90.5	13.6
	9,096.0	1.60	224.90	9,072.7	-271.7	-307.8	0.35	0.00	-12.69	-86.1	-5.1
	9,188.0	1.40	229.30	9,164.7	-273.3	-309.6	0.25	-0.22	4.78	-80.8	1.4
	9,281.0	1.40	223.70	9,257.7	-274.9	-311.2	0.15	0.00	-6.02	-75.0	-6.1
	9,373.0	1.40	224.20	9,349.6	-276.5	-312.8	0.01	0.00	0.54	-69.5	-5.0
	9,466.0	1.10	224.40	9,442.6	-278.0	-314.2	0.32	-0.32	0.22	-63.7	-4.3
	9,558.0	0.90	233.50	9,534.6	-279.0	-315.4	0.28	-0.22	9.89	-57.4	5.1
	9,650.0	0.70	214.00	9,626.6	-279.9	-316.3	0.36	-0.22	-21.20	-49.5	-12.8
	9,743.0	0.90	202.40	9,719.6	-281.1	-316.9	0.28	0.22	-12.47	-40.1	-19.2
	9,835.0	1.20	154.90	9,811.6	-282.6	-316.8	0.97	0.33	-51.63	-12.0	-35.6
	9,928.0	1.60	163.00	9,904.5	-284.7	-316.0	0.48	0.43	8.71	-15.8	-26.3
	10,020.0	1.60	171.80	9,996.5	-287.2	-315.4	0.27	0.00	9.57	-17.8	-17.0



EOG Resources, Inc.
EOG PVA

Company: EOG Resources - Midland
 Project: Lea County, NM (NAD 27 NME)
 Site: Lomas Rojas 26 State
 Well: #502H
 Wellbore: OH
 Design: OH

Local Co-ordinate Reference:
 TVD Reference:
 MD Reference:
 North Reference:
 Survey Calculation Method:
 Database:

Well #502H
 KB = 25 @ 3354.0usft (Precision 612)
 KB = 25 @ 3354.0usft (Precision 612)
 Grid
 Minimum Curvature
 EDM 5000.1 Single User Db

MD (usft)	Inc (°)	Azi (grid_north_azim)	TVD (usft)	N/S (usft)	E/W (usft)	DLeg (°/100usft)	Build (°/100usft)	Turn (°/100usft)	High to Plan (usft)	Right to Plan (usft)
10,113.0	1.80	187.50	10,089.5	-290.0	-315.4	0.54	0.22	16.88	-18.4	-6.2
10,237.0	1.40	209.10	10,213.4	-293.2	-316.4	0.58	-0.32	17.42	-12.7	5.1
10,283.0	2.50	336.20	10,259.4	-292.8	-317.1	7.66	2.39	276.30	11.0	4.4
10,329.0	8.10	350.40	10,305.2	-288.7	-318.1	12.41	12.17	30.87	10.3	-0.6
10,376.0	12.30	0.60	10,351.4	-280.4	-318.6	9.69	8.94	21.70	7.8	-4.8
10,422.0	15.50	0.20	10,396.1	-269.3	-318.5	6.96	6.96	-0.87	6.3	-7.6
10,468.0	18.10	350.90	10,440.1	-256.1	-319.6	8.11	5.65	-20.22	7.6	-8.3
10,514.0	23.00	349.20	10,483.2	-240.2	-322.4	10.73	10.65	-3.70	8.4	-8.0
10,560.0	28.30	347.20	10,524.6	-220.8	-326.5	11.67	11.52	-4.35	8.8	-6.3
10,606.0	32.40	346.40	10,564.3	-198.2	-331.8	8.96	8.91	-1.74	8.7	-3.6
10,653.0	37.10	343.90	10,602.9	-172.3	-338.7	10.45	10.00	-5.32	8.6	1.0
10,699.0	42.80	346.20	10,638.2	-143.7	-346.3	12.80	12.39	5.00	8.0	5.8
10,745.0	48.40	350.60	10,670.4	-111.6	-352.8	13.96	12.17	9.57	6.9	9.4
10,791.0	54.50	355.30	10,699.0	-75.9	-357.2	15.48	13.26	10.22	5.1	11.1
10,837.0	58.90	357.60	10,724.3	-37.5	-359.6	10.44	9.57	5.00	2.3	11.2
10,873.1	61.18	356.89	10,742.3	-6.3	-361.1	6.53	6.30	-1.97	0.3	11.2
HL Crossing, MD:10873.1', TVD:10742.3', N/S:-6.3', E/W:-361.1', INC:61.18										
10,883.0	61.80	356.70	10,747.0	2.4	-361.5	6.53	6.31	-1.91	-0.1	11.3
10,930.0	66.00	357.30	10,767.7	44.5	-363.7	9.01	8.94	1.28	-1.4	11.8
10,976.0	70.20	359.90	10,784.9	87.2	-364.8	10.53	9.13	5.65	-2.3	11.4
11,022.0	73.40	359.90	10,799.2	130.9	-364.9	6.96	6.96	0.00	-2.7	10.3
11,068.0	77.90	359.00	10,810.6	175.4	-365.3	9.96	9.78	-1.96	-2.5	9.7
11,147.0	87.10	2.50	10,820.9	253.6	-364.2	12.44	11.65	4.43	-2.8	7.4
11,239.0	89.70	2.20	10,823.5	345.5	-360.5	2.84	2.83	-0.33	-1.8	2.9
11,331.0	90.40	1.10	10,823.4	437.5	-357.8	1.42	0.76	-1.20	-2.2	-0.4
11,423.0	90.80	0.90	10,822.5	529.5	-356.2	0.49	0.43	-0.22	-3.6	-2.7
11,516.0	89.90	0.20	10,821.9	622.5	-355.3	1.23	-0.97	-0.75	-4.6	-4.3



EOG Resources, Inc.
EOG PVA

Company: EOG Resources - Midland
 Project: Lea County, NM (NAD 27 NME)
 Site: Lomas Rojas 26 State
 Well: #502H
 Wellbore: OH
 Design: OH

Local Co-ordinate Reference:
 TVD Reference:
 MD Reference:
 North Reference:
 Survey Calculation Method:
 Database:

Well #502H
 KB = 25 @ 3354.0usft (Precision 612)
 KB = 25 @ 3354.0usft (Precision 612)
 Grid
 Minimum Curvature
 EDM 5000.1 Single User Db

MD (usft)	Inc (°)	Azi (grid_north_azim)	TVD (usft)	N/S (usft)	E/W (usft)	DLeg (°/100usft)	Build (°/100usft)	Turn (°/100usft)	High to Plan (usft)	Right to Plan (usft)
11,608.0	89.40	0.10	10,822.5	714.5	-355.1	0.55	-0.54	-0.11	-4.4	-5.2
11,700.0	89.20	359.90	10,823.6	806.4	-355.1	0.31	-0.22	-0.22	-3.7	-5.9
11,793.0	89.40	359.70	10,824.7	899.4	-355.4	0.30	0.22	-0.22	-3.0	-6.3
11,885.0	89.20	359.50	10,825.8	991.4	-356.0	0.31	-0.22	-0.22	-2.2	-6.3
11,977.0	88.70	359.50	10,827.5	1,083.4	-356.8	0.54	-0.54	0.00	-0.6	-6.2
12,069.0	89.00	0.20	10,829.4	1,175.4	-357.1	0.83	0.33	0.76	1.2	-6.6
12,162.0	89.70	0.20	10,830.4	1,268.4	-356.8	0.75	0.75	0.00	2.1	-7.7
12,254.0	90.40	1.10	10,830.3	1,360.4	-355.7	1.24	0.76	0.98	1.9	-9.4
12,346.0	90.40	0.90	10,829.7	1,452.4	-354.1	0.22	0.00	-0.22	1.2	-11.7
12,439.0	90.30	1.10	10,829.1	1,545.3	-352.5	0.24	-0.11	0.22	0.6	-14.0
12,531.0	89.90	1.30	10,829.0	1,637.3	-350.6	0.49	-0.43	0.22	0.3	-16.6
12,624.0	90.10	0.60	10,829.0	1,730.3	-349.0	0.78	0.22	-0.75	0.2	-18.8
12,716.0	92.20	359.90	10,827.1	1,822.3	-348.6	2.41	2.28	-0.76	-1.7	-19.9
12,808.0	91.50	359.40	10,824.2	1,914.2	-349.2	0.93	-0.76	-0.54	-4.8	-20.0
12,901.0	90.30	359.90	10,822.7	2,007.2	-349.8	1.40	-1.29	0.54	-6.3	-20.2
12,993.0	89.20	0.10	10,823.1	2,099.2	-349.8	1.22	-1.20	0.22	-6.0	-20.8
13,086.0	89.00	0.80	10,824.6	2,192.2	-349.0	0.78	-0.22	0.75	-4.7	-22.3
13,178.0	88.90	0.80	10,826.2	2,284.2	-347.7	0.11	-0.11	0.00	-3.1	-24.2
13,270.0	88.70	0.10	10,828.2	2,376.2	-347.0	0.79	-0.22	-0.76	-1.2	-25.6
13,362.0	89.40	359.40	10,829.7	2,468.1	-347.4	1.08	0.76	-0.76	0.2	-25.9
13,455.0	90.10	358.30	10,830.1	2,561.1	-349.3	1.40	0.75	-1.18	0.5	-24.7
13,547.0	90.40	358.10	10,829.7	2,653.1	-352.2	0.39	0.33	-0.22	0.0	-22.5
13,639.0	91.30	358.50	10,828.3	2,745.0	-354.9	1.07	0.98	0.43	-1.4	-20.5
13,731.0	91.70	359.00	10,825.9	2,837.0	-356.9	0.70	0.43	0.54	-3.9	-19.1
13,824.0	91.70	359.00	10,823.2	2,929.9	-358.5	0.00	0.00	0.00	-6.8	-18.2
13,916.0	91.10	358.70	10,820.9	3,021.9	-360.4	0.73	-0.65	-0.33	-9.3	-17.0
14,008.0	89.20	358.50	10,820.7	3,113.8	-362.6	2.08	-2.07	-0.22	-10.1	-15.5



EOG Resources, Inc.
EOG PVA

Company: EOG Resources - Midland
 Project: Lea County, NM (NAD 27 NME)
 Site: Lomas Rojas 26 State
 Well: #502H
 Wellbore: OH
 Design: OH

Local Co-ordinate Reference:
 TVD Reference:
 MD Reference:
 North Reference:
 Survey Calculation Method:
 Database:

Well #502H
 KB = 25 @ 3354.0usft (Precision 612)
 KB = 25 @ 3354.0usft (Precision 612)
 Grid
 Minimum Curvature
 EDM 5000.1 Single User Db

MD (usft)	Inc (°)	Azi (grid_north_azim)	TVD (usft)	N/S (usft)	E/W (usft)	DLeg (°/100usft)	Build (°/100usft)	Turn (°/100usft)	High to Plan (usft)	Right to Plan (usft)
14,100.0	88.90	358.80	10,822.2	3,205.8	-384.8	0.46	-0.33	0.33	0.33	-9.1
14,193.0	88.30	358.50	10,824.5	3,298.7	-387.0	0.72	-0.65	-0.32	-0.32	-7.3
14,285.0	88.90	358.50	10,826.7	3,390.7	-389.4	0.65	0.65	0.00	0.00	-5.6
14,377.0	89.60	358.50	10,827.9	3,482.6	-371.8	0.76	0.76	0.00	0.00	-4.9
14,470.0	89.90	358.00	10,828.3	3,575.6	-374.6	0.63	0.32	-0.54	-0.54	-5.1
14,562.0	90.60	358.50	10,827.9	3,667.6	-377.4	0.94	0.76	0.54	0.54	-6.0
14,654.0	89.60	358.80	10,827.8	3,759.5	-379.6	1.13	-1.09	0.33	0.33	-6.7
14,747.0	89.00	359.00	10,828.9	3,852.5	-381.4	0.68	-0.65	0.22	0.22	-6.1
14,839.0	89.20	359.50	10,830.4	3,944.5	-382.6	0.59	0.22	0.54	0.54	-5.2
14,931.0	88.90	359.90	10,831.9	4,036.5	-383.1	0.54	-0.33	0.43	0.43	-4.2
15,023.0	88.90	359.70	10,833.6	4,128.5	-383.4	0.22	0.00	-0.22	-0.22	-3.0
15,115.0	89.90	359.40	10,834.6	4,220.4	-384.1	1.13	1.09	-0.33	-0.33	-2.5
15,208.0	89.70	359.00	10,834.9	4,313.4	-385.4	0.48	-0.22	-0.43	-0.43	-2.7
15,300.0	89.40	359.20	10,835.7	4,405.4	-386.9	0.39	-0.33	0.22	0.22	-2.5
15,392.0	88.50	358.70	10,837.3	4,497.4	-388.6	1.12	-0.98	-0.54	-0.54	-1.4
15,485.0	88.00	357.10	10,840.2	4,590.3	-392.0	1.80	-0.54	-1.72	-1.72	0.9
Last MWD Survey										
15,513.1	88.00	357.10	10,841.2	4,618.3	-393.4	0.00	0.00	0.00	0.00	1.7
HL Crossing, MD:15513.1', TVD:10841.2', N/S:4618.3', E/W:-393.4', INC:88.00										
15,585.0	88.00	357.10	10,843.7	4,690.1	-397.0	0.00	0.00	0.00	0.00	3.8
Projection To Bit										
										7.2



EOG Resources, Inc.
EOG PVA

Company: EOG Resources - Midland
 Project: Lea County, NM (NAD 27 NME)
 Site: Lomas Rojas 26 State
 Well: #502H
 Wellbore: OH
 Design: OH

Local Co-ordinate Reference:
 TVD Reference: KB = 25 @ 3354.0usft (Precision 612)
 MD Reference: KB = 25 @ 3354.0usft (Precision 612)
 North Reference: Grid
 Survey Calculation Method: Minimum Curvature
 Database: EDM 5000.1 Single User Db

Design Annotations

Measured Depth (usft)	Vertical Depth (usft)	Local Coordinates		Comment
		+N/-S (usft)	+E/-W (usft)	
10,873.1	10,742.3	-6.3	-361.1	HL Crossing, MD:10873.1', TVD:10742.3', N/S:-6.3', E/W:-361.1', INC:61.18
15,485.0	10,840.2	4,590.3	-392.0	Last MWD Survey
15,513.1	10,841.2	4,618.3	-393.4	HL Crossing, MD:15513.1', TVD:10841.2', N/S:4618.3', E/W:-393.4', INC:88.00
15,585.0	10,843.7	4,690.1	-397.0	Projection To Bit

Checked By: _____

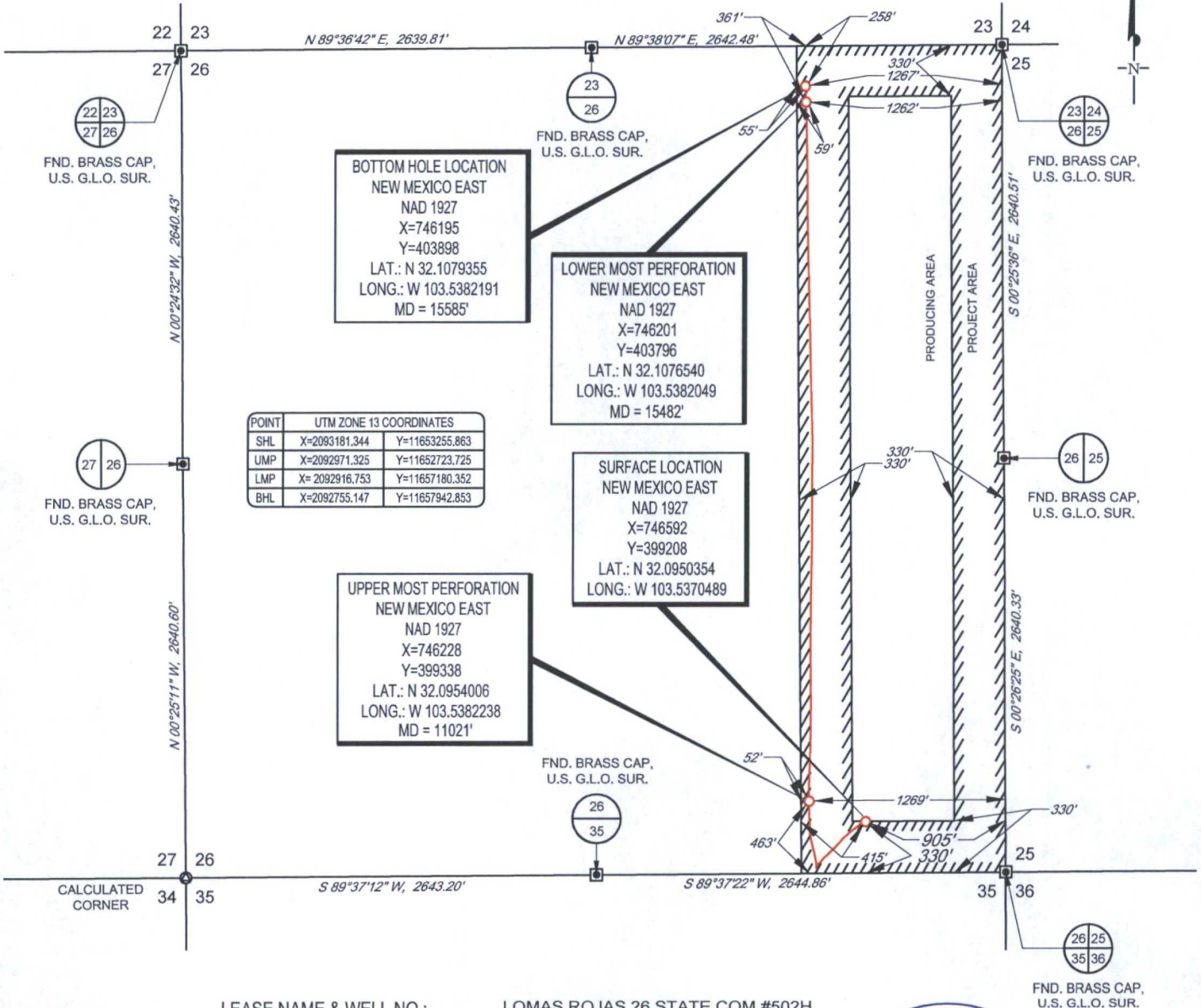
Approved By: _____

Date: _____

SCALE: 1" = 1000'

0' 500' 1000'

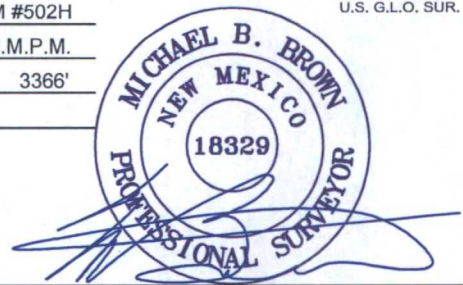
SECTION 26, TOWNSHIP 25-S, RANGE 33-E, N.M.P.M.
LEA COUNTY, NEW MEXICO



POINT	UTM ZONE 13 COORDINATES	
SHL	X=2093181.344	Y=11653255.863
UMP	X=2092971.325	Y=11652723.725
LMP	X=2092916.753	Y=11657180.352
BHL	X=2092755.147	Y=11657942.853

LEASE NAME & WELL NO.: LOMAS ROJAS 26 STATE COM #502H
 SECTION 26 TWP 25-S RGE 33-E SURVEY N.M.P.M.
 COUNTY LEA STATE NM ELEVATION 3366'
 DESCRIPTION 330' FSL & 905' FEL

TOPOGRAPHIC
 LOYALTY INNOVATION LEGACY
 1400 EVERMAN PARKWAY, Ste. 197 • FT. WORTH, TEXAS 76140
 TELEPHONE: (817) 744-7512 • FAX (817) 744-7548
 2903 NORTH BIG SPRING • MIDLAND, TEXAS 79705
 TELEPHONE: (432) 682-1653 OR (800) 767-1653 • FAX (432) 682-1743
 WWW.TOPOGRAPHIC.COM



Michael Blake Brown, P.S. No. 18329
 JUNE 8, 2016



LOMAS ROJAS 26 STATE COM #502H AS-COMPLETED	REVISION:	
	INT	DATE
DATE: JUNE 8, 2016		
FILE: AD_LOMASROJAS26STATECOM_502H		
DRAWN BY: A.V.F.		
SHEET: 1 OF 1		

NOTES:
 1. ORIGINAL DOCUMENT SIZE: 8.5" X 11"
 2. ALL BEARINGS, DISTANCES, AND COORDINATE VALUES CONTAINED HEREIN ARE GRID BASED UPON THE NEW MEXICO STATE PLANE COORDINATE SYSTEM, EAST ZONE, U.S. SURVEY FEET, NORTH AMERICAN DATUM 1927.
 3. CERTIFICATION IS MADE ONLY TO THE LOCATION OF THIS EASEMENT, IN RELATION TO THE EVIDENCE FOUND DURING A FIELD SURVEY, MADE ON THE GROUND, UNDER MY SUPERVISION, AND USING DOCUMENTATION PROVIDED BY EOG RESOURCES, INC. ONLY UTILITIES/EASEMENTS THAT WERE VISIBLE ON THE DATE OF THIS SURVEY, WITHIN/ADJOINING THIS EASEMENT, HAVE BEEN LOCATED AS SHOWN HEREON OF WHICH I HAVE KNOWLEDGE. THIS CERTIFICATION IS LIMITED TO THOSE PERSONS OR ENTITIES SHOWN ON THE FACE OF THIS PLAT AND IS NON-TRANSFERABLE, AND MADE FOR THIS TRANSACTION ONLY.