

17 OPERATOR CERTIFICATION

I hereby certify that the information contained herein is true and complete to the best of my knowledge and belief, and that this organization either owns a working interest or unleased mineral interest in the land including the proposed bottom hole location or has a right to drill this well at this location pursuant to a contract with an owner of such a mineral or working interest, or to a voluntary pooling agreement or a compulsory pooling order heretofore entered by the division.

Linda Good 4/29/2016

Signature Date

Linda Good

Printed Name

linda.good@dvn.com

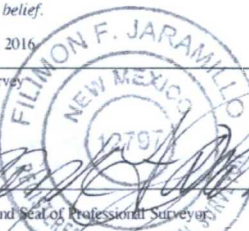
E-mail Address

18 SURVEYOR CERTIFICATION

I hereby certify that the well location shown on this plat was plotted from field notes of actual surveys made by me or under my supervision, and that the same is true and correct to the best of my belief.

APRIL 26, 2016

Date of Survey



Signature and Seal of Professional Surveyor

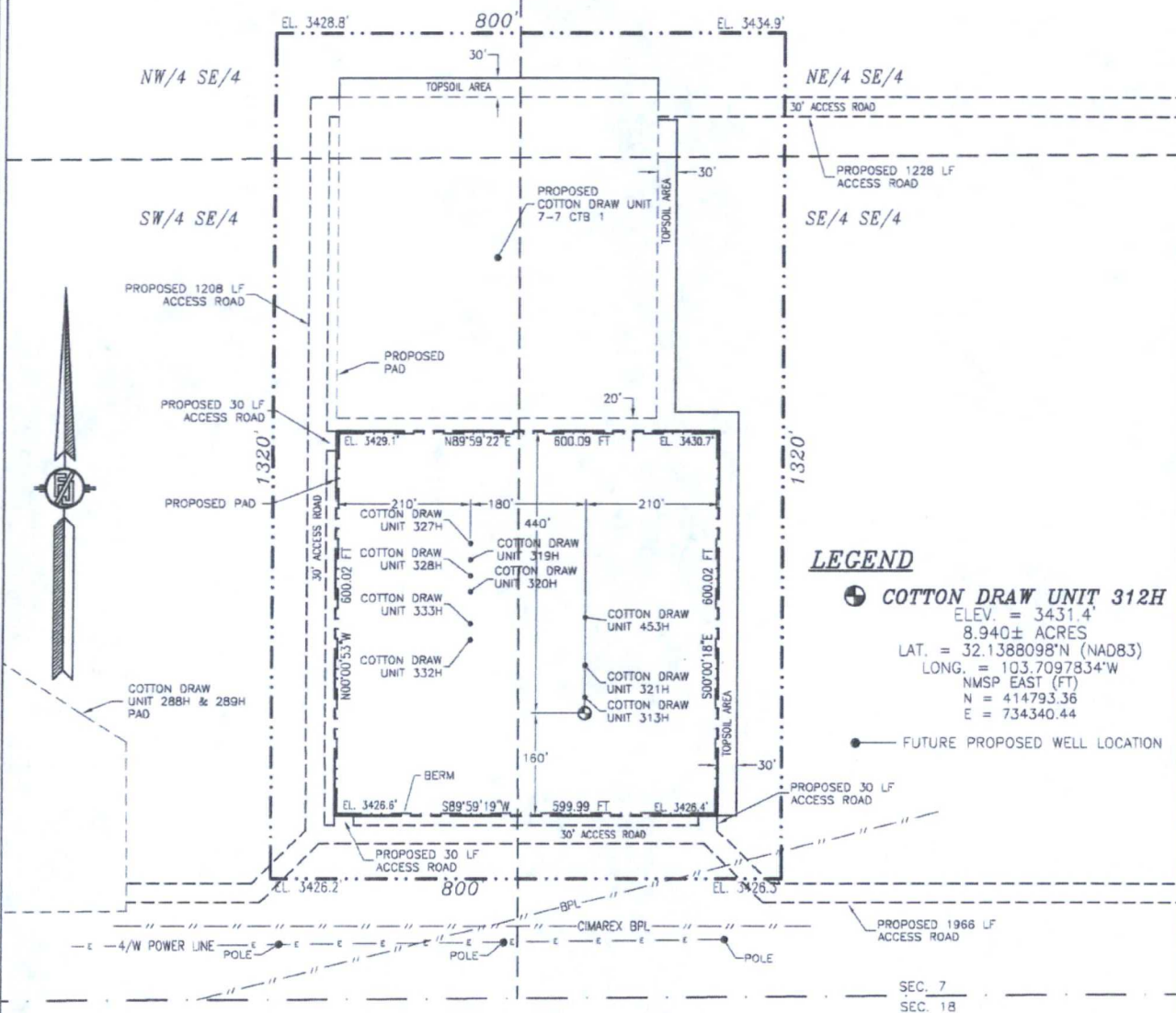
Certificate Number: FILIMON F. JARAMILLO, PLS 12797

SURVEY NO. 4370B

SECTION 7, TOWNSHIP 25 SOUTH, RANGE 32 EAST, N.M.P.M.
LEA COUNTY, STATE OF NEW MEXICO

SITE MAP

NOTE: LATITUDE AND LONGITUDE COORDINATES ARE SHOWN USING THE NORTH AMERICAN DATUM OF 1983 (NAD83). LISTED NEW MEXICO STATE PLANE EAST COORDINATES ARE GRID (NAD83). BASIS OF BEARING AND DISTANCES USED ARE NEW MEXICO STATE PLANE EAST COORDINATES MODIFIED TO THE SURFACE



LEGEND

☉ COTTON DRAW UNIT 312H
ELEV. = 3431.4'
8.940± ACRES
LAT. = 32.1388098°N (NAD83)
LONG. = 103.7097834°W
NMSP EAST (FT)
N = 414793.36
E = 734340.44

● FUTURE PROPOSED WELL LOCATION

0.25 125 250 500
SCALE 1" = 250'

DIRECTIONS TO LOCATION

FROM THE INTERSECTION OF STATE HIGHWAY 128 & CR 1 (ORLA HIGHWAY) GO SOUTH ON CR 1 APPROX. 6.2 MILES TO MONSANTO ROAD ON RIGHT (WEST). TURN WEST ON MONSANTO ROAD GO APPROX. 2.1 MILES ROAD TURNS RIGHT (NORTH). GO NORTH APPROX. 0.9 MILE ROAD TURNS LEFT (WEST). GO WEST APPROX. 25'. TURN RIGHT (NORTH) GO NORTH APPROX. 954' TO A PROPOSED ROAD LATH ON LEFT (WEST). FOLLOW PROPOSED ROAD LATHS WEST APPROX. 887', THEN NORTHWEST 132', THEN 30' NORTH (TOTAL OF 1049') TO THE SOUTHEAST PAD CORNER FOR THIS LOCATION.

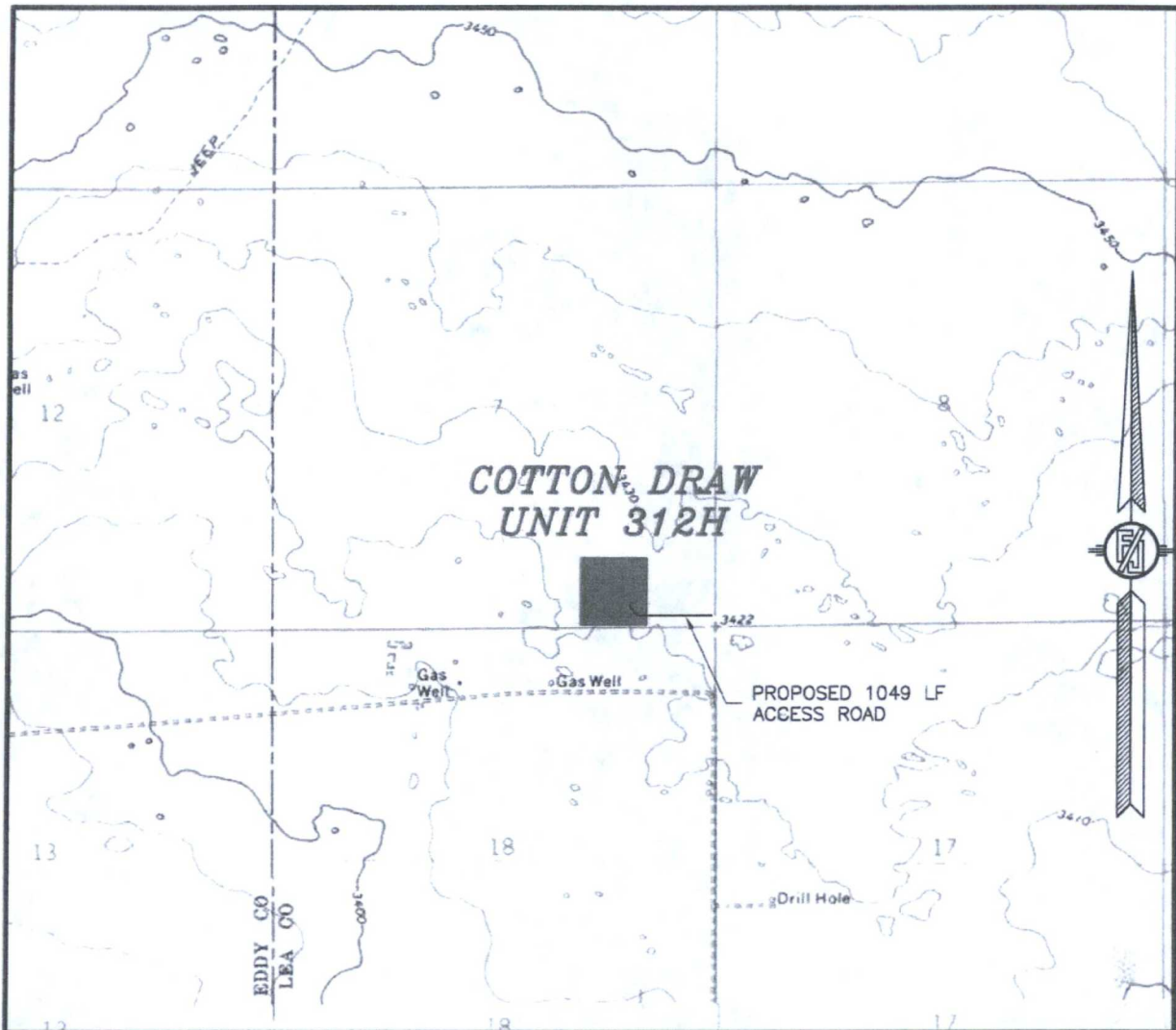
DEVON ENERGY PRODUCTION COMPANY, L.P.
COTTON DRAW UNIT 312H
LOCATED 449 FT. FROM THE SOUTH LINE
AND 1225 FT. FROM THE EAST LINE OF
SECTION 7, TOWNSHIP 25 SOUTH,
RANGE 32 EAST, N.M.P.M.
LEA COUNTY, STATE OF NEW MEXICO

APRIL 26, 2016

SURVEY NO. 4370B

MADRON SURVEYING, INC. 301 SOUTH CANAL (575) 234-3341 CARLSBAD, NEW MEXICO

SECTION 7, TOWNSHIP 25 SOUTH, RANGE 32 EAST, N.M.P.M.
LEA COUNTY, STATE OF NEW MEXICO
LOCATION VERIFICATION MAP



USGS QUAD MAP:
PADUCA BREAKS WEST
PADUCA BREAKS NW

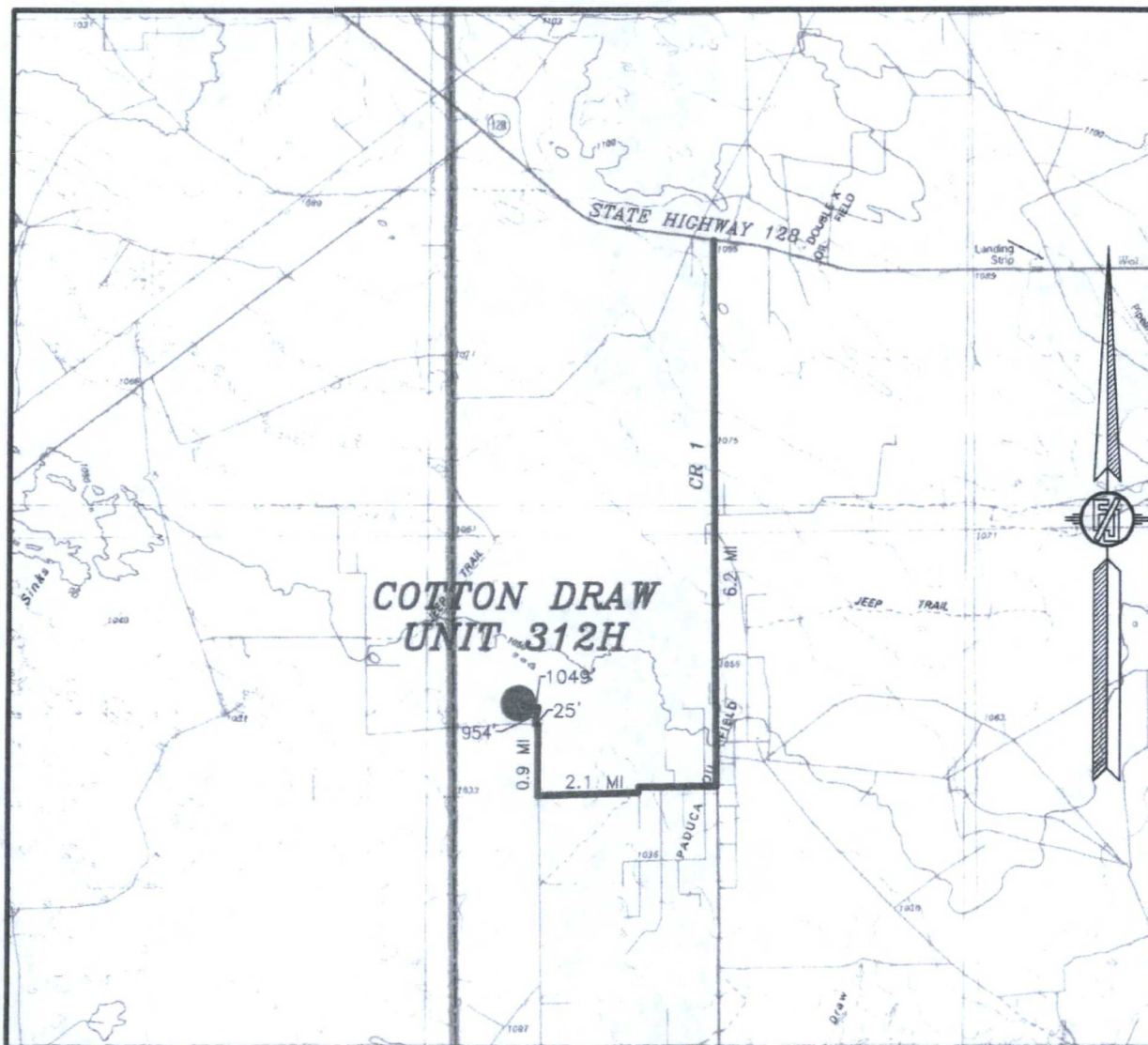
DEVON ENERGY PRODUCTION COMPANY, L.P.
COTTON DRAW UNIT 312H
LOCATED 449 FT. FROM THE SOUTH LINE
AND 1225 FT. FROM THE EAST LINE OF
SECTION 7, TOWNSHIP 25 SOUTH,
RANGE 32 EAST, N.M.P.M.
LEA COUNTY, STATE OF NEW MEXICO

APRIL 26, 2016

SURVEY NO. 4370B

MADRON SURVEYING, INC. 301 SOUTH CANAL (575) 234-3341 CARLSBAD, NEW MEXICO

SECTION 7, TOWNSHIP 25 SOUTH, RANGE 32 EAST, N.M.P.M.
LEA COUNTY, STATE OF NEW MEXICO
VICINITY MAP



DISTANCES IN MILES

NOT TO SCALE

DEVON ENERGY PRODUCTION COMPANY, L.P.
COTTON DRAW UNIT 312H

LOCATED 449 FT. FROM THE SOUTH LINE
AND 1225 FT. FROM THE EAST LINE OF
SECTION 7, TOWNSHIP 25 SOUTH,
RANGE 32 EAST, N.M.P.M.
LEA COUNTY, STATE OF NEW MEXICO

APRIL 26, 2016

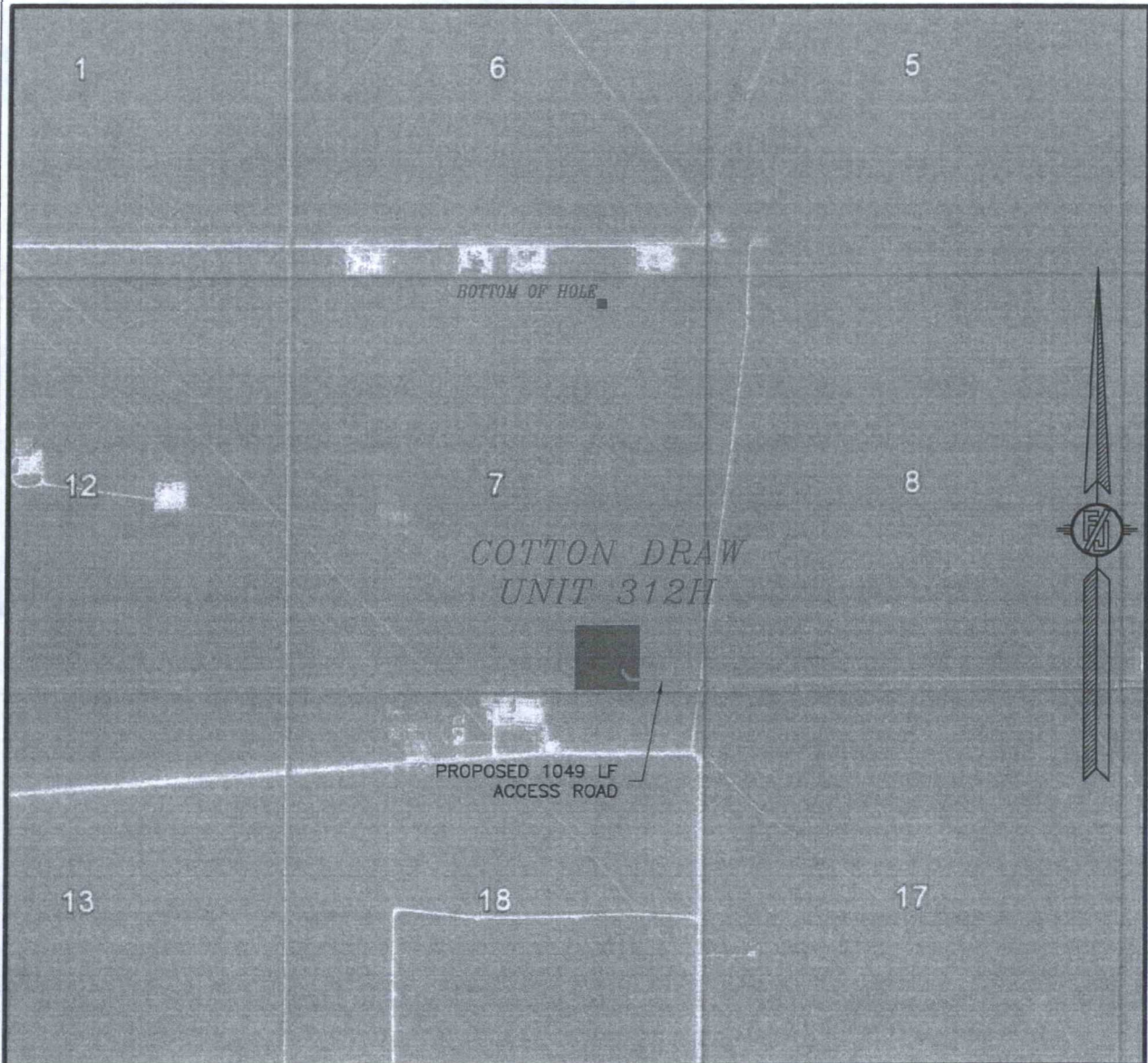
DIRECTIONS TO LOCATION

FROM THE INTERSECTION OF STATE HIGHWAY 128 & CR 1 (ORLA HIGHWAY) GO SOUTH ON CR 1 APPROX. 6.2 MILES TO MONSANTO ROAD ON RIGHT (WEST). TURN WEST ON MONSANTO ROAD GO APPROX. 2.1 MILES ROAD TURNS RIGHT (NORTH). GO NORTH APPROX. 0.9 MILE ROAD TURNS LEFT (WEST). GO WEST APPROX. 25'. TURN RIGHT (NORTH) GO NORTH APPROX. 954' TO A PROPOSED ROAD LATH ON LEFT (WEST). FOLLOW PROPOSED ROAD LATHS WEST APPROX. 887', THEN NORTHWEST 132', THEN 30' NORTH (TOTAL OF 1049') TO THE SOUTHEAST PAD CORNER FOR THIS LOCATION.

SURVEY NO. 4370B

MADRON SURVEYING, INC. 301 SOUTH CANAL (575) 234-3341 CARLSBAD, NEW MEXICO

SECTION 7, TOWNSHIP 25 SOUTH, RANGE 32 EAST, N.M.P.M.
LEA COUNTY, STATE OF NEW MEXICO
AERIAL PHOTO



NOT TO SCALE
AERIAL PHOTO:
GOOGLE EARTH
FEBRUARY 2014

DEVON ENERGY PRODUCTION COMPANY, L.P.

COTTON DRAW UNIT 312H

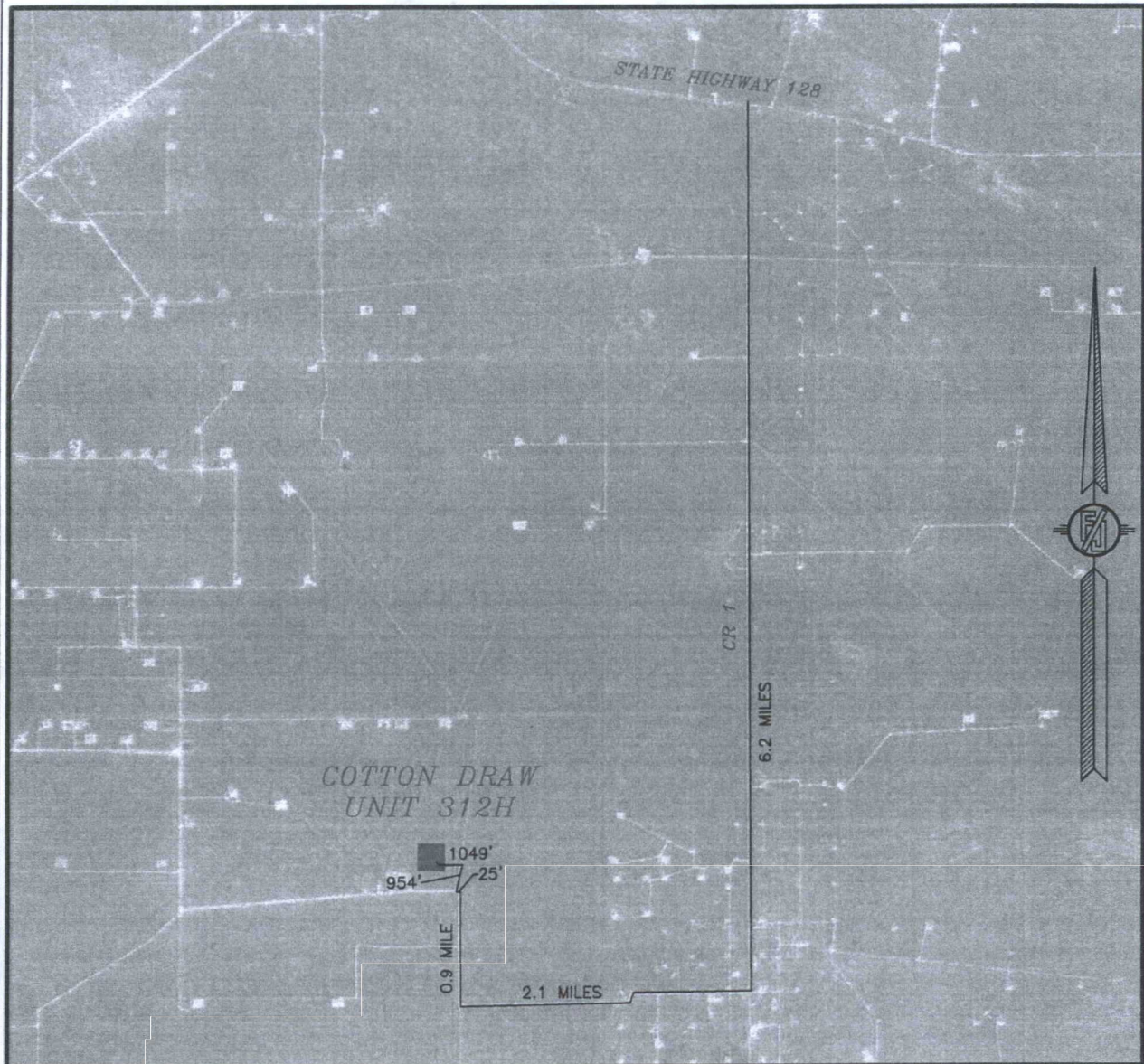
LOCATED 449 FT. FROM THE SOUTH LINE
AND 1225 FT. FROM THE EAST LINE OF
SECTION 7, TOWNSHIP 25 SOUTH,
RANGE 32 EAST, N.M.P.M.
LEA COUNTY, STATE OF NEW MEXICO

APRIL 26, 2016

SURVEY NO. 4370B

MADRON SURVEYING, INC. 301 SOUTH CANAL (575) 234-3341 CARLSBAD, NEW MEXICO

SECTION 7, TOWNSHIP 25 SOUTH, RANGE 32 EAST, N.M.P.M.
LEA COUNTY, STATE OF NEW MEXICO
ACCESS AERIAL ROUTE MAP



NOT TO SCALE
AERIAL PHOTO:
GOOGLE EARTH
FEBRUARY 2014

DEVON ENERGY PRODUCTION COMPANY, L.P.
COTTON DRAW UNIT 312H

LOCATED 449 FT. FROM THE SOUTH LINE
AND 1225 FT. FROM THE EAST LINE OF
SECTION 7, TOWNSHIP 25 SOUTH,
RANGE 32 EAST, N.M.P.M.
LEA COUNTY, STATE OF NEW MEXICO

APRIL 26, 2016

SURVEY NO. 4370B

MADRON SURVEYING, INC. 301 SOUTH CANAL (575) 234-3341 CARLSBAD, NEW MEXICO

One Mile Radius Map

Estimated distances to nearest wellbores:

*From SHL: Cotton Draw Unit 252H 700 ft W
 Trionyx 6 Fed 7H 800 ft NE
 Trionyx 6 Fed 8H 835 ft NE
 Trionyx 6 Fed 6H 700 ft NW
 *From BHL: Cotton Draw Unit 252H 330 ft NW

25S 32E

12

devon

Cotton Draw Unit 312H

One Mile Radius Map

0 2,197
 FEET

WELL SYMBOLS
 ABANDONED WATER WELL
 DRY AND ABANDONED WELL
 GAS PRODUCING WELL
 JUNKED AND ABANDONED
 OIL PRODUCING WELL
 PROPOSED

January 28, 2016

