

District I
1625 N. French Dr., Hobbs, NM 88240
Phone: (575) 393-6161 Fax: (575) 393-0720
District II
811 S. First St., Artesia, NM 88210
Phone: (575) 748-1283 Fax: (575) 748-9720
District III
1000 Rio Brazos Road, Aztec, NM 87410
Phone: (505) 334-6178 Fax: (505) 334-6170
District IV
1220 S. St. Francis Dr., Santa Fe, NM 87505
Phone: (505) 476-3460 Fax: (505) 476-3462

State of New Mexico
Energy, Minerals & Natural Resources Department
OIL CONSERVATION DIVISION
1220 South St. Francis Dr.
Santa Fe, NM 87505

Form C-102

Revised August 1, 2011

Submit one copy to appropriate
District Office

JUL 5 2016 ☐ AMENDED REPORT

WELL LOCATION AND ACREAGE DEDICATION PLAT

¹ API Number 30-025-		² Pool Code 27220		³ Pool Name Gem; Bone Spring	
⁴ Property Code 316227		⁵ Property Name RUSTY ANCHOR 7 FEDERAL COM			⁶ Well Number 4H
⁷ OGRID No. 160825		⁸ Operator Name B.C. OPERATING, INC.			⁹ Elevation 3528

¹⁰ Surface Location

UL or lot no.	Section	Township	Range	Lot Idn	Feet from the	North/South line	Feet from the	East/West line	County
B	18	T20S	R33E		609'	NORTH	2440'	EAST	LEA

¹¹ Bottom Hole Location If Different From Surface

UL or lot no.	Section	Township	Range	Lot Idn	Feet from the	North/South line	Feet from the	East/West line	County
1	6	T20S	R33E		240'	NORTH	960'	EAST	LEA

¹² Dedicated Acres 320.86	¹³ Joint or Infill	¹⁴ Consolidation Code	¹⁵ Order No.
---	-------------------------------	----------------------------------	-------------------------

No allowable will be assigned to this completion until all interests have been consolidated or a non-standard unit has been approved by the division.

<p>¹⁶ SECTION 36</p> <p>SECTION 1</p> <p>BOTTOM HOLE LOCATION</p> <p>840' FNL 960' FEL</p> <p>NAD 83, SPCS NH EAST</p> <p>X737261.30' / Y585810.32'</p> <p>LAT32.60883253N / LON103.69706192W</p> <p>NAD 27, SPCS NH EAST</p> <p>X696081.15' / Y585747.69'</p> <p>LAT32.60871073N / LON103.69656559W</p> <p>LAST TAKE POINT</p> <p>330' FNL 960' FEL</p> <p>NAD 83, SPCS NH EAST</p> <p>X737261.30' / Y585720.32'</p> <p>LAT32.60883253N / LON103.69706368W</p> <p>NAD 27, SPCS NH EAST</p> <p>X696081.15' / Y58567.69'</p> <p>LAT32.60846335N / LON103.69656736W</p>		<p>SECTION 31</p> <p>SECTION 6</p> <p>CORNER COORDINATES</p> <p>NAD 83, SPCS NH EAST</p> <p>A - Y: 586048.24' / X: 736899.06'</p> <p>B - Y: 586055.83' / X: 738221.32'</p> <p>C - Y: 575461.19' / X: 738256.82'</p> <p>D - Y: 575462.19' / X: 736937.41'</p> <p>NAD 27, SPCS NH EAST</p> <p>A - Y: 585985.61' / X: 695718.92'</p> <p>B - Y: 585993.18' / X: 697041.16'</p> <p>C - Y: 575398.83' / X: 697076.37'</p> <p>D - Y: 575399.84' / X: 695756.97'</p>		<p>SECTION 32</p> <p>SECTION 5</p> <p>LAST TAKE POINT</p>		<p>¹⁷ OPERATOR CERTIFICATION</p> <p>I hereby certify that the information contained herein is true and complete to the best of my knowledge and belief, and that this organization either owns a working interest or unleased mineral interest in the land including the proposed bottom hole location or has a right to drill this well at this location pursuant to a contract with an owner of such a mineral or working interest, or to a voluntary pooling agreement or a compulsory pooling order heretofore entered by the division.</p> <p><i>Pam Stevens</i> 08/15/15 Signature Date</p> <p>Pam Stevens Printed Name</p> <p>pstevens@bcoperating.com E-mail Address</p>	
<p>SECTION 1</p> <p>SECTION 12</p> <p>FIRST TAKE POINT</p> <p>330' FSL 960' FEL</p> <p>NAD 83, SPCS NH EAST</p> <p>X737294.48' / Y575791.92'</p> <p>LAT32.58129569N / LON103.69714880W</p> <p>NAD 27, SPCS NH EAST</p> <p>X696114.05' / Y575729.56'</p> <p>LAT32.58117375N / LON103.69665352W</p>		<p>SECTION 6</p> <p>SECTION 7</p> <p>FIRST TAKE POINT</p>		<p>SECTION 5</p> <p>SECTION 8</p>		<p>"SURVEYOR CERTIFICATION</p> <p>I hereby certify that the well location shown on this plat was plotted from field notes of actual surveys made by me or under my supervision, and that the same is true and correct to the best of my belief.</p> <p>AUGUST 05, 2015 Date of Survey</p> <p><i>Lloyd P. Short</i> Signature and Seal of Professional Surveyor</p>	
<p>SECTION 12</p> <p>SECTION 13</p> <p>SURFACE HOLE LOCATION</p> <p>609' FNL 960' FEL</p> <p>NAD 83, SPCS NH EAST</p> <p>X735821.36' / Y574853.87'</p> <p>LAT32.57874151N / LON103.70194916W</p> <p>NAD 27, SPCS NH EAST</p> <p>X694640.92' / Y574791.54'</p> <p>LAT32.57861961N / LON103.701453814W</p>		<p>SECTION 7</p> <p>SECTION 18</p>		<p>SECTION 8</p> <p>SECTION 17</p>		<p>Certificate Number LLOYD P. SHORT 21653</p>	

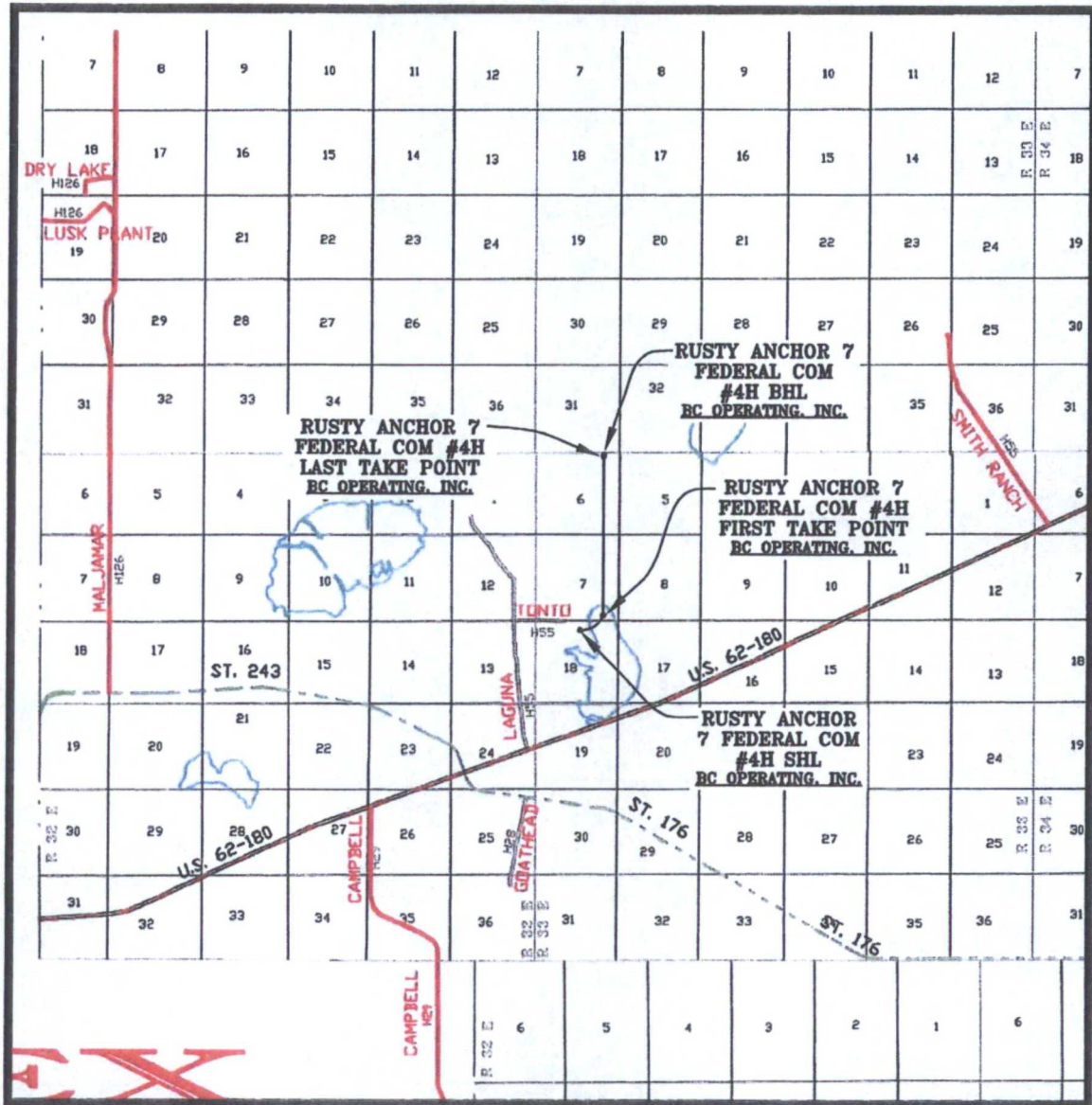
LOCATION VERIFICATION MAP



SCALE: 1" = 2000'
CONTOUR INTERVAL = 5'

PREPARED BY:
R-SQUARED GLOBAL, LLC
1309 LOUISVILLE AVENUE, MONROE, LA 71201
318-323-6900 OFFICE
JOB No. R3409

VICINITY MAP



SEC. 18 TWP. 20-S RGE. 33-E

SCALE: 1" = 2 MILES

SURVEY: N.M.P.M.

COUNTY: LEA

DESCRIPTION: 609' FNL & 2440' FEL

ELEVATION: 3528'

OPERATOR: B.C. OPERATING, INC.

LEASE: RUSTY ANCHOR

U.S.G.S. TOPOGRAPHIC MAP: LAGUNA GATUNA, N.M.

PREPARED BY:
R-SQUARED GLOBAL, LLC
1309 LOUISVILLE AVENUE, MONROE, LA 71201
318-323-6900 OFFICE
JOB No. R3409

WELL PAD TOPO

SEC. 18 TWP. 20-S RGE. 33-E

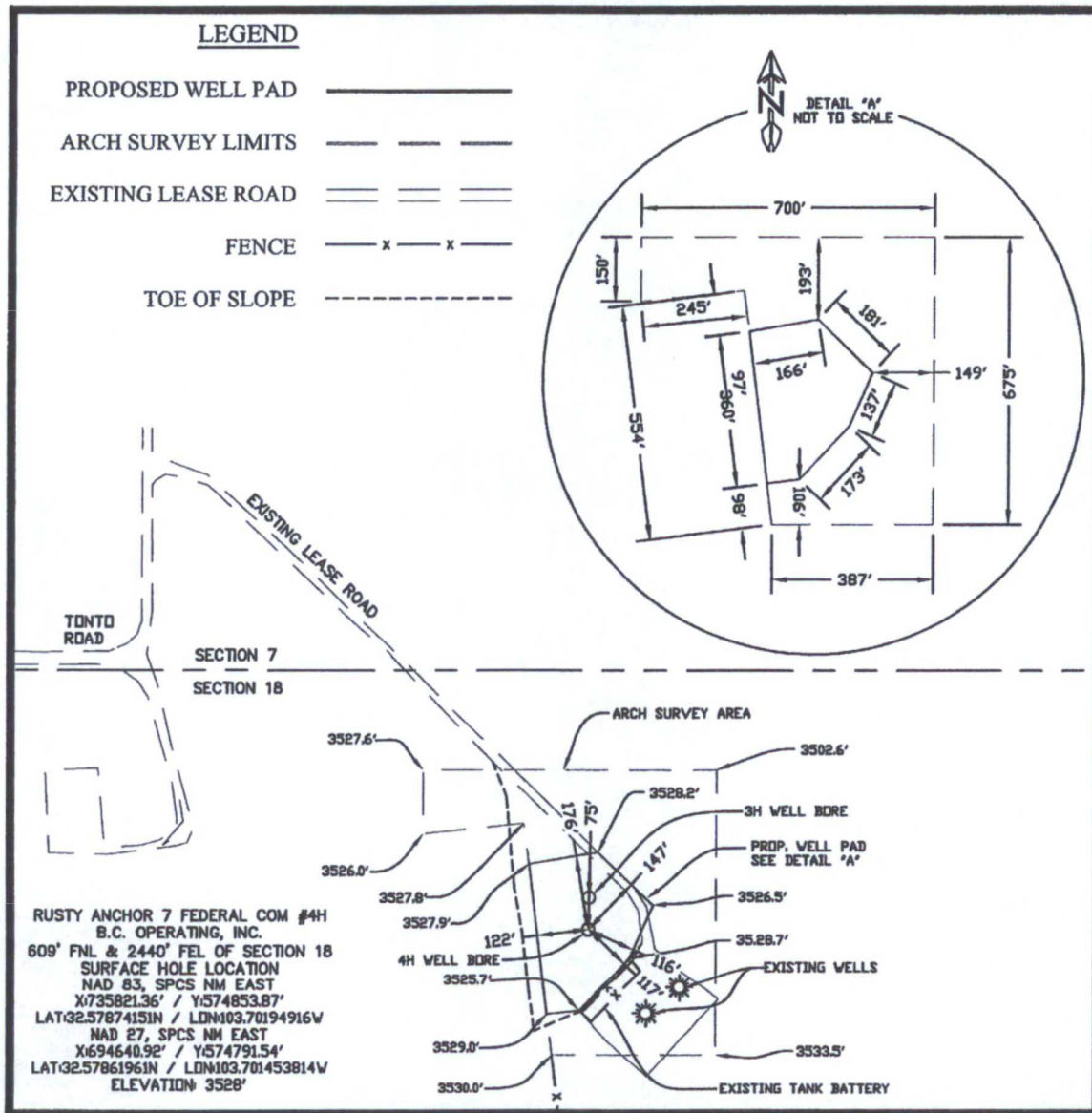
SURVEY: N.M.P.M.

COUNTY: LEA

U.S.G.S. TOPOGRAPHIC MAP: LAGUNA GATUNA, N.M.

LEGEND

PROPOSED WELL PAD	—————
ARCH SURVEY LIMITS	— — — — —
EXISTING LEASE ROAD	=====
FENCE	— x — x —
TOE OF SLOPE	- - - - -



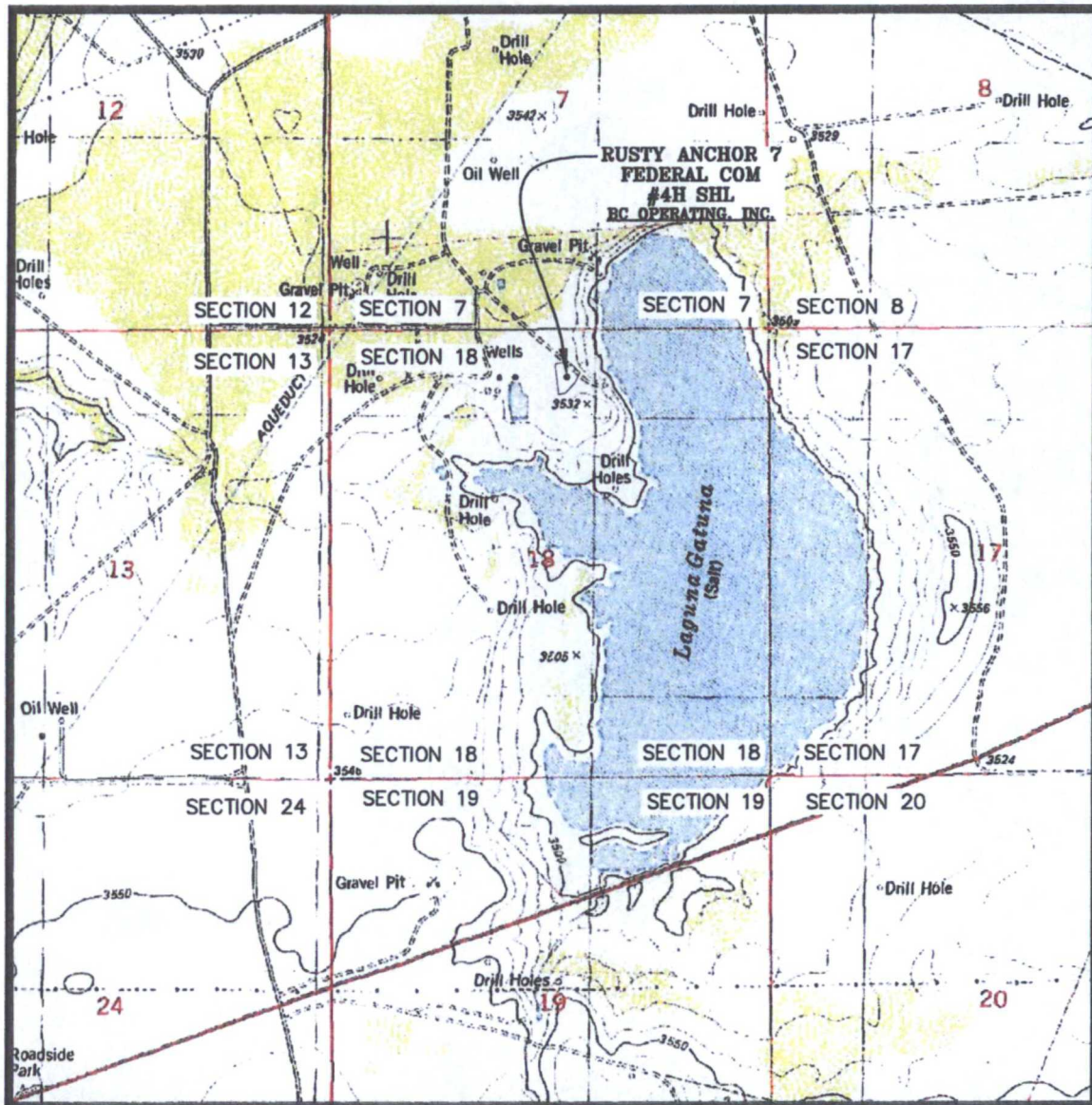
DIRECTIONS TO LOCATION:

FROM THE INTERSECTION OF WEST CARLSBAD HIGHWAY AND HIGHWAY 176 TRAVEL NORTHWEST ON WEST CARLSBAD HIGHWAY FOR 0.8 MILES TO COUNTY ROAD 55 ON THE LEFT. TRAVEL NORTHWEST ON COUNTY ROAD 55 FOR 1.5 MILES TO TONTO ROAD ON THE RIGHT. TRAVEL EAST ON TONTO ROAD FOR 0.6 MILES TO LEASE ROAD ON THE LEFT. TRAVEL NORTH ON LEASE ROAD FOR 0.1 MILES TO LEASE ROAD ON THE RIGHT. TRAVEL SOUTHEAST ON LEASE ROAD FOR 0.3 MILES TO PROPOSED WELL PAD.

200' 0' 200' 400'
 SCALE: 1" = 400'

PREPARED BY:
 R-SQUARED GLOBAL, LLC
 1309 LOUISVILLE AVENUE, MONROE, LA 71201
 318-323-6900 OFFICE
 JOB No. R3409

WELL PAD LOCATION VERIFICATION MAP



SEC. 18 TWP. 20-S RGE. 33-E
 SURVEY: N.M.P.M.
 COUNTY: LEA
 DESCRIPTION: 609' FNL & 2440' FEL
 ELEVATION: 3528'
 OPERATOR: B.C. OPERATING, INC.
 LEASE: RUSTY ANCHOR
 U.S.G.S. TOPOGRAPHIC MAP: LAGUNA GATUNA, N.M.

SCALE: 1" = 2000'
 CONTOUR INTERVAL = 5'

PREPARED BY:
 R-SQUARED GLOBAL, LLC
 1309 LOUISVILLE AVENUE, MONROE, LA 71201
 318-323-8900 OFFICE
 JOB No. R3409

EXISTING ACCESS ROAD VICINITY MAP

RUSTY ANCHOR 7 FEDERAL COM #4H

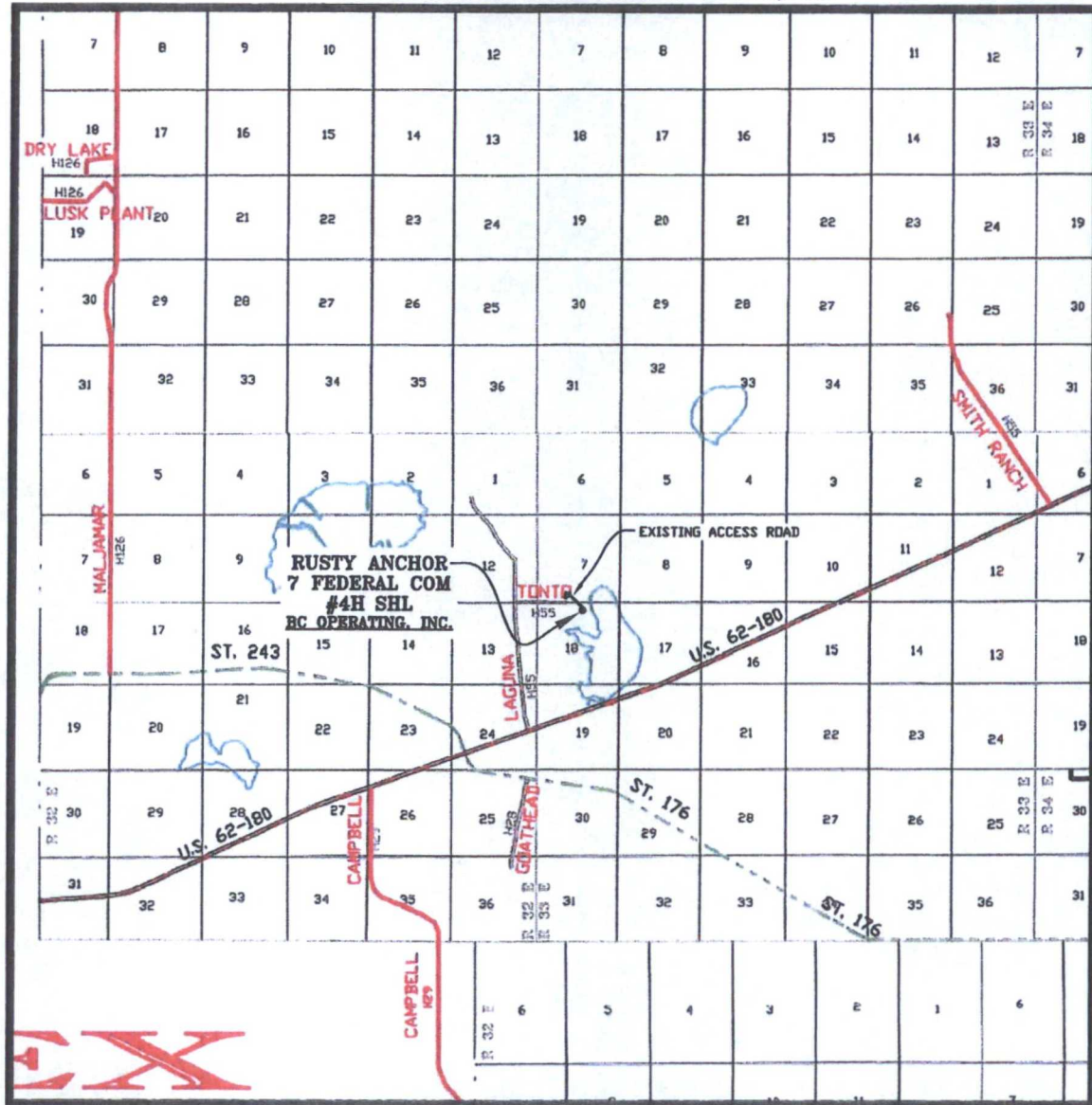
609' FNL & 2440' FEL

SEC. 18 TWP. 20-S RGE. 33-E

SURVEY: N.M.P.M.

COUNTY: LEA

U.S.G.S. TOPOGRAPHIC MAP: LAGUNA GATUNA, N.M.



SCALE: 1" = 2 MILES

PREPARED BY:
R-SQUARED GLOBAL, LLC
1309 LOUISVILLE AVENUE, MONROE, LA 71201
318-323-6900 OFFICE
JOB No. R3409

MINERAL MAP

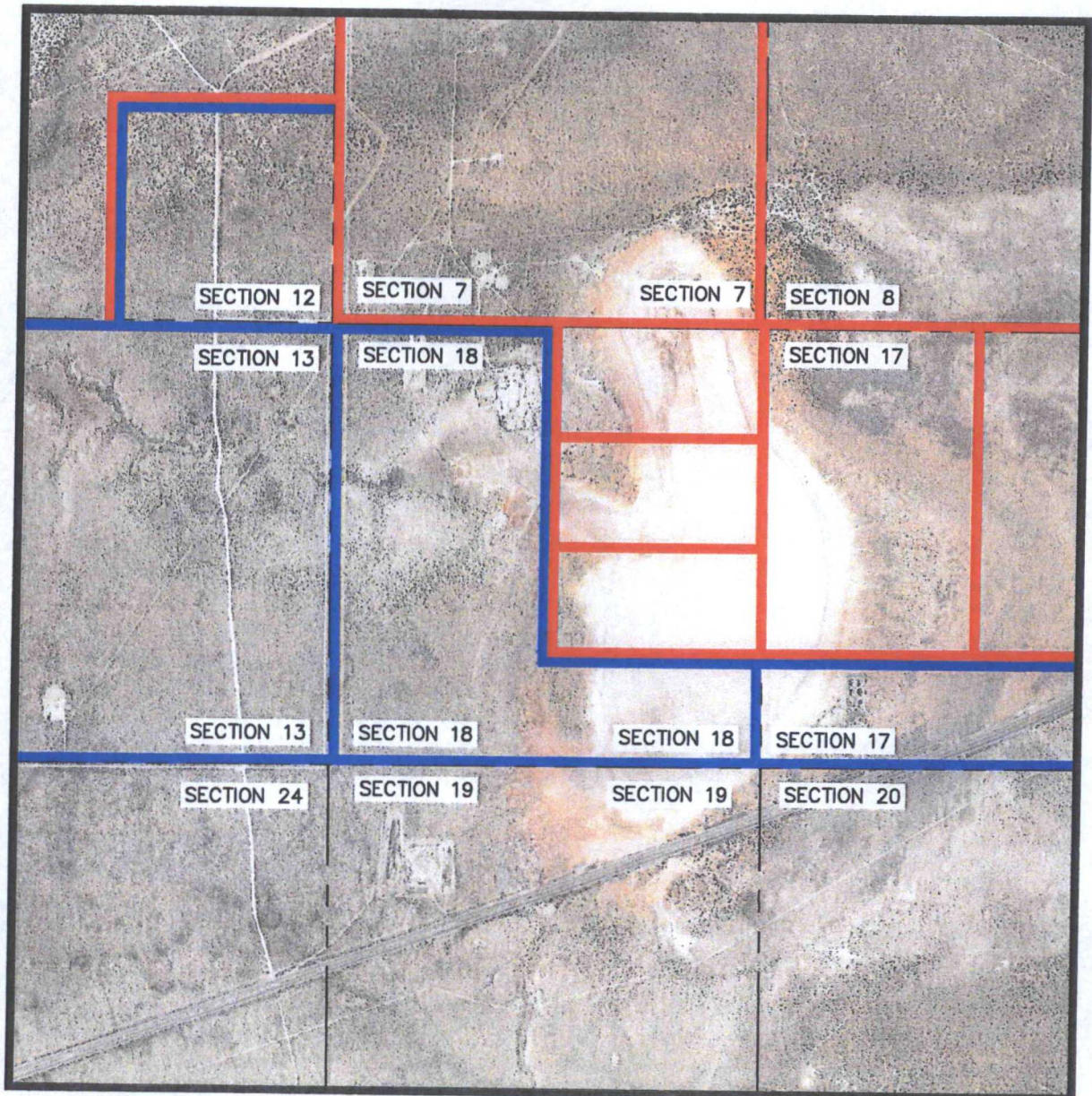
RUSTY ANCHOR 7 FEDERAL COM

SEC. 18 TWP. 20-S RGE. 33-E

SURVEY: N.M.P.M.

COUNTY: LEA

U.S.G.S. TOPOGRAPHIC MAP: LAGUNA GATUNA, N.M.



LEGEND

SCALE: 1" = 1000'

STATE MINERALS



FEDERAL COM MINERAL



PREPARED BY:
R-SQUARED GLOBAL, LLC
1309 LOUISVILLE AVENUE, MONROE, LA 71201
318-323-6900 OFFICE
JOB No. R3406