

District I
1625 N. French Dr., Hobbs, NM 88240
Phone: (575) 393-6161 Fax: (575) 393-0720
District II
811 S. First St., Artesia, NM 88210
Phone: (575) 748-1283 Fax: (575) 748-9720
District III
1000 Rio Brazos Road, Aztec, NM 87410
Phone: (505) 334-6178 Fax: (505) 334-6170
District IV
1220 S. St. Francis Dr., Santa Fe, NM 87505
Phone: (505) 476-3460 Fax: (505) 476-3462

State of New Mexico
Energy, Minerals & Natural Resources Department
OIL CONSERVATION DIVISION
1220 South St. Francis Dr.
Santa Fe, NM 87505

Form C-102
Revised August 1, 2011
Submit one copy to appropriate
District Office

☐ AMENDED REPORT

JUL 06 2016

WELL LOCATION AND ACREAGE DEDICATION PLAT

1 API Number 30-025-48353		2 Pool Code 98203		3 Pool Name WC-025-525322A; WOLF CAMP (GAS)	
4 Property Code		5 Property Name JENNINGS 27 W1AP FED COM			
6 Well Number 3H		7 OGRID NO. 14744			
8 Operator Name MEWBOURNE OIL COMPANY				9 Elevation 3401	

10 Surface Location

UL or lot no.	Section	Township	Range	Lot Idn	Feet from the	North/South line	Feet From the	East/West line	County
A	27	25S	32E		185	NORTH	580	EAST	LEA

11 Bottom Hole Location If Different From Surface

UL or lot no.	Section	Township	Range	Lot Idn	Feet from the	North/South line	Feet from the	East/West line	County
P	27	25S	32E		330	SOUTH	450	EAST	LEA

12 Dedicated Acres 320	13 Joint or Infill	14 Consolidation Code	15 Order No.
----------------------------------	--------------------	-----------------------	--------------

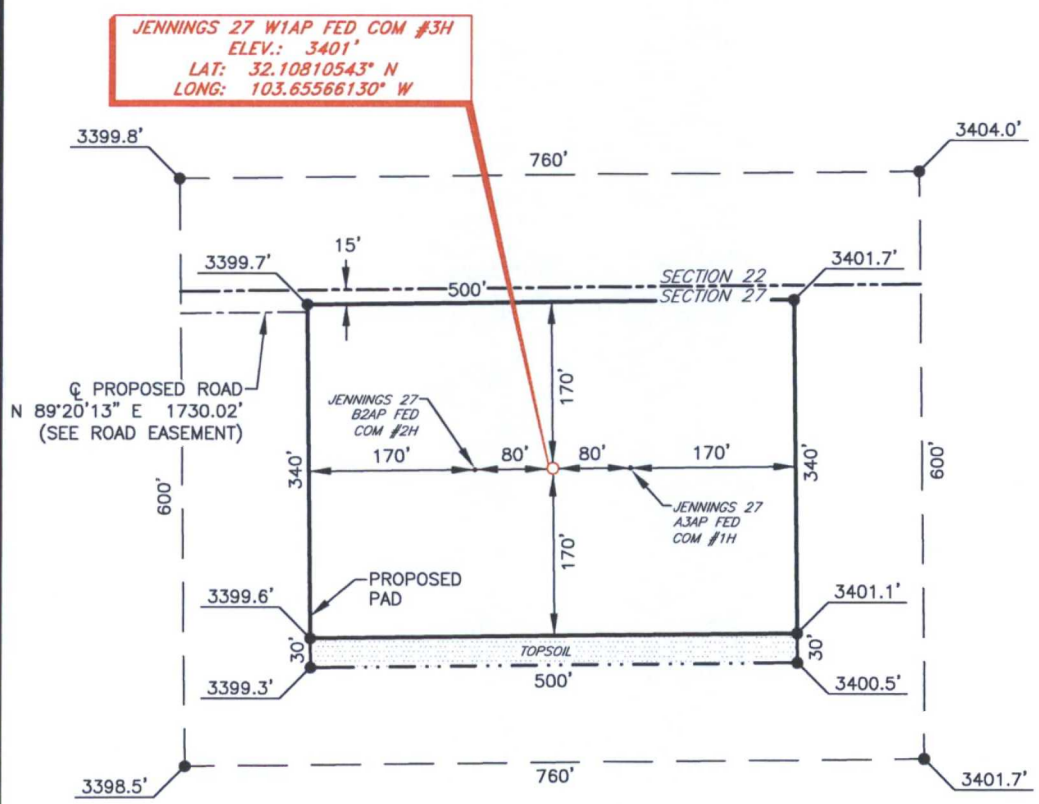
No allowable will be assigned to this completion until all interest have been consolidated or a non-standard unit has been approved by the division.

<p>16</p> <p>Project Area</p> <p>GEODETIC DATA NAD 27 GRID - NM EAST</p> <p>SURFACE LOCATION N 403711.3 - E 709830.0 LAT: 32.10810543° N LONG: 103.65566130° W</p> <p>BOTTOM HOLE N 398953.7 - E 710000.1</p> <p>CORNER DATA NAD 27 GRID - NM EAST</p> <p>A: CALCULATED CORNER N 398575.2 - E 705114.2</p> <p>B: FOUND BRASS CAP "1939" N 401214.8 - E 705094.4</p> <p>C: FOUND BRASS CAP "1939" N 403854.9 - E 705072.0</p> <p>D: FOUND BRASS CAP "1939" N 403871.6 - E 707742.9</p> <p>E: FOUND BRASS CAP "1939" N 403903.1 - E 710407.2</p> <p>F: FOUND BRASS CAP "1939" N 401281.5 - E 710445.3</p> <p>G: FOUND BRASS CAP "1939" N 398629.1 - E 710450.6</p> <p>H: FOUND BRASS CAP "1939" N 398597.5 - E 707781.4</p> <p>Producing Area</p>		<p>DETAIL "A"</p> <p>185' 580'</p> <p>SEE DETAIL "A"</p> <p>S. L.</p> <p>3398.8' 760' 3404.0'</p> <p>3398.5' 3401.7'</p> <p>WELL PATH</p> <p>330' 450'</p>		<p>17 OPERATOR CERTIFICATION</p> <p>I hereby certify that the information contained herein is true and complete to the best of my knowledge and belief, and that this organization either owns a working interest or unleased mineral interest in the land including the proposed bottom hole location or has a right to drill this well at this location pursuant to a contract with an owner of such a mineral or working interest, or to a voluntary pooling agreement or a compulsory pooling order heretofore entered by the division.</p> <p>Signature: Bradley Bishop Date: 9-29-15</p> <p>Printed Name: BRADLEY BISHOP</p> <p>E-mail Address:</p>
<p>18 SURVEYOR CERTIFICATION</p> <p>I hereby certify that the well location shown on this plat was plotted from field notes of actual surveys made by me or under my supervision, and that the same is true and correct to the best of my belief.</p> <p>8-20-2015</p> <p>Date of Survey</p> <p>Signature and Seal of Professional Surveyor</p> <p>19680</p> <p>Certificate Number</p>		<p>ROBERT M. HOWETT</p> <p>19680</p> <p>PROFESSIONAL SURVEYOR</p>		

"3"

MEWBOURNE OIL COMPANY

JENNINGS 27 W1AP FED COM #3H
 (185' FNL & 580' FEL)
 SECTION 27, T25S, R32E
 N. M. P. M., LEA COUNTY, NEW MEXICO



DIRECTIONS TO LOCATION

From the intersection of CR-1 (Orla Hwy.) and Pipeline Rd.
 Go North on CR-1 approx. 3.0 miles to a lease road on the right;
 Turn right and go East approx. 0.2 miles to a lease road on the left;
 Turn left and go North approx. 0.1 miles to a lease road on the right;
 Turn right and go East approx. 0.3 mile to a proposed road on the right;
 Turn right and go Southeast approx. 113 feet to a proposed road on the left;
 Turn left and go East approx. 0.4 miles to location on the right.

SCALE: 1" = 150'
 0 75 150
 BEARINGS ARE
 NAD 27 GRID - NM EAST
 DISTANCES ARE GROUND

Firm No.: TX 10193838 NM 4655451

Copyright 2014 - All Rights Reserved

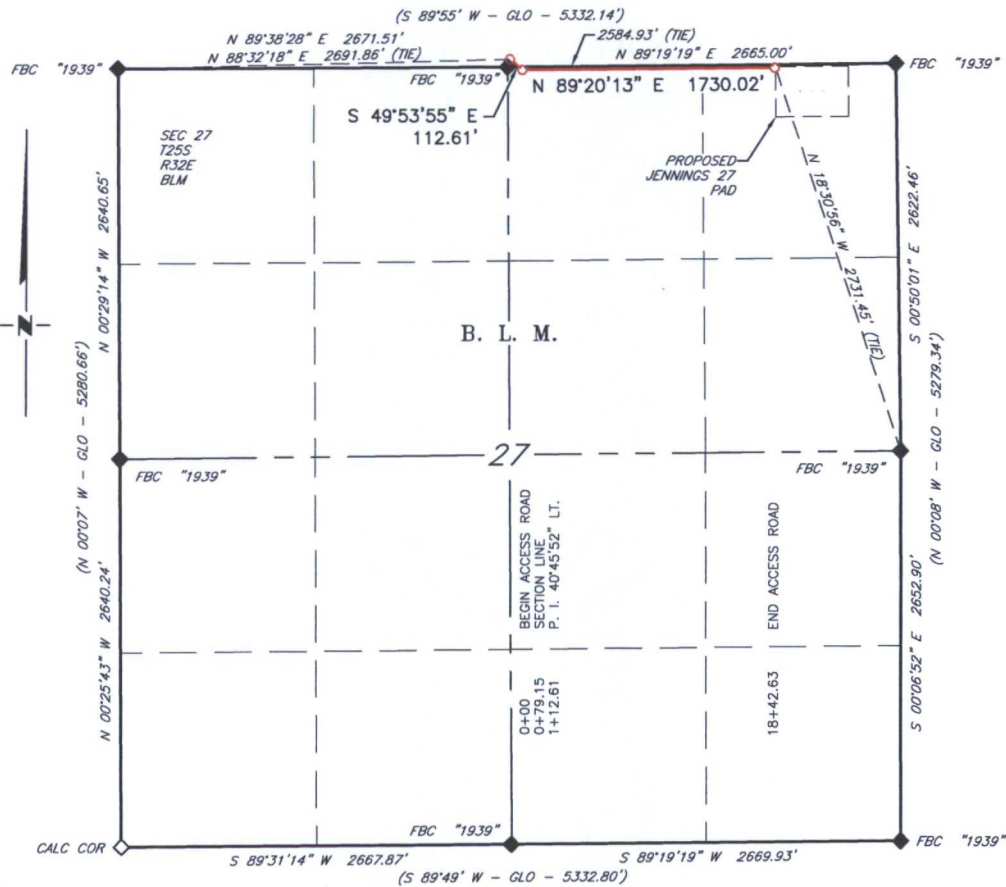
NO.	REVISION	DATE
JOB NO.:	LS1508445	
DWG. NO.:	1508445PAD	



308 W. BROADWAY ST., HOBBS, NM 88240 (575) 964-8200

SCALE: 1" = 150'
DATE: 8-20-2015
SURVEYED BY: ML/ER
DRAWN BY: CMJ
APPROVED BY: RMH
SHEET : 1 OF 1

**MEWBOURNE OIL COMPANY
PROPOSED ACCESS ROAD FOR THE
JENNINGS 27 FED COM WELL LOCATIONS
SECTIONS 22 & 27, T25S, R32E,
N. M. P. M., LEA CO., NEW MEXICO**



SCALE: 1" = 1000'
0 500' 1000'

BEARINGS ARE GRID NAD 27
NM EAST
DISTANCES ARE HORIZ. GROUND.

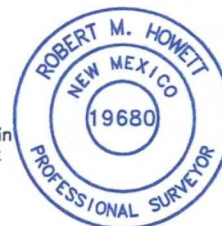
LEGEND

- () RECORD DATA - GLO
- ◆ FOUND MONUMENT AS NOTED
- ◇ CALCULATED CORNER

— PROPOSED ACCESS ROAD

I, R. M. Howett, a N. M. Professional Surveyor, hereby certify that I prepared this plat from an actual survey made on the ground under my direct supervision, said survey and plat meet the Min. Stds. for Land Surveying in the State of N. M. and are true and correct to the best of my knowledge and belief.

Robert M. Howett
Robert M. Howett NM PS 19680



Firm No.: TX 10193838 NM 4655451

Copyright 2014 - All Rights Reserved

NO.	REVISION	DATE
JOB NO.:	LS1508443	
DWG. NO.:	1508843RD	

RRC

308 W. BROADWAY ST., HOBBS, NM 88240 (575) 964-8200

SCALE: 1" = 1000'
DATE: 8-20-2015
SURVEYED BY: ML/ER
DRAWN BY: CMJ
APPROVED BY: RMH
SHEET : 1 OF 2

**MEWBOURNE OIL COMPANY
PROPOSED ACCESS ROAD FOR THE
JENNINGS 27 FED COM WELL LOCATIONS
SECTIONS 22 & 27, T25S, R32E,
N. M. P. M., LEA CO., NEW MEXICO**

DESCRIPTION

A strip of land 30 feet wide, being 1,842.63 feet or 111.674 rods in length, lying in Sections 22 & 27, Township 25 South, Range 32 East, N. M. P. M., Lea County, New Mexico, being 15 feet left and 15 feet right of the following described survey of a centerline across B. L. M. land:

BEGINNING at Engr. Sta. 0+00, a point in the Southeast quarter of Section 22, which bears N 88°32'18" E, 2,691.86 feet from a brass cap, stamped "1939", found for the Southwest corner of Section 22;

Thence S 49°53'55" E, 79.15 feet, to Engr. Sta. 0+79.15, a point on the South line of Section 22, which bears S 89°19'19" E, 2,584.93 feet from a brass cap, stamped "1939", found for the Southeast corner of Section 22;

Thence continuing into Section 27, S 49°53'55" E, 33.46 feet, to Engr. Sta. 1+12.61, a P. I. of 40°45'52" left;

Thence N 89°20'13" E, 1730.02 feet, to Engr. Sta. 18+42.63, the End of Survey, a point in the Northeast quarter of Section 27, which bears N 18°30'56" W 2,731.45 feet from a brass cap stamped "1939", found for the East quarter corner of Section 27.

Said strip of land contains 1.269 acres, more or less and is allocated by forties as follows:

SECTION 22

SW 1/4 SE 1/4	4.797	Rods	0.055	Acres
---------------	-------	------	-------	-------

SECTION 27

NW 1/4 NE 1/4	76.395	Rods	0.868	Acres
NE 1/4 NE 1/4	30.482	Rods	0.346	Acres

Firm No.: TX 10193838 NM 4655451

Copyright 2014 - All Rights Reserved

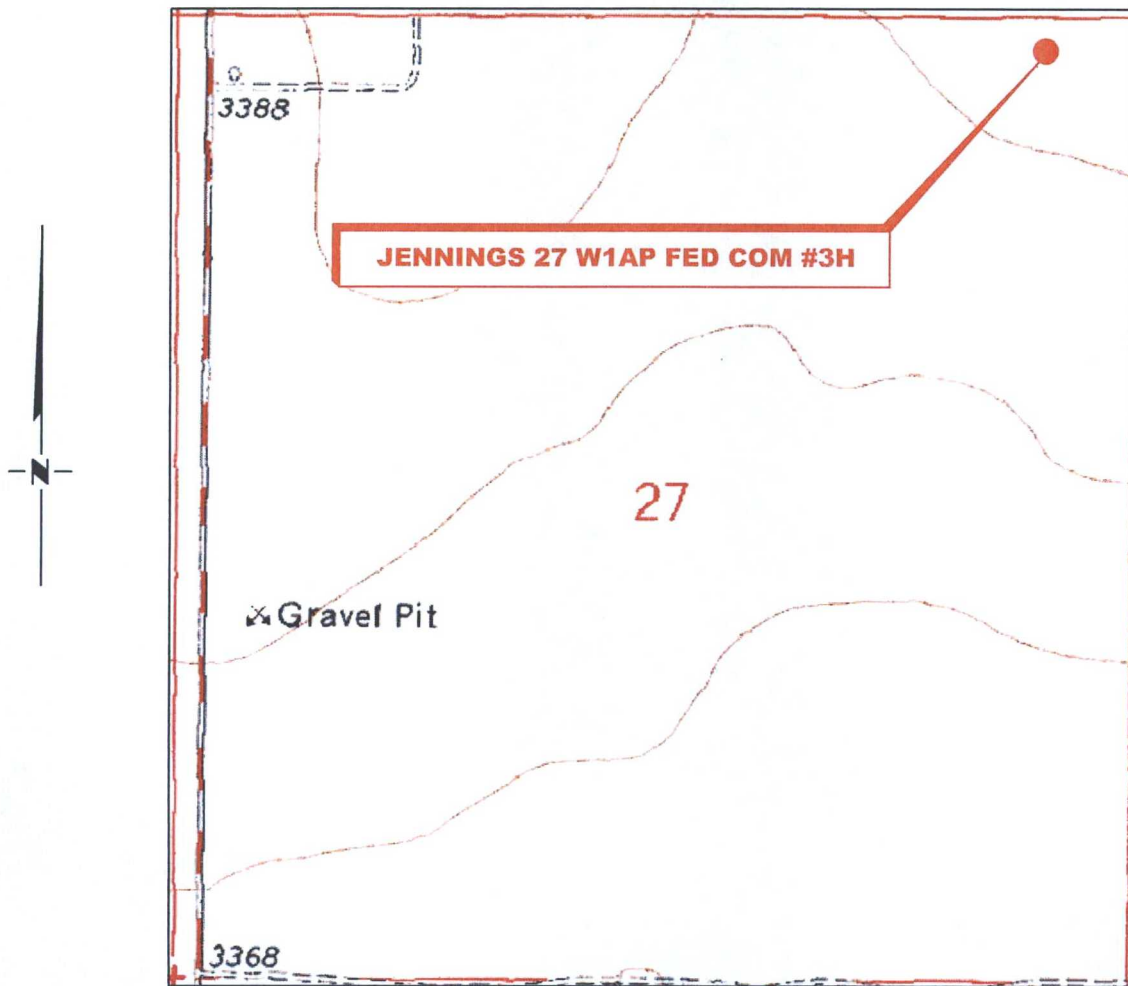
NO.	REVISION	DATE
JOB NO.:	LS1508443	
DWG. NO.:	1508843RD	

RRC

308 W. BROADWAY ST., HOBBS, NM 88240 (575) 964-8200

SCALE: 1" = 1000'
DATE: 8-20-2015
SURVEYED BY: ML/ER
DRAWN BY: CMJ
APPROVED BY: RMH
SHEET : 2 OF 2

LOCATION VERIFICATION MAP



*SECTION 27, TWP. 25 SOUTH, RGE. 32 EAST,
N. M. P. M., LEA CO., NEW MEXICO*

OPERATOR: Mewbourne Oil Company
LEASE: Jennings 27 W1AP Fed Com
WELL NO.: 3H
ELEVATION: 3401'

LOCATION: 185' FNL & 580' FEL
CONTOUR INTERVAL: 10'
USGS TOPO. SOURCE MAP:
Paduca Breaks West, NM (1973)

Firm No.: TX 10193838 NM 4655451

Copyright 2015 - All Rights Reserved

NO.	REVISION	DATE
JOB NO.: LS1508445		
DWG. NO.: 1508445LVM		

RRC

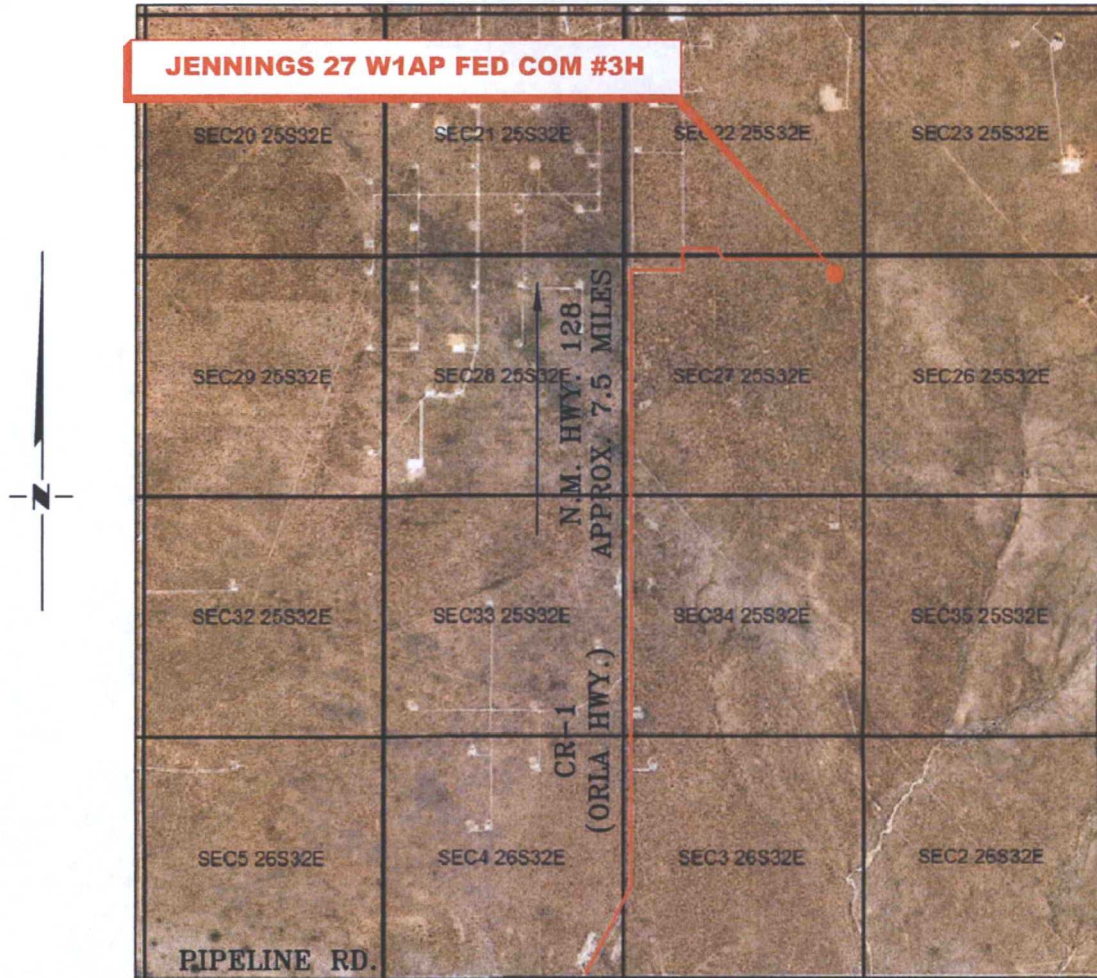
308 W. BROADWAY ST., HOBBS, NM 88240 (575) 964-8200

SCALE: 1000'
DATE: 8-20-2015
SURVEYED BY: ML/ER
DRAWN BY: CMJ
APPROVED BY: RMH
SHEET : 1 OF 1

3E"

VICINITY MAP

NOT TO SCALE



*SECTION 27, TWP. 25 SOUTH, RGE. 32 EAST,
N. M. P. M., LEA CO., NEW MEXICO*

OPERATOR: Mewbourne Oil Company
LEASE: Jennings 27 W1AP Fed Com
WELL NO.: 3H

LOCATION: 185' FNL & 580' FEL
ELEVATION: 3401'

Firm No.: TX 10193838 NM 4655451

Copyright 2014 - All Rights Reserved

NO.	REVISION	DATE
JOB NO.:	LS1508445	
DWG. NO.:	1508445VM	

RRC

308 W. BROADWAY ST., HOBBS, NM 88240 (575) 964-8200

SCALE: NTS
DATE: 8-20-2015
SURVEYED BY: ML/ER
DRAWN BY: CMJ
APPROVED BY: RMH
SHEET : 1 OF 1

Exhibit "4" - SL - Jennings 27 WIAF Fed Com #3H

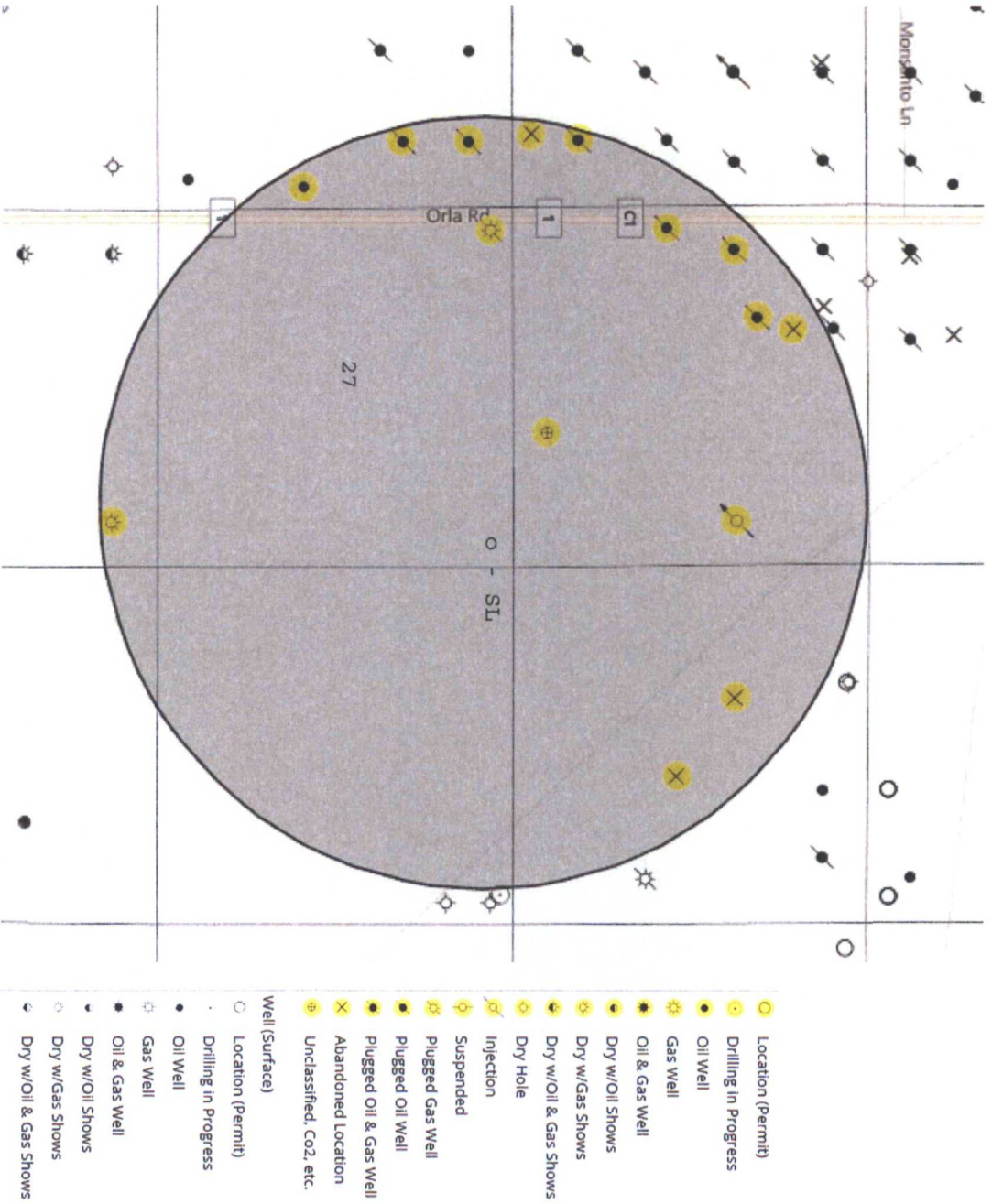
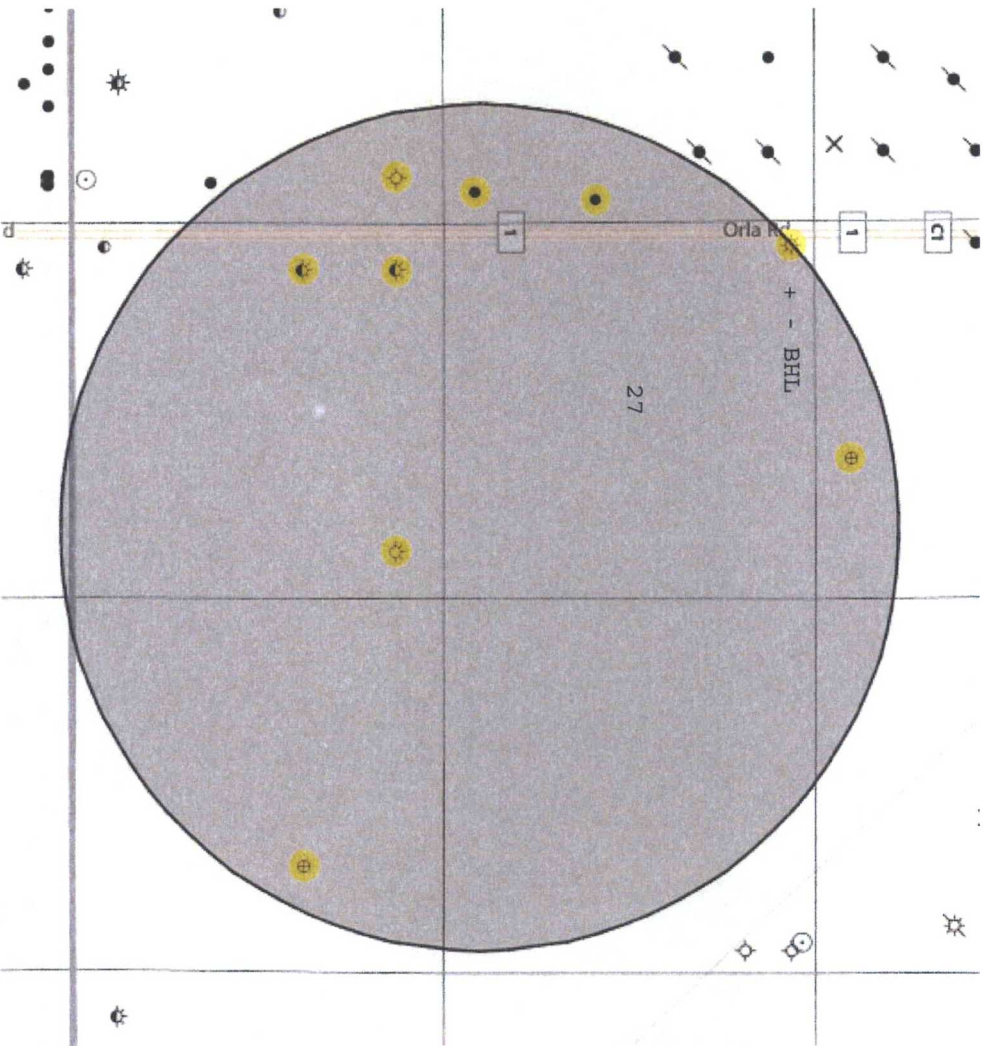


Exhibit "4A" - BHL - Jennings 27 W1AP Fed Com #3H



- Location (Permit)
 - Drilling in Progress
 - Oil Well
 - Gas Well
 - Oil & Gas Well
 - Dry w/Oil Shows
 - Dry w/Gas Shows
 - Dry w/Oil & Gas Shows
 - Dry Hole
 - Injection
 - Suspended
 - Plugged Gas Well
 - Plugged Oil Well
 - Plugged Oil & Gas Well
 - Abandoned Location
 - Unclassified, CO₂, etc.
- Well (Surface)
- Location (Permit)
 - Drilling in Progress
 - Oil Well
 - Gas Well
 - Oil & Gas Well
 - Dry w/Oil Shows
 - Dry w/Gas Shows
 - Dry w/Oil & Gas Shows

H2S Diagram

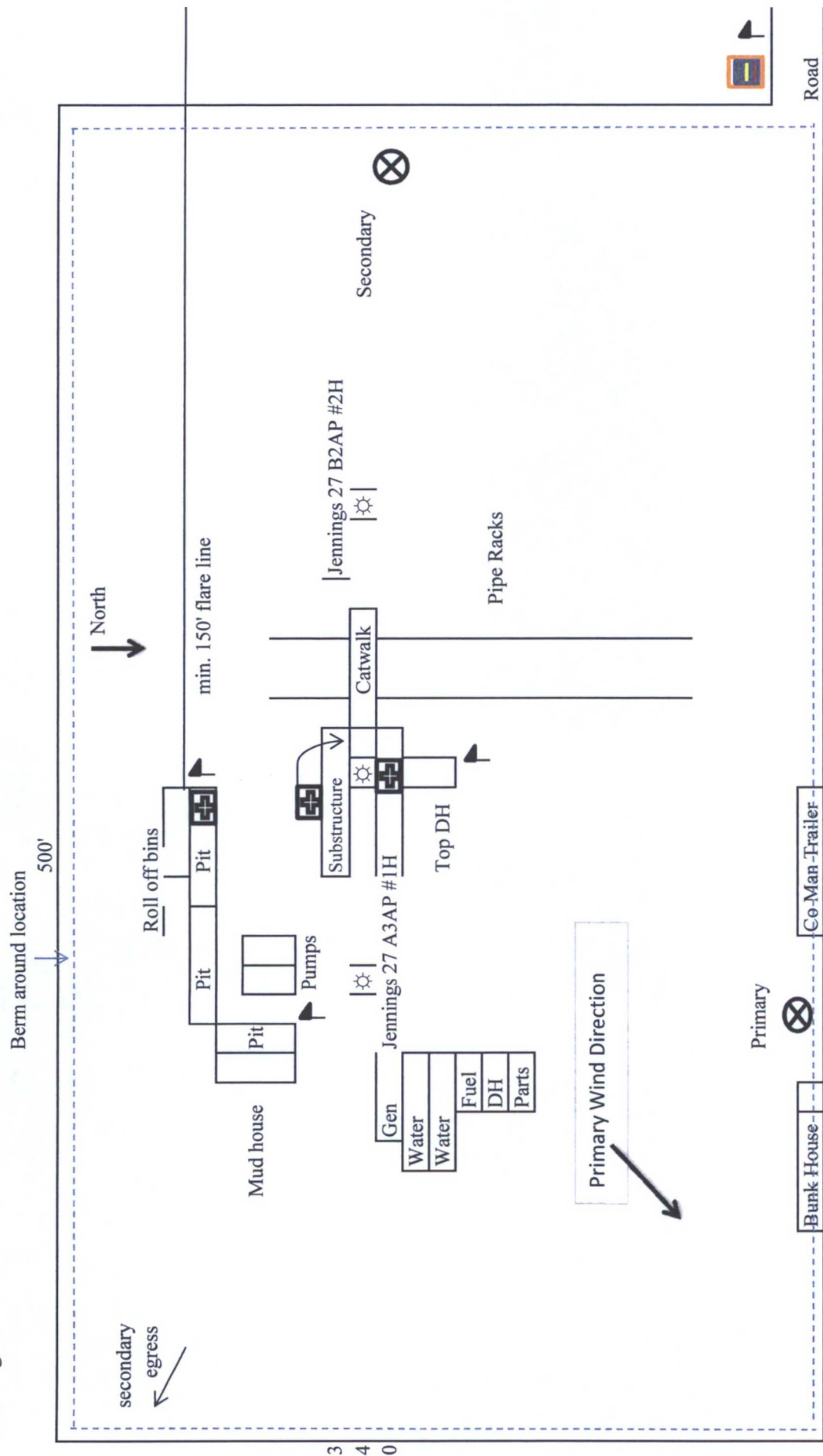
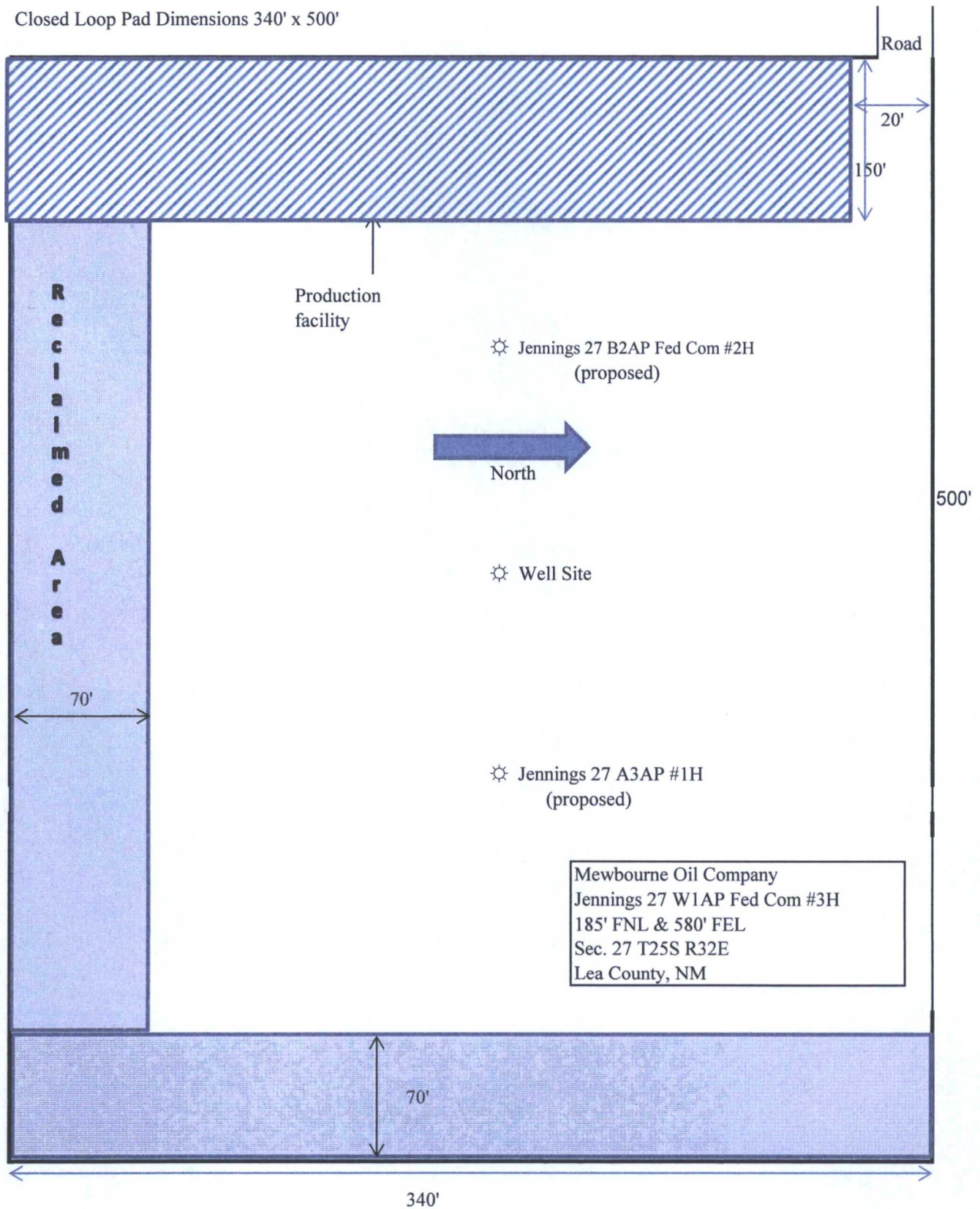


Exhibit 5

Mewbourne Oil Company
 Jennings 27 W1AP Fed Com #3H
 185' FNL & 580' FEL
 Sec. 27 T25S R32E
 Lea County, NM

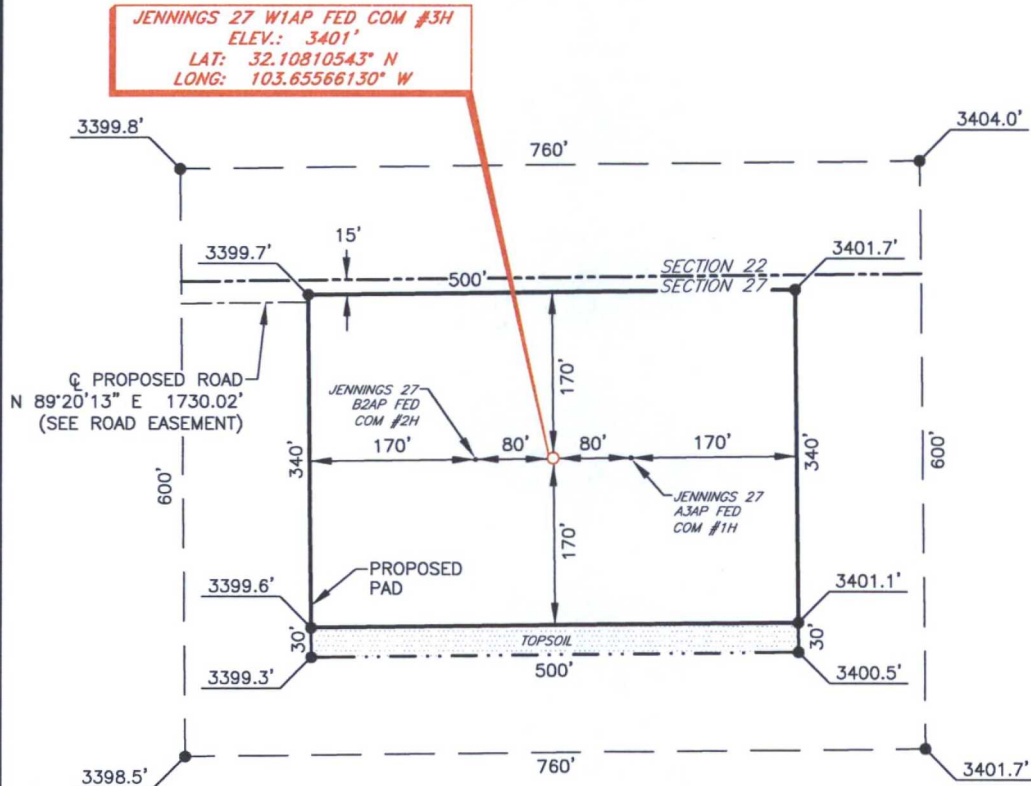
- = Safety Stations
- = Wind Markers
- = H2S Monitors
- = Warning Signs

Closed Loop Pad Dimensions 340' x 500'



MEWBOURNE OIL COMPANY

JENNINGS 27 W1AP FED COM #3H
(185' FNL & 580' FEL)
SECTION 27, T25S, R32E
N. M. P. M., LEA COUNTY, NEW MEXICO



DIRECTIONS TO LOCATION

From the intersection of CR-1 (Orla Hwy.) and Pipeline Rd.
Go North on CR-1 approx. 3.0 miles to a lease road on the right;
Turn right and go East approx. 0.2 miles to a lease road on the left;
Turn left and go North approx. 0.1 miles to a lease road on the right;
Turn right and go East approx. 0.3 mile to a proposed road on the right;
Turn right and go Southeast approx. 113 feet to a proposed road on the left;
Turn left and go East approx. 0.4 miles to location on the right.

SCALE: 1" = 150'
0 75 150

BEARINGS ARE
NAD 27 GRID - NM EAST
DISTANCES ARE GROUND

Firm No.: TX 10193838 NM 4655451

Copyright 2014 - All Rights Reserved

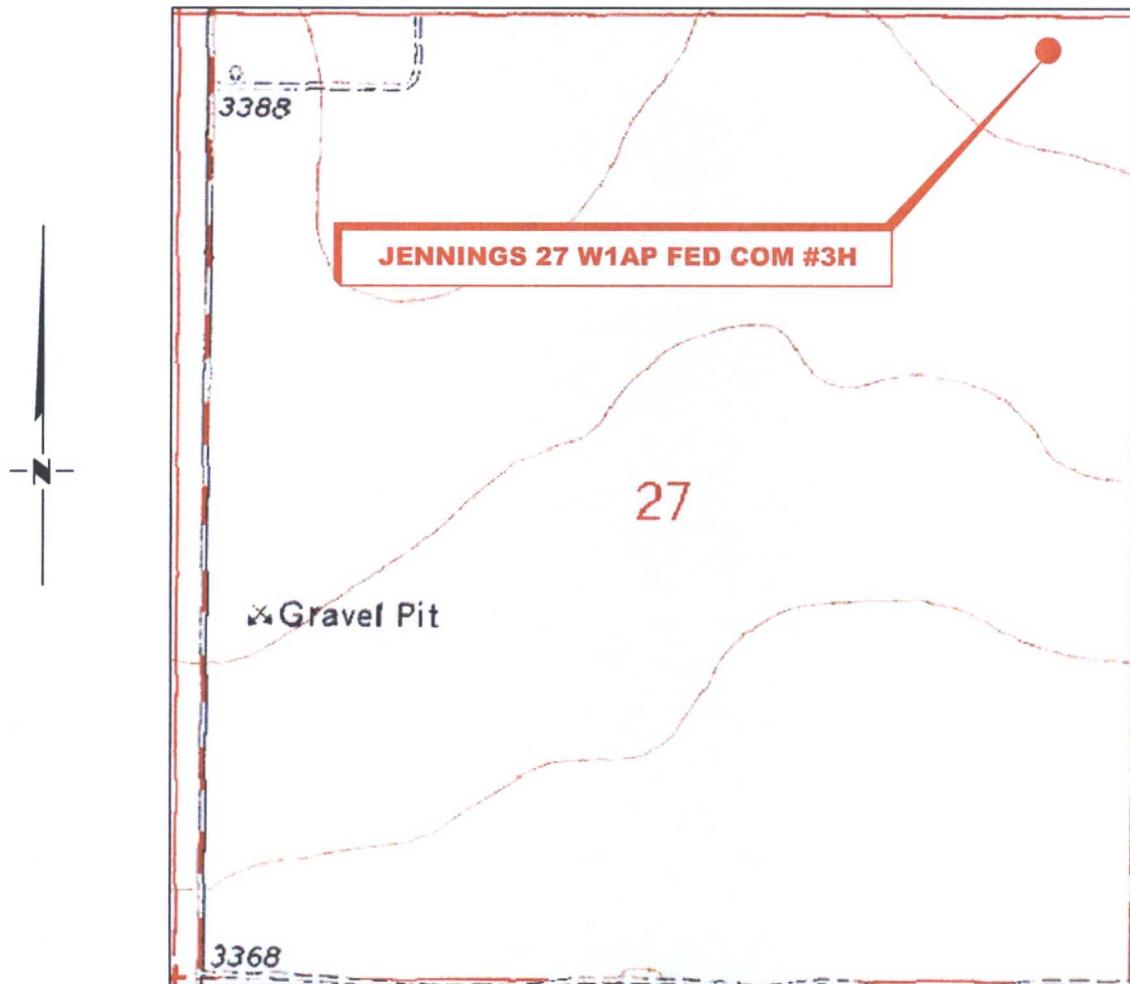
NO.	REVISION	DATE
JOB NO.:	LS1508445	
DWG. NO.:	1508445PAD	

RRC

308 W. BROADWAY ST., HOBBS, NM 88240 (575) 964-8200

SCALE: 1" = 150'
DATE: 8-20-2015
SURVEYED BY: ML/ER
DRAWN BY: CMJ
APPROVED BY: RMH
SHEET : 1 OF 1

LOCATION VERIFICATION MAP



*SECTION 27, TWP. 25 SOUTH, RGE. 32 EAST,
N. M. P. M., LEA CO., NEW MEXICO*

OPERATOR: Mewbourne Oil Company
LEASE: Jennings 27 W1AP Fed Com
WELL NO.: 3H
ELEVATION: 3401'

LOCATION: 185' FNL & 580' FEL
CONTOUR INTERVAL: 10'
USGS TOPO. SOURCE MAP:
Paduca Breaks West, NM (1973)

Firm No.: TX 10193838 NM 4655451

Copyright 2015 - All Rights Reserved

NO.	REVISION	DATE
JOB NO.:	LS1508445	
DWG. NO.:	1508445LVM	

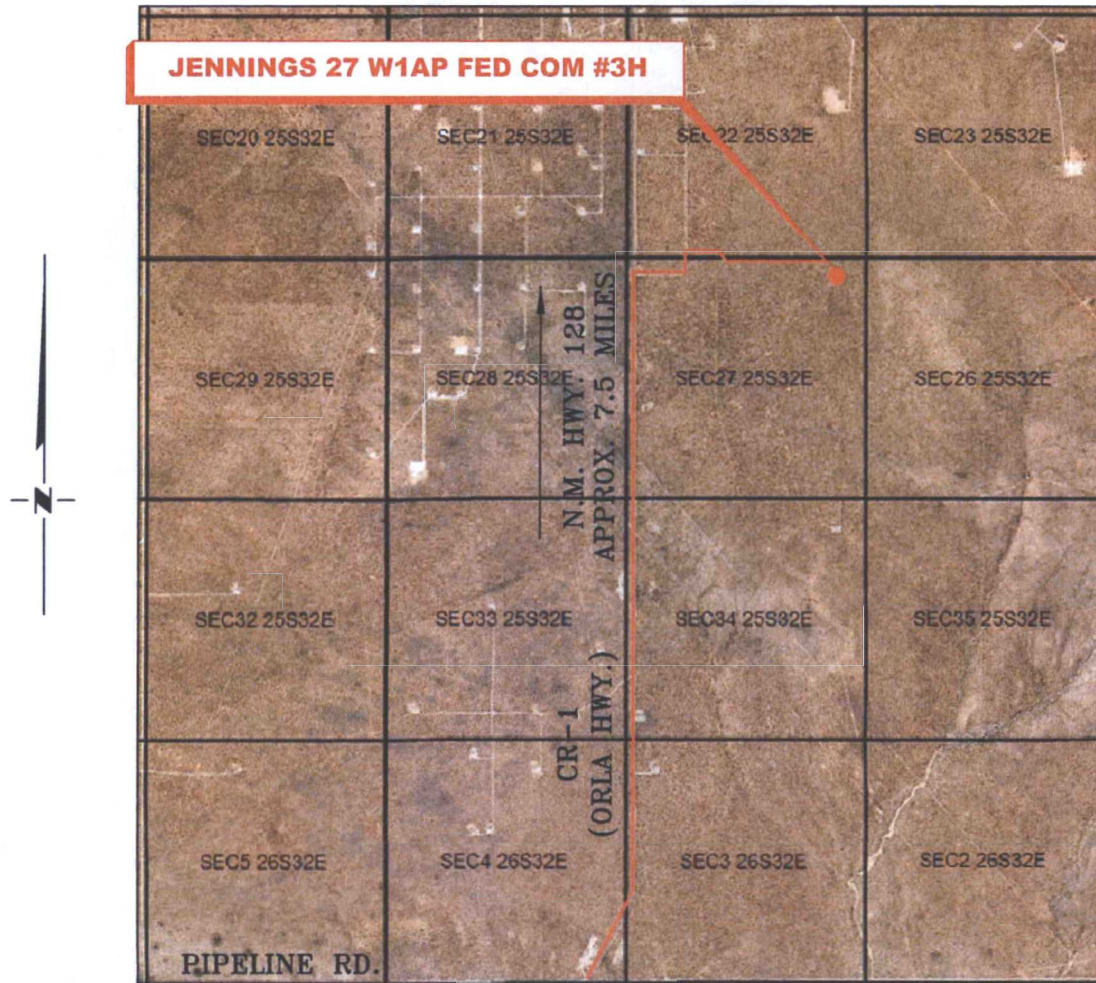
RRC

308 W. BROADWAY ST., HOBBS, NM 88240 (575) 964-8200

SCALE: 1000'
DATE: 8-20-2015
SURVEYED BY: ML/ER
DRAWN BY: CMJ
APPROVED BY: RMH
SHEET : 1 OF 1

VICINITY MAP

NOT TO SCALE



*SECTION 27, TWP. 25 SOUTH, RGE. 32 EAST,
N. M. P. M., LEA CO., NEW MEXICO*

OPERATOR: Mewbourne Oil Company
LEASE: Jennings 27 W1AP Fed Com
WELL NO.: 3H

LOCATION: 185' FNL & 580' FEL
ELEVATION: 3401'

Firm No.: TX 10193838 NM 4655451

Copyright 2014 - All Rights Reserved

NO.	REVISION	DATE
JOB NO.:	LS1508445	
DWG. NO.:	1508445VM	

RRC

308 W. BROADWAY ST., HOBBS, NM 88240 (575) 964-8200

SCALE: NTS
DATE: 8-20-2015
SURVEYED BY: ML/ER
DRAWN BY: CMJ
APPROVED BY: RMH
SHEET : 1 OF 1